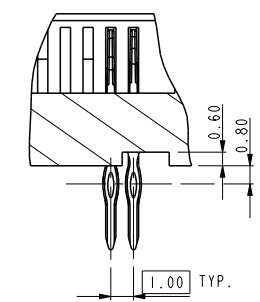
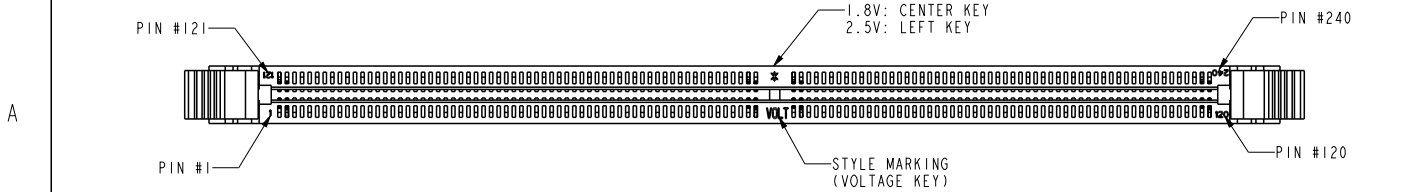


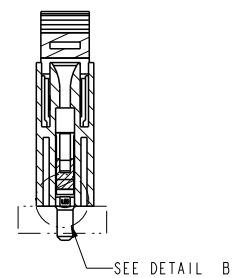
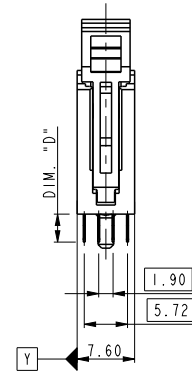
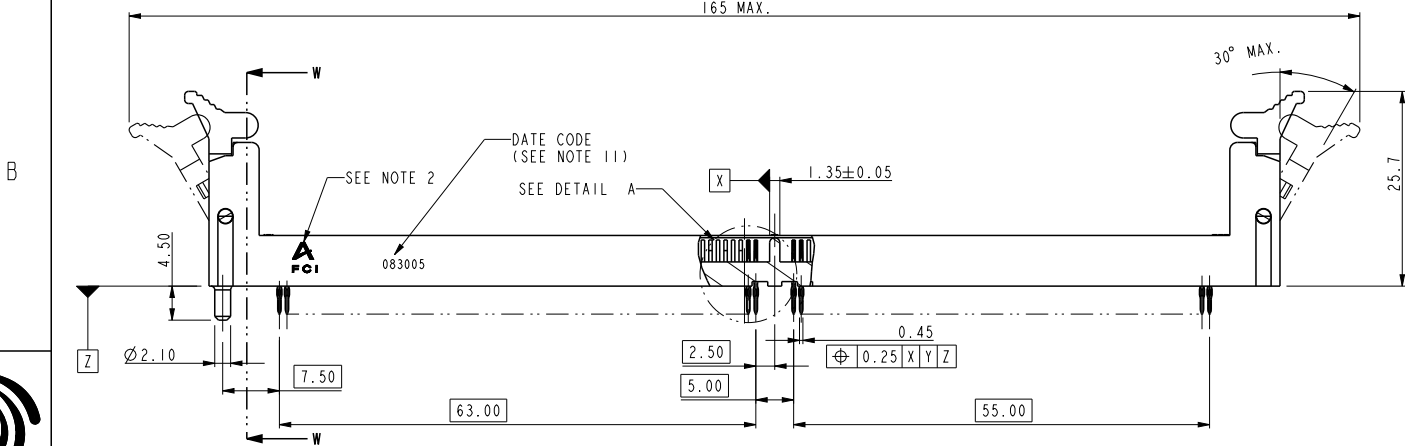
10034542-XXXXXX



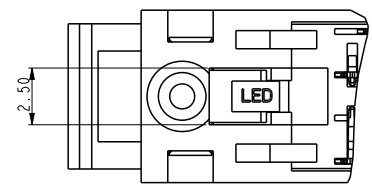
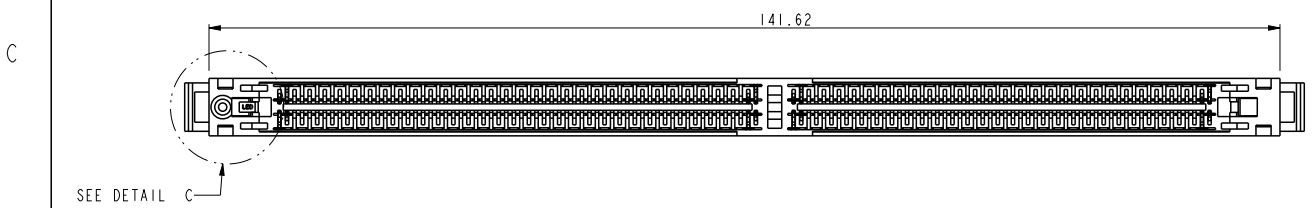
| rev | ecn no | dr | date |
|-----|------------|------|------------|
| N | DG07-0306 | CS | 2007-07-27 |
| P | DG07-0416 | CS | 2007-10-22 |
| R | DG-15684-1 | ERIC | 2013-11-08 |
| | | | |
| | | | |



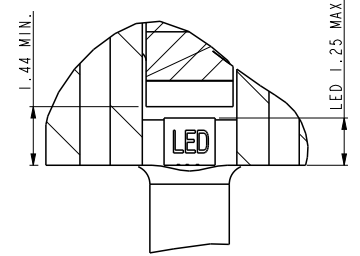
DETAIL A
SCALE 3.000



SECTION W-W
SCALE 1.000



DETAIL C
SCALE 3.000



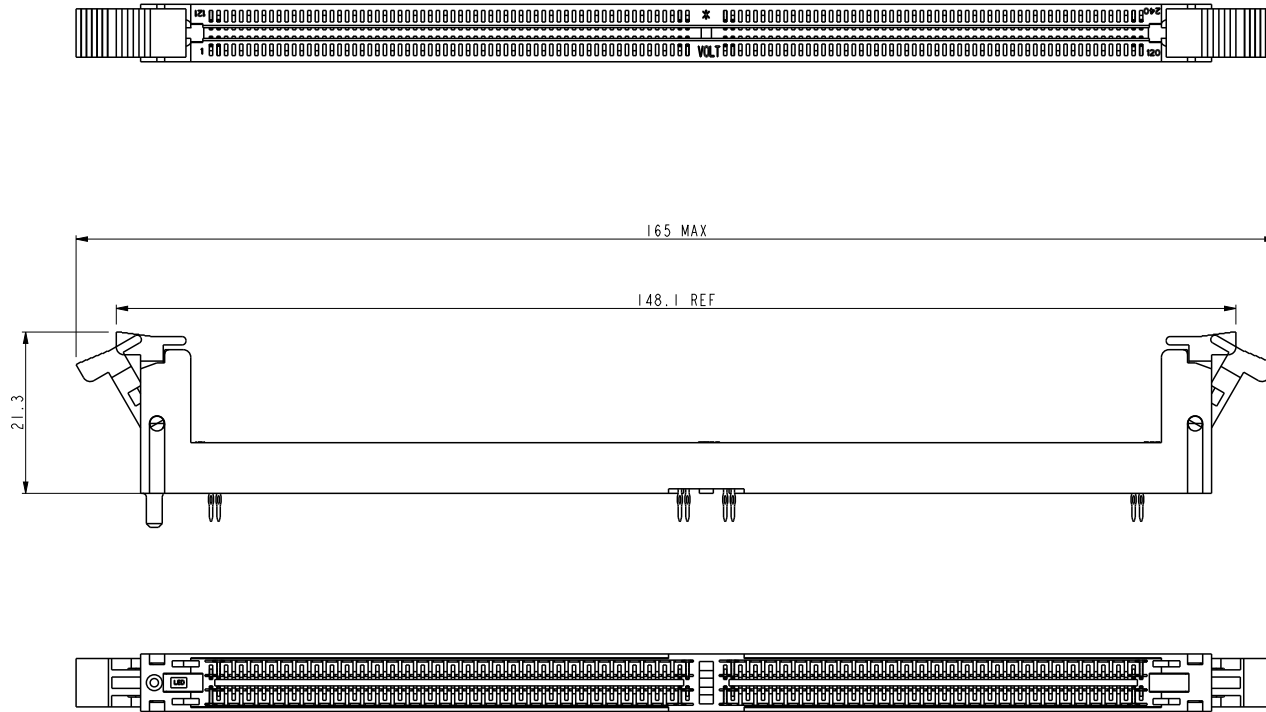
DETAIL B
SCALE 5.000

FCI
Copyright FCI.

| | | | | | | | | | | |
|---------------|---------------------------------------|-------|----------------|-------------|------------|-----------------------|------------------------|----------------|-----------|----------|
| spec ref | * | dr | Rick Bian | 2010/07/03 | projection | MM | size | A4 | scale | 0.500 |
| tolerance std | TOLERANCES UNLESS OTHERWISE SPECIFIED | eng | Eric Jiang | 2013/11/25 | | ←→ | ecn no | ELX-DG-15684-1 | rel level | Released |
| ASME Y14.5 | | chr | Tian-Xu Huang | 2013/11/25 | | | | | | |
| surface | | appr | Pei-Ming Zheng | 2013/11/25 | | | | | | |
| ASME Y14.5 | linear | 0.X | ±0.38 | | title | DDR 11 240P PRESS-FIT | dwg no | 10034542 | rev | R |
| | | 0.XX | ±0.25 | | | | | | | |
| | | 0.XXX | ±0.13 | | | | | | | |
| | angular | 0° | ±2° | www.fci.com | cat. no. | * | Product - Customer Drw | sheet 1 of 5 | | |

ProjE File - REV C - 2009-06-09

10034542-XXXXXCXX

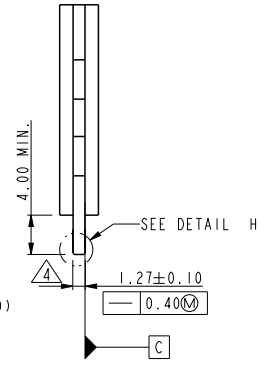
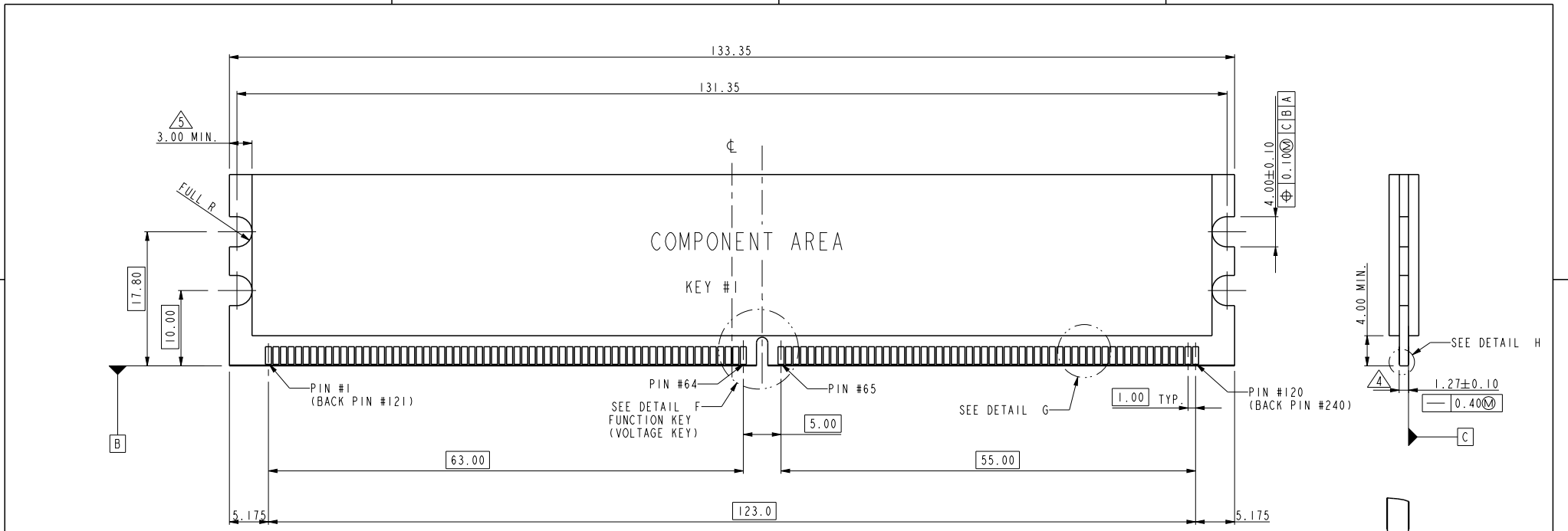


ALL DIMENSIONS ARE SAME TO PAGE 1 EXCEPT MARKED IN THE ABOVE

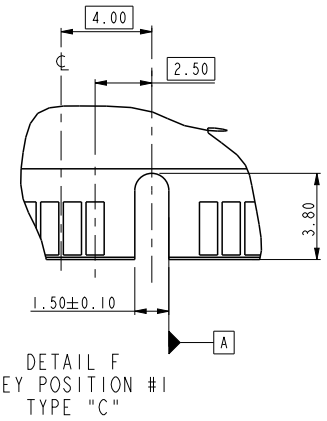
| | | | | | | | | | | | | |
|---------------|--|---------------------------------------|---------|-------|---------------|------------|-----------------------|--------|----------|----------------|-------|----------|
| spec ref | | * | | dr | Rick Bian | 2010/07/03 | projection | MM | size | A4 | scale | 0.500 |
| tolerance std | | TOLERANCES UNLESS OTHERWISE SPECIFIED | | eng | Eric Jiang | 2013/11/25 | | | ecn no | ELX-DG-15684-1 | | |
| ASME Y14.5 | | | | chr | Tian-Xu Huang | 2013/11/25 | | | | rel level | | Released |
| surface | | linear | 0.X | ±0.38 | FCI | title | DDR II 240P PRESS-FIT | dwg no | 10034542 | | rev | R |
| ASME Y14.5 | | | angular | 0° | | | | | | | | |



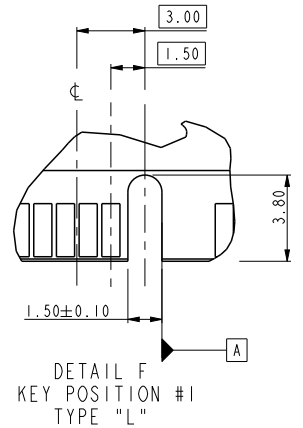
Copyright FCI.



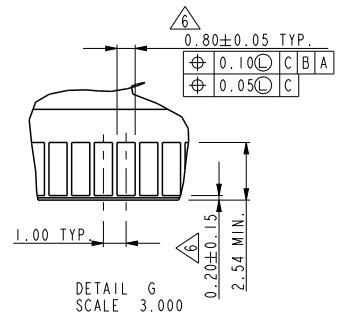
DETAIL H
SCALE 3.000



DETAIL F
KEY POSITION #1
TYPE "C"



DETAIL F
KEY POSITION #1
TYPE "L"



DETAIL G
SCALE 3.000

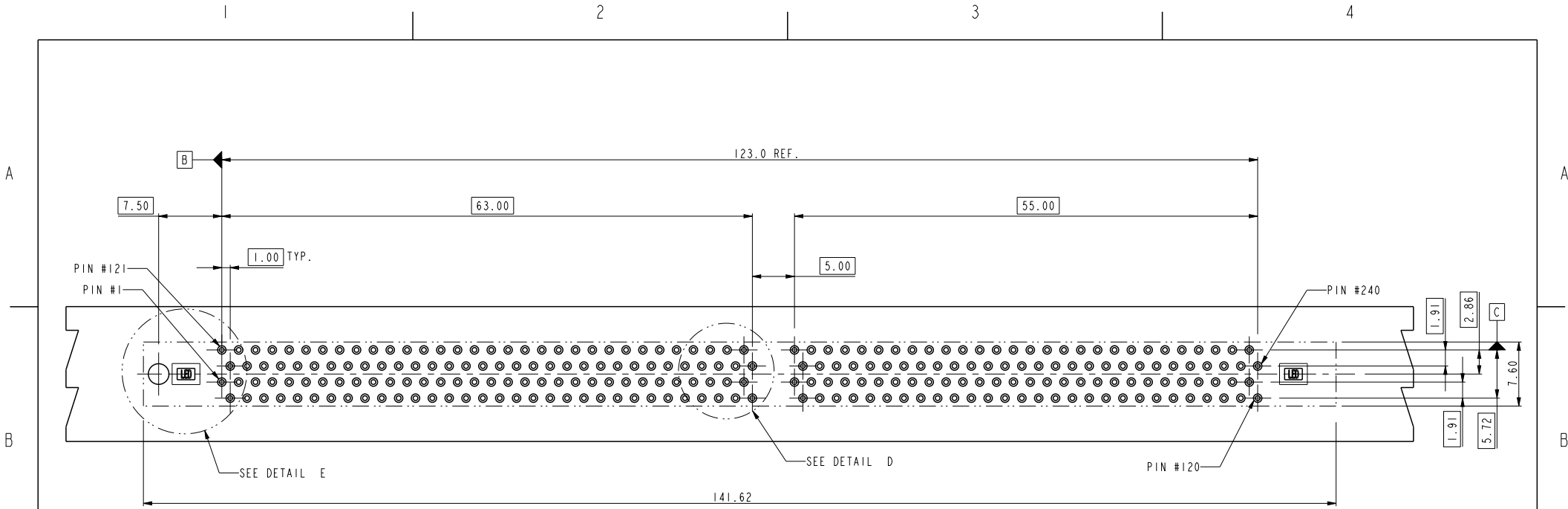
NOTE:
1. MATERIAL : FR-4.
2. FINISH: SOLDER MASK.
3. BURR: 0.08 MAX.

| | |
|----------------|-------------|
| TYPE "L" | 2.5 VOLTAGE |
| TYPE "C" | 1.8 VOLTAGE |
| SUB KEY POS #1 | DESCRIPTION |

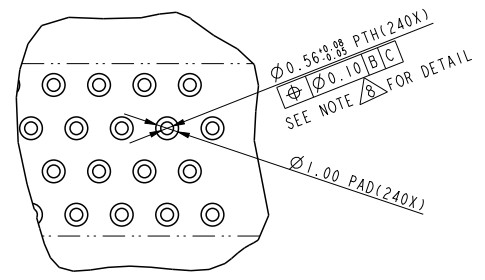
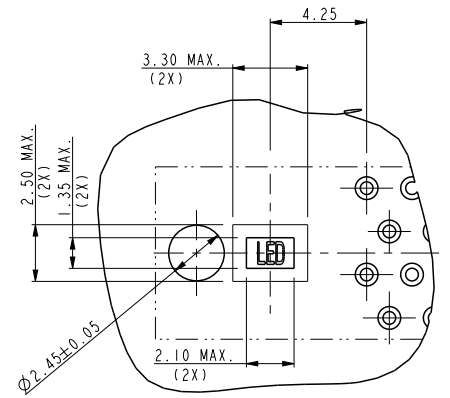
| | | | | | | | | | | | | | | | | | | | | | |
|---------------------------------------|--|-------------|---------------|------------|------------------------|--------------|-----------|----------------|-------|-------|---------|----|-----|------|----------------|------------|----------------|----------|--|-----|---|
| spec ref | * | dr | Rick Bian | 2010/07/03 | projection | MM | size | A4 | scale | 0.500 | | | | | | | | | | | |
| tolerance std | ASME Y14.5 | eng | Eric Jiang | 2013/11/25 | | | ecn no | ELX-DG-15684-1 | | | | | | | | | | | | | |
| TOLERANCES UNLESS OTHERWISE SPECIFIED | | chr | Tian-Xu Huang | 2013/11/25 | | | rel level | Released | | | | | | | | | | | | | |
| surface | <table border="1"> <tr> <td>linear</td> <td>0.X</td> <td>±0.38</td> </tr> <tr> <td></td> <td>0.XX</td> <td>±0.25</td> </tr> <tr> <td></td> <td>0.XXX</td> <td>±0.13</td> </tr> <tr> <td>angular</td> <td>0°</td> <td>±2°</td> </tr> </table> | linear | 0.X | ±0.38 | | 0.XX | ±0.25 | | 0.XXX | ±0.13 | angular | 0° | ±2° | appr | Pei-Ming Zheng | 2013/11/25 | product family | 10034542 | | rev | R |
| linear | 0.X | ±0.38 | | | | | | | | | | | | | | | | | | | |
| | 0.XX | ±0.25 | | | | | | | | | | | | | | | | | | | |
| | 0.XXX | ±0.13 | | | | | | | | | | | | | | | | | | | |
| angular | 0° | ±2° | | | | | | | | | | | | | | | | | | | |
| ASME Y14.5 | | www.fci.com | cat. no. | * | Product - Customer Drw | sheet 3 of 5 | | | | | | | | | | | | | | | |



Copyright FCI.



RECOMMEND CIRCUIT BOARD HOLE LAYOUT



| | | | | | | | | | | | | | |
|---------------|---------------------------------------|------|----------------|------------|------------|-----------------------|--------|-----------|----------------|----------|---|------------------------|--------------|
| spec ref | * | dr | Rick Bian | 2010/07/03 | projection | MM | size | A4 | scale | 0.500 | | | |
| tolerance std | TOLERANCES UNLESS OTHERWISE SPECIFIED | eng | Eric Jiang | 2013/11/25 | | | | ecn no | ELX-DG-15684-1 | | | | |
| ASME Y14.5 | | chr | Tian-Xu Huang | 2013/11/25 | | | | rel level | Released | | | | |
| surface | | appr | Pei-Ming Zheng | 2013/11/25 | | product family | | | | | | | |
| ASME Y14.5 | linear | 0.X | ±0.38 | | title | DDR II 240P PRESS-FIT | dwg no | 10034542 | rev | R | | | |
| | | 0.XX | ±0.25 | | | | | | | cat. no. | * | Product - Customer Drw | sheet 4 of 5 |
| | angular | 0° | ±2° | | | | | | | | | | |

PrdE File - REV C - 2009-06-09

10034542-□ □ □ □ □ □ □



STYLE: MECHAMICAL KEYING
 1 : 1.8 VOLT. W/CENTER KEY #1
 2 : 2.5 VOLT. W/LEFT KEY #1

REVISE
 0

TAIL LENGTH

FOR ROHS OPTION:
 BLANK: TIN LEAD
 LF: LEAD FREE

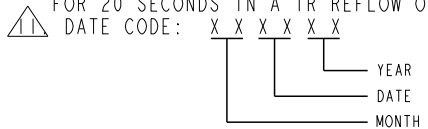
FOR LATCH TYPE OPTION:
 BLANK: TALL LATCH
 C: SHORT LATCH

| CODE | DIM. "D" |
|------|----------|
| 0 | 3.30 |
| 1 | 3.70 |
| 2 | 4.20 |

| CODE | CONTACT | TAIL AREA | UNDERPLATE | CODE | CONTACT | TAIL AREA | UNDERPLATE |
|------|---|---------------------------|--|------|---|--------------------------------|--|
| 2 | 15u"(0.38um) MIN. GOLD | 35u"~100u" Tin PLATING | 50u"(1.27um) MIN. NICKEL OVERALL | 2B | 15u"(0.38um) MIN. GOLD | 35u"~100u" Tin/Lead PLATING | 50u"(1.27um) MIN. NICKEL OVERALL |
| 3 | 30u"(0.76um) MIN. GOLD | | | 3B | 30u"(0.76um) MIN. GOLD | | |
| 4 | 3u"(0.076um) MIN. GOLD | | | 4B | 3u"(0.076um) MIN. GOLD | | |
| 6 | 15u"(0.38um) MIN. GOLD (LUBRICATED) | 35u"~100u" Tin PLATING | 50u"(1.27um) MIN. NICKEL OVERALL | 6B | 15u"(0.38um) MIN. GOLD (LUBRICATED) | 35u"~100u" Tin/Lead PLATING | 50u"(1.27um) MIN. NICKEL OVERALL |
| 7 | 30u"(0.76um) MIN. GOLD (LUBRICATED) | | | 7B | 30u"(0.76um) MIN. GOLD (LUBRICATED) | | |
| 8 | 3u"(0.076um) MIN. GOLD (LUBRICATED) | | | 8B | 3u"(0.076um) MIN. GOLD (LUBRICATED) | | |

- NOTE:
- MATERIAL:
 HOUSING: HIGH PERFORMANCE RESINS, GLASS FILLED UL94V-0 RATED, COLOR: BLACK.
 EJECTOR: HIGH PERFORMANCE RESINS, GLASS FILLED UL94V-0 RATED, COLOR: NATURAL.
 TERMINAL: COPPER ALLOY.
 - FCI LOGO TO BE APPROXIMATELY LOCATED AS SHOWN ON PRINT.
 - PRODUCT SPECIFICATION: GS-12-273
 - CARD THICKNESS APPLIES ACROSS TABS AND INCLUDES PLATING AND / OR METALIZATION.
 - 3.00mm MINIMUM APPLIES TO BOTH 4.00mm WIDE NOTCH LENGTH AND COMPONENT KEEPOUT AREA.
 - LEADING EDGE OF CONTACT PADS SPECIFIED BY THE KEEP OUT ZONE SHALL BE FREE OF BURRS AND EXTERNAL TIE BARS.
 FOR OPTIMUM PERFORMANCE, THE TIE BAR IS TO BE ON AN INTERNAL LAYER SO THAT THE REMNANT CANNOT CAUSE CONTACT DAMAGE.
 - PACKAGING SPECIFICATION: GS-14-528.
 - ALL PTH SHOULD BE 0.66mm DIA DRILLED AND 0.025mm MIN. ELECTRO-DEPOSITED COPPER THK ON THROUGH HOLE WALL.
 - THIS PRODUCT MEETS EUROPEAN UNION DIRECTIVES AND OTHER COUNTRY REGULATIONS AS DESCRIBED IN GS-22-008.
 - THE HOUSING WILL WITHSTAND EXPOSURE TO 260° PEAK TEMPERATURE FOR 20 SECONDS IN A IR REFLOW OVEN.

- COLOR OF HOUSING AN EJECTOR
- 0 : BLACK HOUSING + IVORY EJECTOR
 - 1 : BLACK HOUSING + AMBER EJECTOR
 - 2 : BLACK HOUSING + BLACK EJECTOR
 - 3 : BLUE HOUSING + IVORY EJECTOR
 - 4 : BLUE HOUSING + AMBER EJECTOR



12. A SYMBOL WILL BE NEXT TO ANY DIMENSION, VIEW, OR NOTE WHICH HAS BEEN MODIFIED WITH THE CURRENT DRAWING REVISION

| | | | | | | | | | |
|-------------|----------------|------------|----------------|------------------------|-----------------------|----------------|--------------|-------|----------|
| dr | Rick Bian | 2010/07/03 | projection | MM | size | A4 | scale | 0.500 | |
| eng | Eric Jiang | 2013/11/25 | | | ecn no | ELX-DG-15684-1 | | | |
| chr | Tian-Xu Huang | 2013/11/25 | | | rel level | Released | | | |
| appr | Pei-Ming Zheng | 2013/11/25 | product family | | | | rev | R | |
| | | title | | | DDR II 240P PRESS-FIT | | dwg no | | 10034542 |
| www.fci.com | | cat. no. | | Product - Customer Drw | | | sheet 5 of 5 | | |



Copyright FCI.



Компания «ЭлектроПласт» предлагает заключение долгосрочных отношений при поставках импортных электронных компонентов на взаимовыгодных условиях!

Наши преимущества:

- Оперативные поставки широкого спектра электронных компонентов отечественного и импортного производства напрямую от производителей и с крупнейших мировых складов;
- Поставка более 17-ти миллионов наименований электронных компонентов;
- Поставка сложных, дефицитных, либо снятых с производства позиций;
- Оперативные сроки поставки под заказ (от 5 рабочих дней);
- Экспресс доставка в любую точку России;
- Техническая поддержка проекта, помощь в подборе аналогов, поставка прототипов;
- Система менеджмента качества сертифицирована по Международному стандарту ISO 9001;
- Лицензия ФСБ на осуществление работ с использованием сведений, составляющих государственную тайну;
- Поставка специализированных компонентов (Xilinx, Altera, Analog Devices, Intersil, Interpoint, Microsemi, Aeroflex, Peregrine, Syfer, Eurofarad, Texas Instrument, Miteq, Cobham, E2V, MA-COM, Hittite, Mini-Circuits, General Dynamics и др.);

Помимо этого, одним из направлений компании «ЭлектроПласт» является направление «Источники питания». Мы предлагаем Вам помощь Конструкторского отдела:

- Подбор оптимального решения, техническое обоснование при выборе компонента;
- Подбор аналогов;
- Консультации по применению компонента;
- Поставка образцов и прототипов;
- Техническая поддержка проекта;
- Защита от снятия компонента с производства.



Как с нами связаться

Телефон: 8 (812) 309 58 32 (многоканальный)

Факс: 8 (812) 320-02-42

Электронная почта: org@eplast1.ru

Адрес: 198099, г. Санкт-Петербург, ул. Калинина, дом 2, корпус 4, литера А.