

## MYC-JX8MX CPU Module

- NXP i.MX 8M Quad Application Processor based on 1.3 GHz Arm Cortex-A53 and 266MHz Cortex-M4 Cores
- 1GB / 2GB LPDDR4, 8GB eMMC Flash, 256Mbit QSPI Flash
- On-board Gigabit Ethernet PHY
- ROHM Power Management IC (PMIC)
- 0.5mm pitch 314-pin MXM 3.0 Expansion Connector
- Supports Working Temperature Ranging from -25°C to 80°C
- Supports Running Yocto Linux, Ubuntu Linux, Android

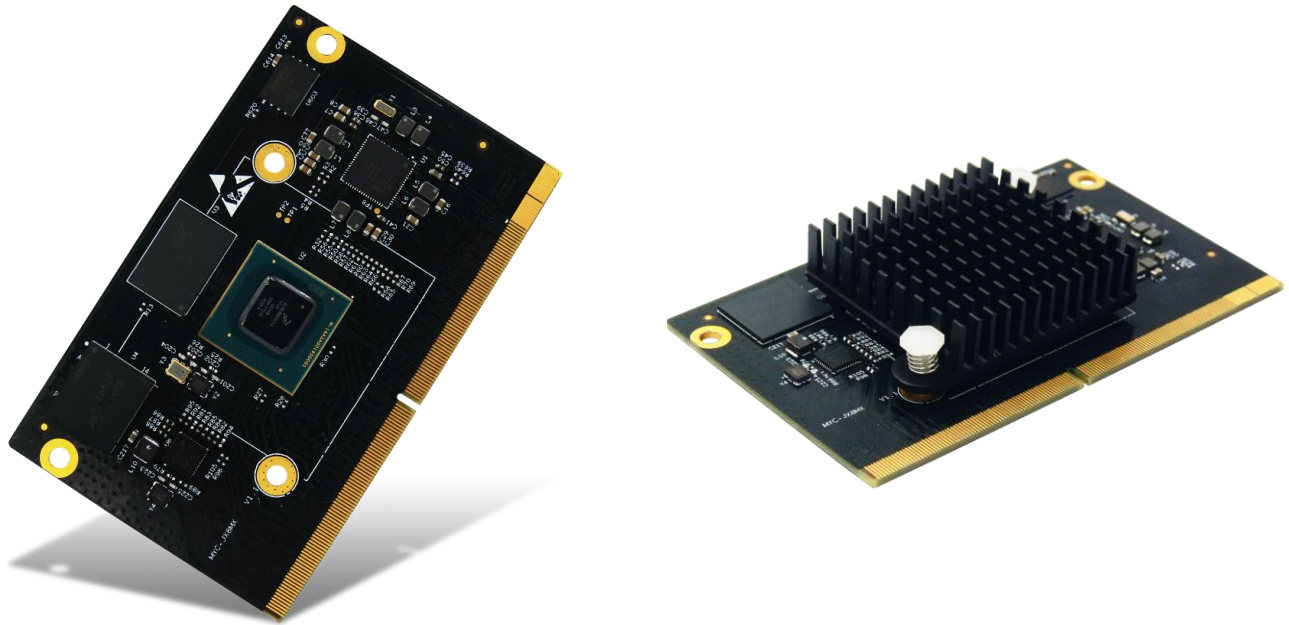


Figure 1-1 MYC-JX8MX CPU Module (delivered with installed heatsink by default)

Measuring 82mm by 52mm, the [MYC-JX8MX CPU Module](#) provides an outstanding embedded solution for Scanning/Imaging, Building Automation and Smart Home, Human Machine Interface (HMI), Machine Vision and more other consumer and industrial applications which requires high multi-media performance.

The [MYC-JX8MX](#) is based on NXP i.MX8M Quad processor featuring 1.3GHz quad ARM Cortex-A53 cores and a real-time ARM Cortex-M4 co-processor. It is a minimum system integrated with CPU, LPDDR4, eMMC, QSPI Flash, GigE PHY and PMIC. All controller signals are brought out through one 0.5mm pitch 314-pin MXM 3.0 Expansion Connector. It is a Linux-ready ARM SoM ideal for your next embedded design and provided with Linux and Android software packages for development.

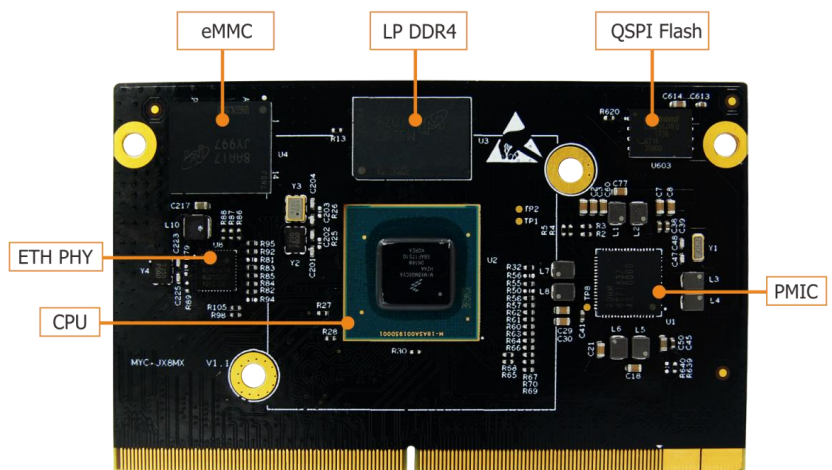


Figure 1-2 MYC-JX8MX CPU Module

A development board [MYD-JX8MX](#) is also available for evaluating the [MYC-JX8MX CPU Module](#). It takes full features of the i.MX8M processor to provide rich peripheral interfaces and signals through connectors and headers. It is a solid reference design for users to develop their own carrier boards when using the MYC-JX8MX as their controller boards; it is also a complete evaluation platform for i.MX8M based solutions. MYIR offers [MY-CAM003M MIPI Camera Module](#) and [MY-LVDS070C 7-inch LCD Module](#) as options for the board.

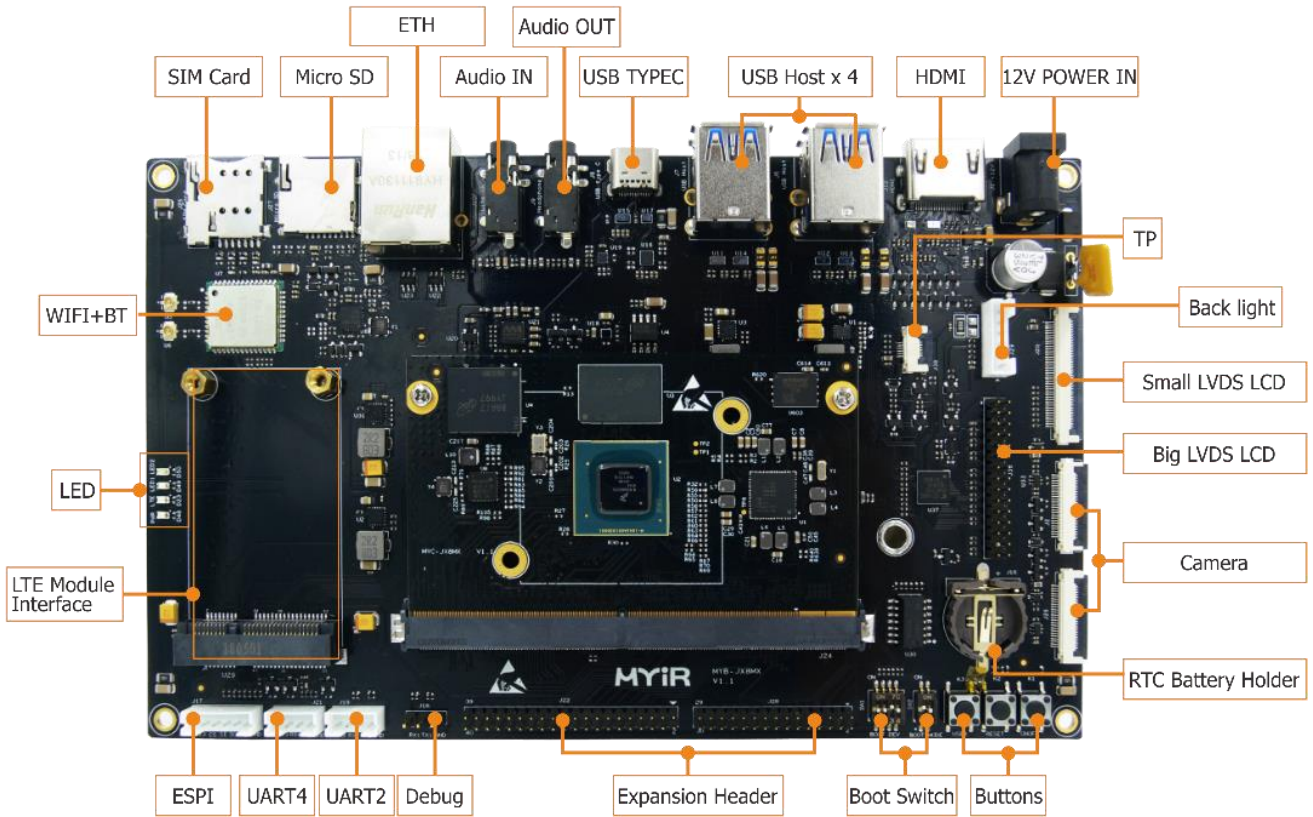


Figure 1-3 MYD-JX8MX Development Board Top-view

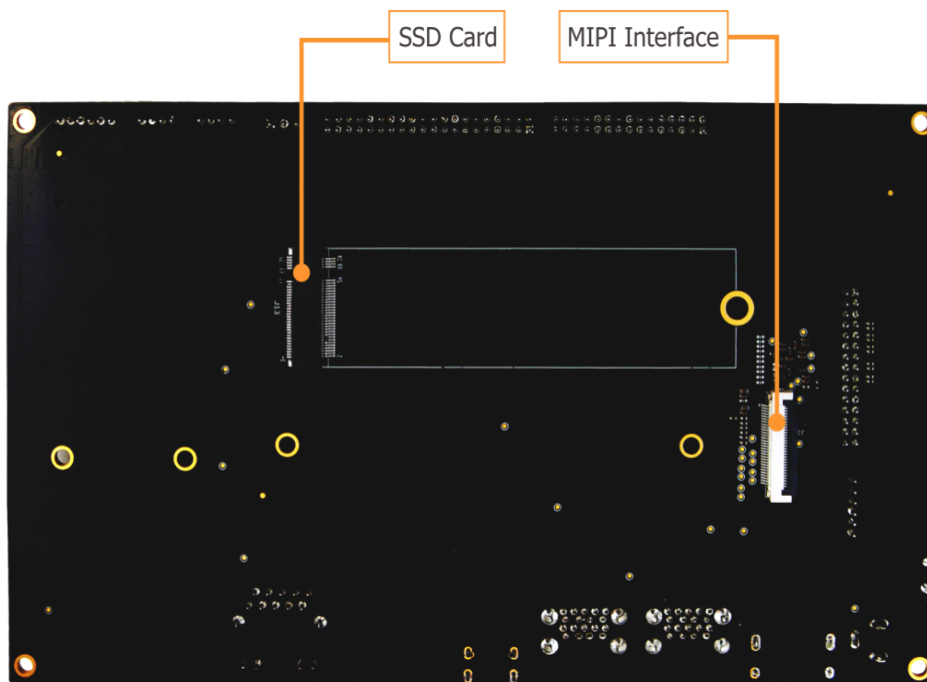


Figure 1-4 MYD-JX8MX Development Board Bottom-view

**Hardware Specification**

The MYC-JX8MX CPU Module is using NXP’s 17 x 17 mm, 0.65 mm pitch, FCBGA bare die package i.MX 8M Quad Application Processor (MIMX8MQ6CVAHZAB) which is based on 1.3GHz quad Arm Cortex-A53 and 266MHz Cortex-M4 cores.

The [i.MX 8M family](#) of applications processors (i.MX 8M Dual / 8M QuadLite / 8M Quad) represent NXP’s latest market of connected streaming audio/video devices, scanning/imaging devices, and various devices requiring high-performance, low-power processors. The i.MX 8M processors feature advanced implementation of a dual/quadruple Arm® Cortex®-A53 core, which operates at speeds of up to 1.3 GHz. A general-purpose Cortex®-M4 core processor is for low-power processing. The DRAM controller supports 32-bit/16-bit LPDDR4, DDR4, and DDR3L memory. There are a number of other interfaces for connecting peripherals, such as WLAN, Bluetooth, GPS, displays, and camera sensors. The i.MX 8M Quad and i.MX 8M Dual processors have hardware acceleration for video playback up to 4K, and can drive the video outputs up to 60 fps. Although the i.MX 8M QuadLite processor does not have hardware acceleration for video decode, it allows for video playback with software decoders if needed.

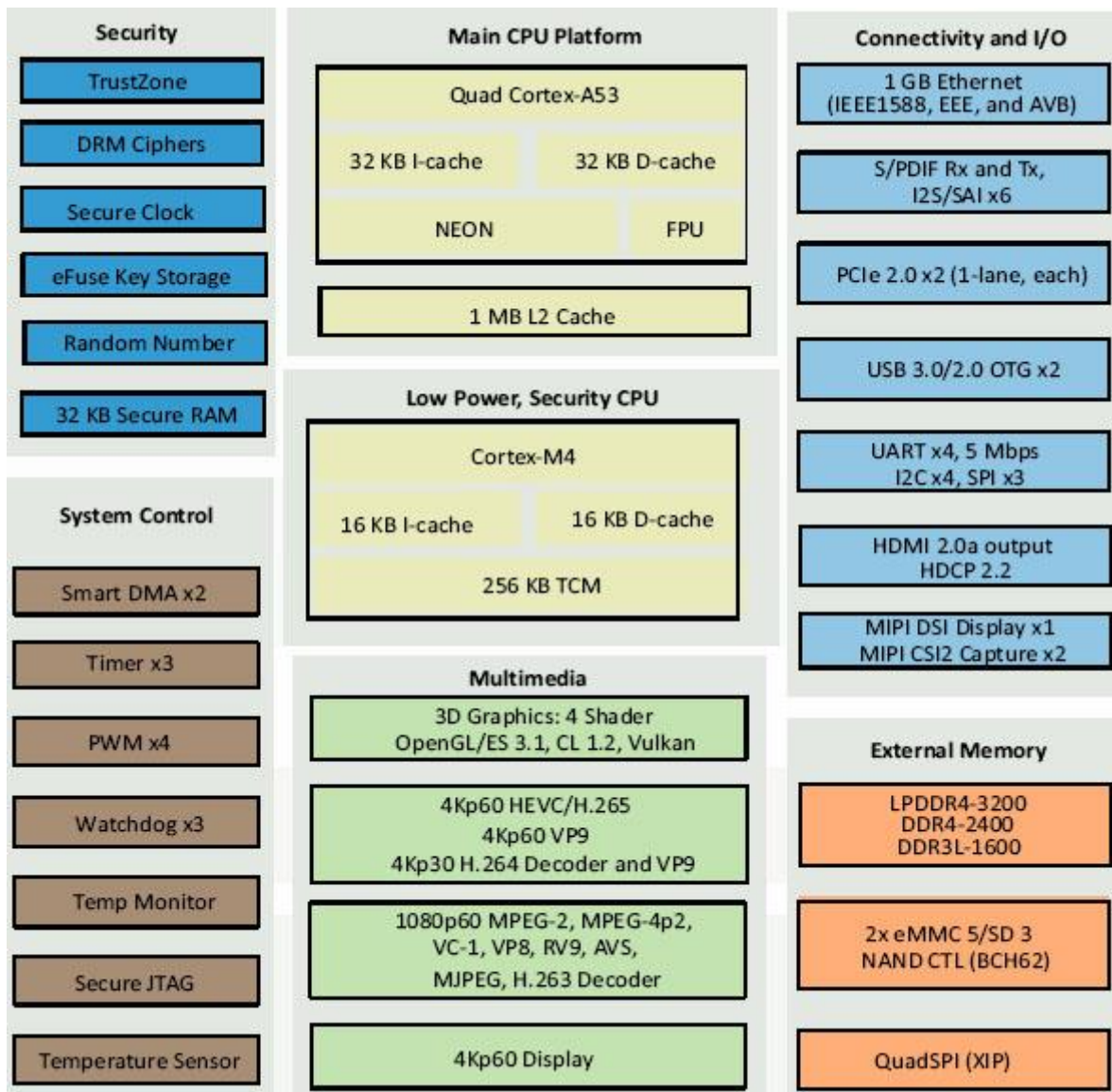


Figure 1-5 i.MX 8M System Block Diagram

## Mechanical Parameters

- Dimensions: 82mm x 50mm
- PCB Layers: 10-layer design
- Power supply: +5V/0.5A
- Working temperature: -25~80 Celsius

## Processor

- NXP i.MX 8M Quad Processor based on 1.3GHz Quad ARM Cortex-A53 and 266MHz Cortex-M4 cores (MIMX8MQ6CVAHZAB by default)

## Memory

- 1GB / 2 GB LPDDR4 (supports up to 4GB LPDDR4)
- 8GB eMMC Flash (supports up to 64GB eMMC)
- 256Mbit QSPI Flash

## Peripherals and Signals Routed to Pins

### [MYC-JX8MX Pinouts Description](#)

- One 10/100/1000M Ethernet PHY
- Power Management IC (ROHM BD71837MWV)
- 0.5mm pitch 314-pin MXM 3.0 Expansion Connector
  - 1 x 10/100/1000Mbps Ethernet
  - 3 x Serial ports
  - 3 x I2C
  - 2 x SPI
  - 4 x PWM
  - 3 x USB 3.0
  - 2 x PCIe
  - 6 x I2S / SAI
  - 2 x MIPI Camera Sensor Interface
  - 1 x JTAG
  - 1 x HDMI 2.0a output
  - Up to 108 GPIOs

*Note: the peripheral signals brought out to the expansion interface are listed in maximum number. Some signals are reused. Please refer to the processor datasheet.*

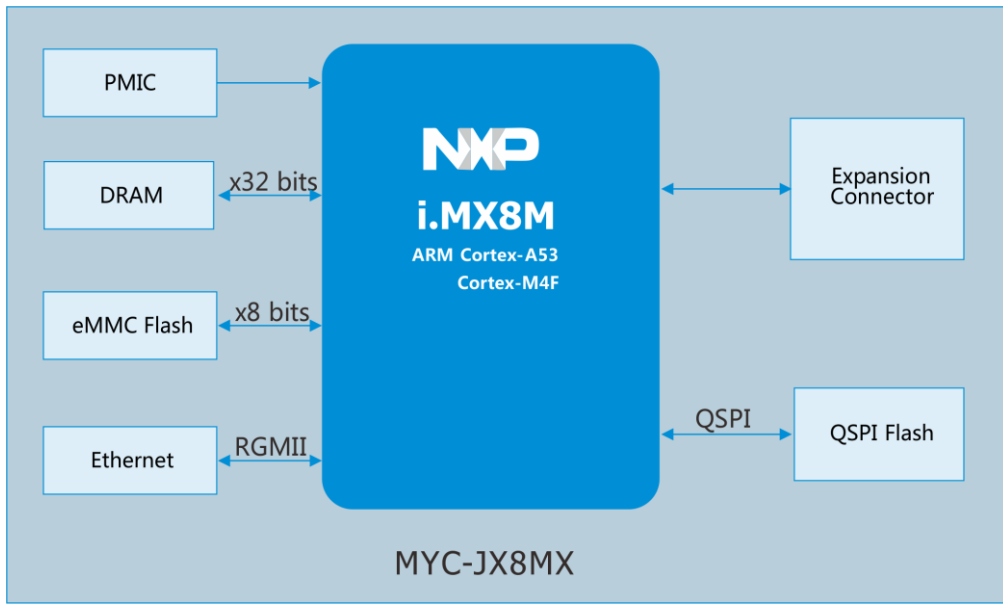


Figure 1-6 MYC-JX8MX CPU Module Function Block Diagram

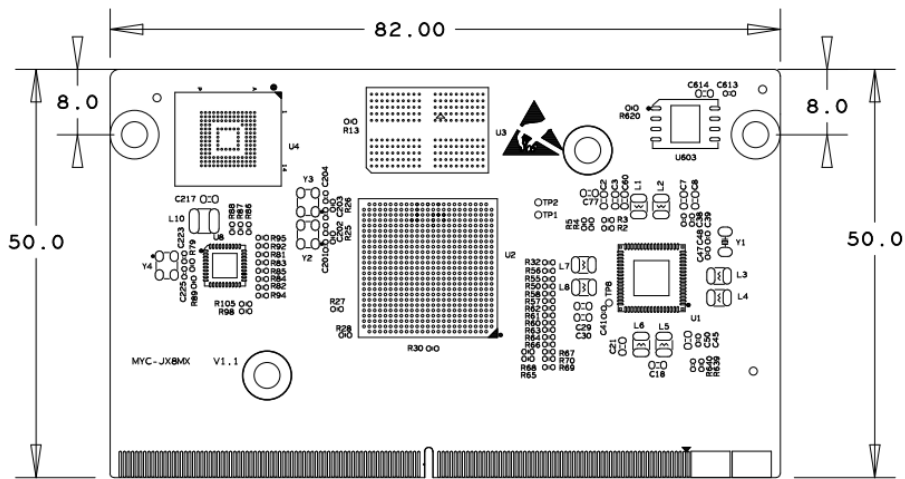


Figure 1-7 MYC-JX8MX Dimensions Chart

## Software Features

MYIR's [MYC-JX8MX CPU module](#) supports running Yocto Linux, Ubuntu Linux, Android OS and is provided with both software packages for user development. Many peripheral drivers are in source code to help accelerate customers' designs. The software packages provided are characterized as following:

Item	Features	Description	Source Code Provided
Bootstrap program	U-boot	The primary bootstrap	YES
Linux kernel	Image	Based on NXP official 2019.04-4.19.35-1.1.0 version	YES
Drivers	PMIC	BD71873PMIC driver	YES
	USB Host	USB Host driver	YES
	USB OTG	USB OTG driver	YES
	I2C	I2C Bus driver	YES
	SPI	SPI Bus driver	YES
	Ethernet	10/100/1000M Ethernet driver	YES
	MMC	MMC/eMMC/TF card driver	YES
	HDMI	HDMI Display driver	YES
	LCD	MIPI-LVDS driver	YES
	PWM	PWM driver	YES
	RTC	RTC driver	YES
	IO	GPIO driver	YES
	Touch	Capacitive touch screen driver	YES
	Audio	WM8904 driver	YES
	Camera	Ov5640 driver	YES
	WiFi & BT	6222B/QCA6174 driver	YES
	Watchdog	Watchdog driver	YES
	4G LTE Module	Supports Quectel's EC20 using USB driver	YES
M.2	NVME driver	YES	
File System	Yocto rootfs	Including QT5.12	YES
		Common file system for terminal	YES
Application Programs	GPIO KEY	Key example	YES
	GPIO LED	LED example	YES
	NET	TCP/IP Socket C/S example	YES
	RTC	RTC example	YES
	UART	UART example	YES
	Audio	Audio example	YES
	LCD	LCD example	YES
	Camera	Dual camera display example	YES
Compiler Tool Chain	Cross compiler	Yocto GCC 8.3.0 Hardfloat	BINARY

Table 1-1 Yocto Linux Software Features

Item	Features	Description	Source Code Provided
Bootstrap program	U-boot	The primary bootstrap	YES
Linux kernel	Image	Based on NXP official Android 9.0.0 version	YES
Drivers	PMIC	BD71873PMIC driver	YES
	USB Host	USB Host driver	YES
	USB OTG	USB OTG driver	YES
	I2C	I2C Bus driver	YES
	SPI	SPI Bus driver	YES
	Ethernet	10/100/1000M Ethernet driver	YES
	MMC	MMC/eMMC/TF card driver	YES
	HDMI	HDMI Display driver	YES
	LCD	MIPI-LVDS driver	YES
	PWM	PWM driver	YES
	RTC	RTC driver	YES
	IO	GPIO driver	YES
	Touch	Touch Screen driver	YES
	Audio	WM8904 driver	YES
	Camera	Ov5640 driver	YES
	WiFi & BT	6222B/QCA6174 driver	YES
	Watchdog	Watchdog driver	YES
	4G LTE Module	Supports Quectel's EC20 using USB driver	YES
	M.2	NVME driver	YES
	File System	Ramdisk	android ramdisk
Application Programs	GPIO KEY	Key example	YES
	GPIO LED	LED example	YES
	NET	TCP/IP Socket C/S example	YES
	RTC	RTC example	YES
	UART	UART example	YES
	Audio	Primary recorder apk based on Android	YES
	Camera	Primary camera apk based on Android	YES
	WiFi	Primary settings apk based on Android	YES
	BT	Primary settings apk based on Android	YES
	Video	Primary Cactus player based on Android	BIN
Compiler Tool Chain	Cross compiler	4.9.x 20150123	BINARY

Table 1-2 Android Software Features

Ubuntu Linux has changed file system based on Yocto Linux and remains uboot, kernel, dtb, ko and firmware.

Features	Description
Version	Ubuntu 18.04
Desktop	Xfce4
Wifi/bt/NET	Normal function, connman control
4G	Unable to add connman, open manually
CSI/USB camera	Normal function, need to co-operate with gstream
Audio	Can switch output with HDMI
LVDS	Support MYIR's 7-inch Display with 1024 x 600 pixels resolution
Kernel	Support docker configuration

Table 1-3 Ubuntu Linux Software Features

### Order Information

Product Item	Part No.	Packing List
MYC-JX8MX CPU Module	MYC-JX8MQ6-8E1D-130-E	<ul style="list-style-type: none"> <li>➤ One MYC-JX8MX CPU Module</li> </ul> (Product resources provided include user manual, datasheet, base board schematic pdf format, CPU Module pinout description and software packages.)
	MYC-JX8MQ6-8E2D-130-E	
MYD-JX8MX Development Board	MYD-JX8MQ6-8E1D-130-E	
	MYD-JX8MQ6-8E2D-130-E	
MY-CAM003M Camera Module	MY-CAM003M	<b>Add-on Options</b> <ul style="list-style-type: none"> <li>➤ MYD-JX8MX Development Board</li> <li>➤ MY-CAM003M Camera Module</li> <li>➤ MY-LVDS070C 7-inch LCD Module</li> </ul>
MY-LVDS070C 7-inch LCD Module with capacitive touch screen	MY-LVDS070C	



### MYIR Tech Limited

Room 04, 6th Floor, Building No.2, Fada Road, Yunli Smart Park,  
Bantian, Longgang District, Shenzhen, Guangdong, China 518129

E-mail: [sales@myirtech.com](mailto:sales@myirtech.com)

Phone: +86-755-22984836

Fax: +86-755-25532724

Website: <http://www.myirtech.com>





Компания «ЭлектроПласт» предлагает заключение долгосрочных отношений при поставках импортных электронных компонентов на взаимовыгодных условиях!

Наши преимущества:

- Оперативные поставки широкого спектра электронных компонентов отечественного и импортного производства напрямую от производителей и с крупнейших мировых складов;
- Поставка более 17-ти миллионов наименований электронных компонентов;
- Поставка сложных, дефицитных, либо снятых с производства позиций;
- Оперативные сроки поставки под заказ (от 5 рабочих дней);
- Экспресс доставка в любую точку России;
- Техническая поддержка проекта, помощь в подборе аналогов, поставка прототипов;
- Система менеджмента качества сертифицирована по Международному стандарту ISO 9001;
- Лицензия ФСБ на осуществление работ с использованием сведений, составляющих государственную тайну;
- Поставка специализированных компонентов (Xilinx, Altera, Analog Devices, Intersil, Interpoint, Microsemi, Aeroflex, Peregrine, Syfer, Eurofarad, Texas Instrument, Miteq, Cobham, E2V, MA-COM, Hittite, Mini-Circuits, General Dynamics и др.);

Помимо этого, одним из направлений компании «ЭлектроПласт» является направление «Источники питания». Мы предлагаем Вам помощь Конструкторского отдела:

- Подбор оптимального решения, техническое обоснование при выборе компонента;
- Подбор аналогов;
- Консультации по применению компонента;
- Поставка образцов и прототипов;
- Техническая поддержка проекта;
- Защита от снятия компонента с производства.



#### Как с нами связаться

**Телефон:** 8 (812) 309 58 32 (многоканальный)

**Факс:** 8 (812) 320-02-42

**Электронная почта:** [org@eplast1.ru](mailto:org@eplast1.ru)

**Адрес:** 198099, г. Санкт-Петербург, ул. Калинина, дом 2, корпус 4, литера А.