

| PANDUIT PART # | WIRE RANGE | | WIRE STRIP LENGTH +1/32 -0 [+0,8 -0] | DIMENSIONS in. [mm] | | | | INSTALLATION TOOLS |
|----------------|------------|--------------------|--|---------------------|---------------|---------------|----------------|-------------------------------|
| | AWG | [mm ²] | | L | ID-1 | OD-1 | OD-2 | |
| F73-5 | 24 | [0,25] | 7/32 [5,0] | 0.20 [15,0] | 0.03 [0,8] | 0.04 [1,1] | 0.07 [1,7] | CT-1002 CT-1123 |
| F73-7 | | | 9/32 [7,0] | 0.28 [7,0] | 0.03 [0,8] | 0.04 [1,1] | 0.07 [1,7] | |
| F74-5 | 24-22 | [0,34] | 7/32 [5,0] | 0.20 [15,0] | 0.04 [0,9] | 0.05 [1,2] | 0.07 [1,8] | |
| F74-7 | | | 9/32 [7,0] | 0.28 [7,0] | 0.04 [0,9] | 0.05 [1,2] | 0.07 [1,8] | |
| F75-6 | 22-20 | [0,50] | 1/4 [6,0] | 0.24 [6,0] | 0.04 [1,0] | 0.05 [1,3] | 0.08 [2,1] | CT-1002 CT-1003 CT-1123 |
| F75-8 | | | 5/16 [8,0] | 0.31 [8,0] | 0.04 [1,0] | 0.05 [1,3] | 0.08 [2,1] | |
| F75-10 | | | 13/32 [10,0] | 0.39 [10,0] | 0.04 [1,0] | 0.05 [1,3] | 0.08 [2,1] | |
| F76-6 | 18 | [0,75] | 1/4 [6,0] | 0.24 [6,0] | 0.05 [1,2] | 0.06 [1,5] | 0.09 [2,31] | |
| F76-8 | | | 5/16 [8,0] | 0.31 [8,0] | 0.05 [1,2] | 0.06 [1,5] | 0.09 [2,31] | |
| F76-10 | | | 13/32 [10,0] | 0.39 [10,0] | 0.05 [1,2] | 0.06 [1,5] | 0.09 [2,31] | |
| F76-12 | | | 15/32 [12,0] | 0.47 [12,0] | 0.05 [1,2] | 0.06 [1,5] | 0.09 [2,31] | |
| F77-6 | --- | [1,00] | 1/4 [6,0] | 0.24 [6,0] | 0.06 [1,4] | 0.07 [1,7] | 0.10 [2,5] | CT-1002 CT-1003 CT-1123 |
| F77-7 | | | 9/32 [7,0] | 0.28 [7,0] | 0.06 [1,4] | 0.07 [1,7] | 0.10 [2,5] | |
| F77-8 | | | 5/16 [8,0] | 0.31 [8,0] | 0.06 [1,4] | 0.07 [1,7] | 0.10 [2,5] | |
| F77-10 | | | 13/32 [10,0] | 0.39 [10,0] | 0.06 [1,4] | 0.07 [1,7] | 0.10 [2,5] | |
| F77-12 | | | 15/32 [12,0] | 0.47 [12,0] | 0.06 [1,4] | 0.07 [1,7] | 0.10 [2,5] | |
| F78-7 | 16 | [1,50] | 9/32 [7,0] | 0.28 [7,0] | 0.07 [1,7] | 0.08 [2,0] | 0.11 [2,8] | CT-1003 CT-1104 CT-1123 |
| F78-8 | | | 5/16 [8,0] | 0.31 [8,0] | 0.07 [1,7] | 0.08 [2,0] | 0.11 [2,8] | |
| F78-10 | | | 13/32 [10,0] | 0.39 [10,0] | 0.07 [1,7] | 0.08 [2,0] | 0.11 [2,8] | |
| F78-12 | | | 15/32 [12,0] | 0.47 [12,0] | 0.07 [1,7] | 0.08 [2,0] | 0.11 [2,8] | |
| F78-15 | | | 19/32 [15,0] | 0.59 [15,0] | 0.07 [1,7] | 0.08 [2,0] | 0.11 [2,8] | |
| F78-18 | | | 23/32 [18,0] | 0.71 [18,0] | 0.07 [1,7] | 0.08 [2,0] | 0.11 [2,8] | |
| F78-20 | | | 25/32 [20,0] | 0.79 [20,0] | 0.07 [1,7] | 0.08 [2,0] | 0.11 [2,8] | |

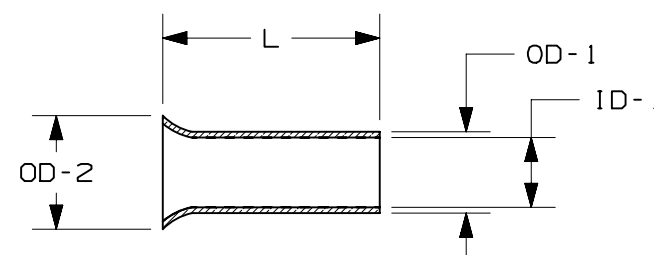
| PANDUIT PART # | WIRE RANGE | | WIRE STRIP LENGTH +1/32 -0 [+0,8 -0] | DIMENSIONS in. [mm] | | | | INSTALLATION TOOLS | | |
|----------------|--------------|--------------------|--|---------------------|---------------|---------------|---------------|-------------------------------|-------------------------------|-------------------------------|
| | AWG | [mm ²] | | L | ID-1 | OD-1 | OD-2 | | | |
| F80-7 | 14 | [2,50] | 9/32 [7,0] | 0.28 [7,0] | 0.09 [2,2] | 0.10 [2,5] | 0.13 [3,4] | CT-1002 CT-1003 CT-1123 | | |
| F80-8 | | | 5/16 [8,0] | 0.31 [8,0] | 0.09 [2,2] | 0.10 [2,5] | 0.13 [3,4] | | | |
| F80-10 | | | 13/32 [10,0] | 0.39 [10,0] | 0.09 [2,2] | 0.10 [2,5] | 0.13 [3,4] | | | |
| F80-12 | | | 15/32 [12,0] | 0.47 [12,0] | 0.09 [2,2] | 0.10 [2,5] | 0.13 [3,4] | | | |
| F80-15 | 19/32 [15,0] | 0.59 [15,0] | 0.09 [2,2] | 0.10 [2,5] | 0.13 [3,4] | | | | | |
| F80-18 | 23/32 [18,0] | 0.71 [18,0] | 0.09 [2,2] | 0.10 [2,5] | 0.13 [3,4] | | | | | |
| F80-20 | 25/32 [20,0] | 0.79 [20,0] | 0.09 [2,2] | 0.10 [2,5] | 0.13 [3,4] | | | | | |
| F81-9 | 12 | [4,00] | 11/32 [8,0] | 0.35 [9,0] | 0.11 [2,8] | 0.13 [3,2] | 0.16 [4,0] | | CT-1003 CT-1104 CT-1123 | |
| F81-10 | | | 13/32 [10,0] | 0.39 [10,0] | 0.11 [2,8] | 0.13 [3,2] | 0.16 [4,0] | | | |
| F81-12 | | | 15/32 [12,0] | 0.47 [12,0] | 0.11 [2,8] | 0.13 [3,2] | 0.16 [4,0] | | | |
| F81-15 | | | 19/32 [15,0] | 0.59 [15,0] | 0.11 [2,8] | 0.13 [3,2] | 0.16 [4,0] | | | |
| F81-18 | 23/32 [18,0] | 0.71 [18,0] | 0.11 [2,8] | 0.13 [3,2] | 0.16 [4,0] | | | | | |
| F81-20 | 25/32 [20,0] | 0.79 [20,0] | 0.11 [2,8] | 0.13 [3,2] | 0.16 [4,0] | | | | | |
| F82-10 | 10 | [6,00] | 13/32 [10,0] | 0.39 [10,0] | 0.14 [3,5] | 0.15 [3,9] | 0.19 [4,7] | CT-1003 CT-1104 CT-1123 | | |
| F82-12 | | | 15/32 [12,0] | 0.47 [12,0] | 0.14 [3,5] | 0.15 [3,9] | 0.19 [4,7] | | | |
| F82-15 | | | 19/32 [15,0] | 0.59 [15,0] | 0.14 [3,5] | 0.15 [3,9] | 0.19 [4,7] | | | |
| F82-18 | | | 23/32 [18,0] | 0.71 [18,0] | 0.14 [3,5] | 0.15 [3,9] | 0.19 [4,7] | | | |
| F82-20 | 25/32 [20,0] | 0.79 [20,0] | 0.14 [3,5] | 0.15 [3,9] | 0.19 [4,7] | | | | | |
| F83-12 | 8 | [10,0] | 15/32 [12,0] | 0.47 [12,0] | 0.18 [4,5] | 0.19 [4,9] | 0.23 [5,8] | | | CT-1004 CT-1104 CT-1123 |
| F83-15 | | | 19/32 [15,0] | 0.59 [15,0] | 0.18 [4,5] | 0.19 [4,9] | 0.23 [5,8] | | | |
| F83-18 | | | 23/32 [18,0] | 0.71 [18,0] | 0.18 [4,5] | 0.19 [4,9] | 0.23 [5,8] | | | |
| F83-20 | | | 25/32 [20,0] | 0.79 [20,0] | 0.18 [4,5] | 0.19 [4,9] | 0.23 [5,8] | | | |
| F83-25 | 31/32 [25,0] | 0.98 [25,0] | 0.18 [4,5] | 0.19 [4,9] | 0.23 [5,8] | | | | | |
| F84-12 | 6 | [16,0] | 15/32 [12,0] | 0.47 [12,0] | 0.23 [5,8] | 0.24 [6,2] | 0.30 [7,5] | | CT-1004 CT-1104 | |
| F84-15 | | | 19/32 [15,0] | 0.59 [15,0] | 0.23 [5,8] | 0.24 [6,2] | 0.30 [7,5] | | | |
| F84-18 | | | 23/32 [18,0] | 0.71 [18,0] | 0.23 [5,8] | 0.24 [6,2] | 0.30 [7,5] | | | |
| F84-20 | | | 25/32 [20,0] | 0.79 [20,0] | 0.23 [5,8] | 0.24 [6,2] | 0.30 [7,5] | | | |
| F84-25 | | | 31/32 [25,0] | 0.98 [25,0] | 0.23 [5,8] | 0.24 [6,2] | 0.30 [7,5] | | | |
| F84-32 | | | 1-1/4 [32,0] | 1.26 [32,0] | 0.23 [5,8] | 0.24 [6,2] | 0.30 [7,5] | | | |

| PANDUIT PART # | WIRE RANGE | | WIRE STRIP LENGTH +1/32 -0 [+0,8 -0] | DIMENSIONS in. [mm] | | | | INSTALLATION TOOLS/DIES | | | | |
|----------------|--------------|--------------------|--|---------------------|----------------|----------------|----------------|-------------------------|-------------------------|--------------|--------------|--------------|
| | AWG | [mm ²] | | L | ID-1 | OD-1 | OD-2 | | | | | |
| F85-12 | 4 | [25] | 15/32 [12,0] | 0.47 [12,0] | 0.29 [7,3] | 0.30 [7,7] | 0.37 [9,5] | CT-1005 | | | | |
| F85-15 | | | 19/32 [15,0] | 0.59 [15,0] | 0.29 [7,3] | 0.30 [7,7] | 0.37 [9,5] | | | | | |
| F85-18 | | | 23/32 [18,0] | 0.71 [18,0] | 0.29 [7,3] | 0.30 [7,7] | 0.37 [9,5] | | | | | |
| F85-25 | | | 31/32 [25,0] | 0.98 [25,0] | 0.29 [7,3] | 0.30 [7,7] | 0.37 [9,5] | | | | | |
| F85-32 | 1 1/4 [32,0] | 1.26 [32,0] | 0.29 [7,3] | 0.30 [7,7] | 0.37 [9,5] | | | | | | | |
| F86-18 | 2 | [35] | 23/32 [18,0] | 0.71 [18,0] | 0.33 [8,3] | 0.34 [8,7] | 0.43 [11,0] | | CT-1006 *CD-2001-F87 | | | |
| F86-20 | | | 25/32 [20,0] | 0.79 [20,0] | 0.33 [8,3] | 0.34 [8,7] | 0.43 [11,0] | | | | | |
| F86-25 | | | 31/32 [25,0] | 0.98 [25,0] | 0.33 [8,3] | 0.34 [8,7] | 0.43 [11,0] | | | | | |
| F86-32 | | | 1 1/4 [32,0] | 1.26 [32,0] | 0.33 [8,3] | 0.34 [8,7] | 0.43 [11,0] | | | | | |
| F87-18 | 1-1/0 | [50] | 23/32 [18,0] | 0.71 [18,0] | 0.41 [10,3] | 0.43 [10,9] | 0.51 [13,0] | | | *CD-2001-F89 | | |
| F87-22 | | | 7/8 [22,0] | 0.87 [22,0] | 0.41 [10,3] | 0.43 [10,9] | 0.51 [13,0] | | | | | |
| F87-25 | | | 31/32 [25,0] | 0.98 [25,0] | 0.41 [10,3] | 0.43 [10,9] | 0.51 [13,0] | | | | | |
| F87-32 | | | 1 1/4 [32,0] | 1.26 [32,0] | 0.41 [10,3] | 0.43 [10,9] | 0.51 [13,0] | | | | | |
| F89-25 | 2/0 | [70] | 31/32 [25,0] | 0.98 [25,0] | 0.49 [12,5] | 0.52 [13,3] | 0.59 [15,0] | *CD-2001-F90 | | | | |
| F89-32 | | | 1 1/4 [32,0] | 1.26 [32,0] | 0.49 [12,5] | 0.52 [13,3] | 0.59 [15,0] | | | | | |
| F90-25 | 3/0 | [95] | 31/32 [25,0] | 0.98 [25,0] | 0.57 [14,5] | 0.60 [15,3] | 0.67 [17,0] | | | | *CD-2001-F91 | |
| F90-30 | | | 1 3/16 [30,0] | 1.18 [30,0] | 0.57 [14,5] | 0.60 [15,3] | 0.67 [17,0] | | | | | |
| F90-32 | 1 1/4 [32,0] | 1.26 [32,0] | 0.57 [14,5] | 0.60 [15,3] | 0.67 [17,0] | | | | | | | |
| F91-32 | 4/0-250 | [120] | 1 1/4 [32,0] | 1.26 [32,0] | 0.65 [16,5] | 0.69 [17,5] | 0.75 [19,0] | | *CD-2001-F92 | | | |
| F91-40 | | | 1 19/32 [40,0] | 1.57 [40,0] | 0.65 [16,5] | 0.69 [17,5] | 0.75 [19,0] | | | | | |
| F92-32 | 300 | [150] | 1 1/4 [32,0] | 1.26 [32,0] | 0.73 [18,5] | 0.77 [19,5] | 0.83 [21,0] | | | | | *CD-2001-F93 |
| F92-38 | | | 1 1/2 [38,0] | 1.50 [38,0] | 0.73 [18,5] | 0.77 [19,5] | 0.83 [21,0] | | | | | |
| F93-32 | 350 | [185] | 1 1/4 [32,0] | 1.26 [32,0] | 0.79 [20,0] | 0.83 [21,2] | 0.93 [23,5] | | | *CD-2001-F94 | | |
| F93-40 | | | 1 19/32 [40,0] | 1.57 [40,0] | 0.79 [20,0] | 0.83 [21,2] | 0.93 [23,5] | | | | | |
| F94-40 | 400 | [240] | 1 19/32 [40,0] | 1.57 [40,0] | 0.90 [22,8] | 0.94 [24,0] | 1.02 [25,8] | | | | | |

- NOTES:
 1. USED FOR:
 A. STRANDED COPPER WIRE ONLY
 B. 221°F [105°C] MAX. OPERATING TEMPERATURE
 2. MATERIAL:
 A. STAMPING: COPPER, TIN PLATED
 3. SEE www.panduit.com FOR PACKAGE QUANTITIES
 4. DIMENSIONS IN BRACKETS ARE METRIC EQUIVALENT
 5. FOR TOLERANCING REFER TO DIN 46228 PART 1



* DIES USED WITH CT-3001 OR CT-3001/E TOOL



| REV | DATE | BY | CHK | APR | DESCRIPTION | ECN |
|-----|----------|-----|-----|------|---|--------|
| 12 | 04.15.13 | BDK | TMR | RTFI | ADDED DIE REFERENCES AND NOTE. F91 METRIC WIRE RANGE WAS [250]. WIRE STRIP LENGTH FOR F91-40, F93-40, F94-40 WAS 1 3/4 [44,0] AND DIM L WAS 1.57 [44,0] | A41670 |
| 11 | 01.19.13 | BDK | BCT | VMB | REVISED AND REDRAWN; ADDED CSA LOGO | A41670 |

| | |
|---|-----------------|
| TITLE FERRULES - NO SLEEVE | |
| CUSTOMER DRAWING | |
| ITEM REVISION NAME N41670BA/12 | PANDUIT |
| DATASET FILE NAME N41670BA_DC/12A | |
| UNLESS OTHERWISE SPECIFIED, DIMENSIONAL TOLERANCES ARE: IN [mm] | |
| .X ± | .XXX ± |
| .XX ± | ANGLES ± |
| THIRD ANGLE PROJECTION | |
| DRAWING NUMBER: A41670 | |
| DRAWN BY JKD | DATE 2/10/99 |
| CHK SKB | SCALE N.T.S. |
| SHT 1 OF 1 | |



Компания «ЭлектроПласт» предлагает заключение долгосрочных отношений при поставках импортных электронных компонентов на взаимовыгодных условиях!

Наши преимущества:

- Оперативные поставки широкого спектра электронных компонентов отечественного и импортного производства напрямую от производителей и с крупнейших мировых складов;
- Поставка более 17-ти миллионов наименований электронных компонентов;
- Поставка сложных, дефицитных, либо снятых с производства позиций;
- Оперативные сроки поставки под заказ (от 5 рабочих дней);
- Экспресс доставка в любую точку России;
- Техническая поддержка проекта, помощь в подборе аналогов, поставка прототипов;
- Система менеджмента качества сертифицирована по Международному стандарту ISO 9001;
- Лицензия ФСБ на осуществление работ с использованием сведений, составляющих государственную тайну;
- Поставка специализированных компонентов (Xilinx, Altera, Analog Devices, Intersil, Interpoint, Microsemi, Aeroflex, Peregrine, Syfer, Eurofarad, Texas Instrument, Miteq, Cobham, E2V, MA-COM, Hittite, Mini-Circuits, General Dynamics и др.);

Помимо этого, одним из направлений компании «ЭлектроПласт» является направление «Источники питания». Мы предлагаем Вам помощь Конструкторского отдела:

- Подбор оптимального решения, техническое обоснование при выборе компонента;
- Подбор аналогов;
- Консультации по применению компонента;
- Поставка образцов и прототипов;
- Техническая поддержка проекта;
- Защита от снятия компонента с производства.



Как с нами связаться

Телефон: 8 (812) 309 58 32 (многоканальный)

Факс: 8 (812) 320-02-42

Электронная почта: org@eplast1.ru

Адрес: 198099, г. Санкт-Петербург, ул. Калинина, дом 2, корпус 4, литера А.