

MAGX-000035-015000

MAGX-000035-01500S



GaN on SiC HEMT Pulsed Power Transistor
15 W, DC - 3.5 GHz

Rev. V1

Features

- GaN on SiC Depletion Mode Transistor
- Common-Source Configuration
- Broadband Class AB Operation
- Thermally Enhanced Package (Flanged: Cu/W, Flangeless: Cu)
- RoHS* Compliant
- +50V Typical Operation
- MTTF = 600 years ($T_J < 200^\circ\text{C}$)

Primary Applications

- Commercial Wireless Infrastructure (WCDMA, LTE, WiMAX)
- Air Traffic Control Radar - Commercial
- Weather Radar - Commercial
- Military Radar - Military
- Public Radio
- Industrial, Scientific and Medical
- SATCOM
- Instrumentation

Description

The MAGX-000035-01500X is a gold-metalized unmatched Gallium Nitride (GaN) on Silicon Carbide RF power transistor suitable for a variety of RF power amplifier applications. Using state of the art wafer fabrication processes, these high performance transistors provide high gain, efficiency, bandwidth, and ruggedness over multiple octave bandwidths for today's demanding application needs.

The MAGX-000035-01500X is constructed using a thermally enhanced flanged (Cu/W) or flangeless (Cu) ceramic package which provides excellent thermal performance. High breakdown voltages allow for reliable and stable operation in extreme mismatched load conditions unparalleled with older semiconductor technologies.

MAGX-000035-015000 (Flanged)



MAGX-000035-01500S (Flangeless)



Ordering Information

Part Number	Description
MAGX-000035-015000	Flanged, Bulk Packaging
MAGX-000035-01500S	Flangeless, Bulk Packaging
MAGX-L20035-015000	Sample Board (1.2 - 1.4 GHz, Flanged)
MAGX-L20035-01500S	Sample Board (1.2 - 1.4 GHz, Flangeless)

1 * Restrictions on Hazardous Substances, European Union Directive 2002/95/EC.

MAGX-000035-015000

MAGX-000035-01500S



GaN on SiC HEMT Pulsed Power Transistor
15 W, DC - 3.5 GHz

Rev. V1

Electrical Specifications¹: Freq. = 1.2 - 1.4 GHz, T_A = 25°C

Parameter	Test Conditions	Symbol	Min.	Typ.	Max.	Units
RF Functional Tests: V_{DD} = 50 V, I_{DQ} = 15 mA, 1 ms Pulse, 10% Duty						
Output Power	P _{IN} = 0.5 W	P _{OUT}	15.0	17.7	-	W
Power Gain	P _{IN} = 0.5 W	G _P	14.8	15.5	-	dB
Drain Efficiency	P _{IN} = 0.5 W	η _D	55	63	-	%
Droop	P _{IN} = 0.5 W	Droop	-	0.1	0.4	dB
Load Mismatch Stability	P _{IN} = 0.5 W	VSWR-S	-	5:1	-	-
Load Mismatch Tolerance	P _{IN} = 0.5 W	VSWR-T	-	10:1	-	-

Electrical Characteristics: T_A = 25°C

Parameter	Test Conditions	Symbol	Min.	Typ.	Max.	Units
DC Characteristics						
Drain-Source Leakage Current	V _{GS} = -8 V, V _{DS} = 175 V	I _{DS}	-	-	750	μA
Gate Threshold Voltage	V _{DS} = 5 V, I _D = 2 mA	V _{GS(TH)}	-5	-3	-2	V
Forward Transconductance	V _{DS} = 5 V, I _D = 500 mA	G _M	0.35	-	-	S
Dynamic Characteristics						
Input Capacitance	V _{DS} = 0 V, V _{GS} = -8 V, F = 1 MHz	C _{ISS}	-	4.4	-	pF
Output Capacitance	V _{DS} = 50 V, V _{GS} = -8 V, F = 1 MHz	C _{OSS}	-	1.9	-	pF
Reverse Transfer Capacitance	V _{DS} = 50 V, V _{GS} = -8 V, F = 1 MHz	C _{RSS}	-	0.2	-	pF

Correct Device Sequencing

Turning the device ON

1. Set V_{GS} to the pinch-off (V_P), typically -5 V.
2. Turn on V_{DS} to nominal voltage (+50V).
3. Increase V_{GS} until the I_{DS} current is reached.
4. Apply RF power to desired level.

Turning the device OFF

1. Turn the RF power off.
2. Decrease V_{GS} down to V_P.
3. Decrease V_{DS} down to 0 V.
4. Turn off V_{GS}.

1. Electrical Specifications measured in MACOM RF evaluation board.

MAGX-000035-015000

MAGX-000035-01500S



GaN on SiC HEMT Pulsed Power Transistor
15 W, DC - 3.5 GHz

Rev. V1

Absolute Maximum Ratings^{2,3,4}

Parameter	Absolute Max.
Input Power	P_{IN} (nominal) + 3 dB
Drain Supply Voltage, V_{DD}	+65 V
Gate Supply Voltage, V_{GG}	-8 V to 0 V
Supply Current, I_{DD}	800 mA
Power Dissipation (P_{AVG}), Pulsed @ 85°C	10.3 W
MTTF ($T_J < 200^\circ\text{C}$)	600 years
Junction Temperature ⁵	200°C
Operating Temperature	-40°C to +95°C
Storage Temperature	-65°C to +150°C
Mounting Temperature	See solder reflow profile
ESD Min. - Charged Device Model (CDM)	150 V
ESD Min. - Human Body Model (HBM)	500 V

2. Operation of this device above any one of these parameters may cause permanent damage.
3. Channel temperature directly affects a device's MTTF. Channel temperature should be kept as low as possible to maximize lifetime.
4. For saturated performance it is recommended that the sum of $(3 \cdot V_{DD} + \text{abs}(V_{GG})) < 175 \text{ V}$.
5. Junction Temperature (T_J) = $T_C + \Theta_{JC} \cdot ((V \cdot I) - (P_{OUT} - P_{IN}))$

Typical transient thermal resistances:

1 ms pulse, 10% duty cycle, $\Theta_{JC} = 5.0^\circ\text{C/W}$

For $T_C = 85^\circ\text{C}$,

$T_J = 132^\circ\text{C}$ @ 50 V, 520 mA-pk, $P_{OUT} = 17.0 \text{ W}$, $P_{IN} = 0.5 \text{ W}$

MAGX-000035-015000

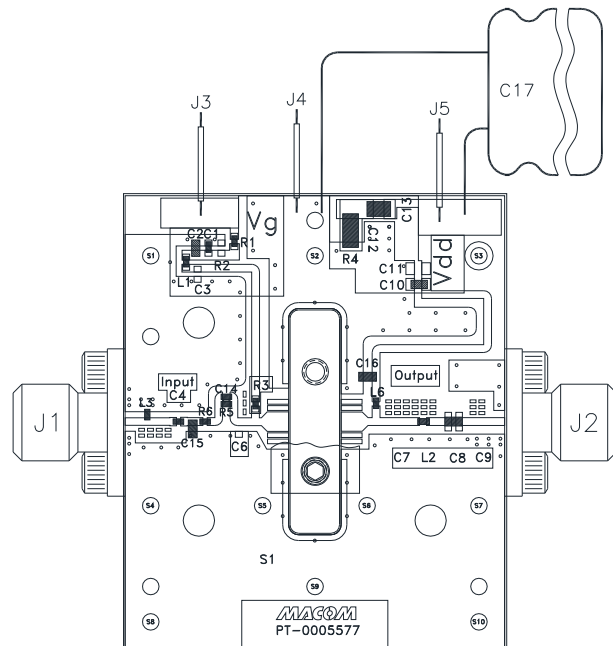
MAGX-000035-01500S



GaN on SiC HEMT Pulsed Power Transistor
15 W, DC - 3.5 GHz

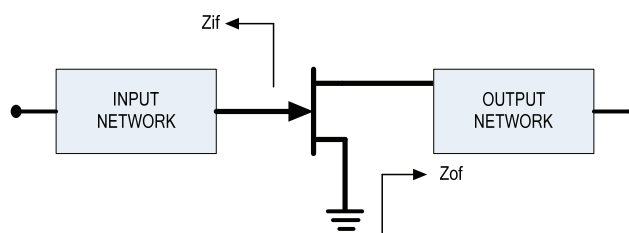
Rev. V1

Test Fixture Assembly (1.2 - 1.4 GHz, 1 ms Pulse, 10% Duty, $V_{DD} = 50$ V, $I_{dq} = 15$ mA)



Test Fixture Impedances

F (GHz)	Z_{IF} (Ω)	Z_{OF} (Ω)
1.2	$1.4 + j3.5$	$2.5 + j3.5$
1.3	$1.3 + j3.8$	$2.7 + j3.9$
1.4	$1.8 + j4.0$	$3.1 + j4.2$



Parts List

Reference Designator	Part	Vendor
C4	0402, 5.1 pF, ± 0.1 pF	ATC
C15	0603, 6.8 pF, ± 0.1 pF	ATC
C2	0603, 82 pF, $\pm 10\%$	ATC
C16	0603, 100 pF, $\pm 10\%$	ATC
C1, C10	0402, 1000 pF, 100 V, 5%	ATC
C8	0603, 30 pF, $\pm 10\%$	ATC
C13	0805, 1 μ F, 100 V, $\pm 20\%$	ATC
C14	0402, 12 pF, $\pm 10\%$	ATC
C17	100 μ F, 160 V, Electrolytic Capacitor	Panasonic
C3, C6, C7, C9, C11, C12, R2	Do Not Populate	-
R3	240 Ω , 0603, 5%	Panasonic
L1, R1	1.0 Ω , 0402, 5%	Panasonic
R4	1.0 Ω , 1206, 5%	Panasonic
R5	10 Ω , 0402, 5%	Panasonic
L3, L6	0402, 3.9 nH, 2%	Coilcraft
L2, R6	0402, 0.0 Ω Resistor	Panasonic
J1, J2	SMA Connector	Tyco Electronics

4 Contact factory for Gerber file or additional circuit information.

MACOM Technology Solutions Inc. (MACOM) and its affiliates reserve the right to make changes to the product(s) or information contained herein without notice. Visit www.macomtech.com for additional data sheets and product information.

- North America Tel: 800.366.2266 / Fax: 978.366.2266
- Europe Tel: 44.1908.574.200 / Fax: 44.1908.574.300
- Asia/Pacific Tel: 81.44.844.8296 / Fax: 81.44.844.8298

MAGX-000035-015000

MAGX-000035-01500S



GaN on SiC HEMT Pulsed Power Transistor
15 W, DC - 3.5 GHz

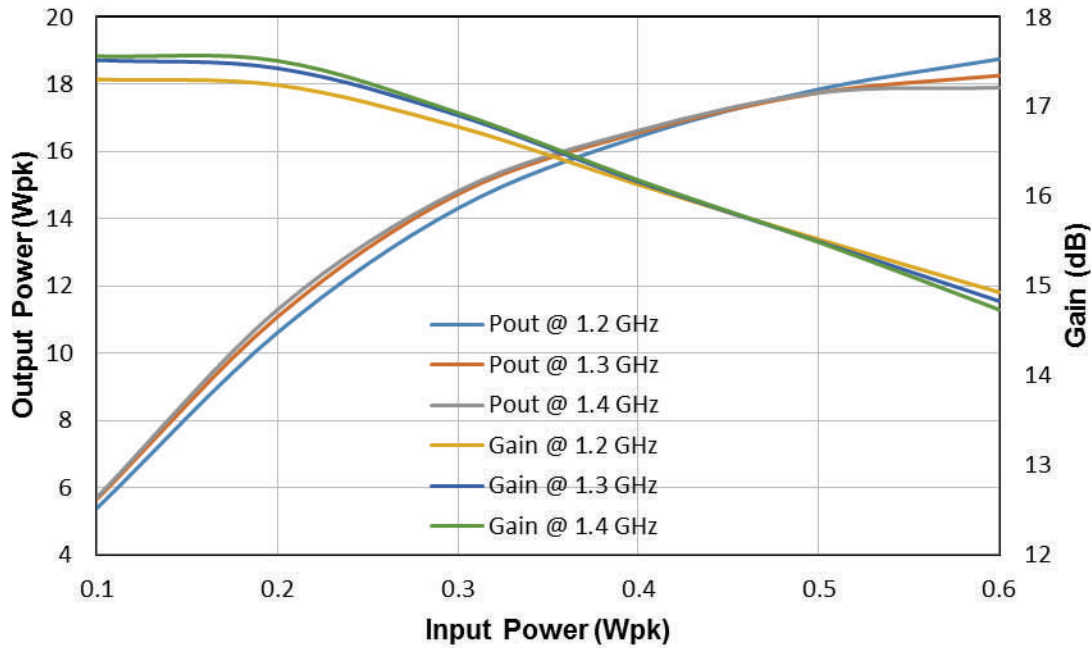
Rev. V1

Application Section

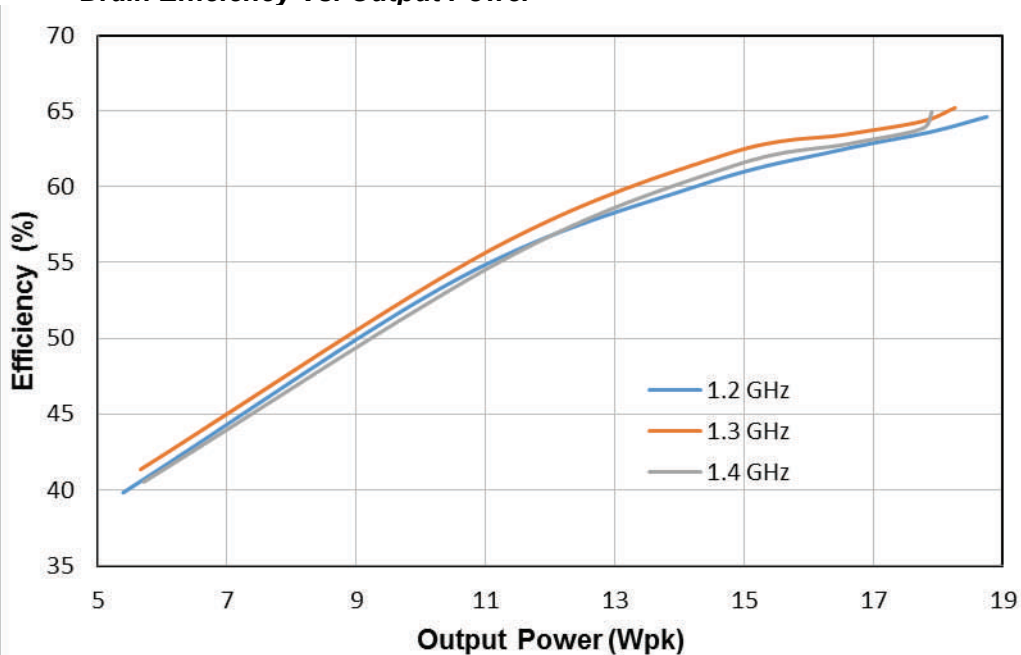
Typical Performance Curves

1.2 - 1.4 GHz, 1 ms Pulse, 10% Duty, $V_{DD} = 50\text{ V}$, $I_{dq} = 15\text{ mA}$, $T_A = 25^\circ\text{C}$

Output Power and Gain Vs. Input Power



Drain Efficiency Vs. Output Power



MAGX-000035-015000

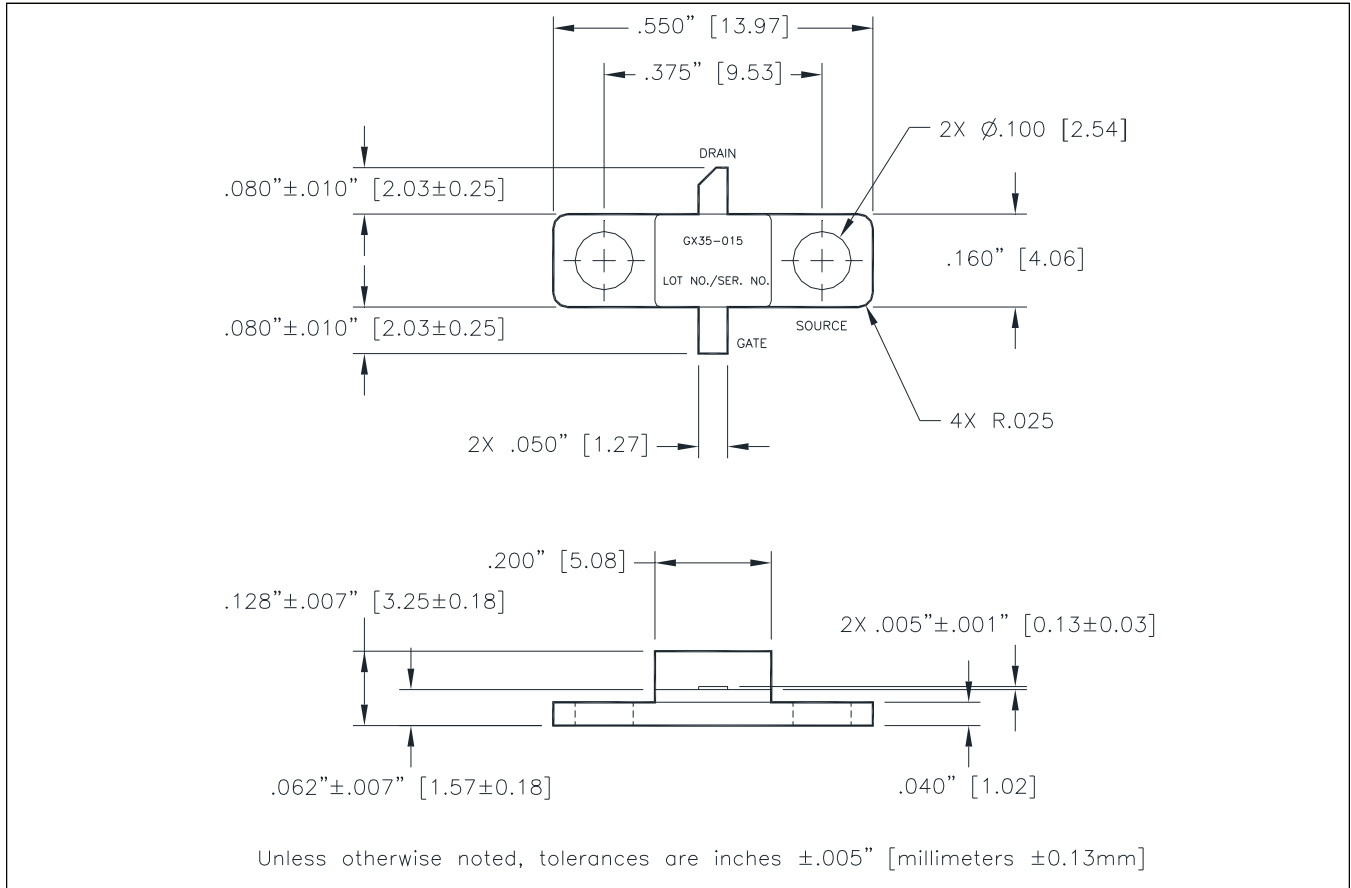
MAGX-000035-01500S



GaN on SiC HEMT Pulsed Power Transistor
15 W, DC - 3.5 GHz

Rev. V1

Outline Drawing MAGX-000035-015000 (Flanged)



MAGX-000035-015000

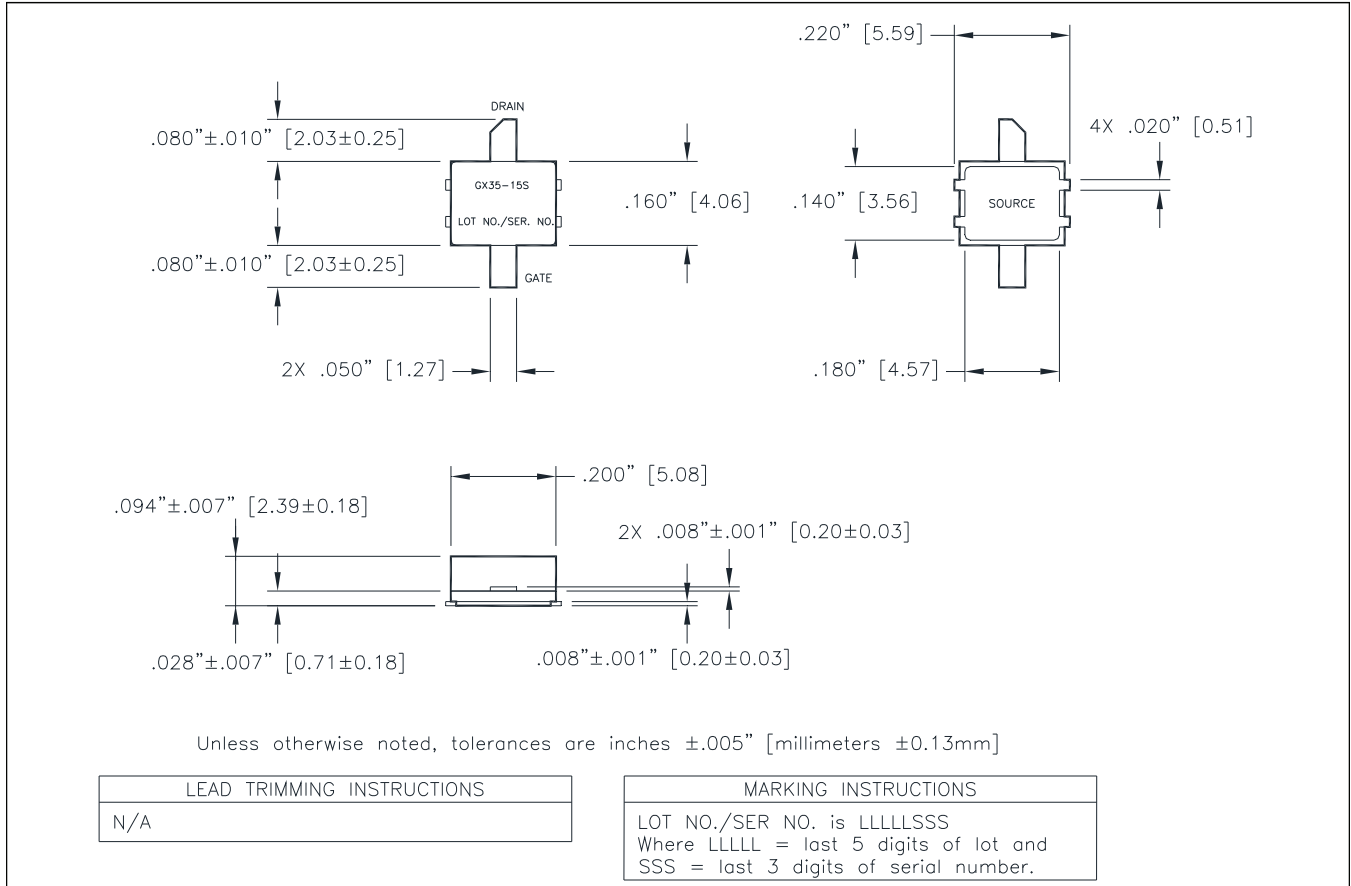
MAGX-000035-01500S



GaN on SiC HEMT Pulsed Power Transistor
15 W, DC - 3.5 GHz

Rev. V1

Outline Drawing MAGX-000035-01500S (Flangeless)





Компания «ЭлектроПласт» предлагает заключение долгосрочных отношений при поставках импортных электронных компонентов на взаимовыгодных условиях!

Наши преимущества:

- Оперативные поставки широкого спектра электронных компонентов отечественного и импортного производства напрямую от производителей и с крупнейших мировых складов;
- Поставка более 17-ти миллионов наименований электронных компонентов;
- Поставка сложных, дефицитных, либо снятых с производства позиций;
- Оперативные сроки поставки под заказ (от 5 рабочих дней);
- Экспресс доставка в любую точку России;
- Техническая поддержка проекта, помощь в подборе аналогов, поставка прототипов;
- Система менеджмента качества сертифицирована по Международному стандарту ISO 9001;
- Лицензия ФСБ на осуществление работ с использованием сведений, составляющих государственную тайну;
- Поставка специализированных компонентов (Xilinx, Altera, Analog Devices, Intersil, Interpoint, Microsemi, Aeroflex, Peregrine, Syfer, Eurofarad, Texas Instrument, Miteq, Cobham, E2V, MA-COM, Hittite, Mini-Circuits, General Dynamics и др.);

Помимо этого, одним из направлений компании «ЭлектроПласт» является направление «Источники питания». Мы предлагаем Вам помощь Конструкторского отдела:

- Подбор оптимального решения, техническое обоснование при выборе компонента;
- Подбор аналогов;
- Консультации по применению компонента;
- Поставка образцов и прототипов;
- Техническая поддержка проекта;
- Защита от снятия компонента с производства.



Как с нами связаться

Телефон: 8 (812) 309 58 32 (многоканальный)

Факс: 8 (812) 320-02-42

Электронная почта: org@eplast1.ru

Адрес: 198099, г. Санкт-Петербург, ул. Калинина, дом 2, корпус 4, литера А.