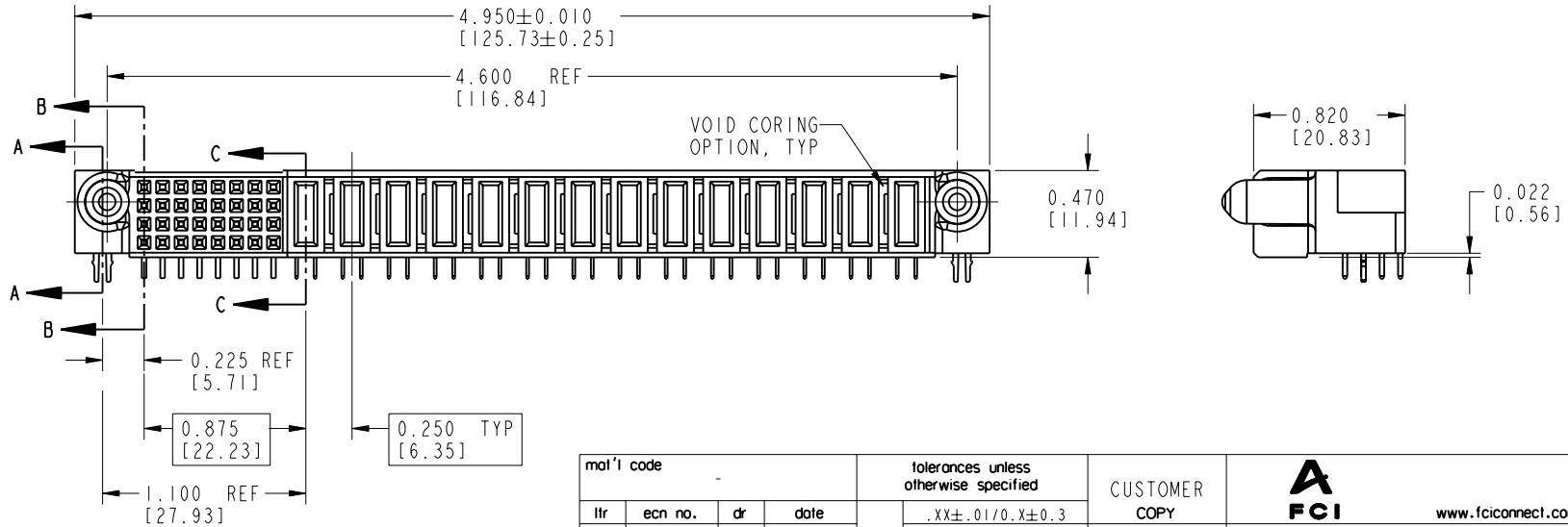
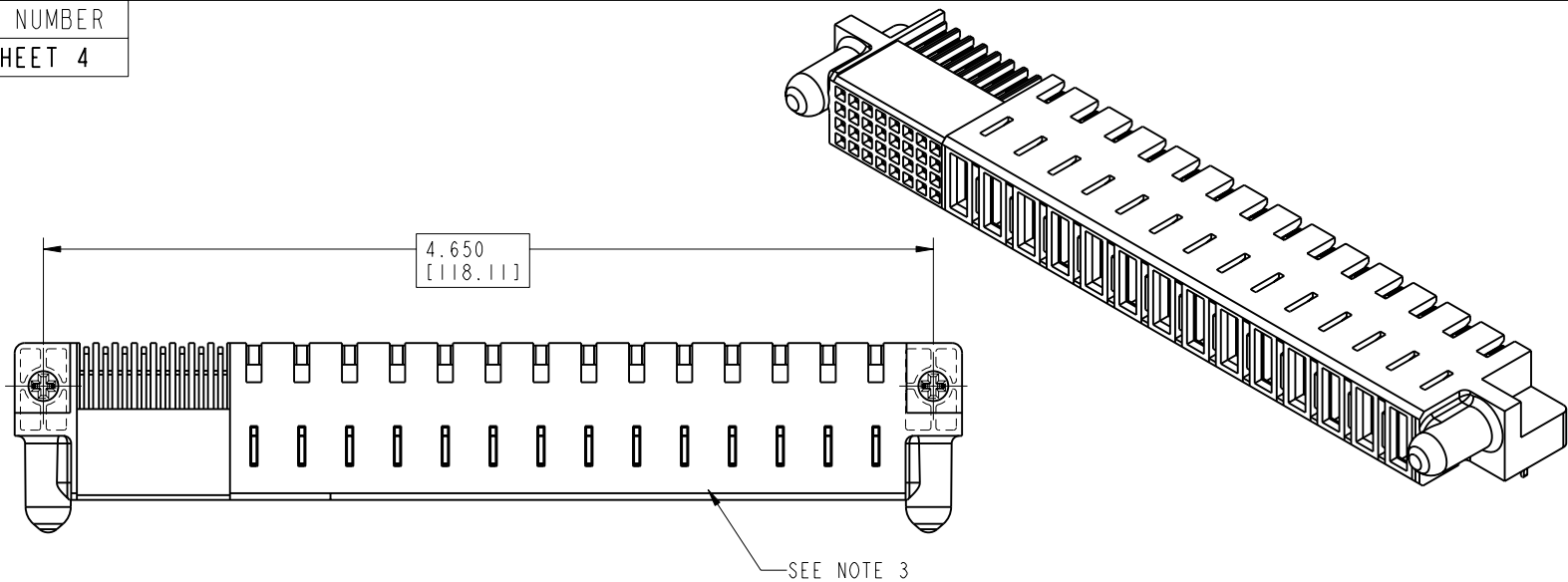


Tous droits strictement réservés. Reproduction ou communication o des liens interdite sous quelque forme que ce soit sans autorisation écrite du propriétaire. Propriété de c FCI. Droits de reproduction FCI.

All rights strictly reserved. Reproduction or issue to third parties in any form, whomever is not permitted without written authority from the proprietor. Property of FCI. Copyright FCI.



PRODUCT NUMBER  
SEE SHEET 4



THIS FILE WAS ORIGINALLY CREATED IN THE PRO ENGINEER ENVIRONMENT AND ANY FUTURE REVISIONS TO THIS FILE MUST BE MADE IN THE PRO ENGINEER ENVIRONMENT

mat'l code				tolerances unless otherwise specified		CUSTOMER COPY		FCI www.fciconnect.com	
ltr	ecn no.	dr	date	linear	.XX±.01/0.X±0.3	projection		title	
G	DG05-0363	GuoJM	09/28/05	angles	.XXX±.005/0.XX±0.13	INCH / MM		14P + 32S RIGHT ANGLE RECEPTACLE	
				dr	.XXX±.0020/.XXX±.051	scale		product family	
				engr	0°±2°	1:1		PwrBlade	
				chr				code	
				appd				213	
				sheet index	revision sheet	G	G	G	G
				1	2	3	4	SHEET 1 OF 4	
								cage code	
								22526	

Tous droits strictement réservés. Reproduction ou communication o des liers interdite sous quelque forme que ce soit sans autorisation écrite du propriétaire. Propriete de c FCI. Droits de reproduction FCI.



All rights strictly reserved. Reproduction or issue to third parties in any form, whenever is not permitted without written authority from the proprietor. Property of FCI. Copyright FCI.

PRODUCT NUMBER  
SEE SHEET 4

CONNECTOR NOTES:

1. HOUSING MATERIAL: UL 94V-0 GLASS FILLED HIGH TEMP THERMO PLASTIC  
SIGNAL CONTACT MATERIAL: COPPER ALLOY  
POWER CONTACT: COPPER ALLOY

2. PLATING:  
51402-XXYYY Singal Pin:30u"/0.76um Au OVER 50u"/1.27um Ni ON THE CONTACT AREA,  
AND 100u"/2.54um SnPb PLATING OVER 50u"/1.27um Ni ON THE TERMINATION SECTION.  
Power Pin:30u"/0.76um Au OVER 50u"/1.27um Ni ON THE CONTACT AREA,  
AND 100u"/2.54um SnPb PLATING OVER 50u"/1.27um Ni ON THE TERMINATION SECTION.

51402-XXYYLFF Singal Pin:30u"/0.76um Au OVER 50u"/1.27um Ni ON THE CONTACT AREA,  
AND 78u"/2.00um Sn PLATING OVER 50u"/1.27um Ni ON THE TERMINATION SECTION.  
Power Pin:30u"/0.76um Au OVER 50u"/1.27um Ni ON THE CONTACT AREA,  
AND 78u"/2.00um Sn PLATING OVER 50u"/1.27um Ni ON THE TERMINATION SECTION.

PART NUMBER 51402-XXYYLFF MEETS EUROPEAN UNION DIRECTIVE AND OTHER COUNTRY REGULATIONS AS DESCRIBED IN GS-22-008.

THE HOUSING WILL WITHSTAND EXPOSURE TO 260° PEAK TEMPERATURE FOR 10 SECONDS IN A WAVE SOLDER APPLICATION WITH A CIRCUIT BOARD.

3. MANUFACTURER'S NAME, P/N, AND DATE CODE TO APPEAR ON THIS SURFACE.

PCB NOTES:

- 4. ALL DIMENSIONS ARE BASIC UNLESS OTHERWISE SPECIFIED.
- 5. ALL THRU HOLES ARE LOCATED WITH A TRUE POSITION OF 0.004".
- 6. ALL DIAMETERS ARE FINISHED HOLE SIZES
- 7. Ø0.098 THRU HOLES ARE UNPLATED.

THIS FILE WAS ORIGINALLY CREATED IN THE PRO ENGINEER ENVIRONMENT AND ANY FUTURE REVISIONS TO THIS FILE MUST BE MADE IN THE PRO ENGINEER ENVIRONMENT

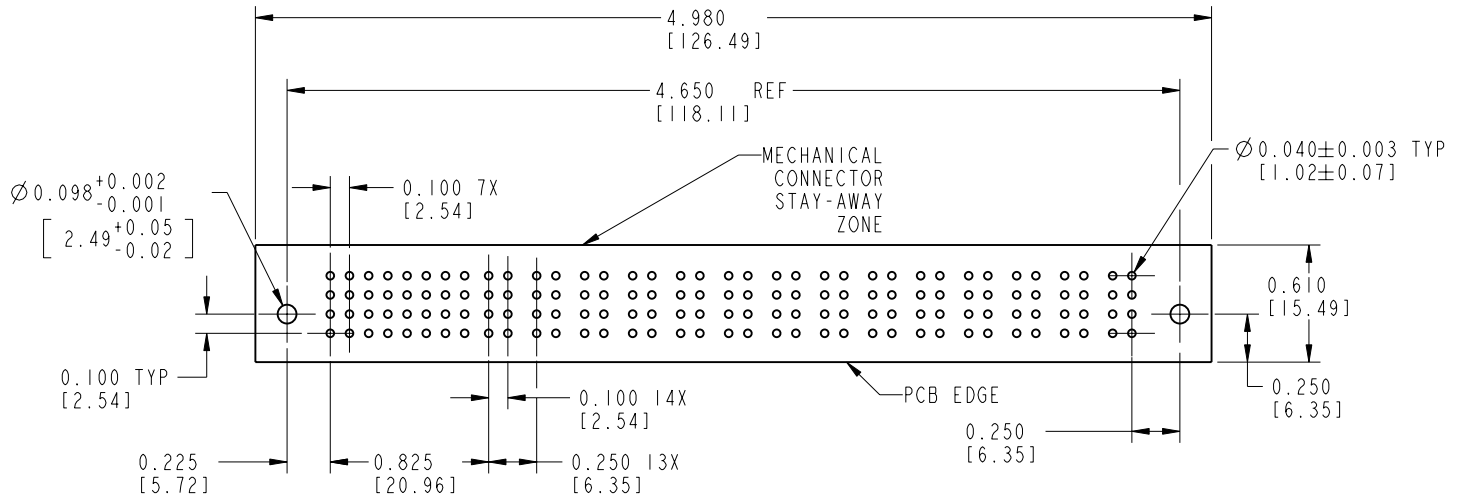
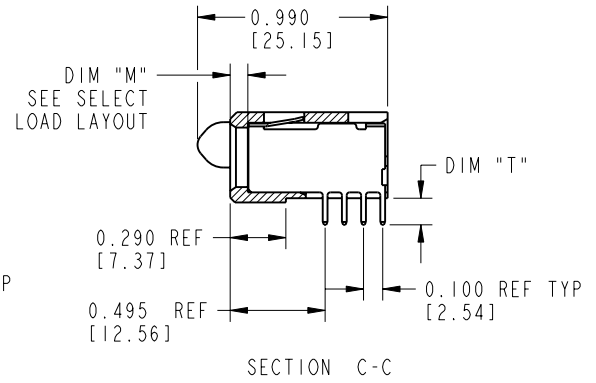
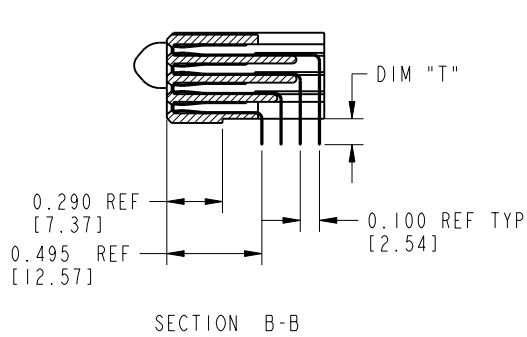
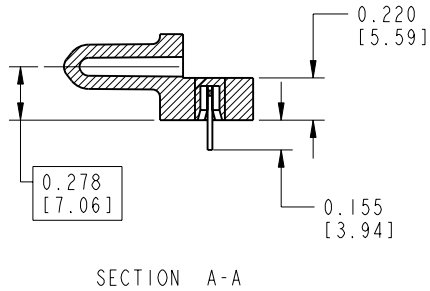
mat'l code		SEE NOTES		tolerances unless otherwise specified		CUSTOMER		www.fciconnect.com	
lfr	ecn no.	dr	date	linear	.XX±.01/0.X±0.3	COPY			
G				linear	.XXX±.005/0.XX±0.13	projection		title	
				angles	.XXX±.0020/.XXX±.051			14P + 32S RIGHT ANGLE RECEPTACLE	
				dr	0°±2°	INCH / MM		product family	
				engr	S. ROYER 10-01-99	scale		PwrBlade	
				chr	J. BROWN 10-01-99	1:1		code	
				appd	J. BROWN 10-01-99			size	
sheet index		revision sheet						dwg no	
								A 51402	
								213	
								SHEET 2 OF 4	

Tous droits strictement réservés. Reproduction ou communication o des liens interdite sous quelque forme que ce soit sans autorisation écrite du propriétaire. Propriété de c FCI. Droits de reproduction FCI.

**FCI**

All rights strictly reserved. Reproduction or issue to third parties in any form, whomever is not permitted without written authority from the proprietor. Property of FCI. Copyright FCI.

PRODUCT NUMBER  
SEE SHEET 4



RECOMMENDED PCB LAYOUT

mat'l code				SEE NOTES		tolerances unless otherwise specified		CUSTOMER		 www.fciconnect.com	
lfr	ecn no.	dr	date	linear	.XX±.01/0.X±0.3	projection		COPY		title	
G				angles	.XXX±.005/0.XX±0.13					14P + 32S	
				dr	.XXX±.0020/.XXX±.051	INCH / MM		product family		PwrBlade	
				engr	0°±2°	scale		size		code	
				chr	S. ROYER 10-01-99	1:1		dwg no		213	
				appd	J. BROWN 10-01-99			A		3 OF 4	
sheet index		revision sheet									

THIS FILE WAS ORIGINALLY CREATED IN THE PRO ENGINEER ENVIRONMENT AND ANY FUTURE REVISIONS TO THIS FILE MUST BE MADE IN THE PRO ENGINEER ENVIRONMENT

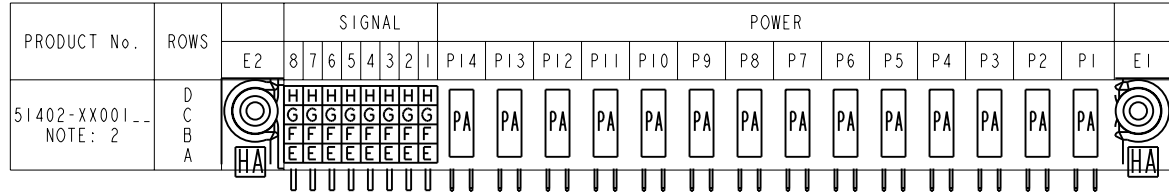
Tous droits strictement réservés. Reproduction ou communication o des liers interalle sous quelque forme que ce soit sans autorisation écrite du propriétaire. Propriete de c FCI. Droits de reproduction FCI.

All rights strictly reserved. Reproduction or issue to third parties in any form, whenever is not permitted without written authority from the proprietor. Property of FCI. Copyright FCI.

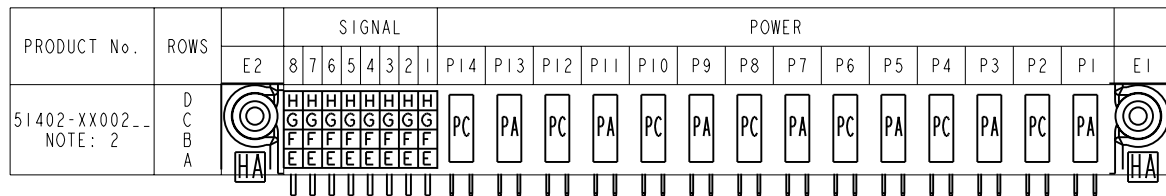


PRODUCT NUMBER  
SEE TABLE

ITEM NO.	QTY	DIM "M" MATING LENGTH ±.010		DIM "T" TAIL LENGTH ±010		CONTACT TYPE
E	8	N/A	[N/A]	0.135	[3.43]	SIGNAL
F	8	N/A	[N/A]	0.135	[3.43]	SIGNAL
G	8	N/A	[N/A]	0.135	[3.43]	SIGNAL
H	8	N/A	[N/A]	0.135	[3.43]	SIGNAL
PA	14	0.042	[1.07]	0.135	[3.43]	POWER
HA	2	N/A	[N/A]	N/A	[N/A]	HOLD-DOWN



ITEM NO.	QTY	DIM "M" MATING LENGTH ±.010		DIM "T" TAIL LENGTH ±.010		CONTACT TYPE
E	8	N/A	[N/A]	0.135	[3.43]	SIGNAL
F	8	N/A	[N/A]	0.135	[3.43]	SIGNAL
G	8	N/A	[N/A]	0.135	[3.43]	SIGNAL
H	8	N/A	[N/A]	0.135	[3.43]	SIGNAL
PA	7	0.042	[1.07]	0.135	[3.43]	POWER
PC	7	0.092	[2.34]	0.135	[3.43]	POWER
HA	2	N/A	[N/A]	N/A	[N/A]	HOLD-DOWN



mat'l code				SEE NOTES				tolerances unless otherwise specified				CUSTOMER				www.fciconnect.com			
ltr	ecr no.	dr	date	linear	.XX±.01/0.X±0.3			COPY				title							
G				angles	.XXX±.005/0.XX±0.13			projection				14P + 32S							
				dr	.XXX±.0020/.XXX±.051							RIGHT ANGLE RECEPTACLE							
				engr	0°±2°			INCH / MM				product family PwrBlade							
				chr	S. ROYER	10-01-99			scale 1:1				size						
				appd	J. BROWN	10-01-99			A				dwg no 51402						
sheet index		revision sheet		code		213		SHEET		4 OF 4		code		22526		4			

THIS FILE WAS ORIGINALLY CREATED IN THE PRO ENGINEER ENVIRONMENT AND ANY FUTURE REVISIONS TO THIS FILE MUST BE MADE IN THE PRO ENGINEER ENVIRONMENT



Компания «ЭлектроПласт» предлагает заключение долгосрочных отношений при поставках импортных электронных компонентов на взаимовыгодных условиях!

Наши преимущества:

- Оперативные поставки широкого спектра электронных компонентов отечественного и импортного производства напрямую от производителей и с крупнейших мировых складов;
- Поставка более 17-ти миллионов наименований электронных компонентов;
- Поставка сложных, дефицитных, либо снятых с производства позиций;
- Оперативные сроки поставки под заказ (от 5 рабочих дней);
- Экспресс доставка в любую точку России;
- Техническая поддержка проекта, помощь в подборе аналогов, поставка прототипов;
- Система менеджмента качества сертифицирована по Международному стандарту ISO 9001;
- Лицензия ФСБ на осуществление работ с использованием сведений, составляющих государственную тайну;
- Поставка специализированных компонентов (Xilinx, Altera, Analog Devices, Intersil, Interpoint, Microsemi, Aeroflex, Peregrine, Syfer, Eurofarad, Texas Instrument, Miteq, Cobham, E2V, MA-COM, Hittite, Mini-Circuits, General Dynamics и др.);

Помимо этого, одним из направлений компании «ЭлектроПласт» является направление «Источники питания». Мы предлагаем Вам помощь Конструкторского отдела:

- Подбор оптимального решения, техническое обоснование при выборе компонента;
- Подбор аналогов;
- Консультации по применению компонента;
- Поставка образцов и прототипов;
- Техническая поддержка проекта;
- Защита от снятия компонента с производства.



#### Как с нами связаться

**Телефон:** 8 (812) 309 58 32 (многоканальный)

**Факс:** 8 (812) 320-02-42

**Электронная почта:** [org@eplast1.ru](mailto:org@eplast1.ru)

**Адрес:** 198099, г. Санкт-Петербург, ул. Калинина, дом 2, корпус 4, литера А.