

## MAX22191 Evaluation Kit

Evaluates: MAX22191

### General Description

The MAX22191 evaluation kit (EV kit) is a fully assembled and tested circuit board that demonstrates the functionality of the MAX22191 digital input in an optical isolator circuit. The EV kit features two circuits: one for a 24V digital input signal and one for a 48V input signal.

### Features

- 24V and 48V Circuits for Easy Evaluation
- Proven PCB Layout
- Fully Assembled and Tested

[Ordering Information](#) appears at end of data sheet.

### Quick Start

#### Required Equipment

- MAX22191 EV kit
- 24V Digital signal generator
- Oscilloscope

#### Startup Procedure

The EV kit is fully assembled and tested. Follow the steps below to verify board operation:

- 1) Ensure that the jumpers are in the default position ([Table 1](#)).
- 2) Connect the digital signal generator to the IN+ test point (TP3) and IN- test point (TP4).
- 3) Connect the oscilloscope to the IN+ test point (TP3), and the OUT (TP14) test point. Connect return terminals to the IN- test point (TP4)
- 4) Set the digital signal generator to generate a 0V–24V 2kHz pulse.
- 5) Turn on the digital signal generator.
- 6) Monitor the IN+ and OUT signals. Verify that the OUT signal toggles as expected.

## Detailed Description of Hardware

The MAX22191 EV kit is a fully assembled and tested circuit board for evaluating the MAX22191 digital input (DI) with either a 24V or 48V input.

### Powering the MAX22191 EV Kit

The MAX22191 can be powered parasitically, from the signal on IN, or from a local  $V_{CC}$  supply. To power the circuit parasitically, ensure that the  $V_{CC}$  jumper is set to LOW (J9 or J10 is 2-3) and apply a digital input signal to IN+.

To power the circuit from a local power supply, connect the  $V_{CC}$  jumper to 'TP' (J9 or J10 to 1-2) and apply a 3V to 5.5V supply to the  $V_{CC}$  test point.

### Selecting the Test Circuit (24V or 48V)

The MAX22191 EV kit supports 0-24V or 0-48V digital input (DI) signals. These circuits are clearly labeled on the silkscreen.

In the 48V circuit, R1 and R2 are used to shift the input voltage, such that the IEC 61131-2 thresholds are met for a 48V input signal. Additionally, R1 limits surge current, allowing for a higher voltage TVS clamp on the input.

Apply the digital input (DI) signal to the J1 terminal block when using signal voltages above 30V. Apply the DI signal to the J2 terminal block when using signal voltages below 30V.

### Testing the MAX22191 as a Current-Sinking Input

The MAX22191 EV kit can be used to evaluate the device in either a current sinking or current sourcing configuration.

To test the MAX22191 as a current sinking input, connect the proximity sensor/switch to the IN+ test point (TP1 or TP3) or terminal block (J1 or J2) on the EV kit. Connect the negative/return terminal of the sensor/switch to positive output of the 24V or 48V supply. Connect the return terminal of the supply to the IN- test point (TP2 or TP4) or terminal block (J1 or J2).

### Testing the MAX22191 as a Current Sourcing Input

The MAX22191 EV kit can be used to evaluate the device in either a current sinking or current sourcing configuration.

To test the MAX22191 as a current sourcing input, connect the proximity sensor/switch to the negative terminal of the 24V or 48V supply. Connect the positive terminal of the supply to the IN+ test point (TP1 or TP3) or terminal block (J1 or J2) on the EV kit. Connect the negative/return terminal of the sensor/switch to IN- test point (TP2 or TP4) or terminal block (J1 or J2).

### Evaluating the MAX22191 with an Optical Isolator ( $V_{CC} = 0V$ )

The MAX22191 includes an on-board high-speed optical isolator for easy evaluation. To use the optical isolator, set  $V_{CC} = 0V$  (J9 or J10 to 2-3) and connect an isolated supply between 2.7V and 5.5 to the  $V_{DD}$  test point (TP9 or TP11) on the isolated side of the board. Connect an oscilloscope to the VO test point (TP10 or TP12) to see the output of the isolator switch as the input signal (IN+) switches.

### Evaluating the MAX22191 with an Optical Isolator ( $3V \leq V_{CC} \leq 5.5V$ )

OUT is a push-pull buffered output when  $V_{CC}$  is present. Remove the R13 or R15 resistor and connect a resistive load to R9/R10 to test functionality in this mode.

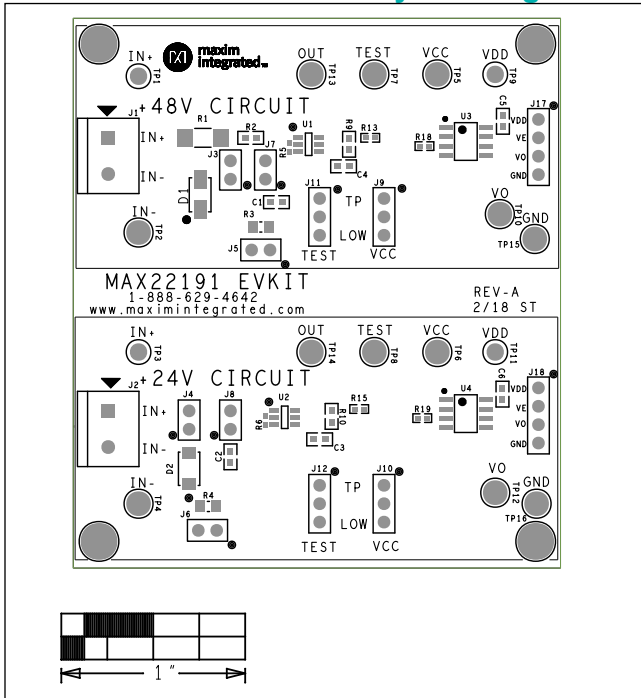
Table 1. Jumper Table (J3–J12)

JUMPER	SHUNT POSITION	DESCRIPTION
J3	Open	58V TVS diode connected to IN+ on 48V circuit.
	<b>Closed*</b>	58V TVS diode not connected to IN+ on 48V circuit.
J4	Open	33V TVS diode connected to IN+ on 24V circuit.
	<b>Closed*</b>	33V TVS diode not connected to IN+ on 24V circuit.
J5	<b>Open*</b>	10Ω resistor connected between IN- and GND pin on IC on 48V circuit. This resistor can be used to monitor return current.
	Closed	IN- is connected directly to GND pin on the IC on the 48V circuit.
J6	<b>Open*</b>	10Ω resistor connected between IN- and GND pin on IC on 24V circuit. This resistor can be used to monitor return current.
	Closed	IN- is connected directly to GND pin on the IC on the 24V circuit.
J7	<b>Open*</b>	10nF capacitor connected to IN+ on 48V circuit.
	Closed	10nF capacitor not connected to IN+ on 48V circuit.
J8	<b>Open*</b>	10nF capacitor connected to IN+ on 24V circuit.
	Closed	10nF capacitor not connected to IN+ on 24V circuit.
J9	1-2	VCC is connected low on the 48V circuit.
	<b>2-3*</b>	VCC is connected to the test point (TP5) on the 48V circuit. Connect an external 3V to 5.5V supply to VCC to power the device.
J10	1-2	VCC is connected low on the 24V circuit.
	<b>2-3*</b>	VCC is connected to the test point (TP6) on the 24V circuit. Connect an external 3V to 5.5V supply to VCC to power the device.
J11	1-2	TEST is connected to GND on the 48V circuit.
	<b>2-3*</b>	TEST is connected to the TEST test point (TP7) on the 48V circuit.
J12	1-2	TEST is connected to GND on the 24V circuit.
	<b>2-3*</b>	TEST is connected to the TEST test point (TP8) on the 24V circuit.

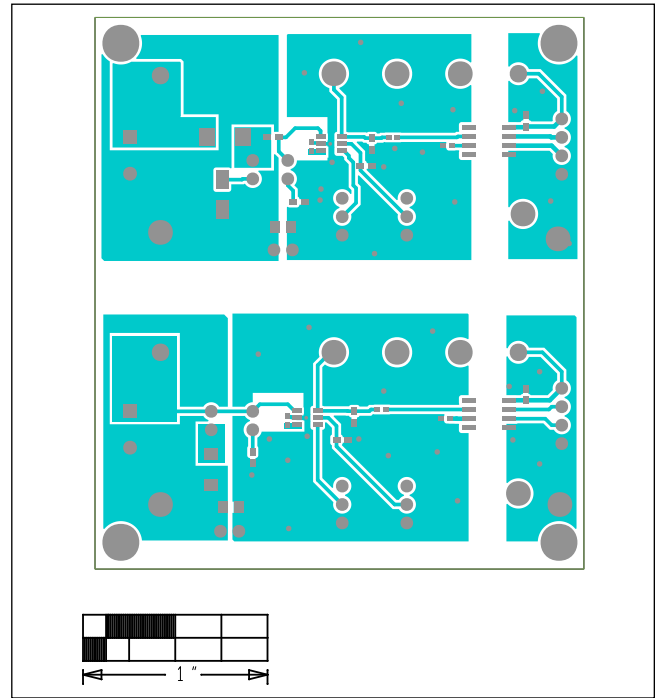
MAX22191 EV Kit Bill of Materials

ITEM	REF-DES	DNI/D NP	QTY	MFG PART #	MFG	VALUE	DESCRIPTION	
1	C1, C2, C5, C6	-	4	GRM188R72A103KA01	MURATA	0.01UF	CAPACITOR; SMT (0603); CERAMIC CHIP; 0.01UF ; 100V; TOL=10%; TG=-55 DEGC TO +125 DEGC; TC=X7R	
2	C3, C4	-	2	GRM188R61A105KA61	MURATA	1UF	CAPACITOR; SMT (0603); CERAMIC CHIP; 1UF; 10V; TOL=10%; MODEL#; TG=-55 DEGC TO +85 DEGC; TC=X5R;	
3	D1	-	1	C1608X5R1A105K	TDK	58V	DIODE; TVS; SMA; VRM=58V; IPP=4.3A	
4	D2	-	1	SMAJ58CA	DIODES INCORPORATED	33V	DIODE; TVS; SMA (DO-214AC); VRM=33V; IPP=7.5A	
5	J1, J2	-	2	SMAJ33CA	VISHAY GENERAL SEMICONDUCTOR	1729018	CONNECTOR; FEMALE; THROUGH HOLE; GREEN TERMINAL BLOCK; RIGHT ANGLE; 2PINS	
6	J3-J8	-	6	1729018	PHOENIX CONTACT	TSW-102-23-G-S	CONNECTOR; THROUGH HOLE; SINGLE ROW; STRAIGHT; 2PINS; -55 DEGC TO +125 DEGC	
7	J9-J12	-	4	TSW-102-23-G-S	SAMTEC	TSW-103-23-G-S	CONNECTOR; THROUGH HOLE; SINGLE ROW; STRAIGHT; 3PINS; -55 DEGC TO +125 DEGC	
8	J17, J18	-	2	TSW-104-23-G-S	SAMTEC	TSW-104-23-G-S	CONNECTOR; THROUGH HOLE; SINGLE ROW; STRAIGHT; 4PINS	
9	R1	-	1	CMB02070X1501G	VISHAY BEYSCHLAG	1.5K	RESISTOR; SMT; 1.5K OHM; 2%; 1W; CARBON FILM	
10	R2	-	1	CRCW06031K20FK	VISHAY DALE	1.2K	RESISTOR; 0603; 1.2K; 1%; 100PPM; 0.10W; THICK FILM	
11	R3, R4	-	2	6ENF10R0V	VISHAY DALE; PANASONIC	10	RESISTOR; 0805; 10 OHM; 1%; 100PPM; 0.125W; THICK FILM	
12	R5, R6	-	2	CRCW040240K2FK	VISHAY DALE	40.2K	RESISTOR; 0402; 40.2K OHM; 1%; 100PPM; 0.063W; THICK FILM	
13	R11, R12	-	2	CRCW060310R0FK; ERJ-3EKF1002	VISHAY DALE; PANASONIC	10K	RESISTOR; 0603; 10K; 1%; 100PPM; 0.10W; THICK FILM	
14	R13, R15, R18, R19	-	4	RC0402JR-070RL; CR0402-16W-000RJT	YAGEO PHYCOMP; VENKEL LTD.	0	RESISTOR; 0402; 0 OHM; 5%; JUMPER; 0.063W; THICK FILM	
15	TP1, TP3, TP9, TP11	-	4	5010	KEYSTONE	N/A	TEST POINT WITH 1.80MM HOLE DIA; RED; MULTIPURPOSE; TEST POINT; PIN DIA=0.125IN; TOTAL LENGTH=0.445IN; BOARD HOLE=0.063IN; BLACK; PHOSPHOR BRONZE WIRE SILVER PLATE FINISH;	
16	TP2, TP4, TP15, TP16	-	4	5011	KEYSTONE	N/A	TEST POINT; PIN DIA=0.125IN; TOTAL LENGTH=0.445IN; BOARD HOLE=0.063IN; YELLOW; PHOSPHOR BRONZE WIRE SILVER PLATE FINISH;	
17	TP5-TP8, TP10, TP12-TP14	-	8	5014	KEYSTONE	N/A	TEST POINT; PIN DIA=0.125IN; TOTAL LENGTH=0.445IN; BOARD HOLE=0.063IN; YELLOW; PHOSPHOR BRONZE WIRE SILVER PLATE FINISH;	
18	U1, U2	-	2	MAX22191AUT+	MAXIM	MAX22191AU T+	EVKIT PART-IC; PARASITICALLY POWERED TYPE 3 DIGITAL INPUT; PACKAGE DWG NO.: 21-0058; PACKAGE LAND PATTERN: 90-0175; SOT23-6	
19	U3, U4	-	2	ACPL-061L-560E	BROADCOM LIMITED	ACPL-061L-560E	IC; OPTO; UL-TRA LOW POWER 10MBD DIGITAL CMOS OPTOCOUPLER; NSOIC8	
20	PCB	-	1	MAX22191	MAXIM	PCB	PCB:MAX22191	
21	R9, R10	DNP	0	CRCW06031K50FK	VISHAY DALE	1.5K	RESISTOR; 0603; 1.5K; 1%; 100PPM; 0.10W; THICK FILM	
22	R16, R17	DNP	0	RC0402JR-070RL; CR0402-16W-000RJT	YAGEO PHYCOMP; VENKEL LTD.	0	RESISTOR; 0402; 0 OHM; 5%; JUMPER; 0.063W; THICK FILM	
NOTE: DNI--> DO NOT INSTALL(PACKOUT) ; DNP--> DO NOT PROCURE								
TOTAL							55	

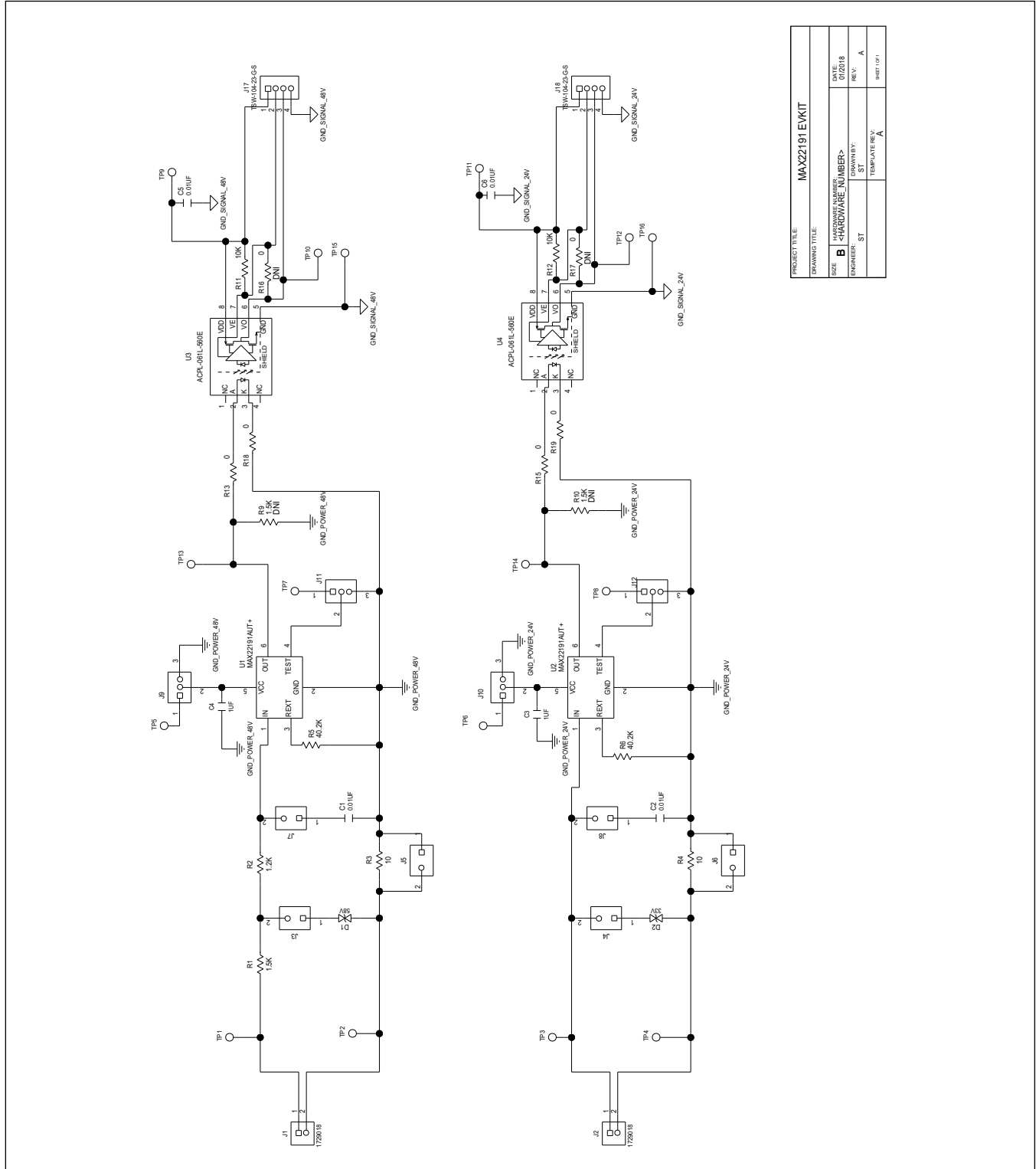
MAX22191 EV Kit PCB Layout Diagrams



MAX22191 EV Kit—Top Silkscreen



MAX22191 EV Kit Schematic



PROJECT TITLE	MAX22191 EVKIT		
DRAWING TITLE	MAX22191 EVKIT		
SIZE	B	HARDWARE NUMBER	DATE
ENGINEER	ST	DESIGNED BY	07/2018
		TEMPLATE REV.	REV. A
			SHEET 1 OF 1

### Ordering Information

PART	TYPE
MAX22191EVKIT#	EV Kit

#Denotes RoHS compliant.

### Revision History

REVISION NUMBER	REVISION DATE	DESCRIPTION	PAGES CHANGED
0	3/18	Initial release	—

For information on other Maxim Integrated products, visit Maxim Integrated's website at [www.maximintegrated.com](http://www.maximintegrated.com).

*Maxim Integrated cannot assume responsibility for use of any circuitry other than circuitry entirely embodied in a Maxim Integrated product. No circuit patent licenses are implied. Maxim Integrated reserves the right to change the circuitry and specifications without notice at any time.*





Компания «ЭлектроПласт» предлагает заключение долгосрочных отношений при поставках импортных электронных компонентов на взаимовыгодных условиях!

Наши преимущества:

- Оперативные поставки широкого спектра электронных компонентов отечественного и импортного производства напрямую от производителей и с крупнейших мировых складов;
- Поставка более 17-ти миллионов наименований электронных компонентов;
- Поставка сложных, дефицитных, либо снятых с производства позиций;
- Оперативные сроки поставки под заказ (от 5 рабочих дней);
- Экспресс доставка в любую точку России;
- Техническая поддержка проекта, помощь в подборе аналогов, поставка прототипов;
- Система менеджмента качества сертифицирована по Международному стандарту ISO 9001;
- Лицензия ФСБ на осуществление работ с использованием сведений, составляющих государственную тайну;
- Поставка специализированных компонентов (Xilinx, Altera, Analog Devices, Intersil, Interpoint, Microsemi, Aeroflex, Peregrine, Syfer, Eurofarad, Texas Instrument, Miteq, Cobham, E2V, MA-COM, Hittite, Mini-Circuits, General Dynamics и др.);

Помимо этого, одним из направлений компании «ЭлектроПласт» является направление «Источники питания». Мы предлагаем Вам помощь Конструкторского отдела:

- Подбор оптимального решения, техническое обоснование при выборе компонента;
- Подбор аналогов;
- Консультации по применению компонента;
- Поставка образцов и прототипов;
- Техническая поддержка проекта;
- Защита от снятия компонента с производства.



#### Как с нами связаться

**Телефон:** 8 (812) 309 58 32 (многоканальный)

**Факс:** 8 (812) 320-02-42

**Электронная почта:** [org@eplast1.ru](mailto:org@eplast1.ru)

**Адрес:** 198099, г. Санкт-Петербург, ул. Калинина, дом 2, корпус 4, литера А.