

## RONDA-WW

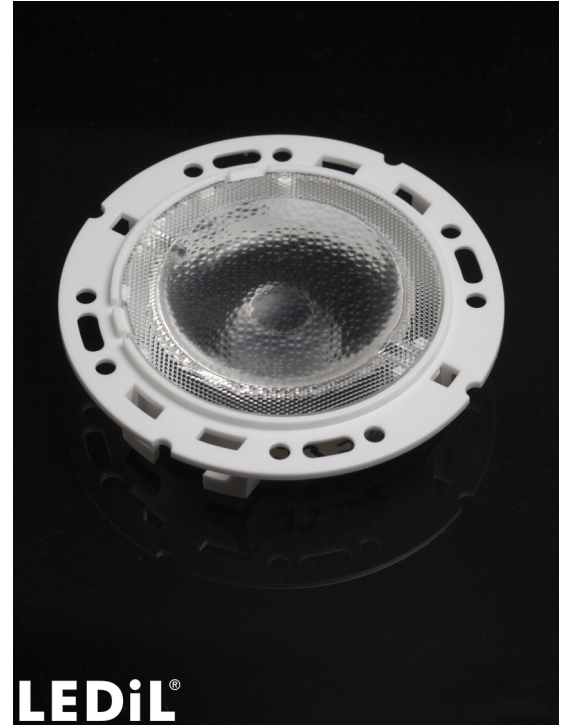
~60° wide beam with holder A compatible with 3rd party connectors from TE, Bender+Wirth and IDEAL

### TECHNICAL SPECIFICATIONS:

Dimensions	Ø 69.9 mm
Height	14.6 mm
Fastening	socket
ROHS compliant	yes ⓘ

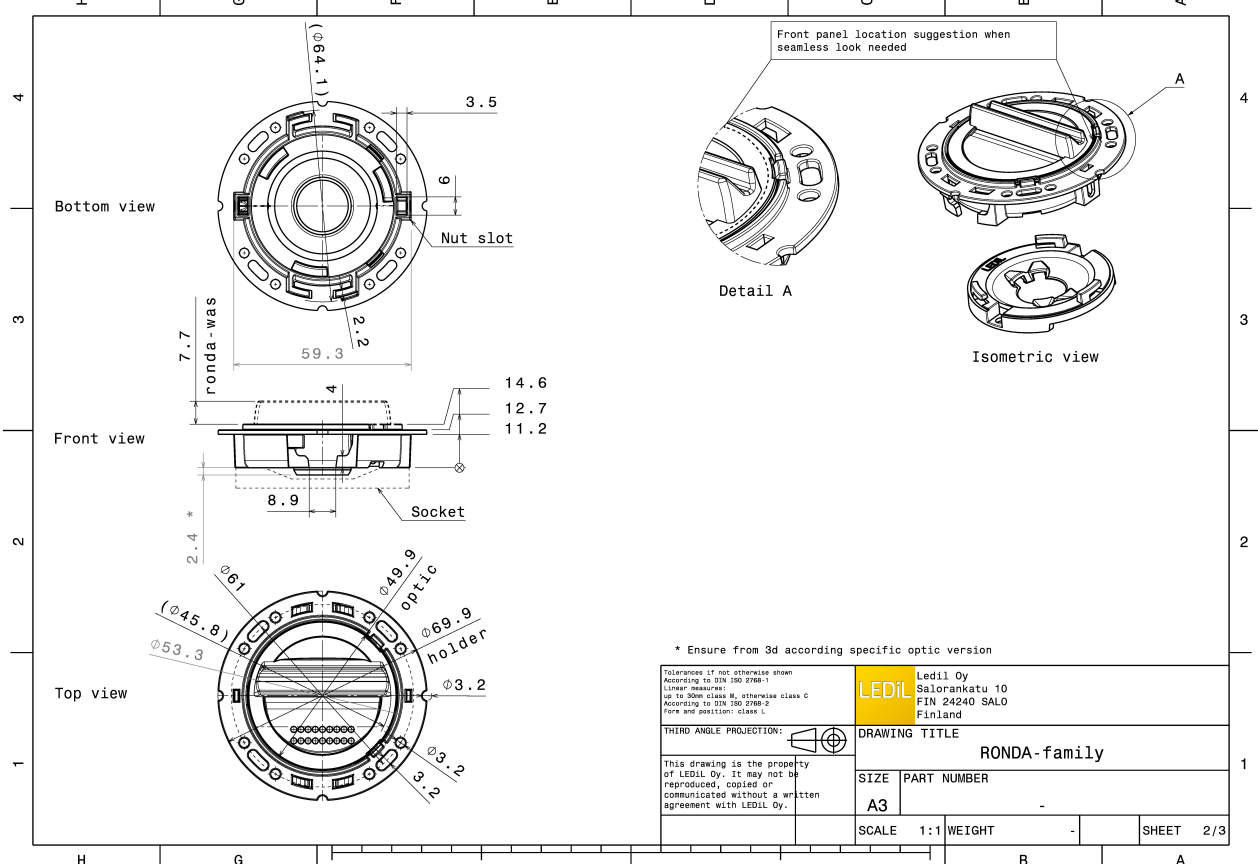
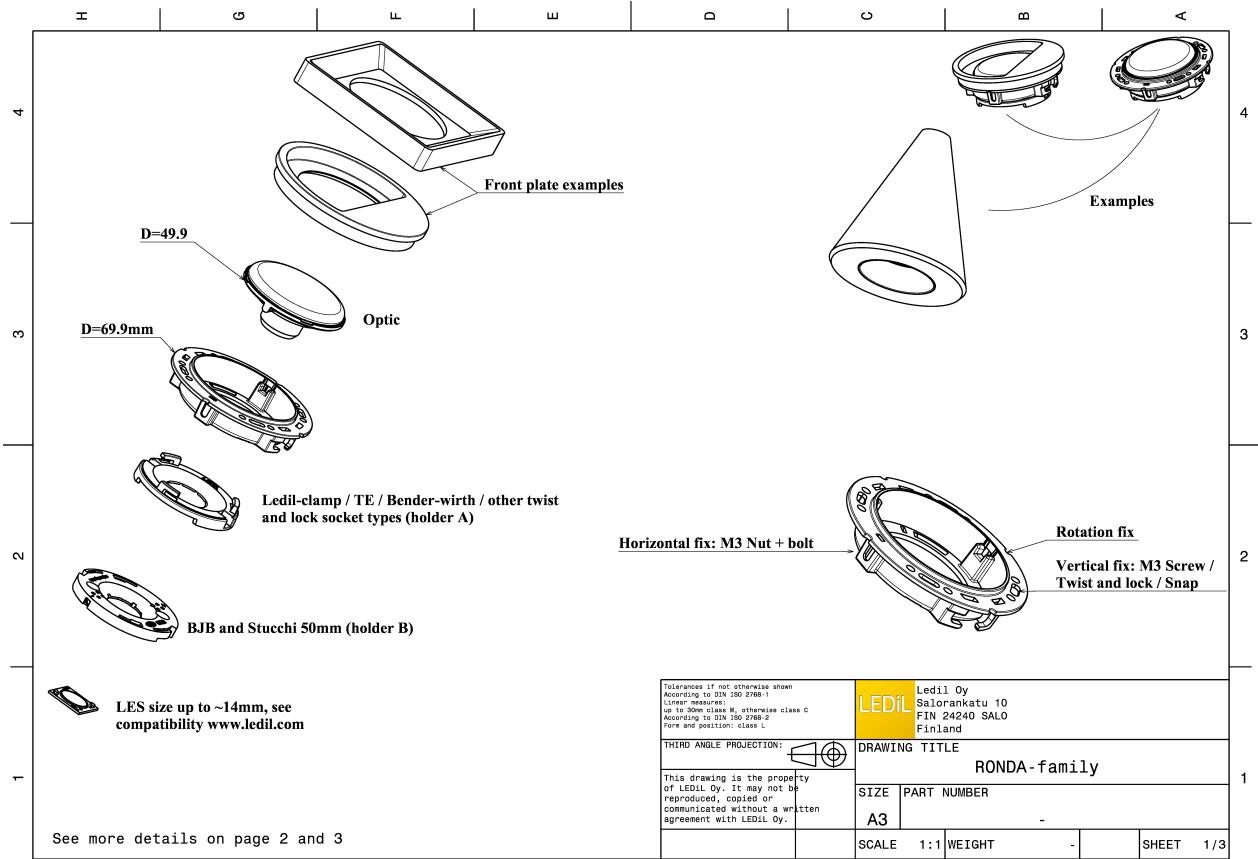
### MATERIAL SPECIFICATIONS:

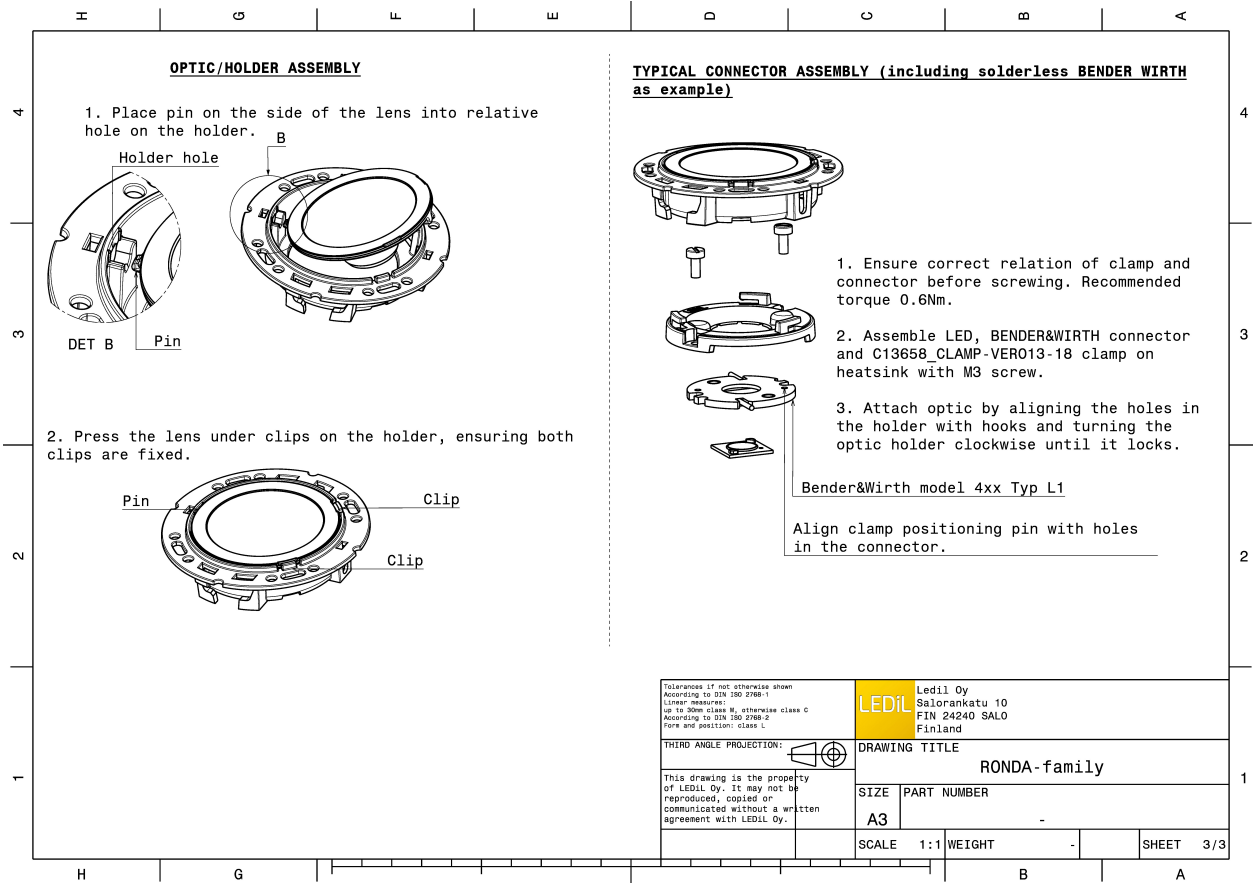
Component	Type	Material	Colour	Finish
RONDA-WW	Single lens	PMMA	clear	
RONDA-HLD-A	Holder	PC	white	




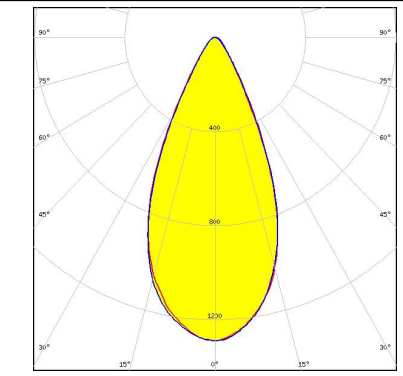

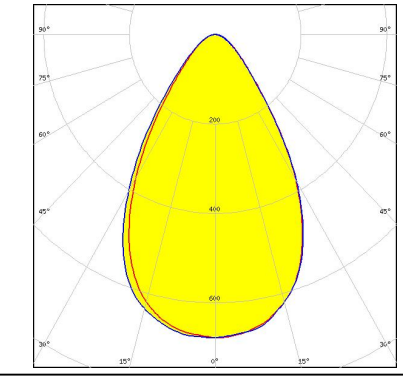
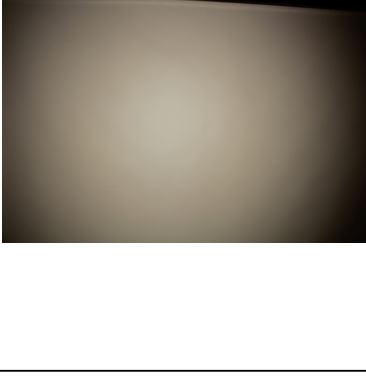
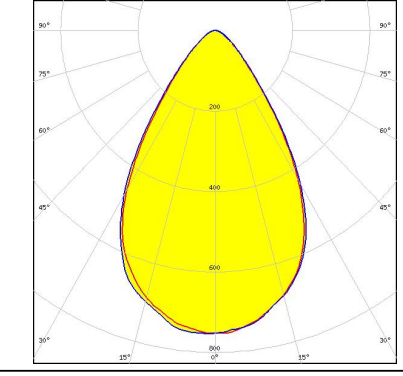

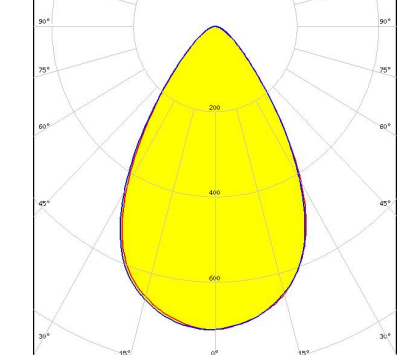
### ORDERING INFORMATION:

Component		Qty in box	MOQ	MPQ	Box weight (kg)
FN15387_RONDA-WW	Single lens	420	120	30	0.0
» Box size:					





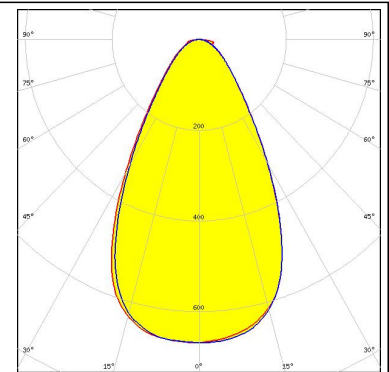
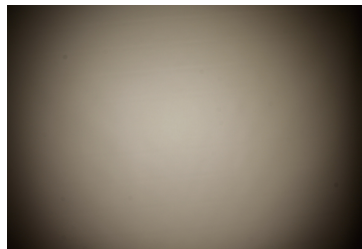
#### PHOTOMETRIC DATA (MEASURED):

<p>bridgelux.</p> <p>LED V10 Gen7            FWHM 47.0°            Efficiency %            LEDs/each optic 1            Light colour White            Required components:            C13658_CLAMP-VERO13-18            Bender Wirth: 486 Typ L1</p>		
<p>bridgelux.</p> <p>LED V13 Gen7            FWHM 64.0°            Efficiency 82 %            Peak intensity 0.7 cd/lm            LEDs/each optic 1            Light colour White            Required components:            TE: 2213254-2 + OPTIC CLIP Z50 TYPE1 2213194-1</p>		
<p>bridgelux.</p> <p>LED Vero SE 13            FWHM 65.0°            Efficiency 90 %            Peak intensity 0.8 cd/lm            LEDs/each optic 1            Light colour White            Required components:            C16402_CLAMP-VEROSE-13-18</p>		
<p>bridgelux.</p> <p>LED VERO13            FWHM 66.0°            Efficiency 88 %            Peak intensity 0.7 cd/lm            LEDs/each optic 1            Light colour White            Required components:            C13658_CLAMP-VERO13-18</p>		

### PHOTOMETRIC DATA (MEASURED):

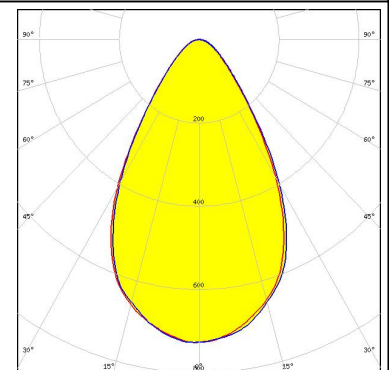
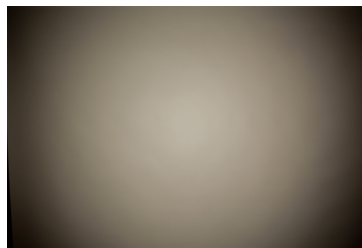
#### CITIZEN

LED CLL03x/CLU03x  
 FWHM 59.0°  
 Efficiency 81 %  
 Peak intensity 0.7 cd/lm  
 LEDs/each optic 1  
 Light colour White  
 Required components:  
 IDEAL: 50-2103CT + 50-2100AN



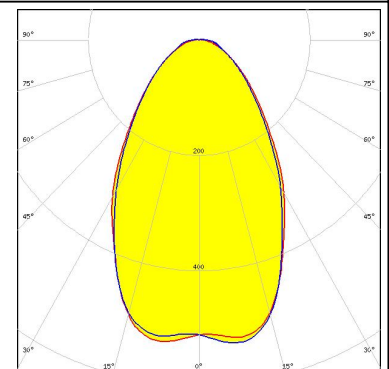
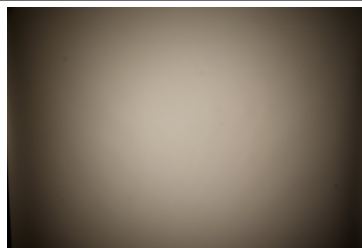
#### CITIZEN

LED CLL03x/CLU03x  
 FWHM 63.0°  
 Efficiency 87 %  
 Peak intensity 0.7 cd/lm  
 LEDs/each optic 1  
 Light colour White  
 Required components:  
 C16791\_CLAMP-Z45-A  
 TE: 2325807-3



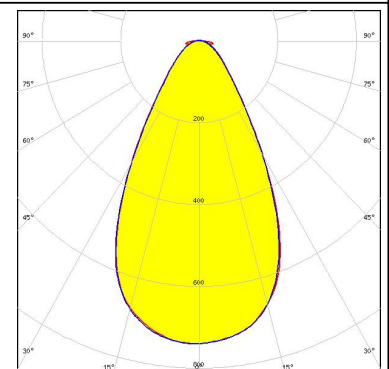
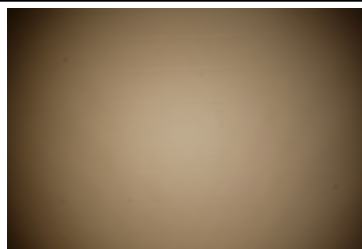
#### CITIZEN

LED CLL04x/CLU04x  
 FWHM 66.0°  
 Efficiency 81 %  
 Peak intensity 0.5 cd/lm  
 LEDs/each optic 1  
 Light colour White  
 Required components:  
 IDEAL: 50-2204-CT + 50-2100AN



#### CITIZEN

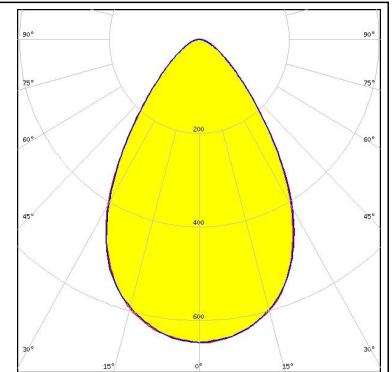
LED CLU730/731  
 FWHM 58.0°  
 Efficiency 83 %  
 Peak intensity 0.7 cd/lm  
 LEDs/each optic 1  
 Light colour White  
 Required components:  
 IDEAL: 50-2204-CT + 50-2100AN



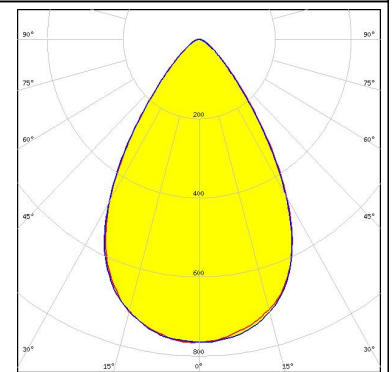
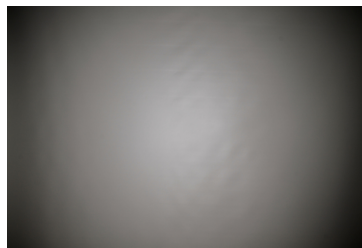
#### PHOTOMETRIC DATA (MEASURED):



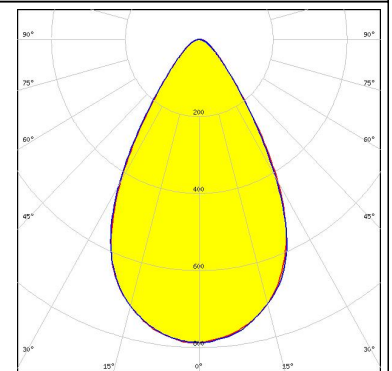
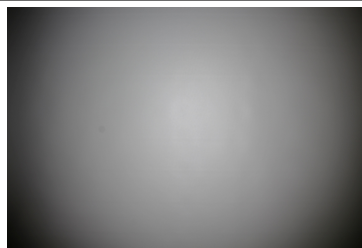
LED CMA1840  
 FWHM 69.0°  
 Efficiency 89 %  
 Peak intensity 0.7 cd/lm  
 LEDs/each optic 1  
 Light colour White  
 Required components:  
 C14123\_CLAMP-CXA15-18



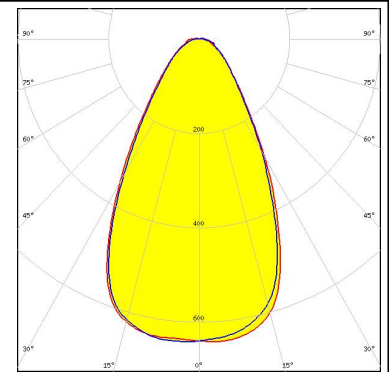
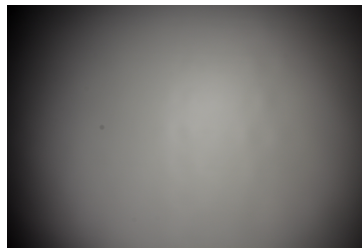
LED CXA/B 1816 & CXA/B 1820 & CXA 1850  
 FWHM 66.0°  
 Efficiency 93 %  
 Peak intensity 0.8 cd/lm  
 LEDs/each optic 1  
 Light colour White  
 Required components:  
 C14123\_CLAMP-CXA15-18



LED CXA/B 1816 & CXA/B 1820 & CXA 1850  
 FWHM 62.0°  
 Efficiency 88 %  
 Peak intensity 0.8 cd/lm  
 LEDs/each optic 1  
 Light colour White  
 Required components:  
 TE: 2213401-2 + OPTIC CLIP Z50 TYPE1 2213194-1



LED COB J-Type  
 FWHM 60.0°  
 Efficiency 81 %  
 Peak intensity 0.6 cd/lm  
 LEDs/each optic 1  
 Light colour White  
 Required components:  
 IDEAL: 50-2103NC + 50-2100AN

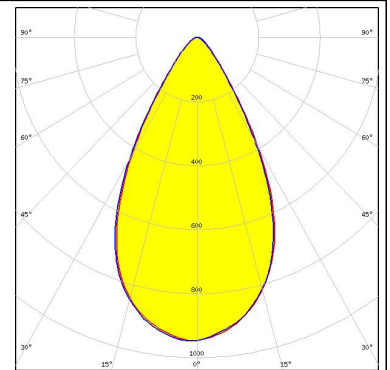
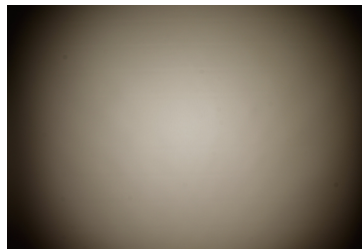


#### PHOTOMETRIC DATA (MEASURED):



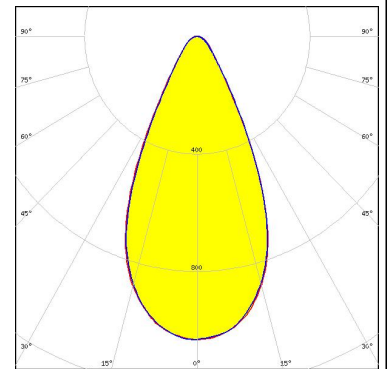
LED COB L-Type (LES 11)  
 FWHM 57.0°  
 Efficiency 88 %  
 Peak intensity 1 cd/lm  
 LEDs/each optic 1  
 Light colour White

Required components:  
 TE: 2213382-2 + OPTIC CLIP Z50 TYPE1 2213194-1



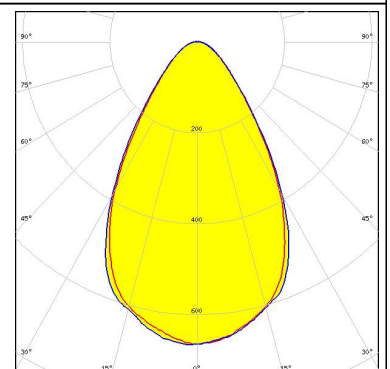
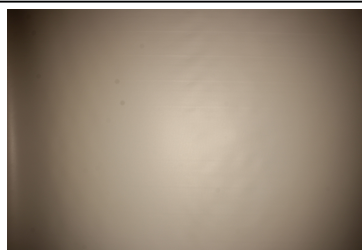
LED COB L-Type (LES 11)  
 FWHM 50.0°  
 Efficiency 85 %  
 Peak intensity 1 cd/lm  
 LEDs/each optic 1  
 Light colour White

Required components:  
 IDEAL: 50-2100NC + 50-2100AN



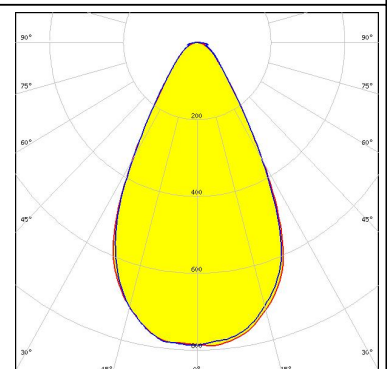
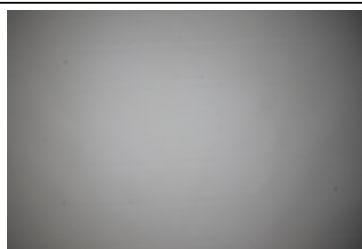
LED PrevaLED Core G7 L15 H1  
 FWHM 65.0°  
 Efficiency 86 %  
 Peak intensity 0.7 cd/lm  
 LEDs/each optic 1  
 Light colour White

Required components:  
 C16685\_CLAMP-PRV-A



LED Soleriq S13 19x19  
 FWHM 58.0°  
 Efficiency 85 %  
 Peak intensity 0.8 cd/lm  
 LEDs/each optic 1  
 Light colour White

Required components:  
 IDEAL: 50-2103CT + 50-2100AN



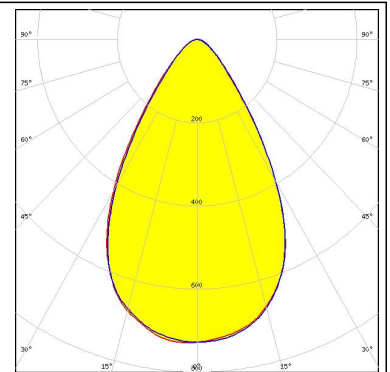
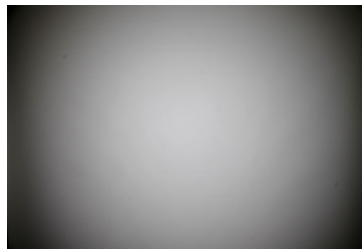
#### PHOTOMETRIC DATA (MEASURED):

**OSRAM**  
Opto Semiconductors

LED Soleriq S13 19x19  
FWHM 63.0°  
Efficiency 84 %  
Peak intensity 0.7 cd/lm  
LEDs/each optic 1  
Light colour White

Required components:

TE: 2213254-2 + OPTIC CLIP Z50 TYPE1 2213194-1

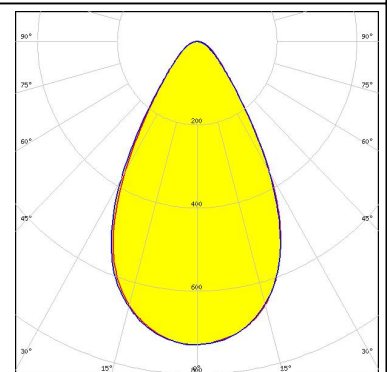
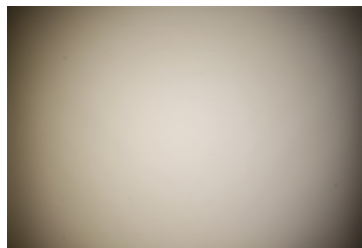


**PHILIPS**

LED Fortimo SLM L13 + SLM holder  
FWHM 61.0°  
Efficiency 82 %  
Peak intensity 0.7 cd/lm  
LEDs/each optic 1  
Light colour White

Required components:

TE: OPTIC CLIP Z50 TYPE1 2213194-1

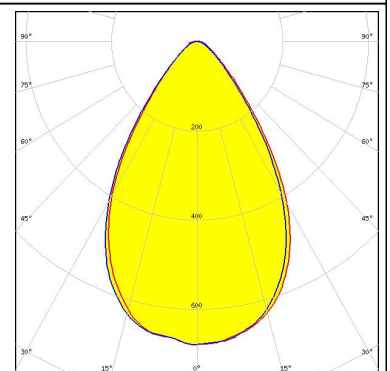


**PHILIPS**

LED Fortimo SLM L13 CoB  
FWHM 66.0 + °  
Efficiency 85 %  
Peak intensity 0.7 cd/lm  
LEDs/each optic 1  
Light colour White

Required components:

TE: 2213130-2 + OPTIC CLIP Z50 TYPE1 2213194-1

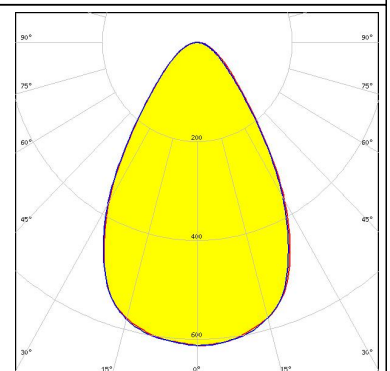
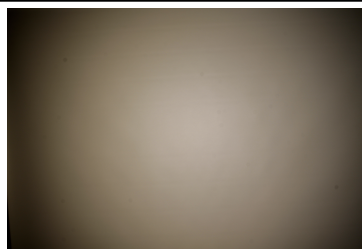


**PHILIPS**

LED Fortimo SLM L15 + SLM holder  
FWHM 66.0°  
Efficiency 83 %  
Peak intensity 0.6 cd/lm  
LEDs/each optic 1  
Light colour White

Required components:

TE: OPTIC CLIP Z50 TYPE1 2213194-1



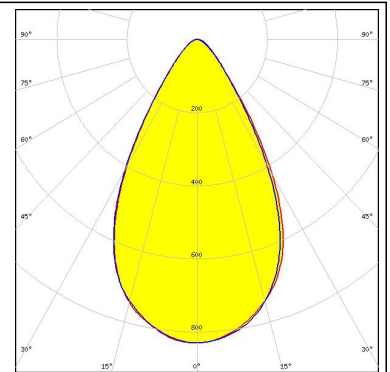


#### PHOTOMETRIC DATA (MEASURED):

### SAMSUNG

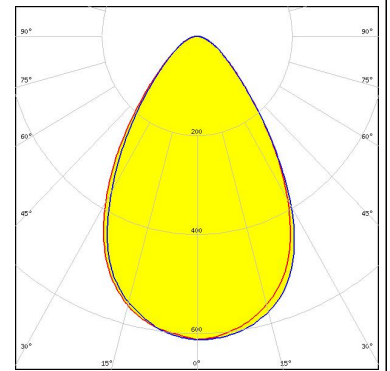
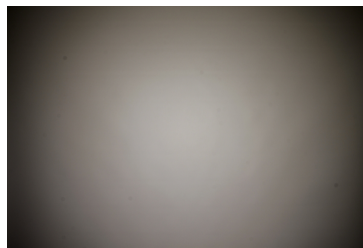
LED LC040C  
 FWHM 60.0°  
 Efficiency 86 %  
 Peak intensity 0.8 cd/lm  
 LEDs/each optic 1  
 Light colour White

Required components:  
 TE: 2213382-2 + OPTIC CLIP Z50 TYPE1 2213194-1



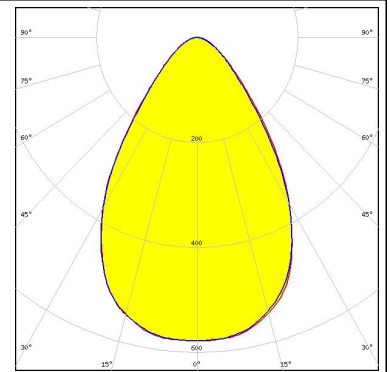
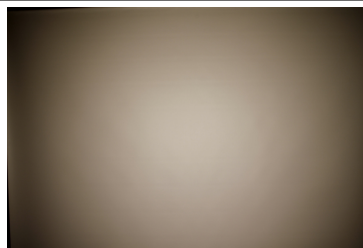
LED AC Zhaga COB  
 FWHM 67.0°  
 Efficiency 84 %  
 Peak intensity 0.6 cd/lm  
 LEDs/each optic 1  
 Light colour White

Required components:  
 Optosource: SEHSMJD-A



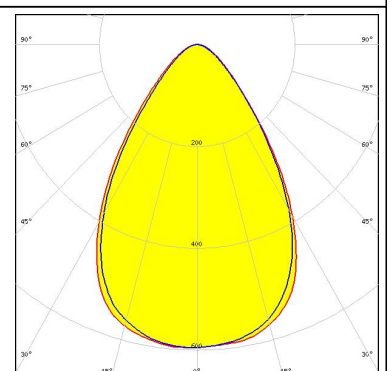
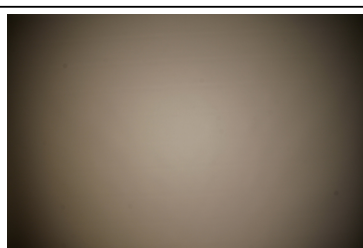
LED MJT COB LES 14.5  
 FWHM 69.0°  
 Efficiency 80 %  
 Peak intensity 0.6 cd/lm  
 LEDs/each optic 1  
 Light colour White

Required components:  
 TE: 2213254-2 + OPTIC CLIP Z50 TYPE1 2213194-1

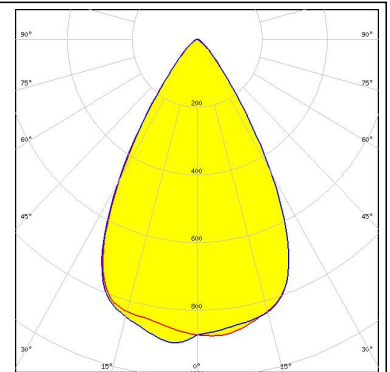
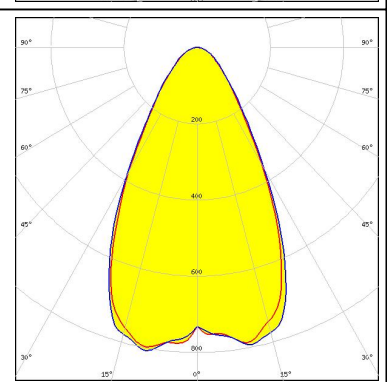
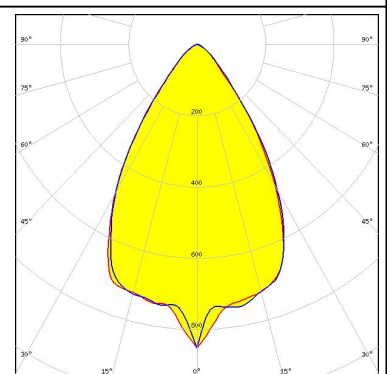


LED WU-M-484  
 FWHM 69.0°  
 Efficiency 83 %  
 Peak intensity 0.6 cd/lm  
 LEDs/each optic 1  
 Light colour White

Required components:  
 TE: OPTIC CLIP Z50 TYPE1 2213194-1



#### PHOTOMETRIC DATA (SIMULATED):

<p>bridgelux.</p> <p>LED V10 Gen6            FWHM 60.0°            Efficiency 88 %            LEDs/each optic 1            Light colour White            Required components:            C14123_CLAMP-CXA15-18</p>	
<p>bridgelux.</p> <p>LED V13 Gen7            FWHM 59.0°            Efficiency 89 %            Peak intensity 0.8 cd/lm            LEDs/each optic 1            Light colour White            Required components:            IDEAL: 50-2103CT + 50-2100AN</p>	
<p>bridgelux.</p> <p>LED V13 Gen7            FWHM 60.0°            Efficiency 88 %            Peak intensity 0.9 cd/lm            LEDs/each optic 1            Light colour White            Required components:            C13658_CLAMP-VERO13-18            Bender Wirth: 477 Typ L1</p>	

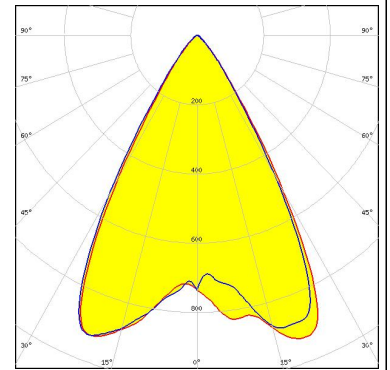
## CITIZEN

LED	CLL02x/CLU02x (LES10)
FWHM	60.0°
Efficiency	88 %
LEDs/each optic	1
Light colour	White
Required components:	C13658_CLAMP-VERO13-18 Bender Wirth: 434 Typ L1

### PHOTOMETRIC DATA (SIMULATED):

#### CITIZEN

LED CLU700/701/702  
FWHM 60.0°  
Efficiency 89 %  
LEDs/each optic 1  
Light colour White  
Required components:  
C13658\_CLAMP-VERO13-18  
Bender Wirth: 434 Typ L1

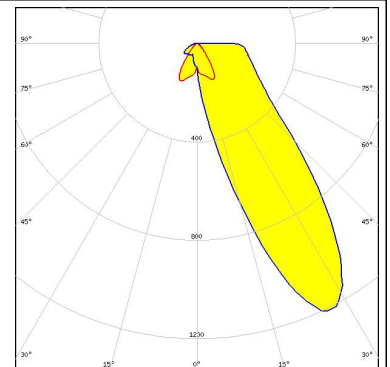


#### CITIZEN

LED CLU710/711  
FWHM 60.0°  
Efficiency 88 %  
LEDs/each optic 1  
Light colour White  
Required components:  
C13658\_CLAMP-VERO13-18  
Bender Wirth: 470 Typ L1

#### CREE

LED CXA/B 13xx  
FWHM 62.0°  
Efficiency 89 %  
LEDs/each optic 1  
Light colour White  
Required components:  
C13658\_CLAMP-VERO13-18  
Bender Wirth: 448 Typ L1



#### CREE

LED CXA/B 15xx  
FWHM 62.0°  
Efficiency 89 %  
LEDs/each optic 1  
Light colour White  
Required components:  
C13658\_CLAMP-VERO13-18  
Bender Wirth: 441 Typ L1

## PHOTOMETRIC DATA (SIMULATED):

### CREE

LED CXA/B 15xx  
FWHM 62.0°  
Efficiency 89 %  
LEDs/each optic 1  
Light colour White  
Required components:  
C14123\_CLAMP-CXA15-18

### CREE

LED CXA/B 1816 & CXA/B 1820 & CXA 1850  
FWHM 63.0°  
Efficiency 89 %  
LEDs/each optic 1  
Light colour White  
Required components:  
C14123\_CLAMP-CXA15-18

### CREE

LED CXA/B 1816 & CXA/B 1820 & CXA 1850  
FWHM 57.0°  
Efficiency 85 %  
LEDs/each optic 1  
Light colour White  
Required components:  
TE: 2213401-2 + OPTIC CLIP Z50 TYPE1 2213194-1

### CREE

LED CXA/B 1816 & CXA/B 1820 & CXA 1850  
FWHM 63.0°  
Efficiency 89 %  
LEDs/each optic 1  
Light colour White  
Required components:  
C13658\_CLAMP-VERO13-18  
Bender Wirth: 437 Typ L1

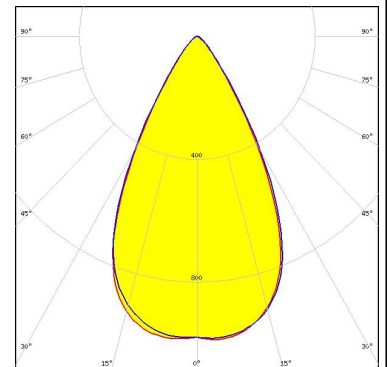
#### PHOTOMETRIC DATA (SIMULATED):



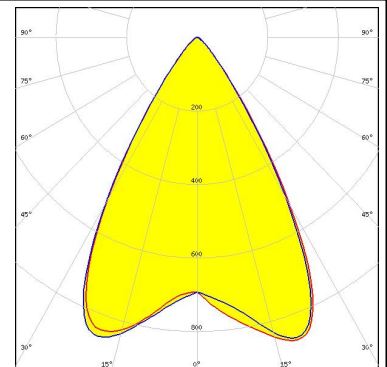
**LED** CXA/B 1830  
**FWHM** 62.0°  
**Efficiency** 87 %  
**LEDs/each optic** 1  
**Light colour** White  
**Required components:**  
 C14123\_CLAMP-CXA15-18



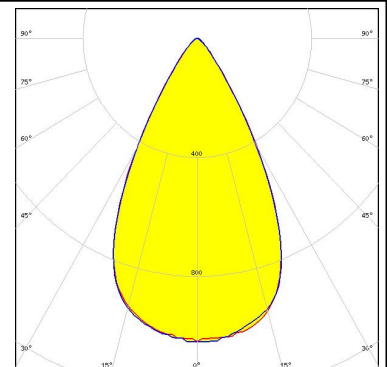
**LED** LUXEON CoB 1202/1203  
**FWHM** 56.0°  
**Efficiency** 87 %  
**Peak intensity** 1 cd/lm  
**LEDs/each optic** 1  
**Light colour** White  
**Required components:**  
 TE: 2213382-2 + OPTIC CLIP Z50 TYPE1 2213194-1



**LED** LUXEON CoB 1202s  
**FWHM** 60.0°  
**Efficiency** 89 %  
**LEDs/each optic** 1  
**Light colour** White  
**Required components:**  
 C13658\_CLAMP-VERO13-18  
 Bender Wirth: 452 Typ L1



**LED** COB L-Type (LES 9)  
**FWHM** 56.0°  
**Efficiency** 87 %  
**Peak intensity** 1 cd/lm  
**LEDs/each optic** 1  
**Light colour** White  
**Required components:**  
 TE: 2213382-2 + OPTIC CLIP Z50 TYPE1 2213194-1



#### PHOTOMETRIC DATA (SIMULATED):



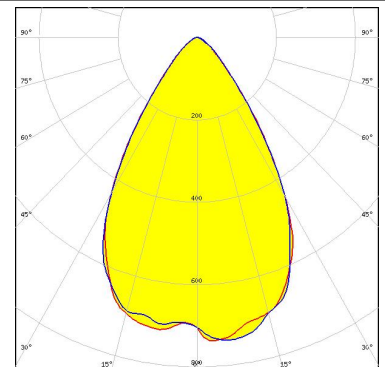
LED NSCxL036A  
FWHM 56.0°  
Efficiency 88 %  
Peak intensity 1 cd/lm  
LEDs/each optic 1  
Light colour White  
Required components:  
TE: 2213382-2 + OPTIC CLIP Z50 TYPE1 2213194-1



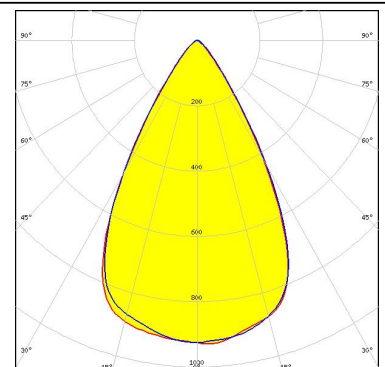
LED Duris S10  
FWHM 66.0°  
Efficiency 89 %  
LEDs/each optic 1  
Light colour White  
Required components:  
C13658\_CLAMP-VERO13-18



LED Soleriq S13  
FWHM 63.0°  
Efficiency 84 %  
LEDs/each optic 1  
Light colour White  
Required components:  
C14123\_CLAMP-CXA15-18



LED Mini Zenigata (GW6BM)  
FWHM 62.0°  
Efficiency 88 %  
LEDs/each optic 1  
Light colour White  
Required components:  
C13658\_CLAMP-VERO13-18  
Bender Wirth: 452 Typ L1



### GENERAL INFORMATION:

NOTE: The typical beam angle will be changed by different color, chip size and chip position tolerance. The typical total beam angle is the full angle measured where the luminous intensity is half of the peak value.

Due to use of high power COB's with this product, special attention to proper thermal design is highly recommended. LEDiL has no liability for direct, indirect or consecutive damages arising from the LEDiL products being used outside of the recommended temperature range.

### MATERIALS:

As part of our continuous research and improvement processes, and to ensure the best possible quality and availability of our products, LEDiL reserves the right to change material grades without notice.

### PRODUCT DATA USER AGREEMENT AND DISCLAIMER:

The measured data in the provided downloadable LEDiL Product Datasheets and Mechanical 2D-Drawings is rounded and provided as reference for planning. LEDiL Oy's optical specifications have been verified by conducting performance testing of the products in accordance with the company's quality system. The reported data are averaged results of multiple measurements with typical variation. LEDiL Oy reserves the right to without prior notification make changes and improvements to its products.

LEDiL Oy assumes neither warranty, nor guarantee nor any other liability of any kind for the contents and correctness of the provided data. The provided data has been generated with highest diligence but the provided data may in reality not represent the complete possible variation range of all intrinsic parameters. Therefore, in certain cases a deviation from the provided data could occur.

LEDiL Oy reserves the right to undertake technical changes of its products without further notification which could lead to changes in the provided data. LEDiL Oy assumes no liability of any kind for the possible deviation from any provided data or any other damage resulting from the usage of the provided data.

The user agrees to this disclaimer and user agreement with the download or usage of the provided files.

#### LEDiL Oy

Joensuunkatu 13  
FI-24240 SALO  
Finland

#### LEDiL Inc.

228 West Page Street  
Suite D  
Sycamore IL 60178  
USA

#### Local sales and technical support

[www.ledil.com/where\\_to\\_buy](http://www.ledil.com/where_to_buy)

#### Shipping locations

Salo, Finland  
Hong Kong, China

#### Distribution Partners

[www.ledil.com/where\\_to\\_buy](http://www.ledil.com/where_to_buy)



Компания «ЭлектроПласт» предлагает заключение долгосрочных отношений при поставках импортных электронных компонентов на взаимовыгодных условиях!

Наши преимущества:

- Оперативные поставки широкого спектра электронных компонентов отечественного и импортного производства напрямую от производителей и с крупнейших мировых складов;
- Поставка более 17-ти миллионов наименований электронных компонентов;
- Поставка сложных, дефицитных, либо снятых с производства позиций;
- Оперативные сроки поставки под заказ (от 5 рабочих дней);
- Экспресс доставка в любую точку России;
- Техническая поддержка проекта, помощь в подборе аналогов, поставка прототипов;
- Система менеджмента качества сертифицирована по Международному стандарту ISO 9001;
- Лицензия ФСБ на осуществление работ с использованием сведений, составляющих государственную тайну;
- Поставка специализированных компонентов (Xilinx, Altera, Analog Devices, Intersil, Interpoint, Microsemi, Aeroflex, Peregrine, Syfer, Eurofarad, Texas Instrument, Miteq, Cobham, E2V, MA-COM, Hittite, Mini-Circuits, General Dynamics и др.);

Помимо этого, одним из направлений компании «ЭлектроПласт» является направление «Источники питания». Мы предлагаем Вам помощь Конструкторского отдела:

- Подбор оптимального решения, техническое обоснование при выборе компонента;
- Подбор аналогов;
- Консультации по применению компонента;
- Поставка образцов и прототипов;
- Техническая поддержка проекта;
- Защита от снятия компонента с производства.



#### Как с нами связаться

**Телефон:** 8 (812) 309 58 32 (многоканальный)

**Факс:** 8 (812) 320-02-42

**Электронная почта:** [org@eplast1.ru](mailto:org@eplast1.ru)

**Адрес:** 198099, г. Санкт-Петербург, ул. Калинина, дом 2, корпус 4, литера А.