

UShop EIS (Edge Intelligence Server)



Features

- Including UShop EIS service software
- Analytic functions included:
 - People Counting
 - Heatmap Analysis
 - Face Analysis
 - POS Monitor
- Support OnVIF-compliant IP Camera and Webcam Input
- Support UShop+ Store BI Cloud Service

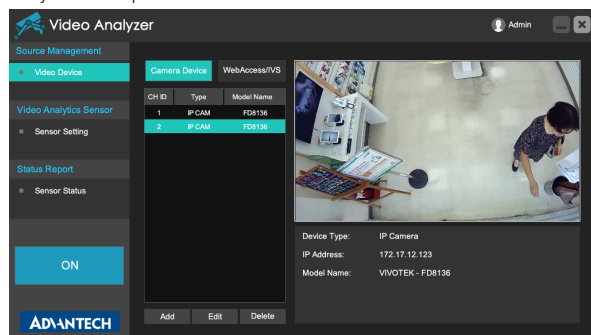
Introduction

UShop EIS is an intelligent sever system designed for future retail store management. It bundles UShop EIS Service software with multiple analysis functions so that you can understand real time store operation and business intelligence information, such as store traffic counting, in-store heatmap, customer demographics and POS transaction data. This information can be accessed by local database or SDK/API for customized application/service integration. Furthermore, UShop EIS Service is fully supported UShop+ Store BI service that provided more comprehensive intelligent retail solutions. And UShop EIS platform is industrial design that provides the best reliability for 24/7 operations for various retail environment.

Main Functions

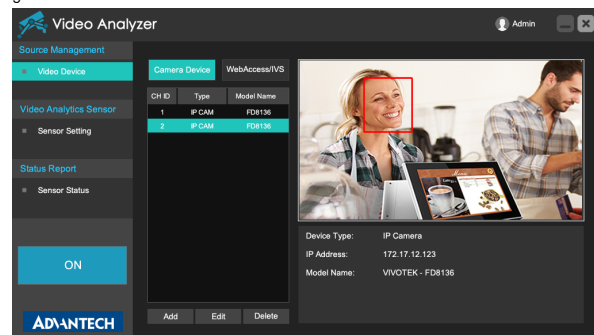
People Counter

Measure total number of visitors at different entrances simultaneously by video analysis of multiple cameras.



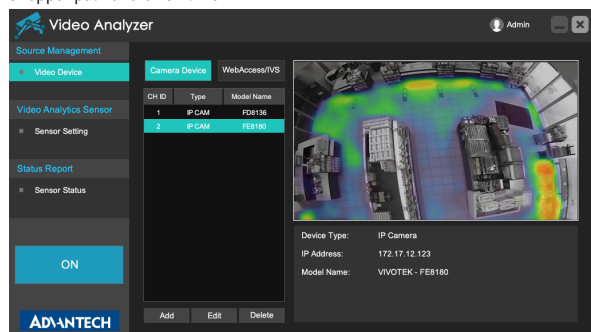
Face Analysis

Detect and analyze faces of customers at specific location to identify their age range, gender and focus.



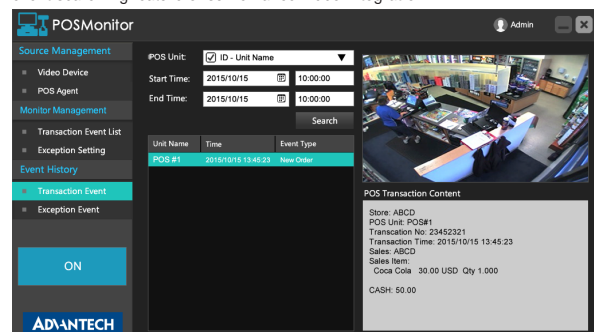
Heatmap Analysis

Analyze the shopping experience of customers at designated regions, including shopper path and dwell time.



POS Monitor




Convert POS transaction information to flexible data format for providing exception event searching feature of surveillance video integration.



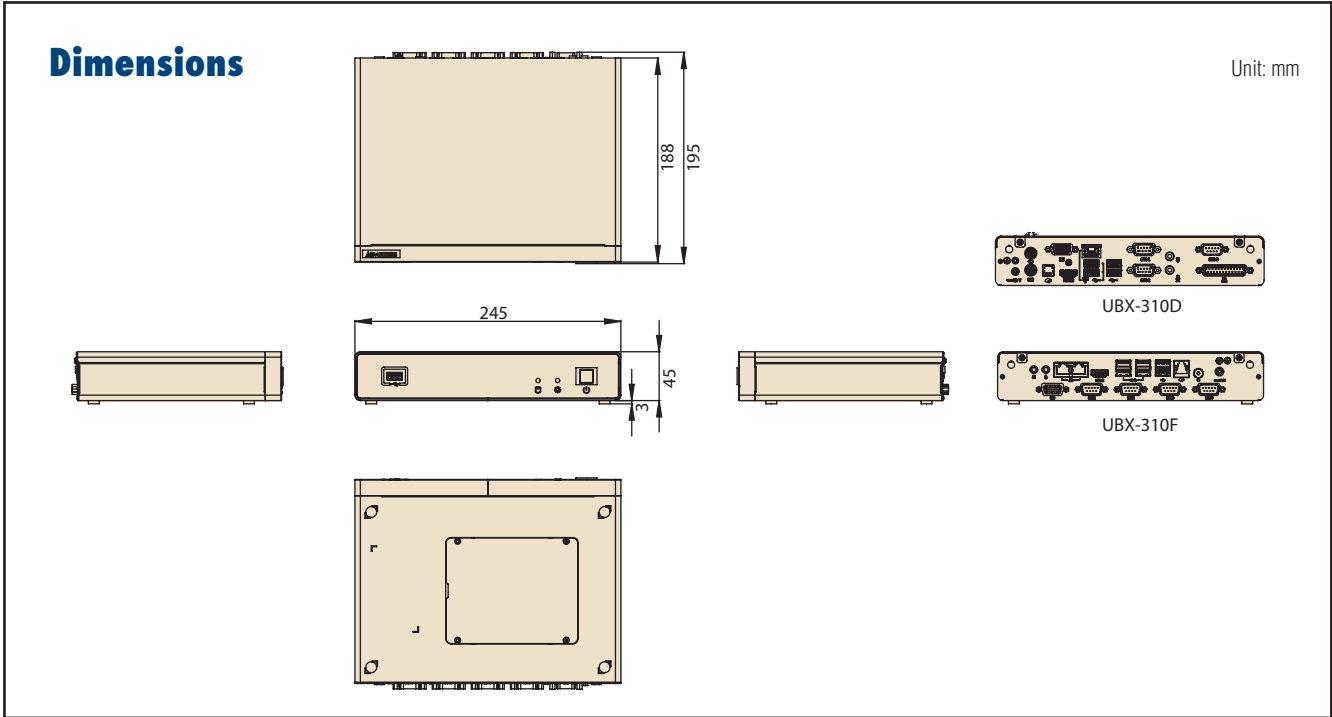
UShop EIS Software Specifications

General Functions	Camera Input	IP Camera (OnVIF), USB Webcam
	User Authority	Multi-level authority of user account management for different analytic functions
	Data Export Format	Chart report (PNG), Statistic report (CSV)
	Data Storage Statistic	Statistic counting data in SQL Database
	Data Integration	Windows SDK/API
	Schedule Management	Configurable starting/stopping time of analytic functions for different week days
	Remote Management	Remote setting through LAN with UShop EIS Manager application console
	Language	English, Traditional Chinese, Simplified Chinese
People Counting	Video Source Resolution	Maximum: 1920x1080, Minimum: D1
	Counting Data	Provide real-time counting raw data and statistic data
	Data Resolution	Minimum analytical period: 1 minute
	Counting Area	Support multiple counting lines in one camera
Face Analysis	Video Source Resolution	Maximum: 1920x1080, Minimum: D1
	Face Size	Minimum: 60x60 pixels
	Face Rotation	Maximum deviation of face rotation in any direction (yaw, pitch and roll): 15 degrees
	Analytical Data	Face counting, Face dwell time (in screen), Gender, Age
Heatmap Analysis	Video Source Resolution	Maximum: 1920x1080, Minimum: D1
	Data Resolution	Minimum analytical period: 10 minutes
	Analytical Data	Visit frequency, Dwell Time
	Result Data Format	Visualization Image (Heatmap graph), analysis database
POS Monitor	Supporting NVR	Advantech VideoCMS, Hikvision NVR
	POS Connection Type	Ethernet, Serial Ports
	Monitor Data	POS transaction data, POS operation message, video analytical event
	POS Data Storage	Maximum: 6 months (depends on POS transaction data format)

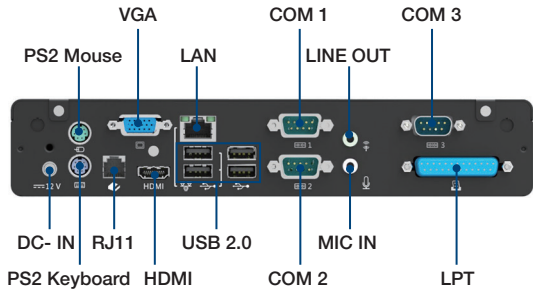
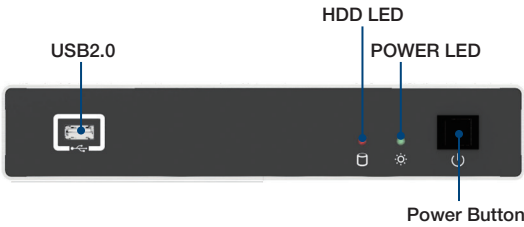
UShopEIS Hardware Platform Specification

	Lite	Standard	Professional
Part Number	UBX-310UST-G1E-C	AiMC-342UST-G1E-C	ACP-2320UST-G1E-C
			
Number of Process Units	6	16	32
Maximum Analyzing Channels	People Counting: 3 (2 PU per channel) Heatmap Analysis : 3 (2 PU per channel) Face Analysis: 1 (4 PU per channel) POS Monitor: 3 (2 PU per channel)	People Counting: 8 (2 PU per channel) Heatmap Analysis: 8 (2 PU per channel) Face Analysis: 4 (4 PU per channel) POS Monitor: 8 (2 PU per channel)	People Counting: 16 (2 PU per channel) Heatmap Analysis: 16 (2 PU per channel) Face Analysis: 8 (4 PU per channel) POS Monitor: 16 (2 PU per channel)
CPU	Intel® Celeron® J1900, 2.4 GHz	Intel® Core™ i5-3550S, 3.0 GHz	Intel® Core™ i7-4790S, 3.2 GHz
RAM	8 GB DDR3L, 1333 MHz	16 GB DDR3L, 1333 MHz	16 GB DDR3L, 1333 MHz
Graphics	Intel® HD Graphics, HDMI/VGA	Intel® HD Graphics, VGA	Intel® HD Graphics, VGA/DVI
Storage	1 x SATA 2.5" HDD (500 GB)	1 x SATA 3.5" HDD (1 TB)	1 x SATA 3.5" HDD (1 TB)
Internet	1 x RJ45 (10/100/1000 Mbps)	2 x RJ45 (10/100/1000 Mbps)	2 x RJ45 (10/100/1000 Mbps)
I/O	5 x USB, 3 x COM, 1 x LPT	8 x USB, 2 x COM, 1 x PS/2	4 x USB, 1 x COM, 2 x PS/2
Power	60W (12V power adapter)	300W (Input 100 ~ 240VAc)	350W (100 ~ 240VAc)
Size	245 x 45 x 185 mm	150 x 222 x 270 mm	482 x 88 x 480 mm
Weight	2 kg	5 kg	11.7 KG
Operating System	Microsoft® Windows Embedded Standard 7		
Software	UShop EIS Service		
Environment Temperature	0 - 40° C (32 - 104° F)	0 - 40° C (32 - 104° F)	0 - 40° C (32 - 104° F)
Environment Humidity	90% at 40° C (non-condensing)	10-85% at 40° C (non-condensing)	10-85% at 40° C (non-condensing)

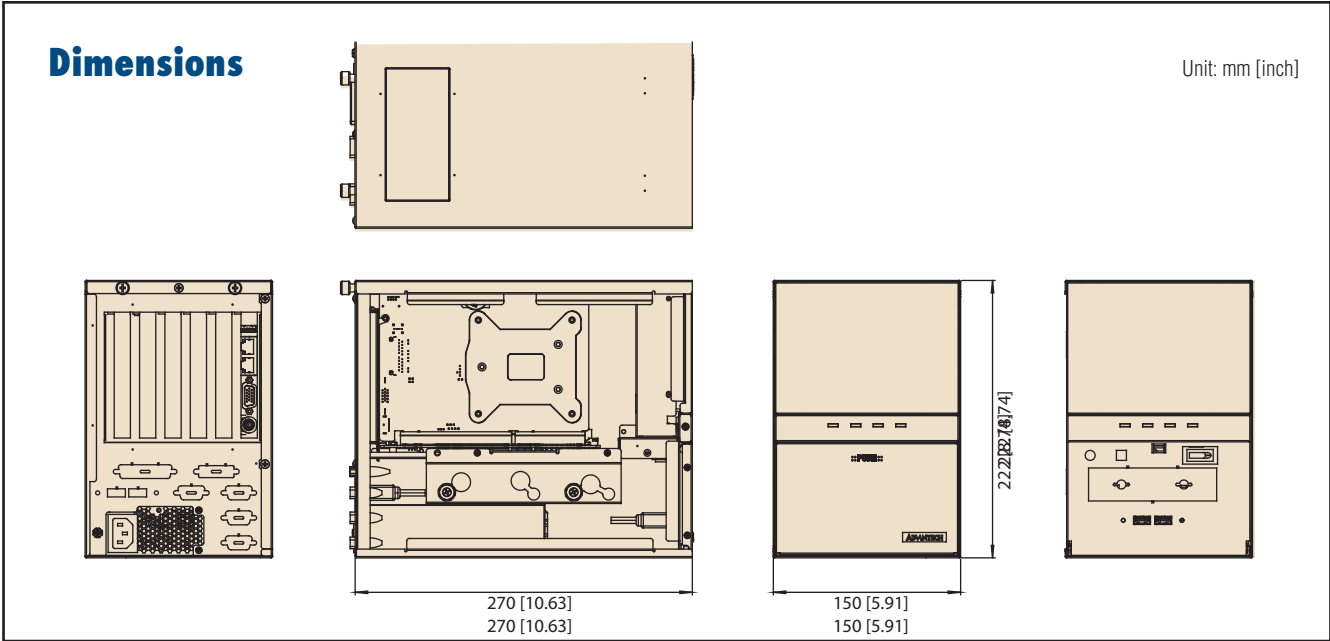
UShop EIS Lite - Dimension Specification



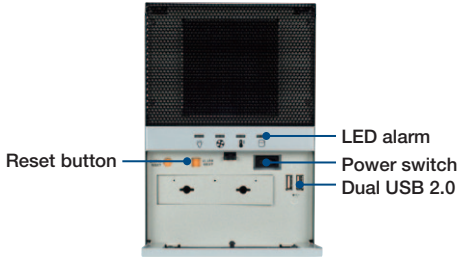
Integrated I/O



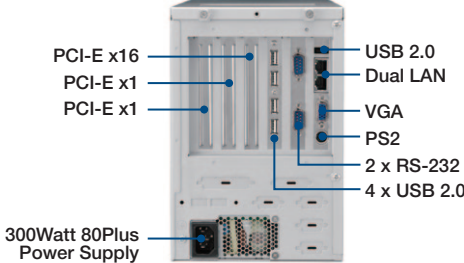
UShop EIS Standard - Dimension Specification



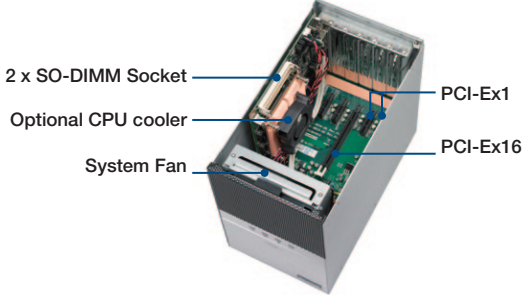
Front View



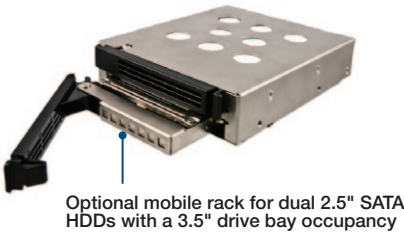
Rear View



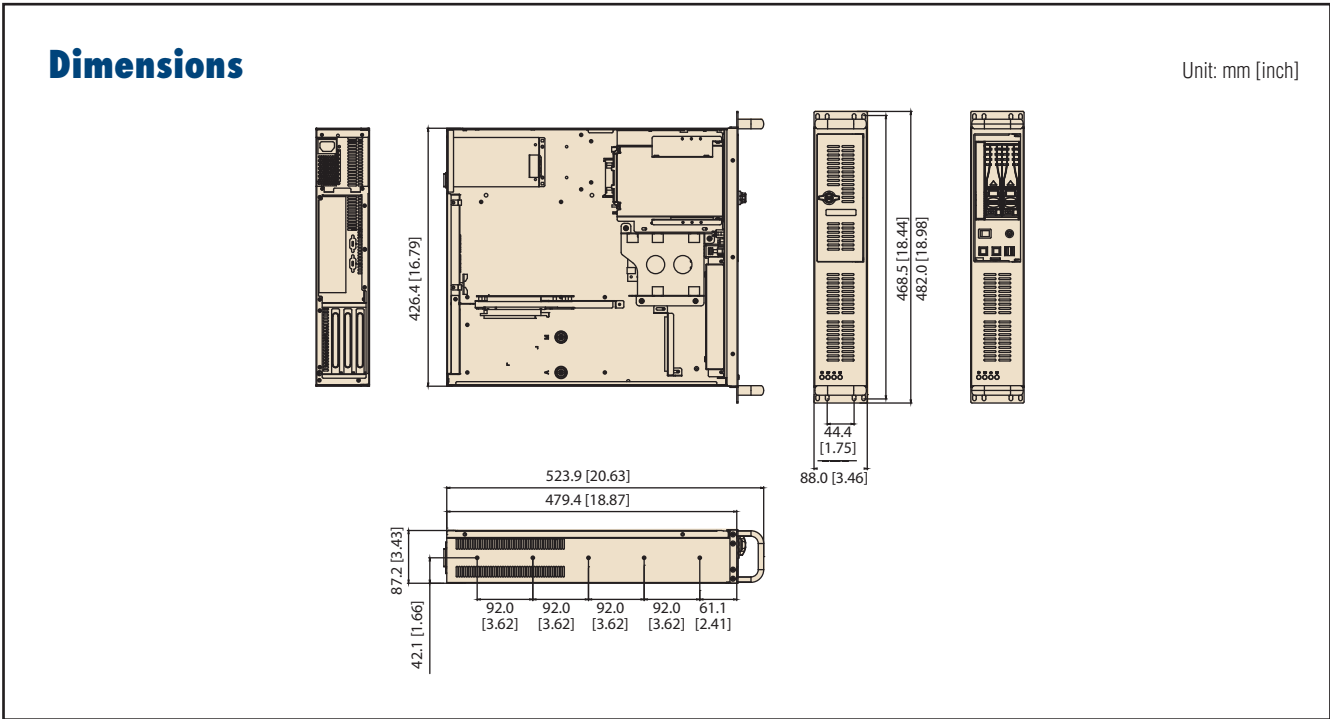
Interior View



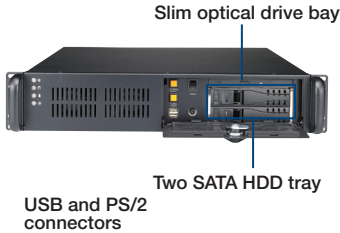
IDT-3120E



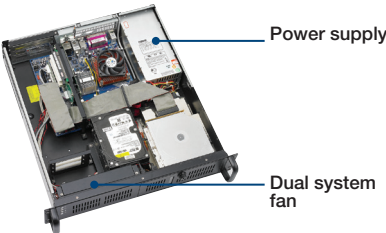
UShop EIS Professional - Dimension Specification



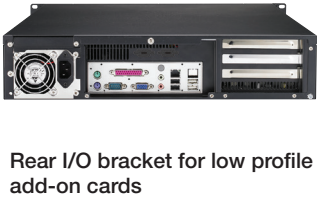
Front View



Inside View



Rear View





Компания «ЭлектроПласт» предлагает заключение долгосрочных отношений при поставках импортных электронных компонентов на взаимовыгодных условиях!

Наши преимущества:

- Оперативные поставки широкого спектра электронных компонентов отечественного и импортного производства напрямую от производителей и с крупнейших мировых складов;
- Поставка более 17-ти миллионов наименований электронных компонентов;
- Поставка сложных, дефицитных, либо снятых с производства позиций;
- Оперативные сроки поставки под заказ (от 5 рабочих дней);
- Экспресс доставка в любую точку России;
- Техническая поддержка проекта, помощь в подборе аналогов, поставка прототипов;
- Система менеджмента качества сертифицирована по Международному стандарту ISO 9001;
- Лицензия ФСБ на осуществление работ с использованием сведений, составляющих государственную тайну;
- Поставка специализированных компонентов (Xilinx, Altera, Analog Devices, Intersil, Interpoint, Microsemi, Aeroflex, Peregrine, Syfer, Eurofarad, Texas Instrument, Miteq, Cobham, E2V, MA-COM, Hittite, Mini-Circuits, General Dynamics и др.);

Помимо этого, одним из направлений компании «ЭлектроПласт» является направление «Источники питания». Мы предлагаем Вам помощь Конструкторского отдела:

- Подбор оптимального решения, техническое обоснование при выборе компонента;
- Подбор аналогов;
- Консультации по применению компонента;
- Поставка образцов и прототипов;
- Техническая поддержка проекта;
- Защита от снятия компонента с производства.



Как с нами связаться

Телефон: 8 (812) 309 58 32 (многоканальный)

Факс: 8 (812) 320-02-42

Электронная почта: org@eplast1.ru

Адрес: 198099, г. Санкт-Петербург, ул. Калинина, дом 2, корпус 4, литера А.