

## AC Feedthrough Filter

**SCHAFFNER**  
energy efficiency and reliability



- IEC/EN 60939 approval
- Rated currents from 10 to 250A
- 5kV pulse test capability
- Class Y2 capacitor

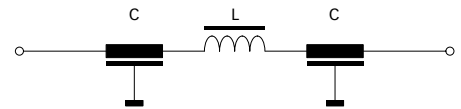
### Approvals



### Technical specifications

Maximum continuous operating voltage:	300VAC, 50/60Hz (ENEC) 250VAC, 50/60Hz (UL) 1000VDC max.
Rated currents:	10 to 250A @ 60°C max.
Capacitor class:	Y2
High potential test voltage:	3000VDC for 2 sec
Insulation resistance (100VDC after 60 sec):	< 0.33μF, R > 15,000MΩ > 0.33μF, τ > 5000s
Temperature range (operation and storage):	-40°C to +100°C (40/100/21)
Flammability corresponding to:	UL 94V-2 or better
MTBF @ 60°C/300V (Mil-HB-217F):	< 200A: > 675,000 hours ≥ 200A: > 494,000 hours

### Typical electrical schematic



Feedthrough filters offer a high insertion loss across a broad band of frequencies from a few tens of kHz up to the GHz region. In general, feedthrough filters offer a higher level of EMI suppression than feedthrough capacitors of the same current rating. This is particularly relevant to applications where source impedance is smaller than 50Ω.

Different versions are available offering a wide selection on operating currents and performance levels. AC feedthrough filters are designed and approved for up to 300VAC 50/60Hz operation.

### Features and benefits

- Very low internal series inductance.
- Very high self-resonant frequency.
- Self-healing dielectric.
- High quality and reliability.
- Through-bulkhead mounting.
- Anti-twist protection.
- Custom-specific or dual-versions on request.

### Typical applications

- Power line filter for 110/240VAC power lines
- Increasing system and information security
- Power supplies
- Switching and cellular equipment
- Computer servers
- UPS power supplies
- Medical equipment
- Shielded rooms

**Feedthrough selector table**

Feedthrough	Rated current @ 60°C	Leakage current* @ 250VAC/50Hz	Capacitance** C	Inductance L @ 10kHz	DC resistance*** R @ 25°C	Weight [g]
	[A]	[mA]	[nF]	[nH]	[mΩ]	
FN 7611-10-M3	10	1.89	10	70	1.2	55
FN 7612-10-M3	10	8.86	47	70	1.52	70
FN 7611-16-M4	16	4.15	22	70	0.65	80
FN 7612-16-M4	16	18.85	100	70	0.92	90
FN 7611-32-M4	32	4.15	22	70	0.65	80
FN 7612-32-M4	32	18.85	100	70	0.92	90
FN 7611-63-M6	63	28.3	150	186	0.47	250
FN 7612-63-M6	63	88.6	470	124	0.53	500
FN 7612-100-M8	100	188	1000	124	0.23	750
FN 7611-250-M12	250	88.6	470	169	0.23	1086

\* Tolerance +20%

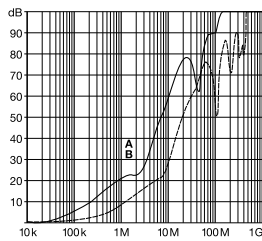
\*\* Tolerance ±20%

\*\*\* Tolerance +15%

**Typical filter attenuation**

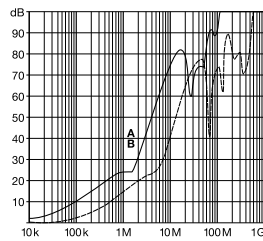
Full load, 50Ω system

**10A types**



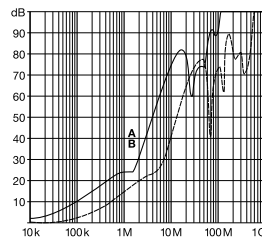
A = FN 7612-10-M3  
B = FN 7611-10-M3

**16A types**



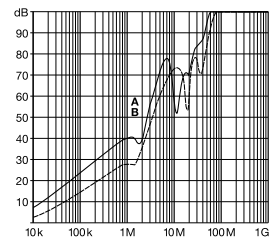
A = FN 7612-16-M4  
B = FN 7611-16-M4

**32A types**



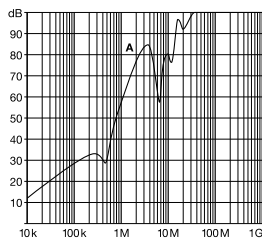
A = FN 7612-32-M4  
B = FN 7611-32-M4

**63A types**



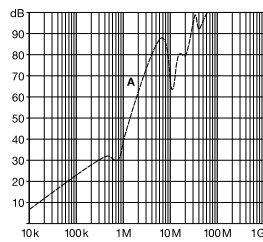
A = FN 7612-63-M6  
B = FN 7611-63-M6

**100A types**



A = FN 7612-100-M8

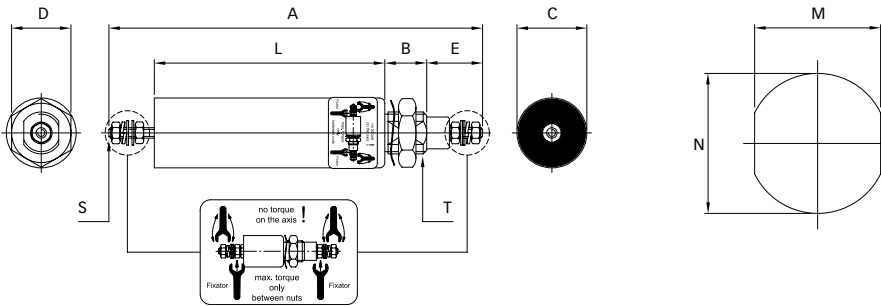
**250A types**



A = FN 7611-250-M12

**Mechanical data**

Panel cut out



**Dimensions**

	A	B	C	D	E	L	M	N	S	T
<b>FN 7611-10-M3</b>	107	12	20	17	16	66	10.3	Ø12.3	M3	M12x1
<b>FN 7612-10-M3</b>	140	12	20	17	16	99	10.3	Ø12.3	M3	M12x1
<b>FN 7611-16-M4</b>	116	14	25	22	18	69	14.3	Ø16.3	M4	M16x1
<b>FN 7612-16-M4</b>	148	14	25	22	18	101	14.3	Ø16.3	M4	M16x1
<b>FN 7611-32-M4</b>	116	14	25	22	18	69	14.3	Ø16.3	M4	M16x1
<b>FN 7612-32-M4</b>	148	14	25	22	18	101	14.3	Ø16.3	M4	M16x1
<b>FN 7611-63-M6</b>	173	16	32	27	26	105	18.3	Ø20.3	M6	M20x1
<b>FN 7612-63-M6</b>	189	19	54	41	26	118	24.3	Ø27.3	M6	M27x1.5
<b>FN 7612-100-M8</b>	227	19	54	41	32	144	24.3	Ø27.3	M8	M27x1.5
<b>FN 7611-250-M12</b>	267	19	54	41	46	160	29.3	Ø32.3	M12	M32x1.5
<b>Tolerances</b>						±2	±0.2			

All dimensions in mm; 1 inch = 25.4mm  
 Tolerances according: ISO 2768-m / EN 22768-m

**Recommended torque**

	M3	M4	M6	M8	M12	M12x1	M16x1	M20x1	M27x1.5	M32x1.5
<b>Terminal thread</b>	0.5Nm	1.2Nm	2.5Nm	5Nm	11Nm					
<b>Mounting thread</b>						3Nm	4Nm	7Nm	12Nm	14Nm

**Headquarters and  
global innovation and  
development center**

**Schaffner Group**  
Nordstrasse 11  
4542 Luterbach  
Switzerland  
T +41 32 681 66 26  
F +41 32 681 66 30  
info@schaffner.ch  
[www.schaffner.com](http://www.schaffner.com)

**Sales and application centers**

**China**  
**Schaffner EMC Ltd. Shanghai**  
Building 11, Lane 1365  
East Kangqiao Road  
Shanghai 201319  
T +86 21 6813 9855  
F +86 21 6813 9811  
cschina@schaffner.com  
[www.schaffner.com](http://www.schaffner.com)

**Germany**  
**Schaffner Deutschland GmbH**  
Schoemperlenstrasse 12B  
76185 Karlsruhe  
T +49 721 56910  
F +49 721 569110  
germanysales@schaffner.com

**Finland**  
**Schaffner Oy**  
Tynninkuja 7  
08700 Lohja  
T +358 19 35 72 71  
F +358 19 32 66 10  
finlandsales@schaffner.com

**France**  
**Schaffner EMC S.A.S.**  
112, Quai de Bezons  
95103 Argenteuil  
T +33 1 34 34 30 60  
F +33 1 39 47 02 28  
francesales@schaffner.com

**Italy**  
**Schaffner EMC S.r.l.**  
Via Galileo Galilei, 47  
20092 Cinisello Balsamo (MI)  
T +39 02 66 04 30 45/47  
F +39 02 61 23 943  
italysales@schaffner.com

**Japan**  
**Schaffner EMC K.K.**  
Mitsui-Seimei Sangenjaya Bldg. 7F  
1-32-12, Kamiyama, Setagaya-ku  
Tokyo 154-0011  
T +81 3 5712 3650  
F +81 3 5712 3651  
japansales@schaffner.com  
[www.schaffner.jp](http://www.schaffner.jp)

**Sweden**  
**Schaffner EMC AB**  
Turebergstorg 1, 6  
19147 Sollentuna  
T +46 8 5792 1121/22  
F +46 8 92 96 90  
swedensales@schaffner.com

**Switzerland**  
**Schaffner EMV AG**  
Nordstrasse 11  
4542 Luterbach  
T +41 32 681 66 26  
F +41 32 681 66 41  
sales@schaffner.ch

**Singapore**  
**Schaffner EMC Pte Ltd.**  
Blk 3015A Ubi Road 1  
05-09 Kampong Ubi Industrial  
Estate  
T +65 6377 3283  
F +65 6377 3281  
singaporesales@schaffner.com

**Spain**  
**Schaffner EMC España**  
Calle Caléndula 93,  
Miniparc III, Edificio E  
El Soto de la Moraleja,  
Alcobendas  
28109 Madrid  
T +34 618 176 133  
spainsales@schaffner.com

**Taiwan**  
**Schaffner EMV Ltd.**  
6th Floor, No 413  
Rui Guang Road  
Neihu District  
Taipei City 114  
T +886 2 87525050  
F +886 2 87518086  
taiwansales@schaffner.com

**Thailand**  
**Schaffner EMC Co. Ltd.**  
Northern Region Industrial Estate  
67 Moo 4 Tambon Ban Klang  
Amphur Muang P.O. Box 14  
Lamphun 51000  
T +66 53 58 11 04  
F +66 53 58 10 19  
thailandsales@schaffner.com

**UK**  
**Schaffner Ltd.**  
5 Ashville Way  
Molly Millars Lane  
Wokingham  
Berkshire RG41 2PL  
T +44 118 9770070  
F +44 118 9792969  
uksales@schaffner.com  
[www.schaffner.uk.com](http://www.schaffner.uk.com)

**USA**  
**Schaffner EMC Inc.**  
52 Mayfield Avenue  
Edison, New Jersey 08837  
T +1 732 225 9533  
F +1 732 225 4789  
usasales@schaffner.com  
[www.schaffner.com/us](http://www.schaffner.com/us)

To find your local partner within  
Schaffner's global network, please go to

[www.schaffner.com](http://www.schaffner.com)

May 2011

© 2011 Schaffner EMC.  
Specifications subject to change without  
notice. All trademarks recognized.

Schaffner is an ISO-registered company.  
Its products are designed and manufac-  
tured under the strict quality and environ-  
mental requirements of the ISO 9001 and  
ISO 14001 standards.

This document has been carefully  
checked. However, Schaffner does not  
assume any liability for errors or inac-  
curacies.

# Mouser Electronics

Authorized Distributor

Click to View Pricing, Inventory, Delivery & Lifecycle Information:

[Schaffner:](#)

[FN7611-16-M4](#) [FN7611-250-M12](#) [FN7612-16-M4](#) [FN7612-63-M6](#) [FN7612-100-M8](#)



Компания «ЭлектроПласт» предлагает заключение долгосрочных отношений при поставках импортных электронных компонентов на взаимовыгодных условиях!

Наши преимущества:

- Оперативные поставки широкого спектра электронных компонентов отечественного и импортного производства напрямую от производителей и с крупнейших мировых складов;
- Поставка более 17-ти миллионов наименований электронных компонентов;
- Поставка сложных, дефицитных, либо снятых с производства позиций;
- Оперативные сроки поставки под заказ (от 5 рабочих дней);
- Экспресс доставка в любую точку России;
- Техническая поддержка проекта, помощь в подборе аналогов, поставка прототипов;
- Система менеджмента качества сертифицирована по Международному стандарту ISO 9001;
- Лицензия ФСБ на осуществление работ с использованием сведений, составляющих государственную тайну;
- Поставка специализированных компонентов (Xilinx, Altera, Analog Devices, Intersil, Interpoint, Microsemi, Aeroflex, Peregrine, Syfer, Eurofarad, Texas Instrument, Miteq, Cobham, E2V, MA-COM, Hittite, Mini-Circuits, General Dynamics и др.);

Помимо этого, одним из направлений компании «ЭлектроПласт» является направление «Источники питания». Мы предлагаем Вам помощь Конструкторского отдела:

- Подбор оптимального решения, техническое обоснование при выборе компонента;
- Подбор аналогов;
- Консультации по применению компонента;
- Поставка образцов и прототипов;
- Техническая поддержка проекта;
- Защита от снятия компонента с производства.



#### Как с нами связаться

**Телефон:** 8 (812) 309 58 32 (многоканальный)

**Факс:** 8 (812) 320-02-42

**Электронная почта:** [org@eplast1.ru](mailto:org@eplast1.ru)

**Адрес:** 198099, г. Санкт-Петербург, ул. Калинина, дом 2, корпус 4, литера А.