

COOPER

**Bussmann®**



# Consumer Aftermarket Product Catalog

Specialty and High Amp Fuses, and Fusible Links

**COOPER** Bussmann

## Specialty and High Amp Fuses & Fusible Links

### Female Maxi Fuses

Developed to meet the growing OEM demand for smaller components, the FMX and low-profile FMX Female Maxi fuses offer high amp protection in compact packages. Both FMX and low-profile FMX fuses are available in amp ratings from 20 to 60A.

#### easyID™ FMX Illuminating Female Maxi Fuses

Following on the popularity and wider application of FMX fuses for late-model OEM vehicles, the easyID illuminating FMX fuse line with LED open fuse indication technology is available in popular amp ratings. Tri-lingual packaging provides easy retail selling.

Color Code	1 Fuse Tri-lingual Blister Pack (Amps)
Blue	BP/FMX-20ID
Pink	BP/FMX-30ID
Green	BP/FMX-40ID
Red	BP/FMX-50ID
Yellow	BP/FMX-60ID

**easyID™**  
Blown Fuse Indication



### FMX Non-illuminating Female Maxi Fuses

Color Code	Part No. (Amps)	Blister Pack	Tri-Lingual Blister
Blue	FMX-20	X	X
Pink	FMX-30	X	X
Green	FMX-40	X	X
Red	FMX-50	X	X
Yellow	FMX-60	X	X



### FMX\_LP Low-Profile Female Maxi Fuses

Color Code	Part No. (Amps)	Blister Pack
Blue	FMX-20LP	BP/FMX-20LP-RP
White	FMX-25LP	
Pink	FMX-30LP	BP/FMX-30LP-RP
Green	FMX-40LP	BP/FMX-40LP-RP
Red	FMX-50LP	BP/FMX-50LP-RP
Yellow	FMX-60LP	BP/FMX-60LP-RP



### FL Series Fusible Links

Used primarily in Japanese-designed vehicles for wiring harness protection.

#### FL Series Fusible Link Color Codes (Amps)

Color	FLB	FLD	FLF	FLM	FLN	FLS
Light Blue	-	-	20			
Pink	30	30	30	30	-	30
Green	40	40	40	-	30	40
Red	50	50	50	-	-	-
Yellow	60	-	60	60	-	-
Brown	70	-	-	-	25	-
Black	80	80	-	80	-	-
Blue	100	100	-	100	-	-
Gray	120	-	-	120	-	-
Maroon	140	-	-	-	-	-

Part No. (Amps)	Blister Pack	Tri-Lingual Blister
FLB-30	X	
FLB-40	X	
FLB-50	X	
FLB-60	X	X
FLB-70	X	X
FLB-80	X	
FLB-100	X	
FLB-120	X	
FLB-140	X	

#### FLB Bolt-Mount Fusible Links

Bolts into fuse block, 13/16" bolt terminal.



#### FLD Bolt-Mount Fusible Links

Bolts into fuse block, 9/16" bolt terminal.



No. (Amps)	Blister Pack
FLD-30	X
FLD-40	X
FLD-50	X
FLD-80	X
FLD-100	X
FLD-120	X
FLD-140	X

Part No. (Amps)	Blister Pack	Tri-Lingual Blister
FLF-20	X	X
FLF-30	X	X
FLF-40	X	X
FLF-50	X	X
FLF-60	X	X

#### FLF Female Termination Fusible Links



#### FLM Male Termination Fusible Links



Part No. (Amps)	Blister Pack	Tri-Lingual Blister
FLM-30	X	
FLM-60	X	X
FLM-80	X	X
FLM-100	X	X
FLM-120	X	

## Specialty and High Amp Fuses & Fusible Links

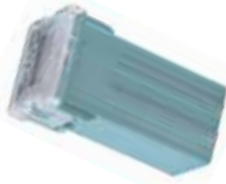
### FLN Female Termination Fusible Links With Locking Tab

Part No. (Amps)	Blister Pack
FLN-25	
FLN-30	X



### FLS Female Miniature Termination Fusible Links

Part No. (Amps)	Blister Pack
FLS-30	X
FLS-40	X



### CBBF Battery Fuses

These fuses are suitable for main and auxiliary circuit protection (alternator outputs, starter motor inputs and accessories) in demanding environments or tight space constraints. Marine-rated under SAE J1117 for ignition protection. Mounting bar with nut and cover available - order Part No. CBBF-MBC.



Part No. (Amps)			
CBBF-30	CBBF-75	CBBF-125	CBBF-225
CBBF-40	CBBF-80	CBBF-150	CBBF-250
CBBF-50	CBBF-90	CBBF-175	CBBF-300
CBBF-60	CBBF-100	CBBF-200	

### Fusible Links and Fusible Link Wire

14Vdc BP/FL-14 and BP/FL-16 kits includes 9" length fusible link wire with printed label attached indicating wire gauge numbers; two different ring terminals and crimp connector.

Part No.	Description
BP/FL-14	9-inches of 14 gauge fusible link wire with 3/16" and 1/8" terminals and crimp connector.
BP/FL-16	9-inches of 16 gauge fusible link wire with 1/4" and 3/16" terminals and crimp connector.
BP/FLW-14	Six foot coil of 14 gauge fusible link wire.



### ANN & ANL Current Limiters

Often used to protect charging systems in battery-operated forklifts, golf carts and similar applications. These rugged, reliable fuses offer high amp ratings in a compact size just 7/8" x 3 1/16".

Durable glass-laminated melamine body and riveted construction offer superior service life in heavy-duty applications. Clear window provides open-fuse indication.

### ANN Very Fast-Acting Current Limiters

For applications up to 800 amps. Uses SFR fuse block - see page 20.

Part No. (Amps)	
ANN-10	ANN-225
ANN-35	ANN-250
ANN-40	ANN-275
ANN-50	ANN-300
ANN-60	ANN-325
ANN-80	ANN-350
ANN-90	ANN-400
ANN-100	ANN-500
ANN-125	ANN-600
ANN-150	ANN-700
ANN-175	ANN-800
ANN-200	



### ANL Non Time-Delay Current Limiters

For applications up to 750 amps. Uses SFR fuse block - see page 20.

Part No. (Amps)	
ANL-35	ANL-225
ANL-40	ANL-250
ANL-50	ANL-275
ANL-60	ANL-300
ANL-80	ANL-325
ANL-100	ANL-350
ANL-125	ANL-400
ANL-130	ANL-500
ANL-150	ANL-600
ANL-175	ANL-675
ANL-200	ANL-750



### AMG High Amp Stud-Mount Fuses

Part No. (Amps)	Blister Pack
AMG-100	
AMG-125	
AMG-150	
AMG-175	X
AMG-200	
AMG-225	
AMG-250	
AMG-300	

Used for high current applications on selected late model vehicles. AMG fuses are available in amp ratings from 100A to 300A. HMEG fuse block with splash-proof cover is also available - see page 20.



### AMI High Amp Stud-Mount Fuses

Part No. (Amps)
AMI-40
AMI-50
AMI-80

These high amp fuses are used in power distribution protection for automotive systems on some late model cars. AMI fuses are available in amp ratings: 40, 50, and 80A. Uses HMIID fuse holder - see page 20.





Компания «ЭлектроПласт» предлагает заключение долгосрочных отношений при поставках импортных электронных компонентов на взаимовыгодных условиях!

Наши преимущества:

- Оперативные поставки широкого спектра электронных компонентов отечественного и импортного производства напрямую от производителей и с крупнейших мировых складов;
- Поставка более 17-ти миллионов наименований электронных компонентов;
- Поставка сложных, дефицитных, либо снятых с производства позиций;
- Оперативные сроки поставки под заказ (от 5 рабочих дней);
- Экспресс доставка в любую точку России;
- Техническая поддержка проекта, помощь в подборе аналогов, поставка прототипов;
- Система менеджмента качества сертифицирована по Международному стандарту ISO 9001;
- Лицензия ФСБ на осуществление работ с использованием сведений, составляющих государственную тайну;
- Поставка специализированных компонентов (Xilinx, Altera, Analog Devices, Intersil, Interpoint, Microsemi, Aeroflex, Peregrine, Syfer, Eurofarad, Texas Instrument, Miteq, Cobham, E2V, MA-COM, Hittite, Mini-Circuits, General Dynamics и др.);

Помимо этого, одним из направлений компании «ЭлектроПласт» является направление «Источники питания». Мы предлагаем Вам помощь Конструкторского отдела:

- Подбор оптимального решения, техническое обоснование при выборе компонента;
- Подбор аналогов;
- Консультации по применению компонента;
- Поставка образцов и прототипов;
- Техническая поддержка проекта;
- Защита от снятия компонента с производства.



#### Как с нами связаться

**Телефон:** 8 (812) 309 58 32 (многоканальный)

**Факс:** 8 (812) 320-02-42

**Электронная почта:** [org@eplast1.ru](mailto:org@eplast1.ru)

**Адрес:** 198099, г. Санкт-Петербург, ул. Калинина, дом 2, корпус 4, литера А.