

500 kHz / 1 MHz Precision LCR Meter

Models 894 & 895



Industry-Leading Performance

The 894 and 895 are high accuracy LCR meters capable of measuring inductance, capacitance, and resistance of components and materials at DC or from 20 Hz to 500 kHz or 1 MHz respectively. These LCR meters provide flexible AC and DC test signal configuration. AC test signal voltage is variable from 5 mVrms to 2 Vrms, the AC current is adjustable up to 66.7 mArms, depending on the AC impedance selected, and a DC bias signal can be added. The vivid 4.3-inch TFT LCD offers a clear view of all measured and setting values along with BIN sorting comparator results and a handy Zoom feature that enlarges the measured values to full screen. With a basic accuracy of 0.05%, auto level control (ALC), open / short / load correction and cable length compensation, these meter are perfect tools for R&D, manufacturing and quality control applications.

DC Biasing

Both the 894 and 895 feature a DC bias source which allows the meter to apply a DC signal to the device under test to simulate in-circuit conditions.

DC biasing is commonly used to measure capacitance of ceramic, MLCC, polyester and other capacitors with high dielectric constants. These type of capacitors exhibit a significant change in capacitance with a DC voltage applied. By controlling the DC voltage, users can obtain a more deterministic measurement result. Other applications include evaluation of cored-inductors and junction capacitance of semiconductor devices.

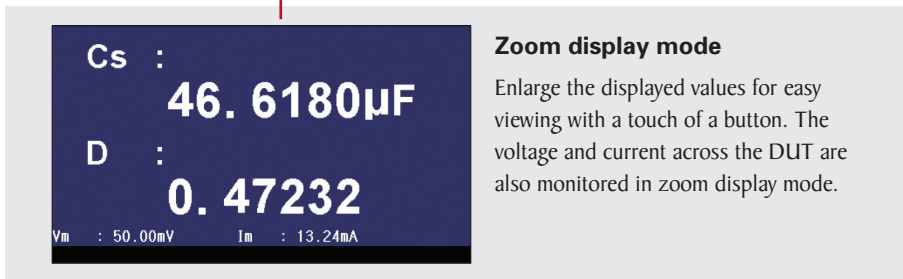
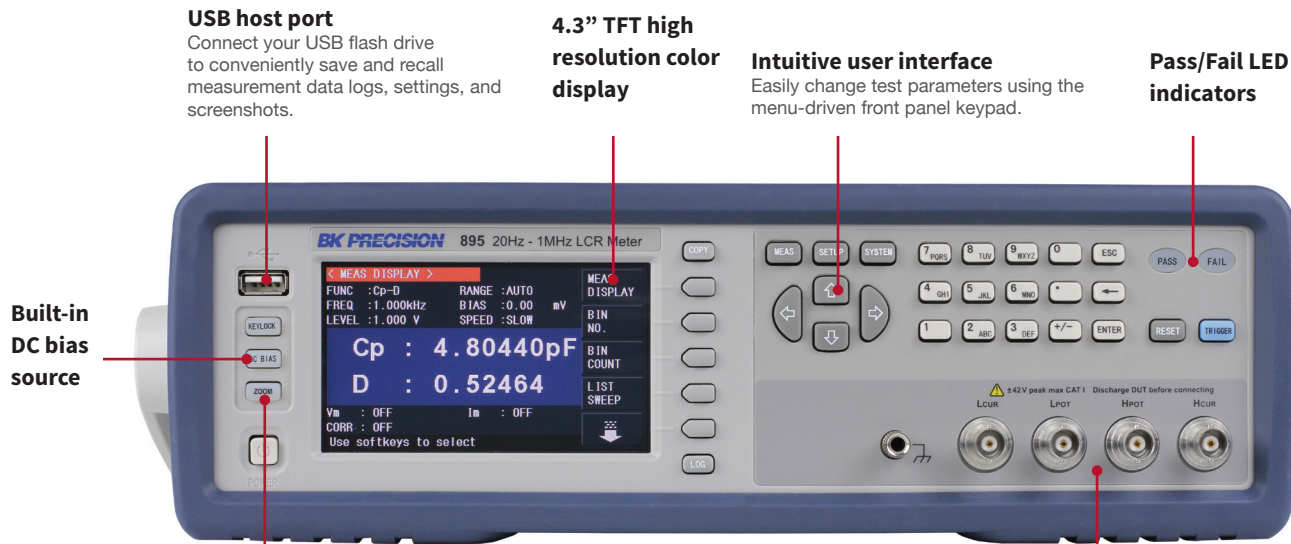
The DC bias source is adjustable from -5V to +5V / -50 mA to +50 mA. Additionally the voltage or current levels can be swept while logging the resulting capacitance.

Features & Benefits

- AC test signal voltage adjustable up to 2 Vrms
- 3 AC current ranges, selectable via 30 Ω, 50 Ω or 100 Ω internal AC impedance. The 30 Ω setting provides up to 66.7 mArms of drive current, sufficient for larger inductors and transformers.
- Built-in DC bias source adjustable from -5V to +5V / -50 mA to +50 mA
- Fast measurement speed up to 13 ms/reading to increase manufacturing throughput
- Adjustable measurement speed for fast readout or better accuracy
- 201-point programmable list sweep function providing ability to sweep frequency, AC and DC bias voltage/current levels
- Auto-level control to maintain the measurement signal applied to the DUT at a constant level
- Test signal voltage and current monitoring
- BIN comparator function to sort components in up to 10 bin locations
- Handler interface for easy integration with a component handler
- 1 meter cable compensation
- 4-terminal fixture and Kelvin clip test leads included
- Transformer test function with optional transformer test fixture TL89T1
- Versatile trigger functionality (internal, external, bus and manual)
- Standard USB, LAN, and GPIB (895 only) interface for remote control using SCPI commands

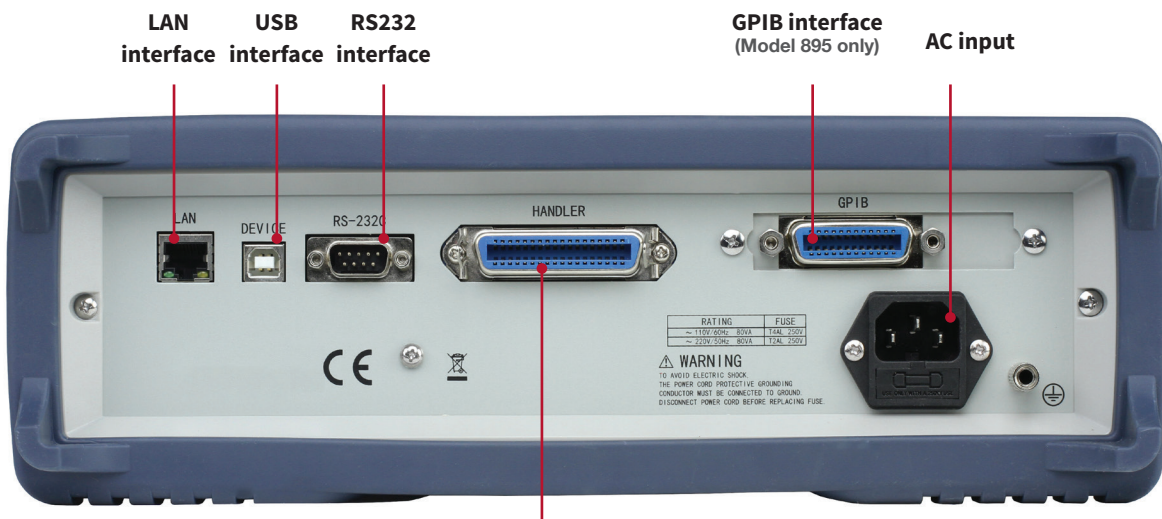
Model	894	895
Measurement parameters	L, C, R, G, X, Z, Y, B, θ, Q, D, DCR	
Basic accuracy	0.05%	
DCR measurement range	0.01 Ω - 100 MΩ	
Test frequency range	20 Hz - 500 kHz	20 Hz - 1 MHz

Front panel



Variable test signals
The instrument provides settable voltage levels from 5 mVrms to 2 Vrms to evaluate your DUT.

Rear panel



Handler interface
36-pin connector to interface with component handler via input/output control signals. Includes bin and list sweep comparator results and end of measurement (EOM) indicator output signals, external trigger, and key lock input signal.

Powerful Features

Programmable List sweep

< LIST SWEEP DISP >					MEAS DISPLAY
MODE	SEQ				
No.	FREQ[Hz]	Cs[F]	D []	CMP	
001	20.0000	102.797n	0.00162	L	
002	5.01990k	101.775n	0.00773	P	
003	10.0198k	101.408n	0.00973	P	
004	15.0197k	101.149n	0.01098	P	
005	20.0196k	100.946n	0.01183	P	
006	25.0195k	100.780n	0.01255	P	
007	30.0194k	100.637n	0.01315	P	
*008	35.0193k	100.511n	0.01371	P	
009	40.0192k	100.400n	0.01423	P	
010	45.0191k	100.301n	0.01466	P	

Use the built-in linear and logarithmic sweep function, supporting up to 201 sweep points, to conveniently display, analyze and store primary and secondary parameters of a component. Sweep test frequency, AC source voltage and current levels, DC bias source voltage and current levels. A delay can be programmed after each sweep point. The list sweep can be triggered internally, manually or externally and executed in sequence or step mode.

Bin sorting function

< BIN No. DISP >			ON
FUNC	: R-X	RANGE	: AUTO
FREQ	: 1.000kHz	BIAS	: 0.00 mV
LEVEL	: 1.000 V	SPEED	: SLOW
		COMP	: ON
BIN OUT			
R	: 7.08130 Ω	X	: -1.62169kΩ
CAL	: OFF		

Quickly sort components using the instrument's 9 primary BINs, a secondary BIN and out-of-specification BIN. The results can be displayed in a table on-screen or output via the handler interface. High and low limits for each bin can be set up in absolute, tolerance or sequential mode with Pass/Fail indicator.

Remote PC control

< LAN SETUP >		SYSTEM SETUP
LAN Status	: Working Properly	LAN SETUP
HOST NAME	: 89x	
DHCP	: OFF	
AUTO IP	: OFF	
IP ADDR	: 10. 0. 1. 55	
SUBNET MASK	: 255.255.254. 0	
GATEWAY	: 10. 0. 1.254	DEFAULT SETTINGS
DNS SERVER1	: 10. 0. 1.254	SYSTEM RESET
DNS SERVER2	: 10. 0. 1.254	

Integrate your LCR meter into an automated test system and control it from a PC using SCPI commands via the RS232, USB, LAN, or GPIB (895 only) interface.

Transformer measurements (optional)

Using optional test fixture TL89T1, the 894 and 895 can test the primary and secondary inductance L_1 , L_2 , turn ratio (N , I/N), mutual inductance (M), and primary and secondary direct-current resistance (R_2) of a transformer directly. Additionally, the two common transformer parameters winding equivalent capacitance C_o and leakage inductance L_k can be characterized indirectly.

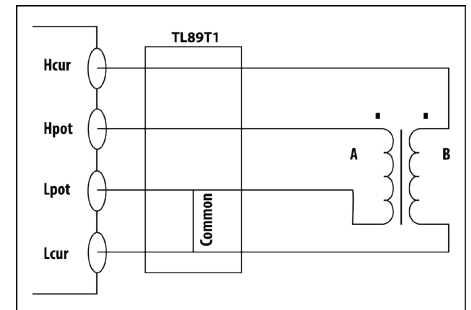


Diagram showing the TL89T1 connected to a transformer under test.

Flexible test accessories

Standard accessories shipped with each unit are Kelvin clip test leads for 4-wire measurements, a test fixture, and shorting bar. The optional transformer test fixture allows users to measure transformer parameters.



Specifications

Valid after 30 minutes of warm up time, operating at 23 °C ± 5 °C

Test Signal Frequency			
Model	Range	Minimum resolution	Accuracy
894	20 Hz - 500 kHz	0.01 Hz	0.01 %
895	20 Hz - 1 MHz		

Test Signal Levels		
AC source (ALC* OFF)		
Voltage Accuracy		10% x set voltage ± 2mV
Voltage Level	Resolution	
5 mVrms - 100 mVrms	100 µVrms	
100 mVrms - 1 Vrms	1 mVrms	
1 Vrms - 2 Vrms	10 mVrms	
Current Accuracy		10 % x set current ± 10 µA
Current Range	Impedance	
166.7 µArms - 66.7 mArms	30 Ω	
100.0 µArms - 40.0 mArms	50 Ω	
50.0 µArms - 20.0 mArms	100 Ω	
AC source (ALC* ON) ¹		
Voltage	Range	10 mVrms – 1 Vrms
	Accuracy	6% x set voltage ± 2 mV
Current	Range	100 µArms - 10 mArms
	Accuracy	6 % x set current ± 10 µA
DC bias source		
Voltage	Range	-5 V to +5 V
	Accuracy	1 % x set voltage ± 5 mV
	Resolution	0.01 mV
Current	Range	-50 mA to +50 mA
	Accuracy	1 % x set current ± 50 µA
	Resolution	0.1 µA

*Auto Level Control

1: Resolution and impedance see AC source (ALC OFF) specification

Measurements		
Measurement parameters	L, C, R, G, X, Z, Y, B, θ, Q, D, DCR	
Transformer measurement parameters²	L2A, L2B, N, I/N, M	
Basic accuracy	0.05 %	
AC source Output impedance (± 2%)	30 Ω, 50 Ω, 100 Ω	
Typical measurement time (≥10 kHz) (excluding display refresh time)	Fast	13 ms / measurement
	Medium	67 ms / measurement
	Slow	187 ms / measurement
Equivalent circuit	Series, Parallel	
Range mode	Auto, Hold	
Averaging	1-255 measurements	
Correction function	Open, Short and Load correction	

2: Requires optional fixture TL89TI

Measurements		
Cable length compensation	0, & I meter	
Math operations	Direct reading, ΔABS, Δ%	
Trigger mode	Internal, Manual, External, Bus	
Delay time setup	Time from trigger to start: 0 to 60 seconds	
	Resolution: 1 ms	
Comparator (Bin sorting)	10-bin sorting, primary bins BIN1-BIN9 and OUT, secondary bin AUX	
	Bin counter: 0 to 999,999	
	PASS/FAIL indication via front panel LED or handler interface signal	
List sweep	201 sweep points	Sweep test frequency, test signal AC voltage, test signal AC current, test signal DC bias voltage and test signal DC bias current
	Measurement parameters	Primary and secondary
	Sweep modes	Linear or logarithmic
	Trigger mode	Sequential and Step
	Comparator	One pair of lower and upper limits for primary or secondary parameter (user selectable)
Internal non-volatile memory	Save / recall 40 setups	

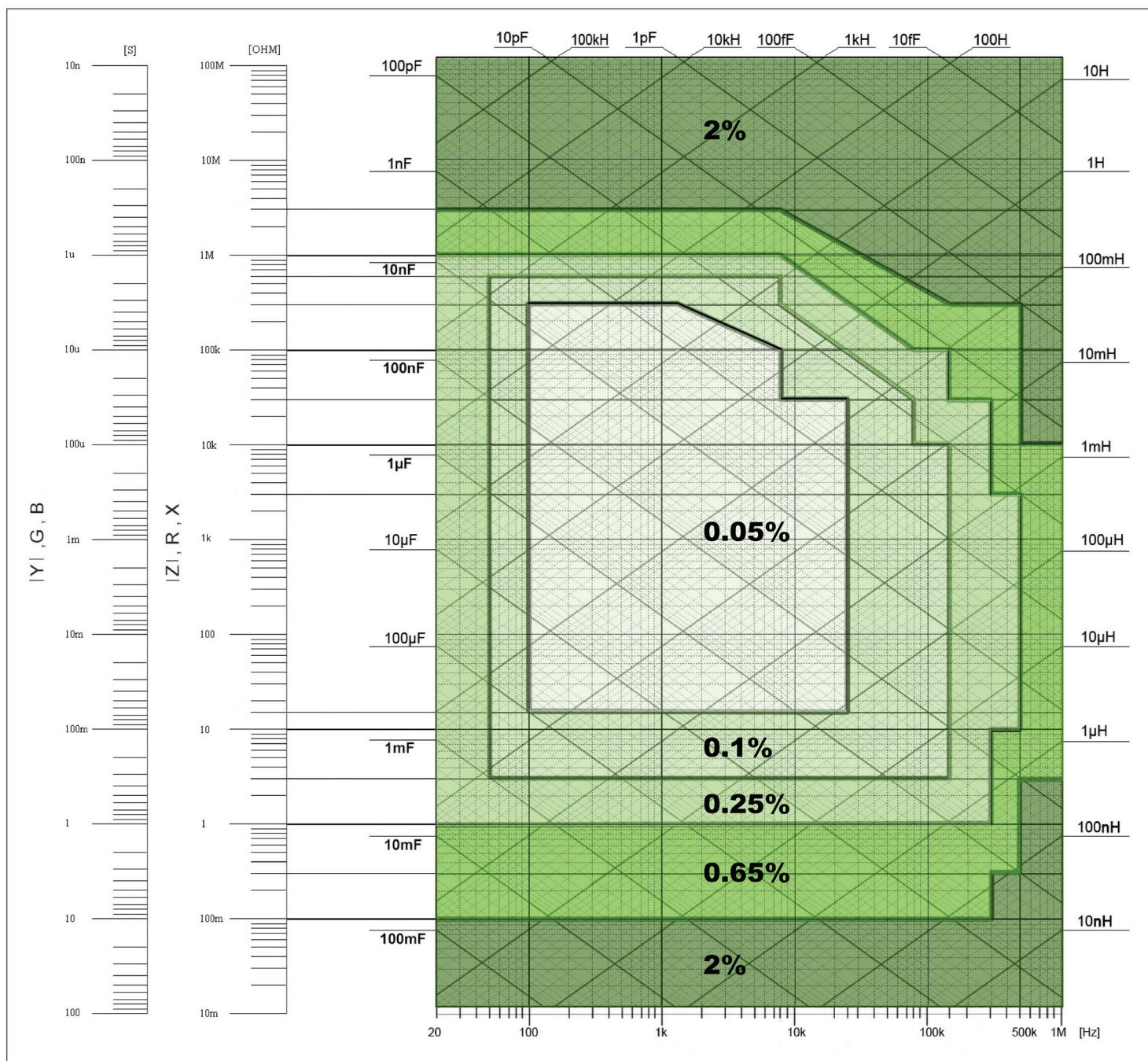
General		
External USB memory	Save / recall setups, screenshots, measurements and sweep data logs	
Remote interface	USB (USBTMC or virtual COM), RS232, LAN, GPIB (895 only)	
Handler interface	36-pin connector	
AC input	Voltage	110/220 VAC ±10%
	Frequency	47 – 63 Hz
Power consumption	Max. 80 VA	
Operating temperature	0 °C to 40 °C	
Storage temperature	-10 °C to 70 °C	
Relative humidity	Up to 80%	
Display	4.3" TFT color display	
Dimensions (WxHxD)	without bezel: 280 mm × 88 mm × 370 mm (11.02" × 3.46" × 14.56")	
	with bezel: 369 mm × 108 mm × 408 mm (14.52" × 4.25" × 16.06")	
Weight	5 kg (11 lbs)	
Safety	EN61010-1:2001, EU Low Voltage Directive 2006/95/EC	
Electromagnetic Compatibility	Meets EMC Directive 2004/108/EC, EN61326-1:2006	

Three-Year Warranty		
Standard accessories	AC power cord, 4-wire Kelvin clip test lead, 4-terminal test fixture, shorting bar, certificate of calibration, test report	
Optional accessories	Transformer test fixture TL89TI	

Measurement Accuracy

The chart below depicts the basic measurement accuracy under the following conditions: AC test signal level 0.5 Vrms or 1 Vrms, measurement speed Slow or Medium, cable length 0 m, DC bias OFF, $D_x \leq 0.1$ or $Q_x \leq 0.1$ respectively. When selecting measurement speed Fast, double the accuracy value obtained from the chart.

For more detailed measurement accuracy specifications and other test conditions, refer to the user manual.



DCR Accuracy: $A(1 + R_x / 5 \text{ M}\Omega + 16 \text{ m}\Omega / R_x)[\%] \pm 0.2 \text{ m}\Omega$ $A=0.25$ for slow & medium speed, $A=0.5$ for fast speed



Компания «ЭлектроПласт» предлагает заключение долгосрочных отношений при поставках импортных электронных компонентов на взаимовыгодных условиях!

Наши преимущества:

- Оперативные поставки широкого спектра электронных компонентов отечественного и импортного производства напрямую от производителей и с крупнейших мировых складов;
- Поставка более 17-ти миллионов наименований электронных компонентов;
- Поставка сложных, дефицитных, либо снятых с производства позиций;
- Оперативные сроки поставки под заказ (от 5 рабочих дней);
- Экспресс доставка в любую точку России;
- Техническая поддержка проекта, помощь в подборе аналогов, поставка прототипов;
- Система менеджмента качества сертифицирована по Международному стандарту ISO 9001;
- Лицензия ФСБ на осуществление работ с использованием сведений, составляющих государственную тайну;
- Поставка специализированных компонентов (Xilinx, Altera, Analog Devices, Intersil, Interpoint, Microsemi, Aeroflex, Peregrine, Syfer, Eurofarad, Texas Instrument, Miteq, Cobham, E2V, MA-COM, Hittite, Mini-Circuits, General Dynamics и др.);

Помимо этого, одним из направлений компании «ЭлектроПласт» является направление «Источники питания». Мы предлагаем Вам помощь Конструкторского отдела:

- Подбор оптимального решения, техническое обоснование при выборе компонента;
- Подбор аналогов;
- Консультации по применению компонента;
- Поставка образцов и прототипов;
- Техническая поддержка проекта;
- Защита от снятия компонента с производства.



Как с нами связаться

Телефон: 8 (812) 309 58 32 (многоканальный)

Факс: 8 (812) 320-02-42

Электронная почта: org@eplast1.ru

Адрес: 198099, г. Санкт-Петербург, ул. Калинина, дом 2, корпус 4, литера А.