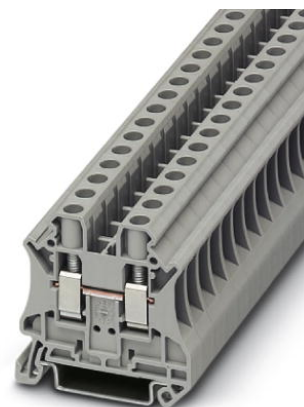


# UT 6

Order No.: 3044131



<http://eshop.phoenixcontact.de/phoenix/treeViewClick.do?UID=3044131>

Feed-through modular terminal block, Type of connection: Screw connection, Screw connection, Cross section: 0.2 mm<sup>2</sup> - 10 mm<sup>2</sup>, AWG 24 - 8, Width: 8.2 mm, Color: gray, Mounting type: NS 35/7,5, NS 35/15



## Commercial data

|                          |                   |
|--------------------------|-------------------|
| EAN                      | 4017918960438     |
| Pack                     | 50 pcs.           |
| Customs tariff           | 85369010          |
| Weight/Piece             | 0.01503 KG        |
| Catalog page information | Page 27 (CL-2009) |

## Product notes

WEEE/RoHS-compliant since: 10/26/2006



<http://www.download.phoenixcontact.com>  
Please note that the data given here has been taken from the online catalog. For comprehensive information and data, please refer to the user documentation. The General Terms and Conditions of Use apply to Internet downloads.

## Technical data

### General

|                       |      |
|-----------------------|------|
| Number of levels      | 1    |
| Number of connections | 2    |
| Color                 | gray |

|                                    |    |
|------------------------------------|----|
| Insulating material                | PA |
| Inflammability class acc. to UL 94 | V0 |

**Dimensions**

|                  |         |
|------------------|---------|
| Width            | 8.2 mm  |
| Length           | 47.7 mm |
| Height NS 35/7,5 | 47.5 mm |
| Height NS 35/15  | 55 mm   |

**Technical data**

|                                  |  |
|----------------------------------|--|
| Maximum load current             | 57 A (with 10 mm <sup>2</sup> conductor cross section) |
| Rated surge voltage              | 8 kV   |
| Pollution degree                 | 3  |
| Surge voltage category           | III  |
| Insulating material group        | I  |
| Connection in acc. with standard | IEC 60947-7-1  |
| Nominal current I <sub>N</sub>   | 41 A   |
| Nominal voltage U <sub>N</sub>   | 1000 V   |
| Open side panel                  | ja   |

**Connection data**

|  |                      |
|--|----------------------|
| Conductor cross section solid min.   | 0.2 mm <sup>2</sup>  |
| Conductor cross section solid max.   | 10 mm <sup>2</sup>   |
| Conductor cross section stranded min.                                      | 0.2 mm <sup>2</sup>  |
| Conductor cross section stranded max.                                      | 10 mm <sup>2</sup>   |
| Conductor cross section AWG/kcmil min.                                     | 24                   |
| Conductor cross section AWG/kcmil max                                      | 8                    |
| Conductor cross section stranded, with ferrule without plastic sleeve min. | 0.25 mm <sup>2</sup> |
| Conductor cross section stranded, with ferrule without plastic sleeve max. | 6 mm <sup>2</sup>    |
| Conductor cross section stranded, with ferrule with plastic sleeve min.    | 0.25 mm <sup>2</sup> |
| Conductor cross section stranded, with ferrule with plastic sleeve max.    | 6 mm <sup>2</sup>    |
| 2 conductors with same cross section, solid min.                           | 0.2 mm <sup>2</sup>  |
| 2 conductors with same cross section, solid max.                           | 2.5 mm <sup>2</sup>  |
| 2 conductors with same cross section, stranded min.                        | 0.2 mm <sup>2</sup>  |

|   |                      |
|---|----------------------|
| 2 conductors with same cross section, stranded max.                                     | 2.5 mm <sup>2</sup>  |
| 2 conductors with same cross section, stranded, TWIN ferrules with plastic sleeve, min. | 0.5 mm <sup>2</sup>  |
| 2 conductors with same cross section, stranded, TWIN ferrules with plastic sleeve, max. | 4 mm <sup>2</sup>    |
| 2 conductors with same cross section, stranded, ferrules without plastic sleeve, min.   | 0.25 mm <sup>2</sup> |
| 2 conductors with same cross section, stranded, ferrules without plastic sleeve, max.   | 1.5 mm <sup>2</sup>  |
| Type of connection  | Screw connection     |
| Stripping length  | 10 mm                |
| Internal cylindrical gage   | A5                   |
| Screw thread  | M4                   |
| Tightening torque, min  | 1.5 Nm               |
| Tightening torque max   | 1.8 Nm               |

### Certificates / Approvals



Certification CB, CSA, CUL, DNV, GL, LR, UL, VDE-PZI

Certification Ex: IECEX, KEMA-EX

#### CSA

|                       |       |
|-----------------------|-------|
| Nominal voltage $U_N$ | 600 V |
| Nominal current $I_N$ | 50 A  |
| AWG/kcmil             | 24-8  |

#### CUL

|                       |       |
|-----------------------|-------|
| Nominal voltage $U_N$ | 600 V |
| Nominal current $I_N$ | 50 A  |
| AWG/kcmil             | 24-8  |

#### UL

|                       |       |
|-----------------------|-------|
| Nominal voltage $U_N$ | 600 V |
| Nominal current $I_N$ | 50 A  |
| AWG/kcmil             | 24-8  |

| <b>Accessories</b> |                             |  |
|--------------------|-----------------------------|--|
| Item               | Designation                 | Description  |
| <b>Assembly</b>    |                             |  |
| 3047167            | ATP-UT                      | Partition plate, Length: 50 mm, Width: 2 mm, Height: 48 mm, Color: gray  |
| 3022276            | CLIPFIX 35-5                | Snap-on end bracket, for NS 35/7.5 or NS 35/15 DIN rail, can be fitted with Zack strip ZB 5 and ZBF 5, terminal strip marker KLM 2 and KLM, parking facility for FBS...5, FBS...6, KSS 5, KSS 6, width: 5,15 mm, color: gray |
| 3047028            | D-UT 2,5/10                 | End cover, Length: 47.7 mm, Width: 2.2 mm, Height: 48.4 mm, Color: gray  |
| 0801762            | NS 35/ 7,5 CU UNPERF 2000MM | DIN rail, material: Copper, unperforated, height 7.5 mm, width 35 mm, length: 2 m  |
| 1207640            | NS 35/ 7,5 PERF 755MM       | NS 35 DIN rail, height 7.5 mm, length 755 mm   |
| 1207653            | NS 35/ 7,5 PERF 955MM       | NS35 DIN rail, height 7.5 mm, length 955 mm  |
| 1207666            | NS 35/ 7,5 PERF 1155MM      | NS 35 DIN rail, height 7.5 mm, length 1155 mm  |
| 0801733            | NS 35/ 7,5 PERF 2000MM      | DIN rail, material: Steel, galvanized and passivated with a thick layer, perforated, height 7.5 mm, width 35 mm, length: 2 m   |
| 0801681            | NS 35/ 7,5 UNPERF 2000MM    | DIN rail, material: Steel, unperforated, height 7.5 mm, width 35 mm, length: 2 m   |
| 1201756            | NS 35/15 AL UNPERF 2000MM   | DIN rail, deep-drawn, high profile, unperforated, 1.5 mm thick, material: Aluminum, height 15 mm, width 35 mm, length 2 m  |
| 1201895            | NS 35/15 CU UNPERF 2000MM   | DIN rail, material: Copper, unperforated, 1.5 mm thick, height 15 mm, width 35 mm, length: 2 m   |
| 1207679            | NS 35/15 PERF 755MM         | NS 35 DIN rail, perforated, height 15 mm, length 755 mm  |
| 1207682            | NS 35/15 PERF 955MM         | NS 35 DIN rail, perforated, height 15 mm, length 955 mm  |
| 1207695            | NS 35/15 PERF 1155MM        | NS 35 DIN rail, perforated, height 15 mm, length 1155 mm   |
| 1201730            | NS 35/15 PERF 2000MM        | DIN rail, material: Steel, perforated, height 15 mm, width 35 mm, length: 2 m  |
| 1201714            | NS 35/15 UNPERF 2000MM      | DIN rail, material: Steel, unperforated, height 15 mm, width 35 mm, length: 2 m  |
| 1201798            | NS 35/15-2,3 UNPERF 2000MM  | DIN rail, material: Steel, unperforated, 2.3 mm thick, height 15 mm, width 35 mm, length: 2 m  |
| <b>Bridges</b>     |                             |  |
| 3030284            | FBS 2-8                     | Cross connector/bridge, Number of positions: 2, Color: red   |
| 3030297            | FBS 3-8                     | Cross connector/bridge, Number of positions: 3, Color: red   |
| 3030307            | FBS 4-8                     | Cross connector/bridge, Number of positions: 4, Color: red   |
| 3030310            | FBS 5-8                     | Cross connector/bridge, Number of positions: 5, Color: red   |
| 3032470            | FBS 6-8                     | Jumper, Number of positions: 6, Color: red   |

|                     |                        |  |
|---------------------|------------------------|--|
| 3047251             | RB UT 6-(2,5/4)        | Cross connector/bridge, Number of positions: 2, Color: red   |
| <b>General</b>      |                        |  |
| 3047264             | RB UT 6-ST(2,5/4)      | Cross connector/bridge, Number of positions: 2, Color: red   |
| <b>Marking</b>      |                        |  |
| 0811228             | X-PEN 0,35             | Marker pen without ink cartridge, for manual labeling of markers, labeling extremely wipe-proof, line thickness 0.35 mm  |
| 1052015             | ZB 8,LGS:FORTL.ZAHLEN  | Zack strip, 10-section, printed horizontally: with the numbers, 1-10, 11-20 etc. up to 991-1000, color: white  |
| 5060896             | ZB 8/WH-100:UNBEDRUCKT | Zack strip, unprinted: 10-section, for individual labeling with M-PEN, ZB-T or CMS system, large batch, sufficient for labeling 1000 terminal blocks, terminal width: 8.2 mm, color: White |
| 1050512             | ZB 8:SO/CMS            | Zack strip, 10-section, divisible, special printing, marking according to customer requirements  |
| <b>Plug/Adapter</b> |                        |  |
| 3030925             | PAI-4                  | Test adapter, Color: gray  |
| 3031005             | PS-8                   | Test adapter, Color: red   |
| <b>Tools</b>        |                        |  |
| 1205066             | SZS 1,0X4,0            | Screwdriver, bladed, matches all screw terminal blocks with 10 mm <sup>2</sup> and 16 mm <sup>2</sup> connection cross section, blade: 1.0 x 4.0 mm  |

**Diagrams/Drawings**

Circuit diagram



Approbationslogos (EX-Bereich)



UT 6 Order No.: 3044131

<http://eshop.phoenixcontact.de/phoenix/treeViewClick.do?UID=3044131>

---

**Address**

PHOENIX CONTACT Deutschland GmbH  
Flachmarktstr. 8  
32825 Blomberg, Germany  
Phone +49 5235 3 12000  
Fax +49 5235 3 41200  
<http://www.phoenixcontact.de>



© 2010 Phoenix Contact  
Technical modifications reserved;



Компания «ЭлектроПласт» предлагает заключение долгосрочных отношений при поставках импортных электронных компонентов на взаимовыгодных условиях!

Наши преимущества:

- Оперативные поставки широкого спектра электронных компонентов отечественного и импортного производства напрямую от производителей и с крупнейших мировых складов;
- Поставка более 17-ти миллионов наименований электронных компонентов;
- Поставка сложных, дефицитных, либо снятых с производства позиций;
- Оперативные сроки поставки под заказ (от 5 рабочих дней);
- Экспресс доставка в любую точку России;
- Техническая поддержка проекта, помощь в подборе аналогов, поставка прототипов;
- Система менеджмента качества сертифицирована по Международному стандарту ISO 9001;
- Лицензия ФСБ на осуществление работ с использованием сведений, составляющих государственную тайну;
- Поставка специализированных компонентов (Xilinx, Altera, Analog Devices, Intersil, Interpoint, Microsemi, Aeroflex, Peregrine, Syfer, Eurofarad, Texas Instrument, Miteq, Cobham, E2V, MA-COM, Hittite, Mini-Circuits, General Dynamics и др.);

Помимо этого, одним из направлений компании «ЭлектроПласт» является направление «Источники питания». Мы предлагаем Вам помощь Конструкторского отдела:

- Подбор оптимального решения, техническое обоснование при выборе компонента;
- Подбор аналогов;
- Консультации по применению компонента;
- Поставка образцов и прототипов;
- Техническая поддержка проекта;
- Защита от снятия компонента с производства.



#### Как с нами связаться

**Телефон:** 8 (812) 309 58 32 (многоканальный)

**Факс:** 8 (812) 320-02-42

**Электронная почта:** [org@eplast1.ru](mailto:org@eplast1.ru)

**Адрес:** 198099, г. Санкт-Петербург, ул. Калинина, дом 2, корпус 4, литера А.