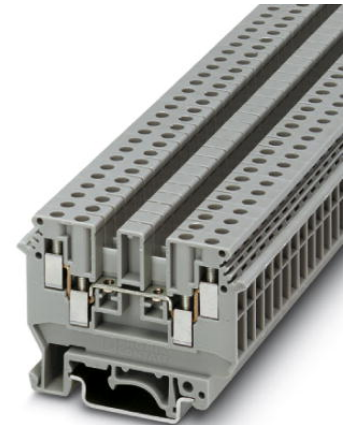


UDK 4 BU

Order No.: 2775090

The illustration shows version UDK 4 in gray

<http://eshop.phoenixcontact.de/phoenix/treeViewClick.do?UID=2775090>

1-level terminal block with double connection on both sides, cross section: 0.2 - 2.5 mm², AWG: 24 - 10, width: 6.2 mm, color: blue

Commercial data

| | |
|--------------------------|--------------------|
| EAN | 4017918068448 |
| Pack | 50 pcs. |
| Customs tariff | 85369010 |
| Weight/Piece | 0.0155 KG |
| Catalog page information | Page 355 (CL-2009) |

Product notes

WEEE/RoHS-compliant since:
01/01/2003



<http://www.download.phoenixcontact.com>
Please note that the data given here has been taken from the online catalog. For comprehensive information and data, please refer to the user documentation. The General Terms and Conditions of Use apply to Internet downloads.

Technical data

General

| | |
|------------------------------------|------|
| Number of levels | 2 |
| Number of connections | 4 |
| Color | blue |
| Insulating material | PA |
| Inflammability class acc. to UL 94 | V2 |

Dimensions

| | |
|------------------|---------|
| Length | 63.5 mm |
| Width | 6.2 mm |
| Height NS 35/7,5 | 47 mm |
| Height NS 35/15 | 54.5 mm |
| Height NS 32 | 52.5 mm |

Technical data

| | |
|----------------------------------|---|
| Rated surge voltage | 8 kV |
| Pollution degree | 3 |
| Surge voltage category | III |
| Insulating material group | I |
| Connection in acc. with standard | IEC 60947-7-1 |
| Nominal current I_N | 32 A (the maximum load current must not be exceeded by the total current of all connected conductors) |
| Nominal voltage U_N | 630 V |

Connection data

| | |
|--|----------------------|
| Conductor cross section solid min. | 0.2 mm ² |
| Conductor cross section solid max. | 6 mm ² |
| Conductor cross section stranded min. | 0.2 mm ² |
| Conductor cross section stranded max. | 4 mm ² |
| Conductor cross section AWG/kcmil min. | 24 |
| Conductor cross section AWG/kcmil max | 10 |
| Conductor cross section stranded, with ferrule without plastic sleeve min. | 0.25 mm ² |
| Conductor cross section stranded, with ferrule without plastic sleeve max. | 4 mm ² |
| Conductor cross section stranded, with ferrule with plastic sleeve min. | 0.25 mm ² |
| Conductor cross section stranded, with ferrule with plastic sleeve max. | 1.5 mm ² |
| 2 conductors with same cross section, solid min. | 0.2 mm ² |
| 2 conductors with same cross section, solid max. | 1 mm ² |
| 2 conductors with same cross section, stranded min. | 0.2 mm ² |
| 2 conductors with same cross section, stranded max. | 1.5 mm ² |

| | |
|---|----------------------|
| 2 conductors with same cross section, stranded, ferrules without plastic sleeve, min. | 0.25 mm ² |
| 2 conductors with same cross section, stranded, ferrules without plastic sleeve, max. | 1.5 mm ² |
| 2 conductors with same cross section, stranded, TWIN ferrules with plastic sleeve, min. | 0.5 mm ² |
| 2 conductors with same cross section, stranded, TWIN ferrules with plastic sleeve, max. | 1 mm ² |
| Cross-section with insertion bridge, solid max. | 2.5 mm ² |
| Cross-section with insertion bridge, stranded max. | 2.5 mm ² |
| Type of connection | Screw connection |
| Stripping length | 8 mm |
| Internal cylindrical gage | A3 |
| Screw thread | M3 |
| Tightening torque, min | 0.5 Nm |
| Tightening torque max | 0.6 Nm |

Certificates / Approvals



Certification

CSA, CUL, DNV, GL, GOST, UL

CSA

| | |
|-----------------------|-------|
| Nominal voltage U_N | 600 V |
| Nominal current I_N | 10 A |
| AWG/kcmil | 22-10 |

CUL

| | |
|-----------------------|-------|
| Nominal voltage U_N | 600 V |
| Nominal current I_N | 5 A |
| AWG/kcmil | 30-10 |

UL

| | |
|-----------------------|-------|
| Nominal voltage U_N | 600 V |
| Nominal current I_N | 30 A |
| AWG/kcmil | 30-10 |

| Accessories | | |
|--------------------|-------------------------------|--|
| Item | Designation | Description |
| Assembly | | |
| 3022218 | CLIPFIX 35 | Snap-on end bracket, for 35 mm NS 35/7.5 or NS 35/15 DIN rail, can be fitted with Zack strip ZB 8 and ZB 8/27, terminal strip marker KLM 2 and KLM, width: 9.5 mm, color: gray |
| 2775113 | D-UDK 4 | End cover, Length: 63.5 mm, Width: 1.5 mm, Color: gray |
| 2775197 | D-UDK 4 BU | End cover, Length: 63.5 mm, Width: 1.5 mm, Color: blue |
| 1201413 | E/UK 1 | End brackets, for supporting the ends of double-level and three-level terminal blocks, width: 10 mm, color: gray |
| 0201595 | FB-150 METER | Cross connection rail, for fixed bridging of identical inputs and outputs, made of Cu, nickel-plated, 1 m long |
| 1201028 | NS 32 AL UNPERF 2000MM | G rail 32 mm (NS 32) |
| 1201280 | NS 32 CU/120QMM UNPERF 2000MM | G-profile DIN rail, deep-drawn, material: Copper, unperforated, height 15 mm, width 32 mm, length 2 m |
| 1201358 | NS 32 CU/35QMM UNPERF 2000MM | G-profile DIN rail, material: Copper, unperforated, height 15 mm, width 32 mm, length 2 m |
| 1201002 | NS 32 PERF 2000MM | G-profile DIN rail, material: Steel, perforated, height 15 mm, width 32 mm, length 2 m |
| 1201015 | NS 32 UNPERF 2000MM | G-profile DIN rail, material: Steel, unperforated, height 15 mm, width 32 mm, length 2 m |
| 0801762 | NS 35/ 7,5 CU UNPERF 2000MM | DIN rail, material: Copper, unperforated, height 7.5 mm, width 35 mm, length: 2 m |
| 0801733 | NS 35/ 7,5 PERF 2000MM | DIN rail, material: Steel, galvanized and passivated with a thick layer, perforated, height 7.5 mm, width 35 mm, length: 2 m |
| 0801681 | NS 35/ 7,5 UNPERF 2000MM | DIN rail, material: Steel, unperforated, height 7.5 mm, width 35 mm, length: 2 m |
| 1201756 | NS 35/15 AL UNPERF 2000MM | DIN rail, deep-drawn, high profile, unperforated, 1.5 mm thick, material: Aluminum, height 15 mm, width 35 mm, length 2 m |
| 1201895 | NS 35/15 CU UNPERF 2000MM | DIN rail, material: Copper, unperforated, 1.5 mm thick, height 15 mm, width 35 mm, length: 2 m |
| 1201730 | NS 35/15 PERF 2000MM | DIN rail, material: Steel, perforated, height 15 mm, width 35 mm, length: 2 m |
| 1201714 | NS 35/15 UNPERF 2000MM | DIN rail, material: Steel, unperforated, height 15 mm, width 35 mm, length: 2 m |
| 1201798 | NS 35/15-2,3 UNPERF 2000MM | DIN rail, material: Steel, unperforated, 2.3 mm thick, height 15 mm, width 35 mm, length: 2 m |
| 2770215 | TS-KK 3 | Separating plate, Color: gray |
| Bridges | | |
| 0201155 | EB 2- 6 | Cross connector/bridge, Number of positions: 2, Color: gray |

| | | |
|---------|-------------|---|
| 0201142 | EB 3- 6 | Cross connector/bridge, Number of positions: 3, Color: gray |
| 0201139 | EB 10- 6 | Cross connector/bridge, Number of positions: 10, Color: gray |
| 0203250 | FBI 10- 6 | Cross connector/bridge, Number of positions: 10, Color: silver |
| 0201650 | FBI 100- 6 | Cross connector/bridge, Number of positions: 100, Color: aluminum |
| 0201867 | FBI 20- 6 | Cross connector/bridge, Number of positions: 20, Color: aluminum |
| 1302338 | IS-K 4 | Bridge bar isolator, Color: gray |
| 0301505 | ISSBI 10- 6 | Switching jumper, Number of positions: 10, Color: silver |
| 0202280 | LB 10-6 BU | Cross connector/bridge, Number of positions: 10, Color: blue |
| 0202358 | LB 10-6 GY | Cross connector/bridge, Number of positions: 10, Color: gray |
| 0202293 | LB 10-6 RD | Cross connector/bridge, Number of positions: 10, Color: red |
| 0202303 | LB 100-6 BU | Cross connector/bridge, Number of positions: 100, Color: blue |
| 0202345 | LB 100-6 GY | Cross connector/bridge, Number of positions: 100, Color: gray |
| 0202316 | LB 100-6 RD | Cross connector/bridge, Number of positions: 100, Color: red |
| 1413230 | SBRN 2-7 | Cross connector/bridge, Color: silver |
| 2303239 | USBR 2-7 | Cross connector/bridge, Color: silver |
| 2305538 | USBRJ 2-7 | Cross connector/bridge, Number of positions: 2, Color: silver |

Marking

| | | |
|---------|------------------|---|
| 1007222 | SBS 6:UNBEDRUCKT | Marker cards for modular terminal blocks, color: white |
| 1004115 | WS 3- 6 | Warning plate, with 2 plastic screws, across 3 terminal blocks, pitch 6 mm |
| 1004209 | WS 4- 6 | Warning plate, with 2 plastic screws, across 4 terminal blocks, pitch 6 mm |
| 1004403 | WS 5- 6 | Warning plate, with 2 plastic screws, across 5 terminal blocks, pitch 6 mm |
| 1050499 | ZB 6:SO/CMS | Zack strip, 10-section, divisible, special printing, marking according to customer requirements |

Plug/Adapter

| | | |
|---------|-------------|---|
| 0309523 | KSS 3- 6 | Short circuit connector, Number of positions: 3, Color: black |
| 0301547 | KSS 6 | Short circuit connector, Number of positions: 2, Color: black |
| 0601292 | PSB 3/10/4 | Female test connector, Color: silver |
| 0201304 | PSBJ 3/13/4 | Female test connector, Color: silver |
| 0201647 | RPS | Reducing plug, Color: gray |

Diagrams/Drawings

Circuit diagram



- 1 = cover
- 2 = fixed bridge, for cross-connections in the terminal center, screw heads with insulating collar
- 3 = fixed bridge, for cross-connections in the terminal center, with crimped-on rollers
- 4 = insertion bridge
- 5 = isolator bridge bar
- 6 = bridge bar isolator
- 7 = switch bar for 2 terminal blocks
- 8 = separating plate

Address

PHOENIX CONTACT Deutschland GmbH
Flachmarktstr. 8
32825 Blomberg, Germany
Phone +49 5235 3 12000
Fax +49 5235 3 41200
<http://www.phoenixcontact.de>



© 2010 Phoenix Contact
Technical modifications reserved;



Компания «ЭлектроПласт» предлагает заключение долгосрочных отношений при поставках импортных электронных компонентов на взаимовыгодных условиях!

Наши преимущества:

- Оперативные поставки широкого спектра электронных компонентов отечественного и импортного производства напрямую от производителей и с крупнейших мировых складов;
- Поставка более 17-ти миллионов наименований электронных компонентов;
- Поставка сложных, дефицитных, либо снятых с производства позиций;
- Оперативные сроки поставки под заказ (от 5 рабочих дней);
- Экспресс доставка в любую точку России;
- Техническая поддержка проекта, помощь в подборе аналогов, поставка прототипов;
- Система менеджмента качества сертифицирована по Международному стандарту ISO 9001;
- Лицензия ФСБ на осуществление работ с использованием сведений, составляющих государственную тайну;
- Поставка специализированных компонентов (Xilinx, Altera, Analog Devices, Intersil, Interpoint, Microsemi, Aeroflex, Peregrine, Syfer, Eurofarad, Texas Instrument, Miteq, Cobham, E2V, MA-COM, Hittite, Mini-Circuits, General Dynamics и др.);

Помимо этого, одним из направлений компании «ЭлектроПласт» является направление «Источники питания». Мы предлагаем Вам помощь Конструкторского отдела:

- Подбор оптимального решения, техническое обоснование при выборе компонента;
- Подбор аналогов;
- Консультации по применению компонента;
- Поставка образцов и прототипов;
- Техническая поддержка проекта;
- Защита от снятия компонента с производства.



Как с нами связаться

Телефон: 8 (812) 309 58 32 (многоканальный)

Факс: 8 (812) 320-02-42

Электронная почта: org@eplast1.ru

Адрес: 198099, г. Санкт-Петербург, ул. Калинина, дом 2, корпус 4, литера А.