

## MAX14850PMB1 Peripheral Module

### General Description

The MAX14850PMB1 peripheral module utilizes the MAX14850 digital isolator to isolate another SPI- or UART-based module from any host system that utilizes Pmod™-compatible expansion ports configurable for either a UART or SPI interface. This peripheral module is first plugged into the host Pmod port. Another UART- or SPI-based module plugged into the 12-pin Pmod-compatible connector on this peripheral module is galvanically isolated from the host and referenced to a secondary power supply connected to this peripheral module.

The IC is a 6-channel digital isolator utilizing Maxim's proprietary process technology, whose monolithic design provides a compact and low-cost transfer of digital signals between circuits with different power domains. Of the six total channels, the four unidirectional channels are each capable of DC to 50Mbps, with two of the four channels passing data across the isolation barrier in each direction. The two bidirectional channels are open drain and each is capable of data rates from DC to 2Mbps.

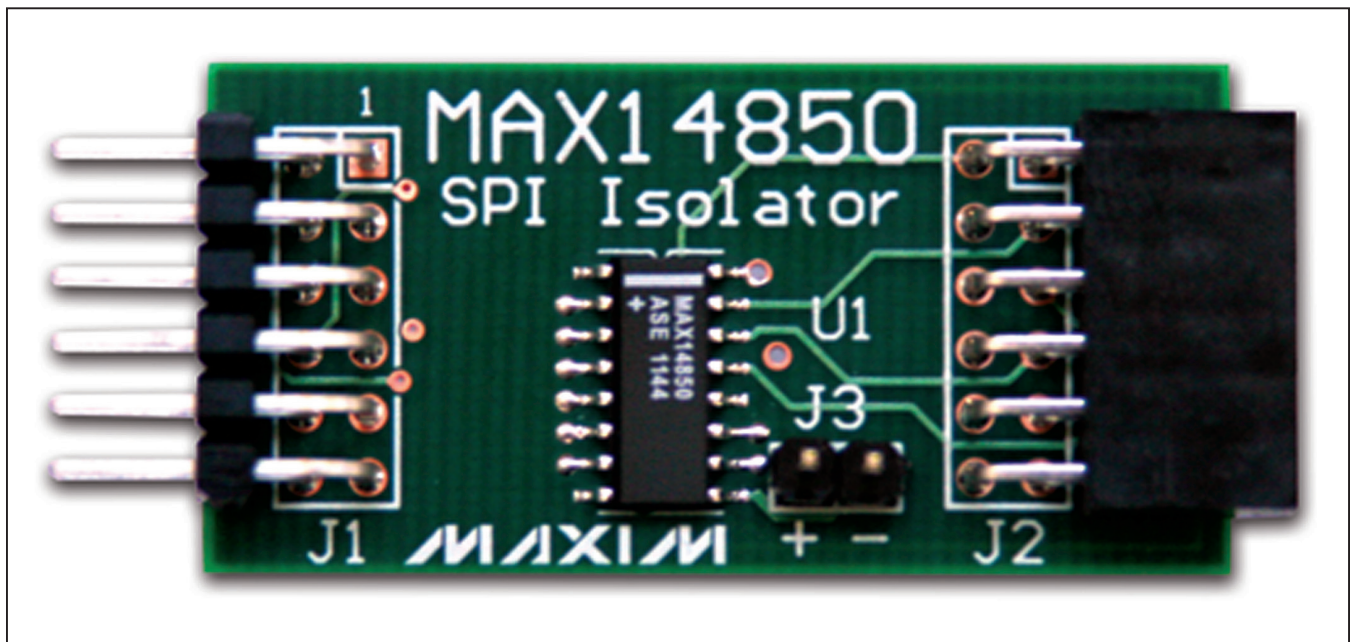
Refer to the MAX14850 IC data sheet for detailed information regarding operation of the IC.

### Features

- ◆ Isolates SPI- or UART-Based Pmod-Compatible Modules from the Host System
- ◆ Data Rates from 2Mbps to 20Mbps or Greater, Depending on Configuration
- ◆ 2-Pin Header to Connect External Voltage for Isolated Module
- ◆ 600V<sub>RMS</sub> Isolation for 60s
- ◆ Isolates Four SPI or UART Signals and Two Control Signals
- ◆ Short-Circuit Protection on Unidirectional Outputs
- ◆ 12-Pin Pmod-Compatible Male Connector to Host
- ◆ 12-Pin Pmod-Compatible Female Connection for Module to be Isolated
- ◆ RoHS Compliant
- ◆ Proven PCB Layout
- ◆ Fully Assembled and Tested

*Ordering Information* appears at end of data sheet.

### MAX14850PMB1 Peripheral Module



*Pmod is a trademark of Digilent Inc.*

# MAX14850PMB1 Peripheral Module

## Component List

DESIGNATION	QTY	DESCRIPTION
C1, C2	2	0.1 $\mu$ F $\pm$ 10%, 16V X7R ceramic capacitors (0603) Murata GRM188R71C104KA01D
C3	1	1 $\mu$ F $\pm$ 10%, 10V X7R ceramic capacitor (0603) TDK C1608X7R1A105K
J1	1	12-pin (2 x 6) right-angle male header

DESIGNATION	QTY	DESCRIPTION
J2	1	12-pin (2 x 6) right-angle female header
J3	1	2-pin straight male header
R1–R6	6	150 $\Omega$ $\pm$ 5% resistors (0603)
R7–R10	4	4.7k $\Omega$ $\pm$ 5% resistors (0603)
U1	1	6-channel digital isolator (16 SO) Maxim MAX14850ASE+
—	1	PCB: EPCB14850PM1

## Component Suppliers

SUPPLIER	PHONE	WEBSITE
Murata Electronics North America, Inc.	770-436-1300	www.murata-northamerica.com
TDK Corp.	847-803-6100	www.component.tdk.com

**Note:** Indicate that you are using the MAX14850PMB1 when contacting these component suppliers.

## Detailed Description

### UART Interface

The MAX14850PMB1 peripheral module can interface to the host by plugging directly into a Pmod-compatible port (configured for SPI or UART) through connector J1. See Table 1.

Connector J2 provides the galvanically isolated connection to another peripheral module. Note that even though the pinout numbering is different than J1, the signals from the top row of pins on J1 are passed through to the top row of pins on J2. See Table 2.

Connector J3 provides power from the 2nd power domain to the isolated side of the IC and the isolated Pmod.

### Software and FPGA Code

Example software and drivers are available that execute directly without modification on several FPGA development boards that support an integrated or synthesized microprocessor. These boards include the Digilent Nexys 3, Avnet LX9, and Avnet ZEDBoard, although other platforms can be added over time. Maxim provides complete Xilinx ISE projects containing HDL, Platform Studio, and SDK projects. In addition, a synthesized bit stream, ready for FPGA download, is provided for the demonstration application.

The software project (for the SDK) contains several source files intended to accelerate customer evaluation and design. These include a base application (maximModules.c) that demonstrates module functional-

**Table 1. Connector J1 (with SPI/UART Peripheral Attached to J2)**

PIN	SIGNAL	DESCRIPTION
1	SS_CTS	Serial select/clear to send
2	MOSI_TXD	Master-out slave input/host transmit
3	MISO_RXD	Master-in slave output/host receive
4	SCK_RTS	Serial clock/ready to send
5	GND	Ground
6	VCC	Power supply
7	SPAREIN	Spare input from Pmod to host
8	N.C.	Not connected
9	N.C.	Not connected
10	SPAREIO	Spare input/output
11	GND	Ground
12	VCC	Power supply

ity, and uses an API interface (maximDeviceSpecificUtilities.c) to set and access Maxim device functions within a specific module.

The source code is written in standard ANSI C format, and all API documentation including theory/operation, register description, and function prototypes are documented in the API interface file (maximDeviceSpecificUtilities.h & .c).

The complete software kit is available for download at [www.maxim-ic.com](http://www.maxim-ic.com). Quick start instructions are also available as a separate document.

# MAX14850PMB1 Peripheral Module

**Table 2. Connector J2**

PIN	SIGNAL	DESCRIPTION
1	O_SPAREIN	Spare input from Pmod to host
2	N.C.	Not connected
3	N.C.	Not connected
4	O_SPAREIO	Spare input/output
5	O_GND	Ground from 2nd power domain (supplied through J3)
6	O_VCC	Power from 2nd power domain (supplied through J3)
7	O_SS_CTS	Serial select/clear to send
8	O_MOSI_TXD	Master-out slave input/host transmit
9	O_MISO_RXD	Master-in slave output/host receive
10	O_SCK_RTS	Serial clock/ready to send
11	O_GND	Ground from 2nd power domain (supplied through J3)
12	O_VCC	Power from 2nd power domain (supplied through J3)

**Table 3. Connector J3**

PIN	SIGNAL	DESCRIPTION
1	O_VCC	VCC for the 2nd power domain (up to 600VRMS separation)
2	O_GND	Ground for the 2nd power domain

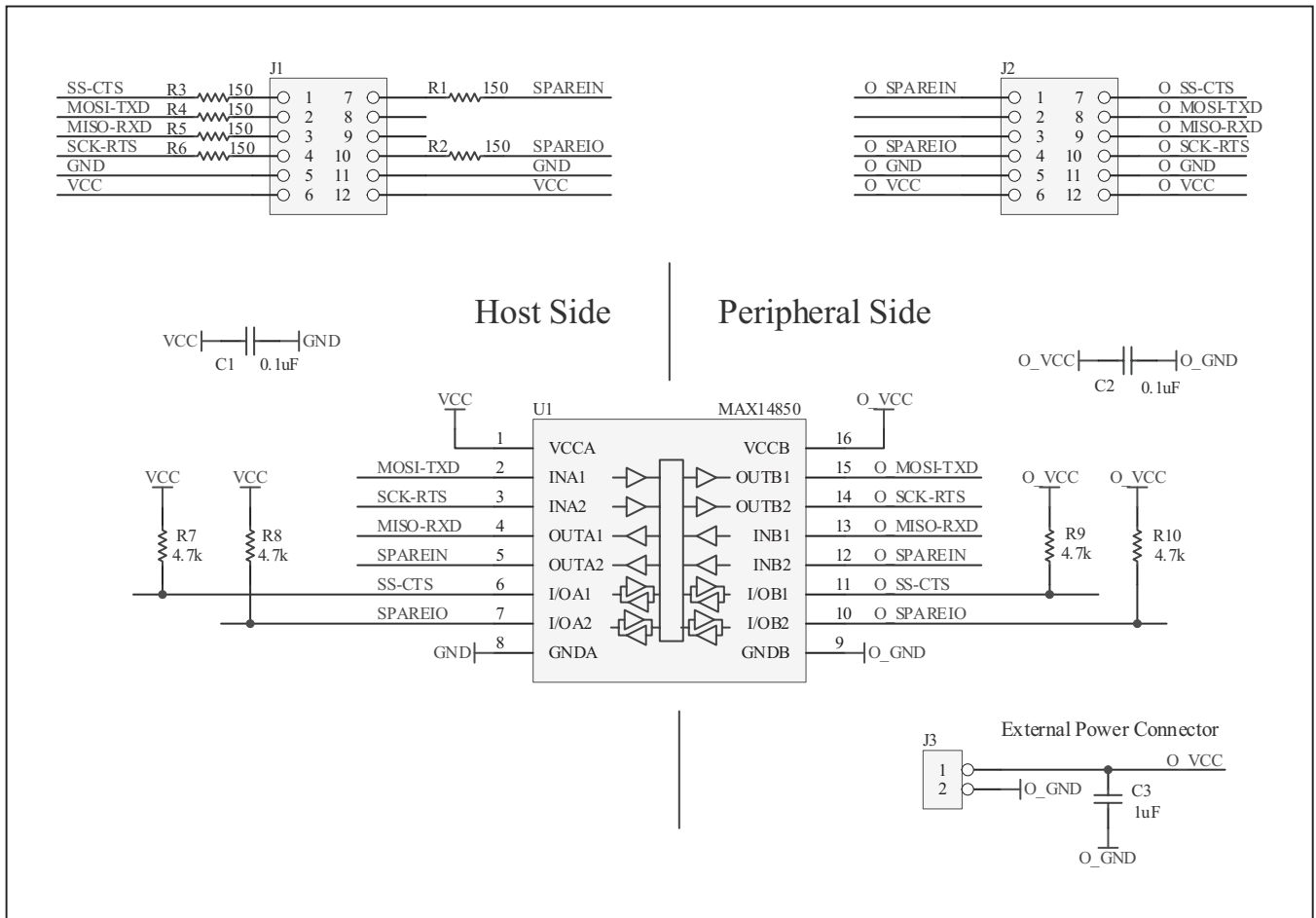


Figure 1. MAX14850PMB1 Peripheral Module Schematic

# MAX14850PMB1 Peripheral Module

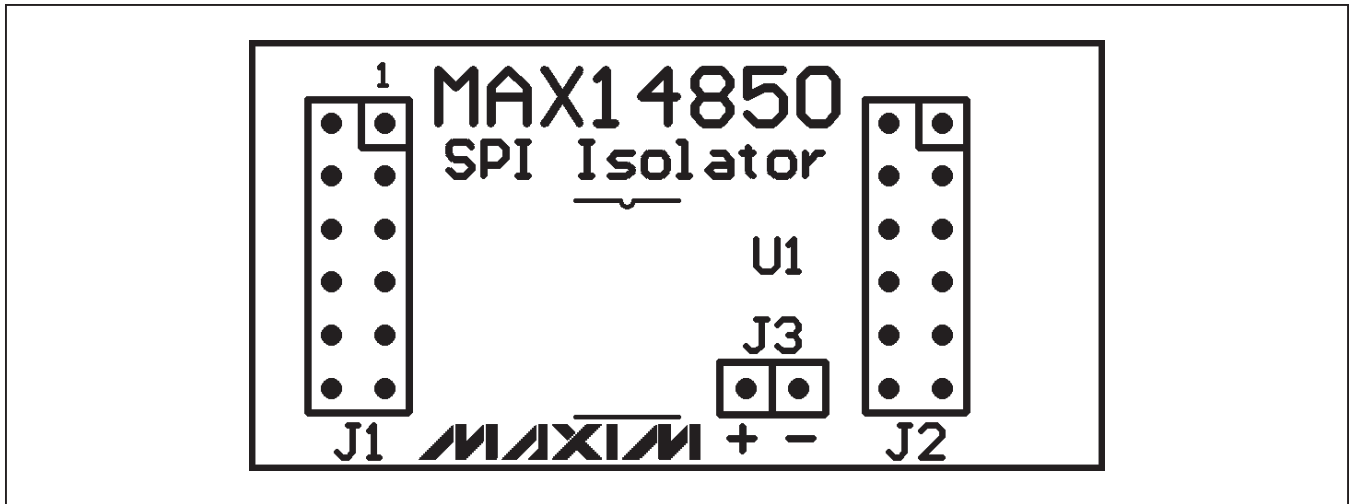


Figure 2. MAX14850PMB1 Peripheral Module Component Placement Guide—Component Side

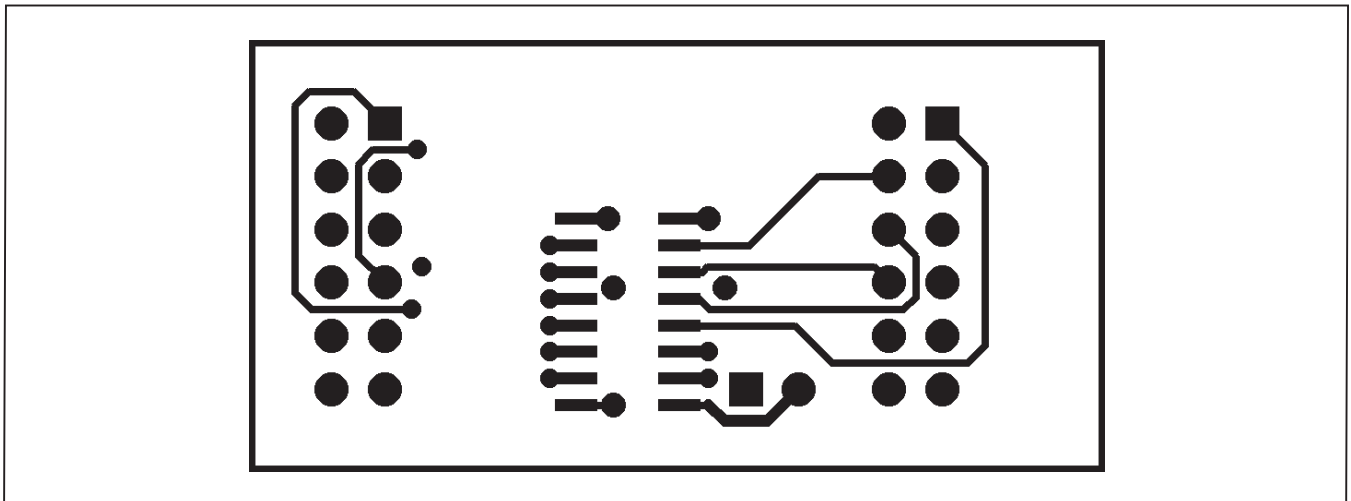


Figure 3. MAX14850PMB1 Peripheral Module PCB Layout—Component Side

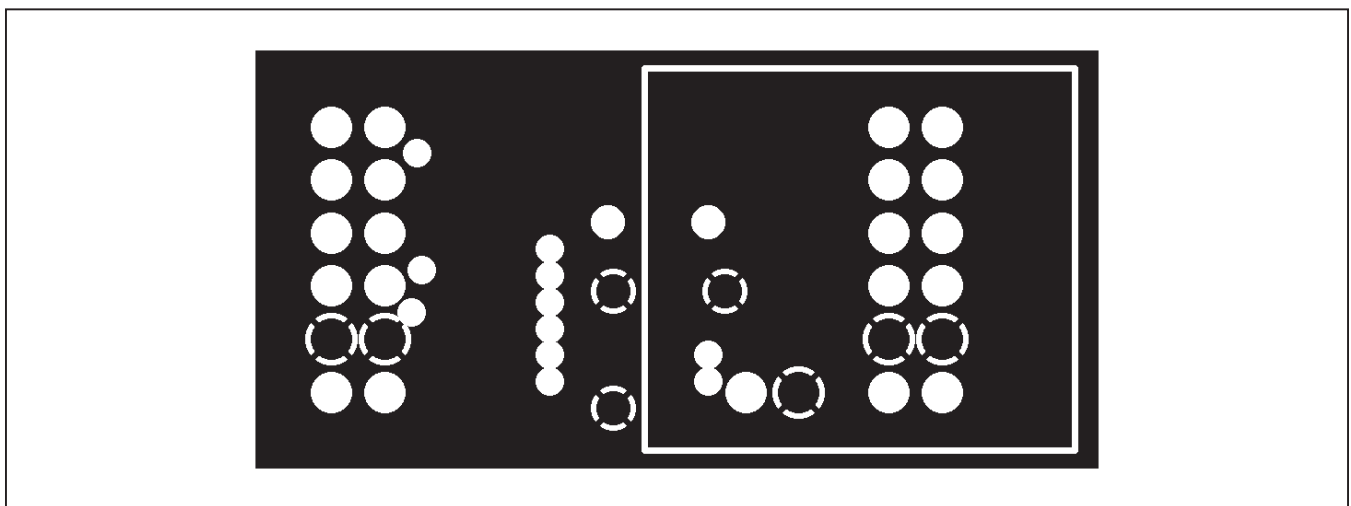


Figure 4. MAX14850PMB1 Peripheral Module PCB Layout—Inner Layer 1 (Ground)

# MAX14850PMB1 Peripheral Module

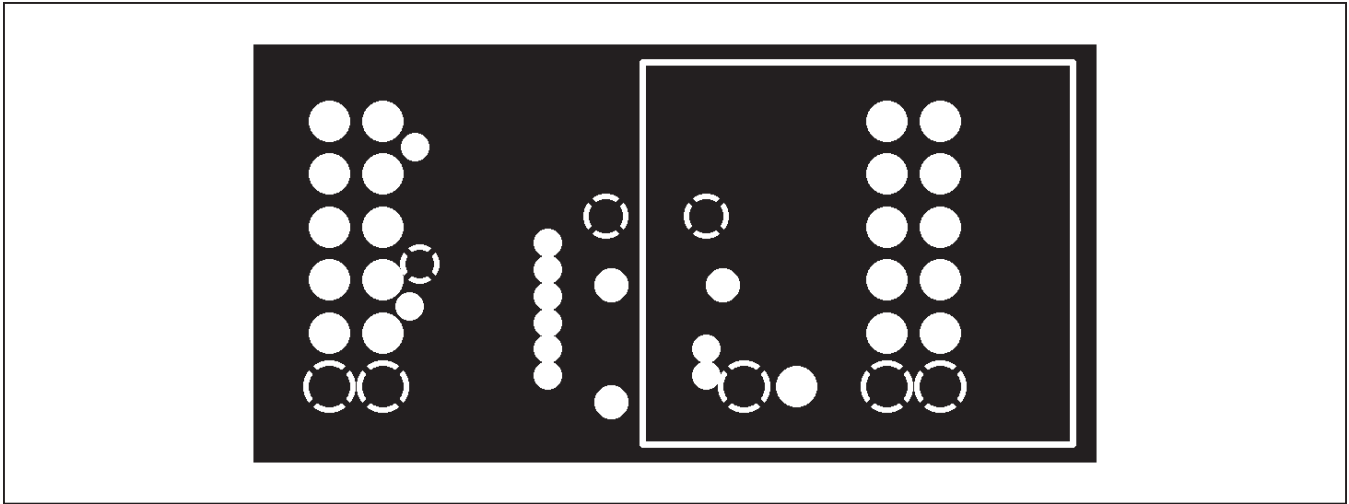


Figure 5. MAX14850PMB1 Peripheral Module PCB Layout—Inner Layer 2 (Power)

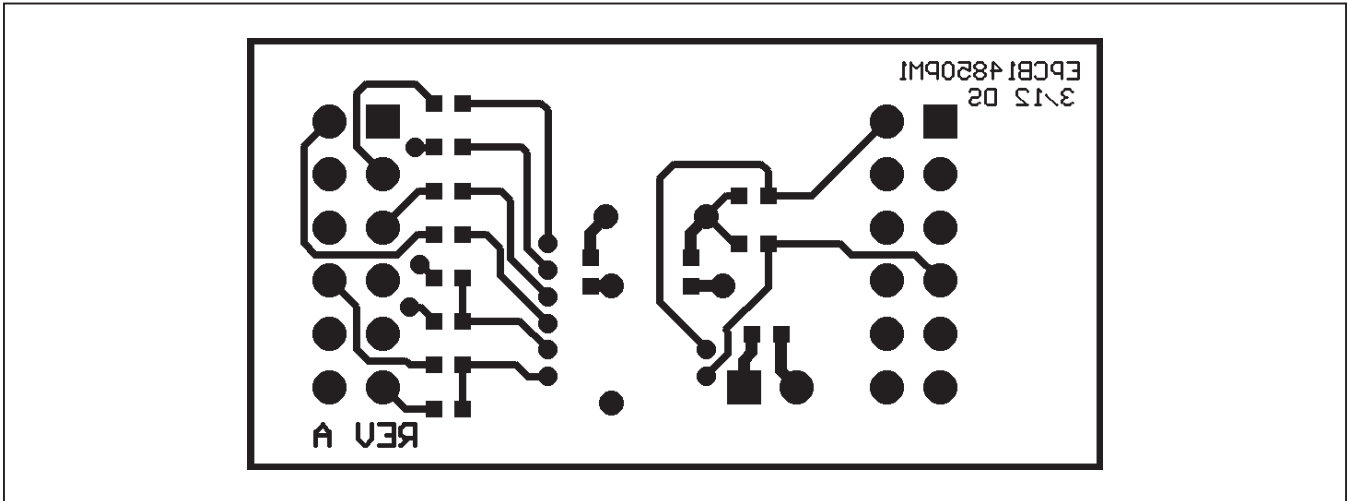


Figure 6. MAX14850PMB1 Peripheral Module PCB Layout—Solder Side

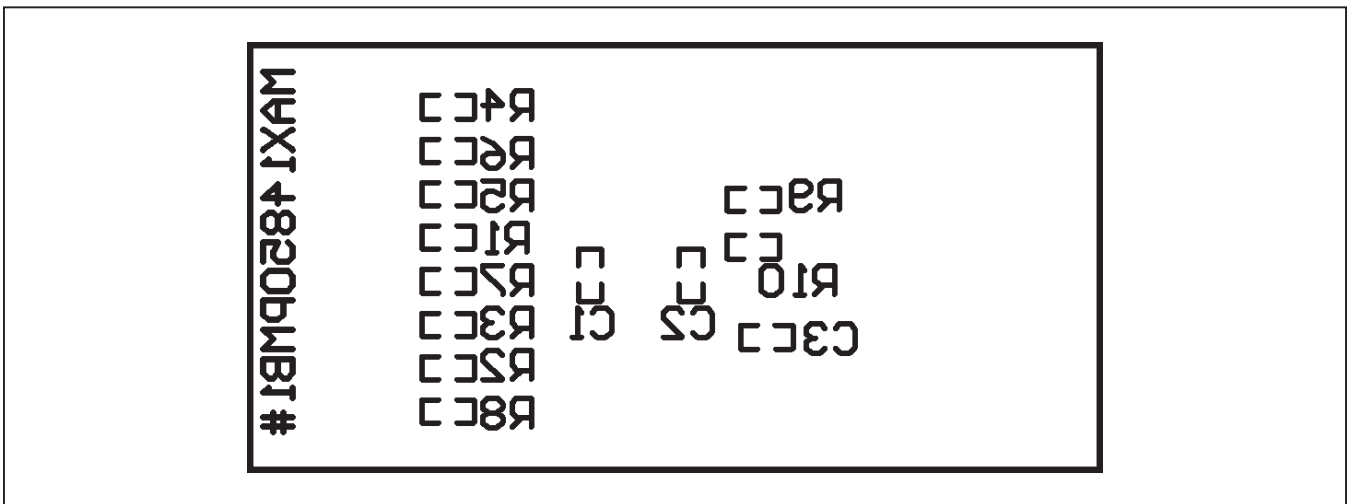


Figure 7. MAX14850PMB1 Peripheral Module Component Placement Guide—Solder Side

# MAX14850PMB1 Peripheral Module

## ***Ordering Information***

---

<b>PART</b>	<b>TYPE</b>
MAX14850PMB1#	Peripheral Module

#Denotes RoHS compliant.

# MAX14850PMB1 Peripheral Module

## Revision History

REVISION NUMBER	REVISION DATE	DESCRIPTION	PAGES CHANGED
0	5/12	Initial release	—

Maxim cannot assume responsibility for use of any circuitry other than circuitry entirely embodied in a Maxim product. No circuit patent licenses are implied. Maxim reserves the right to change the circuitry and specifications without notice at any time.

**Maxim Integrated Products, 120 San Gabriel Drive, Sunnyvale, CA 94086 408-737-7600 \_\_\_\_\_ 7**



Компания «ЭлектроПласт» предлагает заключение долгосрочных отношений при поставках импортных электронных компонентов на взаимовыгодных условиях!

Наши преимущества:

- Оперативные поставки широкого спектра электронных компонентов отечественного и импортного производства напрямую от производителей и с крупнейших мировых складов;
- Поставка более 17-ти миллионов наименований электронных компонентов;
- Поставка сложных, дефицитных, либо снятых с производства позиций;
- Оперативные сроки поставки под заказ (от 5 рабочих дней);
- Экспресс доставка в любую точку России;
- Техническая поддержка проекта, помощь в подборе аналогов, поставка прототипов;
- Система менеджмента качества сертифицирована по Международному стандарту ISO 9001;
- Лицензия ФСБ на осуществление работ с использованием сведений, составляющих государственную тайну;
- Поставка специализированных компонентов (Xilinx, Altera, Analog Devices, Intersil, Interpoint, Microsemi, Aeroflex, Peregrine, Syfer, Eurofarad, Texas Instrument, Miteq, Cobham, E2V, MA-COM, Hittite, Mini-Circuits, General Dynamics и др.);

Помимо этого, одним из направлений компании «ЭлектроПласт» является направление «Источники питания». Мы предлагаем Вам помощь Конструкторского отдела:

- Подбор оптимального решения, техническое обоснование при выборе компонента;
- Подбор аналогов;
- Консультации по применению компонента;
- Поставка образцов и прототипов;
- Техническая поддержка проекта;
- Защита от снятия компонента с производства.



#### Как с нами связаться

**Телефон:** 8 (812) 309 58 32 (многоканальный)

**Факс:** 8 (812) 320-02-42

**Электронная почта:** [org@eplast1.ru](mailto:org@eplast1.ru)

**Адрес:** 198099, г. Санкт-Петербург, ул. Калинина, дом 2, корпус 4, литера А.