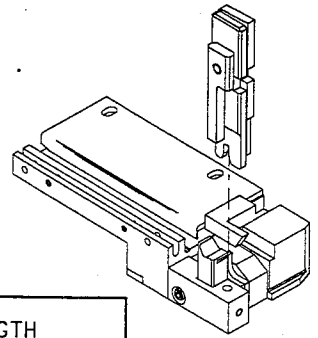




APPLICATION TOOLING TERMINATOR DIE SPECIFICATION SHEET



TERMINAL SPECIFICATION

TERMINAL SERIES	WIRE SIZE		INSULATION DIAMETER		STRIP LENGTH	
	MIN	MAX	ENGLISH	(METRIC)	ENGLISH	(METRIC)
43375-1001	18	14	.120 - .180	(3.05 - 4.57)	.156 - .218	(3.96 - 5.54)
			-	(-)	-	(-)
			-	(-)	-	(-)
			-	(-)	-	(-)
			-	(-)	-	(-)
			-	(-)	-	(-)
			-	(-)	-	(-)

TOOLING INFORMATION

ITEM	ORDER NO.	SIZE	ENG. NO.	DESCRIPTION	REQ'D
4	634430002	B	634430002	FRONT CUT-OFF PLUNGER	1
6	634442513	B	634442513	CONDUCTOR PUNCH	1
7	634452562	B	634452562	CONDUCTOR ANVIL	1
8	634464817	B	634464817	INSULATION PUNCH	1
9	634454814	B	634454814	INSULATION ANVIL	1
***	6384052-70		6384052-70	TOOL KIT (ALL THE ABOVE ITEMS)	1

CRIMP SPECIFICATION

WIRE AWG	CRIMP HEIGHT		CRIMP WIDTH (REF.)		PULL FORCE MINIMUM	
	ENGLISH	(METRIC)	ENGLISH	(METRIC)	LBS.	(N)
14	.065 - .069	(1.65 - 1.75)	.098	(2.50)	60	(266)
16	.058 - .062	(1.47 - 1.57)	.098	(2.50)	30	(133)
18	.053 - .056	(1.35 - 1.43)	.098	(2.50)	20	(88.9)
	-	(-)	()	()	()	()
DBL 18	.058 - .062	(1.47 - 1.57)	.098	(2.50)	20	(88.9)

NOTES:

1. WE RECOMMEND AN EXTRA SET OF PERISHABLE TOOLING BE MAINTAINED IN YOUR FACTORY.
2. VERIFY TOOLING ALIGNMENT BY MANUALLY CYCLING THE PRESS AND DIE BEFORE CRIMPING UNDERPOWER. CHECK THAT ALL SCREWS ARE TIGHT.
3. SLUGS, TERMINALS, DIRT AND OIL SHOULD BE KEPT CLEAR OF WORK AREA.
4. CRIMP HEIGHT MAY VARY DEPENDING ON STYLE AND WIRE TYPE.
5. TO PREVENT INJURY - NEVER OPERATE THIS TOOL WITHOUT THE GUARDING SUPPLIED WITH THE PRESS IN PLACE.

DD-MMM-YYY
 HH:MM
 WORK AREA
 REV. BY: JUS
 ECN: 009
 02-0487 KDP
 REVISIONS
 MFG. SH. RE
 LTR.

DIMENSIONS SHOWN (METRIC) INCH

UNLESS OTHERWISE SPECIFIED
TOLERANCES: ANGULAR ± 1/2°

	INCH	METRIC
3 PLACE	± ---	---
2 PLACE	± ---	± ---
1 PLACE	---	± ---

DRAFT WHERE APPLICABLE MUST
REMAIN WITHIN DIMENSIONS

▽ =

▼ =

REVISE ONLY ON CAD SYSTEM

TITLE

TERMINATOR DIE ASSEMBLY

MOLEX

MOLEX INCORPORATED
LISLE, ILL. 60532 U.S.A.

SHEET NO.

DATE

1 of 4 03/07/95

PART NO.

DRWG. NO.

6384052-00

6384052-00

FILE NAME
6384052
580

THIS DRAWING CONTAINS INFORMATION THAT IS PROPRIETARY TO
MOLEX INC. AND SHOULD NOT BE USED WITHOUT WRITTEN PERMISSION.

DIV. SIZE
AT A

A

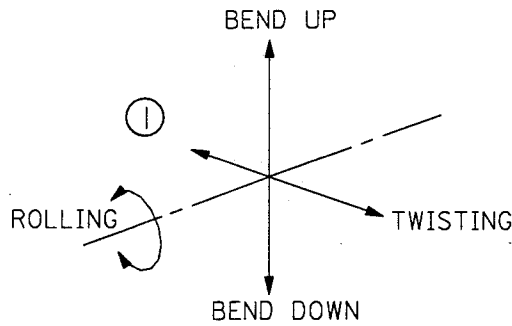
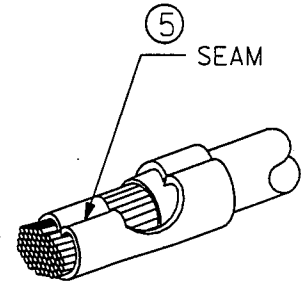
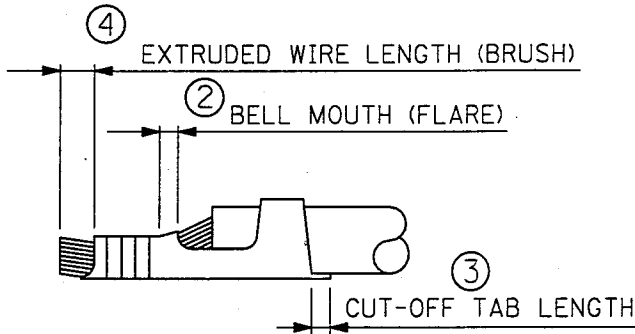
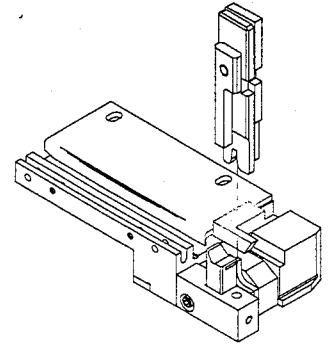
B

C

D



APPLICATION TOOLING TERMINATOR DIE SPECIFICATION SHEET



CRIMP SPECIFICATION

NO. OF FIG.	ITEM	REQUIREMENT
1	BEND UP	5° MAX
	BEND DOWN	2° MAX
	TWISTING	5° MAX
	ROLLING	5° MAX
2	BELL MOUTH (FLARE)	0.2 - 0.5mm
3	CUT-OFF TAB LENGTH	0.2mm MAX
4	EXTRUDED WIRE LENGTH- (BRUSH)	0.0 - 0.5 mm
5	SEAM	SEAM SHALL NOT BE OPENED AND
		NO WIRE ALLOWED OUT OF THE
		CRIMPING AREA.

DD-MMM-YY
HH:MM

REV. BDL
ECN # 105
02-01-97 KDP

WORK AREA

REVISIONS

MFG. SH. C

LTR.

DIMENSIONS SHOWN (METRIC) INCH

UNLESS OTHERWISE SPECIFIED
TOLERANCES: ANGULAR ± 1/2°

	INCH	METRIC
3 PLACE	± ---	---
2 PLACE	± ---	± ---
1 PLACE	---	± ---

DRAFT WHERE APPLICABLE MUST
REMAIN WITHIN DIMENSIONS

DRWG. BY SMT
CHK'D. BY VS
APP'D. BY
SCALE / : /

▽ =

TITLE

REVISE ONLY ON CAD SYSTEM

TERMINATOR DIE ASSEMBLY



MOLEX INCORPORATED
LISLE, ILL. 60532 U.S.A.

SHEET NO.

DATE

2 of 4 03/07/95

PART NO.

DRWG. NO.

6384052-00

6384052-00

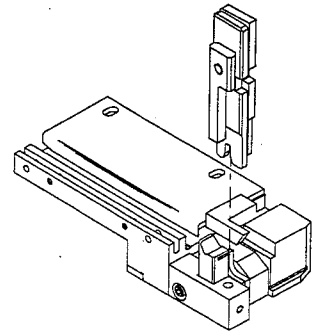
FILE NAME
6384052
S81

THIS DRAWING CONTAINS INFORMATION THAT IS PROPRIETARY TO
MOLEX INC. AND SHOULD NOT BE USED WITHOUT WRITTEN PERMISSION.

DIV. AT
SIZE A



APPLICATION TOOLING TERMINATOR DIE SPECIFICATION SHEET



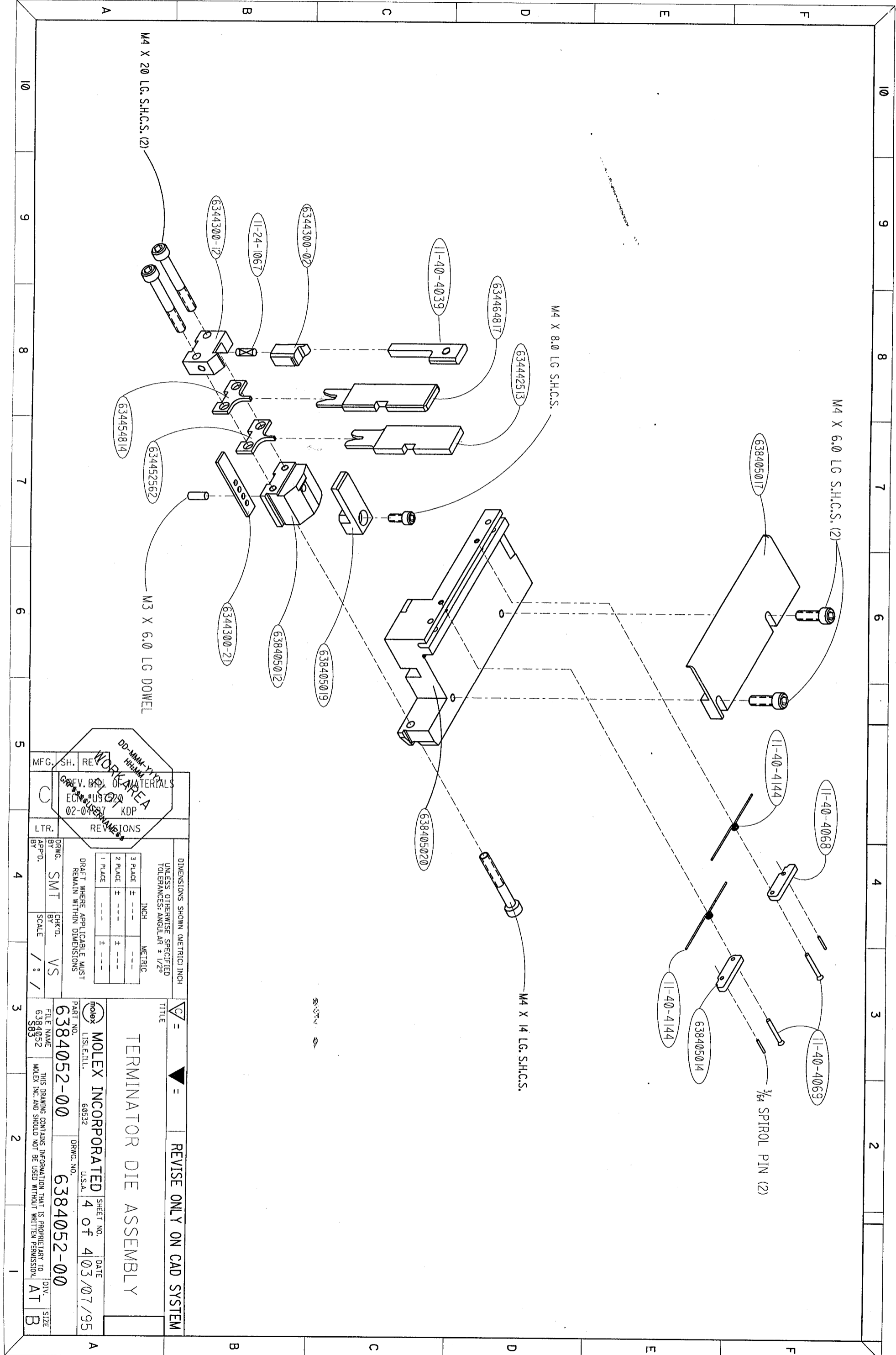
TOOLING INFORMATION

ITEM	ORDER NO.	SIZE	ENG. NO.	DESCRIPTION	REQ'D
4	634430002	B	634430002	FRONT CUT-OFF PLUNGER	1
6	634442513	B	634442513	CONDUCTOR PUNCH	1
7	634452562	B	634452562	CONDUCTOR ANVIL	1
8	634464817	B	634464817	INSULATION PUNCH	1
9	634454814	B	634454814	INSULATION ANVIL	1
***	6384052-70		6384052-70	TOOL KIT (ALL THE ABOVE ITEMS)	1

TERMINATOR ASSEMBLY - PARTS LIST

ITEM	ORDER NO.	SIZE	ENG. NO.	DESCRIPTION	REQ'D
5	634430012	B	634430012	CUT-OFF PLUNGER RETAINER	1
10	11-40-4039	B	8302-5	PLUNGER STRIKER	1
11	634430021	B	634430021	MOUNTING KEY	1
12	638405012	B	638405012	ANVIL MOUNT	1
13	11-40-4068	B	8302-102	DRAG FINGER (L.H.)	1
14	638405014	B	638405014	DRAG FINGER (R.H.)	1
15					
16					
17	638405017	B	638405017	COVER	1
18	11-24-1067	A	4996-4	CUT-OFF PLUNGER SPRING	1
19	638405019	B	638405019	WIRE STOP	1
20	638405020	C	638405020	TERMINAL TRACK	1
21					
22	11-40-4144	B	8302-110	TORSION SPRING, DRAG FINGER	2
23					
24	11-40-4069	B	8302-103	PIVOT PIN	2
25					
26					
27					
28					
29					

<p>DD-MMM-YY HP/EM</p> <p>REV. BDL OF MATERIALS ECON #10909 02-04897 KDP</p> <p>WORK AREA</p>	DIMENSIONS SHOWN (METRIC) INCH		▽ =	▼ =	REVISE ONLY ON CAD SYSTEM												
	UNLESS OTHERWISE SPECIFIED TOLERANCES: ANGULAR ± 1/2°		TITLE		TERMINATOR DIE ASSEMBLY												
	<table border="1"> <thead> <tr> <th></th> <th>INCH</th> <th>METRIC</th> </tr> </thead> <tbody> <tr> <td>3 PLACE</td> <td>= ---</td> <td>---</td> </tr> <tr> <td>2 PLACE</td> <td>= ---</td> <td>± ---</td> </tr> <tr> <td>1 PLACE</td> <td>---</td> <td>± ---</td> </tr> </tbody> </table>			INCH		METRIC	3 PLACE	= ---	---	2 PLACE	= ---	± ---	1 PLACE	---	± ---	MOLEX INCORPORATED	
		INCH	METRIC														
3 PLACE	= ---	---															
2 PLACE	= ---	± ---															
1 PLACE	---	± ---															
DRAFT WHERE APPLICABLE MUST REMAIN WITHIN DIMENSIONS		LISLE, ILL. 60532 U.S.A.		3 of 4 03/07/95													
MFG. SH.	LTR.	DRWG. BY SMT	CHK'D. BY VS	PART NO. 6384052-00	DRWG. NO. 6384052-00												
		APP'D. BY	SCALE / : /	FILE NAME 6384052-00	THIS DRAWING CONTAINS INFORMATION THAT IS PROPRIETARY TO MOLEX INC. AND SHOULD NOT BE USED WITHOUT WRITTEN PERMISSION.												
				82	DIV. AT												
					SIZE A												



WORK AREA
 DD-MMM-YYYY
 HH:MM
 REV. BY OF MATERIALS
 ECN # US 02
 02-0487 KDP

REVISIONS

NO.	DESCRIPTION	DATE
1	PLACE	
2	PLACE	
3	PLACE	

DRAFT WHERE APPLICABLE MUST REMAIN WITHIN DIMENSIONS

DIMENSIONS SHOWN (METRIC) INCH
 UNLESS OTHERWISE SPECIFIED
 TOLERANCES: ANGULAR ± 1/2°

INCH	METRIC
± .005	± .127
± .010	± .254
± .015	± .381
± .020	± .508
± .030	± .762
± .040	± 1.016
± .050	± 1.270
± .060	± 1.524
± .070	± 1.778
± .080	± 2.032
± .090	± 2.286
± .100	± 2.540

TERMINATOR DIE ASSEMBLY

REVISE ONLY ON CAD SYSTEM

MOLEX INCORPORATED U.S.A.
 Lisle, Ill. 60532

PART NO. 6384052-00
 DRWG. NO. 6384052-00

FILE NAME 6384052
 APPD. 383

SHEET NO. 4 OF 4
 DATE 03/07/95

THIS DRAWING CONTAINS INFORMATION THAT IS PROPRIETARY TO MOLEX INC. AND SHOULD NOT BE USED WITHOUT WRITTEN PERMISSION.

DRW. BY SMT
 APPD. BY
 CHK'D. VS
 SCALE / : /

SIZE AT B

CRIMP



Компания «ЭлектроПласт» предлагает заключение долгосрочных отношений при поставках импортных электронных компонентов на взаимовыгодных условиях!

Наши преимущества:

- Оперативные поставки широкого спектра электронных компонентов отечественного и импортного производства напрямую от производителей и с крупнейших мировых складов;
- Поставка более 17-ти миллионов наименований электронных компонентов;
- Поставка сложных, дефицитных, либо снятых с производства позиций;
- Оперативные сроки поставки под заказ (от 5 рабочих дней);
- Экспресс доставка в любую точку России;
- Техническая поддержка проекта, помощь в подборе аналогов, поставка прототипов;
- Система менеджмента качества сертифицирована по Международному стандарту ISO 9001;
- Лицензия ФСБ на осуществление работ с использованием сведений, составляющих государственную тайну;
- Поставка специализированных компонентов (Xilinx, Altera, Analog Devices, Intersil, Interpoint, Microsemi, Aeroflex, Peregrine, Syfer, Eurofarad, Texas Instrument, Miteq, Cobham, E2V, MA-COM, Hittite, Mini-Circuits, General Dynamics и др.);

Помимо этого, одним из направлений компании «ЭлектроПласт» является направление «Источники питания». Мы предлагаем Вам помощь Конструкторского отдела:

- Подбор оптимального решения, техническое обоснование при выборе компонента;
- Подбор аналогов;
- Консультации по применению компонента;
- Поставка образцов и прототипов;
- Техническая поддержка проекта;
- Защита от снятия компонента с производства.



Как с нами связаться

Телефон: 8 (812) 309 58 32 (многоканальный)

Факс: 8 (812) 320-02-42

Электронная почта: org@eplast1.ru

Адрес: 198099, г. Санкт-Петербург, ул. Калинина, дом 2, корпус 4, литера А.