

PART NUMBER CREATOR

for Combination with no signal contacts

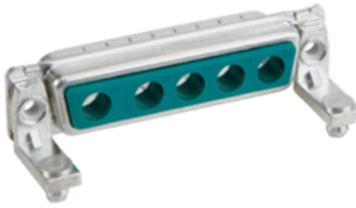
Arrangements which accept only the #8 sized contacts are: **2W2C, 3W3, 3W3C, 5W5 and 8W8**

The available #8 size contacts include:

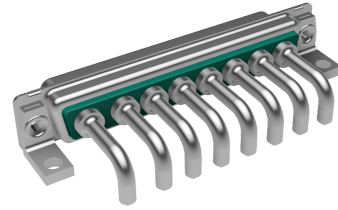
- Power with current ratings from 10 thru 40 amps
- Coax in 50 or 75 ohms
- High Voltage with plastic bodies for ratings up to 2,8 kV

The connectors are available:

with NO contacts at all



factory pre-loaded



Included configurations are:

- No hardware, flange has thru holes, typically used in a hood for the cable end
- Flange threads in 4-40 or M3
- Standoffs for straight PCB mounting with or without boardlock clips
- Right angle bracket with mounting hole locations in accordance with the footprint chosen

The Part Number Creator for these arrangements includes over 2500 choices. Configurations and hardware choices are all "coded" using the Part Number Creator.

Here are some examples of "coding" for some popular ones, to help you to create your own:

1. Please note that some hardware choices are optimized for a specific PCB thickness
2. Power and Coax Contacts are available in 2 quality classes

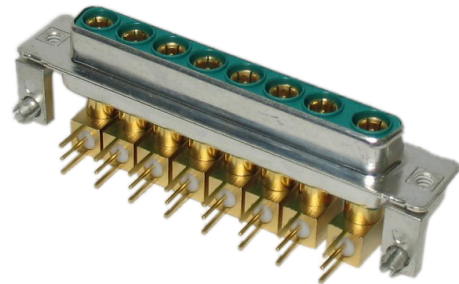
Example: 2W2 female, with 20 amp solder cup for a cable end:

302W2CSXX42A10X



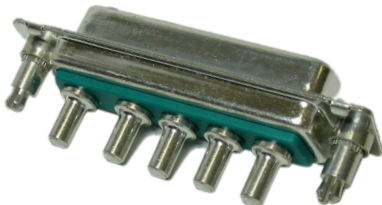
Example: 8W8 female, right angle with coax contacts, brackets with boardlocks:

3008W8SXX88N40X



Example: 5W5 straight, PCB power contacts, standoffs:

3005W5SXX51E20X



PART NUMBER CREATOR

for Combination with no signal contacts

3 003W3 S X X 6 1 A 1 O X

Product Line

3	= Shell steel tin plated
1	= Brass tin plated*
5	= Shell yellow chromated* (not RoHS compliant)
A	= Stainless steel*

*on request

Shell size and design

1	= 2W2C
2	= 3W3, 3W3C
3	= 5W5
4	= 8W8

Empty positions ADD „0“ = 003W3

Contact type

P	= Plug connector
S	= Socket connector

X = Crimp and 3W3, 5W5, 8W8, 2W2C, 3W3C (no contacts are supplied with the connector) *on request

Termination only for no SIGNAL contacts

X	= 3W3, 5W5, 8W8, 2W2C, 3W3C
---	-----------------------------

Termination for HIGH POWER- or COAXIAL contacts

Quality class 3 / Quality class 1	Quality class 3 / Quality class 1	Quality class 3 / Quality class 1
C1 = Solder/Crimp angled 10 A	59 / 55 = Solder pin, angled 15 A	H2 / 88 = 3 Solder pins angled 75 Ω
C2 = Solder/Crimp angled 20 A	73 / 56 = Solder pin, angled 20 A	H3 / 89 = 3 Solder pins angled 75 Ω
C3 = Solder/Crimp angled 30 A	74 / 57 = Solder pin, angled 30 A	H5 / 90 = 5 Solder pins angled 75 Ω
C4 = Solder/Crimp angled 40 A	75 / 58 = Solder pin, angled 40 A	91 = Screw termination 20 A
F2,61 / F1,41 = Solder cup 10 A	77 / 60 = Solder pin, angled 40 A	/ P1 = press fit 30A
F4,62 / F3,42 = Solder cup 20 A	81 / 66 = Solder pin, angled 20 A	/ P2 = press fit 30A
F6,63 / F5,43 = Solder cup 30 A	82 / 67 = Solder pin, angled 30 A	/ P4 = press fit 30A
F8,64 / F7,44 = Solder cup 40 A	85 / 65 = Solder pin, angled 30 A	99 = no high power, coax or crimp
68 / 48 = Solder pin, straight 20 A, D= .077" / 1.95 mm	G7 / 76 = 3 Solder pins Straight 50 Ω	contacts loaded
69 / 49 = Solder pin, straight 20 A, D= .102" / 2.60 mm	G9 / 78 = 3 Solder pins angled 50 Ω	Coaxial contacts with cable
70 / 50 = Solder pin, straight 20 A, D= .110" / 2.85 mm	H1 / 79 = 3 Solder pins angled 50 Ω	termination must be ordered separately.
71 / 51 = Solder pin, straight 30 A, D= .130" / 3.18 mm	H4 / 80 = 5 Solder pins angled 50 Ω	
72 / 52 = Solder pin, straight 40 A, D= .150" / 3.75 mm	G8 / 86 = 3 Solder pins Straight 75 Ω	

Mounting style

A1 = Riveted	E6 = 4-40 UNC threaded rear spacer with PCB clip, PCB .126" / 3.20 mm
A2 = M3 threaded insert	F1 = M3 clip and threaded rear spacer with PCB clip, PCB .063" / 1.60 mm
A3 = 4-40 UNC threaded insert	F2 = 4-40 UNC clip and threaded rear spacer with PCB clip, PCB .063" / 1.60 mm
A4 = M3 threaded rear spacer	F3 = M3 clip and threaded rear spacer with PCB clip, PCB .091" / 2.30 mm
A5 = 4-40 UNC threaded rear spacer	F4 = 4-40 UNC clip and threaded rear spacer with PCB clip, PCB .091" / 2.30 mm
A6 = Float fastening	F5 = M3 clip and threaded rear spacer with PCB clip, PCB .126" / 3.20 mm
A7 = Threaded rear spacer for M3 press fit	F6 = 4-40 UNC clip and threaded rear spacer with PCB clip, PCB .126" / 3.20 mm
A8 = Threaded rear spacer for 4-40 UNC press fit	G1 = Metal bracket, M3 threaded insert for .370" / 9.40 mm
C1 = M3 threaded rear spacer with PCB clip, PCB .063" / 1.60 mm	G2 = Metal bracket, 4-40 UNC threaded insert for .370" / 9.40 mm
C2 = 4-40 UNC threaded rear spacer with PCB clip, PCB .063" / 1.60 mm	G3 = Metal bracket, M3 threaded insert and clip for .370" / 9.40 mm
C3 = M3 threaded rear spacer with PCB clip, PCB .091" / 2.30 mm	G4 = Metal bracket, 4-40 UNC threaded insert and clip for .370" / 9.40 mm
C4 = 4-40 UNC threaded rear spacer with PCB clip, PCB .091" / 2.30 mm	H1 = Metal bracket, M3 threaded lock for .370" / 9.40 mm
C5 = M3 threaded rear spacer with PCB clip, PCB .126" / 3.20 mm	H2 = Metal bracket, 4-40 UNC threaded lock for .370" / 9.40 mm
C6 = 4-40 UNC Threaded rear spacer with PCB clip, PCB .126" / 3.20 mm	H3 = Metal bracket, M3 threaded lock and clip for .370" / 9.40 mm
D1 = M3 clip and threaded rear spacer with PCB clip, PCB .063" / 1.60 mm	H4 = Metal bracket, 4-40 UNC threaded lock and clip for .370" / 9.40 mm
D2 = 4-40 UNC clip and threaded rear spacer with PCB clip, PCB .063" / 1.60 mm	N1 = Metal bracket, M3 threaded insert for .280" / 7.19 mm
D3 = M3 clip and threaded rear spacer with PCB clip, PCB .091" / 2.30 mm	N2 = Metal bracket, 4-40 UNC threaded insert for .280" / 7.19 mm
D4 = 4-40 UNC clip and threaded rear spacer clip, PCB .091" / 2.30 mm	N3 = Metal bracket, M3 threaded insert and clip for .280" / 7.19 mm
D5 = M3 clip and threaded rear spacer with PCB clip, PCB .126" / 3.20 mm	N4 = Metal bracket, 4-40 UNC threaded insert and clip for .280" / 7.19 mm
D6 = 4-40 UNC clip and threaded rear spacer with PCB clip, PCB .126" / 3.20 mm	P1 = Metal bracket, M3 threaded lock for .280" / 7.19 mm
E1 = M3 threaded rear spacer with PCB clip, PCB .063" / 1.60 mm	P2 = Metal bracket, 4-40 UNC threaded lock for .280" / 7.19 mm
E2 = 4-40 UNC threaded rear spacer with PCB clip, PCB .063" / 1.60 mm	P3 = Metal bracket, M3 threaded lock and clip for .280" / 7.19 mm
E3 = M3 threaded rear spacer with PCB clip, PCB .091" / 2.30 mm	P4 = Metal bracket, 4-40 UNC threaded lock and clip for .280" / 7.19 mm
E4 = 4-40 UNC threaded rear spacer with PCB clip, PCB .091" / 2.30 mm	W1 = Threaded rear spacer with M3 press in pin
E5 = M3 threaded rear spacer with PCB clip, PCB .126" / 3.20 mm	W2 = Threaded rear spacer with 4-40 UNC press in pin

OX = Standard



Компания «ЭлектроПласт» предлагает заключение долгосрочных отношений при поставках импортных электронных компонентов на взаимовыгодных условиях!

Наши преимущества:

- Оперативные поставки широкого спектра электронных компонентов отечественного и импортного производства напрямую от производителей и с крупнейших мировых складов;
- Поставка более 17-ти миллионов наименований электронных компонентов;
- Поставка сложных, дефицитных, либо снятых с производства позиций;
- Оперативные сроки поставки под заказ (от 5 рабочих дней);
- Экспресс доставка в любую точку России;
- Техническая поддержка проекта, помощь в подборе аналогов, поставка прототипов;
- Система менеджмента качества сертифицирована по Международному стандарту ISO 9001;
- Лицензия ФСБ на осуществление работ с использованием сведений, составляющих государственную тайну;
- Поставка специализированных компонентов (Xilinx, Altera, Analog Devices, Intersil, Interpoint, Microsemi, Aeroflex, Peregrine, Syfer, Eurofarad, Texas Instrument, Miteq, Cobham, E2V, MA-COM, Hittite, Mini-Circuits, General Dynamics и др.);

Помимо этого, одним из направлений компании «ЭлектроПласт» является направление «Источники питания». Мы предлагаем Вам помощь Конструкторского отдела:

- Подбор оптимального решения, техническое обоснование при выборе компонента;
- Подбор аналогов;
- Консультации по применению компонента;
- Поставка образцов и прототипов;
- Техническая поддержка проекта;
- Защита от снятия компонента с производства.



Как с нами связаться

Телефон: 8 (812) 309 58 32 (многоканальный)

Факс: 8 (812) 320-02-42

Электронная почта: org@eplast1.ru

Адрес: 198099, г. Санкт-Петербург, ул. Калинина, дом 2, корпус 4, литера А.