

# PART NUMBER CREATOR

for Combination with no signal contacts

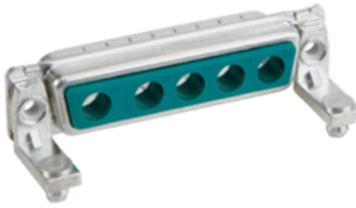
Arrangements which accept only the #8 sized contacts are: **2W2C, 3W3, 3W3C, 5W5 and 8W8**

The available #8 size contacts include:

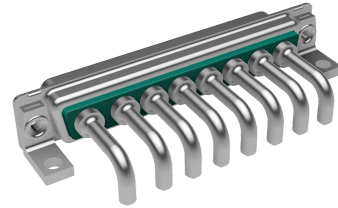
- Power with current ratings from 10 thru 40 amps
- Coax in 50 or 75 ohms
- High Voltage with plastic bodies for ratings up to 2,8 kV

The connectors are available:

with NO contacts at all



factory pre-loaded



**Included configurations are:**

- No hardware, flange has thru holes, typically used in a hood for the cable end
- Flange threads in 4-40 or M3
- Standoffs for straight PCB mounting with or without boardlock clips
- Right angle bracket with mounting hole locations in accordance with the footprint chosen

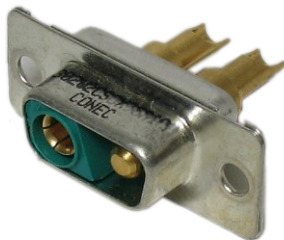
The Part Number Creator for these arrangements includes over 2500 choices. Configurations and hardware choices are all "coded" using the Part Number Creator.

**Here are some examples of "coding" for some popular ones, to help you to create your own:**

1. Please note that some hardware choices are optimized for a specific PCB thickness
2. Power and Coax Contacts are available in 2 quality classes

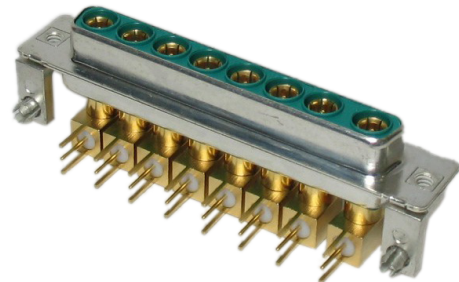
Example: 2W2 female, with 20 amp solder cup for a cable end:

**302W2CSXX42A10X**



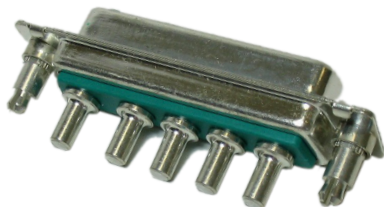
Example: 8W8 female, right angle with coax contacts, brackets with boardlocks:

**3008W8SXX88N40X**



Example: 5W5 straight, PCB power contacts, standoffs:

**3005W5SXX51E20X**



## PART NUMBER CREATOR

for Combination with no signal contacts

3 003W3 S X X 6 1 A 1 O X

## Product Line

- 3 = Shell steel tin plated
- 1 = Brass tin plated\*
- 5 = Shell yellow chromated\* (not RoHS compliant)
- A = Stainless steel\*

\*on request

## Shell size and design

- 1 = 2W2C
- 2 = 3W3, 3W3C
- 3 = 5W5
- 4 = 8W8

Empty positions ADD „0“ = 003W3

## Contact type

- P = Plug connector
- S = Socket connector

- X = Crimp and 3W3, 5W5, 8W8, 2W2C, 3W3C (no contacts are supplied with the connector)

\*on request

## Termination only for no SIGNAL contacts

- X = 3W3, 5W5, 8W8, 2W2C, 3W3C

## Termination for HIGH POWER- or COAXIAL contacts

## Quality class 3 / Quality class 1

- C1 = Solder/Crimp angled 10 A
- C2 = Solder/Crimp angled 20 A
- C3 = Solder/Crimp angled 30 A
- C4 = Solder/Crimp angled 40 A
- F2,61/F1,41 = Solder cup 10 A
- F4,62/F3,42 = Solder cup 20 A
- F6,63/F5,43 = Solder cup 30 A
- F8,64/F7,44 = Solder cup 40 A
- 68/48 = Solder pin, straight 20 A, D= .077"/1.95 mm
- 69/49 = Solder pin, straight 20 A, D= .102"/2.60 mm
- 70/50 = Solder pin, straight 20 A, D= .110"/2.85 mm
- 71/51 = Solder pin, straight 30 A, D= .130"/3.18 mm
- 72/52 = Solder pin, straight 40 A, D= .150"/3.75 mm

## Quality class 3 / Quality class 1

- 59/55 = Solder pin, angled 15 A
- 73/56 = Solder pin, angled 20 A
- 74/57 = Solder pin, angled 30 A
- 75/58 = Solder pin, angled 40 A
- 77/60 = Solder pin, angled 40 A
- 81/66 = Solder pin, angled 20 A
- 82/67 = Solder pin, angled 30 A
- 85/65 = Solder pin, angled 30 A
- G7/76 = 3 Solder pins Straight 50 Ω
- G9/78 = 3 Solder pins angled 50 Ω
- H1/79 = 3 Solder pins angled 50 Ω
- H4/80 = 5 Solder pins angled 50 Ω
- G8/86 = 3 Solder pins Straight 75 Ω

## Quality class 3 / Quality class 1

- H2/88 = 3 Solder pins angled 75 Ω
- H3/89 = 3 Solder pins angled 75 Ω
- H5/90 = 5 Solder pins angled 75 Ω
- 91 = Screw termination 20 A
- /P1 = press fit 30A
- /P2 = press fit 30A
- /P4 = press fit 30A
- 99 = no high power, coax or crimp contacts loaded  
Coaxial contacts with cable termination must be ordered separately.

## Mounting style

- |   |   |
|---|---|
| A1 = Riveted  | E6 = 440 UNC threaded rear spacer with PCB clip, PCB .126"/3.20 mm          |
| A2 = M3 threaded insert   | F1 = M3 clip and threaded rear spacer with PCB clip, PCB .063"/1.60 mm      |
| A3 = 440 UNC threaded insert  | F2 = 440 UNC clip and threaded rear spacer with PCB clip, PCB .063"/1.60 mm |
| A4 = M3 threaded rear spacer  | F3 = M3 clip and threaded rear spacer with PCB clip, PCB .091"/2.30 mm      |
| A5 = 440 UNC threaded rear spacer   | F4 = 440 UNC clip and threaded rear spacer with PCB clip, PCB .091"/2.30 mm |
| A6 = Float fastening  | F5 = M3 clip and threaded rear spacer with PCB clip, PCB .126"/3.20 mm      |
| A7 = Threaded rear spacer for M3 press fit                                  | F6 = 440 UNC clip and threaded rear spacer with PCB clip, PCB .126"/3.20 mm |
| A8 = Threaded rear spacer for 440 UNC press fit                             | G1 = Metal bracket, M3 threaded insert for .370"/9.40 mm                    |
| C1 = M3 threaded rear spacer with PCB clip, PCB .063"/1.60 mm               | G2 = Metal bracket, 440 UNC threaded insert for .370"/9.40 mm               |
| C2 = 440 UNC threaded rear spacer with PCB clip, PCB .063"/1.60 mm          | G3 = Metal bracket, M3 threaded insert and clip for .370"/9.40 mm           |
| C3 = M3 threaded rear spacer with PCB clip, PCB .091"/2.30 mm               | G4 = Metal bracket, 440 UNC threaded insert and clip for .370"/9.40 mm      |
| C4 = 440 UNC threaded rear spacer with PCB clip, PCB .091"/2.30 mm          | H1 = Metal bracket, M3 threaded lock for .370"/9.40 mm                      |
| C5 = M3 threaded rear spacer with PCB clip, PCB .126"/3.20 mm               | H2 = Metal bracket, 440 UNC threaded lock for .370"/9.40 mm                 |
| C6 = 440 UNC Threaded rear spacer with PCB clip, PCB .126"/3.20 mm          | H3 = Metal bracket, M3 threaded lock and clip for .370"/9.40 mm             |
| D1 = M3 clip and threaded rear spacer with PCB clip, PCB .063"/1.60 mm      | H4 = Metal bracket, 440 UNC threaded lock and clip for .370"/9.40 mm        |
| D2 = 440 UNC clip and threaded rear spacer with PCB clip, PCB .063"/1.60 mm | N1 = Metal bracket, M3 threaded insert for .280"/7.19 mm                    |
| D3 = M3 clip and threaded rear spacer with PCB clip, PCB .091"/2.30 mm      | N2 = Metal bracket, 440 UNC threaded insert for .280"/7.19 mm               |
| D4 = 440 UNC clip and threaded rear spacer clip, PCB .091"/2.30 mm          | N3 = Metal bracket, M3 threaded insert and clip for .280"/7.19 mm           |
| D5 = M3 clip and threaded rear spacer with PCB clip, PCB .126"/3.20 mm      | N4 = Metal bracket, 440 UNC threaded insert and clip for .280"/7.19 mm      |
| D6 = 440 UNC clip and threaded rear spacer with PCB clip, PCB .126"/3.20 mm | P1 = Metal bracket, M3 threaded lock for .280"/7.19 mm                      |
| E1 = M3 threaded rear spacer with PCB clip, PCB .063"/1.60 mm               | P2 = Metal bracket, 440 UNC threaded lock for .280"/7.19 mm                 |
| E2 = 440 UNC threaded rear spacer with PCB clip, PCB .063"/1.60 mm          | P3 = Metal bracket, M3 threaded lock and clip for .280"/7.19 mm             |
| E3 = M3 threaded rear spacer with PCB clip, PCB .091"/2.30 mm               | P4 = Metal bracket, 440 UNC threaded lock and clip for .280"/7.19 mm        |
| E4 = 440 UNC threaded rear spacer with PCB clip, PCB .091"/2.30 mm          | W1 = Threaded rear spacer with M3 press in pin                              |
| E5 = M3 threaded rear spacer with PCB clip, PCB .126"/3.20 mm               | W2 = Threaded rear spacer with 440 UNC press in pin                         |

OX = Standard



Компания «ЭлектроПласт» предлагает заключение долгосрочных отношений при поставках импортных электронных компонентов на взаимовыгодных условиях!

Наши преимущества:

- Оперативные поставки широкого спектра электронных компонентов отечественного и импортного производства напрямую от производителей и с крупнейших мировых складов;
- Поставка более 17-ти миллионов наименований электронных компонентов;
- Поставка сложных, дефицитных, либо снятых с производства позиций;
- Оперативные сроки поставки под заказ (от 5 рабочих дней);
- Экспресс доставка в любую точку России;
- Техническая поддержка проекта, помощь в подборе аналогов, поставка прототипов;
- Система менеджмента качества сертифицирована по Международному стандарту ISO 9001;
- Лицензия ФСБ на осуществление работ с использованием сведений, составляющих государственную тайну;
- Поставка специализированных компонентов (Xilinx, Altera, Analog Devices, Intersil, Interpoint, Microsemi, Aeroflex, Peregrine, Syfer, Eurofarad, Texas Instrument, Miteq, Cobham, E2V, MA-COM, Hittite, Mini-Circuits, General Dynamics и др.);

Помимо этого, одним из направлений компании «ЭлектроПласт» является направление «Источники питания». Мы предлагаем Вам помощь Конструкторского отдела:

- Подбор оптимального решения, техническое обоснование при выборе компонента;
- Подбор аналогов;
- Консультации по применению компонента;
- Поставка образцов и прототипов;
- Техническая поддержка проекта;
- Защита от снятия компонента с производства.



#### Как с нами связаться

**Телефон:** 8 (812) 309 58 32 (многоканальный)

**Факс:** 8 (812) 320-02-42

**Электронная почта:** [org@eplast1.ru](mailto:org@eplast1.ru)

**Адрес:** 198099, г. Санкт-Петербург, ул. Калинина, дом 2, корпус 4, литера А.