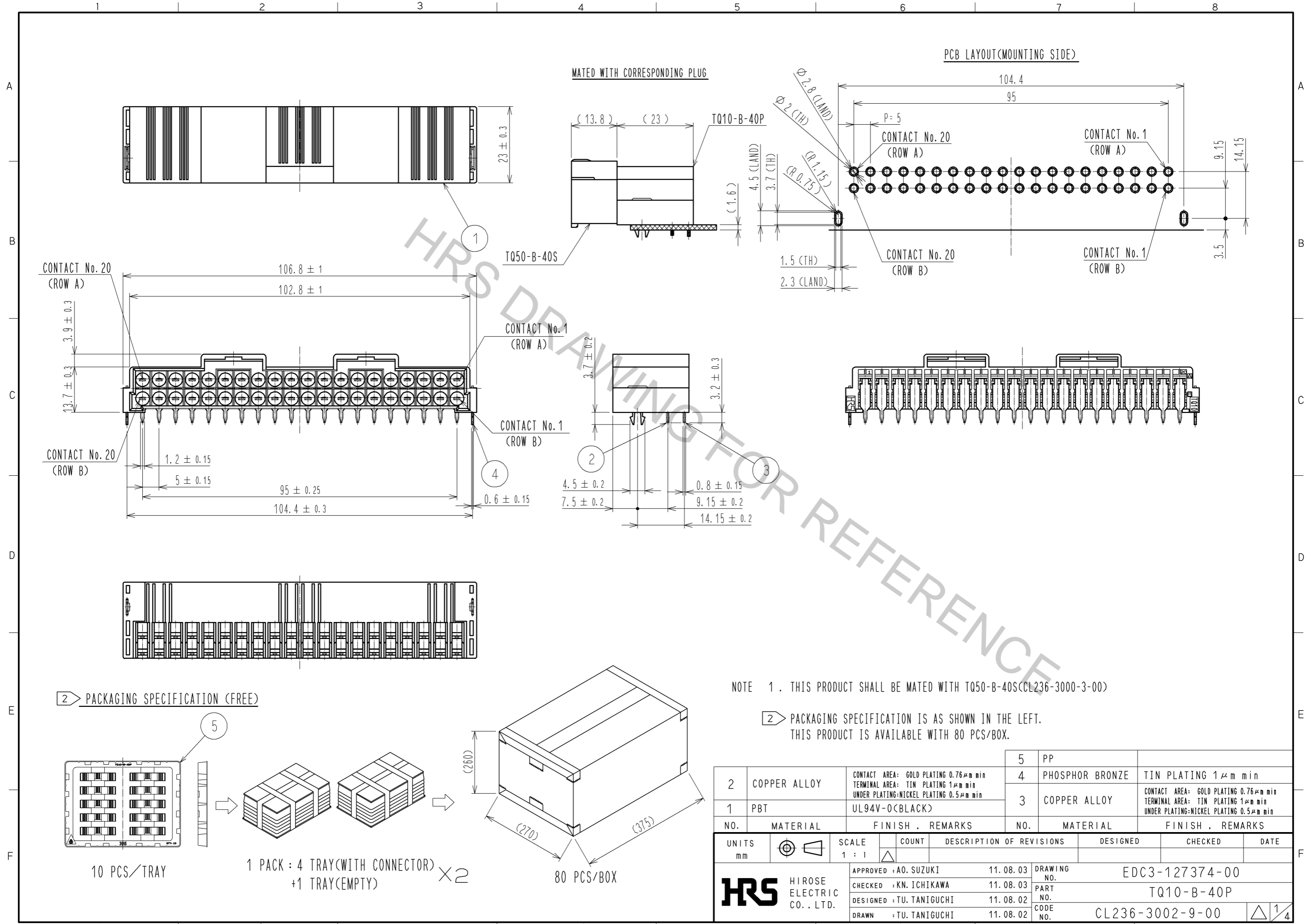


Dec.1.2018 Copyright 2018 HIROSE ELECTRIC CO., LTD. All Rights Reserved.
 In case that the application demands a high level of reliability, such as automotive,
 please contact a company representative for further information.

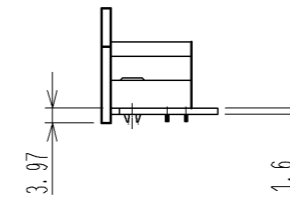
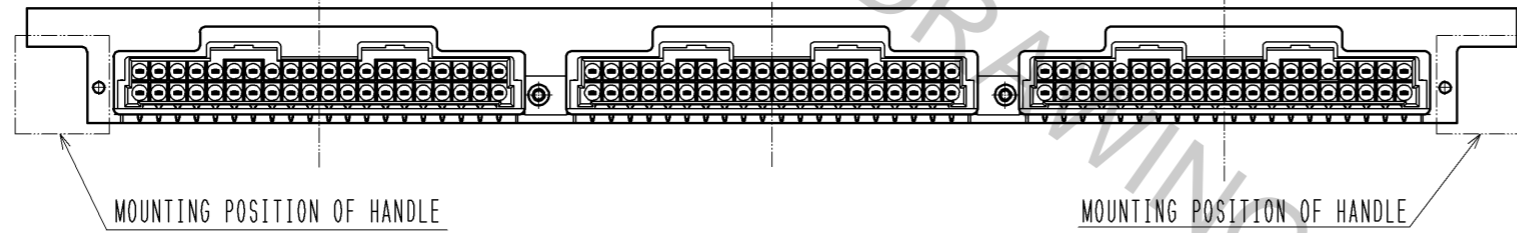
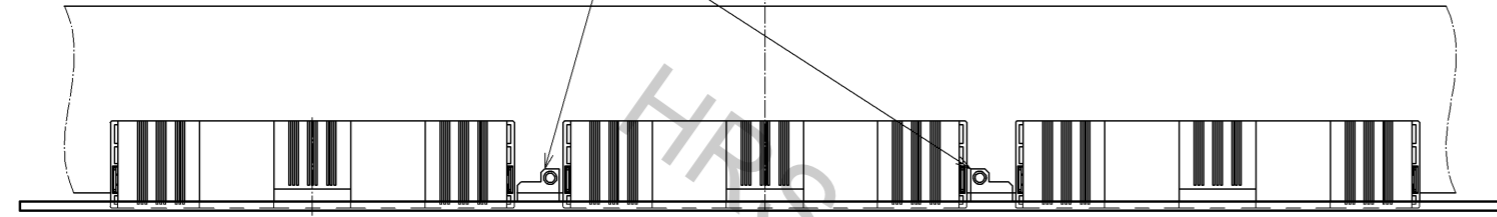


5	PP						
2	COPPER ALLOY	CONTACT AREA: GOLD PLATING 0.76µm min TERMINAL AREA: TIN PLATING 1µm min UNDER PLATING-NICKEL PLATING 0.5µm min	4	PHOSPHOR BRONZE	TIN PLATING 1µm min		
1	PBT	UL94V-0 (BLACK)	3	COPPER ALLOY	CONTACT AREA: GOLD PLATING 0.76µm min TERMINAL AREA: TIN PLATING 1µm min UNDER PLATING-NICKEL PLATING 0.5µm min		
NO.	MATERIAL	FINISH . REMARKS	NO.	MATERIAL	FINISH . REMARKS		
UNITS	⊕	SCALE	COUNT	DESCRIPTION OF REVISIONS	DESIGNED	CHECKED	DATE
mm		1 : 1	△				
APPROVED : A0. SUZUKI			11.08.03	DRAWING NO. EDC3-127374-00			
CHECKED : KN. ICHIKAWA			11.08.03	PART NO. TQ10-B-40P			
DESIGNED : TU. TANIGUCHI			11.08.02	CODE NO. CL236-3002-9-00			
DRAWN : TU. TANIGUCHI			11.08.02	1/4			

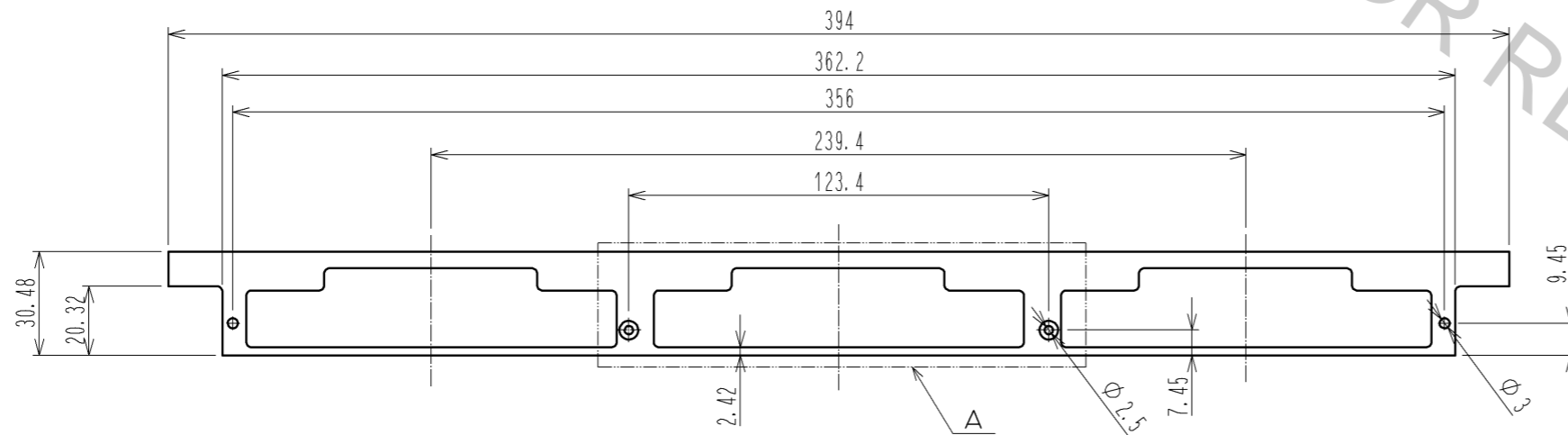
Dec.1.2018 Copyright 2018 HIROSE ELECTRIC CO., LTD. All Rights Reserved.
 In case that the application demands a high level of reliability, such as automotive,
 please contact a company representative for further information.

19 INCH PANEL CUTOUT FOR REFERENCE, REAR MOUNTED:3U-6Hp
 (1:2)

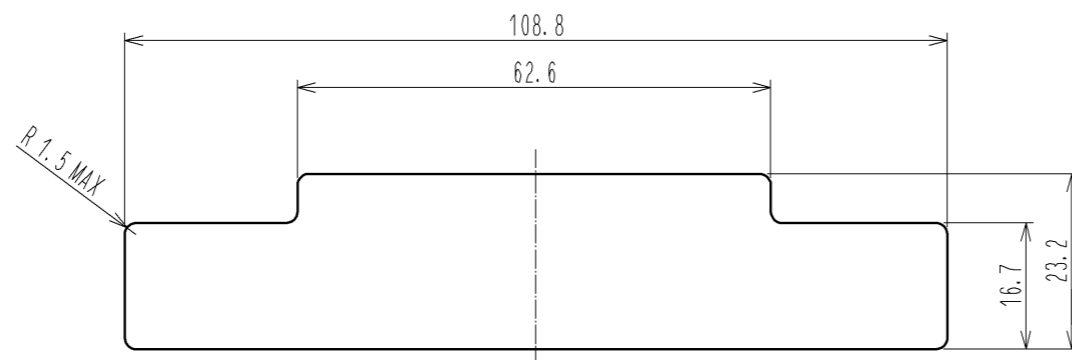
FRONT PANEL APPLICATION ATTACHMENT PARTS
 (COMPANY:UBER, METAL PEG, No:33981U085)



19 INCH PANEL CUTOUT FOR REFERENCE:3U-6Hp
 (1:2)



A (1:1)

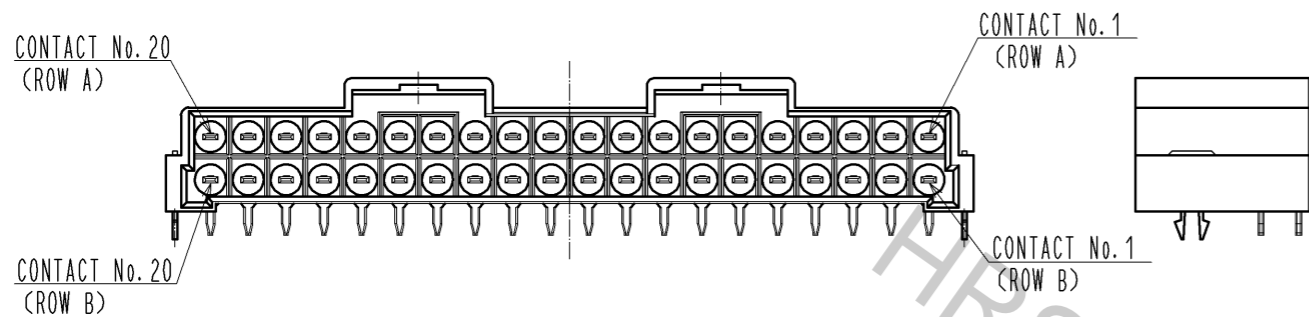


図番: EDC3-127374-00
 製品名: TQ10-B-40P
 製品コード: CL236-3002-9-00

2/4

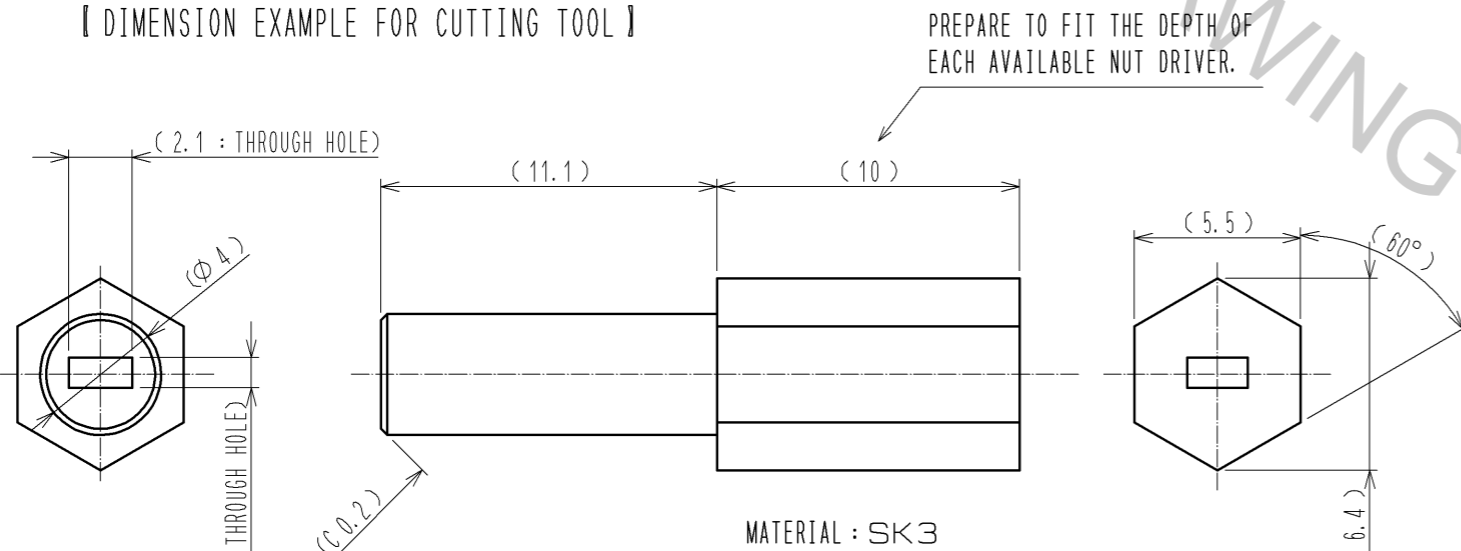
【 MIS-MATING PREVENTION WITH CODING KEY 】
 PRECAUTIONS FOR THE ARRANGEMENT OF CODING KEY ARE ON THE NEXT PAGE.

【 TQ10-B-40P 】



ATTACH THE CONTACT CUTTING TOOL (REFERENCE) SHOWN IN BELOW INTO A COMMERCIAALLY AVAILABLE NUT DRIVER (H5.5 WITH MAGNET), AND CUT INDICATED CONTACT BY TWISTING.

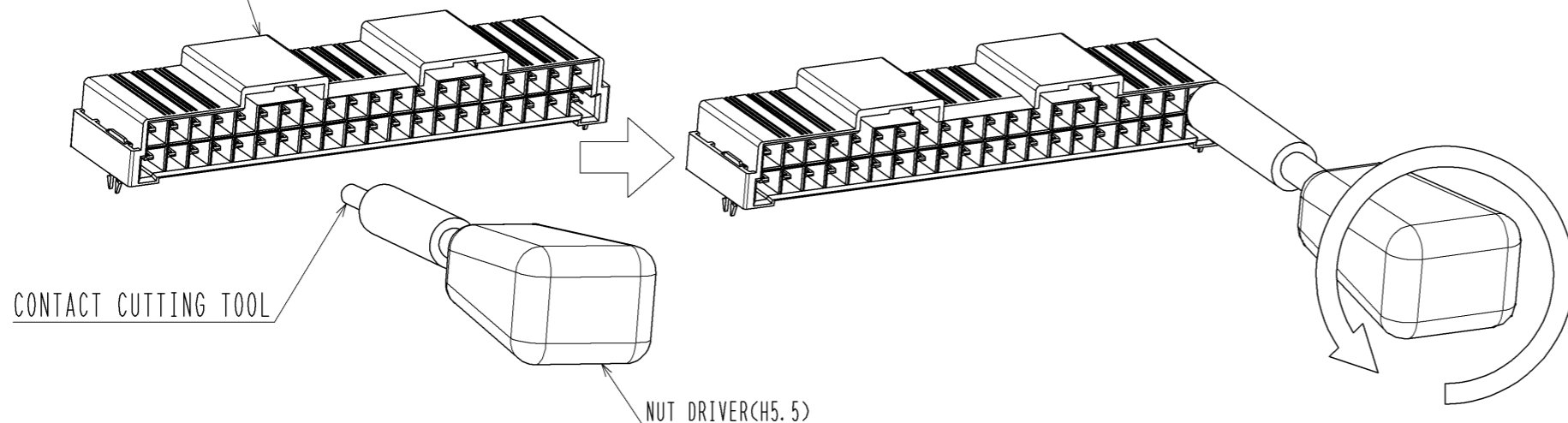
【 DIMENSION EXAMPLE FOR CUTTING TOOL 】



MATERIAL : SK3

NOTE: DIMENSION DETAILS OF HEX-HEAD NUT IS ACCORDING TO 'JIS B 1181 HEX NUTS CLASS 1 REGULAR M3'.

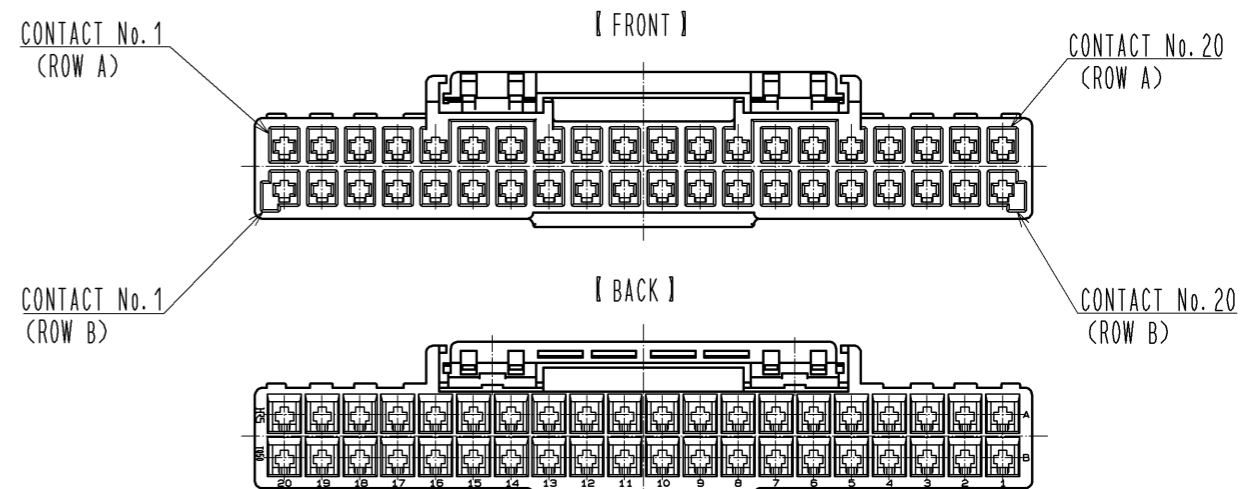
TQ10-B-40P



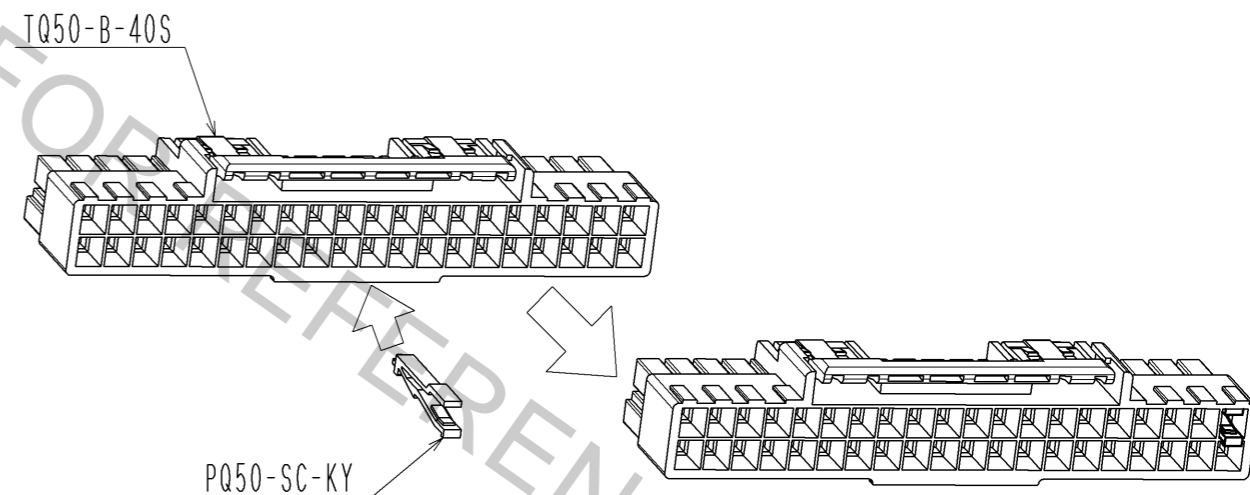
CONTACT CUTTING TOOL

NUT DRIVER(H5.5)

【 TQ50-B-40S 】



INSERT PQ50-SC-KY(CL236-2009-2) INTO THE SPECIFIED CONTACT CAVITY OF TQ50-B-40S.



MAKE SURE THAT BURR CAUSED BY CUTTING THE CONTACT IS KEPT WITHIN THE REFERENCE SURFACE.

REFERENCE SURFACE

HRS	DRAWING NO.	EDC3-127374-00
	PART NO.	TQ10-B-40P
	CODE NO.	CL236-3002-9-00
		3/4

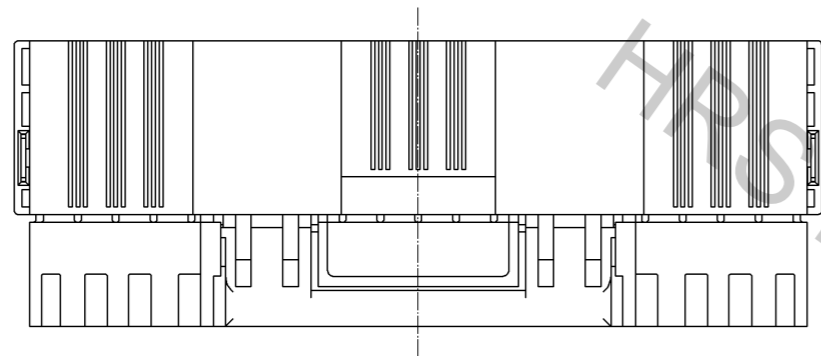
Dec.1.2018 Copyright 2018 HIROSE ELECTRIC CO., LTD. All Rights Reserved. In case that the application demands a high level of reliability, such as automotive, please contact a company representative for further information.

【 PRECAUTION ON HANDLE 】

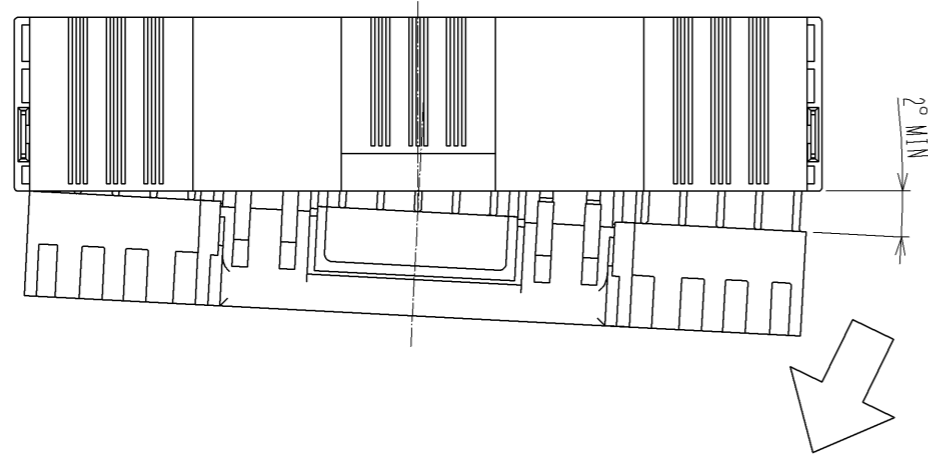
【 INSERTION AND WITHDRAWAL 】

CONNECTOR COULD BE DAMAGED IF EXCESSIVE FORCE IS APPLIED DURING INSERTION AND WITHDRAWAL. MAKE SURE TO INSERT AND WITHDRAW THE CONNECTOR STRAIGHT.

GOOD

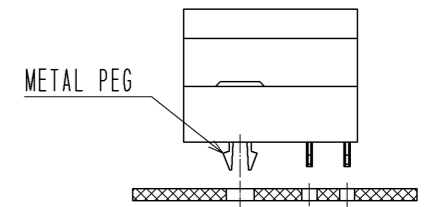


BAD

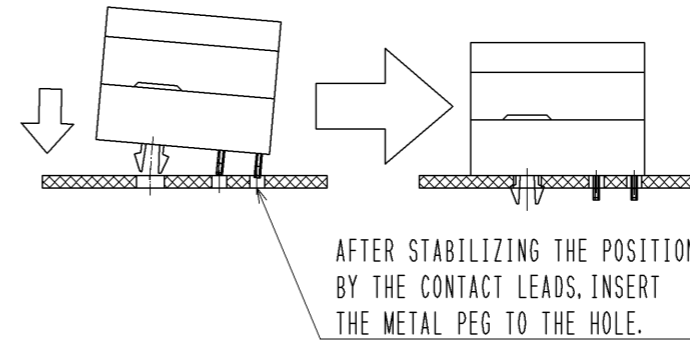


【 MOUNTING ON PCB 】

METAL PEG COULD BE PUSHED OUT IF AN EXCESSIVE FORCE IS APPLIED ON METAL PEG DURING MOUNTING ON PCB. MAKE SURE TO INSERT THE METAL PEG FITTINGS AFTER STABILIZING THE CONNECTOR POSITION TO THE SUBSTRATE BY THE CONTACT LEADS.

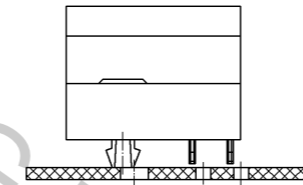


GOOD



AFTER STABILIZING THE POSITION BY THE CONTACT LEADS, INSERT THE METAL PEG TO THE HOLE.

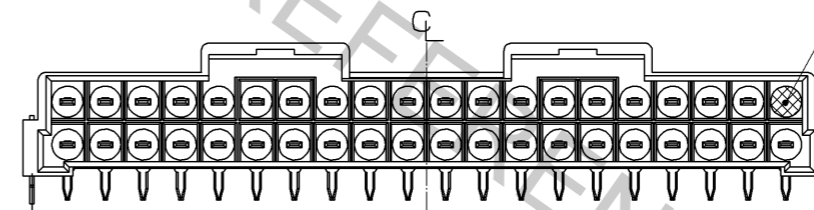
BAD



【 POSITION OF CODING KEY 】

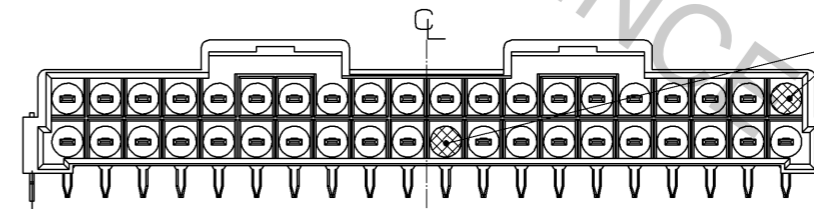
PLEASE SET UP THE KEY TO PREVENT MIS-MATING AT TWO PLACES OR MORE. NOTE: AVOID SETTING UP THE KEY TO ONE-SIDED FROM THE CENTERLINE.

BAD



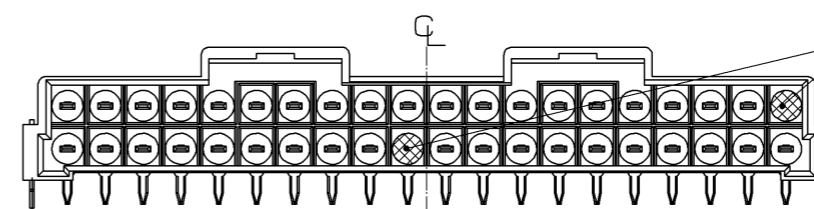
ONLY ONE-PLACE ON ONE SIDE

BAD



TWO-PLACE ON ONE SIDE (TO THE CENTER LINE)

GOOD



ONE-PLACE ON EACH SIDES (TO THE CENTER LINE)

HRS	DRAWING NO.	EDC3-127374-00
	PART NO.	TQ10-B-40P
	CODE NO.	CL236-3002-9-00
		△ 4/4

Dec.1.2018 Copyright 2018 HIROSE ELECTRIC CO., LTD. All Rights Reserved. In case that the application demands a high level of reliability, such as automotive, please contact a company representative for further information.



Компания «ЭлектроПласт» предлагает заключение долгосрочных отношений при поставках импортных электронных компонентов на взаимовыгодных условиях!

Наши преимущества:

- Оперативные поставки широкого спектра электронных компонентов отечественного и импортного производства напрямую от производителей и с крупнейших мировых складов;
- Поставка более 17-ти миллионов наименований электронных компонентов;
- Поставка сложных, дефицитных, либо снятых с производства позиций;
- Оперативные сроки поставки под заказ (от 5 рабочих дней);
- Экспресс доставка в любую точку России;
- Техническая поддержка проекта, помощь в подборе аналогов, поставка прототипов;
- Система менеджмента качества сертифицирована по Международному стандарту ISO 9001;
- Лицензия ФСБ на осуществление работ с использованием сведений, составляющих государственную тайну;
- Поставка специализированных компонентов (Xilinx, Altera, Analog Devices, Intersil, Interpoint, Microsemi, Aeroflex, Peregrine, Syfer, Eurofarad, Texas Instrument, Miteq, Cobham, E2V, MA-COM, Hittite, Mini-Circuits, General Dynamics и др.);

Помимо этого, одним из направлений компании «ЭлектроПласт» является направление «Источники питания». Мы предлагаем Вам помощь Конструкторского отдела:

- Подбор оптимального решения, техническое обоснование при выборе компонента;
- Подбор аналогов;
- Консультации по применению компонента;
- Поставка образцов и прототипов;
- Техническая поддержка проекта;
- Защита от снятия компонента с производства.



Как с нами связаться

Телефон: 8 (812) 309 58 32 (многоканальный)

Факс: 8 (812) 320-02-42

Электронная почта: org@eplast1.ru

Адрес: 198099, г. Санкт-Петербург, ул. Калинина, дом 2, корпус 4, литера А.