

**Description: MiMo LTE, GNSS Vehicle Mount
Antenna**

Series: Panther

**PART NUMBER: GPSMB301, GPSMB302, GPSMB301R,
GPSMB302R**



Features:

- Supports LTE 698-960/1695-2170/2300-2700/2900-3600MHz(MIMO)
- Supports Beidou, GPS, Galileo, GLONASS
- Direct Mount and optional Magnetic Mount features
- See GPSMBMM for magnetic mount details

Applications:

- Energy (Utility Vehicles)
- First Responders (Police, Ambulance, Fire)
- Fleet Management
- Location based services
- Telematics
- Railroad

All dimensions are in mm / inches

Issue: 1823

In the effort to improve our products, we reserve the right to make changes judged to be necessary.

CONFIDENTIAL AND PROPRIETARY INFORMATION

This document contains confidential and proprietary information of Pulse Electronics, Inc. (Pulse) and is protected by copyright, trade secret and other state and federal laws. Its receipt or possession does not convey any rights to reproduce, disclose its contents, or to manufacture, use or sell anything it may describe. Reproduction, disclosure or use without specific written authorization of Pulse is strictly forbidden.

For more information:

Pulse Worldwide Headquarters
12220 World Trade Drive
San Diego, CA 92128
USA
Tel: 1-858-674-8100

Pulse/Larsen Antennas
18110 SE 34th St Bldg 2 Suite 250
Vancouver, WA 98683
USA
Tel: 1-360-944-7551

Europe Headquarters
Pulse GmbH & Do, KG
Zeppelinstrasse 15
Herrenberg, Germany
Tel: 49 7032 7806 0

Pulse (Suzhou) Wireless Products Co, Inc.
99 Huo Ju Road(#29 Bldg,4th Phase
Suzhou New District
Jiangsu Province, Suzhou 215009 PR China
Tel: 86 512 6807 9998



Description: MiMo LTE, GNSS Vehicle Mount Antenna

Series: Panther

PART NUMBER: GPSMB301, GPSMB302, GPSMB301R, GPSMB302R

This document covers all product variants of the following product family

Model No.	Color	Remark
GPSMB301	Black	
GPSMB302	White	
GPSMB301R	Black	Compliant with EN 50155, EN 61373, EN45545-2, railroad application.
GPSMB302R	White	Compliant with EN 50155, EN 61373, EN45545-2, railroad application.

Issue: 1823

In the effort to improve our products, we reserve the right to make changes judged to be necessary.

CONFIDENTIAL AND PROPRIETARY INFORMATION

This document contains confidential and proprietary information of Pulse Electronics, Inc. (Pulse) and is protected by copyright, trade secret and other state and federal laws. Its receipt or possession does not convey any rights to reproduce, disclose its contents, or to manufacture, use or sell anything it may describe. Reproduction, disclosure or use without specific written authorization of Pulse is strictly forbidden.

For more information:

Pulse Worldwide Headquarters
 12220 World Trade Drive
 San Diego, CA 92128
 USA
 Tel: 1-858-674-8100

Pulse/Larsen Antennas
 18110 SE 34th St Bldg 2 Suite 250
 Vancouver, WA 98683
 USA
 Tel: 1-360-944-7551

Europe Headquarters
 Pulse GmbH & Do, KG
 Zeppelinstrasse 15
 Herrenberg, Germany
 Tel: 49 7032 7806 0

Pulse (Suzhou) Wireless Products Co, Inc.
 99 Huo Ju Road(#29 Bldg,4th Phase
 Suzhou New District
 Jiangsu Province, Suzhou 215009 PR China
 Tel: 86 512 6807 9998



Description: MiMo LTE, GNSS Vehicle Mount Antenna

Series: Panther

PART NUMBER: GPSMB301, GPSMB302, GPSMB301R, GPSMB302R

ELECTRICAL SPECIFICATIONS

Frequency (LTE)	698 – 960 / 1695 - 2170 / 2300 – 2700 / 2900 - 3600	MHz
Frequency (Beidou, GPS, Galileo, Glonass)	1561.098 ± 2.046/ 1575.42 ± 1.023/ 1602.5625 ± 4	MHz
Nominal Impedance	50	Ω
VSWR (LTE)	< 1.5	
Gain* (LTE antenna, < 2170 MHz)	6	dBi ± 1 dB
Gain* (LTE antenna, > 2170 MHz)	5.5	dBi ± 1 dB
Isolation LTE to LTE**	15 or better	dB
GNSS antenna RHCP gain	1	dBic ± 2dB
LNA gain	30	dB ± 2 dB
Noise Figure	2.5 (cascade)	dB
Current	8	mA ± 2 mA
V _{dc}	3-5	V _{dc}
LNA and filter attenuation		
	@ 824 MHz	70 dB
	@ 960 MHz	65 dB
	@ 1710 MHz	60 dB
	@ 2170 MHz	65 dB
Connector type	SMA	
Cable type(s)	RG-58 (LTE) / RG-174 (GPS)	
Length	17	Feet

*Measured on 2ft GND plane and with 4 inch cables

**In free space with 17ft cables

Issue: 1823

In the effort to improve our products, we reserve the right to make changes judged to be necessary.

CONFIDENTIAL AND PROPRIETARY INFORMATION

This document contains confidential and proprietary information of Pulse Electronics, Inc. (Pulse) and is protected by copyright, trade secret and other state and federal laws. Its receipt or possession does not convey any rights to reproduce, disclose its contents, or to manufacture, use or sell anything it may describe. Reproduction, disclosure or use without specific written authorization of Pulse is strictly forbidden.

**Description: MiMo LTE, GNSS Vehicle Mount
Antenna**

Series: Panther

**PART NUMBER: GPSMB301, GPSMB302, GPSMB301R,
GPSMB302R**

MECHANICAL SPECIFICATIONS

Plastic radome for GPSMB301/GPSMB302	ABS/PC Material UV Stabilized, UL-94HB
for GPSMB301R/GPSMB302R	PC material, EN45545 R6 HL3 compliant
Color	Black, White
Ingress Protection	IP67
Weight	~940 g
Mounting	Direct or Magnetic options

ENVIRONMENTAL SPECIFICATIONS

Operating temperature	-40-+85° C
Humidity	95%RH @ +25°C for 12h and 55°C for 12h
Vibration	MIL-STD 810G, section 514.6 , 5-500 Hz, 60min/axis
Thermal Shocks	MIL-STD 810G, section 503.5, -40 to +85°C, 3 cycles
Drop Test	Minimum of one drop per axis – 4, 1 meter drops

Description: MiMo LTE, GNSS Vehicle Mount Antenna

Series: Panther

PART NUMBER: GPSMB301, GPSMB302, GPSMB301R, GPSMB302R

Tests for railroad certification per EN50155, EN61373, EN45545-2

NO	T SN IN STAND	TEST DESCRIPTION	REFER STANDARD	TEST REPORT NO	RESULT(PASS/FAIL)
1	12.2.3	Cooling test	EN 50155	DD20170919002	PASS
2	12.2.4	Dry heat test			
3	12.2.5	Damp heat test, cyclic			
4	12.2.6	Supply overvoltages	EN 50155	W01714200900E	PASS
5	12.2.7	Surges, electrostatic discharge and transient burst susceptibility tests	EN 50155	E1710056-01E	PASS
6	12.2.8	Radio interference			
7	12.2.9	Insulation test	EN 50155	E17110014-01E	PASS
8	12.2.10	Salt mist test	EN 50155	DD20170919002	PASS
9	12.2.11	Vibration	EN 61373		
		Shock, and bump test	EN 61373		
10	12.2.12	Watertightness test	EN 50155		
11	12.2.14	Low temperature storage test	EN 50155	TC 18 02 000528	HL1&HL2
12	/	fire & smoke	EN 45545-2 R15&R16		
			EN 45545-2 R15&R16	TC.18.04.001633	HL1&HL2&HL3

Issue: 1823

In the effort to improve our products, we reserve the right to make changes judged to be necessary.

CONFIDENTIAL AND PROPRIETARY INFORMATION

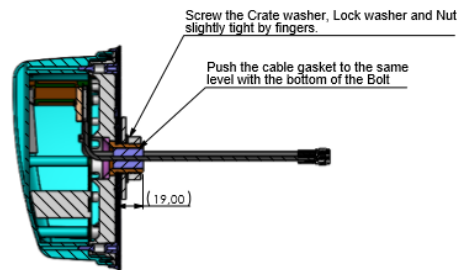
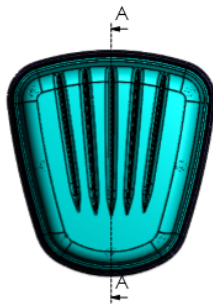
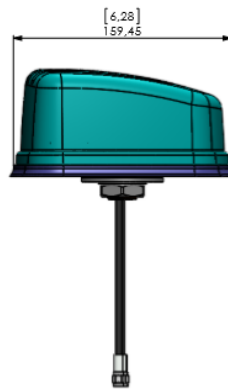
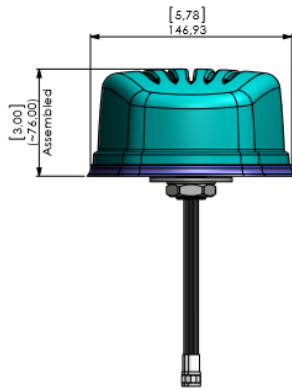
This document contains confidential and proprietary information of Pulse Electronics, Inc. (Pulse) and is protected by copyright, trade secret and other state and federal laws. Its receipt or possession does not convey any rights to reproduce, disclose its contents, or to manufacture, use or sell anything it may describe. Reproduction, disclosure or use without specific written authorization of Pulse is strictly forbidden.

Description: MiMo LTE, GNSS Vehicle Mount Antenna

Series: Panther

PART NUMBER: GPSMB301, GPSMB302, GPSMB301R, GPSMB302R

MECHANICAL DRAWING



Tolerances of linear dimensions (MEDIUM ISO 2768-m)	
Dimension	Tolerance
0,5 - 3	±0,1
3 - 6	±0,1
6 - 30	±0,2
30 - 120	±0,3
120 - 400	±0,5
400 - 1000	±0,8
1000 - 2000	±1,2
2000 - 4000	±2

Tolerances of angular dimensions (MEDIUM ISO 2768-m)	
Dimension of chamfer side (millimeter)	Tolerance
up to 10	±1°
10 - 30	±0°30'
30 - 120	±0°20'
120 - 400	±0°15'
over 400	±0°12'

Tolerances of radii and chamfers (MEDIUM ISO 2768-m)	
Radius, chamfer height	Tolerance
0,5 - 3	±0,2
3 - 6	±0,5
over 6	±1

No riveting cristles allowed to use.

Functional Characteristics by:
 Process capability studies required, total 0 pcs.
 Process capability studies required and ongoing statistical process control required, total 0 pcs.

Please follow Pulse limits of hazardous substances (RoHS, halogens) in the document Pulse hazardous Substances (HS) Limits and Vehicle Safety Substances Material Composition (VSM-MC002).

Matr.	Application
P01	Cable Tie around GPS updated.
A	A-Release.

Pulse Pulse Finland Oy
 Puhuri 6
 FI-00500 Espoo, Finland
 Tel: +358 207 733 600
 Fax: +358 207 733 201
 www.pulseelectronics.com/antennas

Product: GPSMB301
 Part Name: Antenna Assembly

Sheet number:	2/2
General tolerance:	
Customer number:	
Date:	12.03.2015
Drawn:	
Check:	
Appr:	
Scale:	1:2 (A2)
Document number:	GPSMB301
Part Version:	
Document Version:	A
Issue:	A 18.09.2015 Jarko
Mod:	P11 02.07.2015 Jarko
Date:	
Name:	

Issue: 1823

In the effort to improve our products, we reserve the right to make changes judged to be necessary.

CONFIDENTIAL AND PROPRIETARY INFORMATION

This document contains confidential and proprietary information of Pulse Electronics, Inc. (Pulse) and is protected by copyright, trade secret and other state and federal laws. Its receipt or possession does not convey any rights to reproduce, disclose its contents, or to manufacture, use or sell anything it may describe. Reproduction, disclosure or use without specific written authorization of Pulse is strictly forbidden.



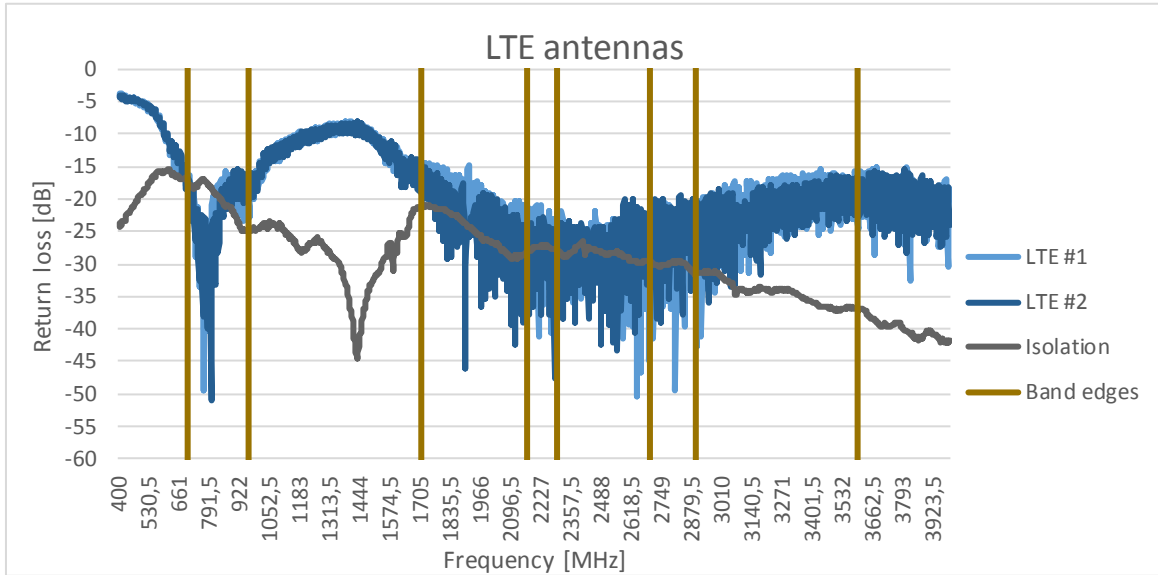
Description: MiMo LTE, GNSS Vehicle Mount Antenna

Series: Panther

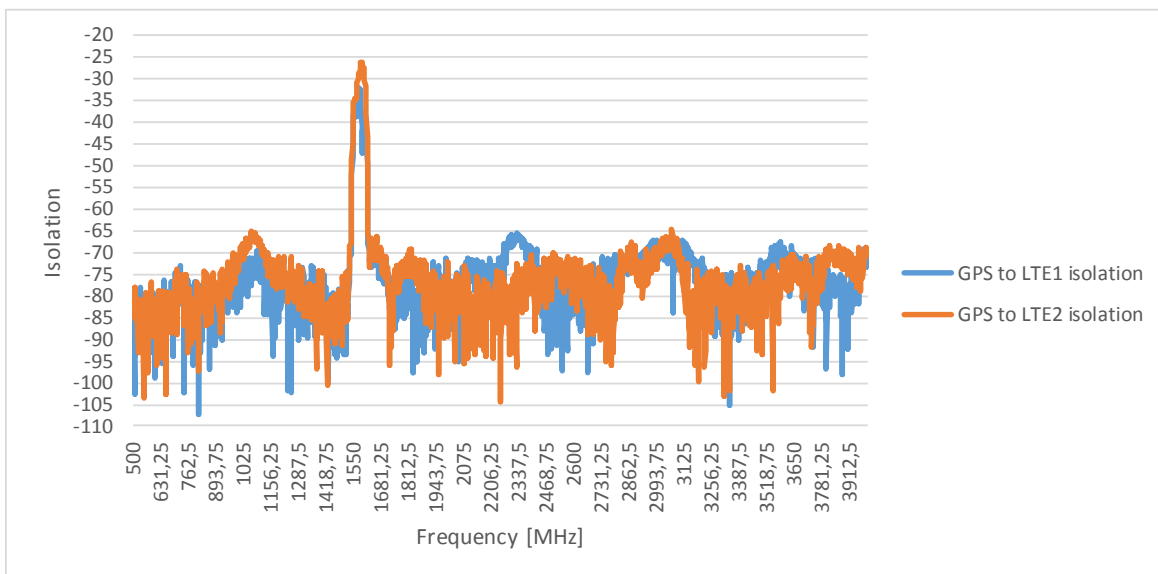
PART NUMBER: GPSMB301, GPSMB302, GPSMB301R, GPSMB302R

CHARTS

Return loss and isolation in free space, LTE antennas**



GNSS isolation to LTE 1 and LTE 2 antenna*



Issue: 1823

In the effort to improve our products, we reserve the right to make changes judged to be necessary.

CONFIDENTIAL AND PROPRIETARY INFORMATION

This document contains confidential and proprietary information of Pulse Electronics, Inc. (Pulse) and is protected by copyright, trade secret and other state and federal laws. Its receipt or possession does not convey any rights to reproduce, disclose its contents, or to manufacture, use or sell anything it may describe. Reproduction, disclosure or use without specific written authorization of Pulse is strictly forbidden.

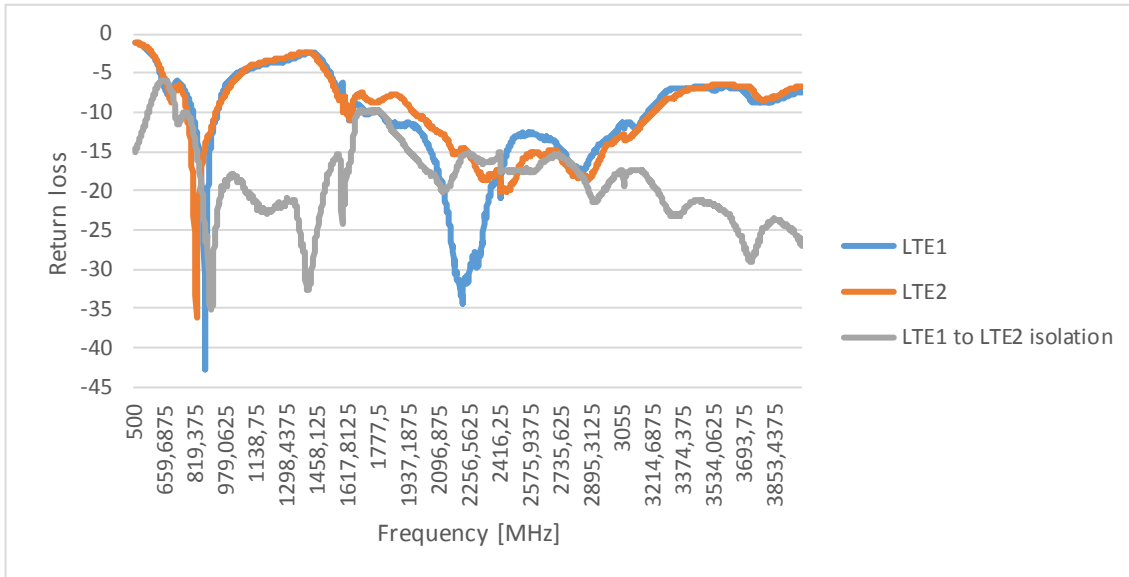
Description: MiMo LTE, GNSS Vehicle Mount Antenna

Series: Panther

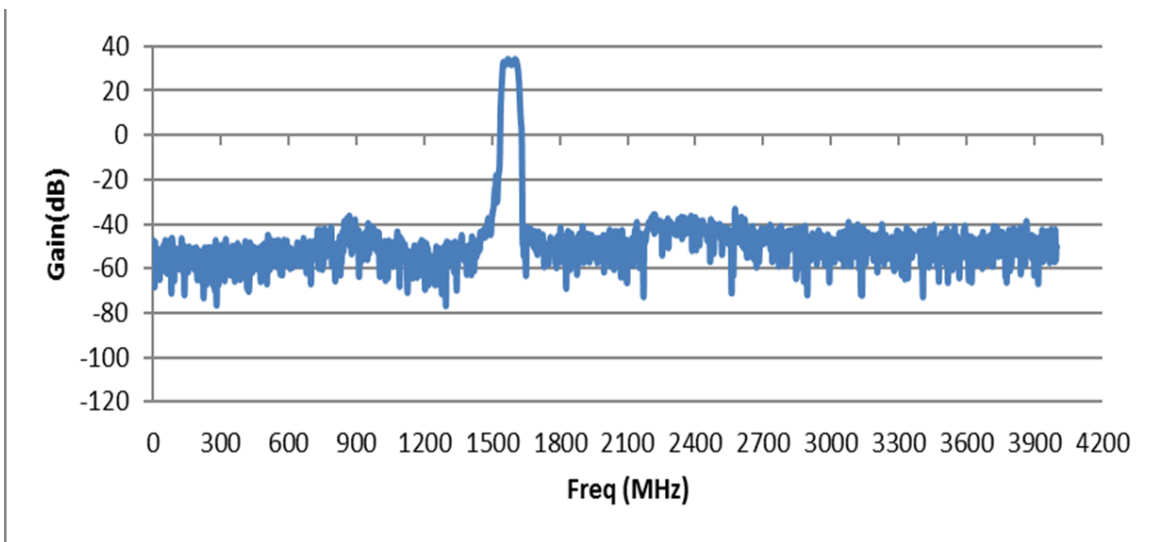
PART NUMBER: GPSMB301, GPSMB302, GPSMB301R, GPSMB302R

CHARTS

Return loss and isolation, LTE antennas*



GNSS LNA performance



Issue: 1823

In the effort to improve our products, we reserve the right to make changes judged to be necessary.

CONFIDENTIAL AND PROPRIETARY INFORMATION

This document contains confidential and proprietary information of Pulse Electronics, Inc. (Pulse) and is protected by copyright, trade secret and other state and federal laws. Its receipt or possession does not convey any rights to reproduce, disclose its contents, or to manufacture, use or sell anything it may describe. Reproduction, disclosure or use without specific written authorization of Pulse is strictly forbidden.

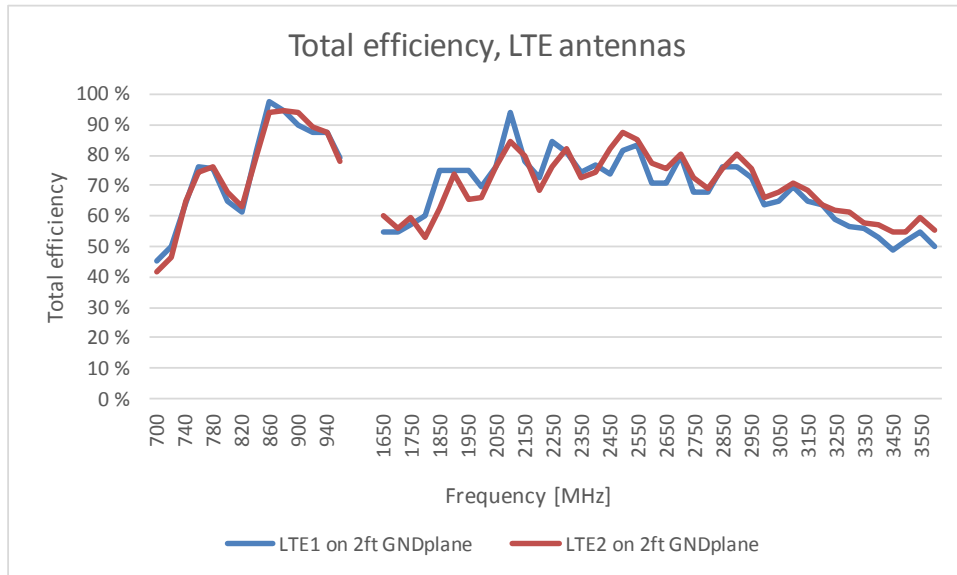
Description: MiMo LTE, GNSS Vehicle Mount Antenna

Series: Panther

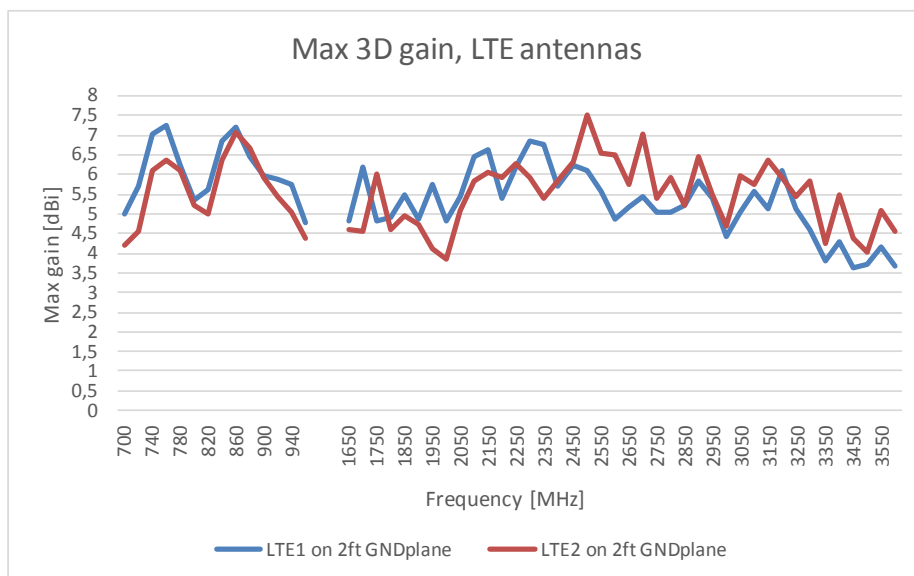
PART NUMBER: GPSMB301, GPSMB302, GPSMB301R, GPSMB302R

CHARTS

LTE antenna total efficiency with 2ft metal plate and 4 inch cables



Maximum 3D gain, LTE antenna with 2ft metal plate and 4inch cables



Issue: 1823

In the effort to improve our products, we reserve the right to make changes judged to be necessary.

CONFIDENTIAL AND PROPRIETARY INFORMATION

This document contains confidential and proprietary information of Pulse Electronics, Inc. (Pulse) and is protected by copyright, trade secret and other state and federal laws. Its receipt or possession does not convey any rights to reproduce, disclose its contents, or to manufacture, use or sell anything it may describe. Reproduction, disclosure or use without specific written authorization of Pulse is strictly forbidden.

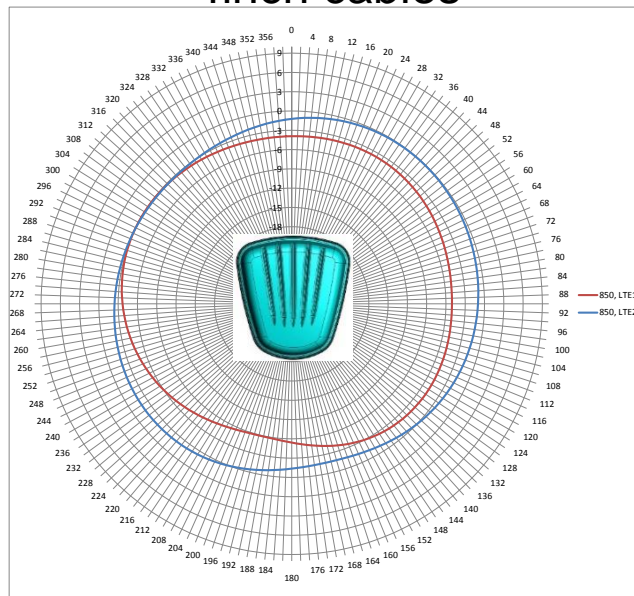
**Description: MiMo LTE, GNSS Vehicle Mount
Antenna**

Series: Panther

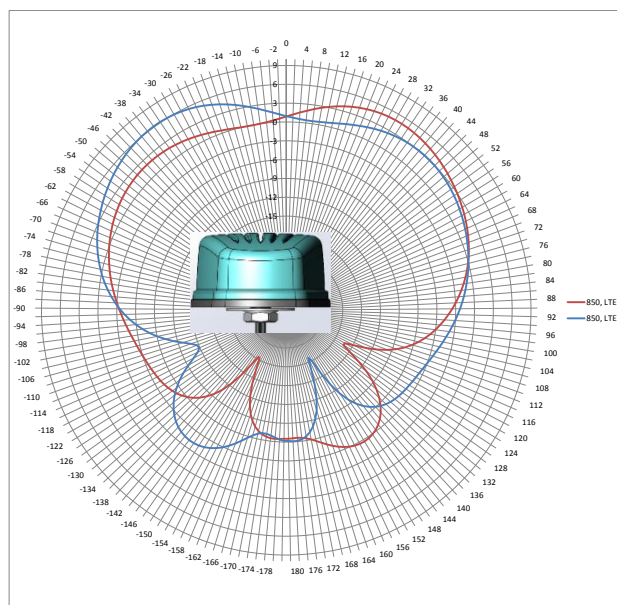
**PART NUMBER: GPSMB301, GPSMB302, GPSMB301R,
GPSMB302R**

CHARTS

LTE antenna radiation pattern at 850MHz with 2ft metal plate and 4inch cables



Horizontal plot



Vertical plot front view

Issue: 1823

In the effort to improve our products, we reserve the right to make changes judged to be necessary.

CONFIDENTIAL AND PROPRIETARY INFORMATION

This document contains confidential and proprietary information of Pulse Electronics, Inc. (Pulse) and is protected by copyright, trade secret and other state and federal laws. Its receipt or possession does not convey any rights to reproduce, disclose its contents, or to manufacture, use or sell anything it may describe. Reproduction, disclosure or use without specific written authorization of Pulse is strictly forbidden.

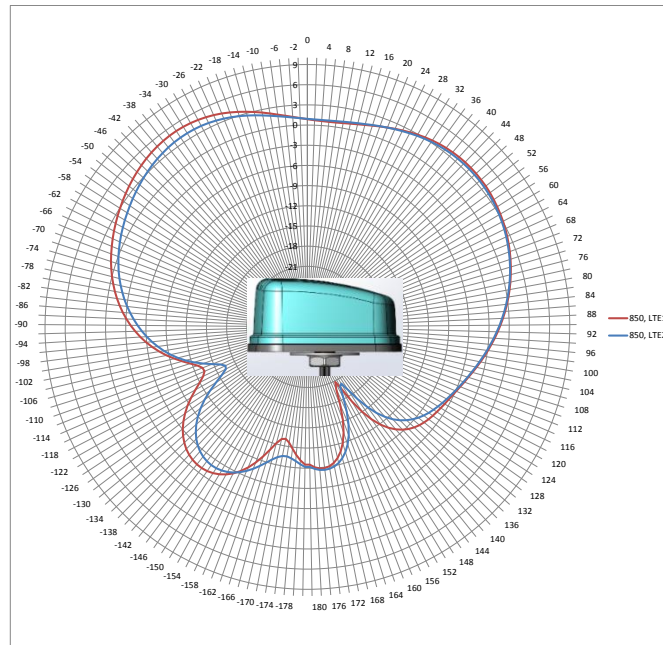
**Description: MiMo LTE, GNSS Vehicle Mount
Antenna**

Series: Panther

**PART NUMBER: GPSMB301, GPSMB302, GPSMB301R,
GPSMB302R**

CHARTS

LTE antenna radiation pattern at 850MHz with 2ft metal plate and 4inch cables



Vertical plot side view

Issue: 1823

In the effort to improve our products, we reserve the right to make changes judged to be necessary.

CONFIDENTIAL AND PROPRIETARY INFORMATION

This document contains confidential and proprietary information of Pulse Electronics, Inc. (Pulse) and is protected by copyright, trade secret and other state and federal laws. Its receipt or possession does not convey any rights to reproduce, disclose its contents, or to manufacture, use or sell anything it may describe. Reproduction, disclosure or use without specific written authorization of Pulse is strictly forbidden.

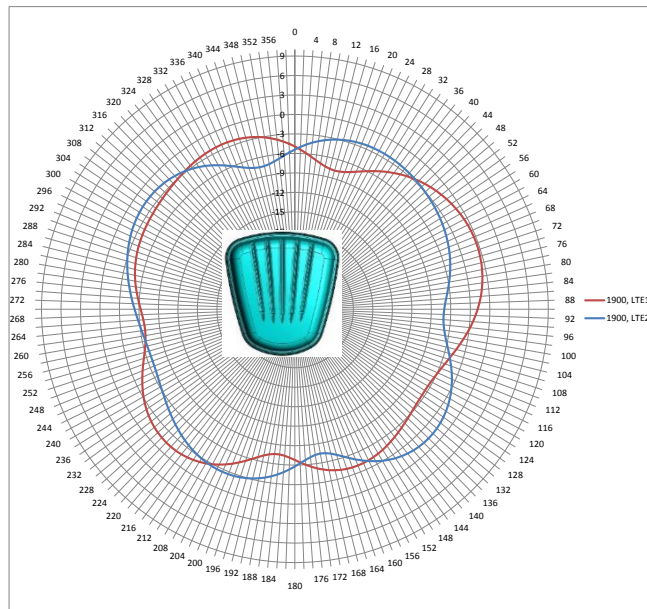
**Description: MiMo LTE, GNSS Vehicle Mount
Antenna**

Series: Panther

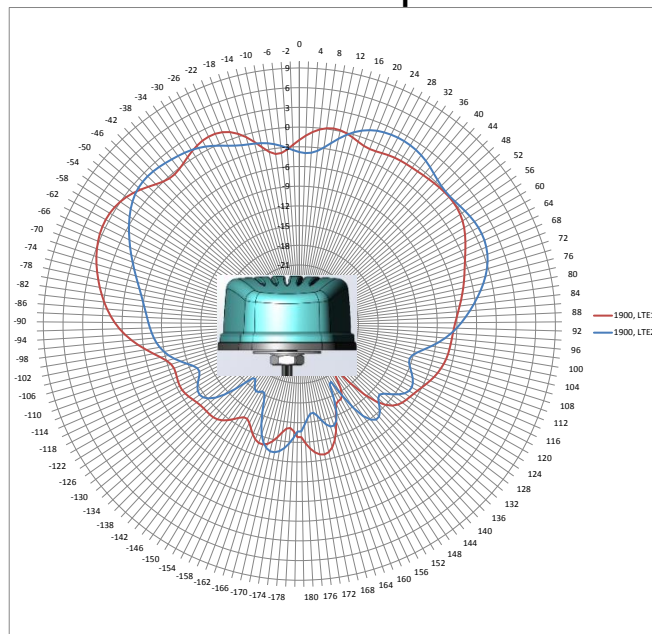
**PART NUMBER: GPSMB301, GPSMB302, GPSMB301R,
GPSMB302R**

CHARTS

LTE antenna radiation pattern at 1900MHz with 2ft metal plate and 4inch cables



Horizontal plot



Vertical plot front view

Issue: 1823

In the effort to improve our products, we reserve the right to make changes judged to be necessary.

CONFIDENTIAL AND PROPRIETARY INFORMATION

This document contains confidential and proprietary information of Pulse Electronics, Inc. (Pulse) and is protected by copyright, trade secret and other state and federal laws. Its receipt or possession does not convey any rights to reproduce, disclose its contents, or to manufacture, use or sell anything it may describe. Reproduction, disclosure or use without specific written authorization of Pulse is strictly forbidden.

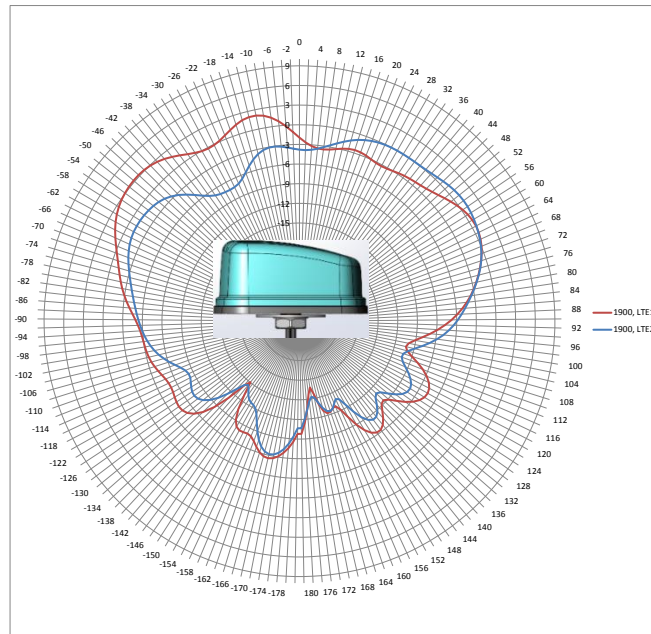
**Description: MiMo LTE, GNSS Vehicle Mount
Antenna**

Series: Panther

**PART NUMBER: GPSMB301, GPSMB302, GPSMB301R,
GPSMB302R**

CHARTS

LTE antenna radiation pattern at 1900MHz with 2ft metal plate and 4inch cables



Vertical plot side view

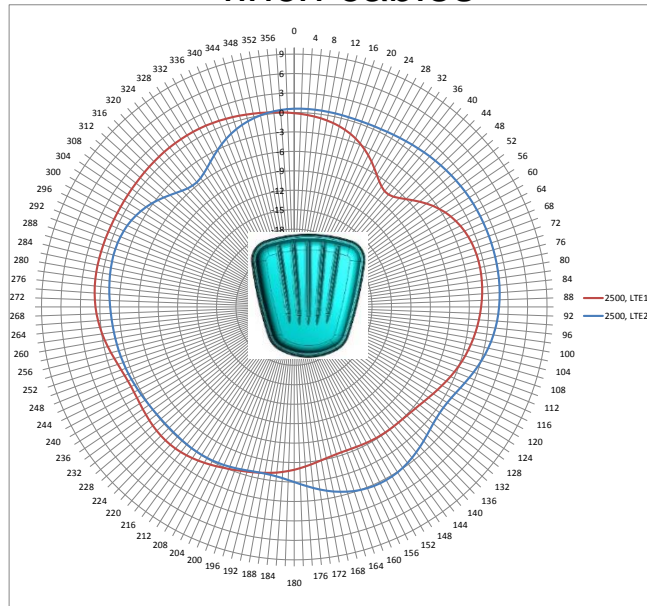
Description: MiMo LTE, GNSS Vehicle Mount Antenna

Series: Panther

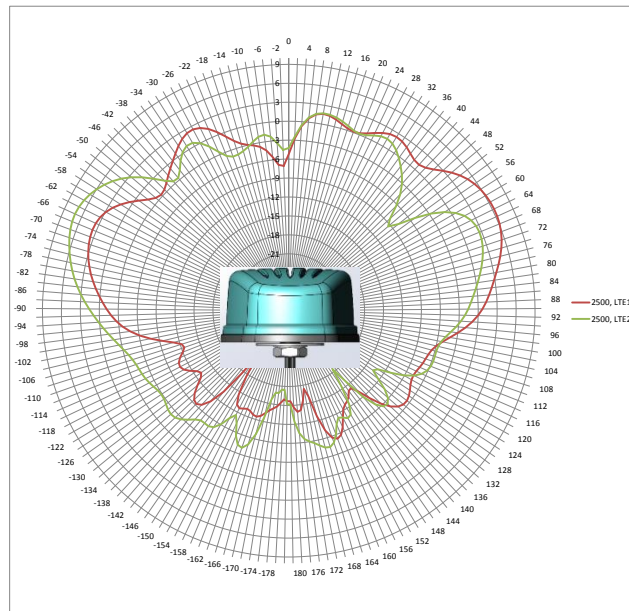
PART NUMBER: GPSMB301, GPSMB302, GPSMB301R, GPSMB302R

CHARTS

LTE antenna radiation pattern at 2500MHz with 2ft metal plate and 4inch cables



Horizontal plot



Vertical plot front view

Issue: 1823

In the effort to improve our products, we reserve the right to make changes judged to be necessary.

CONFIDENTIAL AND PROPRIETARY INFORMATION

This document contains confidential and proprietary information of Pulse Electronics, Inc. (Pulse) and is protected by copyright, trade secret and other state and federal laws. Its receipt or possession does not convey any rights to reproduce, disclose its contents, or to manufacture, use or sell anything it may describe. Reproduction, disclosure or use without specific written authorization of Pulse is strictly forbidden.

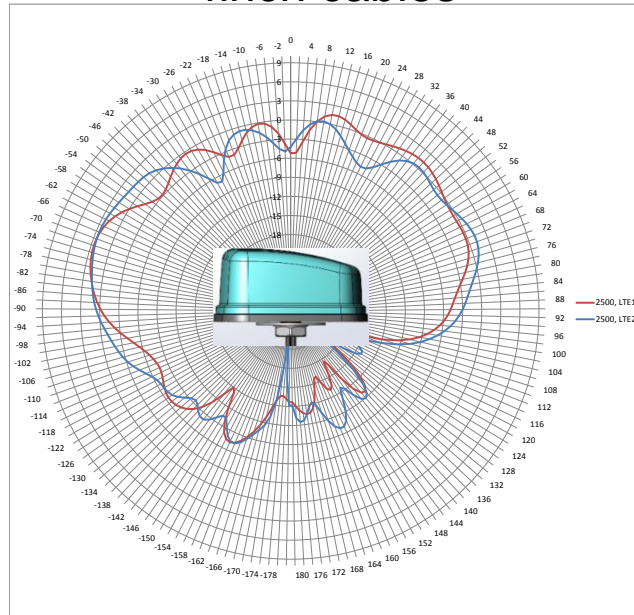
**Description: MiMo LTE, GNSS Vehicle Mount
Antenna**

Series: Panther

**PART NUMBER: GPSMB301, GPSMB302, GPSMB301R,
GPSMB302R**

CHARTS

LTE antenna radiation pattern at 2500MHz with 2ft metal plate and 4inch cables



Vertical plot side view

Issue: 1823

In the effort to improve our products, we reserve the right to make changes judged to be necessary.

CONFIDENTIAL AND PROPRIETARY INFORMATION

This document contains confidential and proprietary information of Pulse Electronics, Inc. (Pulse) and is protected by copyright, trade secret and other state and federal laws. Its receipt or possession does not convey any rights to reproduce, disclose its contents, or to manufacture, use or sell anything it may describe. Reproduction, disclosure or use without specific written authorization of Pulse is strictly forbidden.

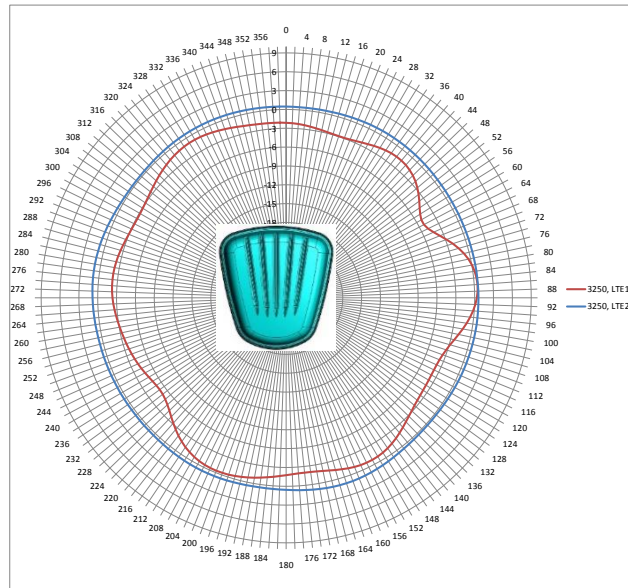
**Description: MiMo LTE, GNSS Vehicle Mount
Antenna**

Series: Panther

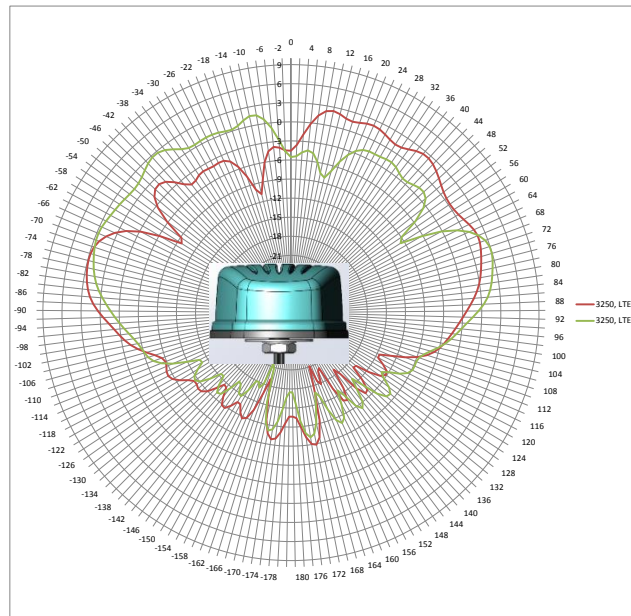
**PART NUMBER: GPSMB301, GPSMB302, GPSMB301R,
GPSMB302R**

CHARTS

LTE antenna radiation pattern at 3250MHz with 2ft metal plate and 4inch cables



Horizontal plot



Vertical plot front view

Issue: 1823

In the effort to improve our products, we reserve the right to make changes judged to be necessary.

CONFIDENTIAL AND PROPRIETARY INFORMATION

This document contains confidential and proprietary information of Pulse Electronics, Inc. (Pulse) and is protected by copyright, trade secret and other state and federal laws. Its receipt or possession does not convey any rights to reproduce, disclose its contents, or to manufacture, use or sell anything it may describe. Reproduction, disclosure or use without specific written authorization of Pulse is strictly forbidden.

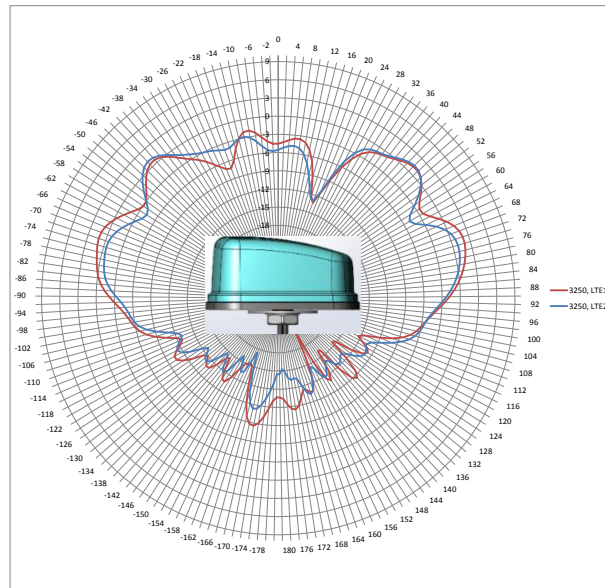
**Description: MiMo LTE, GNSS Vehicle Mount
Antenna**

Series: Panther

**PART NUMBER: GPSMB301, GPSMB302, GPSMB301R,
GPSMB302R**

CHARTS

LTE antenna radiation pattern at 3250MHz with 2ft metal plate and 4inch cables



Vertical plot side view

Issue: 1823

In the effort to improve our products, we reserve the right to make changes judged to be necessary.

CONFIDENTIAL AND PROPRIETARY INFORMATION

This document contains confidential and proprietary information of Pulse Electronics, Inc. (Pulse) and is protected by copyright, trade secret and other state and federal laws. Its receipt or possession does not convey any rights to reproduce, disclose its contents, or to manufacture, use or sell anything it may describe. Reproduction, disclosure or use without specific written authorization of Pulse is strictly forbidden.

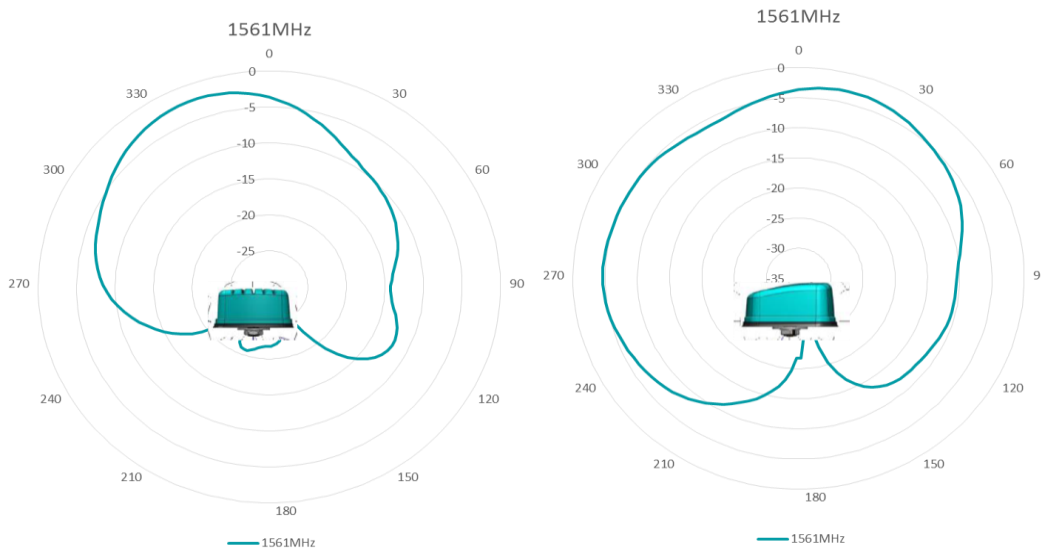
Description: MiMo LTE, GNSS Vehicle Mount Antenna

Series: Panther

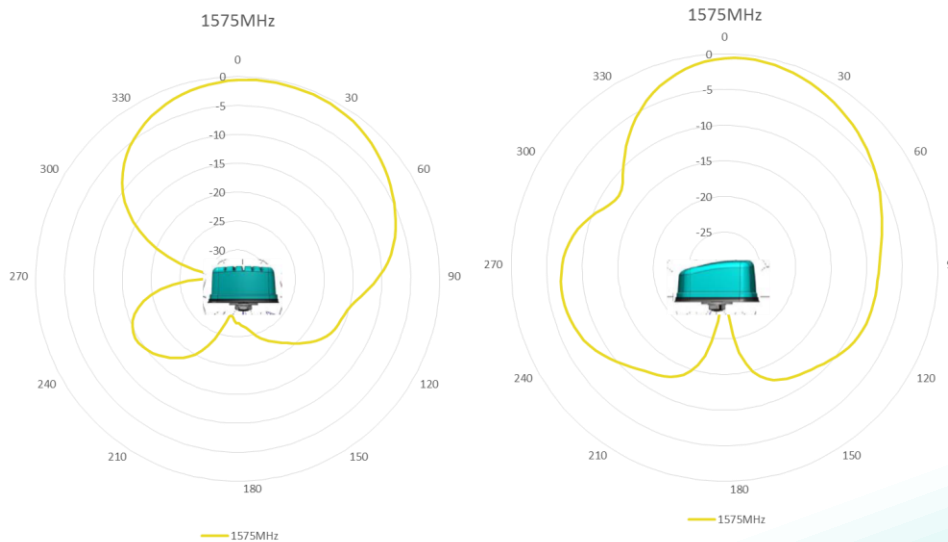
PART NUMBER: GPSMB301, GPSMB302, GPSMB301R, GPSMB302R

CHARTS

BD2 RHCP patterns, measured with 4inch cables in free space



GPS & Galileo RHCP patterns, measured with 4inch cables in free space



Issue: 1823

In the effort to improve our products, we reserve the right to make changes judged to be necessary.

CONFIDENTIAL AND PROPRIETARY INFORMATION

This document contains confidential and proprietary information of Pulse Electronics, Inc. (Pulse) and is protected by copyright, trade secret and other state and federal laws. Its receipt or possession does not convey any rights to reproduce, disclose its contents, or to manufacture, use or sell anything it may describe. Reproduction, disclosure or use without specific written authorization of Pulse is strictly forbidden.

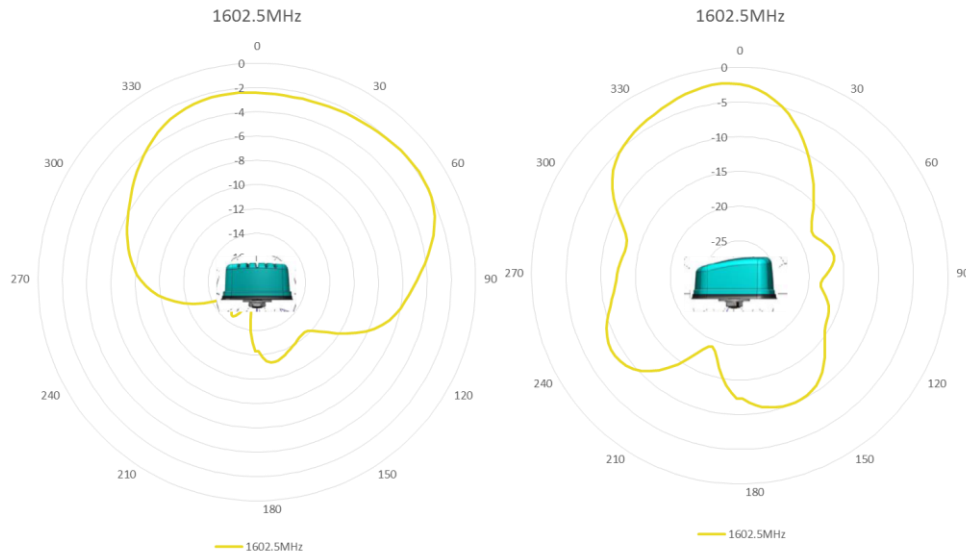
Description: MiMo LTE, GNSS Vehicle Mount Antenna

Series: Panther

PART NUMBER: GPSMB301, GPSMB302, GPSMB301R, GPSMB302R

CHARTS

GLONASS RHCP patterns, measured with 4inch cables in free space



Issue: 1823

In the effort to improve our products, we reserve the right to make changes judged to be necessary.

CONFIDENTIAL AND PROPRIETARY INFORMATION

This document contains confidential and proprietary information of Pulse Electronics, Inc. (Pulse) and is protected by copyright, trade secret and other state and federal laws. Its receipt or possession does not convey any rights to reproduce, disclose its contents, or to manufacture, use or sell anything it may describe. Reproduction, disclosure or use without specific written authorization of Pulse is strictly forbidden.

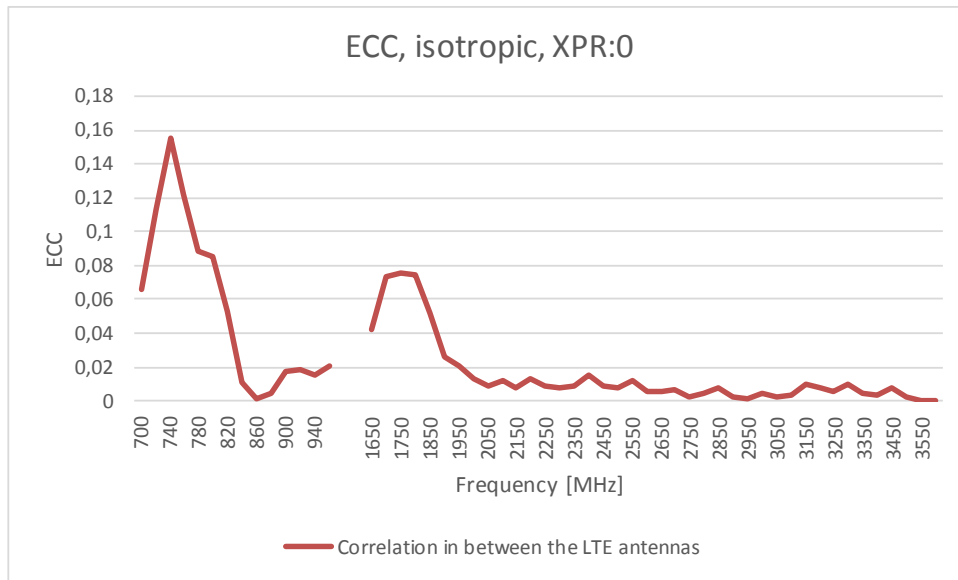
Description: MiMo LTE, GNSS Vehicle Mount Antenna

Series: Panther

PART NUMBER: GPSMB301, GPSMB302, GPSMB301R, GPSMB302R

CHARTS

Envelope correlation coefficient - LTE 1 to LTE 2



**Description: MiMo LTE, GNSS Vehicle Mount
Antenna**

Series: Panther

**PART NUMBER: GPSMB301, GPSMB302, GPSMB301R,
GPSMB302R**

PACKAGING

One antenna pack in one PE bag, 6 antennae in one box



Компания «ЭлектроПласт» предлагает заключение долгосрочных отношений при поставках импортных электронных компонентов на взаимовыгодных условиях!

Наши преимущества:

- Оперативные поставки широкого спектра электронных компонентов отечественного и импортного производства напрямую от производителей и с крупнейших мировых складов;
- Поставка более 17-ти миллионов наименований электронных компонентов;
- Поставка сложных, дефицитных, либо снятых с производства позиций;
- Оперативные сроки поставки под заказ (от 5 рабочих дней);
- Экспресс доставка в любую точку России;
- Техническая поддержка проекта, помощь в подборе аналогов, поставка прототипов;
- Система менеджмента качества сертифицирована по Международному стандарту ISO 9001;
- Лицензия ФСБ на осуществление работ с использованием сведений, составляющих государственную тайну;
- Поставка специализированных компонентов (Xilinx, Altera, Analog Devices, Intersil, Interpoint, Microsemi, Aeroflex, Peregrine, Syfer, Eurofarad, Texas Instrument, Miteq, Cobham, E2V, MA-COM, Hittite, Mini-Circuits, General Dynamics и др.);

Помимо этого, одним из направлений компании «ЭлектроПласт» является направление «Источники питания». Мы предлагаем Вам помощь Конструкторского отдела:

- Подбор оптимального решения, техническое обоснование при выборе компонента;
- Подбор аналогов;
- Консультации по применению компонента;
- Поставка образцов и прототипов;
- Техническая поддержка проекта;
- Защита от снятия компонента с производства.



Как с нами связаться

Телефон: 8 (812) 309 58 32 (многоканальный)

Факс: 8 (812) 320-02-42

Электронная почта: org@eplast1.ru

Адрес: 198099, г. Санкт-Петербург, ул. Калинина, дом 2, корпус 4, литера А.