

### PROTECTION PRODUCTS - EMIClamp®

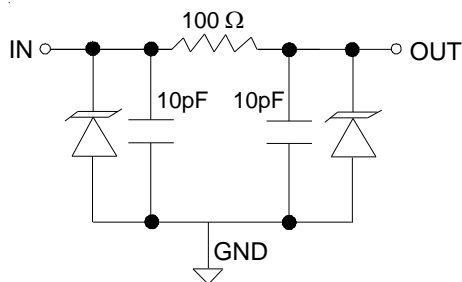
#### Description

The EClamp®2378K is a low pass filter array with integrated TVS diodes. It is designed to suppress unwanted EMI/RFI signals and provide electrostatic discharge (ESD) protection in portable electronic equipment. This state-of-the-art device utilizes solid-state silicon-avalanche technology for superior clamping performance and DC electrical characteristics. They have been optimized for **protection of color LCD panels** in cellular phones and other portable electronics.

The device consists of eight identical circuits comprised of TVS diodes for ESD protection, and a resistor - capacitor network for EMI/RFI filtering. A series resistor value of 100Ω and a capacitance value of 10pF are used to achieve 30dB minimum attenuation from 1.8GHz to 2.5GHz. The TVS diodes provide effective suppression of ESD voltages in excess of ±15kV (air discharge) and ±8kV (contact discharge) per IEC 61000-4-2, level 4.

The EClamp2378K is in a 16-pin SLP3313P16 package. It measures 3.3 x 1.3 x 0.50mm. The leads are spaced at a pitch of 0.4mm and are finished with lead-free NiPdAu. The small package makes it ideal for use in portable electronics such as cell phones, digital still cameras, and PDAs.

#### Circuit Diagram (Each Line)



**Device Schematic (8X)**

#### Features

- ◆ Bidirectional EMI/RFI filter with integrated TVS for ESD protection
- ◆ ESD protection to **IEC 61000-4-2 (ESD) Level 4, ±15kV (air), ±8kV (contact)**
- ◆ Filter performance: 30dB minimum attenuation 1.8GHz to 2.5GHz
- ◆ TVS working voltage: 5V
- ◆ Resistor: 100Ω +/- 15%
- ◆ Typical Capacitance: 20pF (VR = 0V)
- ◆ Protection and filtering for eight lines
- ◆ Solid-state technology

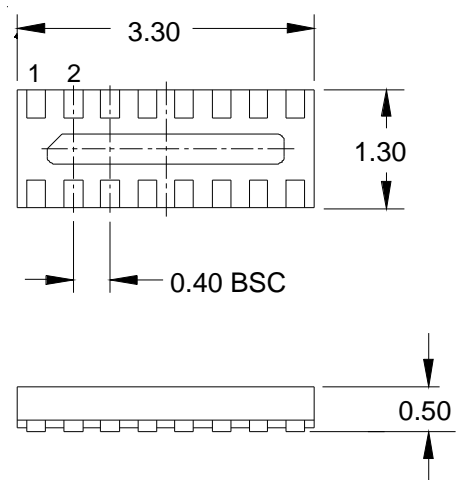
#### Mechanical Characteristics

- ◆ SLP3313P16 16-pin package
- ◆ Pb-Free, Halogen Free, RoHS/WEEE Compliant
- ◆ Nominal Dimensions: 3.3 x 1.3 x 0.50 mm
- ◆ Lead Pitch: 0.4mm
- ◆ Lead finish: NiPdAu
- ◆ Marking : Marking Code
- ◆ Packaging : Tape and Reel per EIA 481

#### Applications

- ◆ Color LCD Protection
- ◆ Cell Phone CCD Camera Lines
- ◆ Clamshell Cell Phones

#### Package Configuration



**16 Pin SLP package (Bottom Side View)  
Nominal Dimensions in mm**

## PROTECTION PRODUCTS

### Maximum Ratings

| Rating   | Symbol    | Value            | Units |
|--|-----------|------------------|-------|
| ESD per IEC 61000-4-2 (Air)<br>ESD per IEC 61000-4-2 (Contact) | $V_{ESD}$ | +/- 17<br>+/- 12 | kV    |
| Junction Temperature   | $T_J$     | 125              | °C    |
| Operating Temperature  | $T_{op}$  | -40 to +85       | °C    |
| Storage Temperature  | $T_{STG}$ | -55 to +150      | °C    |

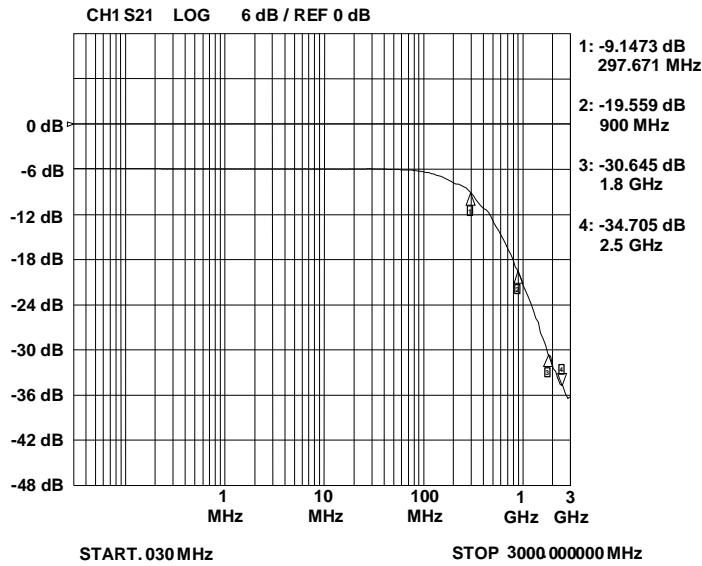
### Electrical Characteristics (T = 25°C)

| Parameter                     | Symbol    | Conditions   | Minimum | Typical | Maximum | Units |
|-------------------------------|-----------|--|---------|---------|---------|-------|
| TVS Reverse Stand-Off Voltage | $V_{RWM}$ |  |         |         | 5       | V     |
| TVS Reverse Breakdown Voltage | $V_{BR}$  | $I_t = 1mA$  | 6       | 8       | 10      | V     |
| TVS Reverse Leakage Current   | $I_R$     | $V_{RWM} = 3.0V$                                     |         |         | 0.5     | μA    |
| Total Series Resistance       | R         | Each Line  | 85      | 100     | 115     | Ohms  |
| Total Capacitance             | $C_{in}$  | Input to Gnd,<br>Each Line<br>$V_R = 0V, f = 1MHz$   | 16      | 20      | 24      | pF    |
| Total Capacitance             | $C_{in}$  | Input to Gnd,<br>Each Line<br>$V_R = 2.5V, f = 1MHz$ | 9       | 11      | 13      | pF    |

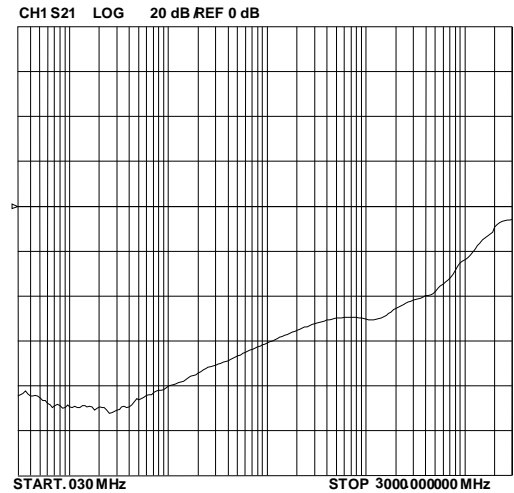
## PROTECTION PRODUCTS

### Typical Characteristics

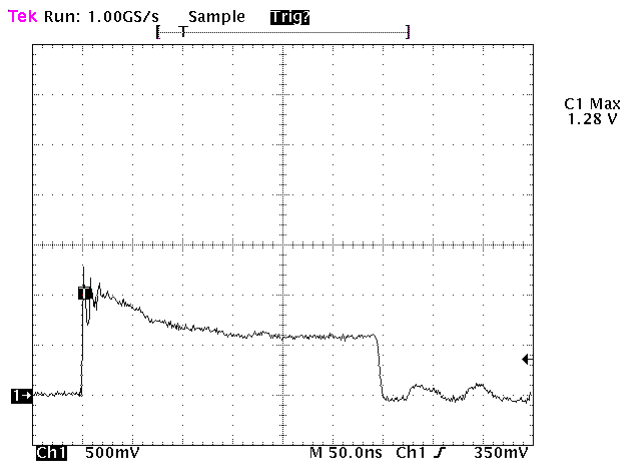
#### Typical Insertion Loss S21 (Each Line)



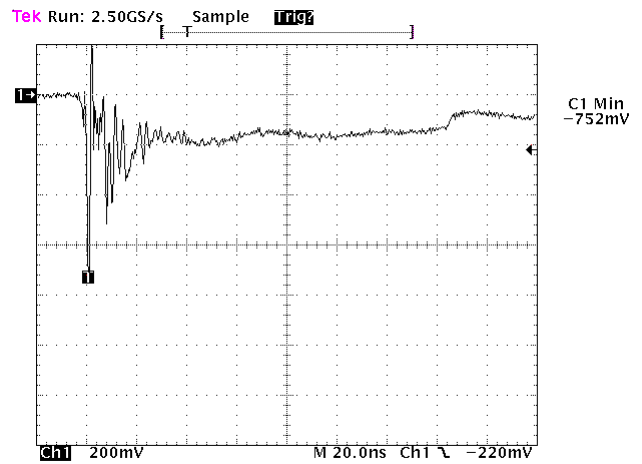
#### Analog Crosstalk (Each Line)



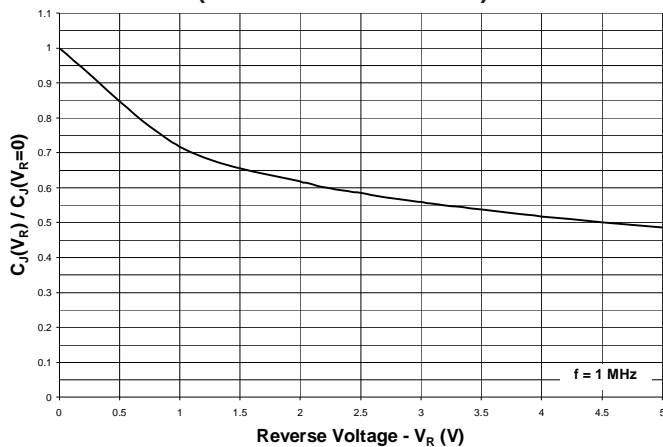
#### ESD Clamping (+8kV Contact)



#### ESD Clamping (-8kV Contact)



#### Capacitance vs. Reverse Voltage (Normalized to 0 volts)



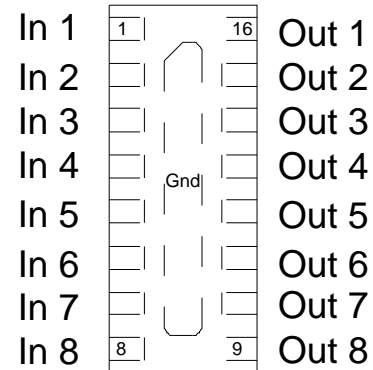
## PROTECTION PRODUCTS

### Applications Information

#### Device Connection

The EClamp2378K is comprised of eight identical circuits each consisting of a low pass filter for EMI/RFI suppression and dual TVS diodes for ESD protection. The device is in a 16-pin SLP package. Electrical connection is made to the 16 pins located at the bottom of the device. A center tab serves as the ground connection. The device has a flow through design for easy layout. Pin connections are noted in Figure 1. All path lengths should be kept as short as possible to minimize the effects of parasitic inductance in the board traces. Recommendations for the ground connection are given below.

**Figure 1 - Pin Identification and Configuration (Top Side View)**



| Pin        | Identification |
|------------|----------------|
| 1 - 8      | Input Lines    |
| 9 - 16     | Output Lines   |
| Center Tab | Ground         |

#### Ground Connection Recommendation

Parasitic inductance present in the board layout will affect the filtering performance of the device. As frequency increases, the effect of the inductance becomes more dominant. This effect is given by Equation 1.

**Equation 1: The Impedance of an Inductor at Frequency XLF**

$$X_{LF}(L, f) = 2 * \pi * f * L$$

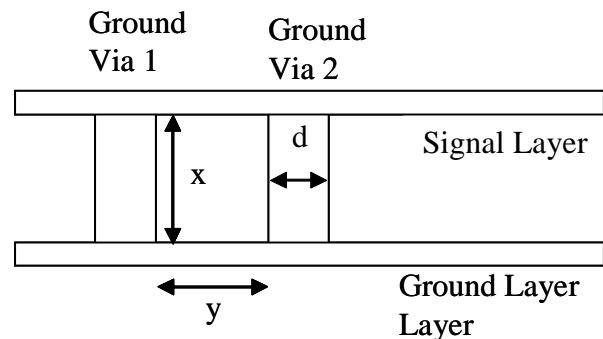
Where:

L = Inductance (H)

f = Frequency (Hz)

Via connections to the ground plane form rectangular wire loops or ground loop inductance as shown in Figure 2. Ground loop inductance can be reduced by using multiple vias to make the connection to the ground plane. Bringing the ground plane closer to the signal layer (preferably the next layer) also reduces ground loop inductance. Multiple vias in the device ground pad will result in a lower inductive ground loop over two exterior vias. Vias with a diameter d are separated by a distance y run between layers separated by a distance x. The inductance of the loop path is given by Equation 2. Thus, decreasing distance x and y will reduce the loop inductance and result in better high frequency filter characteristics.

**Figure 2 - Inductance of Rectangular Wire Loops**



**Equation 2: Inductance of Rectangular Wire Loop**

$$L_{RECT}(d, x, y) = 10.16 * 10^{-9} * \left[ x * \ln\left[\frac{2*y}{d}\right] + y * \ln\left[\frac{2*x}{d}\right] \right]$$

Where:

d = Diameter of the wire (in)

x = Length of wire loop (in)

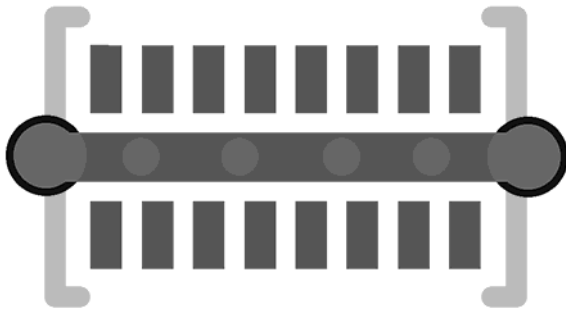
y = Breadth of wire loop (in)

## PROTECTION PRODUCTS

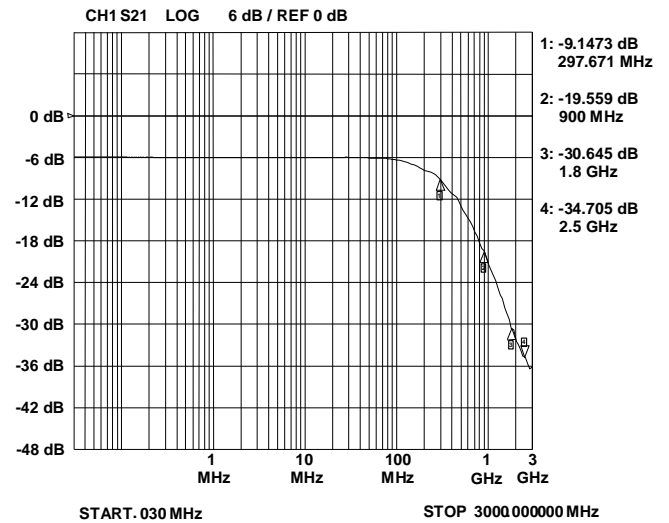
### Applications Information

Figure 3 shows the recommended device layout. The ground pad vias have a diameter of 0.008 inches (0.20 mm) while the two external vias have a diameter of 0.010 inches (0.250mm). The internal vias are spaced approximately evenly from the center of the pad. The designer may choose to use more vias with a smaller diameter (such as 0.005 inches or 0.125mm) since changing the diameter of the via will result in little change in inductance (i.e. the log function in Equation 2 is highly insensitive to parameter  $d$ ). Figure 4 shows a typical insertion loss ( $S_{21}$ ) plot for the device using Semtech's filter evaluation board with 50 Ohm traces and the recommended via configuration. Figure 5 shows a typical insertion loss ( $S_{21}$ ) plot using a similar board without the internal ground pad vias. The result is a more inductive ground loop. Note the "hump" at a frequency of 2.5GHz. This is the resonant frequency of the higher ground loop inductance.

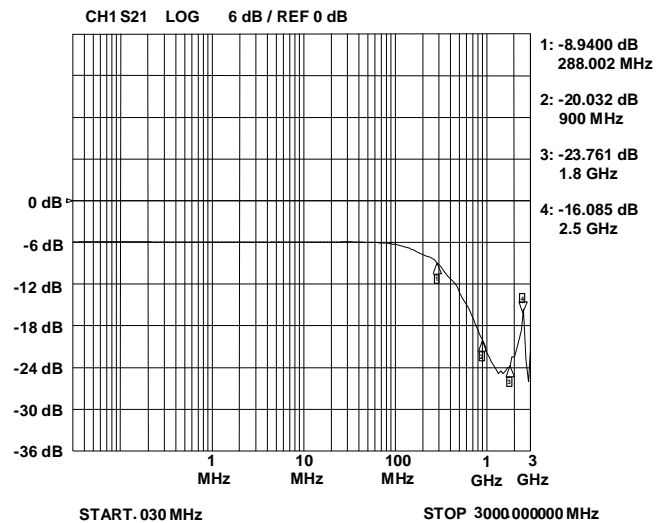
**Figure 3 - Recommended Layout Using Ground Vias**



**Figure 4 - Filter Characteristics Using Recommended Layout with Internal Vias**

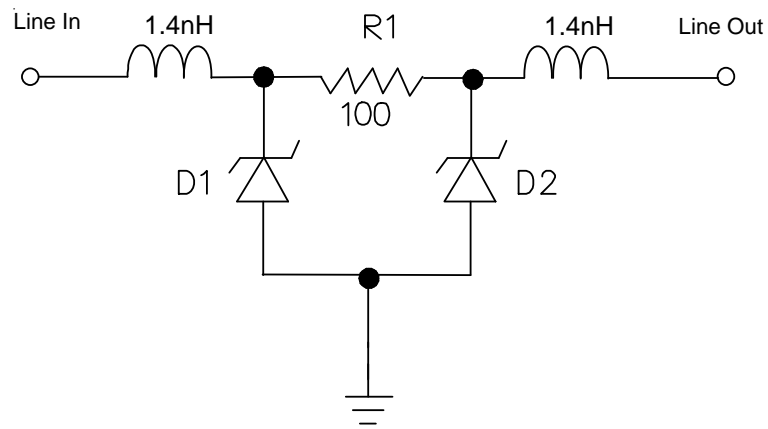


**Figure 5 - Filter Characteristics Using Layout without Internal Ground Vias**



## PROTECTION PRODUCTS

### Applications Information - Spice Model

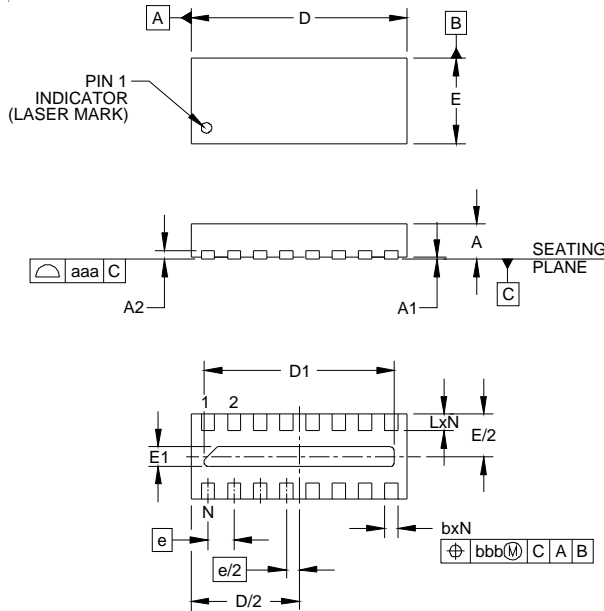


**EClamp2378K Spice Model**

| EClamp2378K Spice Parameters |       |          |          |
|------------------------------|-------|----------|----------|
| Parameter                    | Unit  | D1 (TVS) | D2 (TVS) |
| IS                           | Amp   | 2E-15    | 2E-15    |
| BV                           | Volt  | 7.42     | 7.42     |
| VJ                           | Volt  | 0.775    | 0.775    |
| RS                           | Ohm   | 1.00     | 1.00     |
| IBV                          | Amp   | 1E-3     | 1E-3     |
| CJO                          | Farad | 9.8E-12  | 9.8E-12  |
| TT                           | sec   | 2.541E-9 | 2.541E-9 |
| M                            | --    | 0.246    | 0.246    |
| N                            | --    | 1.1      | 1.1      |
| EG                           | eV    | 1.11     | 1.11     |

## PROTECTION PRODUCTS

### Outline Drawing - SLP3313P16

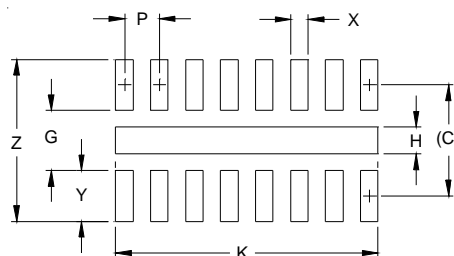


| DIM | DIMENSIONS |      |      |             |      |       |
|-----|------------|------|------|-------------|------|-------|
|     | INCHES     |      |      | MILLIMETERS |      |       |
|     | MIN        | NOM  | MAX  | MIN         | NOM  | MAX   |
| A   | .018       | .020 | .022 | 0.45        | 0.50 | 0.55  |
| A1  | .000       | .001 | .002 | 0.00        | 0.02 | 0.05  |
| A2  | (.005)     |      |      | (0.13)      |      |       |
| b   | .006       | .008 | .010 | 0.15        | 0.20 | 0.25  |
| D   | .128       | .130 | .133 | 3.25        | 3.30 | 3.375 |
| D1  | .110       | .114 | .118 | 2.80        | 2.90 | 3.00  |
| E   | .049       | .051 | .054 | 1.25        | 1.30 | 1.375 |
| E1  | .008       | .012 | .016 | 0.20        | 0.30 | 0.40  |
| e   | .016 BSC   |      |      | 0.40 BSC    |      |       |
| L   | .008       | .010 | .012 | 0.20        | 0.25 | 0.30  |
| N   | 16         |      |      | 16          |      |       |
| aaa | .003       |      |      | 0.08        |      |       |
| bbb | .004       |      |      | 0.10        |      |       |

**NOTES:**

1. CONTROLLING DIMENSIONS ARE IN MILLIMETERS (ANGLES IN DEGREES).
2. COPLANARITY APPLIES TO THE EXPOSED PAD AS WELL AS THE TERMINALS

### Land Pattern - SLP3313P16



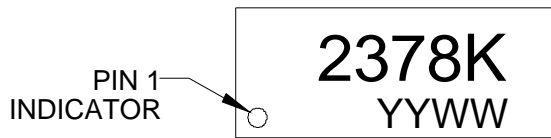
| DIM | DIMENSIONS |             |
|-----|------------|-------------|
|     | INCHES     | MILLIMETERS |
| C   | (.050)     | (1.27)      |
| G   | .027       | 0.69        |
| H   | .012       | 0.30        |
| K   | .118       | 3.00        |
| P   | .016       | 0.40        |
| X   | .008       | 0.20        |
| Y   | .023       | 0.58        |
| Z   | .073       | 1.85        |

**NOTES:**

1. CONTROLLING DIMENSIONS ARE IN MILLIMETERS (ANGLES IN DEGREES).
2. THIS LAND PATTERN IS FOR REFERENCE PURPOSES ONLY. CONSULT YOUR MANUFACTURING GROUP TO ENSURE YOUR COMPANY'S MANUFACTURING GUIDELINES ARE MET.

## PROTECTION PRODUCTS

### Marking



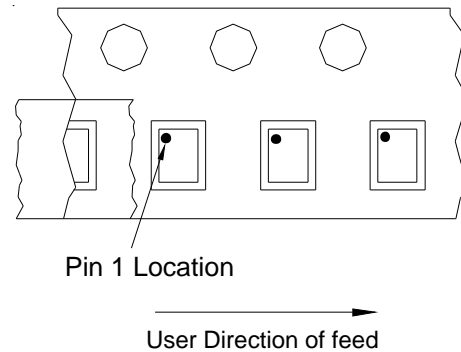
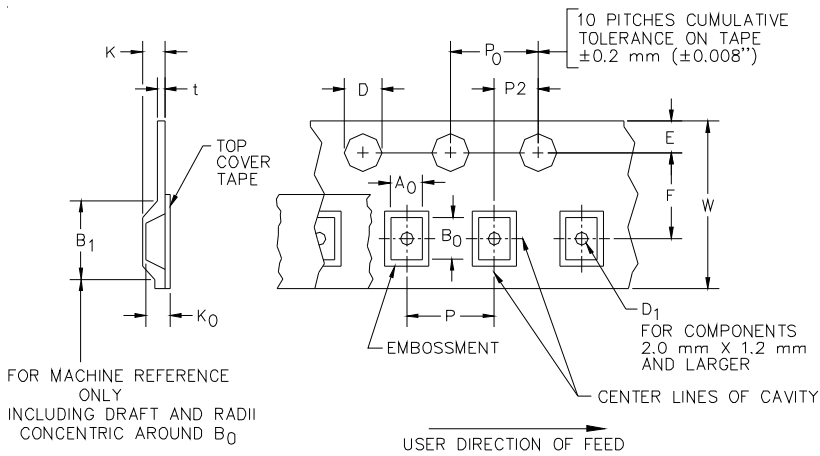
### Ordering Information

| Part Number     | Qty per Reel | Reel Size |
|-----------------|--------------|-----------|
| EClamp2378K.TCT | 3000         | 7 Inch    |

EMIClamp and EClamp are marks of Semtech Corporation

Note: YYWW = Date Code

### Tape and Reel Specification



### Device Orientation in Tape

| A0              | B0              | K0              |
|-----------------|-----------------|-----------------|
| 1.51 +/-0.10 mm | 3.51 +/-0.10 mm | 0.66 +/-0.10 mm |

| Tape Width | B, (Max)         | D   | D1                        | E                           | F                          | K (MAX)          | P                          | P0                         | P2                        | T(MAX)           | W  |
|------------|------------------|---|---------------------------|-----------------------------|----------------------------|------------------|----------------------------|----------------------------|---------------------------|------------------|--|
| 12 mm      | 8.2 mm<br>(.476) | 1.5 + 0.1 mm<br>- 0.0 mm<br>(0.59 +.005<br>-.000) | 1.0 mm<br>±0.05<br>(.039) | 1.750±.10 mm<br>(.069±.004) | 5.5±0.05 mm<br>(.217±.002) | 4.5 mm<br>(.177) | 4.0±0.1 mm<br>(.157±.00-4) | 4.0±0.1 mm<br>(.157±.00-4) | 2.0±0.05mm<br>(.079±.002) | 0.4 mm<br>(.016) | 12.0 mm<br>+ 0.3 mm<br>- 0.1 mm<br>(.472±.012) |

### Contact Information

Semtech Corporation  
 Protection Products Division  
 200 Flynn Rd., Camarillo, CA 93012  
 Phone: (805)498-2111 FAX (805)498-3804





Компания «ЭлектроПласт» предлагает заключение долгосрочных отношений при поставках импортных электронных компонентов на взаимовыгодных условиях!

Наши преимущества:

- Оперативные поставки широкого спектра электронных компонентов отечественного и импортного производства напрямую от производителей и с крупнейших мировых складов;
- Поставка более 17-ти миллионов наименований электронных компонентов;
- Поставка сложных, дефицитных, либо снятых с производства позиций;
- Оперативные сроки поставки под заказ (от 5 рабочих дней);
- Экспресс доставка в любую точку России;
- Техническая поддержка проекта, помощь в подборе аналогов, поставка прототипов;
- Система менеджмента качества сертифицирована по Международному стандарту ISO 9001;
- Лицензия ФСБ на осуществление работ с использованием сведений, составляющих государственную тайну;
- Поставка специализированных компонентов (Xilinx, Altera, Analog Devices, Intersil, Interpoint, Microsemi, Aeroflex, Peregrine, Syfer, Eurofarad, Texas Instrument, Miteq, Cobham, E2V, MA-COM, Hittite, Mini-Circuits, General Dynamics и др.);

Помимо этого, одним из направлений компании «ЭлектроПласт» является направление «Источники питания». Мы предлагаем Вам помощь Конструкторского отдела:

- Подбор оптимального решения, техническое обоснование при выборе компонента;
- Подбор аналогов;
- Консультации по применению компонента;
- Поставка образцов и прототипов;
- Техническая поддержка проекта;
- Защита от снятия компонента с производства.



#### Как с нами связаться

**Телефон:** 8 (812) 309 58 32 (многоканальный)

**Факс:** 8 (812) 320-02-42

**Электронная почта:** [org@eplast1.ru](mailto:org@eplast1.ru)

**Адрес:** 198099, г. Санкт-Петербург, ул. Калинина, дом 2, корпус 4, литера А.