

# DS-520AN

## 802.11n Wireless & Gigabit Ethernet USB Device Server Including 802.1X Enterprise Security



Easily & Securely Connect and Share Virtually any USB Device on Enterprise Networks

Office equipment such as USB scanners, multi-function printers (MFPs), dongles, hard disk drives, and cameras etc. frequently lack a wireless interface thus making them unavailable to connected devices such as computers, tablets, and smartphones. The DS-520AN Wireless USB Device Server replaces the USB cable with an enterprise-secure wireless or wired LAN connection.

By using the DS-520AN, users can overcome the restriction in the maximum length (5m) of USB cables because the USB device can be accessed from any location remotely over the network. This provides increased flexibility and ease of use.

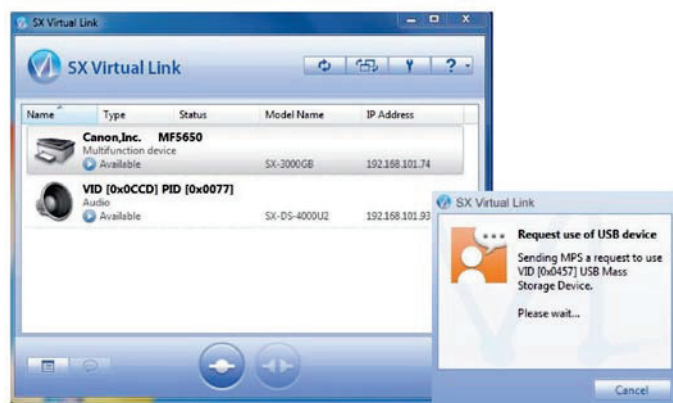
IT infrastructure procurement costs can be reduced by sharing USB devices such as office printers across multiple users in a networked environment using a DS-520AN. Multiple users can access the same USB device sequentially which is managed by Silex SX Virtual Link Software.

### What is a USB Device Server?

A USB Device Server such as the DS-520AN is a network adapter that uses Silex USB Virtual Link Technology® to make USB devices "network-compatible". Virtually any USB device that users can think of can thus be used over a network in exactly the same way as if it were physically connected via a USB cable. Existing drivers and applications can continue to be used without requiring any changes.

### SX Virtual Link

SX Virtual Link (SVL) is application software for the Silex USB Virtual Link (UVL) Technology®. Any networked USB devices connected to a USB Device Server can be remotely managed through SVL.



- You can remotely operate USB devices (connect, disconnect, etc.)
- You can send a disconnect request when the shared USB device is in use.

### Functions

#### 1 Enterprise Security

Security for professional use that takes IT security beyond standard encryption and which can be relied on by business users:

- Encryption: AES
- IEEE 802.1X:
  - EAP-TLS
  - EAP-TTLS
  - PEAP
  - EAP-FAST
  - LEAP

#### 2 Isochronous data-transfer mode

Devices such as industrial USB cameras (full- and high-speed) and audio devices such as loudspeakers that require continuous and almost real-time data transfer can also be used in a wireless network environment.\*

\*The use of isochronous USB devices is very complex and not every device can be used in the wireless network. Compatibility validation is strongly recommended.

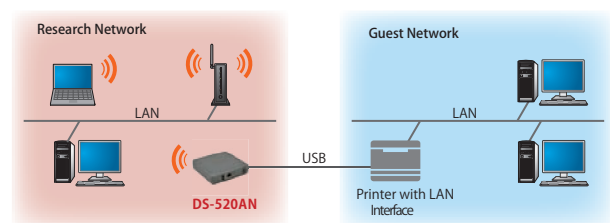
#### 3 Wireless print server

The DS-520AN can be used as a wireless print server. The "RAW" and "LPR" network print protocols are supported.

Furthermore, printers with fitted LAN cards can have an extra WLAN interface added. This allows the printer to be used by several people, even from different network segments.

Example:

Printer can be used from separate network segments (e.g. research / open guest network) thanks to additional interface.



This example shows the use of the DS-520AN as a wireless resource. The DS-520AN can also be used as a second LAN interface (wired). It is not possible to simultaneously use it as a WLAN and LAN print server.

## sESS(silex Embedded Software Suite)

The USB Device Server connection functions, as in SX Virtual Link, can also be provided by Silex as SDK client software. In this way, the functions can be integrated in client's own applications. In addition to the Windows SDK, there is also an iOS and an Android SDK available so that the USB device server can also be used from smartphones and tablet computers.

※ The Windows version of the SDK can be downloaded free of charge from Silex' website. For the other versions, please contact the Silex Sales Team.

## Other USB Device Server

### Basic Model USB 2.0 Device Server



#### DS-510

- 10BASE-T, 100BASE-TX, 1000BASE-T (auto-detection)
- USB2.0(Type-A) x 2 Port
- Isochronous data-transfer mode

### High-End Model USB 3.0 Device Server with Enterprise-Security



#### DS-600

- 10BASE-T, 100BASE-TX, 1000BASE-T (auto-detection)
- USB 3.0 (Typ-A) x 1 Port, USB 2.0 (Typ-A) x 1 Port
- Isochronous data-transfer mode
- Security: Authentication with IEEE802.1X

## USB Device Server comparison

Product name	DS-520AN	DS-510	DS-600
Wired LAN	10BASE-T/100BASE-TX/1000BASE-T		
WLAN	○ (IEEE 802.11 a/b/g/n)	×	×
Device Server feature	USB2.0	USB2.0	USB3.0 / USB2.0
Isochronous Data Transfer	○ (Full-Speed / Hi-Speed)		
Automatic Printer Connect	○	○	○
IEEE 802.1X	○ (EAP-TLS, PEAP, EAP-TTLS, LEAP/EAP-FAST)	×	○ (EAP-TLS, PEAP, EAP-TTLS)
NAS feature	×	×	○ (FAT12, FAT16, FAT32)
LAN Data encryption	×	×	○ (AES256bit)
USB Password feature	×	×	○
Print Server Feature	○	○	○
ECO-Mode feature	○	○	○

## Specifications

Product Name	DS-520AN
LAN	
Interface	RJ-45 x 1 Port
Speed	10BASE-T/100BASE-TX/1000BASE-T(auto-detection)
WLAN	
Standards	IEEE 802.11a/b/g/n 2Tx2R
Encryption	Open, WEP (64-bit/128-bit) TKIP AES 802.1X(EAP-TLS/EAP-TTLS/PEAP/LEAP/EAP-FAST)
Channels	2.4GHz : Ch 1 ~ 11 5GHz : Ch 36 ~ 64 and Ch 100 ~ 140
Module	Integrated 2.4GHz/5GHz WLAN Module
Smart-Wireless-Setup	Push-Button Method, PIN Method
Device Interface	
Buttons	Factory Default Settings, Smart-Wireless Setup
Device Interface	High-Speed Type A x 1 USB Port
Software	
Operating Systems Supported	Windows 10 (32/64-bit), Windows 8/8.1 (32/64-bit) Windows 7 (32/64-bit), Windows Server 2012R2, Windows Server 2012, Windows Server 2008R2, Windows Server 2008 (32/64-bit) MAC OS X Power PC Version: 10.3.x ~ 10.5.x MAC OS X Intel Version: 10.4.4 ~ 10.10.x
Protocols Supported	TCP/IP
Configuration	Device Server Setup, Web Browser
Dimensions	100 mm x 100 mm x 25.5 mm
Weight	118 g
Environment	Operating: Temperature: -10 ~ 50 Degrees C Humidity: 20 ~ 95 %RH (non-condensing) Storage: Temperature: -10 ~ 40 Degrees C Humidity: 20 ~ 95 %RH (non-condensing)
Power Supply	5.5W (DC 5V, 1.1A) Without USB Power *
Regulatory Compliance	VCCI Class B / FCC Class B / ICES-003 Class B / CE Class B / RoHS
Software	SX Virtual Link (Windows) Version 4.0.1 or Higher SX Virtual Link (Mac) Version 3.17.0 or Higher
Enclosed Accessories	Device, AC Adapter, Setup Guide, GPL-License, Guarantee Information
EAN Code	4944406005411
Part Number US Model	DS-520AN-US

\* Supply currents of bus power for USB 2.0: 500mA

To operate a USB device that comes with an AC adapter, it is recommended to use the enclosed A C adapter for best performance.

silex technology is a registered trademark of silex technology, Inc. Other product or brand names may be registered trademarks or trademarks of their respective owners. Technical information and specifications are subject to change without notice. © 2017 silex technology, Inc. All rights reserved.

## silex global sales & support locations



**USA Office**  
silex technology america, Inc.  
+1-801-747-0656  
U.S. toll free 866-765-8761  
www.silexamerica.com  
sales@silexamerica.com

**Europe**  
silex technology europe, GmbH  
+49-2151-65009-10  
Germany toll free 0800-7453938  
www.silexeurope.com  
contact@silexeurope.com

**Corporate Headquarters**  
silex technology, Inc.  
+81-774-98-3781  
www.silex.jp  
support@silex.jp



JQA-QMA2667  
silex technology, Inc.



JQA-EM3813  
silex technology, Inc.  
Design & Manufacturing Center

PN: 141-20143-100

REV A. 20170303



Компания «ЭлектроПласт» предлагает заключение долгосрочных отношений при поставках импортных электронных компонентов на взаимовыгодных условиях!

Наши преимущества:

- Оперативные поставки широкого спектра электронных компонентов отечественного и импортного производства напрямую от производителей и с крупнейших мировых складов;
- Поставка более 17-ти миллионов наименований электронных компонентов;
- Поставка сложных, дефицитных, либо снятых с производства позиций;
- Оперативные сроки поставки под заказ (от 5 рабочих дней);
- Экспресс доставка в любую точку России;
- Техническая поддержка проекта, помощь в подборе аналогов, поставка прототипов;
- Система менеджмента качества сертифицирована по Международному стандарту ISO 9001;
- Лицензия ФСБ на осуществление работ с использованием сведений, составляющих государственную тайну;
- Поставка специализированных компонентов (Xilinx, Altera, Analog Devices, Intersil, Interpoint, Microsemi, Aeroflex, Peregrine, Syfer, Eurofarad, Texas Instrument, Miteq, Cobham, E2V, MA-COM, Hittite, Mini-Circuits, General Dynamics и др.);

Помимо этого, одним из направлений компании «ЭлектроПласт» является направление «Источники питания». Мы предлагаем Вам помощь Конструкторского отдела:

- Подбор оптимального решения, техническое обоснование при выборе компонента;
- Подбор аналогов;
- Консультации по применению компонента;
- Поставка образцов и прототипов;
- Техническая поддержка проекта;
- Защита от снятия компонента с производства.



#### Как с нами связаться

**Телефон:** 8 (812) 309 58 32 (многоканальный)

**Факс:** 8 (812) 320-02-42

**Электронная почта:** [org@eplast1.ru](mailto:org@eplast1.ru)

**Адрес:** 198099, г. Санкт-Петербург, ул. Калинина, дом 2, корпус 4, литера А.