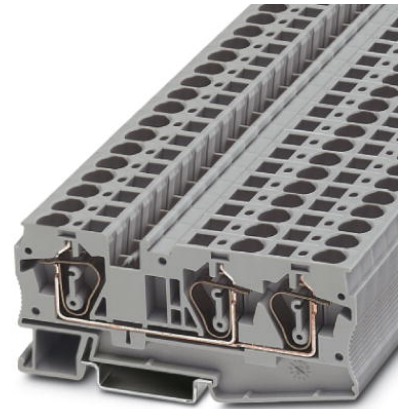


## ST 6-TWIN BU


Order No.: 3036479

The illustration shows version ST 6-TWIN in gray

<http://eshop.phoenixcontact.de/phoenix/treeViewClick.do?UID=3036479>

Feed-through modular terminal block, Type of connection: Spring-cage connection, Cross section: 0.2 mm<sup>2</sup> - 10 mm<sup>2</sup>, AWG 24 - 8, Width: 8.2 mm, Color: blue, Mounting type: NS 35/7.5, NS 35/15

### Commercial data

|                          |  |
|--------------------------|--|
| GTIN (EAN)               | <br>4 017918 886820 |
| sales group              | A630   |
| Pack                     | 50 pcs.  |
| Customs tariff           | 85369010   |
| Catalog page information | Page 83 (CL-2009)  |

### Product notes

WEEE/RoHS-compliant since:  
01/01/2003

<http://www.download.phoenixcontact.com>  
Please note that the data given here has been taken from the online catalog. For comprehensive information and data, please refer to the user documentation. The General Terms and Conditions of Use apply to Internet downloads.

### Technical data

#### General

|                       |      |
|-----------------------|------|
| Number of levels      | 1    |
| Number of connections | 3    |
| Color                 | blue |
| Insulating material   | PA   |

|                                    |    |
|------------------------------------|----|
| Inflammability class acc. to UL 94 | V0 |
|------------------------------------|----|

**Dimensions**

|                  |         |
|------------------|---------|
| Width            | 8.2 mm  |
| Length           | 90.5 mm |
| Height NS 35/7.5 | 43.5 mm |
| Height NS 35/15  | 51 mm   |

**Technical data**

|                                  |   |
|----------------------------------|---|
| Maximum load current             | 52 A (with 10 mm <sup>2</sup> conductor cross section)  |
| Rated surge voltage              | 8 kV  |
| Pollution degree                 | 3   |
| Surge voltage category           | III   |
| Insulating material group        | I   |
| Connection in acc. with standard | IEC 60947-7-1   |
| Nominal current I <sub>N</sub>   | 41 A (the maximum load current must not be exceeded by the total current of all connected conductors) |
| Nominal voltage U <sub>N</sub>   | 1000 V  |
| Open side panel                  | ja  |

**Connection data**

|   |                      |
|---|----------------------|
| Conductor cross section solid min.  | 0.2 mm <sup>2</sup>  |
| Conductor cross section solid max.  | 10 mm <sup>2</sup>   |
| Conductor cross section stranded min.   | 0.2 mm <sup>2</sup>  |
| Conductor cross section stranded max.   | 6 mm <sup>2</sup>    |
| Conductor cross section AWG/kcmil min.  | 24                   |
| Conductor cross section AWG/kcmil max   | 8                    |
| Conductor cross section stranded, with ferrule without plastic sleeve min.              | 0.25 mm <sup>2</sup> |
| Conductor cross section stranded, with ferrule without plastic sleeve max.              | 6 mm <sup>2</sup>    |
| Conductor cross section stranded, with ferrule with plastic sleeve min.                 | 0.25 mm <sup>2</sup> |
| Conductor cross section stranded, with ferrule with plastic sleeve max.                 | 6 mm <sup>2</sup>    |
| 2 conductors with same cross section, stranded, TWIN ferrules with plastic sleeve, min. | 0.5 mm <sup>2</sup>  |
| 2 conductors with same cross section, stranded, TWIN ferrules with plastic sleeve, max. | 1.5 mm <sup>2</sup>  |

|                           |                        |
|---------------------------|------------------------|
| Type of connection        | Spring-cage connection |
| Stripping length          | 12 mm                  |
| Internal cylindrical gage | A5                     |

### Certificates / Approvals



|                   |                                     |
|-------------------|-------------------------------------|
| Certification     | CB, CSA, CUL, GL, GOST, UL, VDE-PZI |
| Certification Ex: | IECEX, KEMA-EX                      |

### Accessories

| Item            | Designation | Description   |
|-----------------|-------------|---|
| <b>Assembly</b> |             |   |
| 3036767         | D-ST 6-TWIN | End cover, Length: 90.5 mm, Width: 2.2 mm, Height: 43.5 mm, Color: gray |

### Bridges

|         |          |   |
|---------|----------|---|
| 3030284 | FBS 2-8  | Plug-in bridge, Number of positions: 2, Color: red  |
| 3030297 | FBS 3-8  | Plug-in bridge, Number of positions: 3, Color: red  |
| 3030307 | FBS 4-8  | Plug-in bridge, Number of positions: 4, Color: red  |
| 3030310 | FBS 5-8  | Plug-in bridge, Number of positions: 5, Color: red  |
| 3032470 | FBS 6-8  | Plug-in bridge, Number of positions: 6, Color: red  |
| 3030323 | FBS 10-8 | Plug-in bridge, Number of positions: 10, Color: red |

### Marking

|         |                        |   |
|---------|------------------------|---|
| 1052125 | ZB 8,LGS:1-9           | Zack marker strip, printed horizontally: 9-section, with consecutive numbers 1 -9   |
| 1052015 | ZB 8,LGS:FORTL.ZAHLEN  | Zack marker strip, 10-section, printed horizontally: with the numbers 1 - 10, 11 - 20 and so on up to 491 - 500, color: white       |
| 1052413 | ZB 8,LGS:L1-N,PE       | Zack strip, printed horizontally, strips with 10 labels, L1, L2, L3, N, PE, L1, L2, L3, N, PE, color: white                         |
| 1052028 | ZB 8,QR:FORTL.ZAHLEN   | Zack marker strip, 10-section, printed vertically: with consecutive numbers 1 - 10, 11 - 20, and so on up to 91 - 100, color: white |
| 1052044 | ZB 8,QR:GLEICHE ZAHLEN | Zack strip, 10-section, printed vertically: with identical numbers, 1/1/1, 2/2/2 etc. up to 100/100/100, color: white               |

|         |                        |  |
|---------|------------------------|--|
| 5062483 | ZB 8/BU-100:UNBEDRUCKT | Zack strip, unprinted: 10-section, for individual labeling with M-PEN, ZB-T or CMS system, large batch, sufficient for labeling 1000 terminal blocks, color: blue                                |
| 5062496 | ZB 8/GN-100:UNBEDRUCKT | Zack strip, unprinted: 10-section, for individual labeling with M-PEN, ZB-T or CMS system, large batch, sufficient for labeling 1000 terminal blocks, color: green                               |
| 5062506 | ZB 8/RD-100:UNBEDRUCKT | Zack strip, unprinted: 10-section, for individual labeling with M-PEN, ZB-T or CMS system, large batch, sufficient for labeling 1000 terminal blocks, color: red                                 |
| 5060896 | ZB 8/WH-100:UNBEDRUCKT | Zack strip, unprinted: 10-section, for individual labeling with M-PEN, ZB-T or CMS system, large batch, sufficient for labeling 1000 terminal blocks, terminal width: 8.2 mm, color: White       |
| 5062519 | ZB 8/YE-100:UNBEDRUCKT | Zack strip, unprinted: 10-section, for individual labeling with M-PEN, ZB-T or CMS system, large batch, sufficient for labeling 1000 terminal blocks, color: yellow                              |
| 1050512 | ZB 8:SO/CMS            | Zack strip, 10-section, divisible, special printing, marking according to customer requirements  |
| 1052002 | ZB 8:UNBEDRUCKT        | Zack strip, 10-section, unprinted, for individual labeling with M-PEN, ZB-T or CMS system, sufficient for 100 terminal blocks, for a terminal width of 8.2 mm, color: white                      |
| 0800734 | ZBFM 8/WH:UNBEDRUCKT   | Zack marker sheet, flat, unprinted: 50-section, 10 strips à 5 markers, sufficient for 50 terminal blocks, for all terminal blocks, pitch 8.2 mm, labeling with M-PEN or CMS system, color: white |
| 0804934 | ZBFM 8:SO/CMS          | Special printing, Zack marker sheet, flat, 50-section, divisible, marking according to customer requirements   |

**Plug/Adapter**

|         |                 |   |
|---------|-----------------|---|
| 0201731 | MPS-IH BK       | Insulating sleeve, Color: black                     |
| 0201689 | MPS-IH BU       | Insulating sleeve, Color: blue                      |
| 0201702 | MPS-IH GN       | Insulating sleeve, Color: green                     |
| 0201728 | MPS-IH GY       | Insulating sleeve, Color: gray                      |
| 0201676 | MPS-IH RD       | Insulating sleeve, Color: red                       |
| 0201715 | MPS-IH VT       | Insulating sleeve, Color: violet                    |
| 0201663 | MPS-IH WH       | Insulating sleeve, Color: white                     |
| 0201692 | MPS-IH YE       | Insulating sleeve, Color: yellow                    |
| 0201744 | MPS-MT          | Test plugs  |
| 3030925 | PAI-4           | Test adapter, Color: gray                           |
| 3031005 | PS-8            | Test adapter, Color: red                            |
| 3030860 | RB ST 6-(2,5/4) | Reducing bridge, Number of positions: 2, Color: red |

**Tools**

|         |               |   |
|---------|---------------|---|
| 1204520 | SZF 2-0,8X4,0 | Actuation tool, for ST terminal blocks, also suitable for use as a bladed screwdriver, size: 0.8 x 4.0 x 100 mm, 2-component grip, with non-slip grip |
|---------|---------------|---|

**Diagrams/Drawings**

Circuit diagram

---



**Address**

PHOENIX CONTACT Deutschland GmbH  
Flachmarktstr. 8  
32825 Blomberg, Germany  
Phone +49 5235 3 12000  
Fax +49 5235 3 41200  
<http://www.phoenixcontact.de>



© 2011 Phoenix Contact  
Technical modifications reserved;



Компания «ЭлектроПласт» предлагает заключение долгосрочных отношений при поставках импортных электронных компонентов на взаимовыгодных условиях!

Наши преимущества:

- Оперативные поставки широкого спектра электронных компонентов отечественного и импортного производства напрямую от производителей и с крупнейших мировых складов;
- Поставка более 17-ти миллионов наименований электронных компонентов;
- Поставка сложных, дефицитных, либо снятых с производства позиций;
- Оперативные сроки поставки под заказ (от 5 рабочих дней);
- Экспресс доставка в любую точку России;
- Техническая поддержка проекта, помощь в подборе аналогов, поставка прототипов;
- Система менеджмента качества сертифицирована по Международному стандарту ISO 9001;
- Лицензия ФСБ на осуществление работ с использованием сведений, составляющих государственную тайну;
- Поставка специализированных компонентов (Xilinx, Altera, Analog Devices, Intersil, Interpoint, Microsemi, Aeroflex, Peregrine, Syfer, Eurofarad, Texas Instrument, Miteq, Cobham, E2V, MA-COM, Hittite, Mini-Circuits, General Dynamics и др.);

Помимо этого, одним из направлений компании «ЭлектроПласт» является направление «Источники питания». Мы предлагаем Вам помощь Конструкторского отдела:

- Подбор оптимального решения, техническое обоснование при выборе компонента;
- Подбор аналогов;
- Консультации по применению компонента;
- Поставка образцов и прототипов;
- Техническая поддержка проекта;
- Защита от снятия компонента с производства.



#### Как с нами связаться

**Телефон:** 8 (812) 309 58 32 (многоканальный)

**Факс:** 8 (812) 320-02-42

**Электронная почта:** [org@eplast1.ru](mailto:org@eplast1.ru)

**Адрес:** 198099, г. Санкт-Петербург, ул. Калинина, дом 2, корпус 4, литера А.