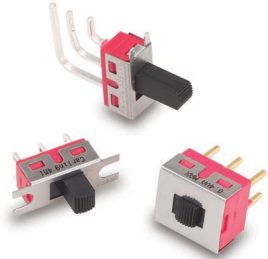


### 4S1 & 4SS-Series

Sub-Miniature & **Sealed** Sub-Miniature Slide Switches



### 4M1-Series

Miniature Slide Switch

### Specifications

Contact Rating . . . . . refer to ordering scheme  
 Electrical Life . . . . . 30,000 make & break cycles at full load  
 Contact Resistance. . . . . 10 mΩ max. initial @ 2-4 VDC  
 100mA for both silver & gold plated contacts.  
 Insulation Resistance . . . . . 1000 MΩ min.  
 Dielectric Strength . . . . . 1500 Volts RMS @ sea level  
 Operating Temperature . . . . . -30°C to +85°C  
 Solder Heat Resistance. . . . . MIL-STD-202, Method 210  
 Actuator Travel . . . . . 25°

### Materials

Case . . . . . Diallyl phthalate (DAP) (UL 94V-0)  
 Slide Handle. . . . . Nylon  
 Housing. . . . . Stainless Steel  
 Terminal Seal . . . . . Epoxy

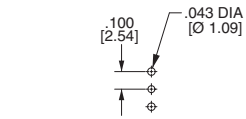
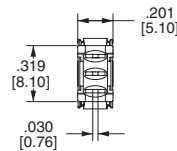
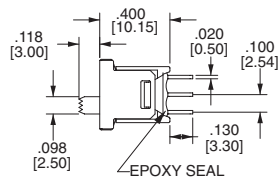
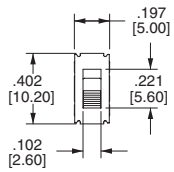
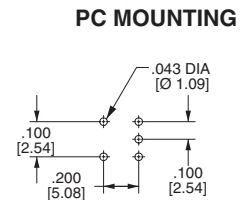
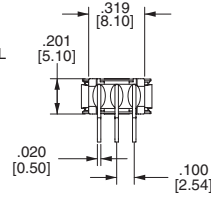
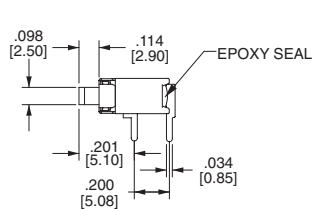
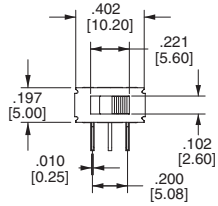
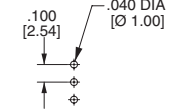
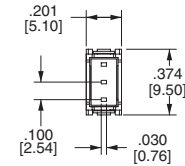
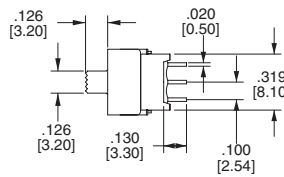
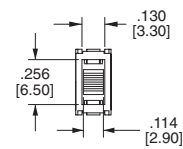
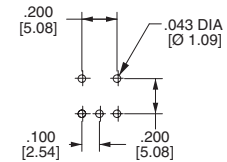
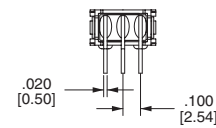
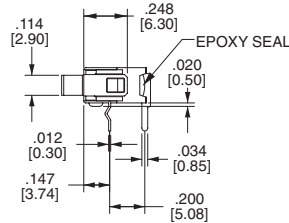
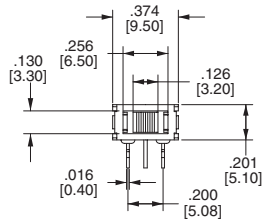
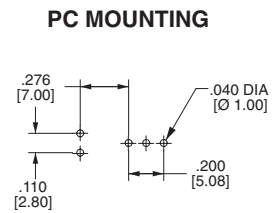
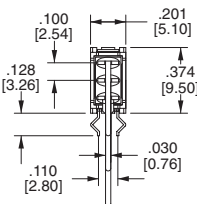
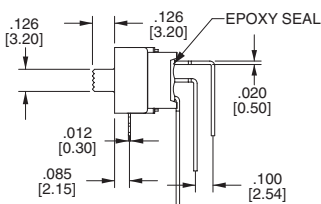
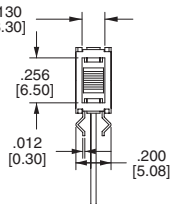
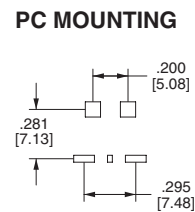
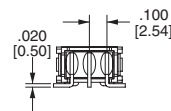
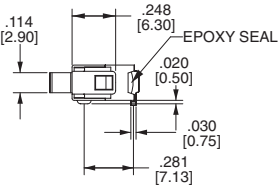
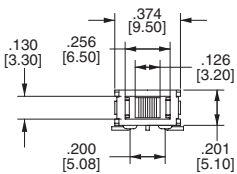
### 4S1-Series Ordering Scheme



<b>1 SERIES</b> <b>4S1</b> Sub-Miniature Slide Switch																
<b>2 POLES</b> <b>FSP</b> single pole																
<b>3 CIRCUIT</b> <table style="width: 100%; border-collapse: collapse;"> <tr> <td colspan="4" style="text-align: center;"><b>Switching Position:</b></td> </tr> <tr> <td style="width: 10%;"></td> <td style="width: 15%;">2-1</td> <td style="width: 25%;">OPEN</td> <td style="width: 50%;">2-3</td> </tr> <tr> <td><b>1</b></td> <td>ON</td> <td>NONE</td> <td>ON</td> </tr> <tr> <td><b>3</b></td> <td>ON</td> <td>OFF</td> <td>ON</td> </tr> </table>	<b>Switching Position:</b>					2-1	OPEN	2-3	<b>1</b>	ON	NONE	ON	<b>3</b>	ON	OFF	ON
<b>Switching Position:</b>																
	2-1	OPEN	2-3													
<b>1</b>	ON	NONE	ON													
<b>3</b>	ON	OFF	ON													
<b>4 TERMINATION</b> <b>M2</b> PCB <b>M6</b> PC Mount, 90° horizontal																

<b>5 CONTACT</b>																				
	<i>Material</i>	<i>Terminal Plating</i>																		
<b>G</b>	silver <sup>1</sup>	gold over silver <sup>3</sup>																		
<b>K</b>	gold <sup>2</sup>	tin-lead <sup>4</sup>																		
<b>P</b>	silver <sup>1</sup>	tin-lead <sup>4</sup>																		
<b>Q</b>	silver <sup>1</sup>	silver <sup>1</sup>																		
<b>R</b>	gold <sup>2</sup>	gold <sup>2</sup>																		
<table style="width: 100%; border-collapse: collapse;"> <tr> <td style="width: 15%;"></td> <td style="width: 15%;"><i>Rating</i></td> <td style="width: 70%;"></td> </tr> <tr> <td></td> <td>3A@125VAC or 28VDC;</td> <td>1.5A @ 250VAC</td> </tr> <tr> <td></td> <td>0.4VA max. @20V max (AC/DC)</td> <td></td> </tr> <tr> <td></td> <td>3A@125VAC or 28VDC;</td> <td>1.5A @ 250VAC</td> </tr> <tr> <td></td> <td>3A@125VAC or 28VDC;</td> <td>1.5A @ 250VAC</td> </tr> <tr> <td></td> <td>0.4VA max. @20V max (AC/DC)</td> <td></td> </tr> </table>				<i>Rating</i>			3A@125VAC or 28VDC;	1.5A @ 250VAC		0.4VA max. @20V max (AC/DC)			3A@125VAC or 28VDC;	1.5A @ 250VAC		3A@125VAC or 28VDC;	1.5A @ 250VAC		0.4VA max. @20V max (AC/DC)	
	<i>Rating</i>																			
	3A@125VAC or 28VDC;	1.5A @ 250VAC																		
	0.4VA max. @20V max (AC/DC)																			
	3A@125VAC or 28VDC;	1.5A @ 250VAC																		
	3A@125VAC or 28VDC;	1.5A @ 250VAC																		
	0.4VA max. @20V max (AC/DC)																			
NOTE: Tin-lead option available with PC type terminations only. 1 Moveable contact & terminals: copper alloy, silver plate 2 Moveable contact & terminals: copper alloy with gold plate over nickel plate 3 Terminals: silver plate with outer layer in gold plating																				
<b>6 EPOXY SEAL</b> <b>E</b> epoxy seal																				
<b>7 PACKAGING</b> Switches are bulk packed, unless T/R is specified at the end of the part number. <b>T/R</b> tape reel - 500 pieces per reel																				

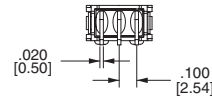
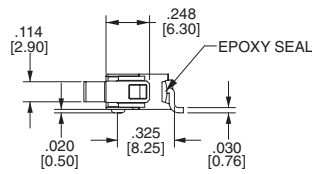
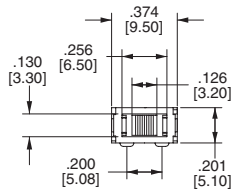


**4S-Series Dimensional Specifications: in. [mm]**
**4S1-Series**
**TERMINATION**
**PC MOUNTING**
**M2**

**M6**

**4SS-Series**
**TERMINATION**
**PC MOUNTING**
**M2**

**M6**

**M7**

**L6**


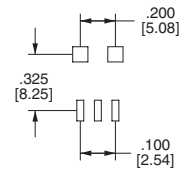
**4SS-Series Dimensional Specifications: in. [mm]**

**TERMINATION**

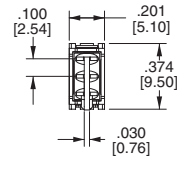
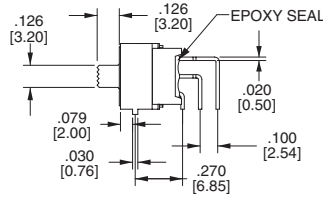
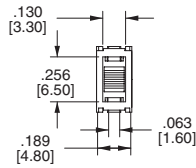
**S6**



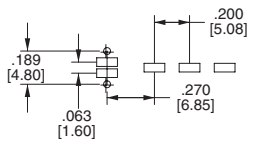
**PC MOUNTING**



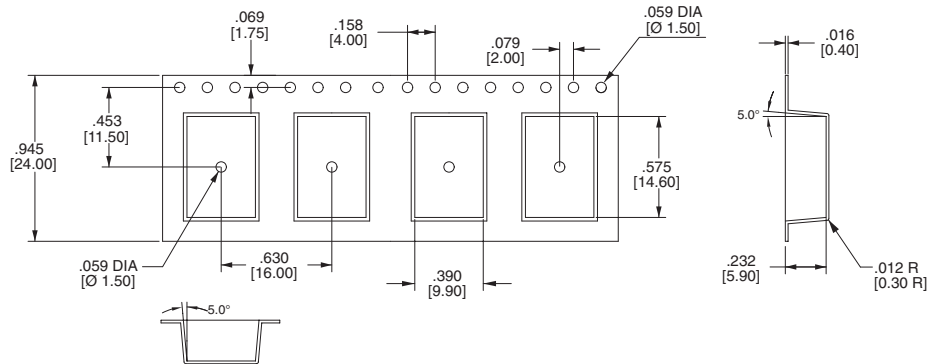
**S7**



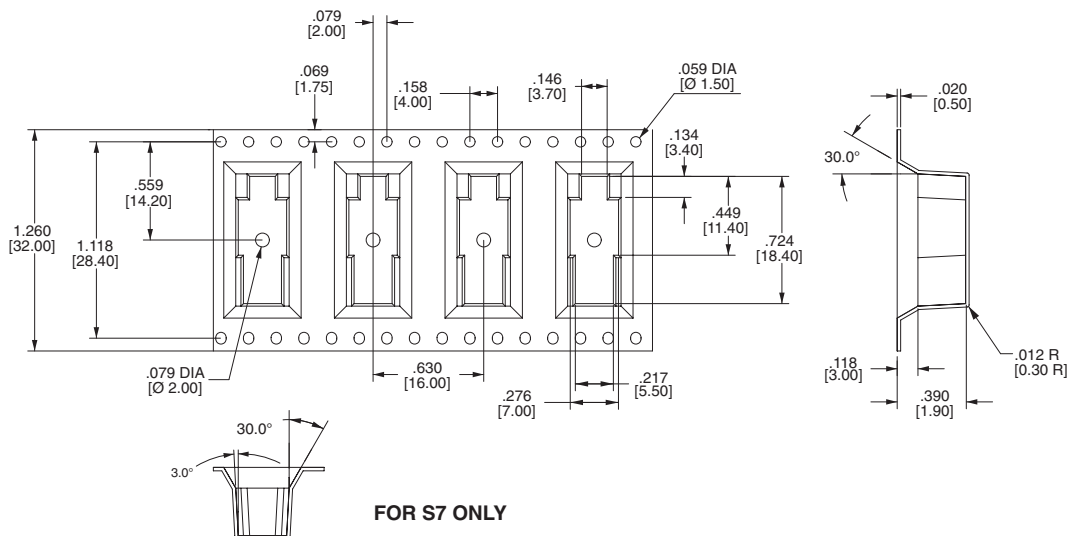
**PC MOUNTING**



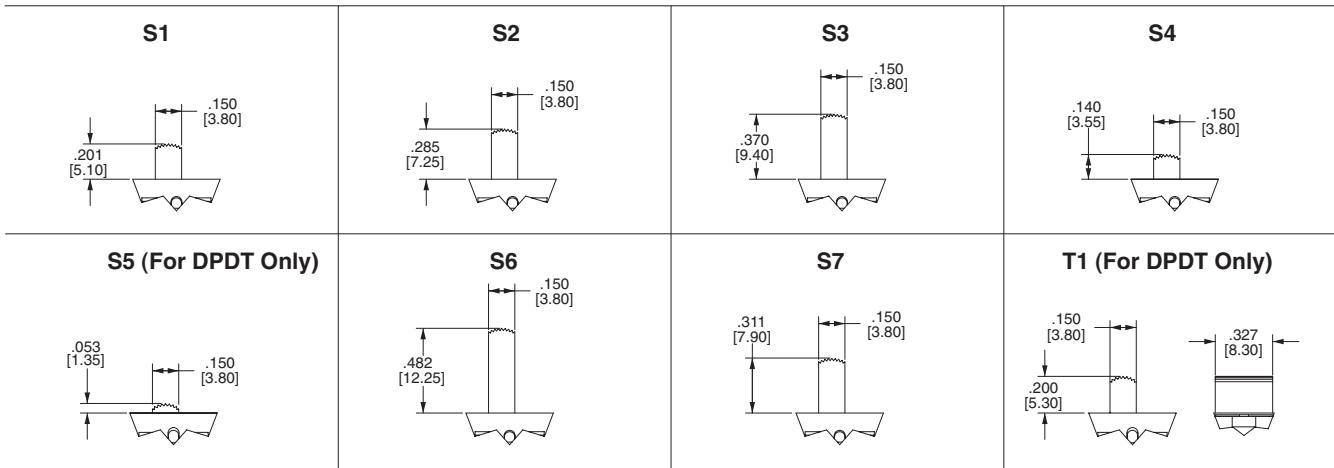
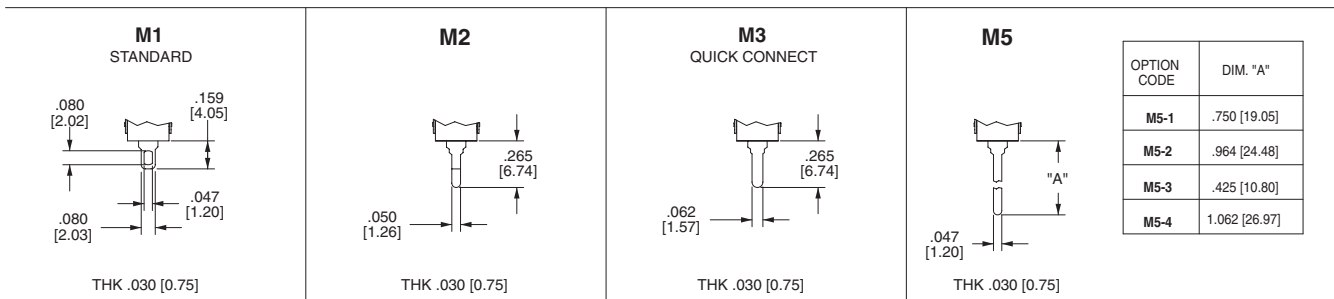
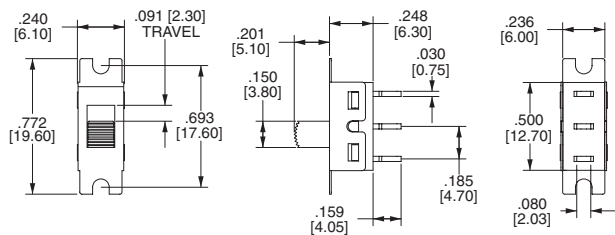
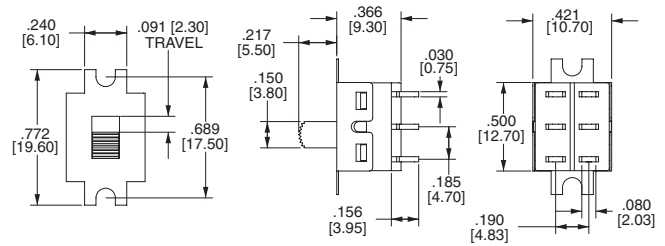
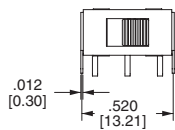
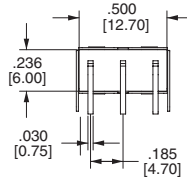
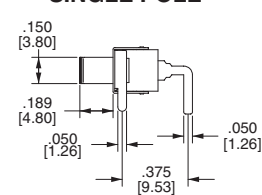
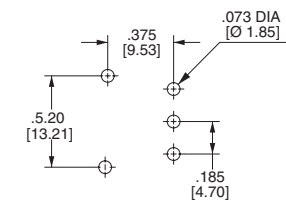
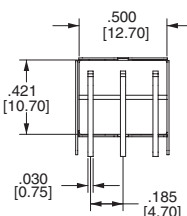
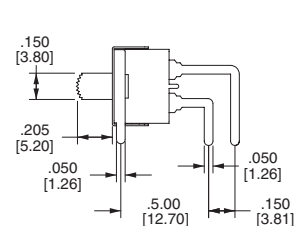
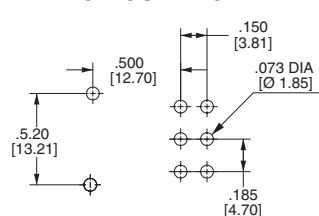
**REEL TAPING**



**FOR S6, L6 ONLY**



**FOR S7 ONLY**

**4M1-Series Dimensional Specifications: in. [mm]**
**ACTUATOR**

**TERMINATION**

**SINGLE POLE**

**DOUBLE POLE**

**M6**

**SINGLE POLE**

**PC MOUNTING**

**DOUBLE POLE**

**PC MOUNTING**


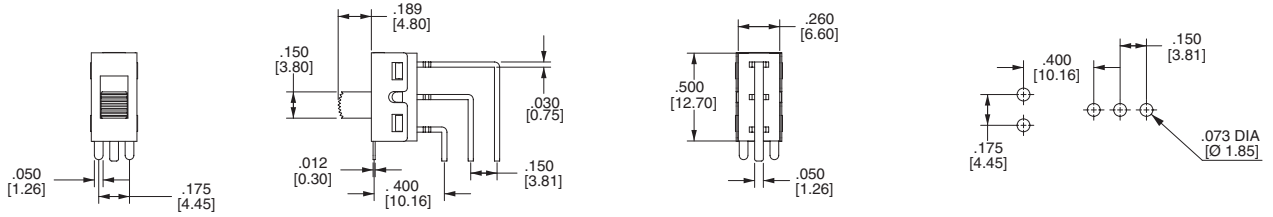
**4M1-Series Dimensional Specifications: in. [mm]**

**TERMINATION**

**M7**

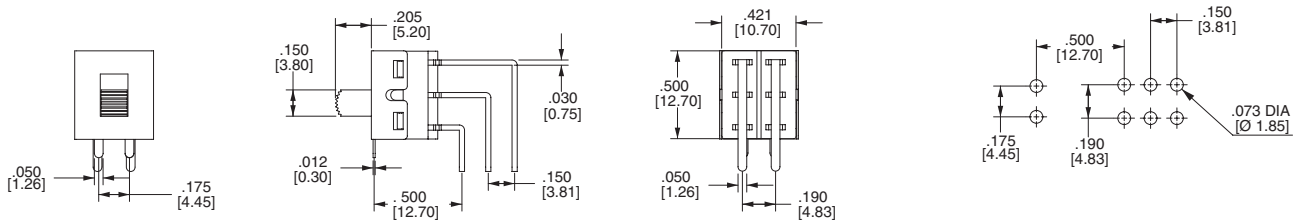
**SINGLE POLE**

**PC MOUNTING**



**DOUBLE POLE**

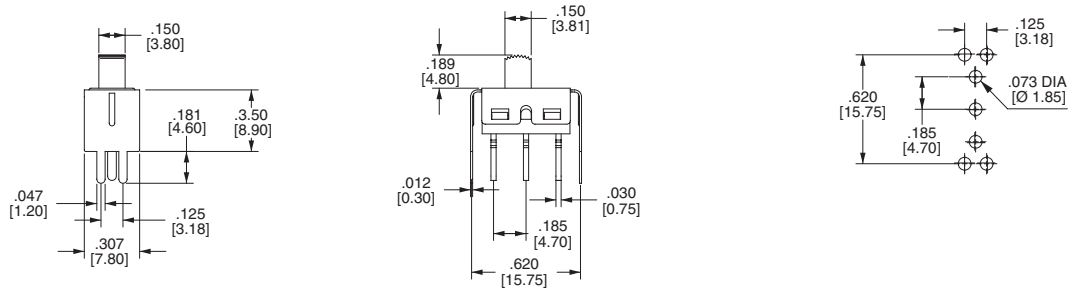
**PC MOUNTING**



**VS2**

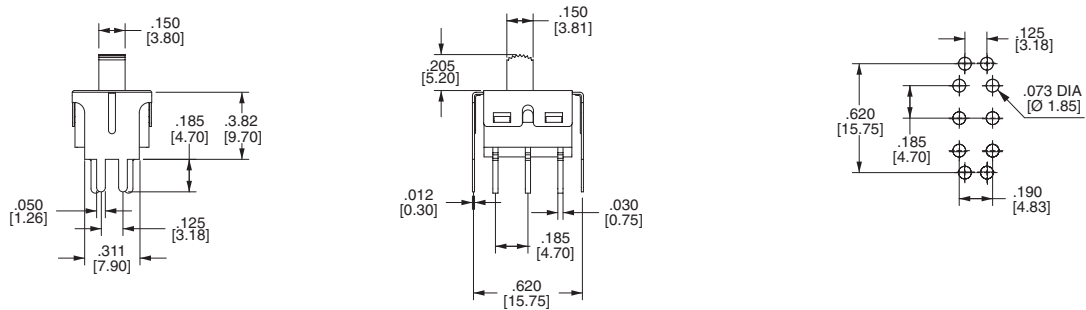
**SINGLE POLE**

**PC MOUNTING**



**DOUBLE POLE**

**PC MOUNTING**





Компания «ЭлектроПласт» предлагает заключение долгосрочных отношений при поставках импортных электронных компонентов на взаимовыгодных условиях!

Наши преимущества:

- Оперативные поставки широкого спектра электронных компонентов отечественного и импортного производства напрямую от производителей и с крупнейших мировых складов;
- Поставка более 17-ти миллионов наименований электронных компонентов;
- Поставка сложных, дефицитных, либо снятых с производства позиций;
- Оперативные сроки поставки под заказ (от 5 рабочих дней);
- Экспресс доставка в любую точку России;
- Техническая поддержка проекта, помощь в подборе аналогов, поставка прототипов;
- Система менеджмента качества сертифицирована по Международному стандарту ISO 9001;
- Лицензия ФСБ на осуществление работ с использованием сведений, составляющих государственную тайну;
- Поставка специализированных компонентов (Xilinx, Altera, Analog Devices, Intersil, Interpoint, Microsemi, Aeroflex, Peregrine, Syfer, Eurofarad, Texas Instrument, Miteq, Cobham, E2V, MA-COM, Hittite, Mini-Circuits, General Dynamics и др.);

Помимо этого, одним из направлений компании «ЭлектроПласт» является направление «Источники питания». Мы предлагаем Вам помощь Конструкторского отдела:

- Подбор оптимального решения, техническое обоснование при выборе компонента;
- Подбор аналогов;
- Консультации по применению компонента;
- Поставка образцов и прототипов;
- Техническая поддержка проекта;
- Защита от снятия компонента с производства.



#### Как с нами связаться

**Телефон:** 8 (812) 309 58 32 (многоканальный)

**Факс:** 8 (812) 320-02-42

**Электронная почта:** [org@eplast1.ru](mailto:org@eplast1.ru)

**Адрес:** 198099, г. Санкт-Петербург, ул. Калинина, дом 2, корпус 4, литера А.