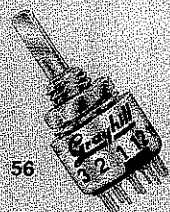
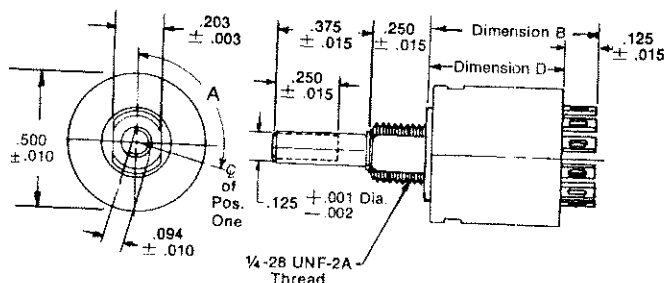


Our Most Economical Single Deck Rotary Switch

SERIES 55, 56



Standard



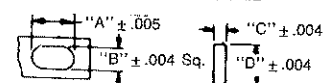
Stop pin holes are not shown in drawing. They are located between adjacent switch positions. Switch can also be made with bushing flats at 90° to those shown here. Available by special order.

Angle Of Throw	30°	36°
Angle 'A'	105°	108°

Series	55	56
Dimension 'B'	.635 ± .020	.480 ± .020
Dimension 'D'	.510	.355

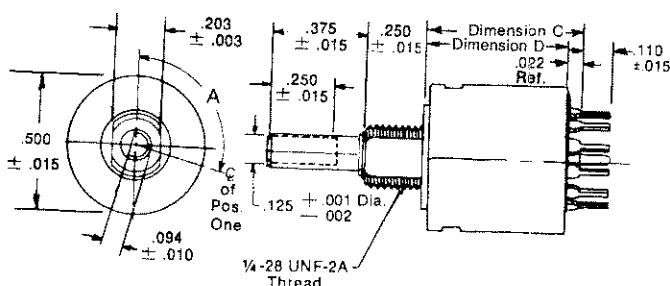
Rear Views Shown With Circuit Diagrams

SOLDER LUG TERMINAL DETAIL



Angle	30°			36°		
	Term.	Common		Term.	Common	
Dim.		1 Pole	2 or 4		1 Pole	2 Pole
"A"	.063	WIRE WRAP	.068	0.68	WIRE WRAP	.068
"B"	.020	STYLE	.036	.036	STYLE	.036
"C"	.016	.062 DIA.	.020	.020	.062 DIA.	.020
"D"	.046	± .001	.062	.062	± .001	.062

PC Mountable



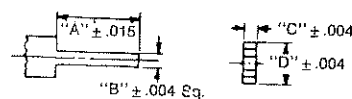
Stop pin holes are not shown in drawing. They are located between adjacent switch positions. Switch can also be made with bushing flats at 90° to those shown here. Available by special order.

Angle Of Throw	30°	36°
Angle 'A'	105°	108°

Series	55	56
Dimension 'C'	.532 ± .020	.377 ± .020
Dimension 'D'	.510	.355

Rear Views Shown With Circuit Diagrams

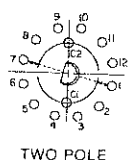
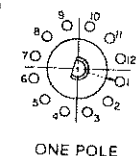
PC TERMINAL DETAIL



Angle		30°		36°		
		Common		Common		
Dim.	Term.	1 Pole	2 or 4	Term.	1 Pole	2 Pole
"A"	.110	RND.	.110	.110	RND.	.110
"B"	.016	PIN	.020	.020	PIN	.020
"C"	.016	.025	.020	.020	.025	.020
		DIA.			DIA.	
"D"	.046	± .002	.062	.062	± .002	.062

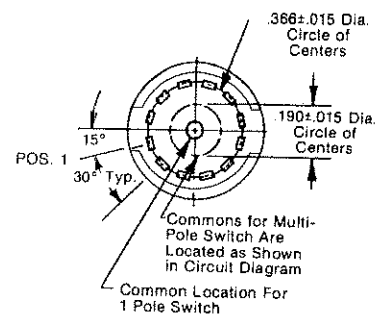
Circuit Diagrams

Circuit as viewed from shaft end.



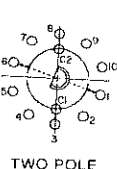
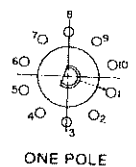
30° ANGLE OF THROW

Rear View

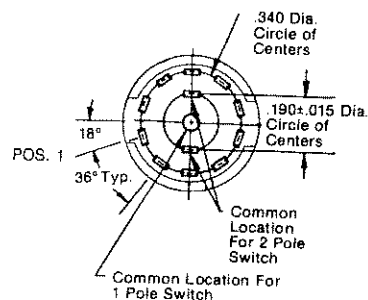


36° ANGLE OF THROW

Circuit as viewed from shaft end.



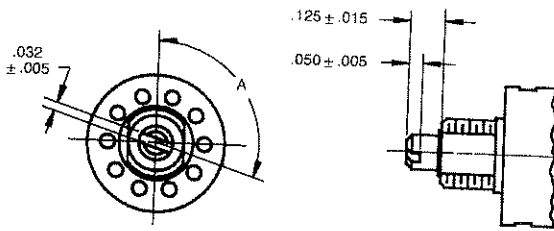
Rear View



1/2" Diameter, 200 mA Rotary Switches

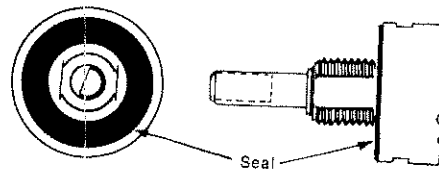
Screwdriver Actuation

All styles and angles of throw are available with a screwdriver slotted shaft. Angle A and other dimensions are shown in the appropriate switch drawing.



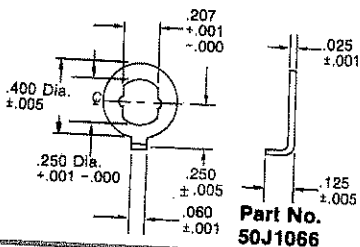
Shaft and Panel Seal

Panel is sealed by an "O" ring at the base of bushing. Shaft is sealed by an "O" ring inside the bushing. After the switch is mounted, seals do not alter the dimensions of the unsealed style.



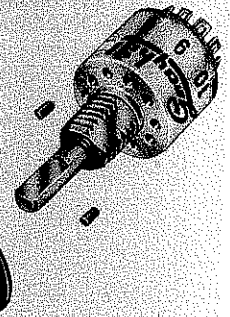
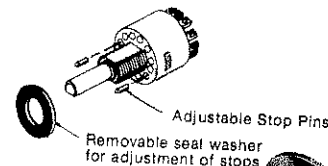
Non-Turn Washer

This washer is sold only when accompanied by an order for a like number of switches. Washer is 302 stainless steel.



Adjustable Stop Switches

Two stop pins and an adhesive backed sticker or seal washer are provided. Sticker is temporarily removed to locate stop pins as desired to limit the shaft rotation. All dimensions are identical to the fixed stop switch counterpart.



Standard Options

Intermixing of Shorting and Non-Shorting Contacts; and RFI Grounding. Not available thru distributors. See Options, pages E-9 and E-10. See also Keylocks and features charted on E-7.

Electrical Ratings

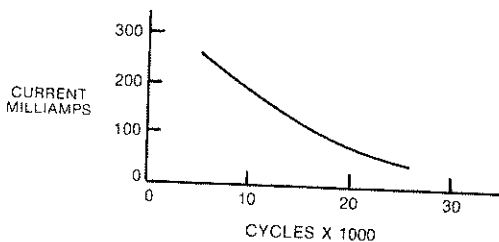


Chart shown for non-shorting contacts (break before make)
Voltage: 115 Vac or 30 Vdc, resistive load.

One cycle is 360° rotation and a return through all switch positions to the starting position. The data for the curve was measured at sea level, 25°C, and 68% humidity with the following life limiting criteria.

The life limiting criteria for the curve are as follows:

Contact Resistance: Standard style: 100 milliohms maximum (15 milliohms initially)

Insulation Resistance and Voltage Breakdown: 10,000 megohms minimum (50,000 megohms initially) and 600 Vac minimum, respectively, between mutually insulated parts.

Life Expectancy: If the life limiting criteria of the application are less critical than above or if elevated temperatures or reduced pressures are involved, Grayhill Incorporated can predict the life of the switch for the application.

Contact Carry Rating: Switch will carry 6 amperes with a maximum contact temperature rise of 20°C.

Switch meets the following requirements of MIL-S-3786:

High and medium shock

Vibration (10 to 2,000 Hz)

Thermal Shock (-65° to 125°C)

Salt Spray

Explosion

Stop Strength (7.5 in-lbs. minimum (.85 N-m))

Terminal Strength

Sealed styles withstand water pressure of 15 PSI minimum (103 KPa) without leakage.

Additional Characteristics

Contact Type and Forces: Shorting or non-shorting wiping contacts with over 25 grams of contact force.

Shaft Flat Orientation: Flat opposite contacting position of pole number one (see circuit diagram).

Terminals: Switches are provided with the full circle of terminals, regardless of the number of active positions.

Stop Strength: 7.5 pound-inches minimum.

Rotational Torque: 3.5 to 7.5 ounce-inches (21-53 mN-m) depending on the number of poles.

Bushing Mounting: Required for switches with stops and recommended for switches without stops.

Materials and Finishes

Housing: Zinc die cast, zinc plated with chromate treatment.

Mounting Nut: Brass. Zinc plated with chromate treatment.

Lockwasher: Spring steel, zinc plated with chromate treatment.

Panel Seal: Silicone Rubber.

Shaft & Stop Arm: Zinc die cast, zinc plated with chromate treatment.

Retaining Ring: 302 stainless steel, passivated.

Shaft Seal: Silicone rubber.

Stop Pins: 303 stainless steel, passivated.

Detent Rotor: Molded Thermoplastic.

Detent Spring: Tinned music wire.

Detent Balls: Steel, nickel plated.

Contact Spring: Stainless steel, passivated.

Rotor Contact: Brass, silver over nickel plated.

Common Ring: Brass, gold over silver over nickel plated.

Terminals: Brass, gold over silver over nickel plated.

Switch Base: Molded thermoset plastic.

Mounting Hardware: One mounting nut .089" thick by .375" across flats and one internal tooth lockwasher are supplied with the switch.

SERIES
55 & 56

Choices And Limitations

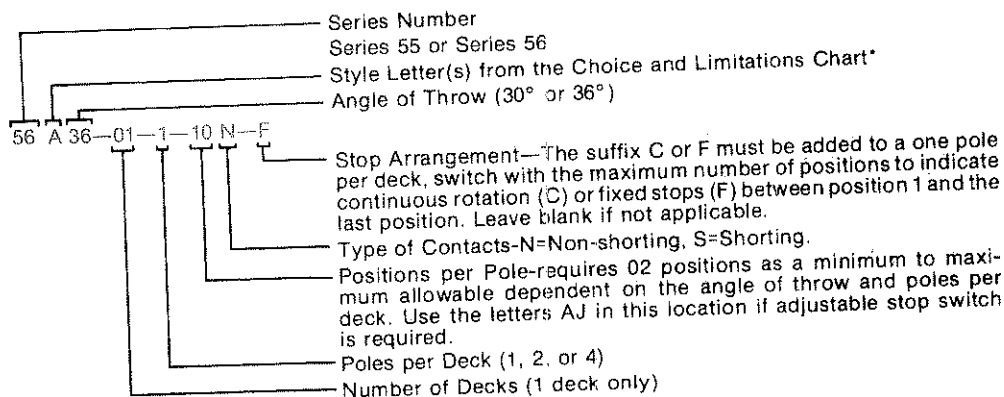
Style, Description & Applicable Drawing Figures	Angle Of Throw	Stops	Terminals	Number of Poles		Number Of Positions/Pole
				Shorting	Non-Shorting	
A = Standard S = Standard, Shaft/Panel Seal B = Screwdriver Slotted BS = Slotted, Shaft/Panel Seal	1, 2	Fixed	Solder Lug	1	1	2 thru 12
	1, 2			2	2	2 thru 6
	3, 2			4	4	2 or 3
	3, 2			1	1	2 thru 10
P = PC Mount SP = PC Mount, Shaft/Panel Seal BP = Screwdriver Slotted, PC Mount BSP = Slotted, Sealed, PC Mount	1, 4	Fixed	Printed Circuit	1	1	2 thru 12
	1, 4			2	2	2 thru 6
	3, 4			4	4	2 or 3
	3, 4			1	1	2 thru 10
D = Adjustable Stops SD = Adj. Stops, Shaft/Panel Seal BD = Adj. Stops, Screwdriver Slotted BSD = Slotted, Sealed, Adjustable	1, 2	Adjustable	Solder lug	1	1	Adjustable (2 thru 12)
	1, 2			2	2	Adjustable (2 thru 6)
	3, 2			4	4	2 or 3
	3, 2			1	1	Adjustable (2 thru 10)
DP = Adj. Stops, PC Mount SDP = Adjustable, PC Mount, Sealed BDP = Slotted, Adjustable, PC Mount BDSP = Slotted, Sealed, Adj., PC	1, 4	Adjustable	Printed Circuit	1	1	Adjustable (2 thru 12)
	1, 4			2	2	Adjustable (2 thru 6)
	3, 4			4	4	2 or 3
	3, 4			1	1	Adjustable (2 thru 10)
	36°			2	2	Adjustable (2 thru 5)

Switches with bushing flats at 90°, are available by special order.

For additional features in this series, see Features Chart on page E-7.

Ordering Information

Part number is descriptive and formed in the following manner:



*For styles which include "D", see also "Positions per Pole".

For prices and discounts, contact a local Sales Office, an authorized local Distributor, or Grayhill.

Available From Your Local GRAYHILL Distributor.



Компания «ЭлектроПласт» предлагает заключение долгосрочных отношений при поставках импортных электронных компонентов на взаимовыгодных условиях!

Наши преимущества:

- Оперативные поставки широкого спектра электронных компонентов отечественного и импортного производства напрямую от производителей и с крупнейших мировых складов;
- Поставка более 17-ти миллионов наименований электронных компонентов;
- Поставка сложных, дефицитных, либо снятых с производства позиций;
- Оперативные сроки поставки под заказ (от 5 рабочих дней);
- Экспресс доставка в любую точку России;
- Техническая поддержка проекта, помощь в подборе аналогов, поставка прототипов;
- Система менеджмента качества сертифицирована по Международному стандарту ISO 9001;
- Лицензия ФСБ на осуществление работ с использованием сведений, составляющих государственную тайну;
- Поставка специализированных компонентов (Xilinx, Altera, Analog Devices, Intersil, Interpoint, Microsemi, Aeroflex, Peregrine, Syfer, Eurofarad, Texas Instrument, Miteq, Cobham, E2V, MA-COM, Hittite, Mini-Circuits, General Dynamics и др.);

Помимо этого, одним из направлений компании «ЭлектроПласт» является направление «Источники питания». Мы предлагаем Вам помощь Конструкторского отдела:

- Подбор оптимального решения, техническое обоснование при выборе компонента;
- Подбор аналогов;
- Консультации по применению компонента;
- Поставка образцов и прототипов;
- Техническая поддержка проекта;
- Защита от снятия компонента с производства.



Как с нами связаться

Телефон: 8 (812) 309 58 32 (многоканальный)

Факс: 8 (812) 320-02-42

Электронная почта: org@eplast1.ru

Адрес: 198099, г. Санкт-Петербург, ул. Калинина, дом 2, корпус 4, литера А.