



Heyco®-Tite EMC Brass Liquid Tight Cordgrips

Straight-Thru, Metric Hubs

EMC Nickel-Plated Brass with Contact Sleeve

The Ultimate in Liquid Tight Strain Relief Protection



| CABLE DIA. RANGE | | | | PART NO. | THREAD SIZE | UL OR IEC | PART DIMENSIONS | | | | | | | |
|------------------|-----|---------|-----|----------|-------------|-----------|--------------------------|-----|-----------------------|-----|--------------------|-----|------------------------------|-----|
| Minimum | | Maximum | | | | | A Clearance Hole Dia. | | B Max. O.A. Length | | C Thread Length | | D Wrenching Nut Flat Size | |
| in. | mm. | in. | mm. | | | | in. | mm. | in. | mm. | in. | mm. | in. | mm. |

Standard Thread

| | | | | | | | | | | | | | | |
|------|------|------|------|-------------|-----------|-------|-------|------|------|------|-----|------|------|------|
| .098 | 2,5 | .138 | 3,5 | 4613 | M8 x 1,25 | cULus | .315 | 8,0 | .94 | 24,0 | .39 | 10,0 | .43 | 11,0 |
| .118 | 3,0 | .157 | 4,0 | 4614 | | | | | | | | | | |
| .118 | 3,0 | .157 | 4,0 | 4615 | M10 x 1,5 | cULus | .394 | 10,0 | .98 | 25,0 | .39 | 10,0 | .51 | 13,0 |
| .157 | 4,0 | .236 | 6,0 | 4616 | | | | | | | | | | |
| .177 | 4,5 | .236 | 6,0 | 4618 | M12 x 1,5 | cULus | .472 | 12,0 | 1.06 | 27,0 | .39 | 10,0 | .59 | 15,0 |
| .236 | 6,0 | .295 | 7,5 | 4619 | | | | | | | | | | |
| .236 | 6,0 | .312 | 8,0 | 4622 | M16 x 1,5 | cULus | .630 | 16,0 | 1.18 | 30,0 | .39 | 10,0 | .71 | 18,0 |
| .315 | 8,0 | .394 | 10,0 | 4623 | | | | | | | | | | |
| .315 | 8,0 | .433 | 11,0 | 4625 | M20 x 1,5 | cULus | .787 | 20,0 | 1.22 | 31,0 | .39 | 10,0 | .94 | 24,0 |
| .433 | 11,0 | .551 | 14,0 | 4626 | | | | | | | | | | |
| .512 | 13,0 | .630 | 16,0 | 4628 | M25 x 1,5 | cULus | .984 | 25,0 | 1.41 | 36,0 | .43 | 11,0 | 1.18 | 30,0 |
| .630 | 16,0 | .748 | 19,0 | 4629 | | | | | | | | | | |
| .709 | 18,0 | .827 | 21,0 | 4631 | M32 x 1,5 | cULus | 1.260 | 32,0 | 1.65 | 42,0 | .51 | 13,0 | 1.42 | 36,0 |
| .827 | 21,0 | .984 | 25,0 | 4632 | | | | | | | | | | |

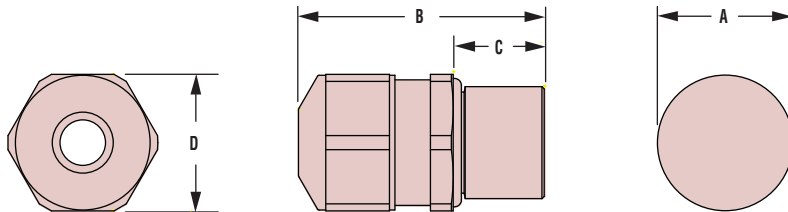
Short Thread — ALL NEW PRODUCTS!

| | | | | | | | | | | | | | | |
|------|------|------|------|--------------|-----------|-------|-------|------|------|------|-----|-----|------|------|
| .098 | 2,5 | .138 | 3,5 | 14613 | M8 x 1,25 | cULus | .315 | 8,0 | .75 | 19,0 | .20 | 5,0 | .43 | 11,0 |
| .118 | 3,0 | .157 | 4,0 | 14614 | | | | | | | | | | |
| .118 | 3,0 | .157 | 4,0 | 14615 | M10 x 1,5 | cULus | .394 | 10,0 | .79 | 20,0 | .20 | 5,0 | .51 | 13,0 |
| .157 | 4,0 | .236 | 6,0 | 14616 | | | | | | | | | | |
| .177 | 4,5 | .236 | 6,0 | 14618 | M12 x 1,5 | cULus | .472 | 12,0 | .87 | 22,0 | .20 | 5,0 | .59 | 15,0 |
| .236 | 6,0 | .295 | 7,5 | 14619 | | | | | | | | | | |
| .236 | 6,0 | .312 | 8,0 | 14622 | M16 x 1,5 | cULus | .630 | 16,0 | .98 | 25,0 | .20 | 5,0 | .71 | 18,0 |
| .315 | 8,0 | .394 | 10,0 | 14623 | | | | | | | | | | |
| .315 | 8,0 | .433 | 11,0 | 14625 | M20 x 1,5 | cULus | .787 | 20,0 | 1.06 | 27,0 | .24 | 6,0 | .94 | 24,0 |
| .433 | 11,0 | .551 | 14,0 | 14626 | | | | | | | | | | |
| .512 | 13,0 | .630 | 16,0 | 14628 | M25 x 1,5 | cULus | .984 | 25,0 | 1.26 | 32,0 | .28 | 7,0 | 1.18 | 30,0 |
| .630 | 16,0 | .748 | 19,0 | 14629 | | | | | | | | | | |
| .709 | 18,0 | .827 | 21,0 | 14631 | M32 x 1,5 | cULus | 1.260 | 32,0 | 1.46 | 37,0 | .31 | 8,0 | 1.42 | 36,0 |
| .827 | 21,0 | .984 | 25,0 | 14632 | | | | | | | | | | |

Short Thread, High Temperature*

| | | | | | | | | | | | | | | |
|------|-----|------|-----|-------------|-----------|-------|------|------|-----|------|-----|-----|-----|------|
| .236 | 6,0 | .315 | 8,0 | 4609 | M16 x 1,5 | cULus | .630 | 16,0 | .98 | 25,0 | .20 | 5,0 | .71 | 18,0 |
|------|-----|------|-----|-------------|-----------|-------|------|------|-----|------|-----|-----|-----|------|

*Special sealing gland rated to 200°C (392°F).



- Ideal for applications where **Electromagnetic Interference (EMI) protection or Electromagnetic Compatibility (EMC) is needed.**
- IP 68 rated.
- Nickel-plated finish over brass provides excellent corrosion resistance and durability.
- Excellent 360° shield contact with contact sleeve due to braided shield which runs into the gland.
- Combination of the sealing insert and the contact socket guarantees a constant contact quality with minimal transfer impedance.
- Inner cable protection.
- Long thread for use in standard or thick panels.
- Multiple sizes for flexible cord diameters ranging from .10" (2,5 mm) to 1.00" (25,5 mm).
- For use in clearance or threaded holes.
- Cordgrips are made of nickel plated brass and the gland is made of TPE.
- EMC locknuts available. See page 3-40.
- DFARS Compliant



| | |
|-------------------|---|
| Material | Nickel-Plated Brass W/TPE Sealing Gland |
| Certifications | cULus Recognized under the Component Program of Underwriters' Laboratories File E51579 to both Canadian and U.S. requirements |
| Temperature Range | -40°F (-40°C) to 212°F (100°C) |
| IP Rating | IP 68, IP 69K |

Quick Specs



Компания «ЭлектроПласт» предлагает заключение долгосрочных отношений при поставках импортных электронных компонентов на взаимовыгодных условиях!

Наши преимущества:

- Оперативные поставки широкого спектра электронных компонентов отечественного и импортного производства напрямую от производителей и с крупнейших мировых складов;
- Поставка более 17-ти миллионов наименований электронных компонентов;
- Поставка сложных, дефицитных, либо снятых с производства позиций;
- Оперативные сроки поставки под заказ (от 5 рабочих дней);
- Экспресс доставка в любую точку России;
- Техническая поддержка проекта, помощь в подборе аналогов, поставка прототипов;
- Система менеджмента качества сертифицирована по Международному стандарту ISO 9001;
- Лицензия ФСБ на осуществление работ с использованием сведений, составляющих государственную тайну;
- Поставка специализированных компонентов (Xilinx, Altera, Analog Devices, Intersil, Interpoint, Microsemi, Aeroflex, Peregrine, Syfer, Eurofarad, Texas Instrument, Miteq, Cobham, E2V, MA-COM, Hittite, Mini-Circuits, General Dynamics и др.);

Помимо этого, одним из направлений компании «ЭлектроПласт» является направление «Источники питания». Мы предлагаем Вам помощь Конструкторского отдела:

- Подбор оптимального решения, техническое обоснование при выборе компонента;
- Подбор аналогов;
- Консультации по применению компонента;
- Поставка образцов и прототипов;
- Техническая поддержка проекта;
- Защита от снятия компонента с производства.



Как с нами связаться

Телефон: 8 (812) 309 58 32 (многоканальный)

Факс: 8 (812) 320-02-42

Электронная почта: org@eplast1.ru

Адрес: 198099, г. Санкт-Петербург, ул. Калинина, дом 2, корпус 4, литера А.