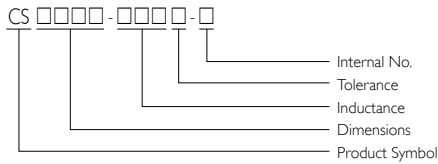


# SMD Wire Wound Chip Inductors

# CS Series



## PRODUCT IDENTIFICATION



## APPLICATIONS

RF products for Cellular Phone, GPS Receiver, Base Station, Repeater, Wireless LAN/Mouse/Keyboard/ Earphone, Remote Control, Security System and other RF modules.

## OUTLINE

Based on our technical expertise and skill in accurately winding, these chip inductors are designed as filtering, impedance matching, resonance and choke circuits for RF designers.

The standard series as well as custom design to meet your needs of telecom & wireless products.

## FEATURES

Ceramic body and wire wound construction provide highest SRFs.

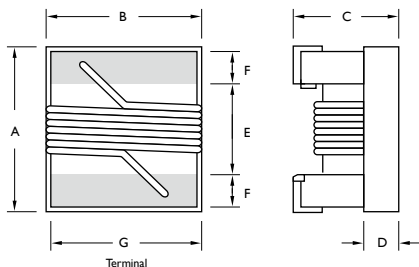
These ultra-compact inductors provided exceptional Q values, even at high frequencies.

Their ceramic construction delivers the highest possible SRFs as well as excellent Q values.

The non-magnetic coil form also assures the utmost in thermal stability, predictability and batch consistency.

CS series is standard parts for RF designers.

## SHAPES AND DIMENSIONS



TYPE	UNIT	A	B	C	D	E	F	G
		Max.	Max.	Max.				
CS0402	inch	0.047	0.028	0.026	0.010	0.020	0.009	0.022
	mm	1.19	0.70	0.66	0.25	0.51	0.23	0.56
CS0603	inch	0.070	0.044	0.040	0.015	0.030	0.013	0.034
	mm	1.6 +0.2/-0.1	1.02 ± 0.1	0.82 +0.2/-0.1	0.38	0.76	0.33	0.86
CS0805	inch	0.093	0.068	0.060	0.020	0.050	0.020	0.040
	mm	2.35	1.73	1.52	0.51	1.27	0.51	1.02
CS1008	inch	0.115	0.110	0.083	0.020	0.080	0.020	0.060
	mm	2.92	2.79	2.10	0.51	2.03	0.51	1.52

**ELECTRICAL CHARACTERISTICS CS0402**

PART NO.	INDUCTANCE (nH)	TOLERANCE (±%)	Q Min.	SRF (MHz) Min.	DC RESISTANCE (Ω) Max.	I <sub>rms</sub> (mA) Max.	900MHz		1.7GHz	
							L Typ.	Q Typ.	L Typ.	Q Typ.
CS0402-1N0□-N	1.0	5 / 10	16	12.7	0.045	1,360	1.02	77	1.02	69
CS0402-1N9□-N	1.9	5 / 10	16	11.3	0.070	1,040	1.72	68	1.74	82
CS0402-2N0□-N	2.0	5 / 10	16	11.1	0.070	1,040	1.93	54	1.93	75
CS0402-2N2□-N	2.2	5 / 10	19	10.8	0.070	960	2.19	59	2.23	100
CS0402-2N4□-N	2.4	5 / 10	15	10.5	0.068	790	2.24	51	2.27	68
CS0402-2N7□-N	2.7	5 / 10	16	10.4	0.120	640	2.58	42	2.60	61
CS0402-3N3□-N	3.3	5 / 10	19	7.00	0.066	840	3.10	65	3.12	87
CS0402-3N6□-N	3.6	5 / 10	19	6.80	0.066	840	3.56	45	3.62	71
CS0402-3N9□-N	3.9	5 / 10	19	6.00	0.066	840	3.89	50	4.00	75
CS0402-4N3□-N	4.3	5 / 10	18	6.00	0.091	700	4.19	47	4.30	71
CS0402-4N7□-N	4.7	5 / 10	15	4.77	0.130	640	4.55	48	4.68	68
CS0402-5N1□-N	5.1	5 / 10	20	4.80	0.083	800	5.15	56	5.25	82
CS0402-5N6□-N	5.6	5 / 10	20	4.80	0.083	760	5.16	54	5.28	81
CS0402-6N2□-N	6.2	5 / 10	20	4.80	0.083	760	6.16	52	6.37	76
CS0402-6N8□-N	6.8	5 / 10	20	4.80	0.083	680	6.56	63	6.93	78
CS0402-7N5□-N	7.5	5 / 10	22	4.80	0.10	680	7.91	60	8.22	88
CS0402-8N2□-N	8.2	5 / 10	22	4.40	0.10	680	8.50	57	8.85	84
CS0402-8N7□-N	8.7	5 / 10	18	4.10	0.20	480	8.78	54	9.21	73
CS0402-9N0□-N	9.0	5 / 10	22	4.16	0.10	680	9.07	62	9.53	78
CS0402-9N5□-N	9.5	5 / 10	18	4.00	0.20	480	9.42	54	9.98	69
CS0402-10N□-N	10	5 / 10	21	3.90	0.20	480	9.80	50	10.10	67
CS0402-11N□-N	11	5 / 10	24	3.68	0.12	640	10.70	52	11.20	78
CS0402-12N□-N	12	5 / 10	24	3.60	0.12	640	11.90	53	12.70	71
CS0402-13N□-N	13	5 / 10	24	3.45	0.21	440	13.40	51	14.63	57
CS0402-15N□-N	15	5 / 10	24	3.28	0.17	560	14.60	55	15.50	77
CS0402-16N□-N	16	5 / 10	24	3.10	0.22	560	16.60	46	18.86	47
CS0402-18N□-N	18	5 / 10	25	3.10	0.23	420	18.30	57	20.28	62
CS0402-19N□-N	19	5 / 10	24	3.04	0.20	480	19.10	50	21.10	67
CS0402-20N□-N	20	5 / 10	25	3.00	0.25	420	20.70	52	23.66	53
CS0402-22N□-N	22	5 / 10	25	2.80	0.30	400	23.20	53	26.75	53
CS0402-23N□-N	23	5 / 10	22	2.72	0.30	400	23.80	49	26.90	64
CS0402-24N□-N	24	5 / 10	25	2.70	0.30	400	25.10	51	29.50	50
CS0402-27N□-N	27	5 / 10	24	2.48	0.30	400	28.70	49	33.50	63
CS0402-30N□-N	30	5 / 10	25	2.35	0.35	400	31.10	46	38.50	39
CS0402-33N□-N	33	5 / 10	24	2.35	0.40	400	34.90	31	41.74	32
CS0402-36N□-N	36	5 / 10	24	2.32	0.44	320	39.50	44	48.40	53
CS0402-39N□-N	39	5 / 10	25	2.10	0.55	200	41.70	47	50.23	45
CS0402-40N□-N	40	5 / 10	24	2.24	0.44	320	39.00	44	47.40	33
CS0402-43N□-N	43	5 / 10	25	2.03	0.81	100	45.80	46	61.55	34
CS0402-47N□-N	47	5 / 10	20	2.10	0.83	150	50.00	38	-	-
CS0402-51N□-N	51	5 / 10	25	1.75	0.82	100	56.60	40	-	-
CS0402-56N□-N	56	5 / 10	22	1.76	0.97	100	62.80	42	-	-
CS0402-68N□-N	68	5 / 10	22	1.62	1.12	100	78.20	36	-	-
CS0402-82N□-N	82	5 / 10	20	1.26	1.55	50	-	-	-	-
CS0402-R10□-N	100	5 / 10	20	1.16	2.00	30	-	-	-	-

When ordering, please specify tolerance and packaging codes.

Test Instruments: L/Q- Agilent/HP4291A+Agilent/HP16197A at 250MHz; SRF- Agilent/HP8753D+Agilent/HP8722ES

Tolerance: J = ± 5%, K = ± 10%

Packaging: Clear tape and reel (standard)



## ELECTRICAL CHARACTERISTICS CS0603

PART NO.	INDUCTANCE (nH)	TOLERANCE (±%)	TEST FREQUENCY (MHz)	Q Min.	SRF (MHz) Min.	DC RESISTANCE (Ω) Max.	I <sub>rms</sub> (mA) Max.	900MHz		1.7GHz		COLOR CODING
								L Typ.	Q Typ.	L Typ.	Q Typ.	
CS0603-1N6□-N	1.6	5 / 10	250	24	12,500	0.030	700	1.67	49	1.65	63	Red
CS0603-1N8□-N	1.8	5 / 10	250	16	12,500	0.045	700	1.63	35	1.66	50	Black
CS0603-3N6□-N	3.6	5 / 10	250	22	5,900	0.063	700	3.72	53	3.71	65	Red
CS0603-3N9□-N	3.9	5 / 10	250	22	6,900	0.080	700	3.95	49	3.96	67	Brown
CS0603-4N3□-N	4.3	5 / 10	250	22	5,900	0.063	700	4.32	50	4.33	70	Orange
CS0603-4N7□-N	4.7	5 / 10	250	20	5,800	0.116	700	4.72	47	4.75	57	Violet
CS0603-5N1□-N	5.1	5 / 10	250	20	5,700	0.140	700	4.93	47	4.95	56	Green
CS0603-5N6□-N	5.6	5 / 10	250	20	5,800	0.170	700	5.53	56	5.86	77	Yellow
CS0603-6N3□-N	6.3	5 / 10	250	20	5,700	0.140	700	5.50	47	6.10	60	White
CS0603-6N8□-N	6.8	5 / 10	250	27	5,800	0.110	700	6.75	60	7.10	81	Red
CS0603-7N5□-N	7.5	5 / 10	250	28	4,800	0.106	700	7.70	60	7.82	65	Brown
CS0603-8N2□-N	8.2	5 / 10	250	28	4,700	0.109	700	8.30	60	8.50	60	White
CS0603-8N7□-N	8.7	5 / 10	250	28	4,600	0.109	700	8.86	62	9.32	58	Yellow
CS0603-9N5□-N	9.5	5 / 10	250	28	5,400	0.135	700	9.70	59	9.92	61	Blue
CS0603-10N□-N	10	2 / 5 / 10	250	31	4,800	0.130	700	10.0	66	10.6	83	Orange
CS0603-11N□-N	11	2 / 5 / 10	250	33	4,000	0.086	700	11.0	53	11.5	56	Gray
CS0603-12N□-N	12	2 / 5 / 10	250	35	4,000	0.130	700	12.3	72	13.5	83	Yellow
CS0603-15N□-N	15	2 / 5 / 10	250	35	4,000	0.170	700	15.4	64	16.8	89	Green
CS0603-16N□-N	16	2 / 5 / 10	250	34	3,300	0.104	700	16.2	55	17.3	52	White
CS0603-18N□-N	18	2 / 5 / 10	250	35	3,100	0.170	700	18.7	70	21.4	69	Blue
CS0603-22N□-N	22	2 / 5 / 10	250	38	3,000	0.190	700	22.8	73	26.1	71	Violet
CS0603-24N□-N	24	2 / 5 / 10	250	37	2,650	0.135	700	24.5	45	28.7	39	Black
CS0603-27N□-N	27	2 / 5 / 10	250	40	2,800	0.220	600	29.2	74	34.6	65	Gray
CS0603-30N□-N	30	2 / 5 / 10	250	37	2,250	0.144	600	31.4	47	39.9	28	Brown
CS0603-33N□-N	33	2 / 5 / 10	250	40	2,300	0.220	600	36.0	67	49.5	42	White
CS0603-36N□-N	36	2 / 5 / 10	250	38	2,080	0.250	600	39.4	47	52.7	24	Red
CS0603-39N□-N	39	2 / 5 / 10	250	40	2,200	0.250	600	42.7	60	60.2	40	Black
CS0603-43N□-N	43	2 / 5 / 10	250	39	2,000	0.280	600	47.0	44	64.9	21	Orange
CS0603-47N□-N	47	2 / 5 / 10	200	38	2,000	0.280	600	52.2	62	77.2	35	Brown
CS0603-56N□-N	56	2 / 5 / 10	200	38	1,900	0.310	600	62.5	56	97.0	26	Red
CS0603-68N□-N	68	2 / 5 / 10	200	37	1,700	0.340	600	80.5	54	168	21	Orange
CS0603-72N□-N	72	2 / 5 / 10	150	34	1,700	0.490	400	82.0	53	135	20	Yellow
CS0603-82N□-N	82	2 / 5 / 10	150	34	1,700	0.540	400	96.2	54	177	21	Green
CS0603-R10□-N	100	2 / 5 / 10	150	34	1,400	0.580	400	124.0	49	-	-	Blue
CS0603-R11□-N	110	2 / 5 / 10	150	32	1,350	0.610	300	138.0	43	-	-	Violet
CS0603-R12□-N	120	2 / 5 / 10	150	32	1,300	0.750	300	166.0	39	-	-	Gray
CS0603-R15□-N	150	2 / 5 / 10	150	28	990	0.920	280	250.0	25	-	-	White
CS0603-R18□-N	180	2 / 5 / 10	100	25	990	1.250	240	305.0	22	-	-	Black
CS0603-R22□-N	220	2 / 5 / 10	100	25	900	2.100	200	-	-	-	-	Brown
CS0603-R27□-N	270	2 / 5 / 10	100	24	900	2.800	170	-	-	-	-	Red
CS0603-R33□-N	330	2 / 5 / 10	100	25	900	3.890	100	-	-	-	-	Orange
CS0603-R39□-N	390	2 / 5 / 10	100	25	900	4.350	100	-	-	-	-	Yellow

When ordering, please specify tolerance and packaging codes.

Test Instruments: L/Q- Agilent/HP4291A+Agilent/HPI 6197A; SRF- HP8753D/HP4291A; RDC- CH502BC/HP4338B; I<sub>rms</sub>- For a 15 °C rise above 25 °C ambient.

Operating Temperature Range: -40 °C to +125 °C

Tolerance: G = ± 2%, J = ± 5%, K = ± 10%

Packaging: Clear tape and reel (standard)

**ELECTRICAL CHARACTERISTICS CS0805**

PART NO.	INDUCTANCE (nH)	TOLERANCE (±%)	TEST FREQUENCY (MHz)	Q Min.	TEST FREQUENCY (MHz)	SRF (MHz) Min.	DC RESISTANCE (Ω) Max.	I <sub>rms</sub> (mA) Max.	COLOR CODING
CS0805-2N8□-N	2.8	5 / 10	250	80	1,500	7,900	0.06	800	Gray
CS0805-3N0□-N	3.0	5 / 10	250	65	1,500	7,900	0.06	800	White
CS0805-3N3□-N	3.3	5 / 10	250	50	1,500	7,900	0.08	600	Black
CS0805-5N6□-N	5.6	5 / 10	250	65	1,000	5,500	0.08	600	Orange
CS0805-6N8□-N	6.8	5 / 10	250	50	1,000	5,500	0.11	600	Brown
CS0805-7N5□-N	7.5	5 / 10	250	50	1,000	4,500	0.14	600	Green
CS0805-8N2□-N	8.2	5 / 10	250	50	1,000	4,700	0.12	600	Red
CS0805-10N□-N	10	2 / 5 / 10	250	60	500	4,200	0.10	600	Blue
CS0805-12N□-N	12	2 / 5 / 10	250	50	500	4,000	0.15	600	Orange
CS0805-15N□-N	15	2 / 5 / 10	250	50	500	3,400	0.17	600	Yellow
CS0805-18N□-N	18	2 / 5 / 10	250	50	500	3,300	0.20	600	Green
CS0805-22N□-N	22	2 / 5 / 10	250	55	500	2,600	0.22	500	Blue
CS0805-24N□-N	24	2 / 5 / 10	250	50	500	2,000	0.22	500	Gray
CS0805-27N□-N	27	2 / 5 / 10	250	55	500	2,500	0.25	500	Violet
CS0805-33N□-N	33	2 / 5 / 10	250	60	500	2,050	0.27	500	Gray
CS0805-36N□-N	36	2 / 5 / 10	250	55	500	1,700	0.27	500	Orange
CS0805-39N□-N	39	2 / 5 / 10	250	60	500	2,000	0.29	500	White
CS0805-43N□-N	43	2 / 5 / 10	200	60	500	1,650	0.34	500	Yellow
CS0805-47N□-N	47	2 / 5 / 10	200	60	500	1,650	0.31	500	Black
CS0805-56N□-N	56	2 / 5 / 10	200	60	500	1,550	0.34	500	Brown
CS0805-68N□-N	68	2 / 5 / 10	200	60	500	1,450	0.38	500	Red
CS0805-82N□-N	82	2 / 5 / 10	150	65	500	1,300	0.42	400	Orange
CS0805-91N□-N	91	2 / 5 / 10	150	65	500	1,200	0.48	400	Black
CS0805-R10□-N	100	2 / 5 / 10	150	65	500	1,200	0.46	400	Yellow
CS0805-R11□-N	110	2 / 5 / 10	150	50	250	1,000	0.48	400	Brown
CS0805-R12□-N	120	2 / 5 / 10	150	50	250	1,100	0.51	400	Green
CS0805-R15□-N	150	2 / 5 / 10	100	50	250	920	0.56	400	Blue
CS0805-R18□-N	180	2 / 5 / 10	100	50	250	870	0.64	400	Violet
CS0805-R20□-N	200	2 / 5 / 10	100	50	250	860	0.68	400	Red
CS0805-R22□-N	220	2 / 5 / 10	100	50	250	850	0.70	400	Gray
CS0805-R24□-N	240	2 / 5 / 10	100	44	250	690	1.00	350	Red
CS0805-R25□-N	250	2 / 5 / 10	100	45	250	660	1.20	350	Yellow
CS0805-R27□-N	270	2 / 5 / 10	100	48	250	650	1.00	350	White
CS0805-R33□-N	330	2 / 5 / 10	100	48	250	600	1.40	310	Black
CS0805-R39□-N	390	2 / 5 / 10	100	48	250	560	1.50	290	Brown
CS0805-R47□-N	470	2 / 5 / 10	50	33	100	375	1.76	250	Violet
CS0805-R56□-N	560	2 / 5 / 10	25	23	50	340	1.90	230	Orange
CS0805-R62□-N	620	2 / 5 / 10	25	23	50	220	2.20	210	Yellow
CS0805-R68□-N	680	2 / 5 / 10	25	23	50	188	2.20	190	Green
CS0805-R82□-N	820	2 / 5 / 10	25	23	50	215	2.35	180	Blue
CS0805-1R0□-N	1,000	2 / 5 / 10	25	20	50	100	2.50	170	Gray

When ordering, please specify tolerance and packaging codes.

Test Instruments: L/Q- Agilent/HP4291A+Agilent/HP16197A; SRF- HP8753D/HP4291A; RDC- CH502BC/HP4338B; I<sub>rms</sub>- For a 15 °C rise above 25 °C ambient.

Operating Temperature Range: -40 °C to +125 °C

Tolerance: G = ± 2%, J = ± 5%, K = ± 10%

Packaging: Clear tape and reel (standard)



## ELECTRICAL CHARACTERISTICS CS1008

PART NO.	INDUCTANCE (nH)	TOLERANCE (±%)	TEST FREQUENCY (MHz)	Q Min.	TEST FREQUENCY (MHz)	SRF (MHz) Min.	DC RESISTANCE (Ω) Max.	I <sub>rms</sub> (mA) Max.	COLOR CODING		
									1 <sup>st</sup>	2 <sup>nd</sup>	3 <sup>rd</sup>
CSI008-10N□-N	10	2 / 5 / 10	50	50	500	4,100	0.08	1,000	Brown	Black	Black
CSI008-12N□-N	12	2 / 5 / 10	50	50	500	3,300	0.09	1,000	Brown	Red	Black
CSI008-15N□-N	15	2 / 5 / 10	50	50	500	2,500	0.10	1,000	Brown	Green	Black
CSI008-18N□-N	18	2 / 5 / 10	50	50	350	2,500	0.11	1,000	Brown	Gray	Black
CSI008-22N□-N	22	2 / 5 / 10	50	55	350	2,400	0.12	1,000	Red	Red	Black
CSI008-27N□-N	27	2 / 5 / 10	50	55	350	1,600	0.13	1,000	Red	Violet	Black
CSI008-33N□-N	33	2 / 5 / 10	50	60	350	1,600	0.14	1,000	Orange	Orange	Black
CSI008-39N□-N	39	2 / 5 / 10	50	60	350	1,500	0.15	1,000	Orange	White	Black
CSI008-47N□-N	47	2 / 5 / 10	50	65	350	1,500	0.16	1,000	Yellow	Violet	Black
CSI008-56N□-N	56	2 / 5 / 10	50	65	350	1,300	0.18	1,000	Green	Blue	Black
CSI008-68N□-N	68	2 / 5 / 10	50	65	350	1,300	0.20	1,000	Blue	Gray	Black
CSI008-82N□-N	82	2 / 5 / 10	50	60	350	1,000	0.22	1,000	Gray	Red	Black
CSI008-R10□-N	100	2 / 5 / 10	25	60	350	1,000	0.56	650	Brown	Black	Brown
CSI008-R12□-N	120	2 / 5 / 10	25	60	350	950	0.63	650	Brown	Red	Brown
CSI008-R15□-N	150	2 / 5 / 10	25	45	100	850	0.70	580	Brown	Green	Brown
CSI008-R18□-N	180	2 / 5 / 10	25	45	100	750	0.77	620	Brown	Gray	Brown
CSI008-R22□-N	220	2 / 5 / 10	25	45	100	700	0.84	500	Red	Red	Brown
CSI008-R27□-N	270	2 / 5 / 10	25	45	100	600	0.91	500	Red	Violet	Brown
CSI008-R33□-N	330	2 / 5 / 10	25	45	100	570	1.05	450	Orange	Orange	Brown
CSI008-R39□-N	390	2 / 5 / 10	25	45	100	500	1.12	470	Orange	White	Brown
CSI008-R47□-N	470	2 / 5 / 10	25	45	100	450	1.19	470	Yellow	Violet	Brown
CSI008-R56□-N	560	2 / 5 / 10	25	45	100	415	1.33	400	Green	Blue	Brown
CSI008-R62□-N	620	2 / 5 / 10	25	45	100	375	1.40	300	Blue	Red	Brown
CSI008-R68□-N	680	2 / 5 / 10	25	45	100	375	1.47	400	Blue	Gray	Brown
CSI008-R75□-N	750	2 / 5 / 10	25	45	100	360	1.54	360	Violet	Green	Brown
CSI008-R82□-N	820	2 / 5 / 10	25	45	100	350	1.61	400	Gray	Red	Brown
CSI008-R91□-N	910	2 / 5 / 10	25	35	50	320	1.68	380	White	Brown	Brown
CSI008-1R0□-N	1,000	2 / 5 / 10	25	35	50	290	1.75	370	Brown	Black	Red
CSI008-1R2□-N	1,200	2 / 5 / 10	7.90	35	50	250	2.00	310	Brown	Red	Red
CSI008-1R5□-N	1,500	2 / 5 / 10	7.90	28	50	200	2.30	330	Brown	Green	Red
CSI008-1R8□-N	1,800	2 / 5 / 10	7.90	28	50	160	2.60	300	Brown	Gray	Red
CSI008-2R2□-N	2,200	2 / 5 / 10	7.90	28	50	160	2.80	280	Red	Red	Red
CSI008-2R7□-N	2,700	2 / 5 / 10	7.90	22	25	140	3.20	290	Red	Violet	Red
CSI008-3R3□-N	3,300	2 / 5 / 10	7.90	22	25	110	3.40	290	Orange	Orange	Red
CSI008-3R9□-N	3,900	2 / 5 / 10	7.90	20	25	100	3.60	260	Orange	White	Red
CSI008-4R7□-N	4,700	2 / 5 / 10	7.90	20	25	90	4.00	260	Yellow	Violet	Red
CSI008-5R6□-N	5,600	2 / 5 / 10	7.90	18	7.9	45	4.00	240	Green	Blue	Red
CSI008-6R8□-N	6,800	2 / 5 / 10	7.90	18	7.9	40	4.90	200	Blue	Gray	Red
CSI008-8R2□-N	8,200	2 / 5 / 10	7.90	18	7.9	25	6.00	170	Gray	Red	Red
CSI008-100□-N	10,000	2 / 5 / 10	2.52	18	7.9	25	8.00	150	Brown	Black	Orange

When ordering, please specify tolerance and packaging codes.

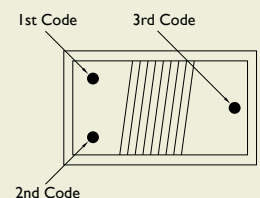
Test Instruments: L/Q- Agilent/HP4291A+Agilent/HPI16197A; SRF- HP8753D/HP4291A;  
RDC- CH502BC/HP4338B; I<sub>rms</sub>- For a 15 °C rise above 25 °C ambient.

Operating Temperature Range: -40 °C to +125 °C

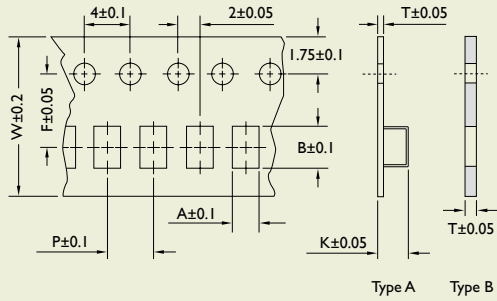
Tolerance: G = ± 2%, J = ± 5%, K = ± 10%

Packaging: Clear tape and reel (standard)

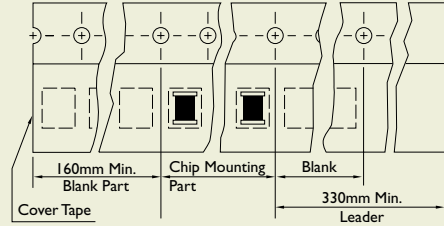
### Color Coding



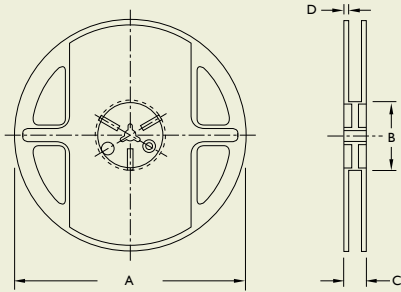
## TAPE DIMENSIONS



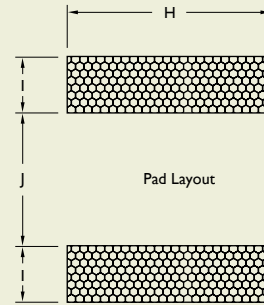
## TAPE MATERIAL



## REEL DIMENSIONS



## RECOMMENDED PATTERN



Dimensions: mm

TYPE	TAPE DIMENSIONS								TAPE TYPE	RECOMMENDED PATTERN			REEL DIMENSIONS				QUANTITY/ REEL
	A	B	T	W	P	F	K	UNIT		H	I	J	A	B	C	D	
CS0402	0.74	1.23	0.68	8	2	3.50	-	B	inch	0.026	0.014	0.018	178	60	12	1.5	4,000
									mm	0.66	0.36	0.46					
CS0603	1.23	1.90	0.97	8	4	3.50	-	B	inch	0.040	0.025	0.025	178	60	12	1.5	4,000
									mm	1.02	0.64	0.64					
CS0805	1.85	2.45	0.23	8	4	3.50	1.45	A	inch	0.070	0.040	0.030	178	60	12	1.5	2,000
									mm	1.78	1.02	0.76					
CS1008	2.80	2.95	0.23	8	4	3.50	2.20	A	inch	0.100	0.040	0.050	178	60	16	1.5	2,000
									mm	2.54	1.02	1.27					

# Mouser Electronics

Authorized Distributor

Click to View Pricing, Inventory, Delivery & Lifecycle Information:

Yageo:

[CS0805-1R0J-N](#) [CS0805-33NJ-N](#) [CS0805-39NJ-N](#) [CS0805-R68J-N](#) [CS0805-82NJ-N](#)



Компания «ЭлектроПласт» предлагает заключение долгосрочных отношений при поставках импортных электронных компонентов на взаимовыгодных условиях!

Наши преимущества:

- Оперативные поставки широкого спектра электронных компонентов отечественного и импортного производства напрямую от производителей и с крупнейших мировых складов;
- Поставка более 17-ти миллионов наименований электронных компонентов;
- Поставка сложных, дефицитных, либо снятых с производства позиций;
- Оперативные сроки поставки под заказ (от 5 рабочих дней);
- Экспресс доставка в любую точку России;
- Техническая поддержка проекта, помощь в подборе аналогов, поставка прототипов;
- Система менеджмента качества сертифицирована по Международному стандарту ISO 9001;
- Лицензия ФСБ на осуществление работ с использованием сведений, составляющих государственную тайну;
- Поставка специализированных компонентов (Xilinx, Altera, Analog Devices, Intersil, Interpoint, Microsemi, Aeroflex, Peregrine, Syfer, Eurofarad, Texas Instrument, Miteq, Cobham, E2V, MA-COM, Hittite, Mini-Circuits, General Dynamics и др.);

Помимо этого, одним из направлений компании «ЭлектроПласт» является направление «Источники питания». Мы предлагаем Вам помощь Конструкторского отдела:

- Подбор оптимального решения, техническое обоснование при выборе компонента;
- Подбор аналогов;
- Консультации по применению компонента;
- Поставка образцов и прототипов;
- Техническая поддержка проекта;
- Защита от снятия компонента с производства.



#### Как с нами связаться

**Телефон:** 8 (812) 309 58 32 (многоканальный)

**Факс:** 8 (812) 320-02-42

**Электронная почта:** [org@eplast1.ru](mailto:org@eplast1.ru)

**Адрес:** 198099, г. Санкт-Петербург, ул. Калинина, дом 2, корпус 4, литера А.