

## GABRIELLA-MIDI-S

~10° spot beam with holder and installation tape

### TECHNICAL SPECIFICATIONS:

Dimensions	Ø 37.8 mm
Height	24.1 mm
Fastening	tape, pin
ROHS compliant	yes ⓘ

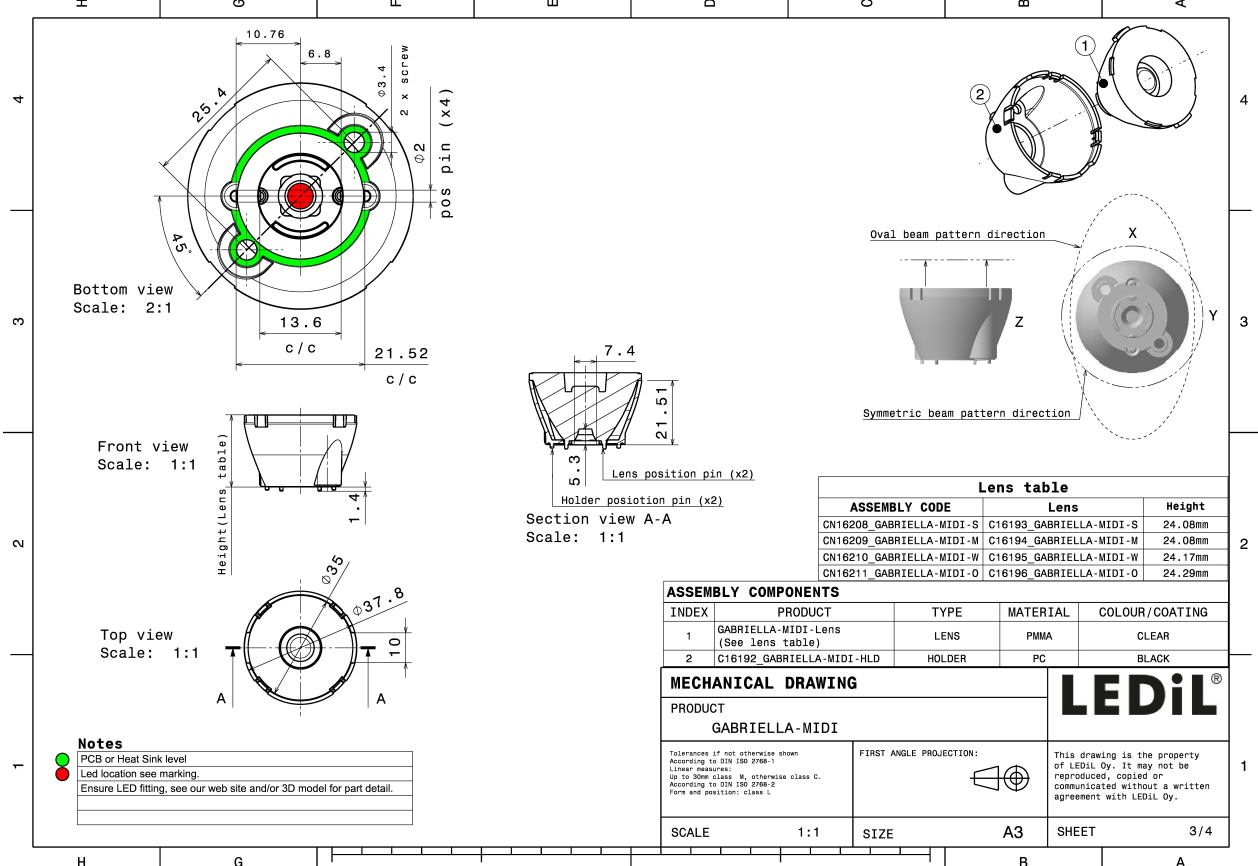
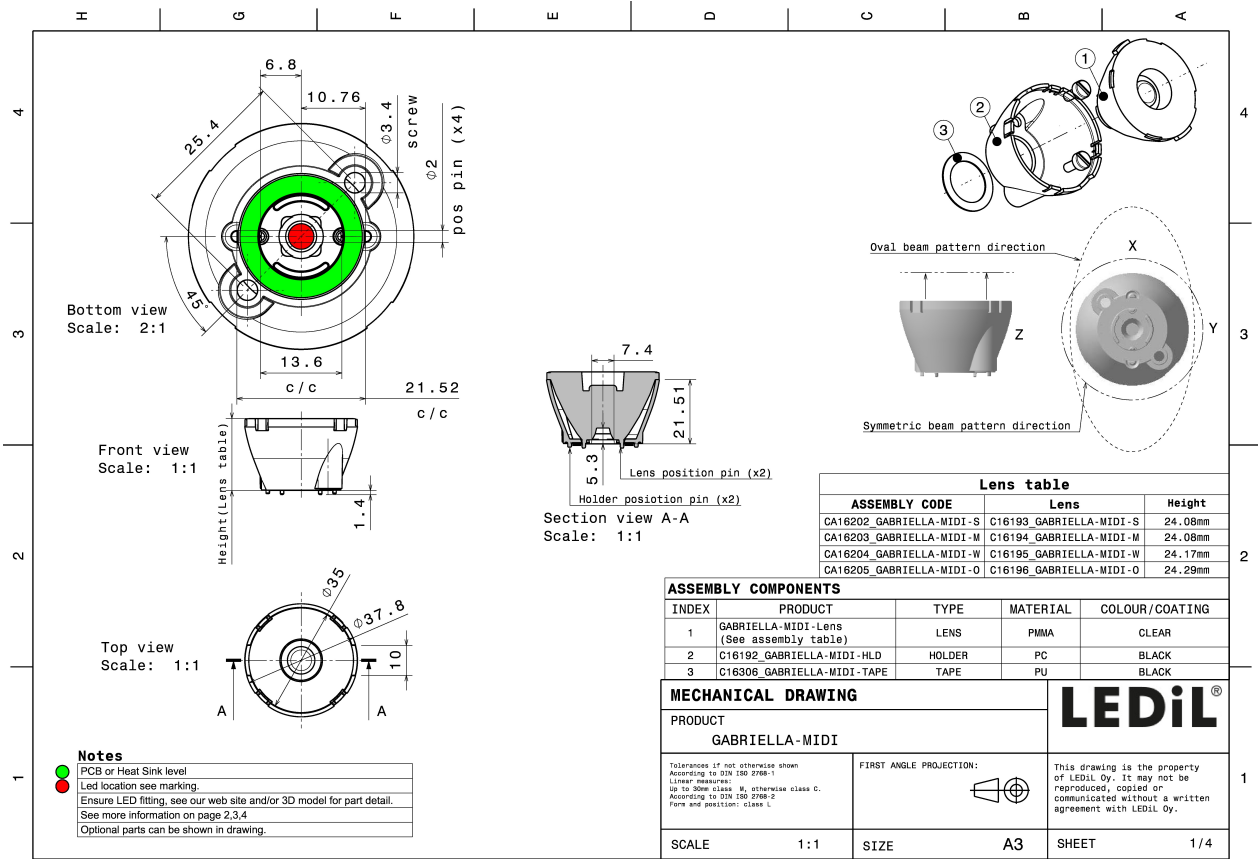
### MATERIAL SPECIFICATIONS:

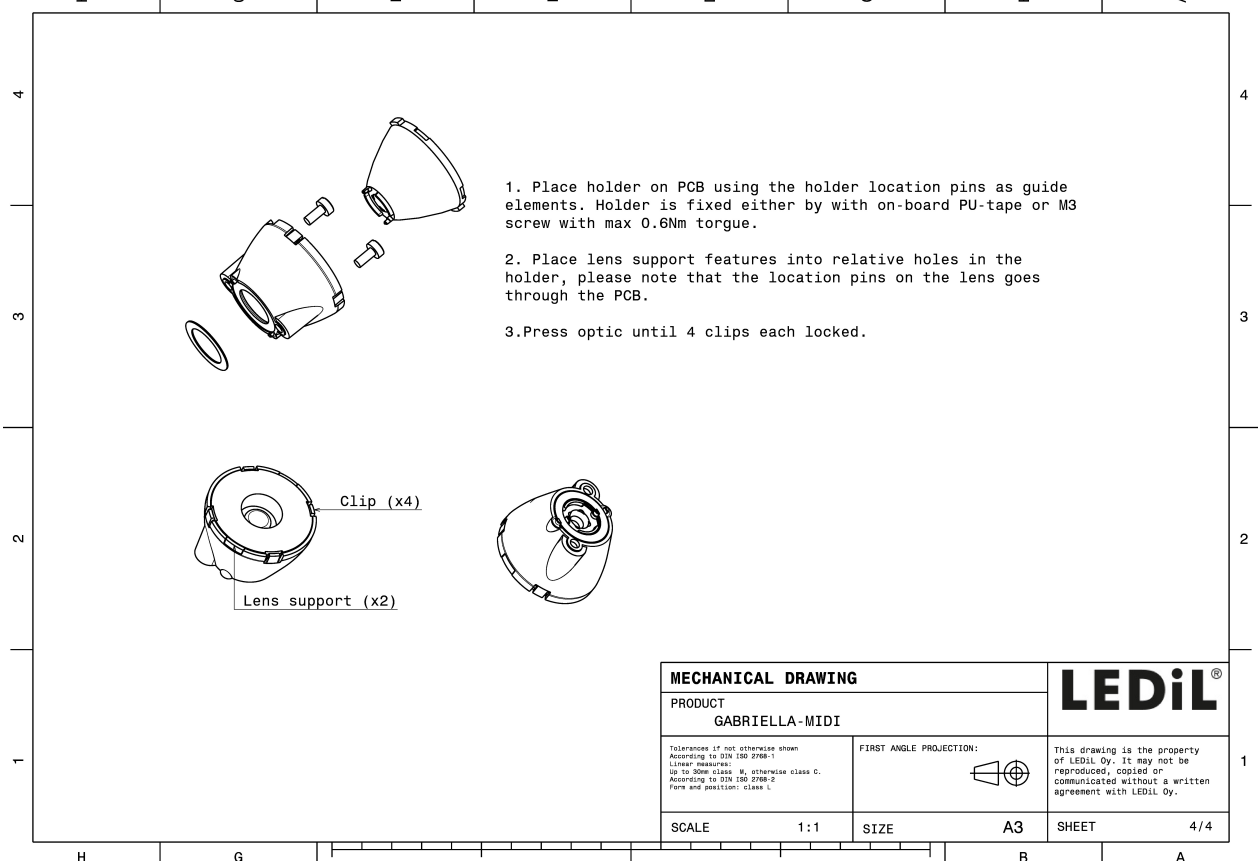
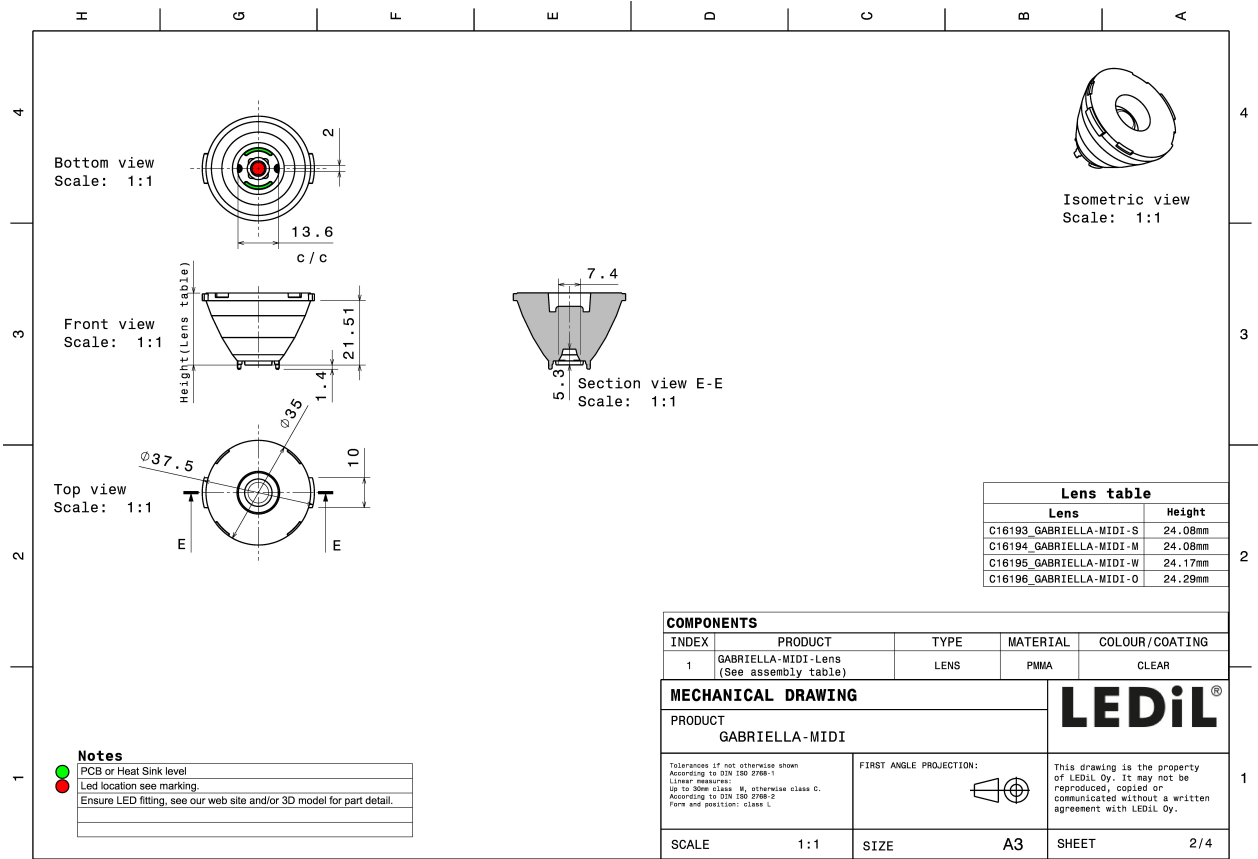
Component	Type	Material	Colour	Finish
GABRIELLA-MIDI-S	Single lens	PMMA	clear	
GABRIELLA-MIDI-HLD	Holder	PC	black	
GABRIELLA-MIDI-TAPE	Tape	PU tape	black	



### ORDERING INFORMATION:

Component	Type	Qty in box	MOQ	MPQ	Box weight (kg)
CA16202_GABRIELLA-MIDI-S	Single lens	500	100	50	11.7
» Box size: 476 x 273 x 292 mm					

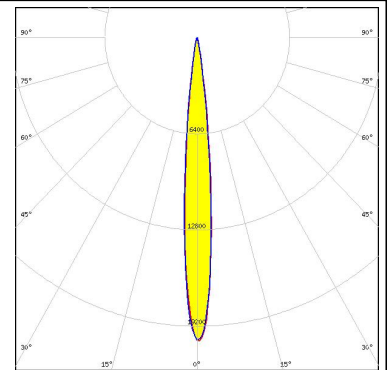
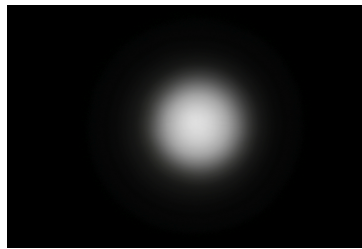




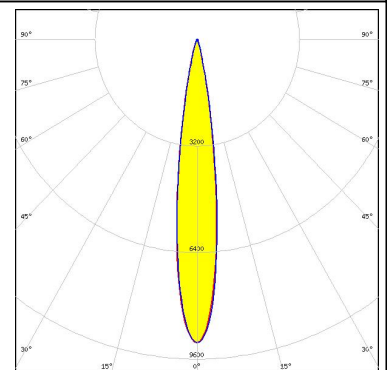
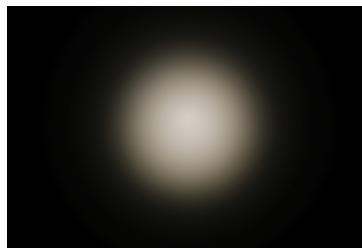
#### PHOTOMETRIC DATA (MEASURED):



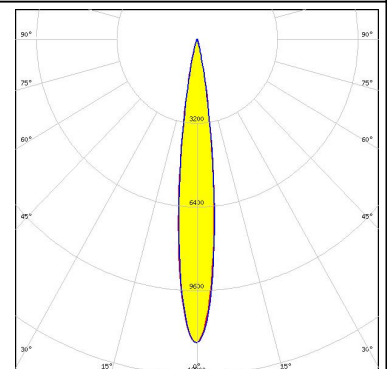
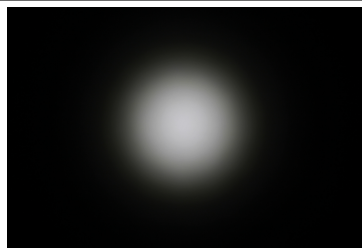
LED XHP35 HI  
 FWHM 10.0°  
 Efficiency 90 %  
 Peak intensity 20.4 cd/lm  
 LEDs/each optic 1  
 Light colour White  
 Required components:



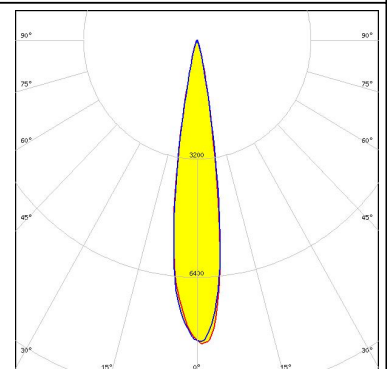
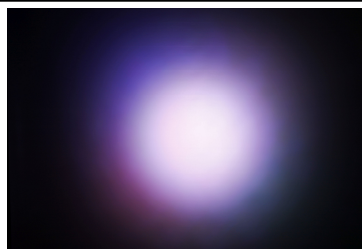
LED XHP50.2  
 FWHM 15.0°  
 Efficiency 87 %  
 Peak intensity 9.1 cd/lm  
 LEDs/each optic 1  
 Light colour White  
 Required components:



LED LUXEON 5050 Round LES  
 FWHM 14.0°  
 Efficiency 91 %  
 Peak intensity 12.6 cd/lm  
 LEDs/each optic 1  
 Light colour White  
 Required components:



LED LUXEON C  
 FWHM 17.0°  
 Efficiency 85 %  
 Peak intensity 8.2 cd/lm  
 LEDs/each optic 1  
 Light colour RGBW  
 Required components:

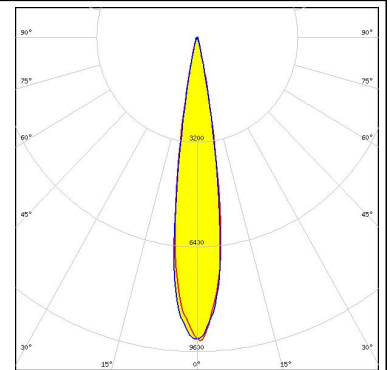
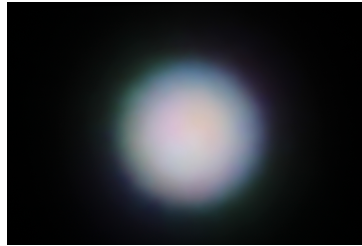




#### PHOTOMETRIC DATA (MEASURED):

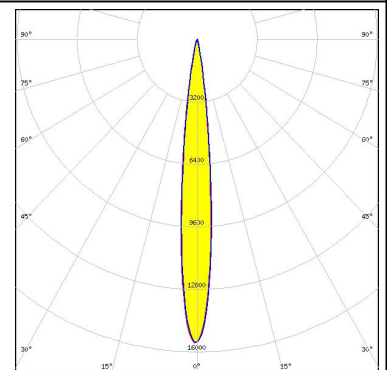
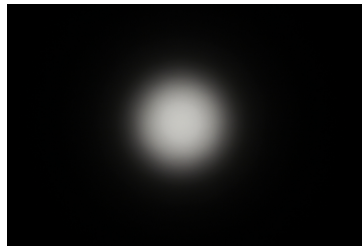
##### LUMILEDS

LED LUXEON CZ  
 FWHM 16.0°  
 Efficiency 89 %  
 Peak intensity 9.3 cd/lm  
 LEDs/each optic 4  
 Light colour RGBW  
 Required components:



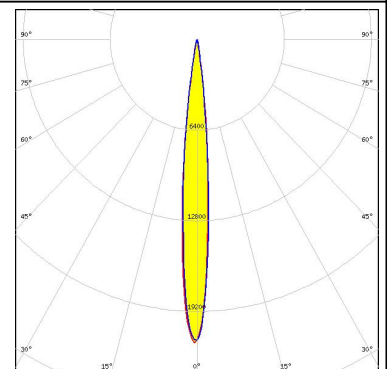
##### LUMILEDS

LED LUXEON V  
 FWHM 11.0°  
 Efficiency 89 %  
 Peak intensity 15.5 cd/lm  
 LEDs/each optic 1  
 Light colour White  
 Required components:



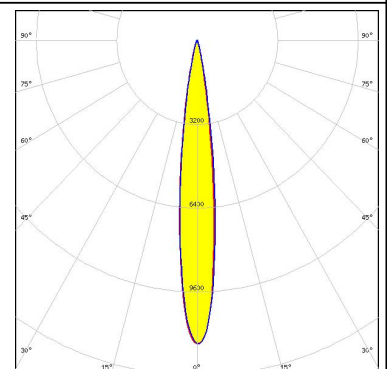
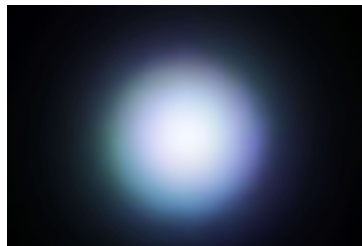
##### LUMINUS

LED SBM-40-RGBW  
 FWHM 10.0°  
 Efficiency 89 %  
 Peak intensity 21.5 cd/lm  
 LEDs/each optic 1  
 Light colour White  
 Required components:



##### NICHIA

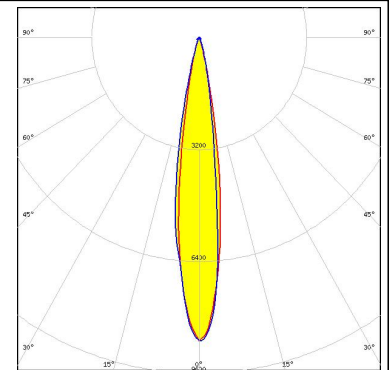
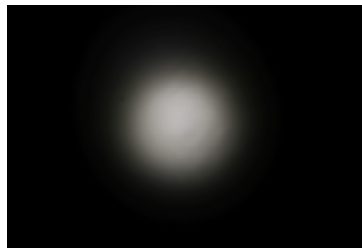
LED NCSxE17A  
 FWHM 13.0°  
 Efficiency 92 %  
 Peak intensity 11.6 cd/lm  
 LEDs/each optic 4  
 Light colour RGBW  
 Required components:



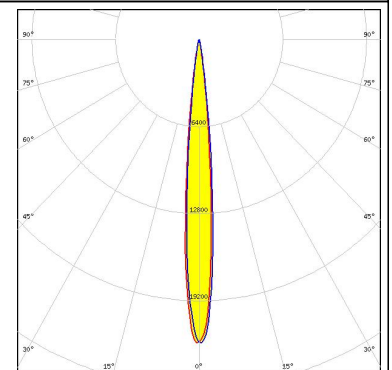
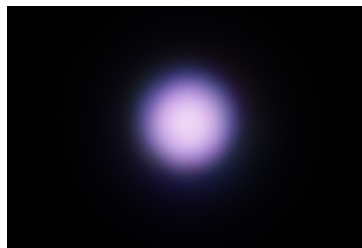
#### PHOTOMETRIC DATA (MEASURED):



**LED** NVSW219F  
**FWHM** 16.0°  
**Efficiency** 89 %  
**Peak intensity** 8.7 cd/lm  
**LEDs/each optic** 1  
**Light colour** White  
**Required components:**

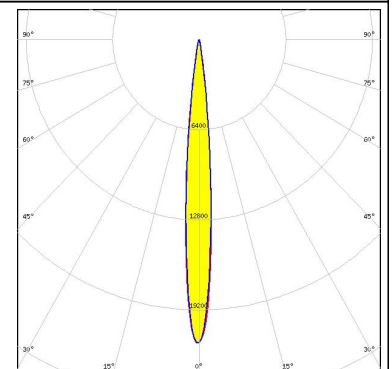
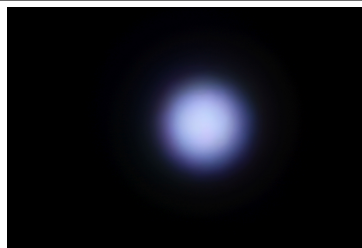


**LED** OSTAR Stage (S2WP)  
**FWHM** 10.0°  
**Efficiency** 91 %  
**Peak intensity** 22 cd/lm  
**LEDs/each optic** 1  
**Light colour** White  
**Required components:**



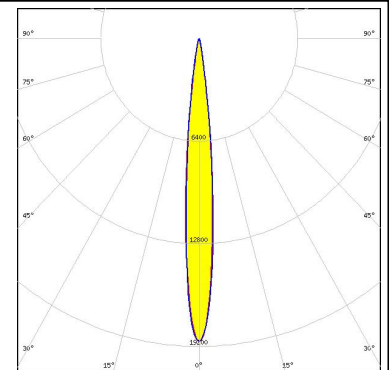
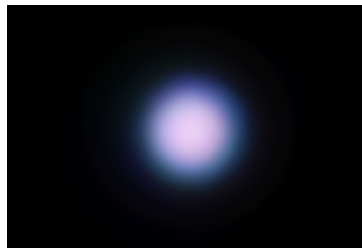
SEOUL SEMICONDUCTOR

**LED** SPF05F0A  
**FWHM** 10.0°  
**Efficiency** 89 %  
**Peak intensity** 21.6 cd/lm  
**LEDs/each optic** 1  
**Light colour** RGBW  
**Required components:**



SEOUL SEMICONDUCTOR

**LED** SPF05F0B  
**FWHM** 11.0°  
**Efficiency** 90 %  
**Peak intensity** 18.9 cd/lm  
**LEDs/each optic** 1  
**Light colour** RGBW  
**Required components:**



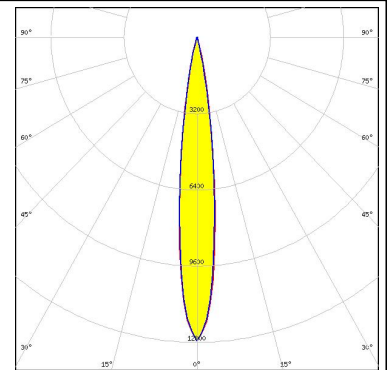
### PHOTOMETRIC DATA (MEASURED):



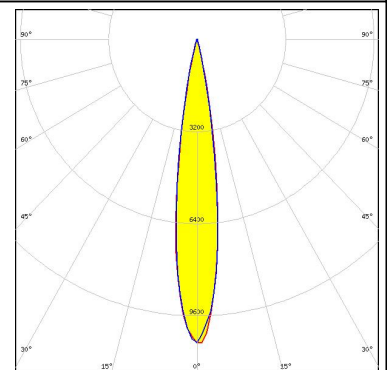
#### PHOTOMETRIC DATA (SIMULATED):



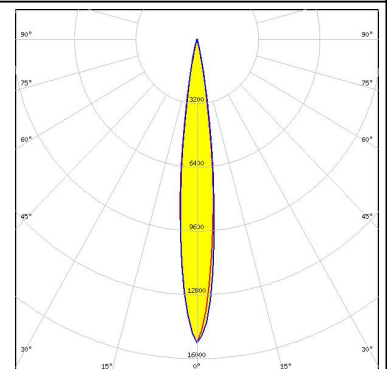
LED CLQ6A-TKW  
 FWHM 13.7°  
 Efficiency 94 %  
 Peak intensity 12.7 cd/lm  
 LEDs/each optic 1  
 Light colour RGBW  
 Required components:



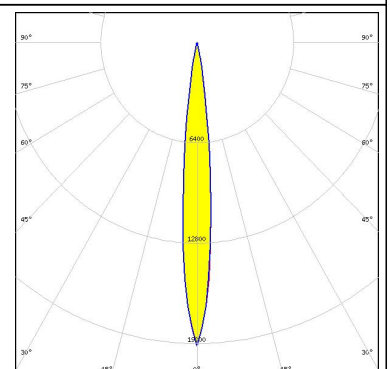
LED XHP50  
 FWHM 16.0°  
 Efficiency 91 %  
 Peak intensity 10.7 cd/lm  
 LEDs/each optic 1  
 Light colour White  
 Required components:



LED XM-L RGB  
 FWHM 13.0°  
 Efficiency 93 %  
 Peak intensity 15.2 cd/lm  
 LEDs/each optic 1  
 Light colour White  
 Required components:



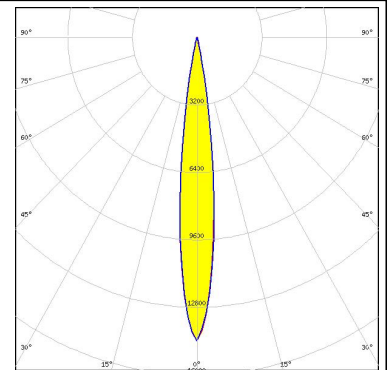
LED XP-G2 HE  
 FWHM 11.0°  
 Efficiency 92 %  
 Peak intensity 19.4 cd/lm  
 LEDs/each optic 1  
 Light colour White  
 Required components:



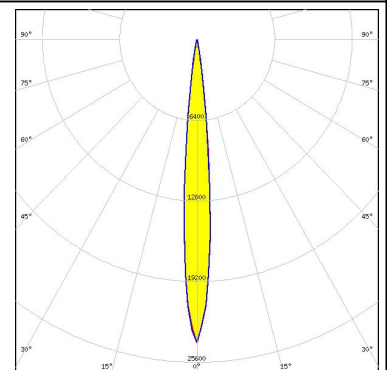
#### PHOTOMETRIC DATA (SIMULATED):



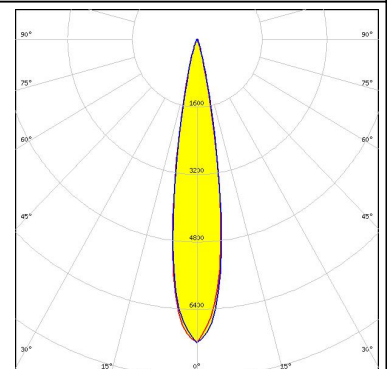
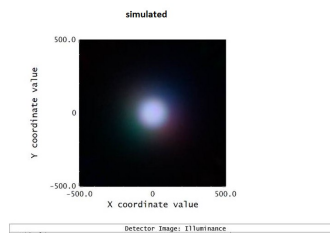
LED XQ-E HI  
 FWHM 14.0°  
 Efficiency 90 %  
 Peak intensity 14.4 cd/lm  
 LEDs/each optic 4  
 Light colour RGBW  
 Required components:



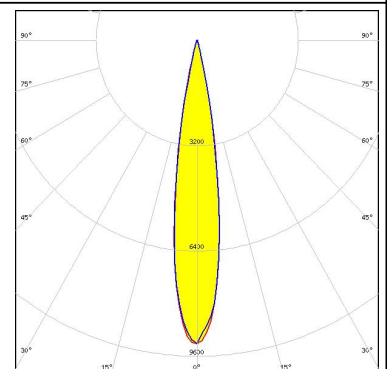
LED XT-E  
 FWHM 10.0°  
 Efficiency 91 %  
 Peak intensity 24.1 cd/lm  
 LEDs/each optic 1  
 Light colour White  
 Required components:



LED LUXEON C  
 FWHM 18.0 + °  
 Efficiency 86 %  
 Peak intensity 7.2 cd/lm  
 LEDs/each optic 4  
 Light colour RGBW  
 Required components:



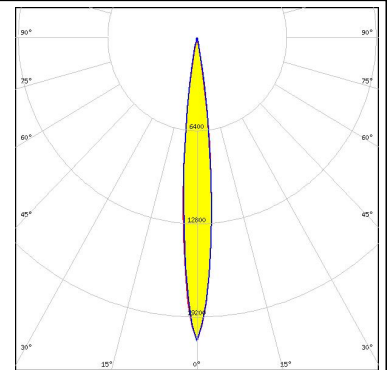
LED LUXEON M/MX  
 FWHM 17.0°  
 Efficiency 91 %  
 Peak intensity 9.3 cd/lm  
 LEDs/each optic 1  
 Light colour White  
 Required components:



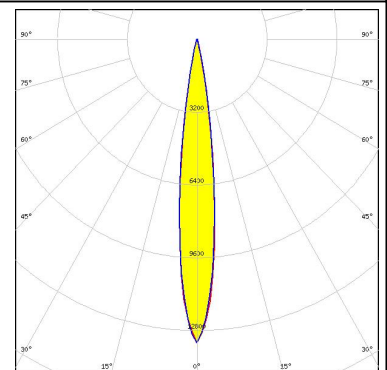
#### PHOTOMETRIC DATA (SIMULATED):



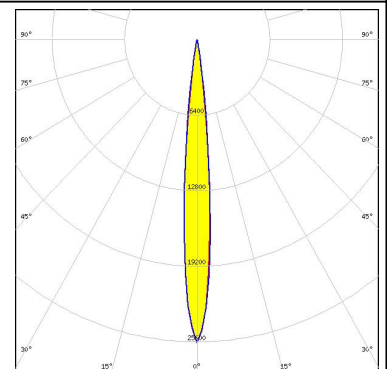
**LED** LUXEON Z  
**FWHM** 11.0°  
**Efficiency** 91 %  
**Peak intensity** 21 cd/lm  
**LEDs/each optic** 4  
**Light colour** RGBW  
**Required components:**



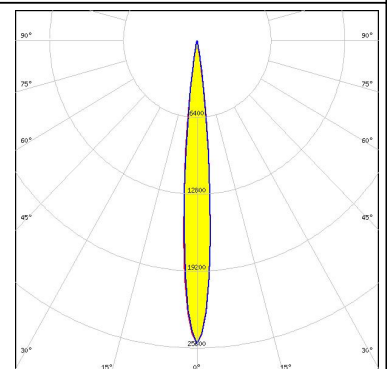
**LED** Duris S8  
**FWHM** 14.0°  
**Efficiency** 92 %  
**Peak intensity** 13.5 cd/lm  
**LEDs/each optic** 1  
**Light colour** White  
**Required components:**



**LED** OSCONIQ P 3737 (2W version)  
**FWHM** 10.0°  
**Efficiency** 94 %  
**Peak intensity** 25.7 cd/lm  
**LEDs/each optic** 1  
**Light colour** White  
**Required components:**



**LED** OSLOM Square CSSRM2/CSSRM3  
**FWHM** 10.0°  
**Efficiency** 93 %  
**Peak intensity** 25.3 cd/lm  
**LEDs/each optic** 1  
**Light colour** White  
**Required components:**

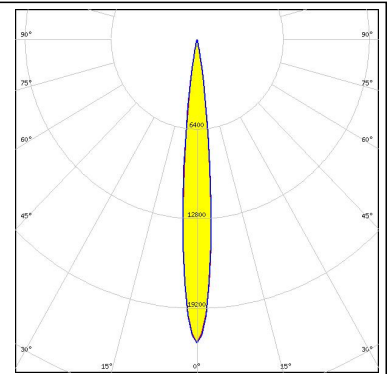




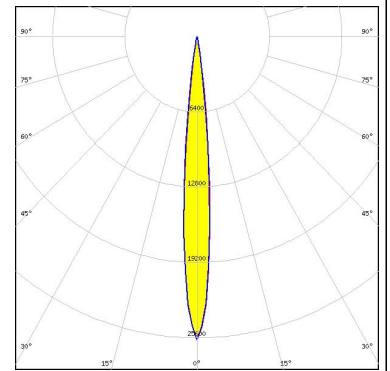
#### PHOTOMETRIC DATA (SIMULATED):

#### SAMSUNG

LED LH351B  
FWHM 11.0°  
Efficiency 93 %  
Peak intensity 21.7 cd/lm  
LEDs/each optic 1  
Light colour White  
Required components:



SEOUL SEMICONDUCTOR  
LED Z5M1/Z5M2  
FWHM 10.0°  
Efficiency 93 %  
Peak intensity 25.8 cd/lm  
LEDs/each optic 1  
Light colour White  
Required components:



#### GENERAL INFORMATION:

NOTE: The typical beam angle will be changed by different color, chip size and chip position tolerance. The typical total beam angle is the full angle measured where the luminous intensity is half of the peak value.

#### MATERIALS:

As part of our continuous research and improvement processes, and to ensure the best possible quality and availability of our products, LEDiL reserves the right to change material grades without notice.

#### PRODUCT DATA USER AGREEMENT AND DISCLAIMER:

The measured data in the provided downloadable LEDiL Product Datasheets and Mechanical 2D-Drawings is rounded and provided as reference for planning. LEDiL Oy's optical specifications have been verified by conducting performance testing of the products in accordance with the company's quality system. The reported data are averaged results of multiple measurements with typical variation. LEDiL Oy reserves the right to without prior notification make changes and improvements to its products.

LEDiL Oy assumes neither warranty, nor guarantee nor any other liability of any kind for the contents and correctness of the provided data. The provided data has been generated with highest diligence but the provided data may in reality not represent the complete possible variation range of all intrinsic parameters. Therefore, in certain cases a deviation from the provided data could occur.

LEDiL Oy reserves the right to undertake technical changes of its products without further notification which could lead to changes in the provided data. LEDiL Oy assumes no liability of any kind for the possible deviation from any provided data or any other damage resulting from the usage of the provided data.

The user agrees to this disclaimer and user agreement with the download or usage of the provided files.

#### LEDiL Oy

Joensuunkatu 13  
FI-24240 SALO  
Finland

#### LEDiL Inc.

228 West Page Street  
Suite D  
Sycamore IL 60178  
USA

#### Local sales and technical support

[www.ledil.com/  
where\\_to\\_buy](http://www.ledil.com/where_to_buy)

#### Shipping locations

Salo, Finland  
Hong Kong, China

#### Distribution Partners

[www.ledil.com/  
where\\_to\\_buy](http://www.ledil.com/where_to_buy)



Компания «ЭлектроПласт» предлагает заключение долгосрочных отношений при поставках импортных электронных компонентов на взаимовыгодных условиях!

Наши преимущества:

- Оперативные поставки широкого спектра электронных компонентов отечественного и импортного производства напрямую от производителей и с крупнейших мировых складов;
- Поставка более 17-ти миллионов наименований электронных компонентов;
- Поставка сложных, дефицитных, либо снятых с производства позиций;
- Оперативные сроки поставки под заказ (от 5 рабочих дней);
- Экспресс доставка в любую точку России;
- Техническая поддержка проекта, помощь в подборе аналогов, поставка прототипов;
- Система менеджмента качества сертифицирована по Международному стандарту ISO 9001;
- Лицензия ФСБ на осуществление работ с использованием сведений, составляющих государственную тайну;
- Поставка специализированных компонентов (Xilinx, Altera, Analog Devices, Intersil, Interpoint, Microsemi, Aeroflex, Peregrine, Syfer, Eurofarad, Texas Instrument, Miteq, Cobham, E2V, MA-COM, Hittite, Mini-Circuits, General Dynamics и др.);

Помимо этого, одним из направлений компании «ЭлектроПласт» является направление «Источники питания». Мы предлагаем Вам помощь Конструкторского отдела:

- Подбор оптимального решения, техническое обоснование при выборе компонента;
- Подбор аналогов;
- Консультации по применению компонента;
- Поставка образцов и прототипов;
- Техническая поддержка проекта;
- Защита от снятия компонента с производства.



#### Как с нами связаться

**Телефон:** 8 (812) 309 58 32 (многоканальный)

**Факс:** 8 (812) 320-02-42

**Электронная почта:** [org@eplast1.ru](mailto:org@eplast1.ru)

**Адрес:** 198099, г. Санкт-Петербург, ул. Калинина, дом 2, корпус 4, литера А.