


## Convenience Outlets

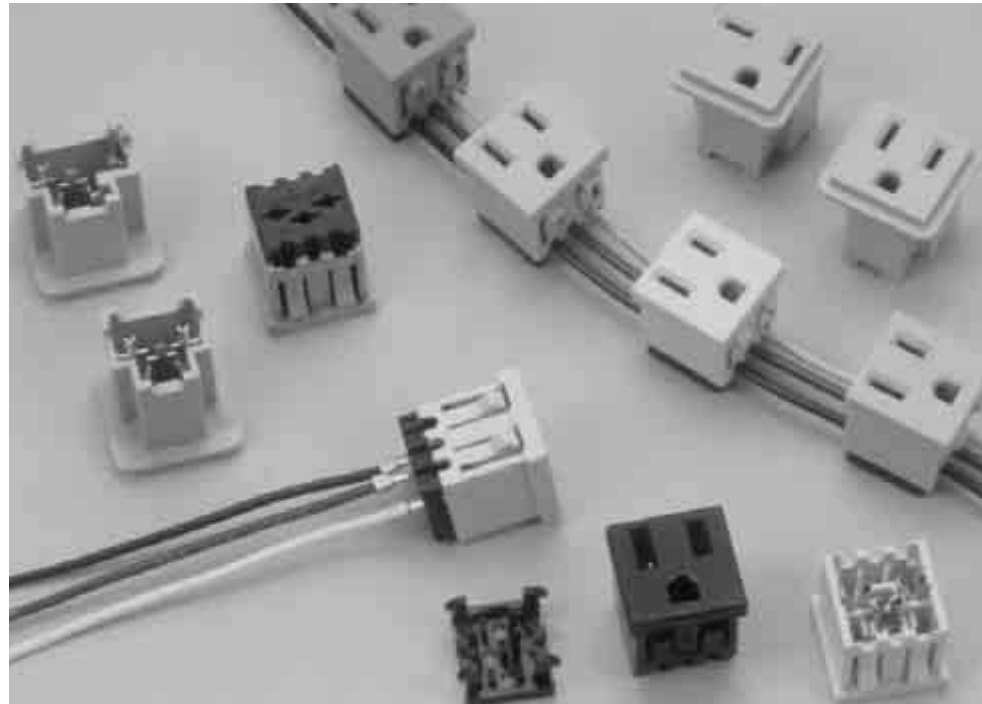
### Product Facts

- Panel-mount connector snaps in without the use of tools and holds securely without retention hardware
- Terminates solid copper wire using striplless insulation displacement terminals
- Terminates wire end or allows wire to feed thru
- Alternate connection uses FASTON 205 Series tabs (see Catalog 82004)
- Panel-mount connectors available in two sizes:  
14-12 AWG [2-3 mm<sup>2</sup>]  
18-16 AWG [0.8-1.4 mm<sup>2</sup>]
- Rated under the Component Recognition Program of Underwriters Laboratories Inc., File No. E146448,  except for 213727-1

- Designed to UL Performance Std. 498

- Certified by Canadian Standards Association,  File No. LR-7189A  
15 A, 12-14 AWG [3-2 mm<sup>2</sup>]  
13 A, 16 AWG [1.4 mm<sup>2</sup>]  
10 A, 18 AWG [0.8 mm<sup>2</sup>]

File No. LR-7189A  
(213727-1 only)



The convenience outlets offer a fast and easy way to add an AC power outlet to a variety of electrical and/or electronic equipment. The connectors are available to snap-in to panels or to be mounted on a printed circuit board. The end applications vary from use in applications such as

multiple outlet strips and uninterruptible power supplies to industrial applications where a convenient AC power outlet is needed to be installed to the equipment in order to power external devices.

The panel-mount connectors use insulation displacement

technology to terminate the contacts to solid wires (from 18 AWG to 12 AWG). The printed circuit mounted connectors include both outlet jacks which are touch-safe and input jacks, which accept custom molded power cord receptacles.

### Technical Documents

#### Instruction Sheets

408-6669 — 14-12 AWG [2-3 mm<sup>2</sup>]

IDC version

408-6698 — 18-16 AWG [0.8-1.4 mm<sup>2</sup>]

IDC version

For more information, request Catalog 82067.

**Convenience Outlets — Panel-Mount**

**Current Rating —**

14-12 AWG — 15A  
16 AWG — 13A  
18 AWG — 10A

**Material**

**Housing** — thermoplastic

**Contact** — Copper alloy

**205 Series FASTON Tab**  
**Part Number 62531-1\***

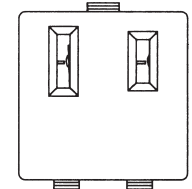
**Specifications**

**Wire Range** — 18-14 AWG  
[0.8-2 mm<sup>2</sup>]

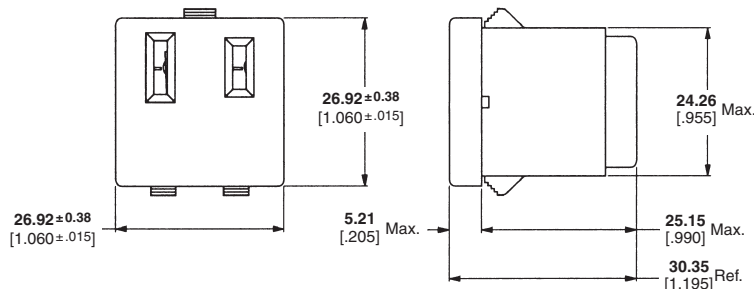
**Insulation Diameter** —  
.120-.150 [3.05-3.81]

**Material and Finish** —  
Brass, tin plated

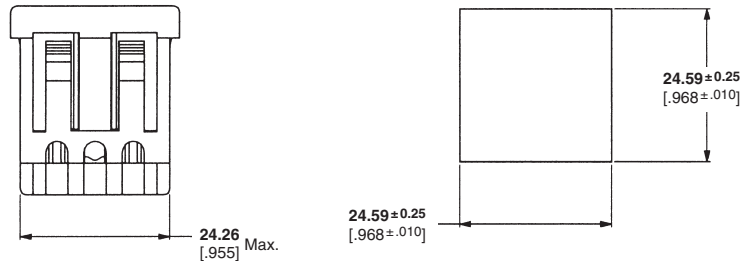
No. of Contacts	Part Numbers			Housing Color
	14-12 AWG [2-3 mm <sup>2</sup> ]	18-16 AWG 0.8-1.4 mm <sup>2</sup> ]	Panel Plug	
2 Plus Ground	208979-2	208697-2	—	Black
	208979-4	208697-4	—	Almond
	1-208979-0	—	—	Platinum
	1-208979-1	—	—	Gray
	1-208979-2	—	—	Orange
	1-208979-4	—	—	Putty White
2 (No Ground)	213878-1	—	—	Black
0 (Blank)	—	—	796285-1	Black



Part Number 213878-1



\*Reverse reeled for use in Model "K" Terminating Machine Part Number 585435-5 using Heavy Duty Miniature (HDM) Applicator Part Number 567069-2 or in Leadmakers using HDM Applicator Part Number 567069-1



**Recommended Panel Cutout**  
Panel Thickness — 0.76-1.78 [0.30-.070]

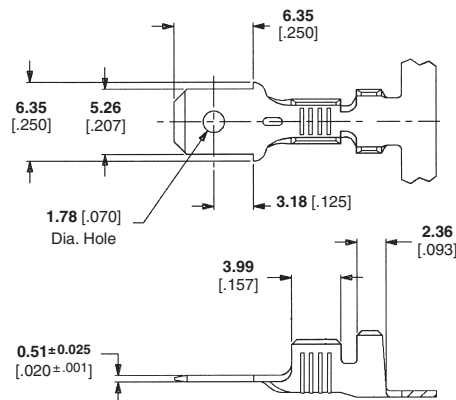
**205 Series FASTON Tab**  
**Part Number 62531-1\*\***

**Specifications**

**Wire Range** — 18-14 AWG  
[0.8-2 mm<sup>2</sup>]

**Insulation Diameter** —  
.120-.150 [3.05-3.81]

**Material and Finish** —  
Brass, tin plated



\*\*Reeled for use in Model "G" and Model "K" Terminating Machine using Heavy Duty Miniature Applicator Part Number 567069-1

**Note:** All part numbers are RoHS compliant.

**Convenience Outlets — PCB-Mount**

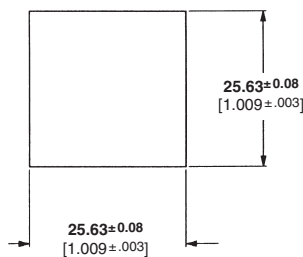
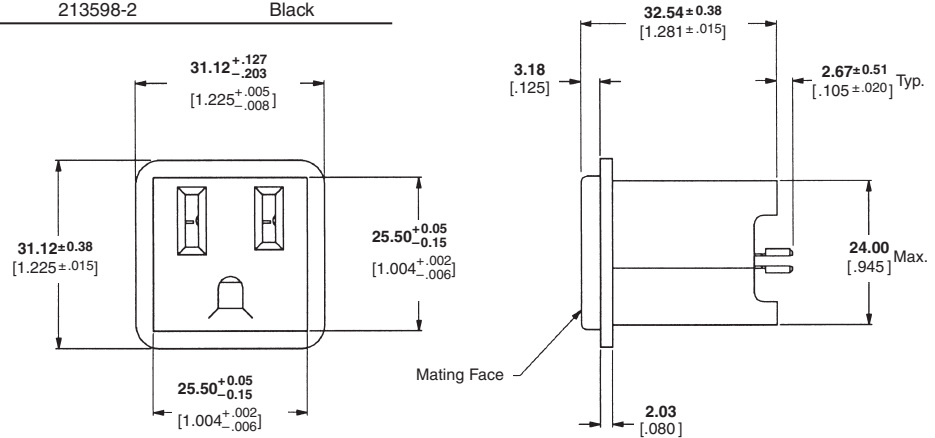
**15 Amps**

**Material and Finish**

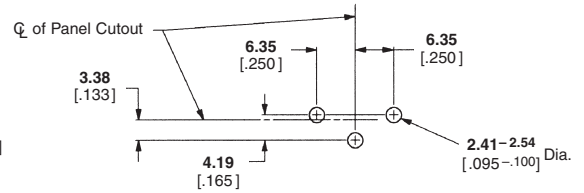
**Housing** — Nylon

**Contacts** — Brass plated .000100 [0.00254] min. tin-lead for a minimum length of .195 [4.95] on end opposite mating face, over .000050 [0.00127] min. nickel on entire contact

Part Numbers	Housing Color
213598-1	Gray
213598-2	Black



**Recommended Panel Cutout**



**Recommended Hole Pattern**

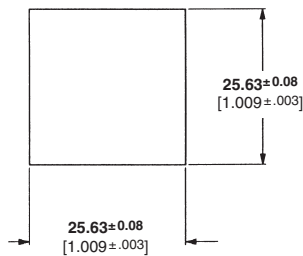
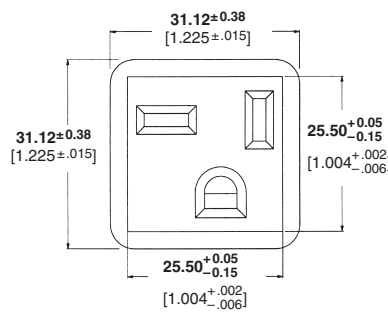
**20 Amps**

**Part Number 213727-1**

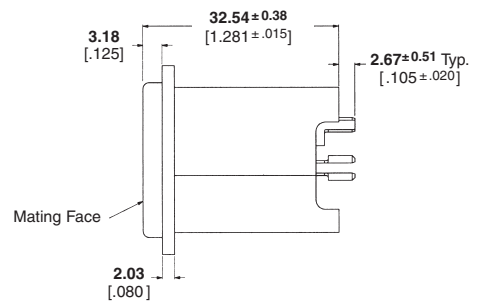
**Material and Finish**

**Housing** — Nylon, Gray

**Contacts** — Brass plated .000100 [0.00254] min. tin-lead for a minimum length of .195 [4.95] on end opposite mating face, over .000050 [0.00127] min. nickel on entire contact



**Recommended Panel Cutout**



**Recommended Hole Pattern**

**Note:** All part numbers are RoHS compliant.

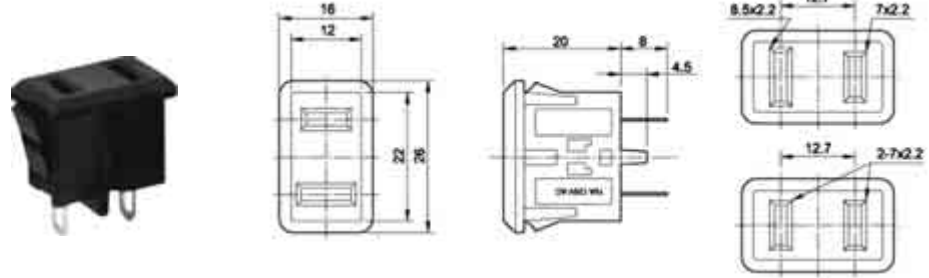
**Convenience Outlets**

**Product Facts**

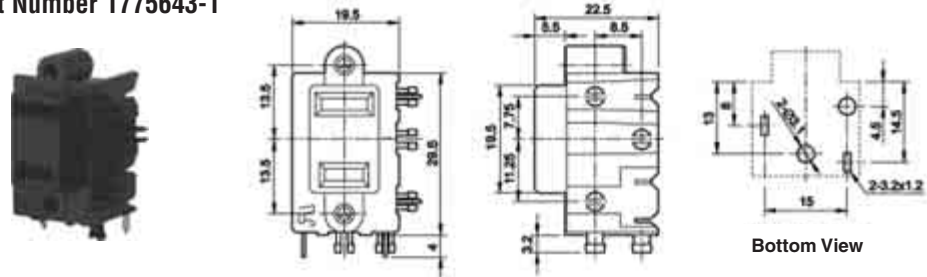
- PCB Mountable
- 15A Output (outlet) Jacks
- 7A Input Jacks
- Connectors feature PCB retention features
- Horizontal or Vertical Mount
- Combination Jacks ideal for compact inverters — saves space vs. separate input/output connectors

For specific part numbers, contact Tyco Electronics

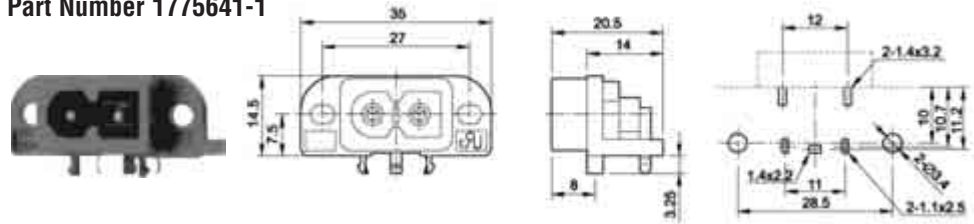
**AC Output Jack  
Panel-Mount with Solder Tabs  
Part Number 1775640-1**



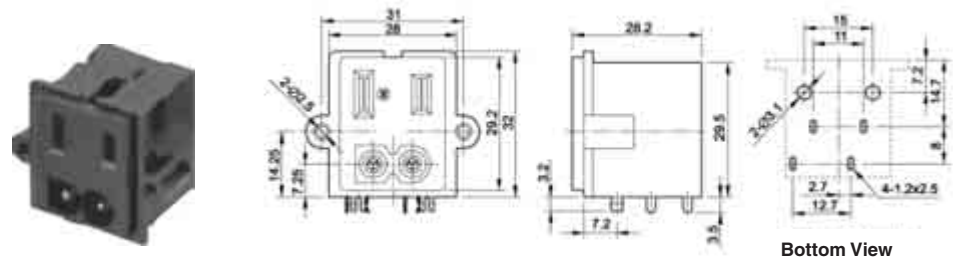
**AC Output Jack  
PCB-Mount  
Part Number 1775643-1**



**AC Input Jack  
PCB-Mount  
Part Number 1775641-1**



**Combination Input/Output Jack  
PCB-Mount  
Part Number 1775642-1 (UL94 V-1)  
Part Number 1-1775642-1 (UL94 V-0)**



**Note:** All part numbers are RoHS compliant.

## CORCOM EMI/RFI Filter Products

### Product Facts

- Broad range of single and three phase power line filters, IEC power inlet filters and power entry modules
- Wide range of current ratings
  - Power line filters (up to 400 amps)
  - IEC power inlet filters (up to 20 amps)
  - Power entry modules (up to 15 amps)
- Various termination options including:
  - Standard receptacle (IEC)
  - Quick connect
  - Stud termination
  - DIN type terminal block
- Safety agency approvals
- Complimentary screen room testing
- Consultation services
- Custom solutions available
- Technical support line to answer customer inquiries
  - CORCOMTechHelp@tycoelectronics.com
  - 847-573-6597



As electronic equipment becomes more complex, the need for proper filtering increases. Tyco Electronics offers a complete line of CORCOM filter products for controlling EMI/RFI in practically any application. CORCOM brand products are recognized globally as effective solutions for bringing electrical/electronic products into compliance with safety agency standards for EMI emissions and protecting equipment from the effects of incoming electronic noise.

Power line filters, IEC power inlet filters and power entry modules are available in a wide range of current ratings, termination styles and filtering performance. In addition to the extensive selection of catalog products, custom solutions are also available. All products are RoHS compliant and have safety agency approvals. For more detailed information on CORCOM brand products, visit our CORCOM website at [www.corcom.com](http://www.corcom.com).

For more information, request Catalog 1654001.

## CORCOM DB Products

### Product Facts

- Compact connector for high-current DC applications
- Reliable performance in a compact assembly
- 60A DC current rating
- Polarized mating scheme
- Easy customer termination of power source
- Plug and receptacle available preterminated with standard wire lengths

### Standard and Specs

#### RFI Filter

- UL1283 Recognized
- CSA Certified C22.2 No.8/TUV Certified EN60950-1 (Filter)

#### Connector System

- UL1977 Recognized/CSA 182.3 Certified (through UL)
- TUV Certified EN61984

### Application Tooling

#### (Unterminated Contacts Only)

- Insertion/Extraction tool recommended:  
Part Number 1643922-1 (for DBR/DBP only)
- No hand tool available. Must crimp per Tyco Electronics' application spec 114-13206
- Crimp tool: M22520/23-01
- Indenter head: M22520/23-04
- Locator: M22520/23-11

### Accessories

- Connector system locking kit available. (Contact Tyco Electronics)



### Applications

- Telecom equipment
- Automotive equipment
- Data communications
- Power distribution panels

Tyco Electronics has expanded the CORCOM product line with a new power inlet filter. Available in four levels of filtering and an unfiltered version, these inlets are designed to accept up to 60 amps of current at 150 volts DC (UL/CSA) and 120 volts DC (TUV) in the filtered versions and 300 volts AC or DC in the unfiltered version. Filtered versions include the basic clean-up DBJ style through the higher performing DB style and DBX style which provides up to 68dB

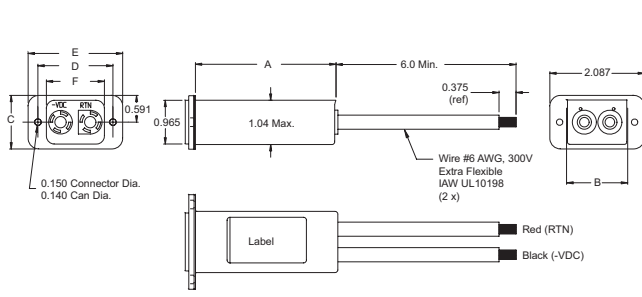
insertion loss within the 150kHz to 30Mhz frequency range. The DBF style uses feedthrough capacitors for improved high-frequency performance. Power input terminals are Tyco Electronics' #4 AWG ELCON "drawer style" contacts. The filters' load sides come prewired with #6 AWG hi-flex stranded wire. The unfiltered plugs and receptacles are available with pre-terminated, hi-flex wire of various lengths.

**Note: Tool required to disengage mated connector pair when using locking kit.**

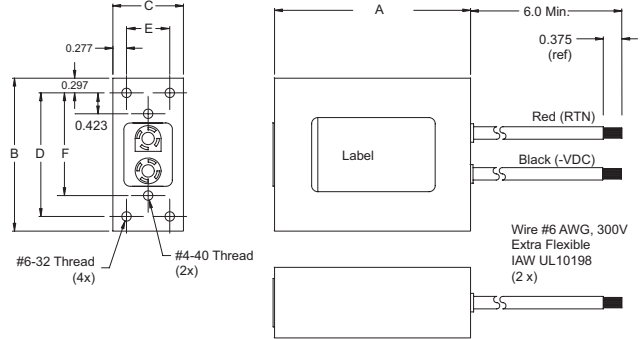
**WARNING: This is not approved for hot swap or current interruption in DC applications. Doing so will result in irreparable damage to contact.**

**Note:** All part numbers are RoHS compliant.

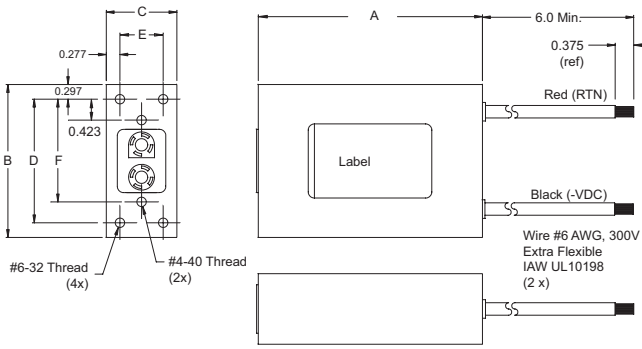
**CORCOM DB Products** (Continued)



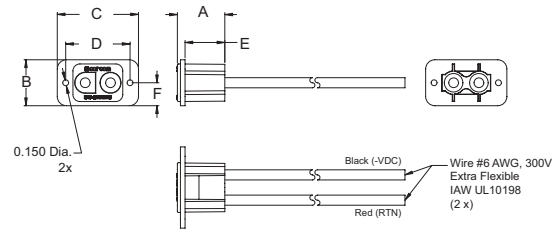
**Part Number 60DBJ8**



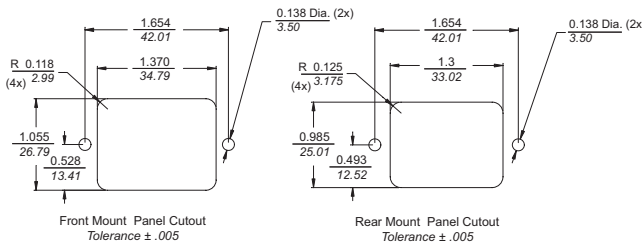
**Part Number 60DB8 and 60DBF8**



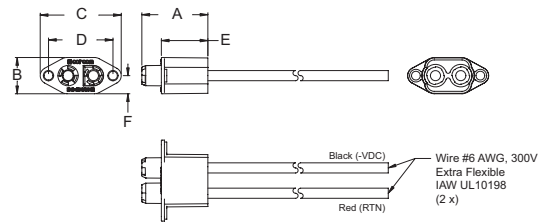
**Part Number 60DBX8**



**Part Number 60DBRL**



**Part Number 60DBRL and 60DBJ8**  
**Panel Cutout**



**Part Number 60DBPL**

**Product Offering**

- Part Number 60DBR** — Connector housing, receptacle with retention clips
- Part Number 60DBP** — Connector housing, plug with retention clips
- Part Number 60DBPL1** — Mating connector plug terminated with 1 foot cable
- Part Number 60DBPL3** — Mating connector plug terminated with 3 foot cable
- Part Number 60DBPL9** — Mating connector plug terminated with 9 foot cable
- Part Number 60DBRL1** — Receptacle terminated with 1 foot cable
- Part Number 60DBRL3** — Receptacle terminated with 3 foot cable
- Part Number 60DBJ8** — Filter assembly with 6 inch wire leads
- Part Number 60DB8** — Filter assembly with conventional wire leaded capacitors
- Part Number 60DBF8** — Filter assembly with feedthrough capacitors
- Part Number 60DBX8** — High performance filter assembly

**Case Dimensions**

Part Number	Dimensions					
	A Max.	B Max.	C ±.025 ±0.635	D ±.025 ±0.635	E ±.025 ±0.635	F ±.025 ±0.635
60DBJ8	3.2	1.36	1.181	1.654	2.087	1.280
60DB8	81.28	34.54	29.997	42.012	53.01	32.51
60DBF8	4.06	3.20	1.45	2.50	.875	2.077
60DBX	103.12	81.28	36.83	63.50	22.23	52.76
60DBX	6.06	3.50	1.45	2.876	.875	2.265
60DBX	153.92	88.90	36.83	73.05	22.23	57.53
60DBRL	1.22*	1.181*	2.087	1.654	1.023	.591
60DBRL	30.98	29.99*	53.009	42.011	25.984	15.01
60DBPL	1.695*	.93*	2.08	1.654	1.195	.465
60DBPL	43.05	23.62*	52.832	42.011	30.353	11.81

\* ±.025 [±0.635]

**WARNING:** This is not approved for hot swap or current interruption in DC applications. Doing so will result in irreparable damage to contact.

**Note:** All part numbers are RoHS compliant.

**CORCOM DB Products** (Continued)

**Electrical Schematics**

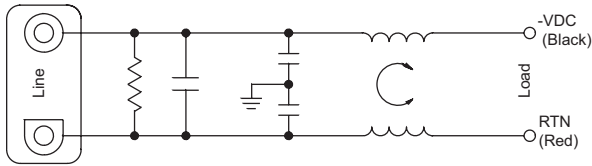
**Line-to-ground in 50 ohm circuit (Frequency MHz)**

Part Number	0.01	0.015	0.5	1	5	10	20	30	50	100
60DBJ8	—	—	—	1	13	21	30	40	30	20

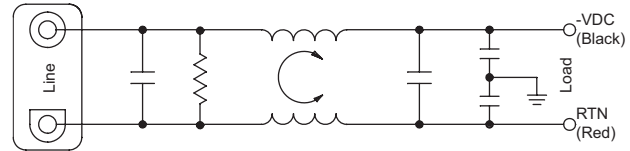
Part Number	0.05	0.1	0.15	0.5	1	3	5	10	20	30
60DB8	2	7	10	23	30	48	38	28	20	16
60DBF8	15	22	25	35	42	50	58	54	38	36
60DBX8	—	10	16	40	48	54	60	51	40	36

**Line-to-line in 50 ohm circuit (Frequency MHz)**

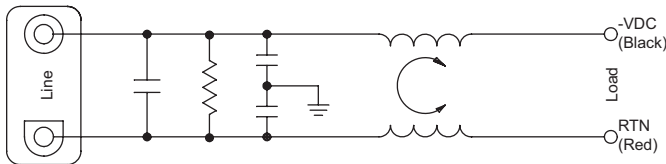
Part Number	0.05	0.1	0.15	0.5	1	3	5	10	20	30
60DBJ8	—	5	8	19	26	36	34	26	20	16
60DB8	20	26	29	43	53	30	30	24	20	18
60DBF8	9	15	18	30	34	40	44	44	48	52
60DBX8	31	30	30	70	70	54	50	60	54	50



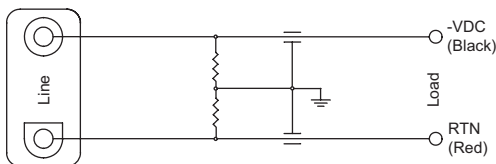
Part Number 60DBJ8



Part Number 60DBX8



Part Number 60DB8



Part Number 60DBF8

AC Inputs

**WARNING:** This is not approved for hot swap or current interruption in DC applications. Doing so will result in irreparable damage to contact.

**Note:** All part numbers are RoHS compliant.





Компания «ЭлектроПласт» предлагает заключение долгосрочных отношений при поставках импортных электронных компонентов на взаимовыгодных условиях!

Наши преимущества:

- Оперативные поставки широкого спектра электронных компонентов отечественного и импортного производства напрямую от производителей и с крупнейших мировых складов;
- Поставка более 17-ти миллионов наименований электронных компонентов;
- Поставка сложных, дефицитных, либо снятых с производства позиций;
- Оперативные сроки поставки под заказ (от 5 рабочих дней);
- Экспресс доставка в любую точку России;
- Техническая поддержка проекта, помощь в подборе аналогов, поставка прототипов;
- Система менеджмента качества сертифицирована по Международному стандарту ISO 9001;
- Лицензия ФСБ на осуществление работ с использованием сведений, составляющих государственную тайну;
- Поставка специализированных компонентов (Xilinx, Altera, Analog Devices, Intersil, Interpoint, Microsemi, Aeroflex, Peregrine, Syfer, Eurofarad, Texas Instrument, Miteq, Cobham, E2V, MA-COM, Hittite, Mini-Circuits, General Dynamics и др.);

Помимо этого, одним из направлений компании «ЭлектроПласт» является направление «Источники питания». Мы предлагаем Вам помощь Конструкторского отдела:

- Подбор оптимального решения, техническое обоснование при выборе компонента;
- Подбор аналогов;
- Консультации по применению компонента;
- Поставка образцов и прототипов;
- Техническая поддержка проекта;
- Защита от снятия компонента с производства.



#### Как с нами связаться

**Телефон:** 8 (812) 309 58 32 (многоканальный)

**Факс:** 8 (812) 320-02-42

**Электронная почта:** [org@eplast1.ru](mailto:org@eplast1.ru)

**Адрес:** 198099, г. Санкт-Петербург, ул. Калинина, дом 2, корпус 4, литера А.