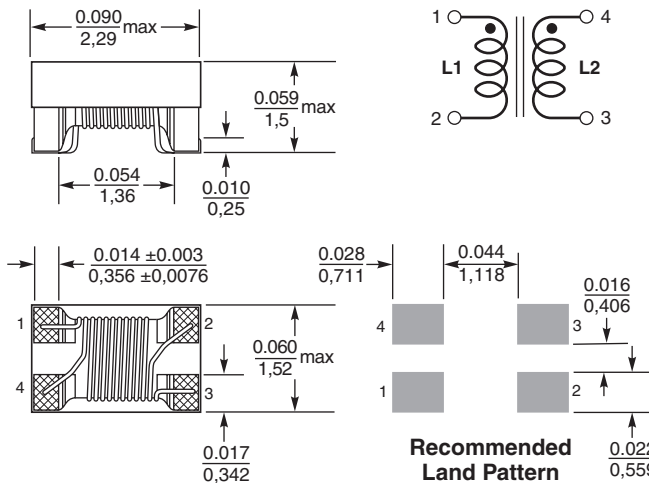
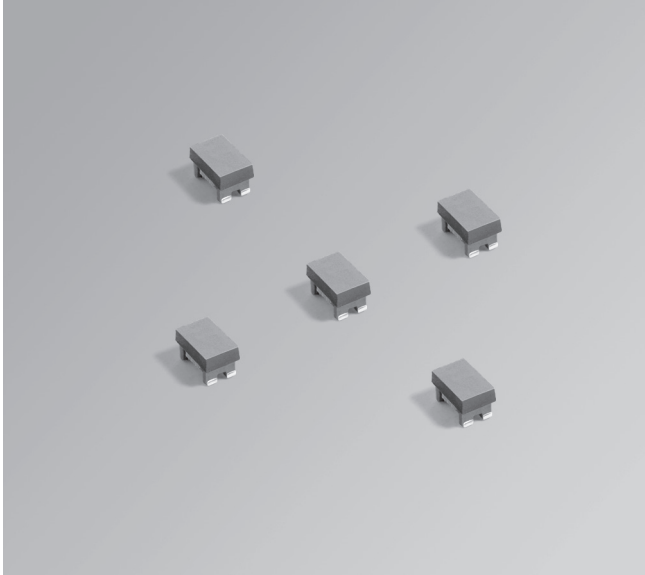


**NEW!**

# Coupled Chip Inductors – PFD2015

For Flyback and SEPIC applications

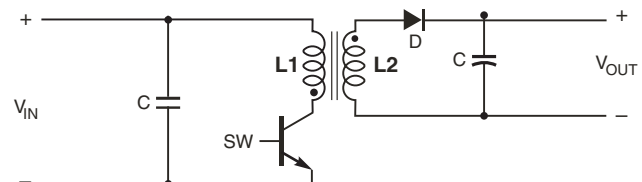


Dimensions are in inches/mm

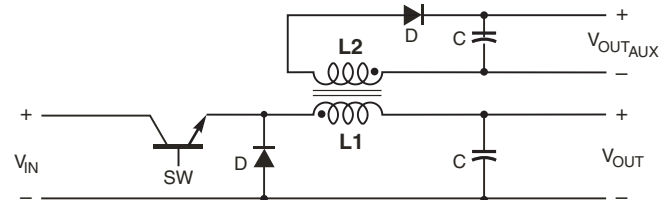
With a footprint of  $2.2 \times 1.45$  mm, the PFD2015 is Coilcraft's smallest shielded coupled inductor. It is ideal for use in a variety of circuits including flyback, multi-output buck and SEPIC.

These inductors provide high efficiency and excellent current handling for parts this small.

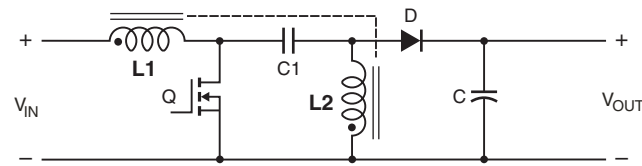
They can also be used as two single inductors connected in series or parallel, as common mode chokes or as wideband transformers.



**Typical Flyback Converter**



**Typical Buck Converter with auxiliary output**



**Typical SEPIC schematic**

Refer to Application Note, Document 639, "Selecting Coupled Inductors for SEPIC Applications"

**Core material** Ferrite

**Environmental** RoHS compliant, halogen free

**Weight** 13 – 23 mg

**Terminations** RoHS compliant silver-palladium-platinum-glass frit.

**Ambient temperature**  $-40^{\circ}\text{C}$  to  $+85^{\circ}\text{C}$  with Irms current,  $+85^{\circ}\text{C}$  to  $+125^{\circ}\text{C}$  with derated current

**Storage temperature** Component:  $-40^{\circ}\text{C}$  to  $+125^{\circ}\text{C}$ .

Tape and reel packaging:  $-40^{\circ}\text{C}$  to  $+80^{\circ}\text{C}$

**Winding to winding isolation** 250 Vrms, one minute

**Resistance to soldering heat** Max three 40 second reflows at  $+260^{\circ}\text{C}$ , parts cooled to room temperature between cycles

**Moisture Sensitivity Level (MSL)** 1 (unlimited floor life at  $<30^{\circ}\text{C}$  / 85% relative humidity)

**Failures in Time (FIT) / Mean Time Between Failures (MTBF)**

38 per billion hours / 26,315,789 hours, calculated per Telcordia SR-332

**Packaging** 2000/7" reel; 7500/13" reel Plastic tape: 8 mm wide, 0.23 mm thick, 4 mm pocket spacing, 1.63 mm pocket depth

**PCB washing** Only pure water or alcohol recommended



www.coilcraft.com

**US** +1-847-639-6400 sales@coilcraft.com

**UK** +44-1236-730595 sales@coilcraft-europe.com

**Taiwan** +886-2-2264 3646 sales@coilcraft.com.tw

**China** +86-21-6218 8074 sales@coilcraft.com.cn

**Singapore** + 65-6484 8412 sales@coilcraft.com.sg

Document 1005F-1 Revised 03/29/12

© Coilcraft Inc. 2012

This product may not be used in medical or high risk applications without prior Coilcraft approval. Specification subject to change without notice. Please check out web site for latest information.



# NEW!

## PFD2015 Coupled Inductors for SEPIC applications

| Part number <sup>1</sup> | Inductance <sup>2</sup><br>±20% (µH) | DCR<br>max <sup>3</sup><br>(Ohms) | SRF<br>typ <sup>4</sup><br>(MHz) | Coupling<br>coefficient<br>typ | Leakage<br>inductance <sup>5</sup><br>typ (µH) | Isat (A) <sup>6</sup> |             |             | Irms (A)                      |                             |
|--------------------------|--------------------------------------|-----------------------------------|----------------------------------|--------------------------------|--|-----------------------|-------------|-------------|-------------------------------|-----------------------------|
|                          |                                      |                                   |                                  |                                |  | 10%<br>drop           | 20%<br>drop | 30%<br>drop | both<br>windings <sup>7</sup> | one<br>winding <sup>8</sup> |
| PFD2015-102ME_           | 1.0                                  | 0.165                             | 380                              | 0.95                           | 0.065  | 0.85                  | 1.10        | 1.30        | 0.800                         | 1.13                        |
| PFD2015-122ME_           | 1.2                                  | 0.175                             | 310                              | 0.97                           | 0.071  | 0.80                  | 1.05        | 1.20        | 0.750                         | 1.06                        |
| PFD2015-182ME_           | 1.8                                  | 0.294                             | 265                              | 0.97                           | 0.110  | 0.70                  | 0.85        | 1.00        | 0.490                         | 0.690                       |
| PFD2015-272ME_           | 2.7                                  | 0.477                             | 220                              | 0.97                           | 0.162  | 0.65                  | 0.82        | 0.88        | 0.410                         | 0.580                       |
| PFD2015-332ME_           | 3.3                                  | 0.670                             | 180                              | 0.97                           | 0.200  | 0.57                  | 0.71        | 0.77        | 0.370                         | 0.525                       |
| PFD2015-472ME_           | 4.7                                  | 1.00                              | 160                              | 0.97                           | 0.285  | 0.44                  | 0.55        | 0.60        | 0.260                         | 0.370                       |
| PFD2015-682ME_           | 6.8                                  | 1.75                              | 130                              | 0.97                           | 0.415  | 0.37                  | 0.42        | 0.47        | 0.187                         | 0.265                       |
| PFD2015-822ME_           | 8.2                                  | 2.50                              | 125                              | 0.97                           | 0.500  | 0.35                  | 0.38        | 0.42        | 0.150                         | 0.210                       |
| PFD2015-103ME_           | 10                                   | 3.40                              | 110                              | 0.97                           | 0.590  | 0.30                  | 0.34        | 0.37        | 0.130                         | 0.185                       |

1. When ordering, please specify **packaging** code:

**PFD2015-103MEC**

**Packaging:** **C** = 7" machine-ready reel. EIA-481 embossed plastic tape (1000 parts per full reel).

**B** = Less than full reel. In tape, but not machine ready. To have a leader and trailer added (\$25 charge), use code letter D instead.

**D** = 13" machine-ready reel. EIA-481 embossed plastic tape. Factory order only, not stocked (3500 parts per full reel).

- Inductance shown for each winding, measured at 100 kHz, 0.1 Vrms, 0 Adc on an Agilent/HP 4284A LCR meter or equivalent. When leads are connected in parallel, inductance is the same value. When leads are connected in series, inductance is four times the value.
- DCR is for each winding. When leads are connected in parallel, DCR is half the value. When leads are connected in series, DCR is twice the value.
- SRF measured using an Agilent/HP8753 or equivalent. When leads are connected in parallel, SRF is the same value.
- Leakage inductance is for the primary winding with the secondary windings shorted.
- DC current, at which the inductance drops the specified amount from its value without current. It is the sum of the current flowing in both windings.
- Equal current when applied to each winding simultaneously that causes a 40°C temperature rise from 25°C ambient. See temperature rise calculation.
- Maximum current when applied to one winding that causes a 40°C temperature rise from 25°C ambient. See estimated temperature rise calculation.
- Electrical specifications at 25°C.

Refer to Doc 639 "Selecting Coupled Inductors for SEPIC Applications."

Refer to Doc 362 "Soldering Surface Mount Components" before soldering.

### Temperature rise estimate based on specified Irms

Winding power loss =  $(I_{L1}^2 + I_{L2}^2) \times \text{DCR}$  in Watts (W)

Temperature rise = Winding power loss  $\times \frac{275^\circ\text{C}}{\text{W}}$

### Examples for PFD2015-182ML:

#### Equal current in each winding (0.47 A):

Winding power loss =  $(0.47^2 + 0.47^2) \times 0.294 = 0.13 \text{ W}$

Temperature rise =  $0.13 \text{ W} \times \frac{275^\circ\text{C}}{\text{W}} = 35.8^\circ\text{C}$

#### Unequal current ( $I_{L1} = 0.60 \text{ A}$ , $I_{L2} = 0.25 \text{ A}$ ):

Winding power loss =  $(0.60^2 + 0.25^2) \times 0.294 = 0.124 \text{ W}$

Temperature rise =  $0.124 \text{ W} \times \frac{275^\circ\text{C}}{\text{W}} = 34.1^\circ\text{C}$

## PFD2015 Coupled Inductors for Flyback applications

| Part number <sup>1</sup> | Inductance<br>at 0 A <sup>2</sup><br>±20% (µH) | Inductance<br>at Ipk A <sup>3</sup><br>±20% (µH) | DCR<br>max<br>(Ohms) | Leakage<br>inductance <sup>4</sup><br>typ (µH) | Turns<br>ratio | Ipk <sup>3</sup><br>(A) |
|--------------------------|--|--|----------------------|--|----------------|-------------------------|
| PFD2015-102ME_           | 1.0  | 0.70   | 0.165                | 0.065  | 1 : 1          | 1.30                    |
| PFD2015-122ME_           | 1.2  | 0.84   | 0.175                | 0.071  | 1 : 1          | 1.20                    |
| PFD2015-182ME_           | 1.8  | 1.26   | 0.294                | 0.110  | 1 : 1          | 1.00                    |
| PFD2015-272ME_           | 2.7  | 1.89   | 0.477                | 0.162  | 1 : 1          | 0.88                    |
| PFD2015-332ME_           | 3.3  | 2.37   | 0.670                | 0.200  | 1 : 1          | 0.77                    |
| PFD2015-472ME_           | 4.7  | 3.29   | 1.00                 | 0.285  | 1 : 1          | 0.60                    |
| PFD2015-682ME_           | 6.8  | 1.76   | 1.75                 | 0.415  | 1 : 1          | 0.47                    |
| PFD2015-822ME_           | 8.2  | 5.74   | 2.50                 | 0.500  | 1 : 1          | 0.42                    |
| PFD2015-103ME_           | 10   | 7.00   | 3.33                 | 0.590  | 1 : 1          | 0.37                    |

1. When ordering, please specify **packaging** code:

**PFD2015-103MEC**

**Packaging:** **C** = 7" machine-ready reel. EIA-481 embossed plastic tape (1000 parts per full reel).

**B** = Less than full reel. In tape, but not machine ready. To have a leader and trailer added (\$25 charge), use code letter D instead.

**D** = 13" machine-ready reel. EIA-481 embossed plastic tape. Factory order only, not stocked (3500 parts per full reel).

2. Inductance is for the primary, measured at 100 kHz, 0.1 Vrms, 0 Adc on an Agilent/HP 4284A LCR meter or equivalent.

3. Peak primary current drawn at minimum input voltage.

4. Leakage inductance is for the primary winding with the secondary windings shorted.

5. Electrical specifications at 25°C.

Refer to Doc 362 "Soldering Surface Mount Components" before soldering.



www.coilcraft.com

**US** +1-847-639-6400 sales@coilcraft.com

**UK** +44-1236-730595 sales@coilcraft-europe.com

**Taiwan** +886-2-2264 3646 sales@coilcraft.com.tw

**China** +86-21-6218 8074 sales@coilcraft.com.cn

**Singapore** + 65-6484 8412 sales@coilcraft.com.sg

Document 1005F-2 Revised 03/29/12

© Coilcraft Inc. 2012

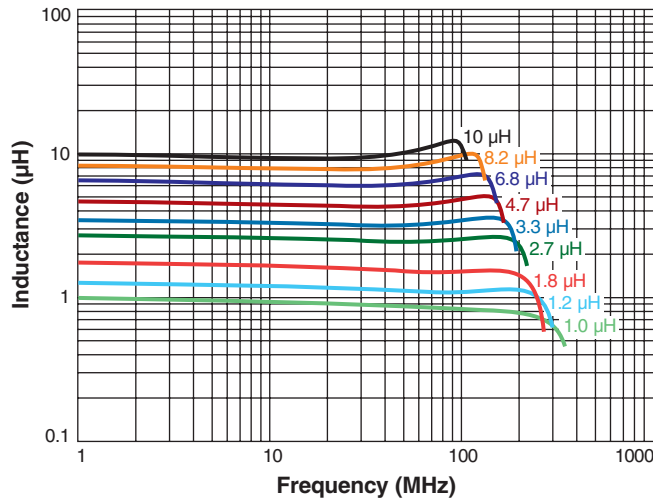
This product may not be used in medical or high risk applications without prior Coilcraft approval. Specification subject to change without notice. Please check out web site for latest information.

**NEW!**

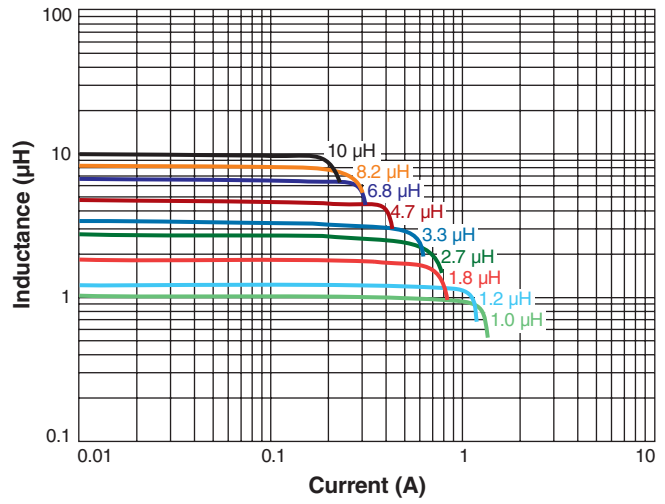


# PFD2015 Coupled Inductors for Flyback, SEPIC and other applications

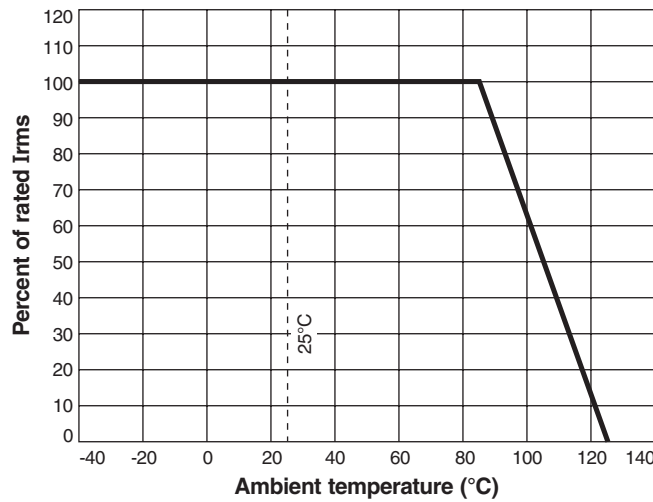
## L vs Frequency



## L vs Current



## Typical Current Derating



**US** +1-847-639-6400 sales@coilcraft.com  
**UK** +44-1236-730595 sales@coilcraft-europe.com  
**Taiwan** +886-2-2264 3646 sales@coilcraft.com.tw  
**China** +86-21-6218 8074 sales@coilcraft.com.cn  
**Singapore** + 65-6484 8412 sales@coilcraft.com.sg

Document 1005F-3 Revised 03/29/12  
 © Coilcraft Inc. 2012  
 This product may not be used in medical or high risk applications without prior Coilcraft approval. Specification subject to change without notice. Please check out web site for latest information.



Компания «ЭлектроПласт» предлагает заключение долгосрочных отношений при поставках импортных электронных компонентов на взаимовыгодных условиях!

Наши преимущества:

- Оперативные поставки широкого спектра электронных компонентов отечественного и импортного производства напрямую от производителей и с крупнейших мировых складов;
- Поставка более 17-ти миллионов наименований электронных компонентов;
- Поставка сложных, дефицитных, либо снятых с производства позиций;
- Оперативные сроки поставки под заказ (от 5 рабочих дней);
- Экспресс доставка в любую точку России;
- Техническая поддержка проекта, помощь в подборе аналогов, поставка прототипов;
- Система менеджмента качества сертифицирована по Международному стандарту ISO 9001;
- Лицензия ФСБ на осуществление работ с использованием сведений, составляющих государственную тайну;
- Поставка специализированных компонентов (Xilinx, Altera, Analog Devices, Intersil, Interpoint, Microsemi, Aeroflex, Peregrine, Syfer, Eurofarad, Texas Instrument, Miteq, Cobham, E2V, MA-COM, Hittite, Mini-Circuits, General Dynamics и др.);

Помимо этого, одним из направлений компании «ЭлектроПласт» является направление «Источники питания». Мы предлагаем Вам помощь Конструкторского отдела:

- Подбор оптимального решения, техническое обоснование при выборе компонента;
- Подбор аналогов;
- Консультации по применению компонента;
- Поставка образцов и прототипов;
- Техническая поддержка проекта;
- Защита от снятия компонента с производства.



#### Как с нами связаться

**Телефон:** 8 (812) 309 58 32 (многоканальный)

**Факс:** 8 (812) 320-02-42

**Электронная почта:** [org@eplast1.ru](mailto:org@eplast1.ru)

**Адрес:** 198099, г. Санкт-Петербург, ул. Калинина, дом 2, корпус 4, литера А.