

Type RL73 Series

Key Features

- Up to 2 Watts at 70°C
- Values down to R10
- 8 chip sizes
- Ideal for current detection
- Value marked on resistor
- Sizes 0201 to 2512
- 0402, 0603, 0805, 1206, 2512 stocked in distribution
- New Higher Power Version now available

Applications

- Audio
- Communications
- Automotive
- Low voltage power supplies
- Power management applications



TE Connectivity are pleased to offer this thick film chip resistor for current sensing positions. It has a special metal glaze resistive element and a nickel barrier layer beneath the solder to prolong terminal life. Following the developments by semiconductor manufacturers in the production of a range of IC's for battery charge management and low voltage power supplies, the RL73 Series satisfies the demand for a low ohmic shunt resistor to act as a current sensor.

Characteristics - Electrical - Standard Power

| Type | TCR | Power rating @ 70°C | Resistance Range | TDF | TD | TE | Tape |
|---------|---------|---------------------|------------------|------|------|------|-----------------------|
| RL73X1H | 1000PPM | 0.05W | R10 - R13 | 1000 | 5000 | -- | Paper tape |
| RL73V1H | 600PPM | 0.05W | R15 - R47 | 1000 | 5000 | -- | Paper tape |
| RL73N1H | 300PPM | 0.05W | R51 - R91 | 1000 | 5000 | -- | Paper tape |
| RL73N1E | 300PPM | 0.0625W | R10 - R91 | 1000 | 5000 | -- | Paper tape |
| RL73N1J | 300PPM | 0.1W | R10 - R91 | 1000 | 5000 | -- | Paper tape |
| RL73H2A | 100PPM | 0.125W | R10 - R91 | 1000 | 5000 | -- | Paper tape |
| RL73K2A | 200PPM | 0.125W | R10 - R91 | 1000 | 5000 | -- | Paper tape |
| RL73H2B | 100PPM | 0.25W | R10 - R91 | 1000 | 5000 | -- | Paper tape |
| RL73K2B | 200PPM | 0.25W | R10 - R91 | 1000 | 5000 | -- | Paper tape |
| RL73H2E | 100PPM | 0.5W | R10 - R91 | 1000 | 5000 | -- | Paper tape |
| RL73K2E | 200PPM | 0.5W | R10 - R91 | 1000 | 5000 | -- | Paper tape |
| RL73H2H | 100PPM | 0.75W | R10 - R91 | 1000 | -- | 4000 | Embossed plastic tape |
| RL73K2H | 200PPM | 0.75W | R10 - R91 | 1000 | -- | 4000 | Embossed plastic tape |
| RL73H3A | 100PPM | 1W | R10 - R91 | 1000 | -- | 4000 | Embossed plastic tape |
| RL73K3A | 200PPM | 1W | R10 - R91 | 1000 | -- | 4000 | Embossed plastic tape |

Type RL73 Series

Characteristics - Electrical - High power version

| Type | TCR | Power rating @ 70°C | Resistance Range | TDF | TD | TE | Tape |
|----------|--------|---------------------|------------------|------|------|------|---------|
| RLP73M1E | 400PPM | 0.125W | R051 - R10 | 1000 | 5000 | -- | Paper |
| RLP73N1E | 300PPM | 0.125W | R110 - R47 | 1000 | 5000 | -- | Paper |
| RLP73K1E | 200PPM | 0.125W | R51 - 1R0 | 1000 | 5000 | -- | Paper |
| RLP73M1J | 400PPM | 0.125W | R051 - R10 | 1000 | 5000 | -- | Paper |
| RLP73N1J | 300PPM | 0.125W | R110 - R47 | 1000 | 5000 | -- | Paper |
| RLP73K1J | 200PPM | 0.125W | R51 - 1R0 | 1000 | 5000 | -- | Paper |
| RLP73M2A | 400PPM | 0.25W | R051 - R10 | 1000 | 5000 | -- | Paper |
| RLP73N2A | 300PPM | 0.25W | R110 - R47 | 1000 | 5000 | -- | Paper |
| RLP73K2A | 200PPM | 0.25W | R51 - 1R0 | 1000 | 5000 | -- | Paper |
| RLP73V2B | 600PPM | 0.5W | R010 - R020 | 1000 | 5000 | -- | Paper |
| RLP73M2B | 400PPM | 0.5W | R022 - R047 | 1000 | 5000 | -- | Paper |
| RLP73N2B | 300PPM | 0.5W | R051 - R091 | 1000 | 5000 | -- | Paper |
| RLP73K2B | 200PPM | 0.5W | R10 - 1R0 | 1000 | 5000 | -- | Paper |
| RLP73V3A | 600PPM | 2W | R010 - R020 | 1000 | -- | 4000 | Plastic |
| RLP73M3A | 400PPM | 2W | R022 - R047 | 1000 | -- | 4000 | Plastic |
| RLP73N3A | 300PPM | 2W | R051 - R091 | 1000 | -- | 4000 | Plastic |
| RLP73K3A | 200PPM | 2W | R10 - 1R0 | 1000 | -- | 4000 | Plastic |

Operating Voltage= $\sqrt{P \cdot R}$; Overload Voltage= $2.5 \cdot \sqrt{P \cdot R}$; Operating Current= $\sqrt{P/R}$
 Maximum operating temperature -55°C to +155°C

Power Derating Curve



* Recommended Circuit Board Design

For resistors operated in ambient temperatures above 70°C, power rating must be derated in accordance with this curve.

Characteristics - Environmental

| Item | Requirement | Test Method |
|--|---|--|
| Temperature Coefficient of Resistance (TCR): | As Specification | -55°C ~ +125°C, 25°C is the reference temperature |
| Short Time Overload: | $\pm(0.5\%+0.05\Omega)$ for higher Power rating: $\pm(1.0\% + 0.05\Omega)$ | RCWV*2.5 or Max. overload voltage for 5 seconds |
| Insulation Resistance: | $\geq 10G$ | Max. overload voltage for 1 minute |
| Endurance: | $\pm(1.0\%+0.05\Omega)$ | 70 $\pm 2^\circ C$, Max. working voltage for 1000 hrs with 1.5 hrs "ON" and 0.5 hrs "OFF" |
| Damp Heat with Load: | $\pm(0.5\%+0.05\Omega)$ | 40 $\pm 2^\circ C$, 90-95% R.H. max. working voltage for 1000 hrs with 1.5 hrs "ON" and 0.5 hrs "OFF" |
| Dry Heat: | $\pm(0.5\%+0.05\Omega)$ | at +155°C for 1000 hrs |
| Bending Strength: | As Spec. | Bending once for 5 seconds 2010, 2512 sizes: 2mm Other sizes: 3mm |
| Solderability: | 95% min. coverage | 245 $\pm 5^\circ C$ for 3 seconds |
| Resistance to Soldering Heat: | $\pm(0.5\%+0.05\Omega)$ | 260 $\pm 5^\circ C$ for 10 seconds |
| Voltage Proof: | No breakdown or flashover | 1.42 times RCWV (RMS) for 1 minute |
| Leaching: | Individual leaching area $\leq 5\%$ Total leaching area $\leq 10\%$ | 260 $\pm 5^\circ C$ for 30 seconds |
| Thermal Shock: | $\pm(0.5\%+0.05\Omega)$ | -55°C to +155°C, 5 cycles |

Reference Standards: IEC 60115-1, 60068-2-58; JIS-C 5201-1

Storage Temperature: 25 $\pm 3^\circ C$; Humidity < 80%RH

Type RL73 Series

Dimensions



- | | | |
|--------------------------|----------------------------|--------------------------|
| 1. Alumina Substrate | 4. Edge Electrode (NiCr) | 7. Resistor Layer (NiCr) |
| 2. Bottom Electrode (Ag) | 5. Barrier Layer (Ni) | 8. Overcoat (Epoxy) |
| 3. Top Electrode (Ag-Pd) | 6. External Electrode (Sn) | 9. Marking |

| Part Number | L | W | C | D | t |
|----------------------|------------|------------|------------|------------|------------|
| RL73 1H (0201) | 0.58 ±0.05 | 0.29 ±0.05 | 0.15 ±0.05 | 0.12 ±0.05 | 0.23 ±0.05 |
| RL(P)73 1E (0402) | 1.00 ±0.05 | 0.50 ±0.05 | 0.20 ±0.10 | 0.25 ±0.10 | 0.32 ±0.10 |
| RL(P)73 1J (0603) | 1.60 ±0.10 | 0.80 ±0.10 | 0.30 ±0.20 | 0.30 ±0.20 | 0.45 ±0.10 |
| RL(P)73 2A (0805) | 2.00 ±0.15 | 1.25 ±0.15 | 0.40 ±0.25 | 0.30 ±0.20 | 0.55 ±0.10 |
| RL(P)73 2B (1206) | 3.10 ±0.10 | 1.55 ±0.15 | 0.40 ±0.25 | 0.50 ±0.30 | 0.55 ±0.10 |
| RL(P)73 2E (1210) | 3.10 ±0.10 | 2.50 ±0.15 | 0.50 ±0.25 | 0.50 ±0.30 | 0.55 ±0.10 |
| RL(P)73 2H (2010) | 5.00 ±0.20 | 2.50 ±0.15 | 0.50 ±0.25 | 0.60 ±0.30 | 0.60 ±0.15 |
| RL73 3A (2512) | 6.35 ±0.20 | 3.10 ±0.15 | 0.55 ±0.25 | 0.60 ±0.30 | 0.60 ±0.10 |
| RLP73 3A (2512) <R10 | 6.35 ±0.20 | 3.15 ±0.15 | 0.55 ±0.25 | 0.60 ±0.30 | 0.74 ±0.10 |
| RLP73 3A (2512) ≥R10 | 6.35 ±0.20 | 3.15 ±0.15 | 2.10 ±0.10 | 0.60 ±0.30 | 0.74 ±0.10 |

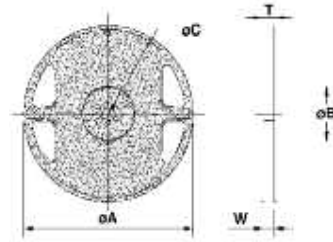
Recommend Land Pattern



| Type | A | B | C |
|----------------------|------|------|-----------|
| RL73 1H (0201) | 0.25 | 0.3 | 0.40 ±0.2 |
| RL(P)73 1E (0402) | 0.5 | 0.5 | 0.60 ±0.2 |
| RL(P)73 1J (0603) | 0.8 | 1.0 | 0.90 ±0.2 |
| RL(P)73 2A (0805) | 1.0 | 1.0 | 1.35 ±0.2 |
| RL(P)73 2B (1206) | 2.0 | 1.15 | 1.70 ±0.2 |
| RL(P)73 2E (1210) | 2.0 | 1.15 | 2.50 ±0.2 |
| RL(P)73 2H (2010) | 3.6 | 1.4 | 2.50 ±0.2 |
| RL73 3A (2512) | 4.9 | 1.6 | 3.10 ±0.2 |
| RLP73 3A (2512) <R10 | 4.9 | 1.6 | 3.10 ±0.2 |
| RLP73 3A (2512) ≥R10 | 1.0 | 3.55 | 3.10 ±0.2 |

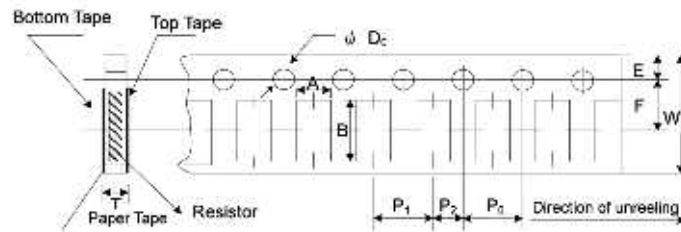
Type RL73 Series

Packaging Quantity & Reel Specifications



| Type | øA | øB | øC | W | T | Paper Tape | Embossed Plastic Tape |
|-------------------|------------|-----------|-----------|-----------|-----------|-------------|-----------------------|
| RL73 1H (0402) | 178.0 ±1.0 | 60.0 +1.0 | 13.5 ±0.7 | 9.5 ±0.1 | 11.5 ±1.0 | 1000 / 5000 | - |
| RL(P)73 1E (0402) | 178.0 ±1.0 | 60.0 +1.0 | 13.5 ±0.7 | 9.5 ±0.1 | 11.5 ±1.0 | 1000 / 5000 | - |
| RL(P)73 1J (0603) | 178.0 ±1.0 | 60.0 +1.0 | 13.5 ±0.7 | 9.5 ±0.1 | 11.5 ±1.0 | 1000 / 5000 | - |
| RL(P)73 2A (0805) | 178.0 ±1.0 | 60.0 +1.0 | 13.5 ±0.7 | 9.5 ±0.1 | 11.5 ±1.0 | 1000 / 5000 | - |
| RL(P)73 2B (1206) | 178.0 ±1.0 | 60.0 +1.0 | 13.5 ±0.7 | 9.5 ±0.1 | 11.5 ±1.0 | 1000 / 5000 | - |
| RL(P)73 2E (1210) | 178.0 ±1.0 | 60.0 +1.0 | 13.5 ±0.7 | 9.5 ±0.1 | 11.5 ±1.0 | 1000 / 5000 | - |
| RL(P)73 2H (2010) | 178.0 ±1.0 | 60.0 +1.0 | 13.5 ±0.7 | 13.5 ±1.0 | 15.5 ±1.0 | - | 1000 / 4000 |
| RL(P)73 3A (2512) | 178.0 ±1.0 | 60.0 +1.0 | 13.5 ±0.7 | 13.5 ±1.0 | 15.5 ±1.0 | - | 1000 / 4000 |

Paper Tape Specification



| Type | A | B | W | E | F | P ₀ | P ₁ | P ₂ | øD ₀ | T |
|------------|------------|------------|-----------|------------|------------|----------------|----------------|----------------|-----------------|------------|
| RL73 1H | 0.38 ±0.05 | 0.68 ±0.05 | 8.0 ±0.20 | 1.75 ±0.10 | 3.50 ±0.05 | 4.00 ±0.10 | 2.00 ±0.05 | 2.00 ±0.05 | 1.50+0.1,-0 | 0.42 ±0.20 |
| RL(P)73 1E | 0.65 ±0.10 | 1.15 ±0.10 | 8.0 ±0.20 | 1.75 ±0.10 | 3.50 ±0.05 | 4.00 ±0.10 | 2.00 ±0.05 | 2.00 ±0.05 | 1.50+0.1,-0 | 0.45 ±0.10 |
| RL(P)73 1J | 1.10 ±0.10 | 1.90 ±0.10 | 8.0 ±0.20 | 1.75 ±0.10 | 3.50 ±0.05 | 4.00 ±0.10 | 4.00 ±0.05 | 2.00 ±0.05 | 1.50+0.1,-0 | 0.70 ±0.10 |
| RL(P)73 2A | 1.60 ±0.10 | 2.40 ±0.20 | 8.0 ±0.20 | 1.75 ±0.10 | 3.50 ±0.05 | 4.00 ±0.10 | 4.00 ±0.05 | 2.00 ±0.05 | 1.50+0.1,-0 | 0.85 ±0.10 |
| RL(P)73 2B | 1.90 ±0.10 | 3.50 ±0.20 | 8.0 ±0.20 | 1.75 ±0.10 | 3.50 ±0.05 | 4.00 ±0.10 | 4.00 ±0.05 | 2.00 ±0.05 | 1.50+0.1,-0 | 0.85 ±0.10 |
| RL(P)73 2E | 2.90 ±0.10 | 3.50 ±0.20 | 8.0 ±0.20 | 1.75 ±0.10 | 3.50 ±0.05 | 4.00 ±0.10 | 4.00 ±0.05 | 2.00 ±0.05 | 1.50+0.1,-0 | 0.85 ±0.10 |

Type RL73 Series

Embossed Plastic Tape Specifications



| Type | A | B | W | E | F | P ₀ | P ₁ | P ₂ | øD ₀ | T |
|------------|-----------|-----------|-----------|-----------|----------|----------------|----------------|----------------|-----------------|-----------|
| RL(P)73 2H | 2.80±0.10 | 5.50±0.10 | 12.0±0.10 | 1.75±0.10 | 5.5±0.05 | 4.00±0.05 | 4.00±0.10 | 2.00±0.05 | 1.50+0.10 | 1.00±0.20 |
| RL73 3A | 3.50±0.10 | 6.70±0.10 | 12.0±0.10 | 1.75±0.10 | 5.5±0.05 | 4.00±0.05 | 4.00±0.10 | 2.00±0.05 | 1.50+0.10 | 1.00±0.20 |
| RLP73 3A | 3.38±0.10 | 6.68±0.10 | 12.0±0.30 | 1.75±0.10 | 5.5±0.01 | 4.00±0.10 | 4.00±0.10 | 2.00±0.05 | 1.50+0.05 | 1.45±0.20 |

How to Order

| RL73 | H | 2A | R10 | F | TD |
|---------------|--|--|--|------------------------|---|
| Common Part | TCR | Size | Resistor Value | Tolerance | Packaging |
| RL73 RLP73 | X - 1000PPM V - 600PPM N - 300PPM H - 100PPM K - 200PPM M - 400PPM See above for applicability | 1H -0201 1E -0402 1J -0603 2A -0805 2B -1206 2E -1210 2H -2010 3A -2512 | 0.1 Ohm (100milliOhm) R10 0.91 Ohm (910 milliOhm) R91 | F - ±1% J - ±5% | TDF -1000 REEL TD -5000 REEL TE -4000 REEL See above for applicability |

TE Connectivity, TE connectivity (logo) and TE (logo) are trademarks.
Other logos, product and Company names mentioned herein may be trademarks of their respective owners.

While TE has made every reasonable effort to ensure the accuracy of the information in this datasheet, TE does not guarantee that it is error-free, nor does TE make any other representation, warranty or guarantee that the information is accurate, correct, reliable or current. TE reserves the right to make any adjustments to the information contained herein at any time without notice. TE expressly disclaims all implied warranties regarding the information contained herein, including, but not limited to, any implied warranties of merchantability or fitness for a particular purpose. The dimensions in this datasheet are for reference purposes only and are subject to change without notice. Specifications are subject to change without notice. Consult TE for the latest dimensions and design specifications.



Компания «ЭлектроПласт» предлагает заключение долгосрочных отношений при поставках импортных электронных компонентов на взаимовыгодных условиях!

Наши преимущества:

- Оперативные поставки широкого спектра электронных компонентов отечественного и импортного производства напрямую от производителей и с крупнейших мировых складов;
- Поставка более 17-ти миллионов наименований электронных компонентов;
- Поставка сложных, дефицитных, либо снятых с производства позиций;
- Оперативные сроки поставки под заказ (от 5 рабочих дней);
- Экспресс доставка в любую точку России;
- Техническая поддержка проекта, помощь в подборе аналогов, поставка прототипов;
- Система менеджмента качества сертифицирована по Международному стандарту ISO 9001;
- Лицензия ФСБ на осуществление работ с использованием сведений, составляющих государственную тайну;
- Поставка специализированных компонентов (Xilinx, Altera, Analog Devices, Intersil, Interpoint, Microsemi, Aeroflex, Peregrine, Syfer, Eurofarad, Texas Instrument, Miteq, Cobham, E2V, MA-COM, Hittite, Mini-Circuits, General Dynamics и др.);

Помимо этого, одним из направлений компании «ЭлектроПласт» является направление «Источники питания». Мы предлагаем Вам помощь Конструкторского отдела:

- Подбор оптимального решения, техническое обоснование при выборе компонента;
- Подбор аналогов;
- Консультации по применению компонента;
- Поставка образцов и прототипов;
- Техническая поддержка проекта;
- Защита от снятия компонента с производства.



Как с нами связаться

Телефон: 8 (812) 309 58 32 (многоканальный)

Факс: 8 (812) 320-02-42

Электронная почта: org@eplast1.ru

Адрес: 198099, г. Санкт-Петербург, ул. Калинина, дом 2, корпус 4, литера А.