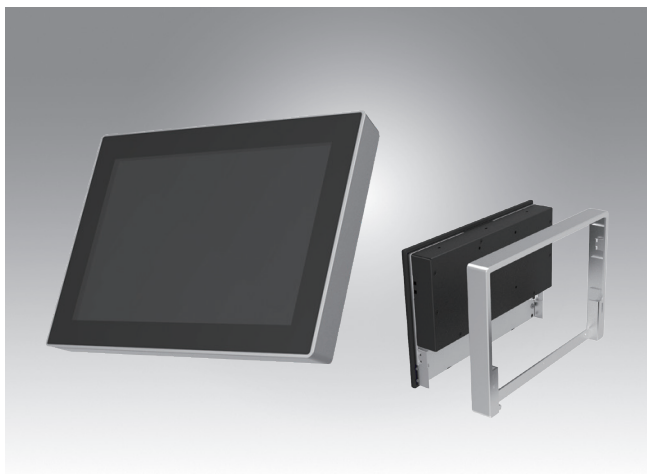


# UTC-510

**10.1" Ubiquitous Touch Computer**  
**UTC-510D with Intel® Atom® E3825 & Celeron® J1900**  
**UTC-510G with Intel® Celeron® N3350 & Pentium® N4200**



## Features

- Low Power & Fanless design
- Built-in Intel® Atom® E3825/Celeron® J1900 (UTC-510D)
- Built in Intel® Celeron® N3350/Pentium® N4200 (UTC-510G)
- Providing Natural Viewing Experience with 16:10 10.1" Display
- Landscape & Portrait screen mode support by different applications
- VESA 75 mm standard mounting holes for varied mounting demands
- Detachable plastic frame design for panel mount applications



## Introduction

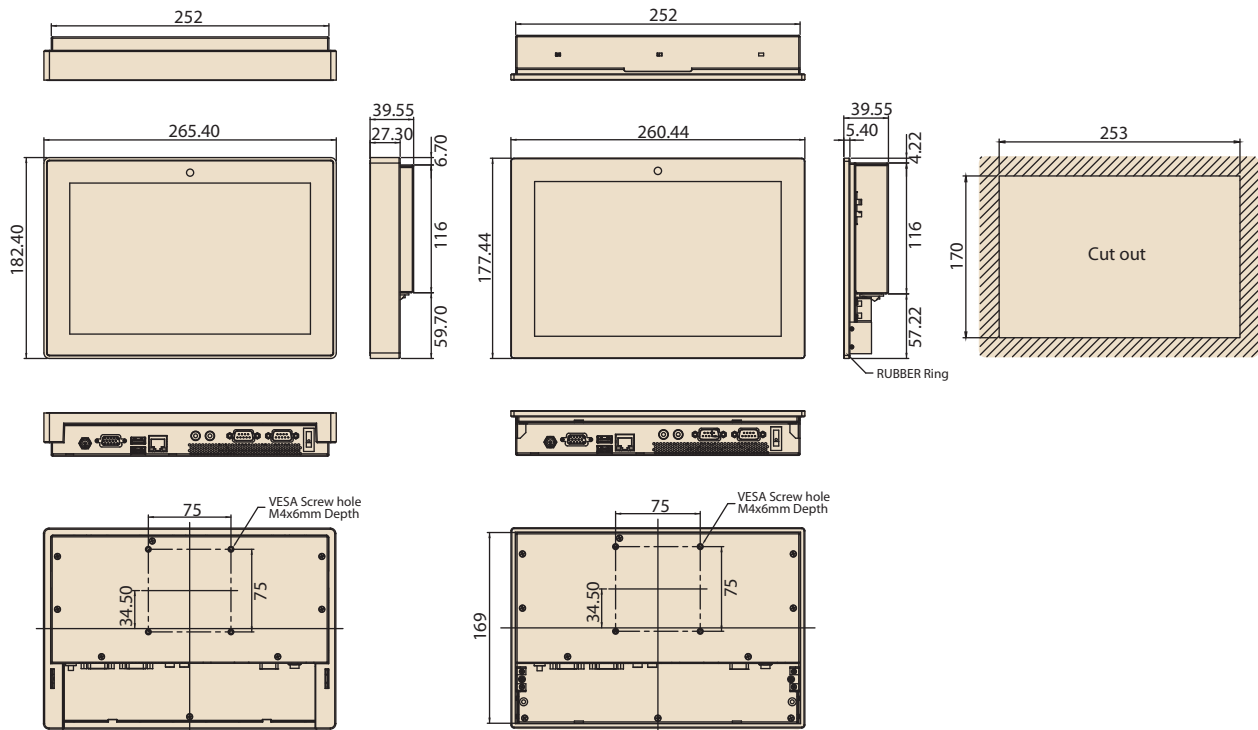
UTC-510 features an all-in-one computing system equipped with wide format, touch based LCD panel. It is easy to integrate key peripherals and display systems for diversified self-service and interactive signage deploy in different application areas. The systems deliver updated information with well-designed interactive interfaces, fully ensure relevant content and targeted promotions are delivered. UTC series touch panel computers are the best investments to enhance user satisfaction, further brand equity, and maximize business profits.

## Specifications

|                              |   |  |   |  |                                  |
|------------------------------|---|--|---|--|----------------------------------|
| Processor System             | CPU   | Intel® Atom® E3825 (UTC-510D)  | Intel® Celeron® J1900 (UTC-510D)              | Intel® Celeron® N3350 (UTC-510G)   | Intel® Pentium® N4200 (UTC-510G) |
|                              | Base Frequency  | 1.33 GHz (Dual-Core)   | 2 GHz (Quad-Core)                             | 1.10 GHz (Dual-Core)   | 1.10 GHz (Quad-Core)             |
|                              | Cache   | L2 Cache 1MB   | L2 Cache 2MB                                  | L2 Cache 2MB   | L2 Cache 2MB                     |
|                              | Memory  | 1 x 204 pin SO-DIMM DDR3L 1066 MHz up to 8 GB  | 1 x 204 pin SO-DIMM DDR3L 1333 MHz up to 8 GB | 1 x 204 pin SO-DIMM DDR3L 1866 MHz up to 8 GB  |                                  |
|                              | HDD   | 1 x 2.5 internal SATA HDD bay  |   |  |                                  |
|                              | Network (LAN)   | 1 x Gigabit Ethernet ports (Supports Wake on LAN)  |   |  |                                  |
|                              | I/O ports   | 2 x RS-232 COM (COM1 RS-422/485 supported)*<br>1 x USB 2.0 / 1 x USB 3.0 / 2 x USB 2.0 (optional)* |   | 2 x RS-232 COM (COM1 RS-422/485 supported)*<br>2 x USB 3.0 / 2 x USB 2.0 (optional)* |                                  |
|                              | Stereo Speaker  | 1 x Gigabit Ethernet (RJ-45)<br>1 x VGA<br>Audio Line-out x 1, Mic-in x 1                          |   | 1 x Gigabit Ethernet (RJ-45)<br>1 x VGA<br>Audio Line-out x 1, Mic-in x 1            |                                  |
|                              | Bus expansion   | 2 W x 1  |   | 1 Full size MiniPCle<br>1 Half size mSATA  |                                  |
|                              | Mounting  | VESA 75 x 75 mm  |   |  |                                  |
| Dimensions (W x H x D)       | 265.40 x 182.40 x 39.55 mm  |  |   |  |                                  |
| Weight                       | 1.80 kg (3.97 lbs)  |  |   |  |                                  |
| OS Support                   | WES7P 32/64bit<br>WES7E 32bit<br>Windows Pro Embedded 7 Pro 32/64bit<br>WES8 32bit<br>Windows Embedded 8.1 Industry Pro 64bit<br>Win 10 IoT Enterprise 64bit<br>Linux Ubuntu 16.04<br>Android 4.4 |  |   | Window 10 IoT Enterprise<br>Linux Ubuntu 16.04<br>Android 6.0                        |                                  |
| Front Panel Protection       | IP 65 Compliant   |  |   |  |                                  |
| Environmental Specifications | Operating Temperature   | 0 ~ 40° C (32 ~ 104° F)  | 0 ~ 35° C (32 ~ 95° F)                        | 0 ~ 45° C (32 ~ 113° F)  |                                  |
|                              | Relative Humidity   | 10 ~ 95% @ 40° C non-condensing  |   |  |                                  |
|                              | Vibration   | 1Grms  |   |  |                                  |
|                              | Shock   | 5G peak acceleration (11 msec. duration)   |   |  |                                  |
|                              | Certification   | CE, FCC, CB, UL, CCC, BSMI   |   |  |                                  |
| Power Supply                 | Input Rating  | 12 V/3 A (36W ITE Adapter)   |   |  |                                  |
|                              | Power consumption   | Typical 10W<br>Max. 20W  |   |  |                                  |
| LCD Display                  | Size/Type   | 10.1" TFT LCD with LED backlight   |   |  |                                  |
|                              | Max.Resolution  | 1280 x 800   |   |  |                                  |
|                              | Max. Color  | 16.7M  |   |  |                                  |
|                              | Pixel Pitch (um)  | 169.5 x 169.5  |   |  |                                  |
|                              | Brightness (cd/m <sup>2</sup> )   | 350  |   |  |                                  |
|                              | View Angle  | 170 / 170  |   |  |                                  |
| Touch Screen Option (PE/GE)  | Camera  | 5 Mega Pixel (Optional)  |   |  |                                  |
|                              | Type  | Projected Capacitive. Glass Panel  |   |  |                                  |
|                              | Light Transmission  | 80% ± 5% / 90%   |   |  |                                  |
| Controller                   | USB Interface / -   |  |   |  |                                  |

## Dimensions

Unit: mm



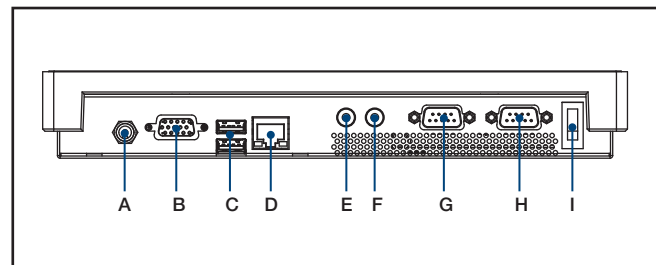
## Ordering Information

| Part No.        | Description   |
|-----------------|---|
| UTC-510DP-ATB0E | 10.1" Intel Atom E3825 Based fanless UTC with PCT.T/S 2GB RAM         |
| UTC-510DG-ATB0E | 10.1" Intel Atom E3825 Based fanless UTC with Glass 2GB RAM           |
| UTC-510DP-ATB1E | 10.1" Intel Celeron J1900 Based fanless UTC with PCT.T/S 2GB RAM      |
| UTC-510GP-ATB0E | 10.1" Intel Celeron N3350 Based fanless UTC with PCT.T/S 2GB RAM      |
| UTC-510GG-ATB0E | 10.1" Intel Celeron N3350 Based fanless UTC with Glass 2GB RAM        |
| UTC-510GP-ATB1E | 10.1" Intel Pentium N4200 Based fanless UTC with PCT.T/S 2GB RAM      |
| UTC-510GG-ATB1E | 10.1" Intel Pentium N4200 Based fanless UTC with Glass 2GB RAM        |
| UTC-510GP-ATN0E | 10.1" Intel Celeron N3350 Based fanless UTC with PCT.T/S 2GB RAM, Ant |
| UTC-510GP-ATN1E | 10.1" Intel Pentium N4200 Based fanless UTC with PCT.T/S 2GB RAM, Ant |
| 1700001524      | Power Cord 3P UL 10A 125V 180cm                                       |
| 170203180A      | Power Cord 3P UK 2.5A/3A 250V 1.83M                                   |
| 170203183C      | Power Cord 3P Europe (WS-010+WS-083)183cm                             |
| 1700021374-01   | Power Cord 3P CCC 2.5A 250V 250cm (IEC60320-C5)                       |
| 1960073820N001  | IO Cover UTC-510  |
| 1931031500      | Screws for IO Cover UTC-510(*2)                                       |

## Peripherals for UTC-510 series

| Part No.      | Description   |
|---------------|---|
| UTC-510P-F01E | Finger Print Reader For UTC-510 (USB connection)                  |
| UTC-510P-R01E | RFID Reader For UTC-510 (USB connection)                          |
| UTC-510P-B03E | 2D Barcode Scanner - Honeywell N3680 for UTC-510 (USB connection) |
| UTC-510P-M01E | Magnet Strip Reader For UTC-510 (USB connection)                  |
| UTC-510P-S01E | Smart Card Reader For UTC-510 (USB connection)                    |

## Fully- Integrated I/O



- A. DC Power jack
- B. VGA
- C. USB 3.0 X 1, USB 2.0 x 1 (for UTC-510D)  
USB 3.0 X 2 (for UTC-510G)
- D. LAN Ports
- E. MIC-in
- F. Line-out
- G. COM 2
- H. COM 1
- I. Power switch

## Installation Accessory

| Part No.         | Description                        |
|------------------|------------------------------------|
| UTC-WALL-MOUNT1E | Wall Mount kit for UTC-520/515/510 |
| UTC-WALL-MOUNT4E | UTC-510 VESA mount (75 x 75)       |
| UTC-S03-STANDE   | UTC 75*75 mm Desktop Stand         |
| UTC-510-STANDE   | UTC-510 desktop stand              |
| 1960074091N000   | UTC-510 Panel Mount Clamper (*4)   |
| 1930005598       | UTC-510 Panel Mount Screw (*4)     |



Компания «ЭлектроПласт» предлагает заключение долгосрочных отношений при поставках импортных электронных компонентов на взаимовыгодных условиях!

Наши преимущества:

- Оперативные поставки широкого спектра электронных компонентов отечественного и импортного производства напрямую от производителей и с крупнейших мировых складов;
- Поставка более 17-ти миллионов наименований электронных компонентов;
- Поставка сложных, дефицитных, либо снятых с производства позиций;
- Оперативные сроки поставки под заказ (от 5 рабочих дней);
- Экспресс доставка в любую точку России;
- Техническая поддержка проекта, помощь в подборе аналогов, поставка прототипов;
- Система менеджмента качества сертифицирована по Международному стандарту ISO 9001;
- Лицензия ФСБ на осуществление работ с использованием сведений, составляющих государственную тайну;
- Поставка специализированных компонентов (Xilinx, Altera, Analog Devices, Intersil, Interpoint, Microsemi, Aeroflex, Peregrine, Syfer, Eurofarad, Texas Instrument, Miteq, Cobham, E2V, MA-COM, Hittite, Mini-Circuits, General Dynamics и др.);

Помимо этого, одним из направлений компании «ЭлектроПласт» является направление «Источники питания». Мы предлагаем Вам помощь Конструкторского отдела:

- Подбор оптимального решения, техническое обоснование при выборе компонента;
- Подбор аналогов;
- Консультации по применению компонента;
- Поставка образцов и прототипов;
- Техническая поддержка проекта;
- Защита от снятия компонента с производства.



#### Как с нами связаться

**Телефон:** 8 (812) 309 58 32 (многоканальный)

**Факс:** 8 (812) 320-02-42

**Электронная почта:** [org@eplast1.ru](mailto:org@eplast1.ru)

**Адрес:** 198099, г. Санкт-Петербург, ул. Калинина, дом 2, корпус 4, литера А.