

# FP0705

## High frequency, high current power inductors



### Applications

- Multi-phase and Vcore regulators
- Voltage Regulator Modules (VRMs)
  - Server and desktop
  - Central processing unit (CPU)
  - Graphics processing unit (GPU)
  - Application specific integrated circuit (ASIC)
  - High power density
- Data networking and storage systems
- Graphics cards and battery power systems
- Portable electronics
- Point-of-Load modules

### Product description

- High current carrying capacity
- Low core loss
- Inductance Range from 72 nH to 220 nH
- Current range from 20 A to 65 A
- 7.0 mm x 7.0 mm footprint surface mount package in a 4.95 mm height
- Ferrite core material
- Halogen free, lead free, RoHS compliant

### Environmental data

- Storage temperature range (Component): -40 °C to +125 °C
- Operating temperature range: -40 °C to +125 °C (ambient plus self-temperature rise)
- Solder reflow temperature: J-STD-020D compliant



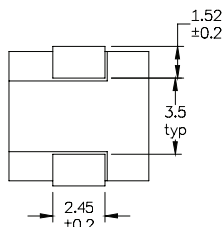
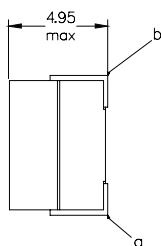
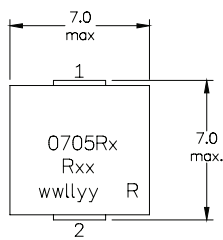
Product specifications

Part Number <sup>7</sup>	OCL <sup>1</sup> (nH) ±10%	FLL <sup>2</sup> (nH) minimum	I <sub>rms</sub> <sup>3</sup> (A)	I <sub>sat</sub> 1 <sup>4</sup> (A)	I <sub>sat</sub> 2 <sup>5</sup> (A)	DCR (mΩ) @ 20°C	K-factor <sup>6</sup>
<b>R1 version</b>							
FP0705R1-R07-R	72	51	43	65	50	0.25 ± 10%	826
FP0705R1-R10-R	105	78	43	44	34	0.25 ± 10%	826
FP0705R1-R12-R	120	86	43	37	30	0.25 ± 10%	826
FP0705R1-R15-R	150	108	43	30	24	0.25 ± 10%	826
FP0705R1-R18-R	180	130	43	25	20	0.25 ± 10%	826
FP0705R1-R22-R	226	159	43	20	16	0.25 ± 10%	826
<b>R2 version</b>							
FP0705R2-R07-R	72	51	38	65	50	0.32 ± 9.4%	826
FP0705R2-R10-R	105	78	38	44	34	0.32 ± 9.4%	826
FP0705R2-R12-R	120	86	38	37	30	0.32 ± 9.4%	826
FP0705R2-R15-R	150	108	38	30	24	0.32 ± 9.4%	826
FP0705R2-R18-R	180	130	38	25	20	0.32 ± 9.4%	826
FP0705R2-R22-R	226	159	38	20	16	0.32 ± 9.4%	826
<b>R3 version</b>							
FP0705R3-R07-R	72	51	32	65	50	0.46 ± 6.5%	826
FP0705R3-R10-R	105	78	32	44	34	0.46 ± 6.5%	826
FP0705R3-R12-R	120	86	32	37	30	0.46 ± 6.5%	826
FP0705R3-R15-R	150	108	32	30	24	0.46 ± 6.5%	826
FP0705R3-R18-R	180	130	32	25	20	0.46 ± 6.5%	826
FP0705R3-R22-R	226	159	32	20	16	0.46 ± 6.5%	826

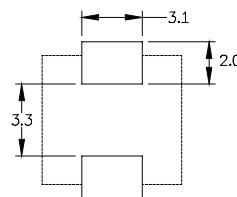
- Open Circuit Inductance (OCL) Test Parameters: 100 kHz, 0.1 Vrms, 0.0 Adc, +25 °C
- Full Load Inductance (FLL) Test Parameters: 100 kHz, 0.1 Vrms, I<sub>sat</sub>1, +25 °C
- I<sub>rms</sub>: DC current for an approximate temperature rise of 40 °C without core loss. Derating is necessary for AC currents. PCB layout, trace thickness and width, air-flow, and proximity of other heat generating components will affect the temperature rise. It is recommended that the temperature of the part not exceed 125 °C under worst case operating conditions verified in the end application.
- I<sub>sat</sub>1: Peak current for approximately 20% rolloff @ +25 °C
- I<sub>sat</sub>2: Peak current for approximately 20% rolloff @ +125 °C

- K-factor: Used to determine B<sub>pp</sub> for core loss (see graph).  
B<sub>pp</sub> = K \* L \* ΔI \* 10<sup>-3</sup>. B<sub>pp</sub> (Gauss), K: (K-factor from table),  
L: (Inductance in nH), ΔI (Peak to peak ripple current in Amps).
- Part Number Definition: FP0705Rx-Rxx-R  
FP0705= Product code and size  
Rx= Version indicator  
-Rxx= Inductance value in μH, R= decimal point  
-R suffix = RoHS compliant

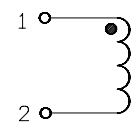
Dimensions (mm)



Recommended Pad Layout



Schematic



Part marking: 0705Rx (Rx = version indicator), Rxx = Inductance value in μH, R = decimal point, wwlllyy = date code, R = revision level

Tolerances are ±0.25 millimeters unless stated otherwise

PCB tolerances are ±0.1 millimeters unless stated otherwise

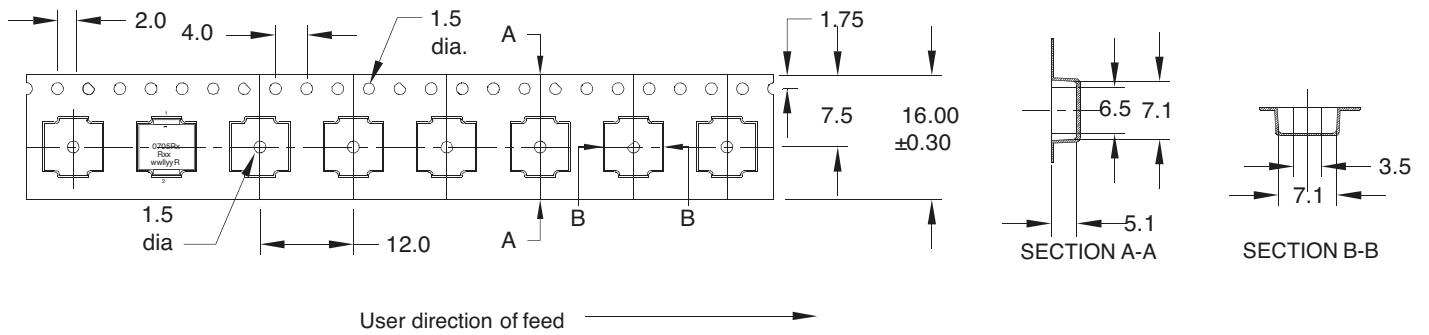
All soldering surface to be coplanar within 0.1016 millimeters

DCR measured between point "a" and point "b"

Do not route traces or vias underneath the inductor

**Packaging information (mm)**

Supplied in tape and reel packaging , 950 parts per 13" diameter reel



**Temperature rise vs. total loss**



Core loss vs.  $B_{p-p}$



Inductance characteristics



**Solder reflow profile**



**Table 1 - Standard SnPb Solder ( $T_c$ )**

Package Thickness	Volume $\text{mm}^3$ <350	Volume $\text{mm}^3$ $\geq$ 350
<2.5mm)	235°C	220°C
$\geq$ 2.5mm	220°C	220°C

**Table 2 - Lead (Pb) Free Solder ( $T_c$ )**

Package Thickness	Volume $\text{mm}^3$ <350	Volume $\text{mm}^3$ 350 - 2000	Volume $\text{mm}^3$ >2000
<1.6mm	260°C	260°C	260°C
1.6 – 2.5mm	260°C	250°C	245°C
>2.5mm	250°C	245°C	245°C

**Reference JDEC J-STD-020D**

Profile Feature	Standard SnPb Solder	Lead (Pb) Free Solder
Preheat and Soak		
• Temperature min. ( $T_{smin}$ )	100°C	150°C
• Temperature max. ( $T_{smax}$ )	150°C	200°C
• Time ( $T_{smin}$ to $T_{smax}$ ) ( $t_s$ )	60-120 Seconds	60-120 Seconds
Average ramp up rate $T_{smax}$ to $T_p$	3°C/ Second Max.	3°C/ Second Max.
Liquidous temperature ( $T_L$ )	183°C	217°C
Time at liquidous ( $t_L$ )	60-150 Seconds	60-150 Seconds
Peak package body temperature ( $T_p$ )*	Table 1	Table 2
Time ( $t_p$ )** within 5 °C of the specified classification temperature ( $T_c$ )	20 Seconds**	30 Seconds**
Average ramp-down rate ( $T_p$ to $T_{smax}$ )	6°C/ Second Max.	6°C/ Second Max.
Time 25°C to Peak Temperature	6 Minutes Max.	8 Minutes Max.

\* Tolerance for peak profile temperature ( $T_p$ ) is defined as a supplier minimum and a user maximum.  
 \*\* Tolerance for time at peak profile temperature ( $t_p$ ) is defined as a supplier minimum and a user maximum.

Life Support Policy: Eaton does not authorize the use of any of its products for use in life support devices or systems without the express written approval of an officer of the Company. Life support systems are devices which support or sustain life, and whose failure to perform, when properly used in accordance with instructions for use provided in the labeling, can be reasonably expected to result in significant injury to the user.

Eaton reserves the right, without notice, to change design or construction of any products and to discontinue or limit distribution of any products. Eaton also reserves the right to change or update, without notice, any technical information contained in this bulletin.

**Eaton**  
**Electronics Division**  
 1000 Eaton Boulevard  
 Cleveland, OH 44122  
 United States  
 www.eaton.com/elx

© 2016 Eaton  
 All Rights Reserved  
 Printed in USA  
 Publication No. 4325 BU-SB08210  
 January 2016



Eaton is a registered trademark.  
 All other trademarks are property of their respective owners.



Компания «ЭлектроПласт» предлагает заключение долгосрочных отношений при поставках импортных электронных компонентов на взаимовыгодных условиях!

Наши преимущества:

- Оперативные поставки широкого спектра электронных компонентов отечественного и импортного производства напрямую от производителей и с крупнейших мировых складов;
- Поставка более 17-ти миллионов наименований электронных компонентов;
- Поставка сложных, дефицитных, либо снятых с производства позиций;
- Оперативные сроки поставки под заказ (от 5 рабочих дней);
- Экспресс доставка в любую точку России;
- Техническая поддержка проекта, помощь в подборе аналогов, поставка прототипов;
- Система менеджмента качества сертифицирована по Международному стандарту ISO 9001;
- Лицензия ФСБ на осуществление работ с использованием сведений, составляющих государственную тайну;
- Поставка специализированных компонентов (Xilinx, Altera, Analog Devices, Intersil, Interpoint, Microsemi, Aeroflex, Peregrine, Syfer, Eurofarad, Texas Instrument, Miteq, Cobham, E2V, MA-COM, Hittite, Mini-Circuits, General Dynamics и др.);

Помимо этого, одним из направлений компании «ЭлектроПласт» является направление «Источники питания». Мы предлагаем Вам помощь Конструкторского отдела:

- Подбор оптимального решения, техническое обоснование при выборе компонента;
- Подбор аналогов;
- Консультации по применению компонента;
- Поставка образцов и прототипов;
- Техническая поддержка проекта;
- Защита от снятия компонента с производства.



#### Как с нами связаться

**Телефон:** 8 (812) 309 58 32 (многоканальный)

**Факс:** 8 (812) 320-02-42

**Электронная почта:** [org@eplast1.ru](mailto:org@eplast1.ru)

**Адрес:** 198099, г. Санкт-Петербург, ул. Калинина, дом 2, корпус 4, литера А.