

LTC2000, LTC2000A

16-, 14-, 11-Bit, 2.5Gsp/s to 2.7Gsp/s DACs

DESCRIPTION

Demonstration circuit 2303 supports the [LTC®2000](#) and [LTC2000A](#), a high speed, high dynamic range family of DACs. It was specially designed for applications that require differential DC coupled outputs. DC2303 supports the complete family of the LTC2000 including 16-, 14- and 11-bit parts. For all the variations see Table 1.

The DC2303 was designed to conform to the FMC form factor allowing this board to be used with standard FMC FPGA demo boards and mounted into FMC chassis.

The circuitry on the analog outputs is optimized for analog frequencies from DC-1.08GHz.

Design files for this circuit board are available at <http://www.linear.com/demo/DC2303>

LT, LT, LTC, LTM, Linear Technology and the Linear logo are registered trademarks of Linear Technology Corporation. All other trademarks are the property of their respective owners.

Table 1. DC2303 Variants

DC2303 VARIANTS	PART NUMBER	RESOLUTION	MAXIMUM SAMPLE RATE	OUTPUT FREQUENCY
DC2303A-A	LTC2000-16	16-Bit	2.5Gsp/s	DC-1000MHz
DC2303A-B	LTC2000-14	14-Bit	2.5Gsp/s	DC-1000MHz
DC2303A-C	LTC2000-11	11-Bit	2.5Gsp/s	DC-1000MHz
DC2303A-D	LTC2000A-16	16-Bit	2.7Gsp/s	DC-1080MHz
DC2303A-E	LTC2000A-14	14-Bit	2.7Gsp/s	DC-1080MHz
DC2303A-F	LTC2000A-11	11-Bit	2.7Gsp/s	DC-1080MHz

PERFORMANCE SUMMARY Specifications are at T_A = 25°C

PARAMETER	CONDITIONS	MIN	TYP	MAX	UNITS
Supply Voltage – DC2303	This supply must provide up to 800mA	4.8	5.0	5.2	V
Sampling Frequency (Sample Clock Frequency)		300		2500 or 2700	MHz
Sample Clock Level (Single-Ended)	Use a 50Ω Source	0		15	dBm
LVDS Inputs	Differential Input Voltage Range	±0.2		±0.6	V
	Common Mode Voltage Range	0.4		1.8	V

QUICK START PROCEDURE

DC2303 is easy to set up to evaluate the performance of the LTC2000. Refer to Figure 1 for proper measurement equipment setup and follow the procedure below.

Setup

The Xilinx KC705 development kit and a DC2159 was supplied with the DC2303 demonstration circuit. If these boards were not provided, follow the KC705 demo manual to install the required software and for connecting the KC705 board to the DC2303 and DC2159 and to a PC.

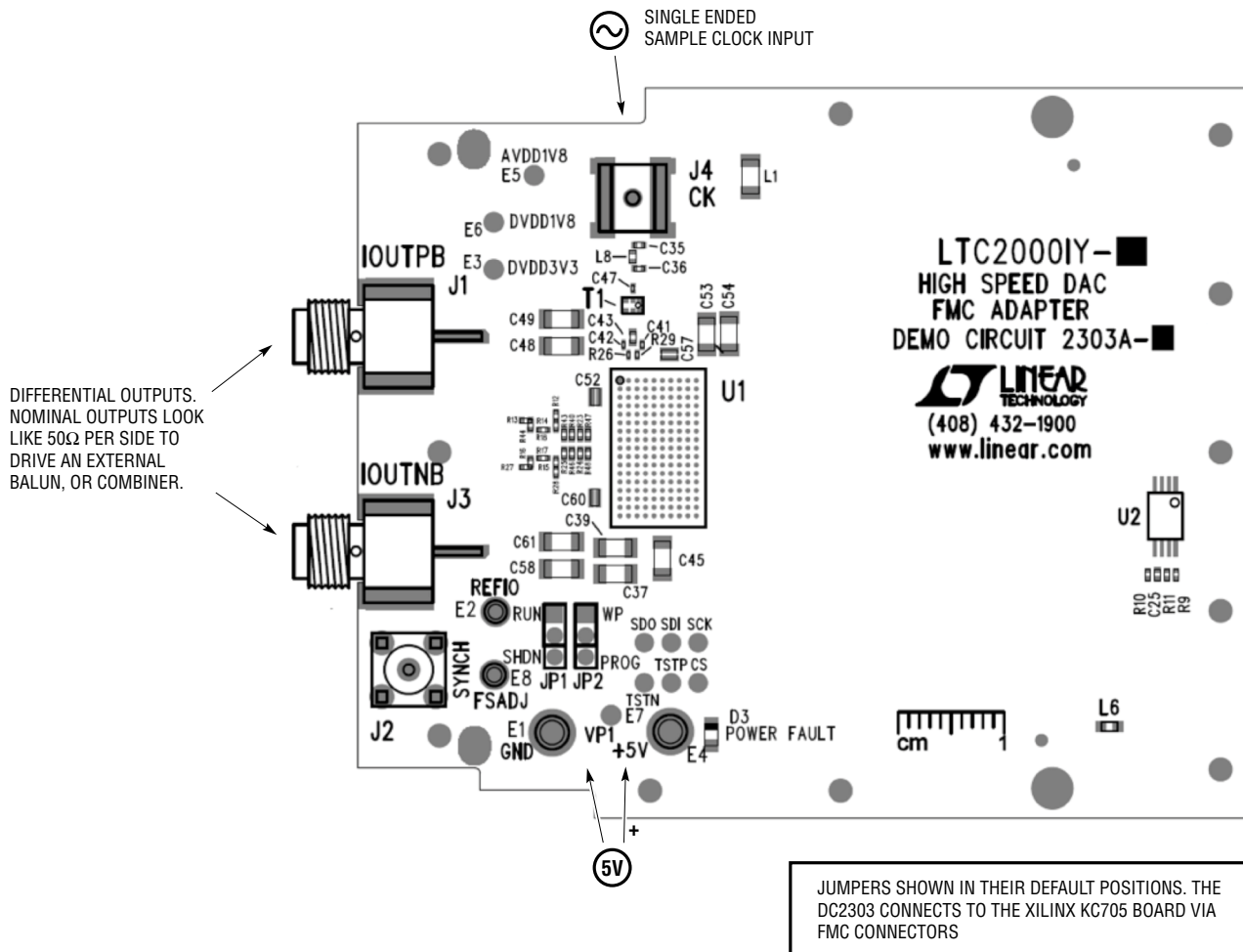


Figure 1. DC2303 Setup (Zoom for Details)

QUICK START PROCEDURE

HARDWARE SETUP

SMAs

J4: Sample Clock Input. Apply a clock signal to this SMA connector from a 50 Ω driver. A 0dBm clock source should be sufficient, but for best phase noise and jitter performance, use the highest possible amplitude and slew rate, up to 15dBm.

J1, J3: Differential Output Signals. These SMAs provide access to the differential outputs of the DAC. The output impedance is designed to be 50 Ω at each SMA, or 100 Ω differential. Connect an external balun or combiner to these pins to drive a single-ended spectrum analyzer. Linear Technology has various adaptor boards for specific frequencies and applications. More information is available at www.linear.com/LTC2000#demoboards.

J2: SYNCH. This SMA is to provide access to the sync pin of the LT8614. It is not used in normal use.

Turrets

5V (E4): Positive Input Voltage for the DAC and Digital Circuits. This voltage feeds a series of regulators that supply the proper voltages for the DAC. The voltage range for this turret is 4.8V to 5.2V. Note: For close-in phase noise plots, driving this voltage is not ideal. There is a known 20kHz noise hump in the spectrum that is generated by the regulators. For the best phase noise performance, back drive the onboard regulators with the provided turrets from a low noise supply.

GND (E1): Ground Connection. This demo board has only a single ground plane. This turret should be tied to the GND terminal of the power supply being used.

FSADJ (E8): This is an optional pin that is tied directly to the FSADJ pin of the DAC. It can be used to set the full-scale output current of the DAC. In normal operation this pin is tied to GND through 500 Ω to set a current of 40mA at the output. See data sheet for equations to set different current levels, then replace R45 on the backside of the board.

REFIO (E2): This pin is tied directly to the REFIO pin of the DAC and is used to set the reference voltage for the DAC. Normally it is internally set to 1.25V but can be overdriven with an external voltage from 1.1V to 1.4V.

TEST POINTS

AVDD1V8 (E5): Optional 1.8V Input. This pin is connected directly to the AVDD18 pin of the DAC. It requires a supply that can deliver up to 1A. Driving this pin will override the onboard regulator.

DVDD3V3 (E3): Optional 3.3V Input. This pin is connected directly to the DVDD33, AVDD33 and SVDD pins of the DAC. It requires a supply that can deliver up to 50mA. Driving this pin will override the onboard regulator.

DVDD1V8 (E6): Optional 1.8V Input. This pin is connected directly to the DVDD18 pin of the DAC. It requires a supply that can deliver up to 500mA. Driving this pin will override the onboard regulator.

VP1 (E7): This is a test point that is at the output of the onboard switching regulator. It is meant for test purposes. It can also be driven to 2.5V to shut down the output of the switching regulator.

TSTP, TSTN: These pins are tied directly to the TSTP and TSTN pins of the DAC. They can be used to measure the internal temperature and timing of the LVDS inputs.

CS: Chip Select. This pin connects directly to the \overline{CS} pin of the LTC2000.

SCK: Serial Clock. This pin connects directly to the SCK pin of the LTC2000.

SDI: Serial Data Input. This pin connects directly to the SDI pin of the LTC2000.

SDO: Serial Data Output. This pin connects directly to the SDO pin of the LTC2000.

QUICK START PROCEDURE

Jumpers

The DC2303 demonstration circuit should have the following jumper settings as default positions.

JP1: In the RUN position this pin results in normal operation of the DAC. In the SHDN position the DAC is powered down. (Default: RUN or up)

JP2: EEPROM Write Protect. For factory use only. Should be left in the protected (WP) position.

Connectors

P1: FMC Connector. This connector is designed to connect to the Xilinx KC705 board or any other FMC compatible FPGA board. All of the communication between the FPGA and the DAC is routed through this connector.

APPLYING POWER AND SIGNALS TO THE DC2303 DEMONSTRATION CIRCUIT

If a KC705 demo board is used to supply data to the DC2303, the two boards should first be bolted together for a proper electrical connection.

If Linear Technology provided the KC705 board the proper FPGA programming file (bit file) is already installed in flash memory and will begin to operate when the board is powered on. A DC2159 was also provided for a USB connection between the LTDACGen software and the FPGA. If an unprogrammed FPGA board is used, refer to the appropriate documentation on how to program it.

Power should be applied to the system in this order:

1. Connect the DC2303 to the KC705 board on HPC FMC connector, J22. Connect the DC2159 demo board into the LPC FMC connector, J2.
2. Connect the USB cable to J3 of the provided DC2159.
3. Apply a clock to J4 of the DC2303.
4. Connect any optional output board, like the DC2266, to J1 and J3.
5. Connect the 5V from a bench supply to the 5V turret on the DC2303.

QUICK START PROCEDURE

6. Turn on the voltage to the KC705.
7. Open the LTDACGen software and hit connect.

LTDACGen should report back that it is connected to the FPGA. See Figure 2.

ANALOG OUTPUT NETWORK

The analog output network of the DC2303 has been designed to maximize the performance of the LTC2000. The LTC2000 drives two 50Ω resistors on each side to minimize the impedance it sees. This maximizes the SFDR the DAC is able to produce. If a larger signal swing is required this impedance can be increased, but the SFDR might degrade. The output also has a pi network of 50Ω resistors to pad the output impedance of the board up to

50Ω per side. This allows the demo board to drive a 50Ω analyzer through a balun or other combiner.

Linear Technology has various adaptor boards for specific frequencies and applications. More information is available at <http://www.linear.com/product/LTC2000#demoboards>.

SAMPLE CLOCK

The sample clock to the DC2303 demonstration circuit board is marked J4. As a default it is a single-ended 50Ω input port. There is an onboard balun that does a single-ended to differential translation.

For the best noise performance, the sample input must be driven with a very low jitter signal generator source. The amplitude should be as large as possible up to ±3.6V or 15dBm.

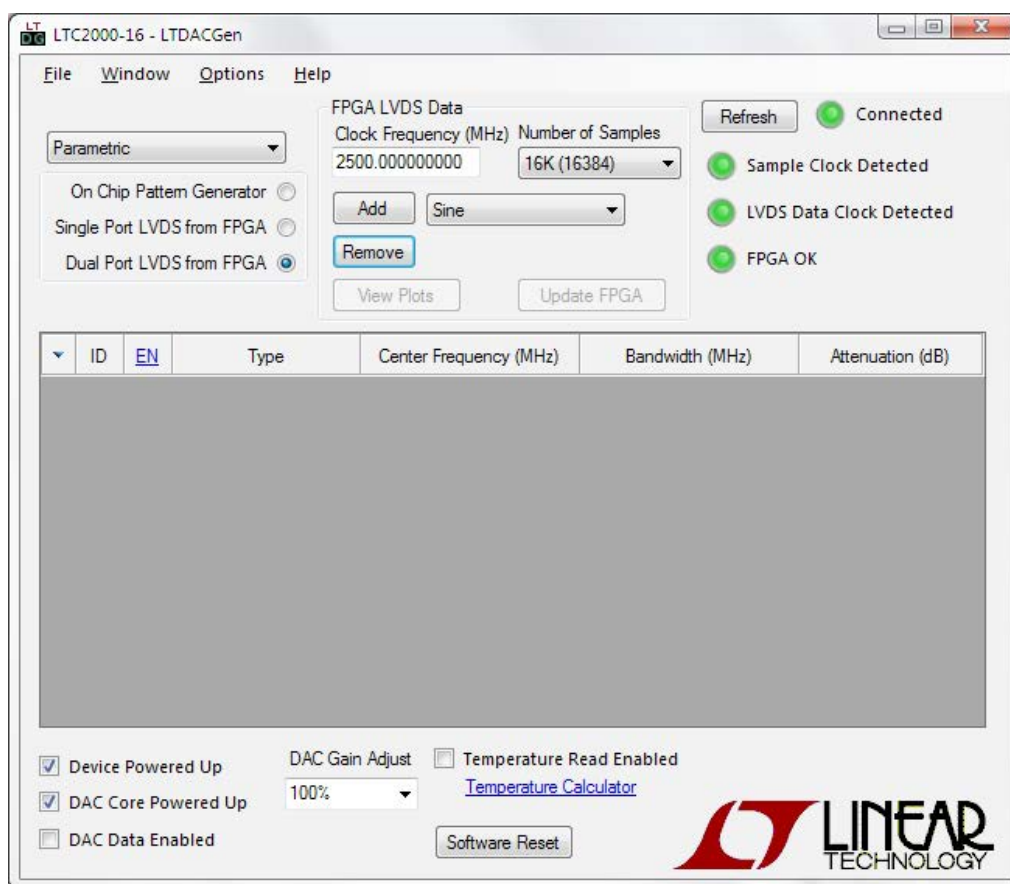


Figure 2. LTDACGen Connected to FPGA

QUICK START PROCEDURE

POWER

There are several options for powering the DC2303 demo board. The preferred option is to apply 5V from a bench supply to the 5V turret on the demo board. This voltage feeds a series of regulators that supply the proper voltages for the DAC. The voltage range for this turret is 4.8V to 5.2V. For applications that are sensitive to close in phase noise, driving this voltage is not ideal. There is a known 20kHz noise hump in the spectrum that is generated by the regulators. For the best phase noise performance, back drive the onboard regulators with the provided turrets from a low noise supply. The DC2303 demo board can also be powered from the 12V supply on the FMC connector. By populating L6 the 12V power supply from the FPGA board will be used instead of an external supply.

SOFTWARE

The software for the DC2303, LTDACGen is available at <http://www.linear.com/designtools/software/#DAC> free of charge. It simplifies the creation of complex waveforms and loading them into the FPGA to test the DC2303. For more information about how to use the LTDACGen software, refer to the help files that come with the software.

RESULTS

After everything is set up and the software is connected to the DAC demo system, a sine wave can be added to the output waveform. The default frequency is 399.932861328MHz (Figure 3). By clicking Update FPGA, the data is sent to the FPGA and is then used to program the DAC. A spectrum analyzer can then be used to view the results (Figure 4).

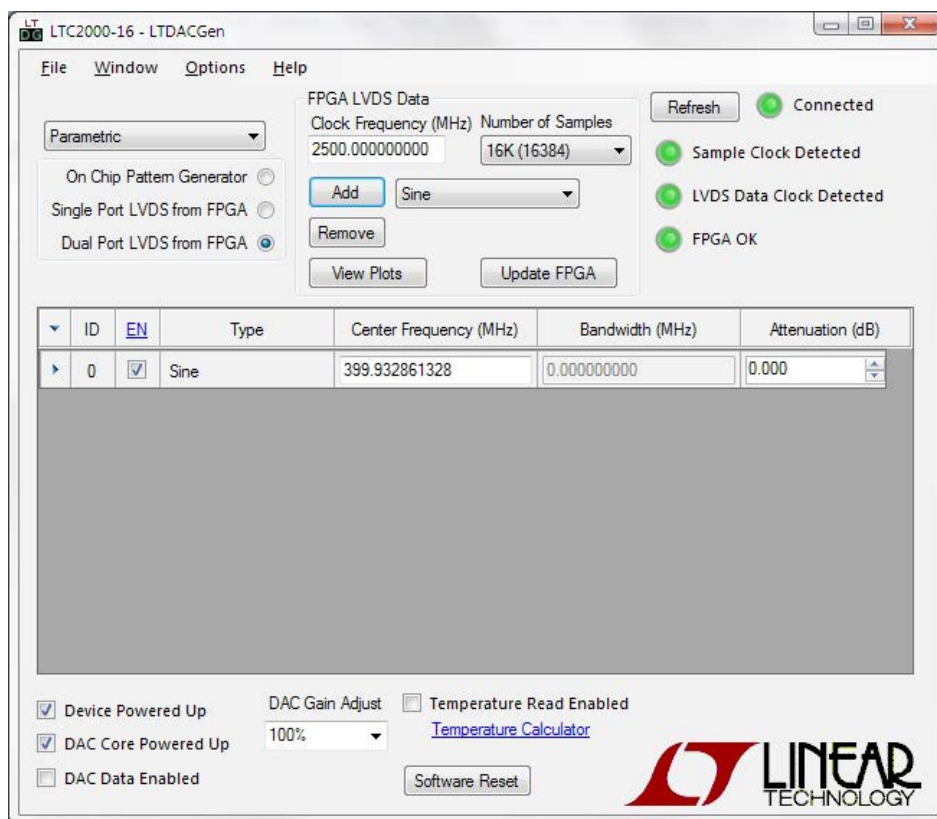
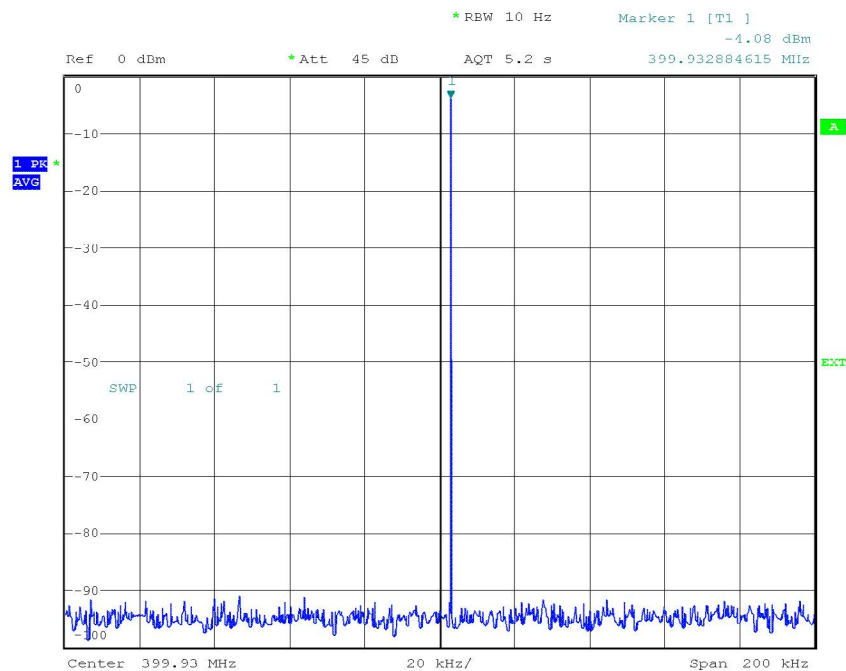
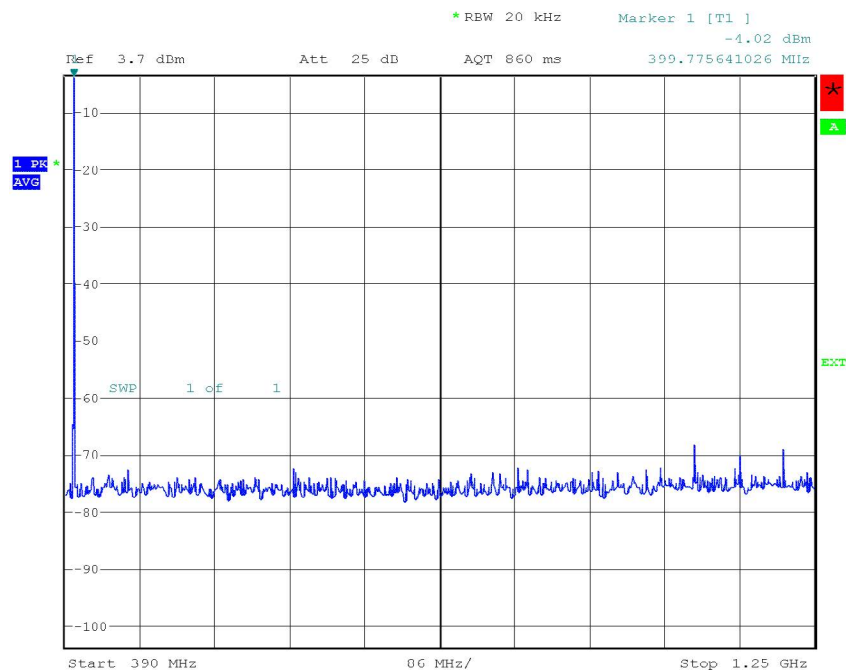


Figure 3. Default Frequency

QUICK START PROCEDURE



Date: 17.JUN.2014 19:12:15



Date: 17.JUN.2014 19:16:31

Figure 4. DC2303 Results. Close-In (Top) and Wideband (Bottom)

DEMO MANUAL DC2303

DEMONSTRATION BOARD IMPORTANT NOTICE

Linear Technology Corporation (LTC) provides the enclosed product(s) under the following **AS IS** conditions:

This demonstration board (DEMO BOARD) kit being sold or provided by Linear Technology is intended for use for **ENGINEERING DEVELOPMENT OR EVALUATION PURPOSES ONLY** and is not provided by LTC for commercial use. As such, the DEMO BOARD herein may not be complete in terms of required design-, marketing-, and/or manufacturing-related protective considerations, including but not limited to product safety measures typically found in finished commercial goods. As a prototype, this product does not fall within the scope of the European Union directive on electromagnetic compatibility and therefore may or may not meet the technical requirements of the directive, or other regulations.

If this evaluation kit does not meet the specifications recited in the DEMO BOARD manual the kit may be returned within 30 days from the date of delivery for a full refund. **THE FOREGOING WARRANTY IS THE EXCLUSIVE WARRANTY MADE BY THE SELLER TO BUYER AND IS IN LIEU OF ALL OTHER WARRANTIES, EXPRESSED, IMPLIED, OR STATUTORY, INCLUDING ANY WARRANTY OF MERCHANTABILITY OR FITNESS FOR ANY PARTICULAR PURPOSE. EXCEPT TO THE EXTENT OF THIS INDEMNITY, NEITHER PARTY SHALL BE LIABLE TO THE OTHER FOR ANY INDIRECT, SPECIAL, INCIDENTAL, OR CONSEQUENTIAL DAMAGES.**

The user assumes all responsibility and liability for proper and safe handling of the goods. Further, the user releases LTC from all claims arising from the handling or use of the goods. Due to the open construction of the product, it is the user's responsibility to take any and all appropriate precautions with regard to electrostatic discharge. Also be aware that the products herein may not be regulatory compliant or agency certified (FCC, UL, CE, etc.).

No License is granted under any patent right or other intellectual property whatsoever. **LTC assumes no liability for applications assistance, customer product design, software performance, or infringement of patents or any other intellectual property rights of any kind.**

LTC currently services a variety of customers for products around the world, and therefore this transaction **is not exclusive**.

Please read the DEMO BOARD manual prior to handling the product. Persons handling this product must have electronics training and observe good laboratory practice standards. **Common sense is encouraged.**

This notice contains important safety information about temperatures and voltages. For further safety concerns, please contact a LTC application engineer.

Mailing Address:

Linear Technology
1630 McCarthy Blvd.
Milpitas, CA 95035

Copyright © 2004, Linear Technology Corporation



Компания «ЭлектроПласт» предлагает заключение долгосрочных отношений при поставках импортных электронных компонентов на взаимовыгодных условиях!

Наши преимущества:

- Оперативные поставки широкого спектра электронных компонентов отечественного и импортного производства напрямую от производителей и с крупнейших мировых складов;
- Поставка более 17-ти миллионов наименований электронных компонентов;
- Поставка сложных, дефицитных, либо снятых с производства позиций;
- Оперативные сроки поставки под заказ (от 5 рабочих дней);
- Экспресс доставка в любую точку России;
- Техническая поддержка проекта, помощь в подборе аналогов, поставка прототипов;
- Система менеджмента качества сертифицирована по Международному стандарту ISO 9001;
- Лицензия ФСБ на осуществление работ с использованием сведений, составляющих государственную тайну;
- Поставка специализированных компонентов (Xilinx, Altera, Analog Devices, Intersil, Interpoint, Microsemi, Aeroflex, Peregrine, Syfer, Eurofarad, Texas Instrument, Miteq, Cobham, E2V, MA-COM, Hittite, Mini-Circuits, General Dynamics и др.);

Помимо этого, одним из направлений компании «ЭлектроПласт» является направление «Источники питания». Мы предлагаем Вам помощь Конструкторского отдела:

- Подбор оптимального решения, техническое обоснование при выборе компонента;
- Подбор аналогов;
- Консультации по применению компонента;
- Поставка образцов и прототипов;
- Техническая поддержка проекта;
- Защита от снятия компонента с производства.



Как с нами связаться

Телефон: 8 (812) 309 58 32 (многоканальный)

Факс: 8 (812) 320-02-42

Электронная почта: org@eplast1.ru

Адрес: 198099, г. Санкт-Петербург, ул. Калинина, дом 2, корпус 4, литера А.