



FEATURES

- 1mVp-p MAXIMUM OUTPUT NOISE
- 5W RATED OUTPUT POWER
- SHORT-CIRCUIT PROTECTION
- SIX-SIDED SHIELDING
- INTERNAL INPUT AND OUTPUT FILTERING
- FULLY REGULATED

APPLICATIONS

- HIGH RESOLUTION DATA ACQUISITION
- PRECISION TEST EQUIPMENT
- HIGH GAIN AMPLIFIERS
- PRECISION INSTRUMENTATION

DESCRIPTION

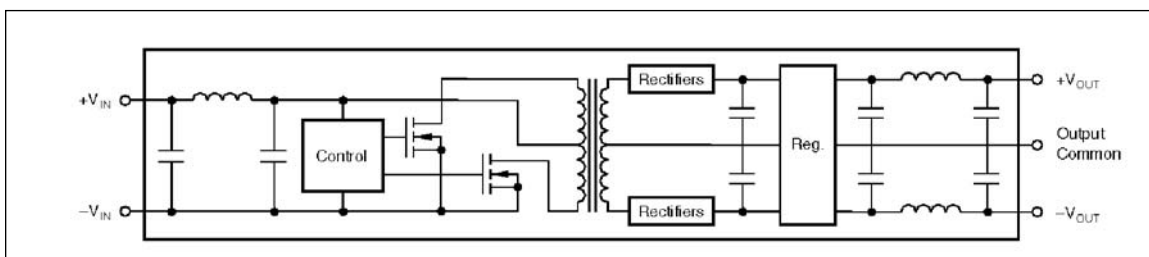
The PWR1546A has a maximum of 1mVp-p output noise. This unit incorporates input and output filtering along with an internal shield, giving full six-sided shielding that keeps unwanted radiated noise from your circuit. No external parts are required to meet the 1mVp-p maximum guaranteed output noise.

The PWR1546A is a miniature DC/DC converter providing dual isolated $\pm 15\text{Vdc}$ outputs from a single $+5\text{Vdc}$ input. Each output will supply

full-rated current over the entire specification range. Each output is regulated and is protected against all shorts. The isolation barrier is guaranteed to be 750Vdc.

Surface-mounted components and thermal encapsulant allow superior reliability and excellent thermal dissipation. The calculated MTTF (per MIL-HDBK-217 Rev. E, Circuit-Stress Analysis Method) is in excess of 100 years at 25°C.

SIMPLIFIED CIRCUIT DIAGRAM



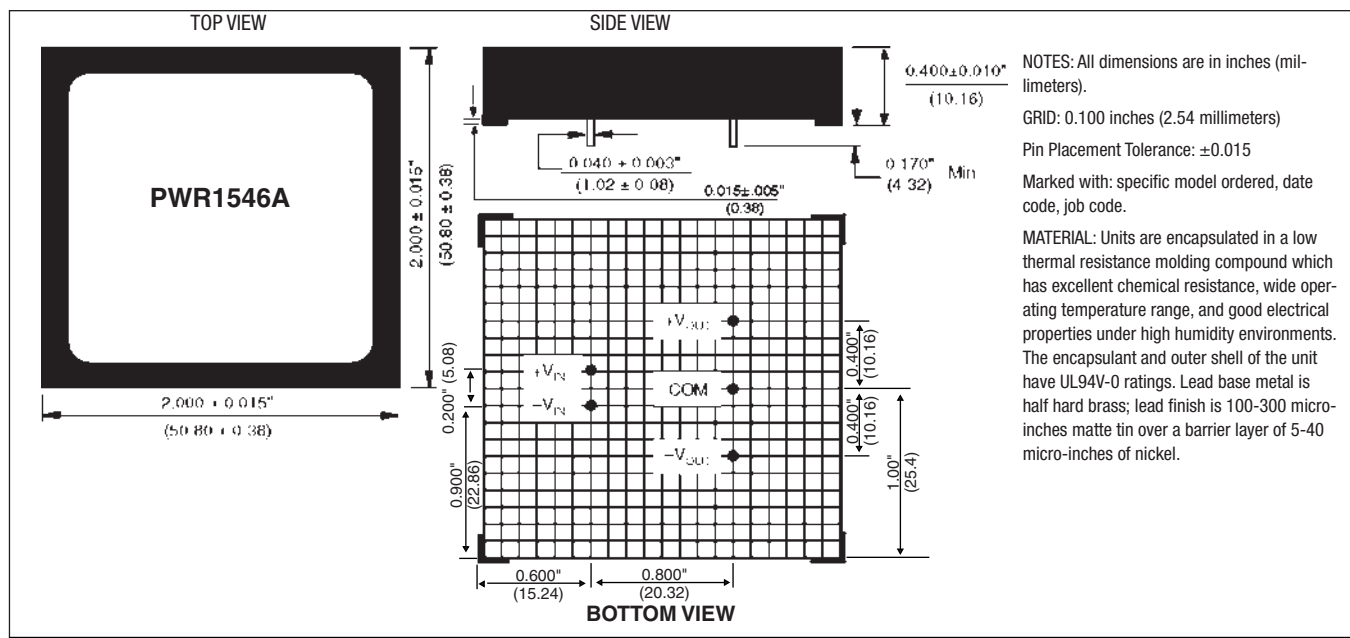
COMMON SPECIFICATIONS

Specifications typical at T_A = +25°C, rated input voltage, rated output current unless otherwise noted.

PARAMETER	CONDITIONS	MIN	TYP	MAX	UNITS
INPUT					
Rated Voltage			5.0		V _{DC}
Voltage Range		4.5		5.5	V _{DC}
Current	I _{LOAD} = 0		80		mA
	I _{LOAD} = Rated Output		1650		mA
Reflected Ripple Current	BW = DC to 10MHz		18		mAp-p
ISOLATION					
Rated Voltage		750			V _{DC}
Test Voltage	60 Hz, 10 seconds	750			V _{pk}
Resistance			10		GΩ
Capacitance			110		pF
Leakage Current	V _{ISO} = 240VAC, 60HZ			15	μArms
OUTPUT					
Rated Voltage			±15		V _{DC}
Voltage Setpoint Accuracy	Rated Load, Nominal V _{IN}			±1	%
Voltage Balance				±0.5	%
Temperature Coefficient			±0.01		%/°C
Rated Current			±167		mA
Transient Recovery Time	To 0.1% of Final Value		10		ms
REGULATION					
Line	4.5V _{DC} to 5.5V _{DC}		±0.02		%
Load	0mA to ±167mA		0.1		%
OUTPUT NOISE					
Ripple and Noise	BW = DC to 10MHz		0.6	1.0	mVp-p
GENERAL					
Efficiency			60		%
Package Weight			50		g
Switching Frequency			50		kHz
MTTF per MIL-HDBK-217, Rev E	Circuit Stress Method, T _A = +25°C		890		kHr
TEMPERATURE					
Specification		-25	+25	+85	°C
Operating		-40		+100	°C
Storage		-55		+125	°C

NOTE: Other input and output voltages may be available upon request. Please consult factory.

MECHANICAL



ABSOLUTE MAXIMUM RATINGS

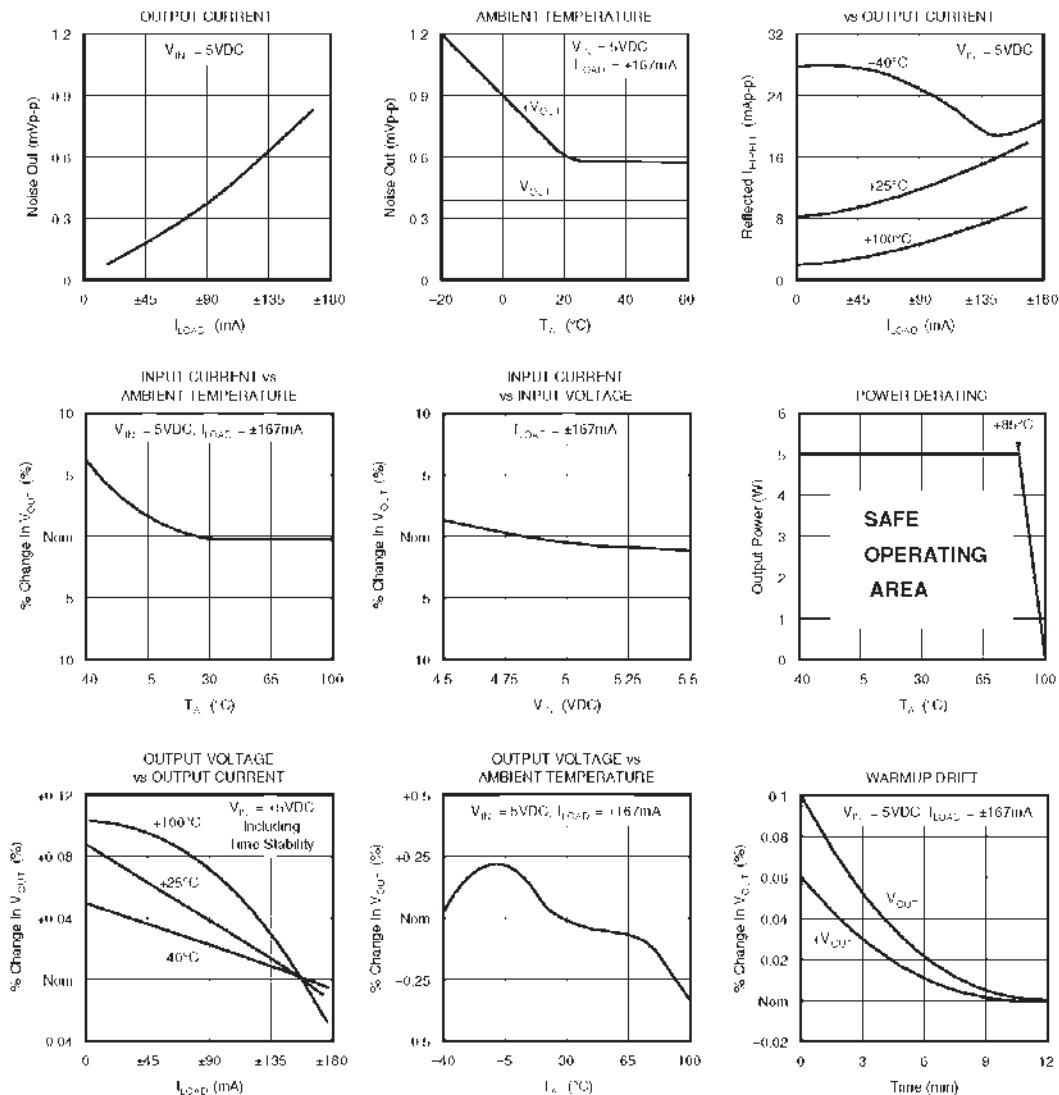
Output Short-Circuit DurationContinuous
 Internal Power Dissipation.....4W
 Lead Temperature (soldering, 10 seconds max).....+300°C

ORDERING INFORMATION

	PWR	1546A	/C
Device Family	PWR indicates DC/DC converter		
Model Number	1546A		
RoHS-Compliant	/C		

TYPICAL PERFORMANCE CURVES

$T_A = +25^\circ\text{C}$, $V_{IN} = 5\text{VDC}$, $I_{LOAD} = \pm 167\text{mA}$ unless otherwise noted.



SOLDERING INFORMATION

The PWR1546AC device is intended for wave soldering or manual soldering. It is not designed or intended to withstand surface mount processes under any circumstances.

The normal wave soldering process can be used with this device where it is subjected to a maximum wave temperature of 260°C for a period of no more than 10 seconds. Within the constraints of these time and temperature limits, the integrity of the device's plastic body will not be compromised and internal temperatures within the converter will not exceed 175°C. Care should be exercised in controlling the manual soldering process within these same time and temperature limits.

Murata Power Solutions, Inc.
11 Cabot Boulevard, Mansfield, MA 02048-1151 U.S.A.
ISO 9001 and 14001 REGISTERED



**This product is subject to the following [operating requirements](#) and the [Life and Safety Critical Application Sales Policy](#):
Refer to: <http://www.murata-ps.com/requirements/>**

Murata Power Solutions, Inc. makes no representation that the use of its products in the circuits described herein, or the use of other technical information contained herein, will not infringe upon existing or future patent rights. The descriptions contained herein do not imply the granting of licenses to make, use, or sell equipment constructed in accordance therewith. Specifications are subject to change without notice.
© 2012 Murata Power Solutions, Inc.



Компания «ЭлектроПласт» предлагает заключение долгосрочных отношений при поставках импортных электронных компонентов на взаимовыгодных условиях!

Наши преимущества:

- Оперативные поставки широкого спектра электронных компонентов отечественного и импортного производства напрямую от производителей и с крупнейших мировых складов;
- Поставка более 17-ти миллионов наименований электронных компонентов;
- Поставка сложных, дефицитных, либо снятых с производства позиций;
- Оперативные сроки поставки под заказ (от 5 рабочих дней);
- Экспресс доставка в любую точку России;
- Техническая поддержка проекта, помощь в подборе аналогов, поставка прототипов;
- Система менеджмента качества сертифицирована по Международному стандарту ISO 9001;
- Лицензия ФСБ на осуществление работ с использованием сведений, составляющих государственную тайну;
- Поставка специализированных компонентов (Xilinx, Altera, Analog Devices, Intersil, Interpoint, Microsemi, Aeroflex, Peregrine, Syfer, Eurofarad, Texas Instrument, Miteq, Cobham, E2V, MA-COM, Hittite, Mini-Circuits, General Dynamics и др.);

Помимо этого, одним из направлений компании «ЭлектроПласт» является направление «Источники питания». Мы предлагаем Вам помощь Конструкторского отдела:

- Подбор оптимального решения, техническое обоснование при выборе компонента;
- Подбор аналогов;
- Консультации по применению компонента;
- Поставка образцов и прототипов;
- Техническая поддержка проекта;
- Защита от снятия компонента с производства.



Как с нами связаться

Телефон: 8 (812) 309 58 32 (многоканальный)

Факс: 8 (812) 320-02-42

Электронная почта: org@eplast1.ru

Адрес: 198099, г. Санкт-Петербург, ул. Калинина, дом 2, корпус 4, литера А.