



# NEC's L-BAND SP3T SWITCH UPG2031TQ

## FEATURES

- **LOW INSERTION LOSS:**  
LINS = 0.45 dB TYP. @  $V_{cont} = 2.8\text{ V/0 V}$ ,  $f = 1.0\text{ GHz}$   
LINS = 0.55 dB TYP. @  $V_{cont} = 2.8\text{ V/0 V}$ ,  $f = 2.0\text{ GHz}$
- **HIGH ISOLATION:**  
ISL = 21 dB TYP. @  $V_{cont} = 2.8\text{ V/0 V}$ ,  $f = 2.0\text{ GHz}$
- **HIGH POWER:**  
 $P_{in} (0.1\text{ dB}) = 33.0\text{ dBm TYP. @ } V_{cont} = 2.8\text{ V/0 V}$ ,  $f = 1.0\text{ GHz}$
- **HIGH-DENSITY SURFACE MOUNTING:**  
10-pin plastic TSON package ( $2.30 \times 2.55 \times 0.60\text{ mm}$ )

## DESCRIPTION

NEC's UPG2031TQ is an L-band SP3T GaAs FET switch for CDMA/PCS/GPS triple mode digital cellular telephone applications. The device can operate from 500 MHz to above 2.0 GHz, with low insertion loss and high linearity.

## APPLICATIONS

- CDMA/PCS/GPS triple mode digital cellular telephones

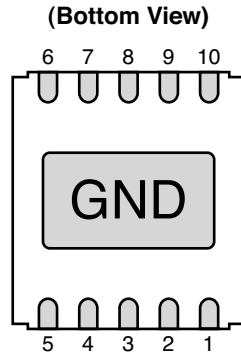
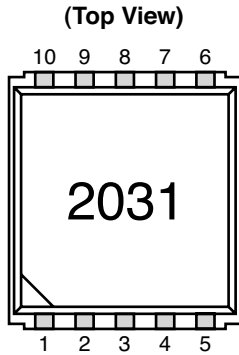
## ORDERING INFORMATION

| Part Number    | Package             | Marking | Supplying Form   |
|----------------|---------------------|---------|--|
| UPG2031TQ-E1-A | 10-pin plastic TSON | 2031    | <ul style="list-style-type: none"><li>• Embossed tape 8 mm wide</li><li>• Pin 5, 6 face the perforation side of the tape</li><li>• Qty 3 kpcs/reel</li></ul> |

**Remark** To order evaluation samples, contact your nearby sales office.  
Part number for sample order: UPG2031TQ

**Caution** Observe precautions when handling, because these devices are sensitive to electrostatic discharge.

## PIN CONNECTIONS AND INTERNAL BLOCK DIAGRAM



| Pin No. | Pin Name           |
|---------|--------------------|
| 1       | RF1                |
| 2       | GND                |
| 3       | RF2                |
| 4       | V <sub>cont2</sub> |
| 5       | RF3                |
| 6       | V <sub>cont3</sub> |
| 7       | GND                |
| 8       | ANT                |
| 9       | GND                |
| 10      | V <sub>cont1</sub> |

### ABSOLUTE MAXIMUM RATINGS (T<sub>A</sub> = 25°C, unless otherwise specified)

| Parameter                     | Symbol            | Ratings      | Unit |
|-------------------------------|-------------------|--------------|------|
| Switch Control Voltage        | V <sub>cont</sub> | -6.0 to +6.0 | V    |
| Input Power                   | P <sub>in</sub>   | +36          | dBm  |
| Operating Ambient Temperature | T <sub>A</sub>    | -45 to +85   | °C   |
| Storage Temperature           | T <sub>stg</sub>  | -55 to +150  | °C   |

### RECOMMENDED OPERATING RANGE (T<sub>A</sub> = 25°C, unless otherwise specified)

| Parameter                     | Symbol                | MIN. | TYP. | MAX. | Unit |
|-------------------------------|-----------------------|------|------|------|------|
| Switch Control Voltage (High) | V <sub>cont (H)</sub> | 2.7  | 2.8  | 3.0  | V    |
| Switch Control Voltage (Low)  | V <sub>cont (L)</sub> | -0.2 | 0    | 0.2  | V    |

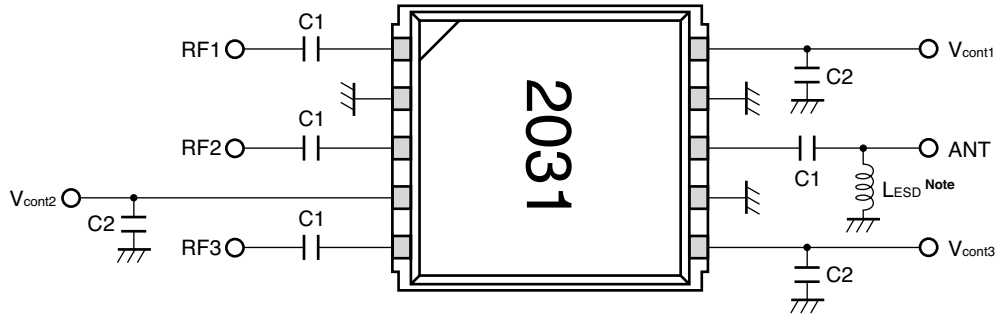
# UPG2031TQ

## ELECTRICAL CHARACTERISTICS

(T<sub>A</sub> = +25°C, V<sub>cont</sub> = 2.8 V/0 V, Z<sub>O</sub> = 50 Ω, off chip DC blocking capacitors value: 56 pF, unless otherwise specified)

| Parameter                           | Symbol                   | ON-Pass     | Test Conditions                          | MIN. | TYP. | MAX. | Unit |
|-------------------------------------|--------------------------|-------------|--|------|------|------|------|
| Insertion Loss                      | L <sub>INS</sub>         | ANT-RF1/2/3 | f = 0.5 to 1.0 GHz                       | -    | 0.45 | 0.65 | dB   |
|                                     |                          |             | f = 1.0 to 2.0 GHz                       | -    | 0.55 | 0.80 | dB   |
| Isolation                           | ISL                      | ANT-RF1/2/3 | f = 0.5 to 1.0 GHz                       | 22   | 26   | -    | dB   |
|                                     |                          | (OFF)       | f = 1.0 to 2.0 GHz                       | 17   | 21   | -    | dB   |
| Input Return Loss                   | RL <sub>in</sub>         | ANT-RF1/2/3 | f = 0.5 to 2.0 GHz                       | 15   | 20   | -    | dB   |
| Output Return Loss                  | RL <sub>out</sub>        | ANT-RF1/2/3 | f = 0.5 to 2.0 GHz                       | 15   | 20   | -    | dB   |
| 0.1 dB Gain Compression Input Power | P <sub>in (0.1 dB)</sub> | ANT-RF1/2/3 | f = 1.0 GHz                              | 31.0 | 33.0 | -    | dBm  |
| 2nd Harmonics                       | 2f <sub>0</sub>          | ANT-RF1/2/3 | f = 1.0 GHz,<br>P <sub>in</sub> = 27 dBm | 65   | 75   | -    | dBc  |
| 3rd Harmonics                       | 3f <sub>0</sub>          | ANT-RF1/2/3 | f = 1.0 GHz,<br>P <sub>in</sub> = 27 dBm | 65   | 75   | -    | dBc  |
| Switch Control Speed                | t <sub>sw</sub>          |             |  | -    | 150  | -    | ns   |
| Switch Control Current              | I <sub>cont</sub>        |             | RF Non                                   | -    | 1    | 50   | μA   |

**EVALUATION CIRCUIT**



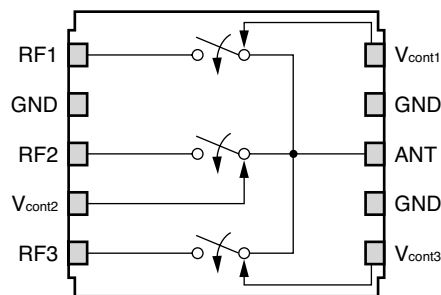
**Note** Recommend attached  $L_{ESD}$  to antenna port for ESD protection.

The application circuits and their parameters are for reference only and are not intended for use in actual design-ins.

**USING THE NEC EVALUATION BOARD**

| Symbol | Values   |
|--------|----------|
| C1     | 56 pF    |
| C2     | 1 000 pF |

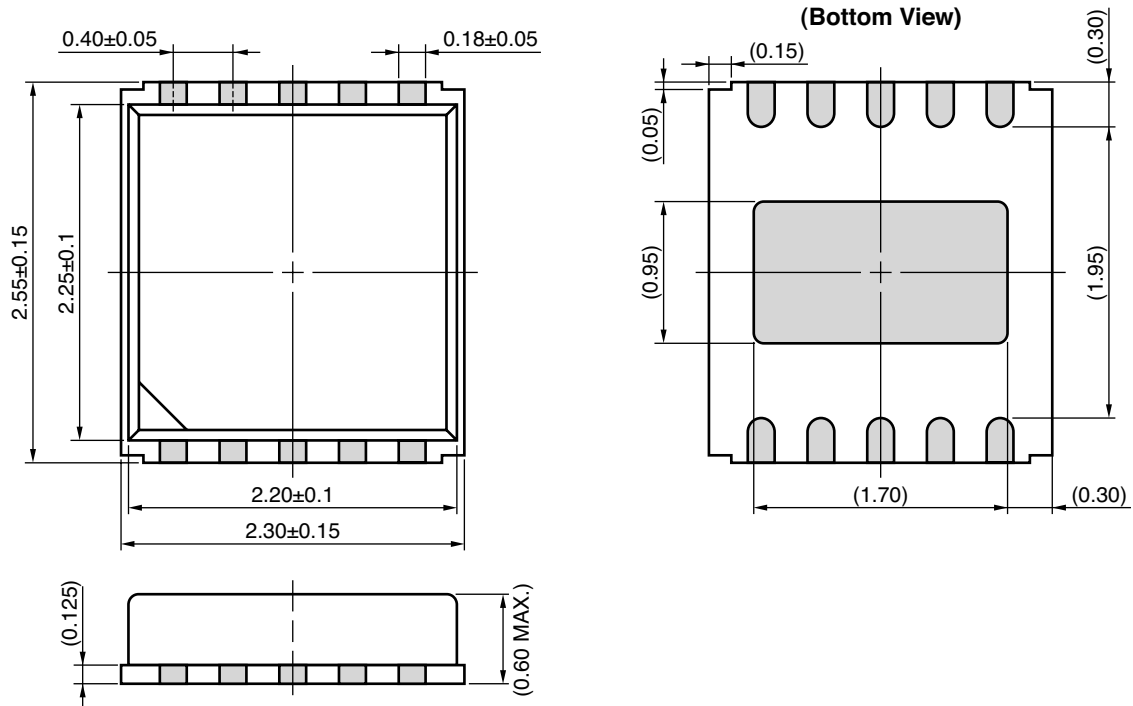
**TRUTH TABLE**



| $V_{cont1}$ | $V_{cont2}$ | $V_{cont3}$ | ANT-RF1 | ANT-RF2 | ANT-RF3 |
|-------------|-------------|-------------|---------|---------|---------|
| High        | Low         | Low         | ON      | OFF     | OFF     |
| Low         | High        | Low         | OFF     | ON      | OFF     |
| Low         | Low         | High        | OFF     | OFF     | ON      |

**PACKAGE DIMENSIONS**

10-PIN PLASTIC TSON (UNIT: mm)



**Remark** ( ): Reference value

## RECOMMENDED SOLDERING CONDITIONS

This product should be soldered and mounted under the following recommended conditions. For soldering methods and conditions other than those recommended below, contact your nearby sales office.

| Soldering Method | Soldering Conditions  | Condition Symbol |
|------------------|---|------------------|
| Infrared Reflow  | Peak temperature (package surface temperature) : 260°C or below<br>Time at peak temperature : 10 seconds or less<br>Time at temperature of 220°C or higher : 60 seconds or less<br>Preheating time at 120 to 180°C : 120±30 seconds<br>Maximum number of reflow processes : 3 times<br>Maximum chlorine content of rosin flux (% mass) : 0.2%(Wt.) or below | IR260            |
| VPS              | Peak temperature (package surface temperature) : 215°C or below<br>Time at temperature of 200°C or higher : 25 to 40 seconds<br>Preheating time at 120 to 150°C : 30 to 60 seconds<br>Maximum number of reflow processes : 3 times<br>Maximum chlorine content of rosin flux (% mass) : 0.2%(Wt.) or below  | VP215            |
| Wave Soldering   | Peak temperature (molten solder temperature) : 260°C or below<br>Time at peak temperature : 10 seconds or less<br>Preheating temperature (package surface temperature) : 120°C or below<br>Maximum number of flow processes : 1 time<br>Maximum chlorine content of rosin flux (% mass) : 0.2%(Wt.) or below  | WS260            |
| Partial Heating  | Peak temperature (pin temperature) : 350°C or below<br>Soldering time (per side of device) : 3 seconds or less<br>Maximum chlorine content of rosin flux (% mass) : 0.2%(Wt.) or below  | HS350            |

**Caution** Do not use different soldering methods together (except for partial heating).

### Life Support Applications

These NEC products are not intended for use in life support devices, appliances, or systems where the malfunction of these products can reasonably be expected to result in personal injury. The customers of CEL using or selling these products for use in such applications do so at their own risk and agree to fully indemnify CEL for all damages resulting from such improper use or sale.

**CEL** California Eastern Laboratories, Your source for NEC RF, Microwave, Optoelectronic, and Fiber Optic Semiconductor Devices.

4590 Patrick Henry Drive • Santa Clara, CA 95054-1817 • (408) 988-3500 • FAX (408) 988-0279 • [www.cel.com](http://www.cel.com)

DATA SUBJECT TO CHANGE WITHOUT NOTICE

03/08/2004

**NEC**  
A Business Partner of NEC Compound Semiconductor Devices, Ltd.

Subject: Compliance with EU Directives

CEL certifies, to its knowledge, that semiconductor and laser products detailed below are compliant with the requirements of European Union (EU) Directive 2002/95/EC Restriction on Use of Hazardous Substances in electrical and electronic equipment (RoHS) and the requirements of EU Directive 2003/11/EC Restriction on Penta and Octa BDE.

CEL Pb-free products have the same base part number with a suffix added. The suffix –A indicates that the device is Pb-free. The –AZ suffix is used to designate devices containing Pb which are exempted from the requirement of RoHS directive (\*). In all cases the devices have Pb-free terminals. All devices with these suffixes meet the requirements of the RoHS directive.

This status is based on CEL’s understanding of the EU Directives and knowledge of the materials that go into its products as of the date of disclosure of this information.

| Restricted Substance per RoHS | Concentration Limit per RoHS (values are not yet fixed) | Concentration contained in CEL devices |     |
|-------------------------------|---|--|-----|
|                               |   | -A                                     | -AZ |
| Lead (Pb)                     | < 1000 PPM  | Not Detected                           | (*) |
| Mercury                       | < 1000 PPM  | Not Detected                           |     |
| Cadmium                       | < 100 PPM   | Not Detected                           |     |
| Hexavalent Chromium           | < 1000 PPM  | Not Detected                           |     |
| PBB                           | < 1000 PPM  | Not Detected                           |     |
| PBDE                          | < 1000 PPM  | Not Detected                           |     |

If you should have any additional questions regarding our devices and compliance to environmental standards, please do not hesitate to contact your local representative.

Important Information and Disclaimer: Information provided by CEL on its website or in other communications concerning the substance content of its products represents knowledge and belief as of the date that it is provided. CEL bases its knowledge and belief on information provided by third parties and makes no representation or warranty as to the accuracy of such information. Efforts are underway to better integrate information from third parties. CEL has taken and continues to take reasonable steps to provide representative and accurate information but may not have conducted destructive testing or chemical analysis on incoming materials and chemicals. CEL and CEL suppliers consider certain information to be proprietary, and thus CAS numbers and other limited information may not be available for release.

In no event shall CEL’s liability arising out of such information exceed the total purchase price of the CEL part(s) at issue sold by CEL to customer on an annual basis.

See CEL Terms and Conditions for additional clarification of warranties and liability.



Компания «ЭлектроПласт» предлагает заключение долгосрочных отношений при поставках импортных электронных компонентов на взаимовыгодных условиях!

Наши преимущества:

- Оперативные поставки широкого спектра электронных компонентов отечественного и импортного производства напрямую от производителей и с крупнейших мировых складов;
- Поставка более 17-ти миллионов наименований электронных компонентов;
- Поставка сложных, дефицитных, либо снятых с производства позиций;
- Оперативные сроки поставки под заказ (от 5 рабочих дней);
- Экспресс доставка в любую точку России;
- Техническая поддержка проекта, помощь в подборе аналогов, поставка прототипов;
- Система менеджмента качества сертифицирована по Международному стандарту ISO 9001;
- Лицензия ФСБ на осуществление работ с использованием сведений, составляющих государственную тайну;
- Поставка специализированных компонентов (Xilinx, Altera, Analog Devices, Intersil, Interpoint, Microsemi, Aeroflex, Peregrine, Syfer, Eurofarad, Texas Instrument, Miteq, Cobham, E2V, MA-COM, Hittite, Mini-Circuits, General Dynamics и др.);

Помимо этого, одним из направлений компании «ЭлектроПласт» является направление «Источники питания». Мы предлагаем Вам помощь Конструкторского отдела:

- Подбор оптимального решения, техническое обоснование при выборе компонента;
- Подбор аналогов;
- Консультации по применению компонента;
- Поставка образцов и прототипов;
- Техническая поддержка проекта;
- Защита от снятия компонента с производства.



#### Как с нами связаться

**Телефон:** 8 (812) 309 58 32 (многоканальный)

**Факс:** 8 (812) 320-02-42

**Электронная почта:** [org@eplast1.ru](mailto:org@eplast1.ru)

**Адрес:** 198099, г. Санкт-Петербург, ул. Калинина, дом 2, корпус 4, литера А.