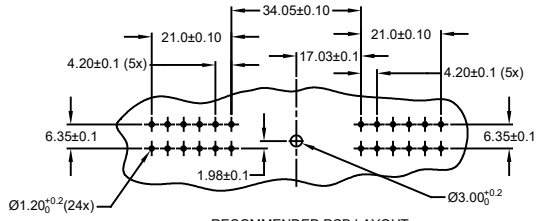
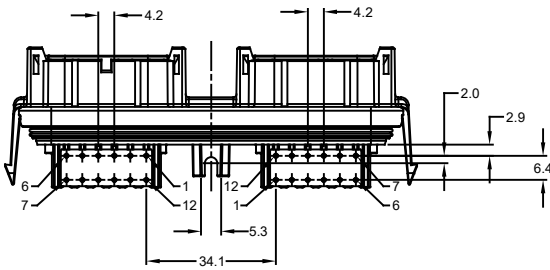
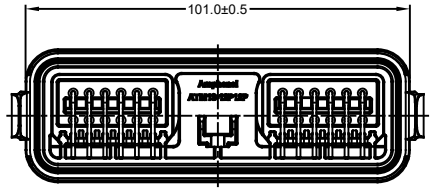
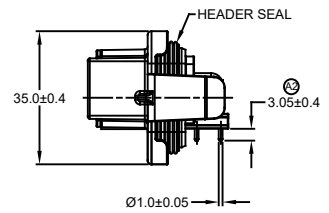
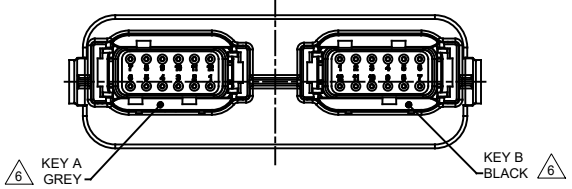
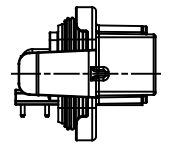
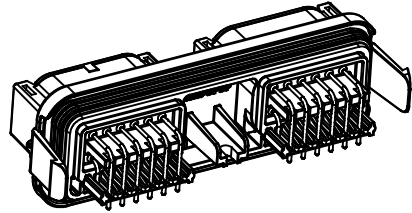
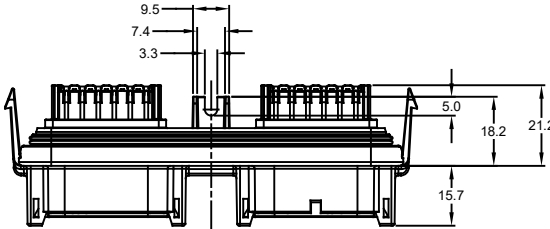


REVISIONS					
REV	ECO	DESCRIPTION	DATE	BY	APPR
A1	-	RELEASE NEW DRAWING	06NOV18	SULLEN	TOMMY
A2	-	UPDATED DRAWING	18FEB19	SULLEN	TOMMY



RECOMMENDED PCB LAYOUT  
VIEW FROM COMPONENTS  
SIDE OF PCB

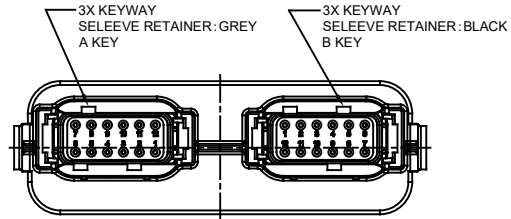
- NOTES: UNLESS OTHERWISE SPECIFIED
- MATERIAL:  
HOUSING: THERMOPLASTIC, BLACK  
SEAL: SILICONE RUBBER  
CONTACT: COPPER ALLOY
  - MODIFICATIONS: RA PCB MOUNT
  - SPECIFICATIONS:  
3.1 CURRENT RATING: 7.5 AMPS  
3.2 OPERATING TEMPERATURE: -55°C TO +125°C  
3.3 DIELECTRIC WITHSTANDING VOLTAGE: LESS THAN 2 MILLIAMPS CURRENT LEAKAGE @ 1500 VOLTS AC  
3.4 INSULATION RESISTANCE: 1000 MEGOHMS MIN @ 25°C  
3.5 MOISTURE RESISTANCE: IP69K ( MATED CONDITION )  
3.6 MATING CYCLE DURABILITY: 100 CYCLES  
3.7 RoHS COMPLIANT
  - MATING PART: ATM06-12SX-  
( X = A,B,C,D KEYS ; \* = ALL MODIFICATIONS )
  - THIS RECEPTACLE IS USED WITH AIPXE-325X4\* ENCLOSURE  
( \* = ALL MODIFICATIONS )

SEE SHEET 2 AND 3 FOR OTHER KEY ARRANGEMENTS AND COLORS  
7. ALL DIMENSIONS ARE FOR REFERENCE USE ONLY

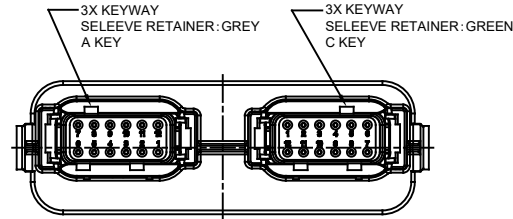
ATM13-12PX-12PX-BMXX		DESCRIPTION		ITEM
PART NUMBER		DESCRIPTION		ITEM
QUANTITY	MATERIALS LIST			
UNLESS OTHERWISE SPECIFIED		SIGNATURES	DATE	<p>Sine Systems - www.amphenol-sine.com 44724 Morley Drive Clinton Township, MI 48036</p> <p>ARMOR IPX RECEPTACLE ATM HEADER, 2 x 12 POSITIONS, SIZE 20 CONTACT</p>
1) All dimensions are in metric (mm).		DRAWN: SULLEN ZHANG	18FEB19	
2) Tolerances are as follows:		CHECKED: ORION LI	18FEB19	
1 PL DEC ±0.30   Fractions ±1/64 2 PL DEC ±0.15   Angles ±1° 3 PL DEC ±0.08		ENGINEER:		
3) Note reference =		APPROVAL: TOMMY XIE	18FEB19	
MATERIAL SPECIFICATIONS:		CUSTOMER:		
PROCESS SPECIFICATIONS:		THIS DRAWING IS SUPPLIED FOR INFORMATION ONLY. DESIGN FEATURES, SPECIFICATIONS AND PERFORMANCE DATA SHOWN HEREON ARE THE PROPERTY OF THE AMPHENOL CORPORATION. NO RIGHTS OF REPRODUCTION ARE IMPLIED. ALL DIMENSIONS ARE SUBJECT TO NORMAL MANUFACTURING VARIATIONS.		
NEXT ASSEMBLY:		SIZE	TYPE	DWG NO.
		B	C-	ATM13-12PX-12PX-BMXX
		SCALE	NONE	REVISION
				A2
		SHEET 1 OF 3		

DRAWING NO. ATM13-12PX-12PX-BMXX REV. A2 SH. 1 OF 3

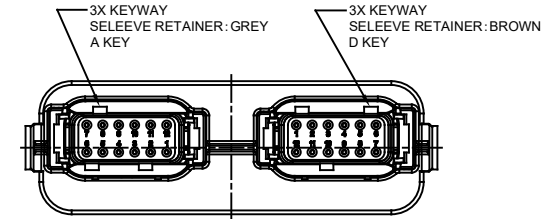
REVISIONS					
REV	ECO	DESCRIPTION	DATE	BY	APPR
A1	-	RELEASE NEW DRAWING	06NOV18	SULLEN	TOMMY
A2	-	UPDATED DRAWING	18FEB19	SULLEN	TOMMY



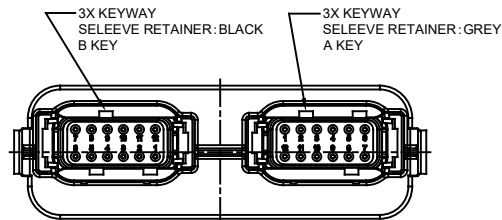
ATM13-12PA-12PB-BMXX  
KEY AB



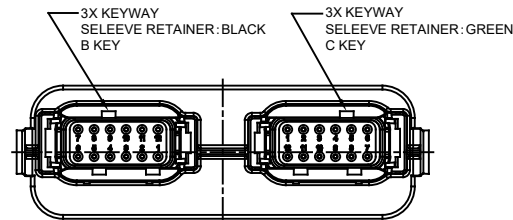
ATM13-12PA-12PC-BMXX  
KEY AC



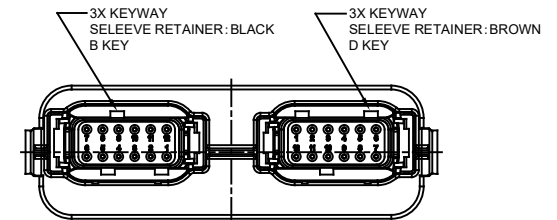
ATM13-12PA-12PD-BMXX  
KEY AD



ATM13-12PB-12PA-BMXX  
KEY BA



ATM13-12PB-12PC-BMXX  
KEY BC



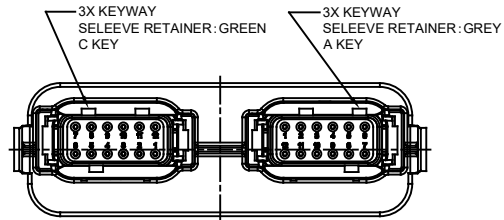
ATM13-12PB-12PD-BMXX  
KEY BD

ATM13-12PX-12PX-BMXX VARIANTS		
CONTACT PLATING	POTTING OR NOT IN RESERVOIR	PART NUMBER
GOLD	NO POTTING	ATM13-12PX-12PX-BM01
TIN	NO POTTING	ATM13-12PX-12PX-BM03

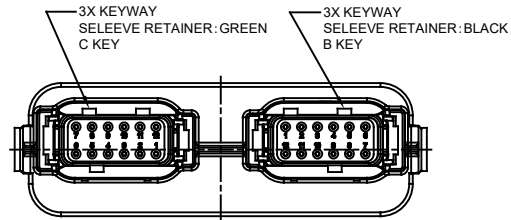
ATM13-12PX-12PX-BMXX																																															
PART NUMBER		DESCRIPTION																																													
ITEM		ITEM																																													
<table border="1"> <thead> <tr> <th>QUANTITY</th> <th colspan="3">MATERIALS LIST</th> </tr> </thead> <tbody> <tr> <td>UNLESS OTHERWISE SPECIFIED:</td> <td>SIGNATURES</td> <td colspan="2">DATE</td> </tr> <tr> <td>1) All dimensions are in metric(mm).</td> <td>DRAWN: SULLENZHANG</td> <td colspan="2">18FEB19</td> </tr> <tr> <td>2) Tolerances are as follows:</td> <td>CHECKED: ORIONLI</td> <td colspan="2">18FEB19</td> </tr> <tr> <td>1 PL DEC ±0.30</td> <td>ENGINEER:</td> <td colspan="2"></td> </tr> <tr> <td>2 PL DEC ±0.15</td> <td>APPROVAL: TOMMY XIE</td> <td colspan="2">18FEB19</td> </tr> <tr> <td>3 PL DEC ±0.08</td> <td>CUSTOMER:</td> <td colspan="2"></td> </tr> <tr> <td>3) Note reference = </td> <td colspan="3">THIS DRAWING IS SUPPLIED FOR INFORMATION ONLY. DESIGN FEATURES, SPECIFICATIONS AND PERFORMANCE DATA SHOWN HEREON ARE THE PROPERTY OF THE AMPHENOL CORPORATION. NO RIGHTS OF REPRODUCTION ARE IMPLIED. ALL DIMENSIONS ARE SUBJECT TO NORMAL MANUFACTURING VARIATIONS.</td> </tr> <tr> <td>MATERIAL SPECIFICATIONS:</td> <td>SIZE</td> <td>TYPE</td> <td>DWG NO.</td> </tr> <tr> <td>PROCESS SPECIFICATIONS:</td> <td>B</td> <td>C-</td> <td>ATM13-12PX-12PX-BMXX</td> </tr> <tr> <td>NEXT ASSY:</td> <td>SCALE:</td> <td colspan="2">NONE</td> </tr> </tbody> </table>				QUANTITY	MATERIALS LIST			UNLESS OTHERWISE SPECIFIED:	SIGNATURES	DATE		1) All dimensions are in metric(mm).	DRAWN: SULLENZHANG	18FEB19		2) Tolerances are as follows:	CHECKED: ORIONLI	18FEB19		1 PL DEC ±0.30	ENGINEER:			2 PL DEC ±0.15	APPROVAL: TOMMY XIE	18FEB19		3 PL DEC ±0.08	CUSTOMER:			3) Note reference =	THIS DRAWING IS SUPPLIED FOR INFORMATION ONLY. DESIGN FEATURES, SPECIFICATIONS AND PERFORMANCE DATA SHOWN HEREON ARE THE PROPERTY OF THE AMPHENOL CORPORATION. NO RIGHTS OF REPRODUCTION ARE IMPLIED. ALL DIMENSIONS ARE SUBJECT TO NORMAL MANUFACTURING VARIATIONS.			MATERIAL SPECIFICATIONS:	SIZE	TYPE	DWG NO.	PROCESS SPECIFICATIONS:	B	C-	ATM13-12PX-12PX-BMXX	NEXT ASSY:	SCALE:	NONE	
QUANTITY	MATERIALS LIST																																														
UNLESS OTHERWISE SPECIFIED:	SIGNATURES	DATE																																													
1) All dimensions are in metric(mm).	DRAWN: SULLENZHANG	18FEB19																																													
2) Tolerances are as follows:	CHECKED: ORIONLI	18FEB19																																													
1 PL DEC ±0.30	ENGINEER:																																														
2 PL DEC ±0.15	APPROVAL: TOMMY XIE	18FEB19																																													
3 PL DEC ±0.08	CUSTOMER:																																														
3) Note reference =	THIS DRAWING IS SUPPLIED FOR INFORMATION ONLY. DESIGN FEATURES, SPECIFICATIONS AND PERFORMANCE DATA SHOWN HEREON ARE THE PROPERTY OF THE AMPHENOL CORPORATION. NO RIGHTS OF REPRODUCTION ARE IMPLIED. ALL DIMENSIONS ARE SUBJECT TO NORMAL MANUFACTURING VARIATIONS.																																														
MATERIAL SPECIFICATIONS:	SIZE	TYPE	DWG NO.																																												
PROCESS SPECIFICATIONS:	B	C-	ATM13-12PX-12PX-BMXX																																												
NEXT ASSY:	SCALE:	NONE																																													
<p><b>Amphenol</b> Sine Systems - www.amphenol-sine.com 44724 Morley Drive Clinton Township, MI 48036</p>																																															
<p>ARMOR IPX RECEPTACLE ATM HEADER, 2 x 12 POSITIONS, SIZE 20 CONTACT</p>																																															
		REVISION	A2																																												
		SHEET	2 OF 3																																												

TITLE: ARMOR IPX RECEPTACLE ATM HDR, 2x 12 POSITIONS, SIZE 20 CONTACT  
 DWG NO: ATM13-12PX-12PX-BMXX  
 REV: A2  
 SH: 2  
 OF: 3

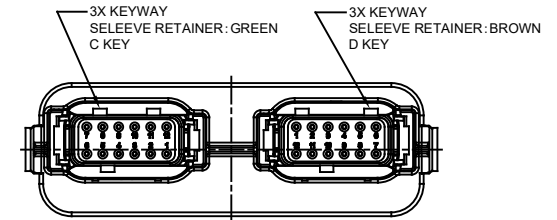
REVISIONS					
REV	ECO	DESCRIPTION	DATE	BY	APPR
A1	-	RELEASE NEW DRAWING	06NOV18	SULLEN	TOMMY
A2	-	UPDATED DRAWING	18FEB19	SULLEN	TOMMY



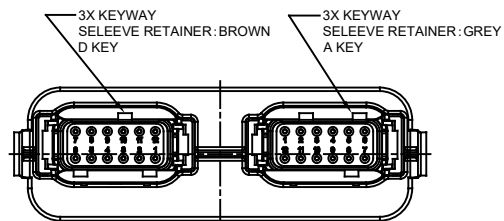
ATM13-12PC-12PA-BMXX  
KEY CA



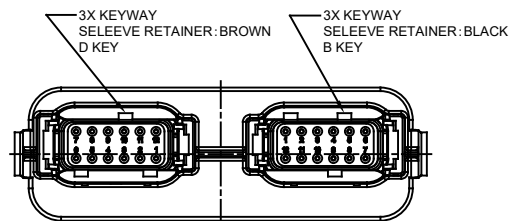
ATM13-12PC-12PB-BMXX  
KEY CB



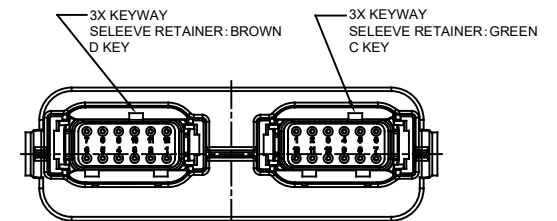
ATM13-12PC-12PD-BMXX  
KEY CD



ATM13-12PD-12PA-BMXX  
KEY DA



ATM13-12PD-12PB-BMXX  
KEY DB



ATM13-12PD-12PC-BMXX  
KEY DC

ATM13-12PX-12PX-BMXX VARIANTS		
CONTACT PLATING	POTTING OR NOT IN RESERVOIR	PART NUMBER
GOLD	NO POTTING	ATM13-12PX-12PX-BM01
TIN	NO POTTING	ATM13-12PX-12PX-BM03

ATM13-12PX-12PX-BMXX		DESCRIPTION		ITEM
QUANTITY	PART NUMBER	MATERIALS LIST		
UNLESS OTHERWISE SPECIFIED		SIGNATURES		DATE
1) All dimensions are in metric (mm).		DRAWN: SULLENZHANG		18FEB19
2) Tolerances are as follows:		CHECKED: ORIONLI		18FEB19
1 PL DEC ±0.30		ENGINEER:		
2 PL DEC ±0.15		APPROVAL: TOMMY XIE		18FEB19
3 PL DEC ±0.08		CUSTOMER:		
3) Note reference =		THIS DRAWING IS SUPPLIED FOR INFORMATION ONLY. DESIGN FEATURES, SPECIFICATIONS AND PERFORMANCE DATA SHOWN HEREON ARE THE PROPERTY OF THE AMPHENOL CORPORATION. NO RIGHTS OF REPRODUCTION ARE IMPLIED. ALL DIMENSIONS ARE SUBJECT TO NORMAL MANUFACTURING VARIATIONS.		
MATERIAL SPECIFICATIONS:		CUSTOMER:		
PROCESS SPECIFICATIONS:		SCALE: NONE		
NEXT ASSY:		SIZE: B		TYPE: C-
		DWG NO: ATM13-12PX-12PX-BMXX		REVISION: A2
		SHEET 3 OF 3		

TITLE: ARMOR IPX RECEPTACLE ATM HEADER, 2x 12 POSITIONS, SIZE 20 CONTACT  
 DWG NO.: ATM13-12PX-12PX-BMXX  
 REV: A2  
 SH: 3  
 OF: 3



Компания «ЭлектроПласт» предлагает заключение долгосрочных отношений при поставках импортных электронных компонентов на взаимовыгодных условиях!

Наши преимущества:

- Оперативные поставки широкого спектра электронных компонентов отечественного и импортного производства напрямую от производителей и с крупнейших мировых складов;
- Поставка более 17-ти миллионов наименований электронных компонентов;
- Поставка сложных, дефицитных, либо снятых с производства позиций;
- Оперативные сроки поставки под заказ (от 5 рабочих дней);
- Экспресс доставка в любую точку России;
- Техническая поддержка проекта, помощь в подборе аналогов, поставка прототипов;
- Система менеджмента качества сертифицирована по Международному стандарту ISO 9001;
- Лицензия ФСБ на осуществление работ с использованием сведений, составляющих государственную тайну;
- Поставка специализированных компонентов (Xilinx, Altera, Analog Devices, Intersil, Interpoint, Microsemi, Aeroflex, Peregrine, Syfer, Eurofarad, Texas Instrument, Miteq, Cobham, E2V, MA-COM, Hittite, Mini-Circuits, General Dynamics и др.);

Помимо этого, одним из направлений компании «ЭлектроПласт» является направление «Источники питания». Мы предлагаем Вам помощь Конструкторского отдела:

- Подбор оптимального решения, техническое обоснование при выборе компонента;
- Подбор аналогов;
- Консультации по применению компонента;
- Поставка образцов и прототипов;
- Техническая поддержка проекта;
- Защита от снятия компонента с производства.



#### Как с нами связаться

**Телефон:** 8 (812) 309 58 32 (многоканальный)

**Факс:** 8 (812) 320-02-42

**Электронная почта:** [org@eplast1.ru](mailto:org@eplast1.ru)

**Адрес:** 198099, г. Санкт-Петербург, ул. Калинина, дом 2, корпус 4, литера А.