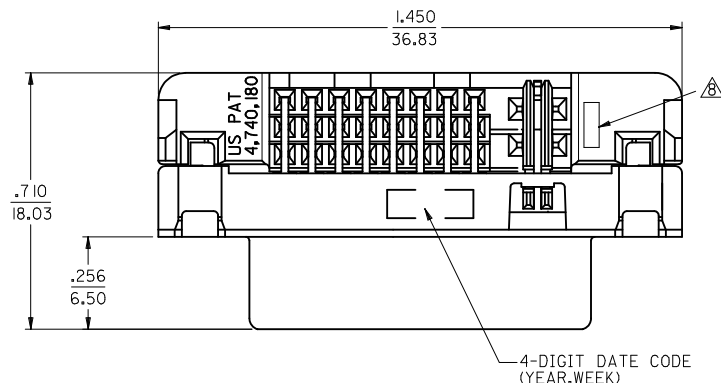


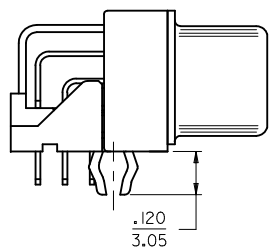
| PART NUMBER | DIM. *A*  | PLATING OPTION |
|-------------|-----------|----------------|
| 74320-9000  | .092/2.34 | 1              |
| 74320-9004  | .092/2.34 | 2              |
| 74320-9006  | .110/2.79 | 2              |



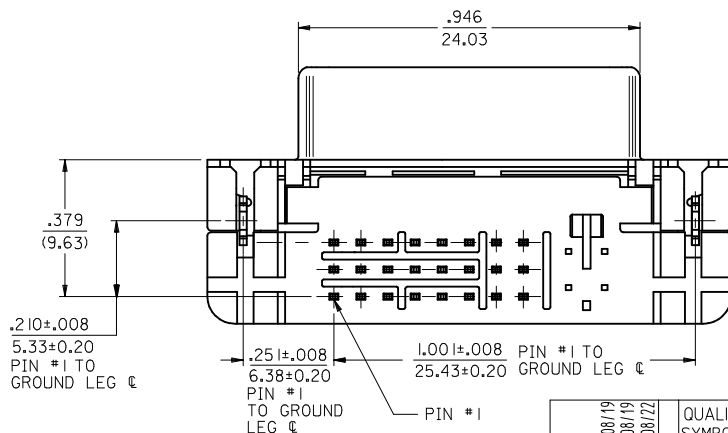
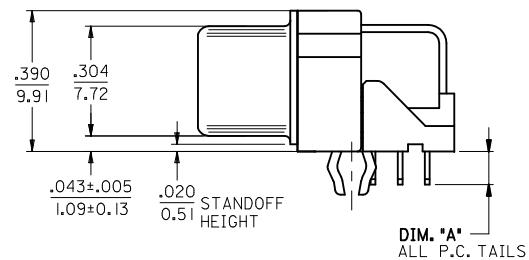
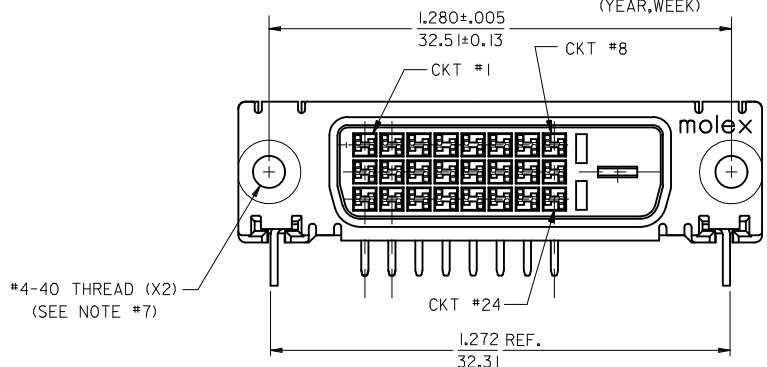
NOTES:

- MATERIALS:  
SHIELD -- DEEP DRAW STEEL.  
HOUSING -- GLASS FILLED POLYMER, NATURAL (WHITE), UL 94v-0.  
TAIL ALIGNER -- GLASS FILLED POLYMER, NATURAL (WHITE), UL 94v-0.  
CONTACTS -- COPPER ALLOY.  
MICROCROSS GROUND -- COPPER ALLOY.
- PLATING: SEE SHEET 2
- PRODUCT CONFORMS TO MOLEX PRODUCT SPECIFICATION NUMBER PS-74320-001.
- SEE SHEET 2 FOR RECOMMENDED PANEL CUT-OUT AND P.C.B. LAYOUT.
- PARTS WILL BE PACKAGED IN TRAYS PER PK-74320-010.
- PRODUCT CONFORMS TO DDWG DVI SPECIFICATION. REFER TO THIS SPECIFICATION FOR CONNECTOR MATING DIMENSIONS.
- RECOMMENDED MOUNTING HARDWARE IS MOLEX P/N 71781-0001 OR 82007-0300 OR 88780-6066. REFER TO PRODUCT SPECIFICATION NUMBER PS-74320-001 FOR THE APPLICATION TORQUE REQUIREMENT FOR ASSEMBLING MOUNTING HARDWARE.

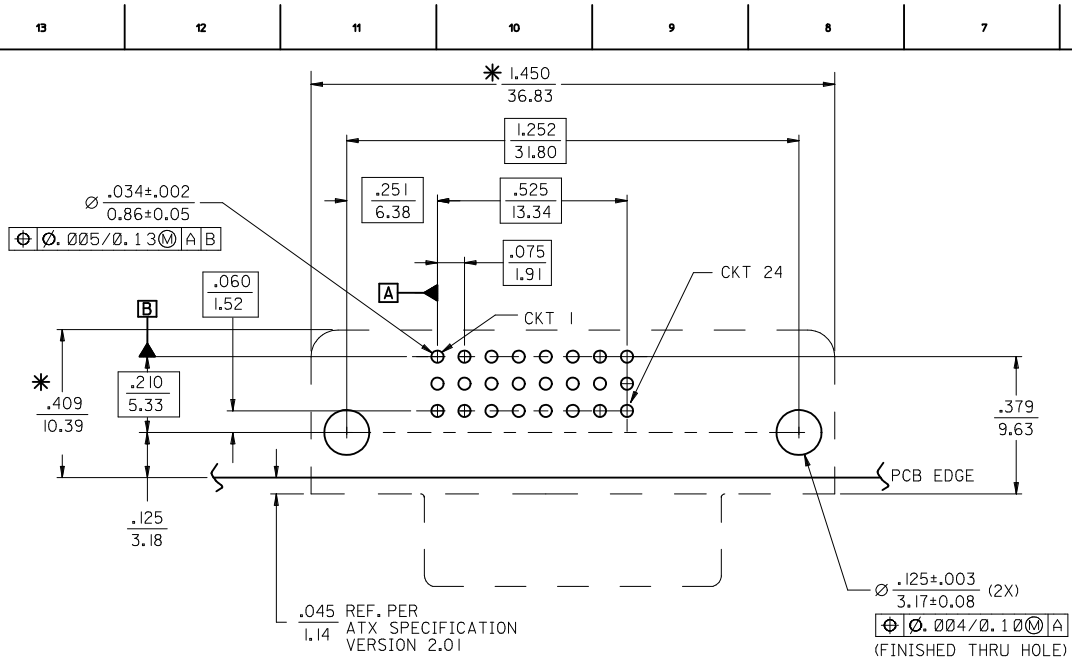
△ CAVITY NO. AND MANUFACTURING PLANT CODE.



#4-40 THREAD (X2)  
(SEE NOTE #7)



| REV | DESCRIPTION  | QUALITY SYMBOLS | GENERAL TOLERANCES (UNLESS SPECIFIED)                                                                                         |        | DIMENSION STYLE |            | SCALE       | DESIGN UNITS       | THIRD ANGLE PROJECTION                                |
|-----|--------------|-----------------|-------------------------------------------------------------------------------------------------------------------------------|--------|-----------------|------------|-------------|--------------------|-------------------------------------------------------|
|     |              |                 | m/m                                                                                                                           | INCH   | IN/MM           |            |             |                    |                                                       |
| 1   | DRWN: XJSONG | ▽=0             | 4 PLACES                                                                                                                      | ± .010 | INCH            | DATE       | 1:1         | INCH               | DVI-D/ATX RIGHT ANGLE RECEPTACLE CONNECTOR W/FORKLOCK |
| 2   | CHKD: XJSONG | ▽=0             | 3 PLACES                                                                                                                      | ± .010 | DATE            | 2011/08/19 | TITLE       |                    |                                                       |
| 3   | APPR: RZHANG | ▽=0             | 2 PLACES                                                                                                                      | ± 0.25 | DATE            | 2011/08/19 | CHECKED BY  | MOLEX INCORPORATED | SD-74320-009                                          |
| 4   |              |                 | 1 PLACE                                                                                                                       | ± 0.25 | DATE            | 2011/08/22 | APPROVED BY |                    |                                                       |
|     |              |                 | ANGULAR ±1/2°                                                                                                                 |        |                 |            | RZHANG      | DOCUMENT NO.       | 1 OF 2                                                |
|     |              |                 | DRAFT WHERE APPLICABLE MUST REMAIN WITHIN DIMENSIONS                                                                          |        | SEE TABLE       |            |             |                    |                                                       |
|     |              |                 | THIS DRAWING CONTAINS INFORMATION THAT IS PROPRIETARY TO MOLEX INCORPORATED AND SHOULD NOT BE USED WITHOUT WRITTEN PERMISSION |        |                 |            |             |                    |                                                       |



**RECOMMENDED PCB LAYOUT**

COMPONENT SIDE OF PCB SHOWN

\* THESE DIMENSIONS REPRESENT CONNECTOR OVERLAY ON PCB.

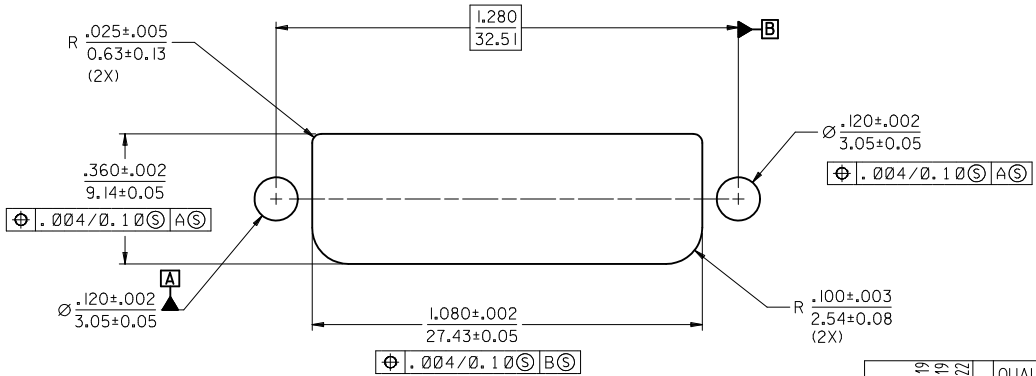
**PLATING OPTIONS:**

**PLATING OPTION #1:**

OUTER SHIELD -- 150u"/(3.75um) MIN. BRIGHT TIN OVER 50u"/(1.27um) MIN. NICKEL OVER COPPER FLASH  
 .075"/(1.9mm) CONTACTS -- 30u"/(0.75um) MIN. SELECT GOLD AND 100u"/(2.50um) MIN. SELECT PURE TIN OVER 50u"/(1.27um) MIN. NICKEL OVERALL.

**PLATING OPTION #2:**

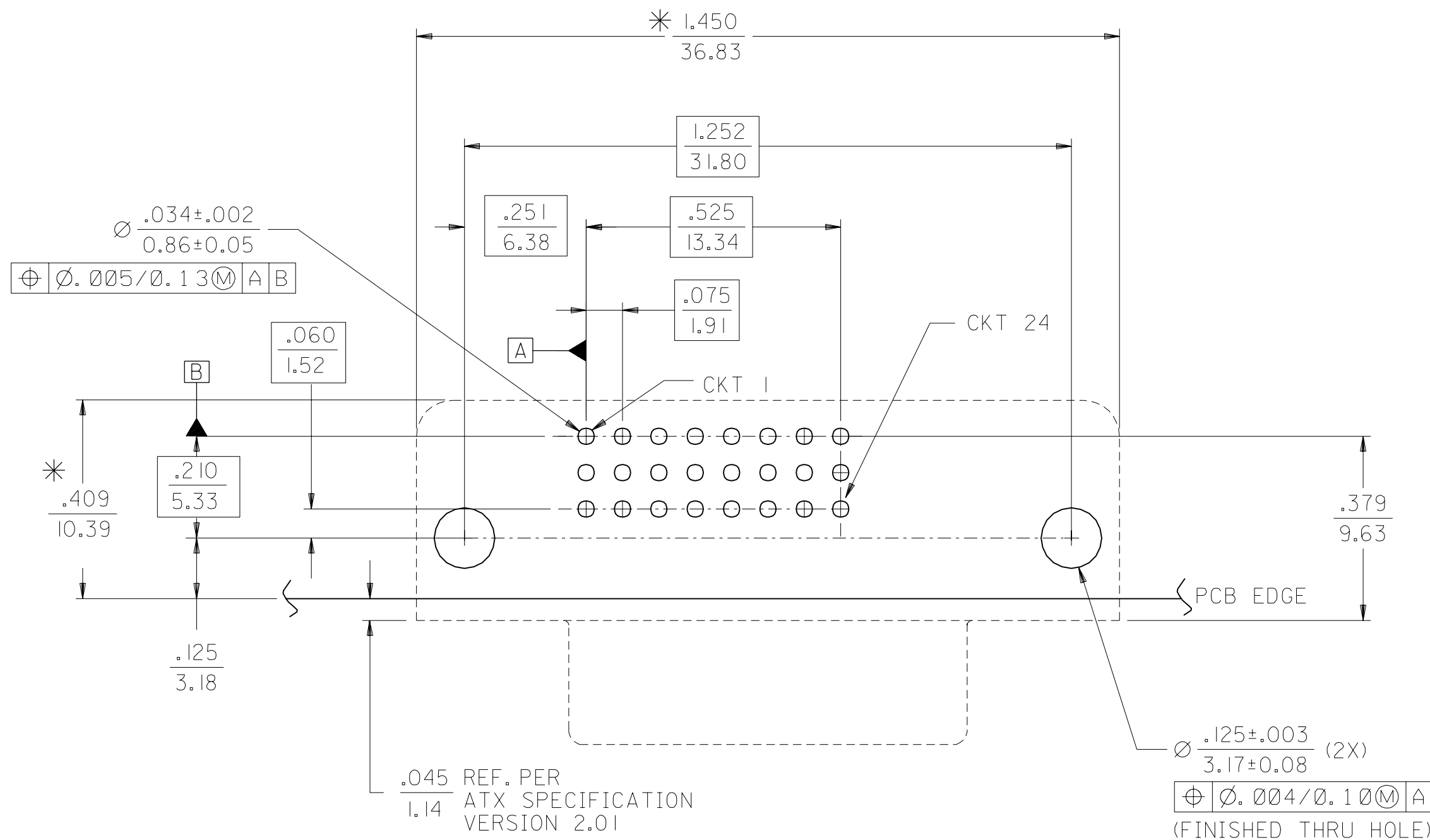
OUTER SHIELD -- 150u"/(3.75um) MIN. BRIGHT TIN OVER 50u"/(1.27um) MIN. NICKEL OVER COPPER FLASH  
 .075"/(1.9mm) CONTACTS -- SELECT GOLD FLASH AND 100u"/(2.50um) MIN. SELECT PURE TIN OVER 50u"/(1.27um) MIN. NICKEL OVERALL.



**RECOMMENDED PANEL CUT-OUT**

PANEL THICKNESS: .030" - .040"

| <b>SEE SHEET 1</b><br>EC NO: SH2012-0047<br>DRAWN: XJSONG 2011/08/19<br>CHKD: XJSONG 2011/08/19<br>APPR: RZHANG 2011/08/22    | QUALITY SYMBOLS<br>▽=0<br>▽=0<br>▽=0 | GENERAL TOLERANCES (UNLESS SPECIFIED)<br><table border="1"> <tr> <th></th> <th>mm</th> <th>INCH</th> </tr> <tr> <td>4 PLACES</td> <td>±.005</td> <td>±.0002</td> </tr> <tr> <td>3 PLACES</td> <td>±.005</td> <td>±.0002</td> </tr> <tr> <td>2 PLACES</td> <td>±.010</td> <td>±.0004</td> </tr> <tr> <td>1 PLACE</td> <td>±.025</td> <td>±.0010</td> </tr> </table> ANGULAR ±1/2° |        | mm                         | INCH | 4 PLACES | ±.005 | ±.0002 | 3 PLACES | ±.005 | ±.0002 | 2 PLACES | ±.010 | ±.0004 | 1 PLACE | ±.025 | ±.0010 | DIMENSION STYLE<br><b>IN/MM</b> | SCALE<br><b>1:1</b> | DESIGN UNITS<br><b>INCH</b> | THIRD ANGLE PROJECTION |
|-------------------------------------------------------------------------------------------------------------------------------|--------------------------------------|----------------------------------------------------------------------------------------------------------------------------------------------------------------------------------------------------------------------------------------------------------------------------------------------------------------------------------------------------------------------------------|--------|----------------------------|------|----------|-------|--------|----------|-------|--------|----------|-------|--------|---------|-------|--------|---------------------------------|---------------------|-----------------------------|------------------------|
|                                                                                                                               |                                      | mm                                                                                                                                                                                                                                                                                                                                                                               | INCH   |                            |      |          |       |        |          |       |        |          |       |        |         |       |        |                                 |                     |                             |                        |
|                                                                                                                               | 4 PLACES                             | ±.005                                                                                                                                                                                                                                                                                                                                                                            | ±.0002 |                            |      |          |       |        |          |       |        |          |       |        |         |       |        |                                 |                     |                             |                        |
|                                                                                                                               | 3 PLACES                             | ±.005                                                                                                                                                                                                                                                                                                                                                                            | ±.0002 |                            |      |          |       |        |          |       |        |          |       |        |         |       |        |                                 |                     |                             |                        |
| 2 PLACES                                                                                                                      | ±.010                                | ±.0004                                                                                                                                                                                                                                                                                                                                                                           |        |                            |      |          |       |        |          |       |        |          |       |        |         |       |        |                                 |                     |                             |                        |
| 1 PLACE                                                                                                                       | ±.025                                | ±.0010                                                                                                                                                                                                                                                                                                                                                                           |        |                            |      |          |       |        |          |       |        |          |       |        |         |       |        |                                 |                     |                             |                        |
| DRAWN BY<br>XJSONG                                                                                                            | DATE<br>2011/08/19                   | TITLE<br><b>DVI-D/ATX RIGHT ANGLE RECEPTACLE CONNECTOR W/FORKLOCK</b>                                                                                                                                                                                                                                                                                                            |        |                            |      |          |       |        |          |       |        |          |       |        |         |       |        |                                 |                     |                             |                        |
| CHECKED BY<br>XJSONG                                                                                                          | DATE<br>2011/08/19                   |                                                                                                                                                                                                                                                                                                                                                                                  |        |                            |      |          |       |        |          |       |        |          |       |        |         |       |        |                                 |                     |                             |                        |
| APPROVED BY<br>RZHANG                                                                                                         | DATE<br>2011/08/22                   |                                                                                                                                                                                                                                                                                                                                                                                  |        |                            |      |          |       |        |          |       |        |          |       |        |         |       |        |                                 |                     |                             |                        |
| MATERIAL NO.<br><b>SEE SHEET 1</b>                                                                                            |                                      | DOCUMENT NO.<br><b>SD-74320-009</b>                                                                                                                                                                                                                                                                                                                                              |        | SHEET NO.<br><b>2 OF 2</b> |      |          |       |        |          |       |        |          |       |        |         |       |        |                                 |                     |                             |                        |
| DRAFT WHERE APPLICABLE MUST REMAIN WITHIN DIMENSIONS                                                                          |                                      |                                                                                                                                                                                                                                                                                                                                                                                  |        |                            |      |          |       |        |          |       |        |          |       |        |         |       |        |                                 |                     |                             |                        |
| THIS DRAWING CONTAINS INFORMATION THAT IS PROPRIETARY TO MOLEX INCORPORATED AND SHOULD NOT BE USED WITHOUT WRITTEN PERMISSION |                                      |                                                                                                                                                                                                                                                                                                                                                                                  |        |                            |      |          |       |        |          |       |        |          |       |        |         |       |        |                                 |                     |                             |                        |



RECOMMENDED PCB LAYOUT

COMPONENT SIDE OF PCB SHOWN

\* THESE DIMENSIONS REPRESENT CONNECTOR OVERLAY ON PCB.

PLATING OPTIONS:

PLATING OPTION #1:

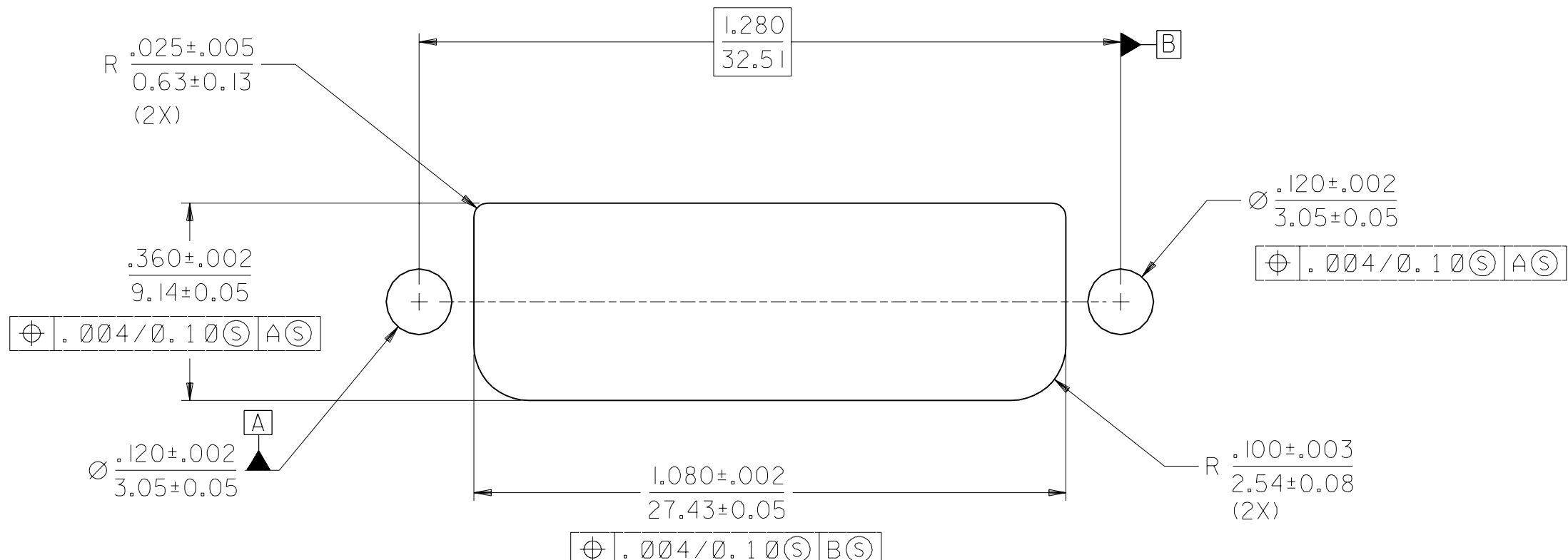
OUTER SHIELD -- 150u"/(3.75um) MIN. BRIGHT TIN OVER 50u"/(1.27um) MIN. NICKEL OVER COPPER FLASH

.075"/(1.91mm) CONTACTS -- 30u"/(0.75um) MIN. SELECT GOLD AND 100u"/(2.50um) MIN. SELECT PURE TIN OVER 50u"/(1.27um) MIN. NICKEL OVERALL.

PLATING OPTION #2:

OUTER SHIELD -- 150u"/(3.75um) MIN. BRIGHT TIN OVER 50u"/(1.27um) MIN. NICKEL OVER COPPER FLASH

.075"/(1.91mm) CONTACTS -- SELECT GOLD FLASH AND 100u"/(2.50um) MIN. SELECT PURE TIN OVER 50u"/(1.27um) MIN. NICKEL OVERALL.



RECOMMENDED PANEL CUT-OUT

PANEL THICKNESS: .030" - .040"

|                                                                                                            |                                              |                                           |                                                                                                                                |                                                                                      |                           |                                                                                                                                                                                                                                                                  |
|------------------------------------------------------------------------------------------------------------|----------------------------------------------|-------------------------------------------|--------------------------------------------------------------------------------------------------------------------------------|--------------------------------------------------------------------------------------|---------------------------|------------------------------------------------------------------------------------------------------------------------------------------------------------------------------------------------------------------------------------------------------------------|
| MODIFICATION<br>EC NO. SH2004-0130<br>DRWN: DXUE 04/03/05<br>CHK: HARVEY 04/03/11<br>APPR: SHUANG 04/03/12 | QUALITY SYMBOLS<br>MAJOR = 0<br>CRITICAL = 0 | GENERAL TOLERANCES:<br>(UNLESS SPECIFIED) | SCALE<br>4 : 1                                                                                                                 | DESIGN UNITS<br><input type="checkbox"/> mm <input checked="" type="checkbox"/> INCH | THIRD ANGLE PROJECTION    | DIMENSIONS:<br><input type="checkbox"/> INCH ONLY <input type="checkbox"/> SHT <input type="checkbox"/> REV<br><input type="checkbox"/> mm <input checked="" type="checkbox"/> INCH <input type="checkbox"/> mm ONLY <input type="checkbox"/> REVISE ON CAD ONLY |
|                                                                                                            | 4 PLACES ±0.     ±.                          | mm     INCH                               | DRAWN BY & DATE<br>TMCCLELL 99/05/12                                                                                           | TITLE:<br>DVI - D/ATX<br>RIGHT ANGLE RECEPTACLE<br>CONNECTOR W/FORKLOCK              |                           |                                                                                                                                                                                                                                                                  |
|                                                                                                            | 3 PLACES ±0.     ±.010                       | mm     INCH                               | CHECKED BY & DATE<br>MOSULLIV 99/05/12                                                                                         | MOLEX INCORPORATED                                                                   |                           |                                                                                                                                                                                                                                                                  |
|                                                                                                            | 2 PLACES ±0.25     ±.010                     | mm     INCH                               | APPROVED BY & DATE<br>NELLIGAN 99/05/15                                                                                        | CAD FILENAME<br>SD74320009.S02                                                       | MATERIAL NO.<br>SEE CHART | DRAWING NO.<br>SD-74320-009                                                                                                                                                                                                                                      |
| 1 PLACE ±0.25     ±.010                                                                                    | mm     INCH                                  | ANGULAR: ± 1/2°                           | THIS DRAWING CONTAINS INFORMATION THAT IS PROPRIETARY TO MOLEX INCORPORATED AND SHOULD NOT BE USED WITHOUT WRITTEN PERMISSION. |                                                                                      |                           | SIZE<br>C                                                                                                                                                                                                                                                        |
| DRAFT WHERE APPLICABLE MUST REMAIN WITHIN DIMENSIONS                                                       |                                              |                                           |                                                                                                                                |                                                                                      |                           |                                                                                                                                                                                                                                                                  |



Компания «ЭлектроПласт» предлагает заключение долгосрочных отношений при поставках импортных электронных компонентов на взаимовыгодных условиях!

Наши преимущества:

- Оперативные поставки широкого спектра электронных компонентов отечественного и импортного производства напрямую от производителей и с крупнейших мировых складов;
- Поставка более 17-ти миллионов наименований электронных компонентов;
- Поставка сложных, дефицитных, либо снятых с производства позиций;
- Оперативные сроки поставки под заказ (от 5 рабочих дней);
- Экспресс доставка в любую точку России;
- Техническая поддержка проекта, помощь в подборе аналогов, поставка прототипов;
- Система менеджмента качества сертифицирована по Международному стандарту ISO 9001;
- Лицензия ФСБ на осуществление работ с использованием сведений, составляющих государственную тайну;
- Поставка специализированных компонентов (Xilinx, Altera, Analog Devices, Intersil, Interpoint, Microsemi, Aeroflex, Peregrine, Syfer, Eurofarad, Texas Instrument, Miteq, Cobham, E2V, MA-COM, Hittite, Mini-Circuits, General Dynamics и др.);

Помимо этого, одним из направлений компании «ЭлектроПласт» является направление «Источники питания». Мы предлагаем Вам помощь Конструкторского отдела:

- Подбор оптимального решения, техническое обоснование при выборе компонента;
- Подбор аналогов;
- Консультации по применению компонента;
- Поставка образцов и прототипов;
- Техническая поддержка проекта;
- Защита от снятия компонента с производства.



#### Как с нами связаться

**Телефон:** 8 (812) 309 58 32 (многоканальный)

**Факс:** 8 (812) 320-02-42

**Электронная почта:** [org@eplast1.ru](mailto:org@eplast1.ru)

**Адрес:** 198099, г. Санкт-Петербург, ул. Калинина, дом 2, корпус 4, литера А.