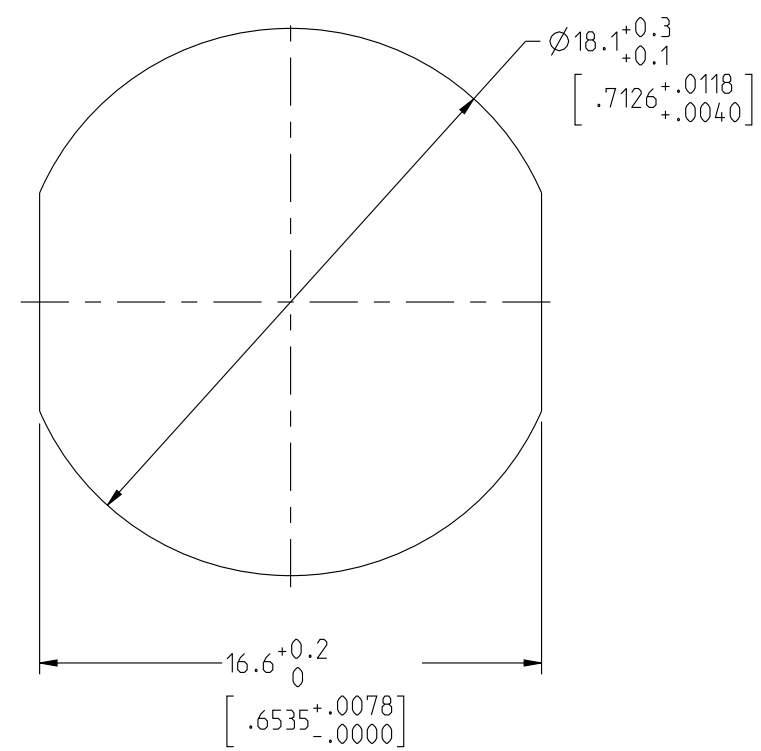


THIS DRAWING IS A CONTROLLED DOCUMENT FOR SOURIAU USA, INC. IT IS SUBJECT TO CHANGE WITHOUT NOTIFICATION. CONTACT THE DOCUMENT CONTROL CENTER FOR THE LATEST REVISION.

ELECTRICAL:
 EMI SHIELDING : SHIELDED FOR THE RANGE 55dB UP TO 100MHZ
 INSULATION RESISTANCE : >500MΩ PER ANSI-EIA-364-D METHOD 21
 MAX. CURRENT RATING : SEE INSULATOR DRAWING
 CONNECTOR TESTING : SEE INSULATOR DRAWING
 VOLTAGE :
 CONNECTOR WORKING : SEE INSULATOR DRAWING
 VOLTAGE :

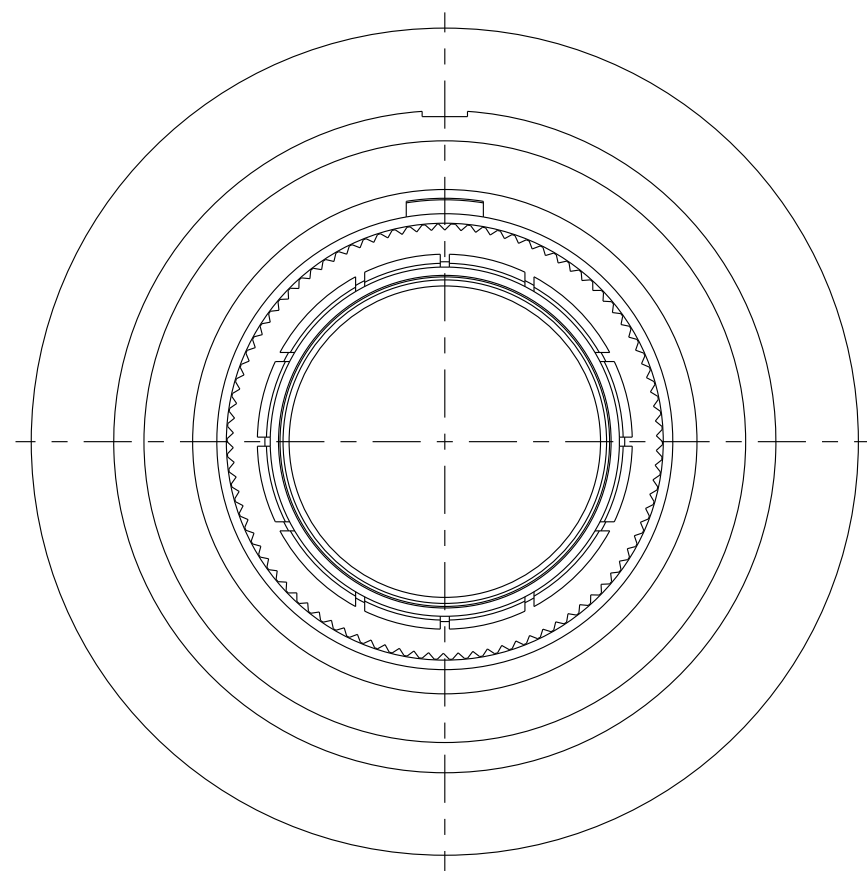
ENVIRONMENTAL:
 ENDURANCE: 1000 CYCLES AS PER MIL-STD 1344A, METHOD 2016.1
 SHOCK: 50 g , DURATION 6 ms; AS PER MIL-STD 1344A, METHOD 2004.1
 VIBRATIONS: 10 TO 2000Hz g = 20g, AS PER MIL-STD 1344A, METHOD 2005.1
 PROTECTION INDEX: IP 40 AS PER IEC 529
 ROHS COMPLIANT
 SALT MIST : 48Hr PER SAE AS 1344 METHOD 1001.1 CEI 529
 OPERATING TEMPERATURE: -55°C TO +125°C (-67°F TO +257°F)

| | |
|----------|---------------------------|
| MASS (g) | VOLUME (mm ³) |
| 21.5 | 4713 |

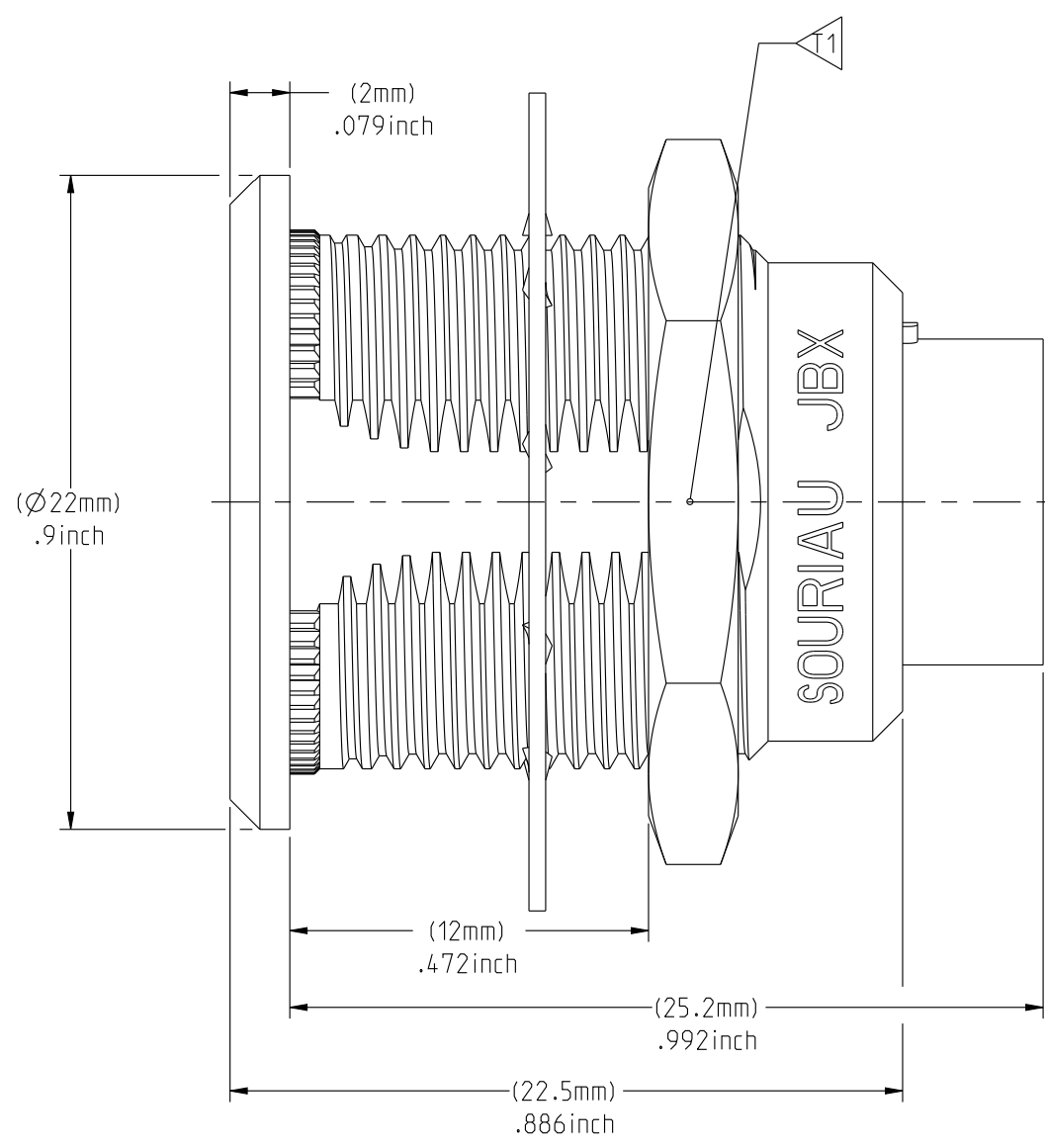


RECOMMENDED PANEL CUTOUT

NOTES:
 1 RED BAND
MATERIAL:
 OUTER SHELL & NUT : BRASS
 SHIELD RING :
FINISH:
 OUTER SHELL : CHROME
 OTHER BRASS PARTS : NICKEL
TOOLS



MATING SIDE VIEW



WIRE SIDE VIEW

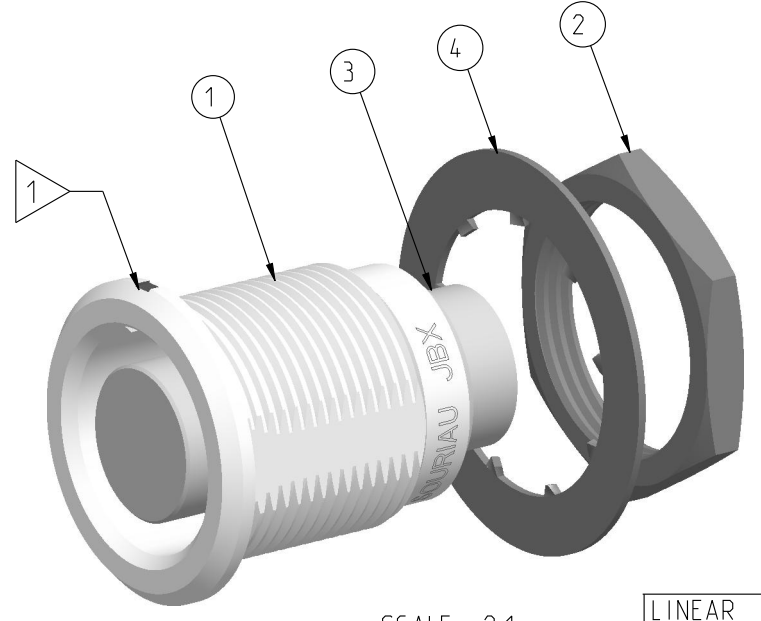
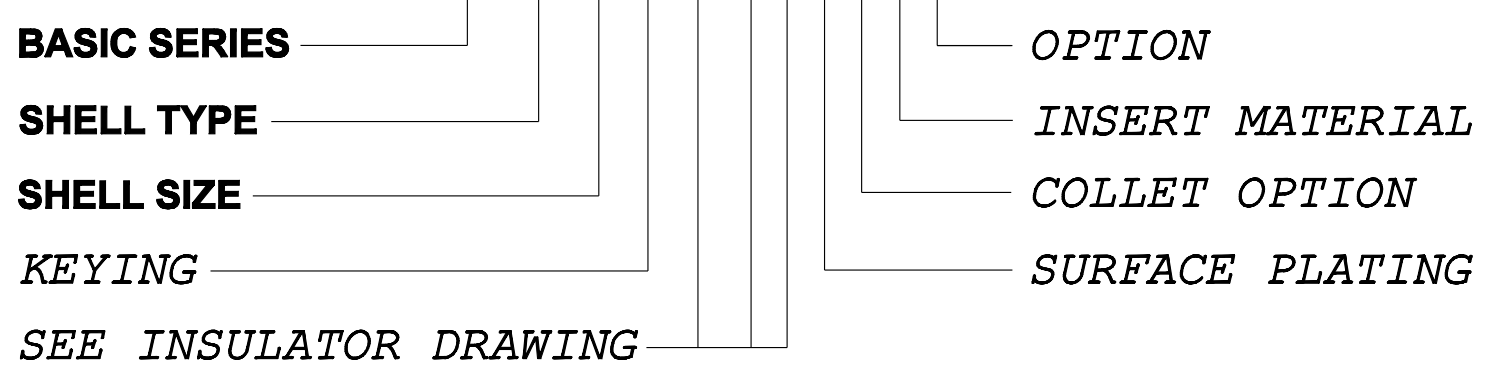
| PART LIST | |
|-----------|-------------|
| ITEM NO. | DESCRIPTION |
| 1 | SHELL |
| 2 | HEX NUT |
| 3 | INSULATOR |
| 4 | LOCK WASHER |

| | | |
|----|-----------------------|----------------------|
| T1 | TOOLS (JAW DIMENSION) | ADVISED TORQUE IN Nm |
| | 21 | 2 |

THE INFORMATION CONTAINED IN THIS DRAWING IS CONFIDENTIAL AND MAY NOT BE DISCLOSED WITHOUT WRITTEN CONSENT FROM SOURIAU USA, INC.

CATALOG NUMBER DESCRIPTION

JBX ER 3 XXXXXDXR



SCALE 2:1

| ORIGIN | COUNTRY | JURISDICTION | CLASSIFICATION |
|--------|---------|--------------|----------------|
| X | FR | Not listed | N/A |
| | US | EAR | ECCN #EAR99 |

These commodities, technology or software are exported from the United States in accordance with the Export Administration Regulations. Diversion contrary to U.S. law is prohibited.

LINEAR MEASURE: mm (INCH)

THIRD ANGLE PROJECTION

TOLERANCES UNLESS OTHERWISE SPECIFIED

| | |
|---------------|--------------|
| No. OF PLACES | mm [INCH] |
| WHOLE No. | ±0.5 [±.02] |
| ONE PLACE | ±0.2 [±.008] |
| TWO PLACES | ±0.1 [±.004] |

ANGLES ±1°

DRAWING TITLE
JBX, SIZE 3, FRONT PANEL MOUNTING RECEPTACLE

CAT NO. **JBXER3**

CAGE NO: 09922 SIZE: C

CUSTOMER

INTERPRET THIS DRAWING IN ACCORDANCE WITH ASME Y14.5M - 1994.

SOURIAU
 WWW.SOURIAU.COM

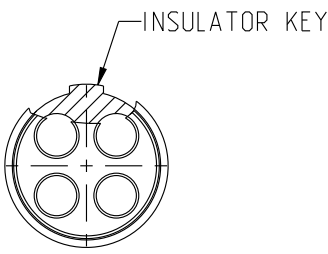
APPROVAL
 DRAWN: TJS 01-07-15
 CHKD: EV 01-07-15
 DSGN: EV 01-07-15
 MFG: DH 01-07-15
 QC: BB 01-07-15
 DRAWING SCALE: 4:1
 DRAWING NO. **JBXER3C**
 REV **A**

1 OF 1

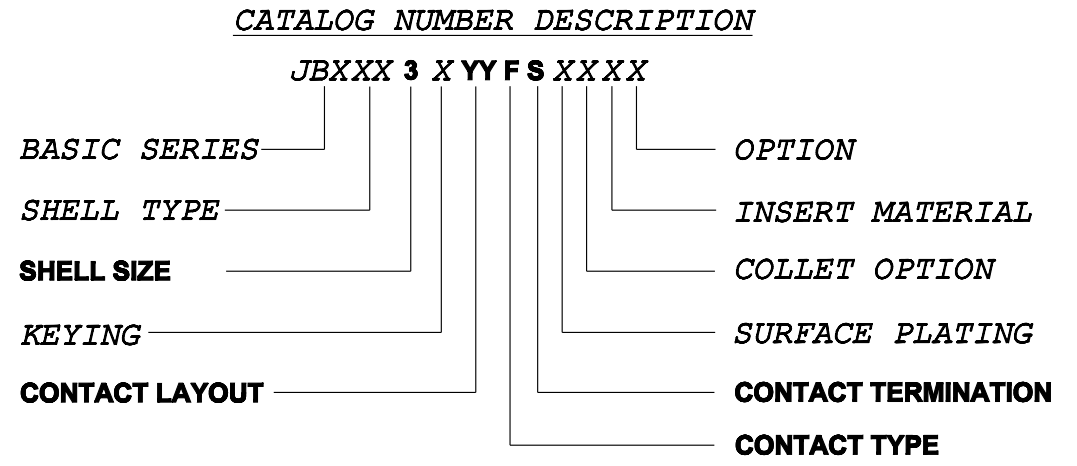
DWG. NO.
JBX3INSFSC

FEMALE INSULATOR, SOLDER CONTACT

| CONTACT LAYOUT | 03 | 04 | 07 | 08 |
|----------------------------|-------------------------|----------|----------|---------|
| FRONT SIDE VIEW | | | | |
| REAR SIDE VIEW | | | | |
| CONTACT | | | | |
| ISO VIEW | | | | |
| CONTACT | ØC | 2 | 1.6 | 1.3 |
| | ØF | 1.9 | 1.5 | 1.1 |
| | MAX. AWG | 16 | 18 | 20 |
| | MAX. CURRENT RATING (A) | 30 | 17 | 15 |
| INSULATOR | CONTACT RESISTANCE (mΩ) | 2.5 | 2.5 | 3 |
| | NUMBER OF CAVITY | 3 | 4 | 7 |
| | MAX. CURRENT RATING | 25 | 15 | 12 |
| | TEST VOLTAGE (Vrms) | 3600 | 2500 | 2200 |
| WORKING VOLTAGE (Vdc/Vrms) | 1600/1200 | 1100/830 | 1000/700 | 830/560 |



CONTACT TYPE : F (FEMALE)
CONTACT TERMINATION : S (SOLDER)
MATERIAL :
 CONTACT: CUPRO-NICKEL
 CLIP: COPPER ALLOY
 INSULATOR: PEEK
FINISH:
 CONTACTS : GOLD



| | | | |
|-----|------------------------|-----------------|----------------|
| B | REVISED PER ECN 12286 | RSK 06-10-15 | EV 06-10-15 |
| A | RELEASED PER ECN 12264 | TJS 03-10-15 | EV 03-10-15 |
| REV | DESCRIPTION | BY DATE | CHKD DATE |

DRAWING TITLE
JBX, SIZE 3, FEMALE INSULATOR, SOLDER CONTACT

CAT NO. **JBX3INSFS**

CAGE NO: 09922 SIZE: B

| | | | | |
|---|------------------------|----------|-------------------|----------|
| CUSTOMER | SOURIAU | APPROVAL | DRAWN: TJS | 02-04-15 |
| | | | CHKD : EV | 02-04-15 |
| INTERPRET THIS DRAWING IN ACCORDANCE WITH ASME Y14.5M - 1994. | WWW.SOURIAU.COM | | DSGN : EV | 02-04-15 |
| | | | MFG : DH | 02-04-15 |
| | | | QC : BB | 02-04-15 |
| | | | DRAWING SCALE: NA | |
| | | | DRAWING NO. | REV |
| | | | JBX3INSFSC | B |
| | | | 1 OF 2 | |

| ORIGIN | COUNTRY | JURISDICTION | CLASSIFICATION |
|--------|---------|--------------|----------------|
| X | FR | Not listed | N/A |
| | US | EAR | ECCN =EAR99 |

These commodities, technology or software are exported from the United States in accordance with the Export Administration Regulations. Diversion contrary to U.S. law is prohibited.

LINEAR MEASURE: $\frac{mm}{INCH}$ mm (INCH)
 THIRD ANGLE PROJECTION

 TOLERANCES UNLESS OTHERWISE SPECIFIED
 No. OF PLACES mm [INCH]
 ONE PLACE ±3 [±.1]
 TWO PLACES ±0.5 [±.02]
 THREE PLACES ±0.25 [±.010]
 ANGLES ±1°

THIS DRAWING IS A CONTROLLED DOCUMENT FOR SOURIAU USA, INC. IT IS SUBJECT TO CHANGE WITHOUT NOTIFICATION. CONTACT THE DOCUMENT CONTROL CENTER FOR THE LATEST REVISION.

THE INFORMATION CONTAINED IN THIS DRAWING IS CONFIDENTIAL AND MAY NOT BE DISCLOSED WITHOUT WRITTEN CONSENT FROM SOURIAU USA, INC.

DWG. NO.
JBX3INSFSC

| CONTACT LAYOUT | 10 | 14 | 18 | 22 | 30 |
|----------------------------|-------------------------|---------|---------|---------|---------|
| FRONT SIDE VIEW | | | | | |
| REAR SIDE VIEW | | | | | |
| CONTACT | | | | | |
| ISO VIEW | | | | | |
| CONTACT | ØC | 1.3 | 0.9 | 0.9 | 0.7 |
| | ØF | 1.1 | 0.8 | 0.8 | 0.81 |
| | MAX. AWG | 20 | 24 | 24 | 22 |
| | MAX. CURRENT RATING (A) | 15 | 10 | 10 | 7 |
| INSULATOR | CONTACT RESISTANCE (mΩ) | 3 | 3.5 | 3.5 | 5 |
| | NUMBER OF CAVITY | 10 | 14 | 18 | 22 |
| | MAX. CURRENT RATING | 12 | 9 | 7 | 5.5 |
| | TEST VOLTAGE (Vrms) | 1400 | 1700 | 1400 | 1200 |
| WORKING VOLTAGE (Vdc/Vrms) | 600/420 | 830/560 | 660/460 | 560/400 | 400/260 |

THIS DRAWING IS A CONTROLLED DOCUMENT FOR SOURIAU USA, INC. IT IS SUBJECT TO CHANGE WITHOUT NOTIFICATION. CONTACT THE DOCUMENT CONTROL CENTER FOR THE LATEST REVISION.

THE INFORMATION CONTAINED IN THIS DRAWING IS CONFIDENTIAL AND MAY NOT BE DISCLOSED WITHOUT WRITTEN CONSENT FROM SOURIAU USA, INC.

B

A

DRAWING TITLE
JBX, SIZE 3, FEMALE INSULATOR, SOLDER CONTACT

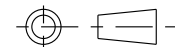
CAT NO. **JBX3INSFS**

CAGE NO: 09922 SIZE: B

| | | | | |
|---|----------------|----------|-------------------|----------|
| CUSTOMER | SOURIAU | APPROVAL | DRAWN: TJS | 02-04-15 |
| | | | CHKD : EV | 02-04-15 |
| INTERPRET THIS DRAWING IN ACCORDANCE WITH ASME Y14.5M - 1994. | | | DSGN : EV | 02-04-15 |
| | | | MFG : DH | 02-04-15 |
| WWW.SOURIAU.COM | | | QC : BB | 02-04-15 |
| | | | DRAWING SCALE: NA | |
| | | | DRAWING NO. | REV |
| | | | JBX3INSFSC | B |
| | | | 2 OF 2 | |

LINEAR MEASURE: $\frac{mm}{INCH}$ mm (INCH)

THIRD ANGLE PROJECTION



TOLERANCES UNLESS OTHERWISE SPECIFIED

| | |
|---------------|---------------|
| No. OF PLACES | mm [INCH] |
| ONE PLACE | ±3 [±.1] |
| TWO PLACES | ±0.5 [±.02] |
| THREE PLACES | ±0.25 [±.010] |
| ANGLES ±1° | |

| ORIGIN | COUNTRY | JURISDICTION | CLASSIFICATION |
|---|---------|--------------|----------------|
| X | FR | Not listed | N/A |
| | US | EAR | ECCN =EAR99 |
| These commodities, technology or software are exported from the United States in accordance with the Export Administration Regulations. Diversion contrary to U.S. law is prohibited. | | | |

Mouser Electronics

Authorized Distributor

Click to View Pricing, Inventory, Delivery & Lifecycle Information:

[Souriau:](#)

[JBXER3G07FSSDSR](#) [JBXER3G03FSSDSR](#) [JBXER3G04FSSDSR](#) [JBXER3G10FSSDSR](#) [JBXER3G14FSSDSR](#)
[JBXER3G18FSSDSR](#) [JBXER3G22FSSDSR](#) [JBXER3G30FSSDSR](#)



Компания «ЭлектроПласт» предлагает заключение долгосрочных отношений при поставках импортных электронных компонентов на взаимовыгодных условиях!

Наши преимущества:

- Оперативные поставки широкого спектра электронных компонентов отечественного и импортного производства напрямую от производителей и с крупнейших мировых складов;
- Поставка более 17-ти миллионов наименований электронных компонентов;
- Поставка сложных, дефицитных, либо снятых с производства позиций;
- Оперативные сроки поставки под заказ (от 5 рабочих дней);
- Экспресс доставка в любую точку России;
- Техническая поддержка проекта, помощь в подборе аналогов, поставка прототипов;
- Система менеджмента качества сертифицирована по Международному стандарту ISO 9001;
- Лицензия ФСБ на осуществление работ с использованием сведений, составляющих государственную тайну;
- Поставка специализированных компонентов (Xilinx, Altera, Analog Devices, Intersil, Interpoint, Microsemi, Aeroflex, Peregrine, Syfer, Eurofarad, Texas Instrument, Miteq, Cobham, E2V, MA-COM, Hittite, Mini-Circuits, General Dynamics и др.);

Помимо этого, одним из направлений компании «ЭлектроПласт» является направление «Источники питания». Мы предлагаем Вам помощь Конструкторского отдела:

- Подбор оптимального решения, техническое обоснование при выборе компонента;
- Подбор аналогов;
- Консультации по применению компонента;
- Поставка образцов и прототипов;
- Техническая поддержка проекта;
- Защита от снятия компонента с производства.



Как с нами связаться

Телефон: 8 (812) 309 58 32 (многоканальный)

Факс: 8 (812) 320-02-42

Электронная почта: org@eplast1.ru

Адрес: 198099, г. Санкт-Петербург, ул. Калинина, дом 2, корпус 4, литера А.