

»» Features



- 20A/25A general purpose Power Relays.
- SPDT, DPDT, TPDT contact configurations.
- DC & AC coils are both available.
- Optional for flange covers, tapped core w/anti-rotation tab, indicator lamp, push-to-test button, PCB terminals
- Comply with RoHS-Directive 2002/95/EC.

»» Type List

◆ Standard Type

| Terminal style | Contact form | Enclosure style | | | | |
|----------------|--------------|-----------------|------------|---------------|------------------|-------------|
| | | Open type | Dust cover | Ears on cover | Antirotation-tab | Ears on top |
| Quick terminal | 1A (SPNO) | 735-1A | 735-1A-C | 735-1A-C1 | 735-1A-C2 | 735-1A-C3 |
| | 1B (SPNC) | 735-1B | 735-1B-C | 735-1B-C1 | 735-1B-C2 | 735-1B-C3 |
| | 1C (SPDT) | 735-1C | 735-1C-C | 735-1C-C1 | 735-1C-C2 | 735-1C-C3 |
| | 2A (DPNO) | 735-2A | 735-2A-C | 735-2A-C1 | 735-2A-C2 | 735-2A-C3 |
| | 2B (DPNC) | 735-2B | 735-2B-C | 735-2B-C1 | 735-2B-C2 | 735-2B-C3 |
| | 2C (DPDT) | 735-2C | 735-2C-C | 735-2C-C1 | 735-2C-C2 | 735-2C-C3 |
| | 3A (TPNO) | 735-3A | 735-3A-C | 735-3A-C1 | 735-3A-C2 | 735-3A-C3 |
| | 3B (TPNC) | 735-3B | 735-3B-C | 735-3B-C1 | 735-3B-C2 | 735-3B-C3 |
| | 3C (TPDT) | 735-3C | 735-3C-C | 735-3C-C1 | 735-3C-C2 | 735-3C-C3 |
| PCB terminal | 1A (SPNO) | ----- | 735-1A-C-T | ----- | ----- | ----- |
| | 1B (SPNC) | ----- | 735-1B-C-T | ----- | ----- | ----- |
| | 1C (SPDT) | ----- | 735-1C-C-T | ----- | ----- | ----- |
| | 2A (DPNO) | ----- | 735-2A-C-T | ----- | ----- | ----- |
| | 2B (DPNC) | ----- | 735-2B-C-T | ----- | ----- | ----- |
| | 2C (DPDT) | ----- | 735-2C-C-T | ----- | ----- | ----- |
| | 3A (TPNO) | ----- | 735-3A-C-T | ----- | ----- | ----- |
| | 3B (TPNC) | ----- | 735-3B-C-T | ----- | ----- | ----- |
| | 3C (TPDT) | ----- | 735-3C-C-T | ----- | ----- | ----- |

◆ High Power Type

| Terminal style | Contact form | Insulation system | Enclosure style | |
|----------------|--------------|-------------------|-----------------|---------------|
| | | | Dust cover | Ears on cover |
| Quick terminal | 1A (SPNO) | F | 735H-1A-F-C | 735H-1A-F-C1 |
| | 1B (SPNC) | | 735H-1B-F-C | 735H-1B-F-C1 |
| | 1C (SPDT) | | 735H-1C-F-C | 735H-1C-F-C1 |
| | 2A (DPNO) | | 735H-2A-F-C | 735H-2A-F-C1 |
| | 2B (DPNC) | | 735H-2B-F-C | 735H-2B-F-C1 |
| | 2C (DPDT) | | 735H-2C-F-C | 735H-2C-F-C1 |

735

»» Ordering Information

735 H - 2C - F - C1 - M
 1 2 3 4 5 6

- | | | | |
|----------|--------------------------------|----------|---------------------------------------------------------|
| 1. 735 | -- Basic series designation | 4. Blank | -- Standard type |
| | | F | -- Class F |
| 2. Blank | -- Standard type | 5. Blank | -- Open type |
| H | -- High power type | C | -- With cover |
| 3. 1A | -- Single pole normally open | C1 | -- With mounting ears on cover |
| 1B | -- Single pole normally closed | C2 | -- With accessible mounting hole with anti-rotation tab |
| 1C | -- Single pole double throw | C3 | -- Mounting ears on top of cover |
| 2A | -- Double pole normally open | 6. Blank | -- No special feature |
| 2B | -- Double pole normally closed | M | -- With manual operator |
| 2C | -- Double pole double throw | T | -- Printed circuit board terminals |
| 3A | -- Three pole normally open | L | -- Pilot lamp |
| 3B | -- Three pole normally closed | | |
| 3C | -- Three pole double throw | | |

»» Contact Rating

| TYPE | 735 | | 735H |
|----------------|-------------------------|--------------------------------|-------------------------|
| | 1A, 1B, 1C, 2A, 2B, 2C | 3A, 3B, 3C | |
| Resistive load | 20A 240VAC 15A 28VDC | 20A 120VAC 15A 240VAC/28VDC | 30A 240VAC 15A 28VDC |

»» Coil Rating (DC)

◆ Standard Type

| | Rated voltage (V) | Rated current ±10 % at 23°C (mA) | Coil resistance ±10 % at 23°C (Ω) | Max. continuous voltage at 50°C | Pick up voltage(Max) at 23°C | Drop out voltage(Min) at 23°C | Power consumption at rated voltage |
|----|-------------------|----------------------------------|-----------------------------------|---------------------------------|------------------------------|-------------------------------|------------------------------------|
| SP | 6 | 188 | 32 | 160 % of rated voltage | 80 % of rated voltage | 10 % of rated voltage | approx. 1.2W |
| | 12 | 100 | 120 | | | | |
| | 24 | 51 | 472 | | | | |
| | 48 | 27 | 1800 | | | | |
| DP | 110 | 11 | 10000 | | | | |
| | 125 | 12.5 | 10000 | | | | |
| TP | 6 | 250 | 24 | | | | approx. 1.5W |
| | 12 | 125 | 96 | | | | |
| | 24 | 63 | 384 | | | | |
| | 48 | 31 | 1536 | | | | |
| | 110 | 11.5 | 9600 | | | | |
| | 125 | 13 | 9600 | | | | |



◆ High Power Type

| Rated voltage (V) | Rated current $\pm 10\%$ at 23°C (mA) | Coil resistance $\pm 10\%$ at 23°C (Ω) | Max. continuous voltage at 55°C | Pick up voltage(Max) at 23°C | Drop out voltage(Min) at 23°C | Power consumption at rated voltage |
|-------------------|---------------------------------------|-------------------------------------------------|---------------------------------|------------------------------|-------------------------------|------------------------------------|
| 6 | 188 | 32 | 160 % of rated voltage | 80 % of rated voltage | 10 % of rated voltage | approx. 1.2W |
| 12 | 100 | 120 | | | | |
| 24 | 51 | 472 | | | | |
| 48 | 27 | 1800 | | | | |
| 110 | 11 | 10000 | | | | |
| 125 | 12.5 | 10000 | | | | |

»» Coil Rating (AC)

◆ Standard Type

| Rated voltage (V) | Coil resistance $\pm 10\%$ at 23°C (Ω) | Max. continuous voltage at 50°C | Pick up voltage(Max) at 23°C | Drop out voltage(Min) at 23°C | Power consumption at rated voltage | |
|-------------------|-------------------------------------------------|---------------------------------|------------------------------|-------------------------------|------------------------------------|---------------|
| SP DP | 6 | 4.2 | 130 % of rated voltage | 85 % of rated voltage | 30 % of rated voltage | approx. 3.0VA |
| | 12 | 18 | | | | |
| | 24 | 72 | | | | |
| | 110 | 1580 | | | | |
| | 120 | 1700 | | | | |
| | 220 | 5850 | | | | |
| TP | 6 | 3.9 | 130 % of rated voltage | 85 % of rated voltage | 30 % of rated voltage | approx. 3.4VA |
| | 12 | 14.5 | | | | |
| | 24 | 64 | | | | |
| | 110 | 1450 | | | | |
| | 120 | 1540 | | | | |
| | 220 | 5850 | | | | |
| 240 | 6750 | | | | | |

◆ High Power Type

| Rated voltage (V) | Coil resistance $\pm 10\%$ at 23°C (Ω) | Max. continuous voltage at 55°C | Pick up voltage(Max) at 23°C | Drop out voltage(Min) at 23°C | Power consumption at rated voltage |
|-------------------|-------------------------------------------------|---------------------------------|------------------------------|-------------------------------|------------------------------------|
| 6 | 4.2 | 130 % of rated voltage | 85 % of rated voltage | 30 % of rated voltage | approx. 3.4VA |
| 12 | 18 | | | | |
| 24 | 72 | | | | |
| 110 | 1580 | | | | |
| 120 | 1700 | | | | |
| 220 | 5850 | | | | |
| 240 | 7200 | | | | |

»» Specification

| | | |
|--------------------------------------|-------------------------------------------------------------------------|-----------------------------------------------------------------------------------|
| Contact material | AgSnO alloy | |
| Contact resistance ⁽¹⁾ | 50 mΩ Max. (for 735) , 100 mΩ Max. (for 735H) | |
| Operate time ⁽¹⁾ | 25 ms Max. | |
| Release time ⁽¹⁾ | 20 ms Max. | |
| Insulation resistance ⁽¹⁾ | 1000 MΩ Min. (DC 500V) | |
| Dielectric strength ⁽¹⁾ | Between open contact | : AC 1000V, 50/60Hz 1 min. (for 735) : AC 1500V, 50/60Hz 1 min. (for 735H) |
| | Between contact and coil | : AC 1600V, 50/60Hz 1 min. (for 735) : AC 3000V, 50/60Hz 1 min. (for 735H) |
| | Between contact circuits | : AC 1600V, 50/60Hz 1 min. (for 735) : AC 3000V, 50/60Hz 1 min. (for 735H) |
| Vibration resistance | Operating extremes | 10~55Hz, amplitude 2.0 mm |
| | Damage limits | 10~55Hz, amplitude 2.0 mm |
| Shock resistance | Operating extremes | 10G |
| | Damage limits | 100G |
| Life expectancy | Mechanical | 10,000,000 operations (frequency 18,000 ops./hr) |
| | Electrical | 100,000 operations (frequency 1,200 ops./hr) (for 735) |
| | | NO: 30,000 operations NC: 10,000 operations (frequency 360 ops./hr) (for 735H) |
| Operating ambient temperature | -30~+50°C (no freezing) (for 735) -30~+55°C (no freezing) (for 735H) | |
| Weight | Approx. 80 g | |

Note : (1) initial value

»» Safety Approval

| Certified | 735 | | | 735H |
|-----------|--------|---------|-------|----------|
| | UL | CSA | FIMKO | UL / CUL |
| File No. | E88991 | 1664125 | 14426 | E88991 |

»» Safety Approval Rating (FIMKO)

| 735 1A, 1B, 1C | 735 2A, 2B, 2C | 735 3A, 3B, 3C |
|----------------|----------------|----------------|
| 25A 250VAC | 25A 250VAC | 20A 250VAC |

»» Safety Approval Rating(UL、CSA)

| UL | | | CSA | | |
|----------------|----------------|----------------|----------------|----------------|----------------|
| 735 1A, 1B, 1C | 735 2A, 2B, 2C | 735 3A, 3B, 3C | 735 1A, 1B, 1C | 735 2A, 2B, 2C | 735 3A, 3B, 3C |
| 25A 28VDC | 20A 28VDC | 15A 28VDC | 30A 277VAC | 25A 277VAC | 20A 277VAC |
| 25A 277VAC | 25A 277VAC | 20A 277VAC | 10A 600VAC | 10A 600VAC | 15A 28VDC |
| 10A 600VAC | 10A 600VAC | 3/4HP 120VAC | 25A 28VDC | 20A 28VDC | 3/4HP 120VAC |
| 1.5HP 240VAC | 1.5HP 240VAC | 1HP 240VAC | 1.5HP 240VAC | 1.5HP 240VAC | 1HP 240VAC |
| 1HP 120VAC | 1HP 120VAC | | 1HP 120VAC | 1HP 120VAC | |

| UL / CUL | |
|-----------------|-----------------|
| 735H 1A, 1B, 1C | 735H 2A, 2B, 2C |
| 30A 277VAC | 30A 277VAC |
| 25A 28VDC | 20A 28VDC |
| 10A 600VAC | 10A 600VAC |
| 1.5HP 240VAC | 1.5HP 240VAC |
| 1HP 120VAC | 1HP 120VAC |

»» Outline Dimensions

◆ 735 C



◆ 735 C1



◆ 735 C2



735

◆ 735 C3



◆ 735 M



◆ 735 T



»» Wiring Diagram
BOTTOM VIEW

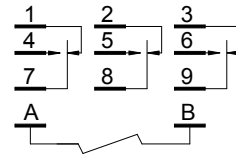
1C



2C



3C



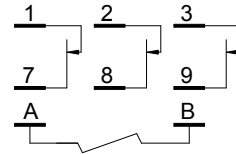
1B



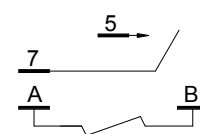
2B



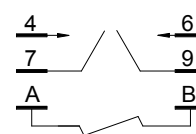
3B



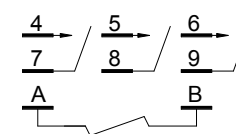
1A



2A

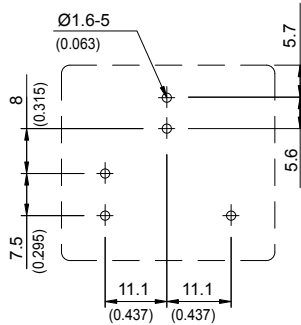


3A



»» PC Board Layout BOTTOM VIEW

1P



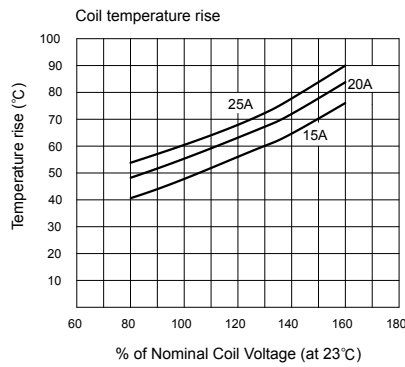
2P



3P



»» Engineering Data





Компания «ЭлектроПласт» предлагает заключение долгосрочных отношений при поставках импортных электронных компонентов на взаимовыгодных условиях!

Наши преимущества:

- Оперативные поставки широкого спектра электронных компонентов отечественного и импортного производства напрямую от производителей и с крупнейших мировых складов;
- Поставка более 17-ти миллионов наименований электронных компонентов;
- Поставка сложных, дефицитных, либо снятых с производства позиций;
- Оперативные сроки поставки под заказ (от 5 рабочих дней);
- Экспресс доставка в любую точку России;
- Техническая поддержка проекта, помощь в подборе аналогов, поставка прототипов;
- Система менеджмента качества сертифицирована по Международному стандарту ISO 9001;
- Лицензия ФСБ на осуществление работ с использованием сведений, составляющих государственную тайну;
- Поставка специализированных компонентов (Xilinx, Altera, Analog Devices, Intersil, Interpoint, Microsemi, Aeroflex, Peregrine, Syfer, Eurofarad, Texas Instrument, Miteq, Cobham, E2V, MA-COM, Hittite, Mini-Circuits, General Dynamics и др.);

Помимо этого, одним из направлений компании «ЭлектроПласт» является направление «Источники питания». Мы предлагаем Вам помощь Конструкторского отдела:

- Подбор оптимального решения, техническое обоснование при выборе компонента;
- Подбор аналогов;
- Консультации по применению компонента;
- Поставка образцов и прототипов;
- Техническая поддержка проекта;
- Защита от снятия компонента с производства.



Как с нами связаться

Телефон: 8 (812) 309 58 32 (многоканальный)

Факс: 8 (812) 320-02-42

Электронная почта: org@eplast1.ru

Адрес: 198099, г. Санкт-Петербург, ул. Калинина, дом 2, корпус 4, литера А.