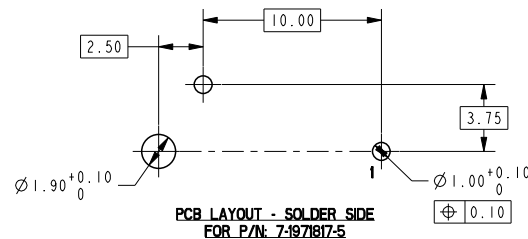
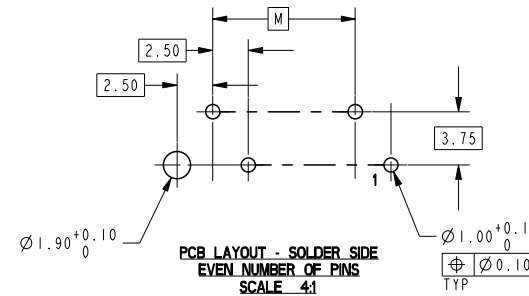
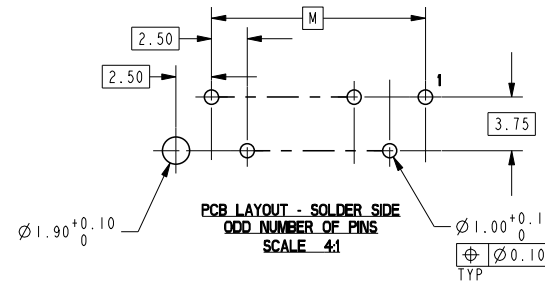
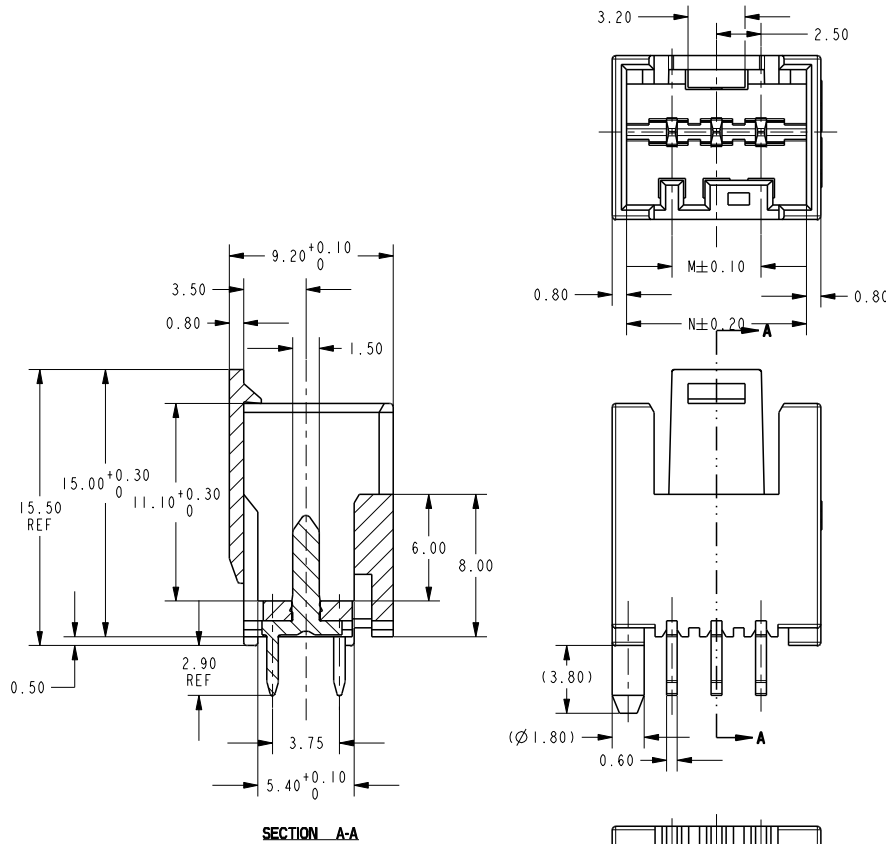
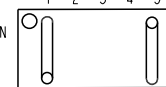


THIS DRAWING IS UNPUBLISHED. RELEASED FOR PUBLICATION 20  
 © COPYRIGHT 20 BY - ALL RIGHTS RESERVED.

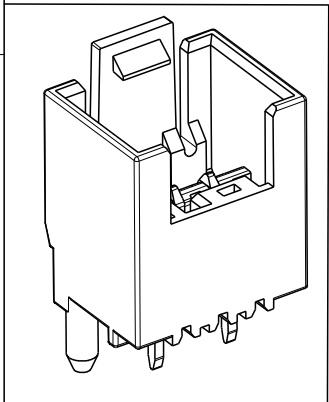
| LOC |     | DIST          |           | REVISIONS |      |  |  |
|-----|-----|---------------|-----------|-----------|------|--|--|
| P   | LYR | DESCRIPTION   | DATE      | DWN       | APVD |  |  |
| ES  | 00  |               |           |           |      |  |  |
|     | A7  | ECR-15-010757 | 20JUL2015 | SL        | RR   |  |  |
|     | A8  | ECR-17-010693 | 24JUL2017 | WW        | RR   |  |  |

**NOTE**

- SEE SHEET 4 FOR AVAILABLE CONFIGURATIONS
- MATERIAL: HOUSING, NYLON, UL94 V0, 750°C GWT NO FLAME  
EIGHT COLORS AVAILABLE, INCLUDING: NATURAL, RED, BLUE, YELLOW, BLACK, GREY, GREEN, PURPLE  
WHITE VERSION IS PRELIMINARY  
CONTACT, COPPER ALLOY, 0.60MM THICK
- FINISH: OPTION 1: TIN PLATING OVER NICKEL UNDERPLATING  
OPTION 2: AG PLATING OVER NICKEL UNDERPLATING
- PCB LAYOUT AS SHOWN
- △ THE PART NUMBERS SHOWING IN SHEET 2 & 3 & 4 ARE FOR NATURAL COLOR. THE PART NUMBER FOR OTHER COLOR ARE BASED ON THE NATURAL ONE: FOR THE SAME CONFIGURATION, THE PREFIX AND POSTFIX OF THE P/N ARE THE SAME, ONLY THE BASE NUMBER IS DIFFERENT ACCORDING TO DIFFERENT COLOR, DETAIL PLEASE SEE SHEET 5
- PACKAGING: LOOSE PIECE OR TUBE. THE PART NUMBERS IN THIS DRAWING ARE WITH LOOSE PIECE PACKAGING. PLEASE CONTACT TE SALES REPRESENTATIVES FOR TUBE PACKAGING REQUIREMENT.
- △ FOR PN 7-1971817-5 PIN LAYOUT AS FOLLOW
- △ PRELIMINARY PART NOT RELEASED FOR PRODUCTION



| N     | M     | NO. OF PIS. |
|-------|-------|-------------|
| 40.10 | 35.00 | 15          |
| 37.60 | 32.50 | 14          |
| 35.10 | 30.00 | 13          |
| 32.60 | 27.50 | 12          |
| 30.10 | 25.00 | 11          |
| 27.60 | 22.50 | 10          |
| 25.10 | 20.00 | 9           |
| 22.60 | 17.50 | 8           |
| 20.10 | 15.00 | 7           |
| 17.60 | 12.50 | 6           |
| 15.10 | 10.00 | 5           |
| 12.60 | 7.50  | 4           |
| 10.10 | 5.00  | 3           |



THIS DRAWING IS A CONTROLLED DOCUMENT.

DWN: WINTER WANG 12NOV2012  
 CHK: HAPYE WU 12NOV2012  
 APVD: YI HONG MAO 12NOV2012

TE Connectivity  
**TE**  
 NAME: RAST 2.5 TAB HEADER ASSY TH, VERTICAL, EXTERNAL LOCKING  
 PRODUCT SPEC: 108-106079  
 APPLICATION SPEC: -

DIMENSIONS: (mm)  
 TOLERANCES UNLESS OTHERWISE SPECIFIED:  
 0 PLC ±  
 1 PLC ±  
 2 PLC ±0.20  
 3 PLC ±  
 4 PLC ±  
 ANGLES FINISH

MATERIAL: -  
 WEIGHT: -  
 CUSTOMER DRAWING

SIZE: A2  
 CAGE CODE: 00779  
 DRAWING NO: ©=1971817  
 RESTRICTED TO: -

SCALE: 5:1  
 SHEET: 1 of 5  
 REV: A8

4

3

2

1

THIS DRAWING IS UNPUBLISHED. RELEASED FOR PUBLICATION 20  
 © COPYRIGHT 20 BY - ALL RIGHTS RESERVED.

| LOC | DIST | REVISIONS |     |             |      |     |      |
|-----|------|-----------|-----|-------------|------|-----|------|
| ES  | 00   | P         | LYR | DESCRIPTION | DATE | DWN | APVD |
|     |      |           |     |             |      |     |      |

| QTY | TAB CONTACT                      | QTY | HOUSING   | POS. | TE PART NO. | QTY                              | TAB CONTACT | QTY   | HOUSING | POS.        | TE PART NO. |             |
|-----|----------------------------------|-----|---|------|-------------|----------------------------------|-------------|---|---------|-------------|-------------|-------------|
| 15  | TAB CONTACT<br>w/ SILVER PLATING | I   | RAST 2.5 TAB HEADER HOUSING,<br>EXTERNAL LOCKING, 15P<br>(SEE THE DETAIL LAYOUT ON SHEET 4) | 15   | 3-1971838-5 | TAB CONTACT<br>w/ SILVER PLATING | I           | RAST 2.5 TAB HEADER HOUSING,<br>EXTERNAL LOCKING, 10P<br>(SEE THE DETAIL LAYOUT ON SHEET 4) | 10      | 3-1971837-0 | 3-1971837-0 |             |
| 9   |                                  | I   | RAST 2.5 TAB HEADER HOUSING,<br>EXTERNAL LOCKING, 14P<br>(SEE THE DETAIL LAYOUT ON SHEET 4) | 14   | 2-1971838-4 |                                  | I           | RAST 2.5 TAB HEADER HOUSING,<br>EXTERNAL LOCKING, 9P<br>(SEE THE DETAIL LAYOUT ON SHEET 4)  | 9       | 2-1971837-0 | 2-1971837-0 | 2-1971837-0 |
| 14  |                                  | I   | RAST 2.5 TAB HEADER HOUSING,<br>EXTERNAL LOCKING, 13P<br>(SEE THE DETAIL LAYOUT ON SHEET 4) | 13   | 1-1971838-4 |                                  | I           | RAST 2.5 TAB HEADER HOUSING,<br>EXTERNAL LOCKING, 8P<br>(SEE THE DETAIL LAYOUT ON SHEET 4)  | 8       | 1-1971837-0 | 1-1971837-0 | 1-1971837-0 |
| 13  |                                  | I   | RAST 2.5 TAB HEADER HOUSING,<br>EXTERNAL LOCKING, 12P<br>(SEE THE DETAIL LAYOUT ON SHEET 4) | 12   | 1-1971838-3 |                                  | I           | RAST 2.5 TAB HEADER HOUSING,<br>EXTERNAL LOCKING, 7P<br>(SEE THE DETAIL LAYOUT ON SHEET 4)  | 7       | 7-1971837-9 | 7-1971837-9 | 7-1971837-9 |
| 8   |                                  | I   | RAST 2.5 TAB HEADER HOUSING,<br>EXTERNAL LOCKING, 11P<br>(SEE THE DETAIL LAYOUT ON SHEET 4) | 11   | 2-1971838-2 |                                  | I           | RAST 2.5 TAB HEADER HOUSING,<br>EXTERNAL LOCKING, 6P<br>(SEE THE DETAIL LAYOUT ON SHEET 4)  | 6       | 6-1971837-9 | 6-1971837-9 | 6-1971837-9 |
| 12  |                                  | I   | RAST 2.5 TAB HEADER HOUSING,<br>EXTERNAL LOCKING, 10P<br>(SEE THE DETAIL LAYOUT ON SHEET 4) | 10   | 1-1971838-2 |                                  | I           | RAST 2.5 TAB HEADER HOUSING,<br>EXTERNAL LOCKING, 5P<br>(SEE THE DETAIL LAYOUT ON SHEET 4)  | 5       | 5-1971837-9 | 5-1971837-9 | 5-1971837-9 |
| 11  |                                  | I   | RAST 2.5 TAB HEADER HOUSING,<br>EXTERNAL LOCKING, 9P<br>(SEE THE DETAIL LAYOUT ON SHEET 4)  | 9    | 2-1971838-1 |                                  | I           | RAST 2.5 TAB HEADER HOUSING,<br>EXTERNAL LOCKING, 4P<br>(SEE THE DETAIL LAYOUT ON SHEET 4)  | 4       | 4-1971837-9 | 4-1971837-9 | 4-1971837-9 |
| 10  |                                  |     |   |      |             |                                  |             |   |         |             |             |             |
| 9   |                                  |     |   |      |             |                                  |             |   |         |             |             |             |
| 6   |                                  |     |   |      |             |                                  |             |   |         |             |             |             |
| 9   |                                  |     |   |      |             |                                  |             |   |         |             |             |             |
| 8   |                                  |     |   |      |             |                                  |             |   |         |             |             |             |
| 6   |                                  |     |   |      |             |                                  |             |   |         |             |             |             |
| 7   |                                  |     |   |      |             |                                  |             |   |         |             |             |             |
| 6   |                                  |     |   |      |             |                                  |             |   |         |             |             |             |
| 5   |                                  |     |   |      |             |                                  |             |   |         |             |             |             |
| 4   |                                  |     |   |      |             |                                  |             |   |         |             |             |             |
| 3   |                                  |     |   |      |             |                                  |             |   |         |             |             |             |
| 2   |                                  |     |   |      |             |                                  |             |   |         |             |             |             |
| 1   |                                  |     |   |      |             |                                  |             |   |         |             |             |             |

|    |                                  |   |   |    |             |
|----|----------------------------------|---|---|----|-------------|
| 15 | TAB CONTACT<br>w/ SILVER PLATING | I | RAST 2.5 TAB HEADER HOUSING,<br>EXTERNAL LOCKING, 15P<br>(SEE THE DETAIL LAYOUT ON SHEET 4) | 15 | 3-1971838-5 |
| 9  |                                  | I | RAST 2.5 TAB HEADER HOUSING,<br>EXTERNAL LOCKING, 14P<br>(SEE THE DETAIL LAYOUT ON SHEET 4) | 14 | 2-1971838-4 |
| 14 |                                  | I | RAST 2.5 TAB HEADER HOUSING,<br>EXTERNAL LOCKING, 13P<br>(SEE THE DETAIL LAYOUT ON SHEET 4) | 13 | 1-1971838-4 |
| 13 |                                  | I | RAST 2.5 TAB HEADER HOUSING,<br>EXTERNAL LOCKING, 12P<br>(SEE THE DETAIL LAYOUT ON SHEET 4) | 12 | 1-1971838-3 |
| 8  |                                  | I | RAST 2.5 TAB HEADER HOUSING,<br>EXTERNAL LOCKING, 11P<br>(SEE THE DETAIL LAYOUT ON SHEET 4) | 11 | 2-1971838-2 |
| 12 |                                  | I | RAST 2.5 TAB HEADER HOUSING,<br>EXTERNAL LOCKING, 10P<br>(SEE THE DETAIL LAYOUT ON SHEET 4) | 10 | 1-1971838-2 |
| 11 |                                  | I | RAST 2.5 TAB HEADER HOUSING,<br>EXTERNAL LOCKING, 9P<br>(SEE THE DETAIL LAYOUT ON SHEET 4)  | 9  | 2-1971838-1 |
| 10 |                                  |   |   |    |             |
| 9  |                                  |   |   |    |             |
| 6  |                                  |   |   |    |             |
| 9  |                                  |   |   |    |             |
| 8  |                                  |   |   |    |             |
| 6  |                                  |   |   |    |             |
| 7  |                                  |   |   |    |             |
| 6  |                                  |   |   |    |             |
| 5  |                                  |   |   |    |             |
| 4  |                                  |   |   |    |             |
| 3  |                                  |   |   |    |             |
| 2  |                                  |   |   |    |             |
| 1  |                                  |   |   |    |             |

THIS DRAWING IS A CONTROLLED DOCUMENT. DWN: WINTER WANG 12NOV2012  
 CHK: HAPYE WU 12NOV2012  
 APVD: YIYHONG MAO 12NOV2012

TE Connectivity

NAME: RAST 2.5 TAB HEADER ASSY TH, VERTICAL, EXTERNAL LOCKING

SIZE: A2 CAGE CODE: 00779 DRAWING NO: 1971817

RESTRICTED TO: -

CUSTOMER DRAWING SCALE: NTS SHEET: 2 OF 5 REV: A8

TOLERANCES UNLESS OTHERWISE SPECIFIED:  
 0 PLC ±  
 1 PLC ±  
 2 PLC ±0.20  
 3 PLC ±  
 4 PLC ±  
 ANGLES ±°

4

3

2

1

THIS DRAWING IS UNPUBLISHED. RELEASED FOR PUBLICATION 20  
 © COPYRIGHT 20 BY - ALL RIGHTS RESERVED.

| LOC |     | DIST        |  | REVISIONS |     |      |  |
|-----|-----|-------------|--|-----------|-----|------|--|
| P   | LYR | DESCRIPTION |  | DATE      | DWN | APVD |  |
| ES  | 00  |             |  |           |     |      |  |

| QTY | TAB CONTACT                   | QTY | HOUSING   | POS. | TE PART NO                                |
|-----|-------------------------------|-----|---|------|---|
| 15  | TAB CONTACT<br>w/ TIN PLATING | I   | RAST 2.5 TAB HEADER HOUSING,<br>EXTERNAL LOCKING, 15P<br>(SEE THE DETAIL LAYOUT ON SHEET 4) | 15   | 3-1971818-5<br>2-1971818-5<br>1-1971818-5 |
| 9   |                               | I   | RAST 2.5 TAB HEADER HOUSING,<br>EXTERNAL LOCKING, 14P<br>(SEE THE DETAIL LAYOUT ON SHEET 4) | 14   | 2-1971818-4                               |
| 14  |                               | I   | RAST 2.5 TAB HEADER HOUSING,<br>EXTERNAL LOCKING, 14P<br>(SEE THE DETAIL LAYOUT ON SHEET 4) | 14   | 1-1971818-4                               |
| 13  |                               | I   | RAST 2.5 TAB HEADER HOUSING,<br>EXTERNAL LOCKING, 13P<br>(SEE THE DETAIL LAYOUT ON SHEET 4) | 13   | 1-1971818-3                               |
| 8   |                               | I   | RAST 2.5 TAB HEADER HOUSING,<br>EXTERNAL LOCKING, 12P<br>(SEE THE DETAIL LAYOUT ON SHEET 4) | 12   | 2-1971818-2<br>1-1971818-2                |
| 12  |                               | I   | RAST 2.5 TAB HEADER HOUSING,<br>EXTERNAL LOCKING, 12P<br>(SEE THE DETAIL LAYOUT ON SHEET 4) | 12   | 1-1971818-2                               |
| 11  |                               | I   | RAST 2.5 TAB HEADER HOUSING,<br>EXTERNAL LOCKING, 11P<br>(SEE THE DETAIL LAYOUT ON SHEET 4) | 11   | 2-1971818-1<br>1-1971818-1                |

| QTY | TAB CONTACT                   | QTY | HOUSING   | POS. | TE PART NO   |
|-----|-------------------------------|-----|---|------|--|
| 10  | TAB CONTACT<br>w/ TIN PLATING | I   | RAST 2.5 TAB HEADER HOUSING,<br>EXTERNAL LOCKING, 10P<br>(SEE THE DETAIL LAYOUT ON SHEET 4) | 10   | 3-1971817-0<br>2-1971817-0<br>1-1971817-0  |
| 9   |                               | I   | RAST 2.5 TAB HEADER HOUSING,<br>EXTERNAL LOCKING, 9P<br>(SEE THE DETAIL LAYOUT ON SHEET 4)  | 9    | 7-1971817-9<br>6-1971817-9<br>5-1971817-9<br>4-1971817-9<br>3-1971817-9<br>2-1971817-9<br>1-1971817-9  |
| 6   |                               | I   | RAST 2.5 TAB HEADER HOUSING,<br>EXTERNAL LOCKING, 8P<br>(SEE THE DETAIL LAYOUT ON SHEET 4)  | 8    | 5-1971817-8<br>4-1971817-8<br>3-1971817-8<br>2-1971817-8<br>1-1971817-8  |
| 9   |                               | I   | RAST 2.5 TAB HEADER HOUSING,<br>EXTERNAL LOCKING, 8P<br>(SEE THE DETAIL LAYOUT ON SHEET 4)  | 8    | 7-1971817-7<br>6-1971817-7<br>5-1971817-7<br>4-1971817-7<br>3-1971817-7<br>2-1971817-7<br>1-1971817-7  |
| 8   |                               | I   | RAST 2.5 TAB HEADER HOUSING,<br>EXTERNAL LOCKING, 8P<br>(SEE THE DETAIL LAYOUT ON SHEET 4)  | 8    | 4-1971817-6<br>3-1971817-6<br>2-1971817-6<br>1-1971817-6   |
| 6   |                               | I   | RAST 2.5 TAB HEADER HOUSING,<br>EXTERNAL LOCKING, 6P<br>(SEE THE DETAIL LAYOUT ON SHEET 4)  | 6    | 7-1971817-5<br>6-1971817-5<br>4-1971817-5<br>3-1971817-5<br>2-1971817-5<br>1-1971817-5   |
| 7   |                               | I   | RAST 2.5 TAB HEADER HOUSING,<br>EXTERNAL LOCKING, 7P<br>(SEE THE DETAIL LAYOUT ON SHEET 4)  | 7    | 7-1971817-4<br>6-1971817-4<br>5-1971817-4<br>4-1971817-4<br>3-1971817-4<br>2-1971817-4<br>1-1971817-4  |
| 6   |                               | I   | RAST 2.5 TAB HEADER HOUSING,<br>EXTERNAL LOCKING, 6P<br>(SEE THE DETAIL LAYOUT ON SHEET 4)  | 6    | 1971817-3<br>9-1971817-3<br>8-1971817-3<br>7-1971817-3<br>6-1971817-3<br>5-1971817-3<br>4-1971817-3<br>3-1971817-3<br>2-1971817-3<br>1-1971817-3 |
| 2   |                               | I   | RAST 2.5 TAB HEADER HOUSING,<br>EXTERNAL LOCKING, 5P<br>(SEE THE DETAIL LAYOUT ON SHEET 4)  | 5    |  |
| 5   |                               | I   | RAST 2.5 TAB HEADER HOUSING,<br>EXTERNAL LOCKING, 5P<br>(SEE THE DETAIL LAYOUT ON SHEET 4)  | 5    |  |
| 4   |                               | I   | RAST 2.5 TAB HEADER HOUSING,<br>EXTERNAL LOCKING, 4P<br>(SEE THE DETAIL LAYOUT ON SHEET 4)  | 4    |  |
| 3   |                               | I   | RAST 2.5 TAB HEADER HOUSING,<br>EXTERNAL LOCKING, 3P<br>(SEE THE DETAIL LAYOUT ON SHEET 4)  | 3    |  |

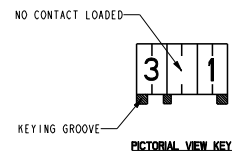
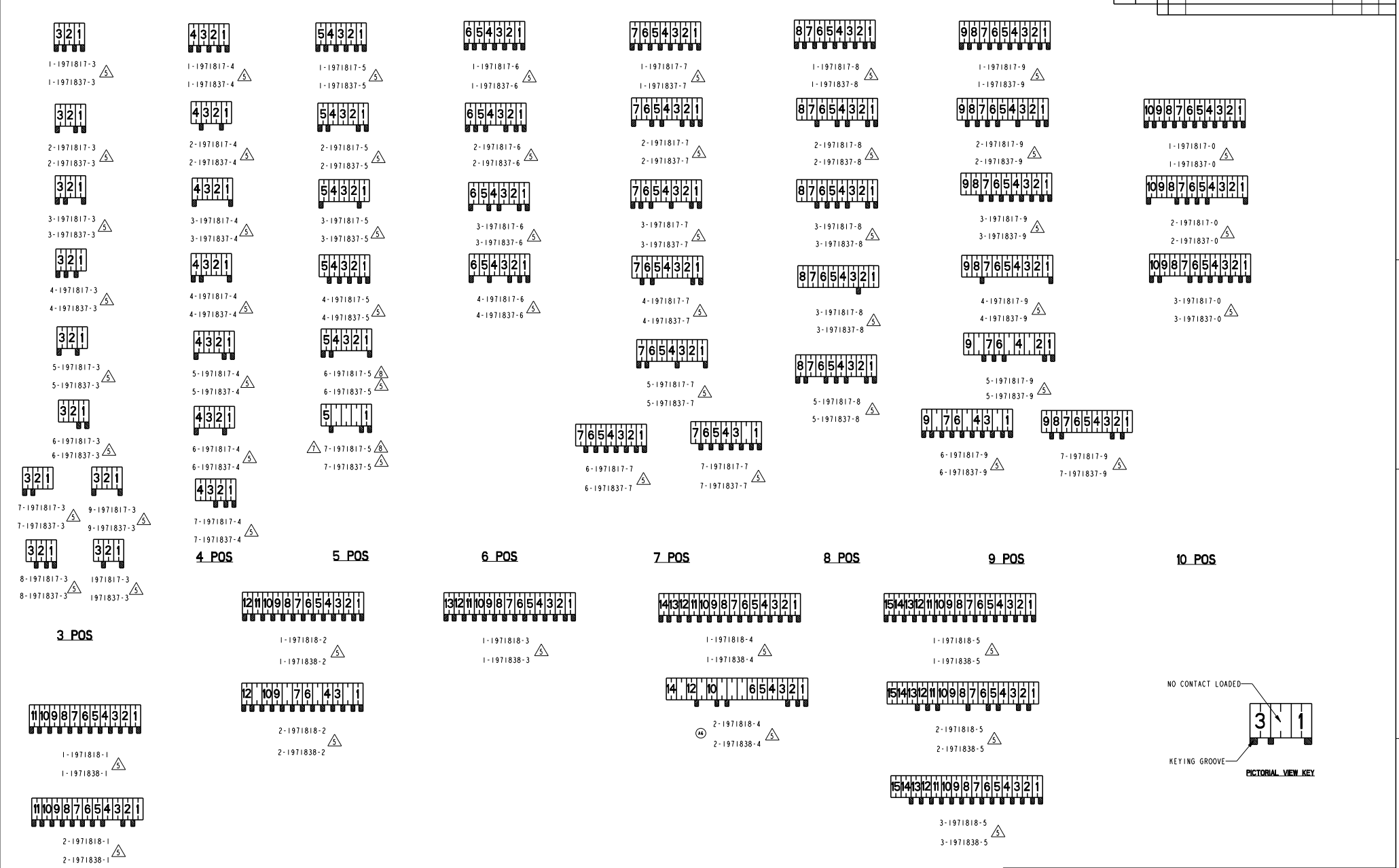
THIS DRAWING IS A CONTROLLED DOCUMENT. DWG: WINTER WANG 12NOV2012  
 CHK: HAPYE WU 12NOV2012  
 APVD: YI HONG MAO 12NOV2012

TE Connectivity  
**RAST 2.5 TAB HEADER ASSY TH, VERTICAL, EXTERNAL LOCKING**

NAME: YI HONG MAO  
 PRODUCT SPEC: -  
 APPLICATION SPEC: -  
 WEIGHT: -  
 CUSTOMER DRAWING

SIZE: A2  
 CAGE CODE: 00779  
 DRAWING NO: ©=1971817  
 RESTRICTED TO: -

SCALE: NTS  
 SHEET: 3 OF 5  
 REV: A8



|  |  |                 |                 |         |
|--|--|-----------------|-----------------|---------|
| THIS DRAWING IS A CONTROLLED DOCUMENT. |  | DATE: 22NOV2012 | BY: WINTER WANG | REV: 1  |
| DIMENSIONAL SPECIFICATIONS:            |  | DATE: 22NOV2012 | BY: HAPYE WU    | REV: 1  |
| MATERIAL:                              |  | DATE: 22NOV2012 | BY: YUJONG MAO  | REV: 1  |
| FINISH:                                |  | DATE:           | BY:             | REV:    |
| HEIGHT:                                |  | DATE:           | BY:             | REV:    |
| CUSTOMER DRAWING                       |  | SCALE: 5:1      | SHEET: 4 OF 5   | REV: A8 |

4

3

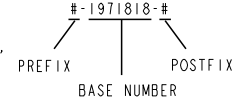
2

1

THIS DRAWING IS UNPUBLISHED. RELEASED FOR PUBLICATION 20  
 © COPYRIGHT 20 BY - ALL RIGHTS RESERVED.

| LOC | DIST | REVISIONS |     |             |      |     |      |
|-----|------|-----------|-----|-------------|------|-----|------|
| ES  | 00   | P         | LYR | DESCRIPTION | DATE | DWN | APVD |
|     |      |           |     |             |      |     |      |

FOR ANY KEYING CONFIGURATION, THERE ARE EIGHT COLORS AVAILABLE, BESIDES THE NATURAL COLOR, THERE ARE OTHER SEVEN COLORS, INCLUDE: YELLOW, BLUE, GREY, PURPLE, RED, GREEN, BLACK. THE WHITE VERSION IS PRELIMINARY. THE P/N OF THE COLOR CONNECTOR ARE BASED ON THE NATURAL CONNECTOR, THE PREFIX AND POSTFIX ARE THE SAME FOR THE SAME KEYING CONFIGURATION, BUT THE BASE NUMBERS ARE DIFFERENT ACCORDING TO DIFFERENT COLOR. THE FOLLOWING SHOWS WHAT'S THE P/N FOR COLOR CONNECTOR



| COLOR   | PART NUMBER OF THE CONNECTOR |             |                         |             | COMMENTS  |
|---------|------------------------------|-------------|-------------------------|-------------|---|
|         | WITH TIN PLATING CONTACT     |             | WITH AG PLATING CONTACT |             |   |
| NATURAL | #-1971817-#                  | #-1971818-# | #-1971837-#             | #-1971838-# | THE DETAIL P/N FOR DIFFERENT KEYING SEE SHEET 2 & 3 & 4   |
| RED     | #-1971938-#                  | #-1971939-# | #-2232141-#             | #-2232142-# | THE PREFIX AND POSTFIX ARE THE SAME WITH THE P/N OF THE NATURAL CONNECTOR FOR THE SAME KEYING CONFIGURATION, JUST THE BASE NUMBERS ARE DIFFERENT BASED ON DIFFERENT COLOR. # CAN BE THE NUMBER FROM 0 TO 9. |
| BLUE    | #-2232143-#                  | #-2232144-# | #-2232145-#             | #-2232146-# |   |
| YELLOW  | #-2232147-#                  | #-2232148-# | #-2232149-#             | #-2232150-# |   |
| BLACK   | #-1971994-#                  | #-1971995-# | #-2232151-#             | #-2232152-# |   |
| GREY    | #-1971976-#                  | #-1971977-# | #-2232153-#             | #-2232154-# |   |
| GREEN   | #-1971988-#                  | #-1971989-# | #-2232155-#             | #-2232156-# |   |
| PURPLE  | #-2232157-#                  | #-2232158-# | #-2232159-#             | #-2232160-# |   |
| WHITE   | #-2232277-#                  | #-2232278-# | #-2232279-#             | #-2232280-# |   |

FOR EXAMPLE, IF A CONNECTOR WITH THE CONFIGURATION AS BELOW, AND WITH TIN PLATING CONTACT, IN THE SHEET 4, WE CAN FIND THE RELATED CONNECTOR P/N WITH NATURAL COLOR IS 5-1971817-4, THEN WE CAN LOOK IN THE ABOVE TABLE TO FIND THE CONNECTOR P/N WITH RED COLOR IS 5-1971938-4



|   |  |                            |   |
|---|--|----------------------------|---|
| THIS DRAWING IS A CONTROLLED DOCUMENT.  |  | DWN: WINTER WANG 12NOV2012 | TE Connectivity   |
| DIMENSIONS: (mm)  |  | CHK: HAPYE WU 12NOV2012    |   |
| TOLERANCES UNLESS OTHERWISE SPECIFIED:  |  | APVD: YIHONG MAO 12NOV2012 | NAME: RAST 2.5 TAB HEADER ASSY TH, VERTICAL, EXTERNAL LOCKING |
| 0 PLC ±-<br>1 PLC ±-<br>2 PLC ±0.20<br>3 PLC ±-<br>4 PLC ±-<br>ANGLES ±1°<br>FINISH |  | PRODUCT SPEC: 108-106079   | SIZE: A2  |
| MATERIAL: -   |  | APPLICATION SPEC: -        | CAGE CODE: 00779  |
|   |  | WEIGHT: -                  | DRAWING NO: ©=1971817   |
|   |  | CUSTOMER DRAWING           | RESTRICTED TO: -  |
|   |  | SCALE: NTS                 | SHEET 5 OF 5  |
|   |  |                            | REV: A8   |



Компания «ЭлектроПласт» предлагает заключение долгосрочных отношений при поставках импортных электронных компонентов на взаимовыгодных условиях!

Наши преимущества:

- Оперативные поставки широкого спектра электронных компонентов отечественного и импортного производства напрямую от производителей и с крупнейших мировых складов;
- Поставка более 17-ти миллионов наименований электронных компонентов;
- Поставка сложных, дефицитных, либо снятых с производства позиций;
- Оперативные сроки поставки под заказ (от 5 рабочих дней);
- Экспресс доставка в любую точку России;
- Техническая поддержка проекта, помощь в подборе аналогов, поставка прототипов;
- Система менеджмента качества сертифицирована по Международному стандарту ISO 9001;
- Лицензия ФСБ на осуществление работ с использованием сведений, составляющих государственную тайну;
- Поставка специализированных компонентов (Xilinx, Altera, Analog Devices, Intersil, Interpoint, Microsemi, Aeroflex, Peregrine, Syfer, Eurofarad, Texas Instrument, Miteq, Cobham, E2V, MA-COM, Hittite, Mini-Circuits, General Dynamics и др.);

Помимо этого, одним из направлений компании «ЭлектроПласт» является направление «Источники питания». Мы предлагаем Вам помощь Конструкторского отдела:

- Подбор оптимального решения, техническое обоснование при выборе компонента;
- Подбор аналогов;
- Консультации по применению компонента;
- Поставка образцов и прототипов;
- Техническая поддержка проекта;
- Защита от снятия компонента с производства.



#### Как с нами связаться

**Телефон:** 8 (812) 309 58 32 (многоканальный)

**Факс:** 8 (812) 320-02-42

**Электронная почта:** [org@eplast1.ru](mailto:org@eplast1.ru)

**Адрес:** 198099, г. Санкт-Петербург, ул. Калинина, дом 2, корпус 4, литера А.