



MULTI FUNCTION MIMO ANTENNA

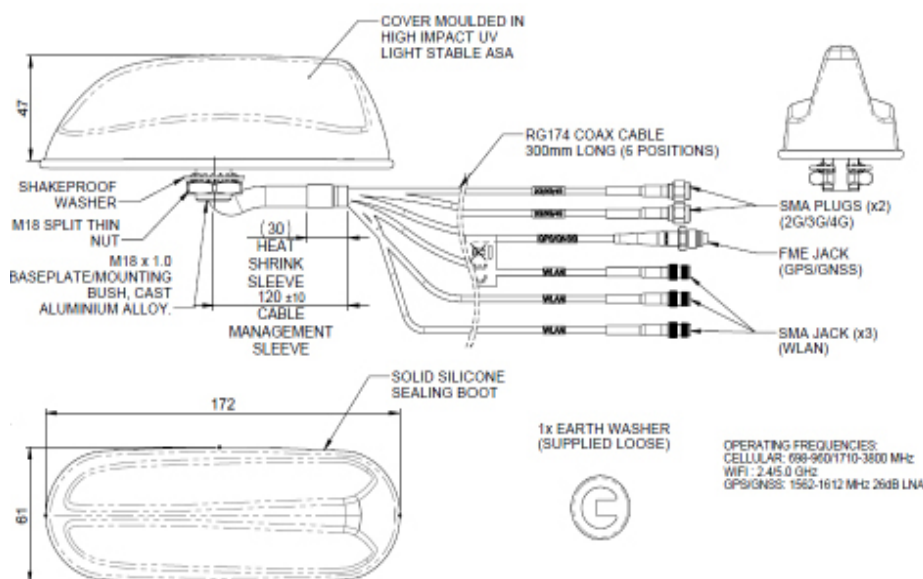
MIMO LTE/GPS/WIFI ANTENNA

The Multi Function has a compact OEM style shark fin housing that contains 2x2 MiMo antenna function for 4G/3G/2G and an active antenna for

GPS/GLONASS/Galileo/Beidou with 26dB gain LNA. In order to maximise functionality versions of the Multi Function Antenna are available that add either 2x2 MiMo or 3x3 MiMo antenna functionality for 2.4/5.8GHz WiFi.

The shark fin style design provides multiple antenna functions while remaining discreet and is suitable for public safety (overt/covert), industrial and transport applications where a cost effective, efficient and robust antenna is essential. Requiring only a single hole mounting, the SHK[G] reduces vehicle damage, installation time & cost and visual impact whilst protecting a vehicle's resale value.

Technical Drawing



MULTI FUNCTION MIMO ANTENNA

MIMO LTE/GPS/WIFI ANTENNA

MULTI FUNCTION MIMO ANTENNA

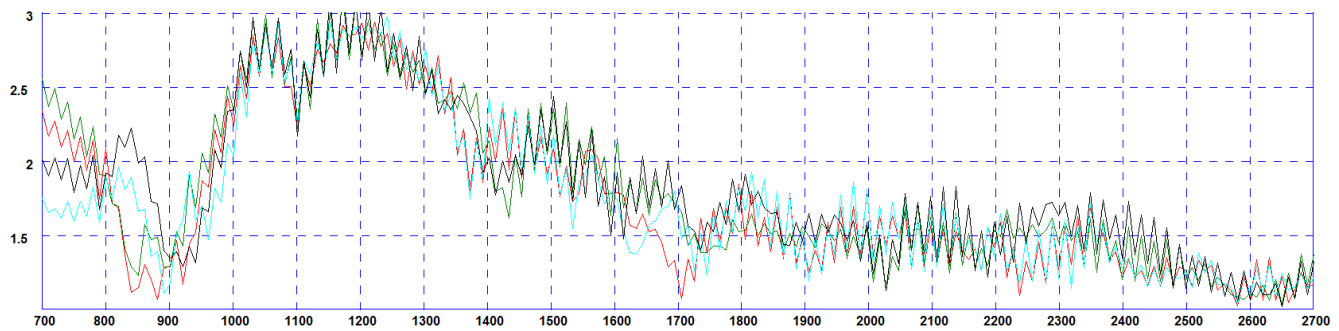
Part Number				
	2332157-1	2332157-2	2332157-3	2332157-4
Electrical Data				
Frequency Range (MHz)	698-960 / 1710-2170 / 2500-3800 (2G,3G,4G)			
	-	1562-1612 (GPS/GNSS/Galileo/Beidou)		
	-	2300-2500, 4900-6000 (WLAN)		
Peak Gain: (Excluding cable loss)	Elements 2&3	2dBi (598-960MHz), 5dBi (1710-3800MHz)		
	Elements 4,5,6	-	4dBi (2.4GHz), 6dBi (5.8GHz)	
Isolation with 5m CS29	Cellular >12dBi, WiFi >20dB			
Typical efficiency w/o cable loss	elements 2&3: >50%			
Correlation co-efficient	Elements 2&3: <0.2			
Polarisation	Vertical (Element 6 is Horizontal)			
Pattern	Omni Directional			
Impedance	50Ω			
Max Input Power (W)	25			
GPS /GNSS Data				
Frequency Range (MHz)	-	1562-1612		
VSWR	-	<2:1 ± 4MHz		
Gain: LNA	-	26dB		
Polarisation	-	Righth Hand Circular		
Operating Voltage	-	3-5V DC (fed via Coax)		
Current	-	Typical <20mA		
Mechanical Data				
Dimensions (mm)	Height	50 (2.2")		
	Length	170 (6.77")		
	Width	60 (2.4")		
Operating Temp (°C)	-40 to +80°C (-40 to 176°F)			
Material	ASA, EPDM, Aluminium Alloy Black			
Approx Weight (g)	260			
Ingress protection	IP 66			
Mounting Data				
Fixing	Panel Mount, 19mm hole size			
Cable Data				
Cable Type all feeds	RG174 (UN ECE 118.01 Compliant)			
Dimensions	2.8mm x 300mm (0.11" x 12")			
Termination	GPS/GNSS: FME Socket, 4G: 2x SMA plug, WiFi: 2 or 3x SMA socket			

MULTI FUNCTION MIMO ANTENNA

MIMO LTE/GPS/WIFI ANTENNA

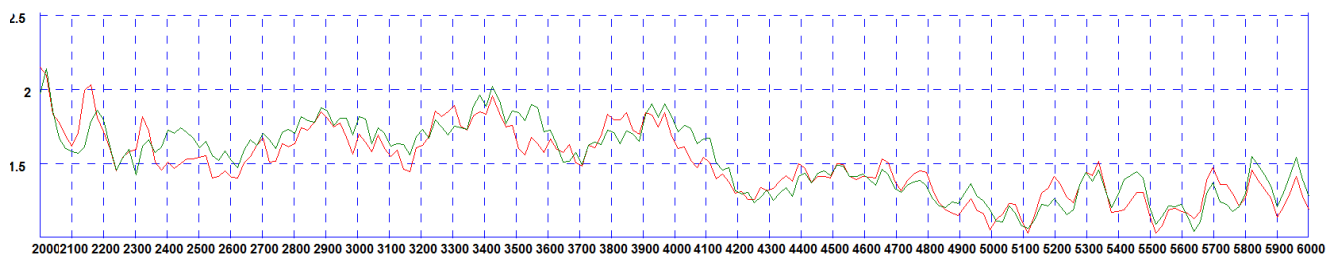
VSWR

Typical VSWR - 2G/3G/4G Elements 2&3*



*VSWR measured with no whip and 5m (16') of CS29 cable Black & Blue = no ground plane Green and Red = 600x600mm (2'x2') ground plane

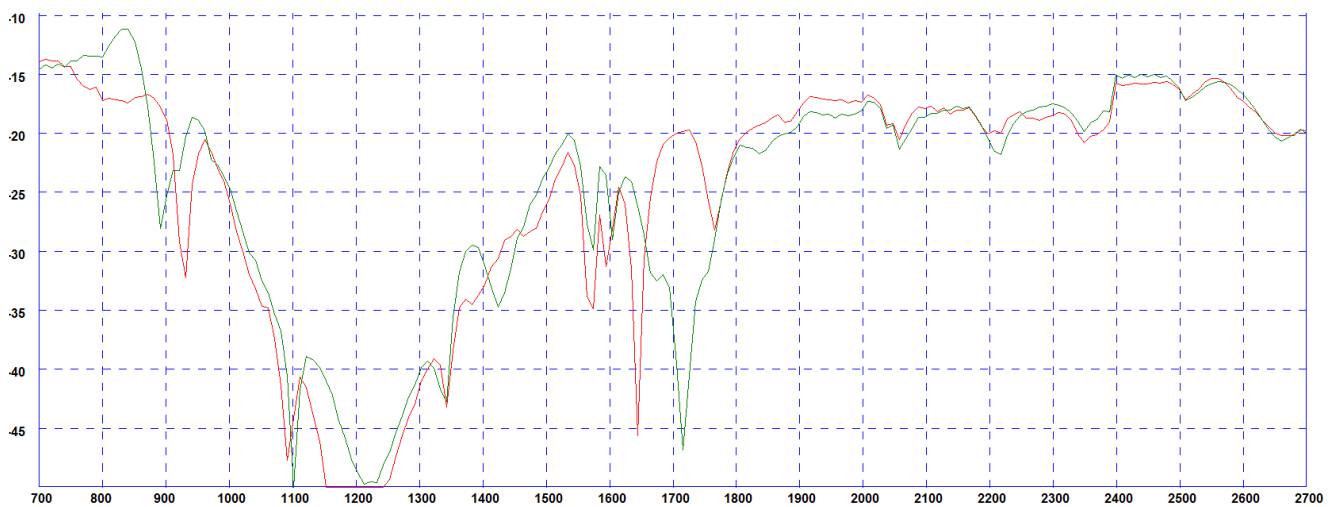
Typical VSWR - WiFi Elements 4&5*



*VSWR measured with no whip and 5m (16') of CS32 cable

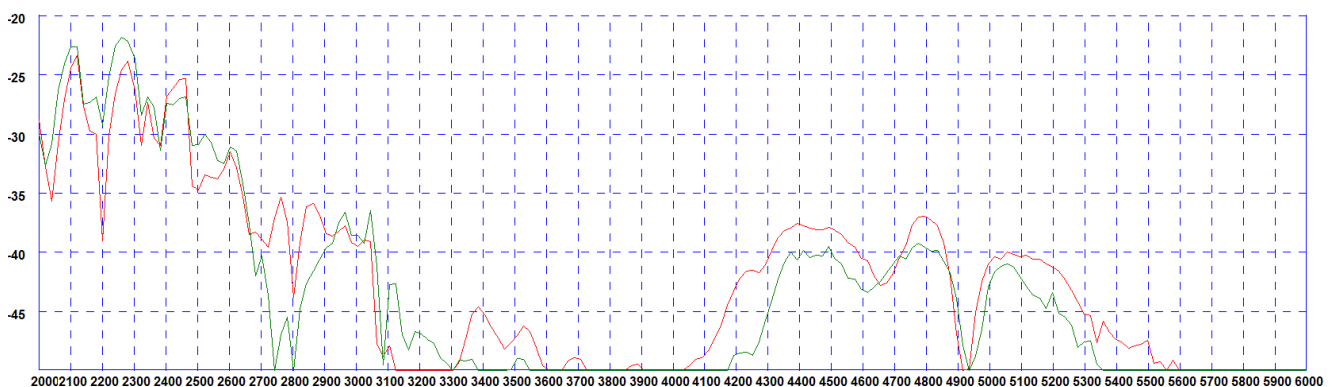
Isolation

Typical Isolation - Cellular Elements 2&3*



*Isolation measured with no whip and 5m (16') of CS29 cable Green Plot = 600x600mm (2' X2') ground plane Red Plot = no ground plane

Typical Isolation - WiFi Elements 4&5*

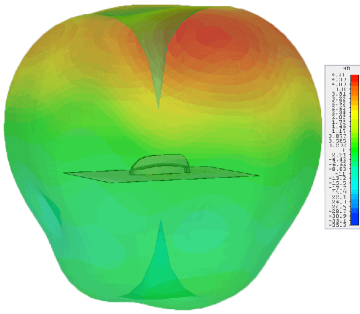


*Isolation measured with no whip and 5m (16') of CS29 cable Red Plot = 600x600mm (2' X2') ground plane Green Plot = no ground plane

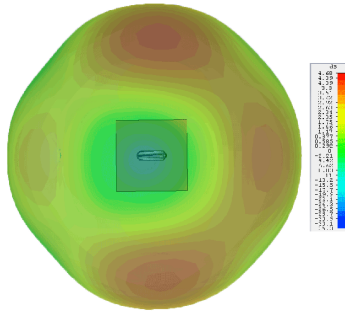
MULTI FUNCTION MIMO ANTENNA

MIMO LTE/GPS/WIFI ANTENNA

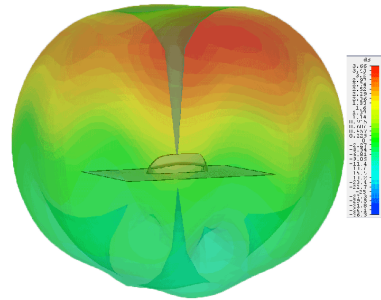
3D Gain Plot Side (700MHz)



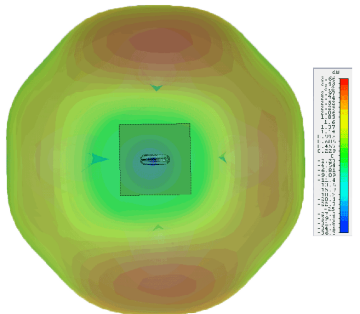
3D Gain Plot Top (700MHz)



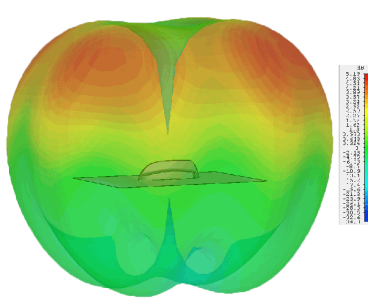
3D Gain Plot Side (800MHz)



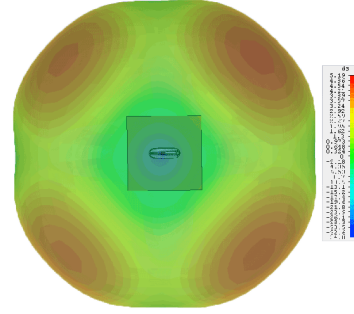
3D Gain Plot Top (800MHz)



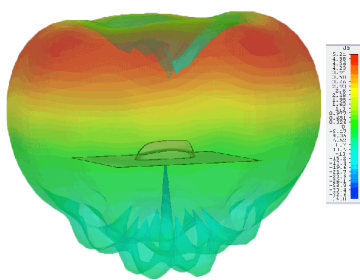
3D Gain Plot Side (900MHz)



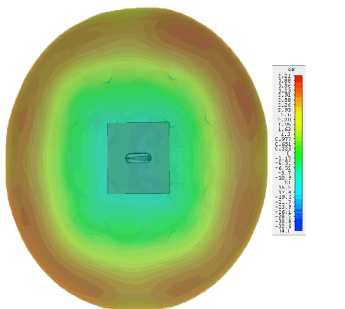
3D Gain Plot Top (900MHz)



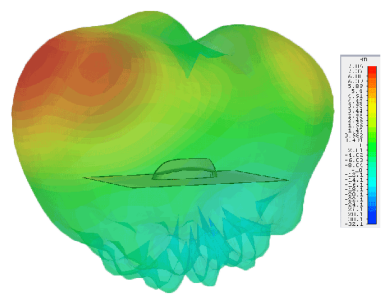
3D Gain Plot Side (1800MHz)



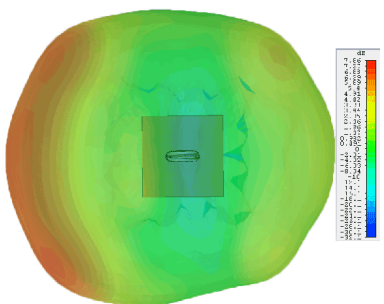
3D Gain Plot Top (1800MHz)



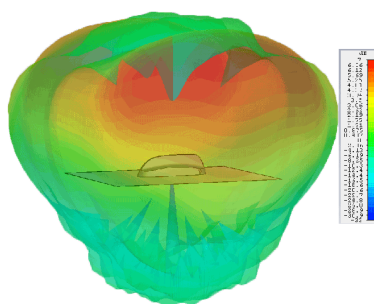
3D Gain Plot Side (2100MHz)



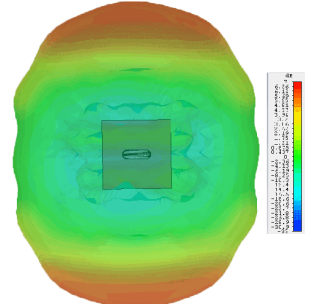
3D Gain Plot Top (2100MHz)



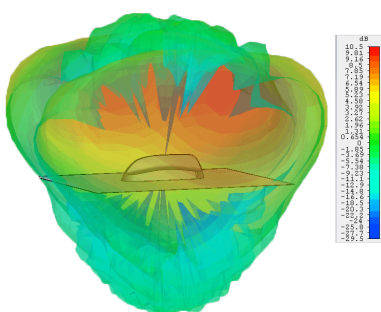
3D Gain Plot Side (2600MHz)



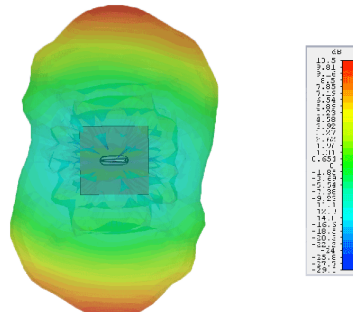
3D Gain Plot Top (2600MHz)



3D Gain Plot Side (3600MHz)



3D Gain Plot Top (3600MHz)

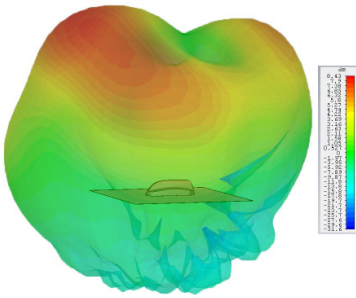


MULTI FUNCTION MIMO ANTENNA

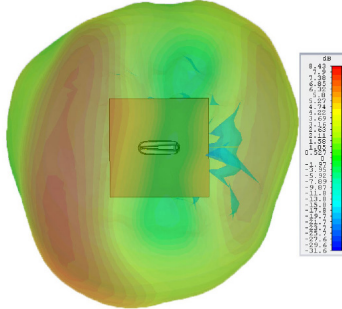
MIMO LTE/GPS/WIFI ANTENNA

Typical 3D Radiation Patterns - Wifi Elements 4&5

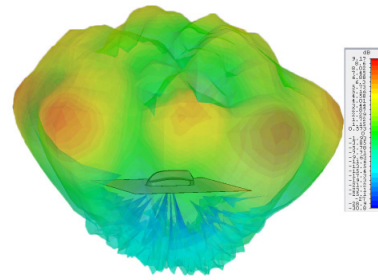
3D Gain Plot Side (2.4GHz)



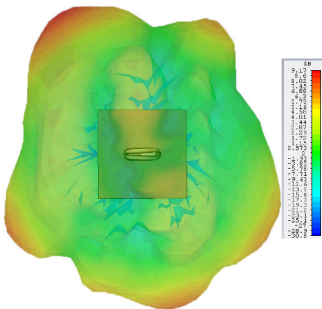
3D Gain Plot Top (2.4GHz)



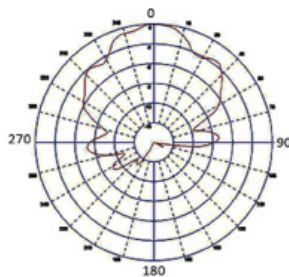
3D Gain Plot Side (5.4GHz)



3D Gain Plot Top (5.4GHz)

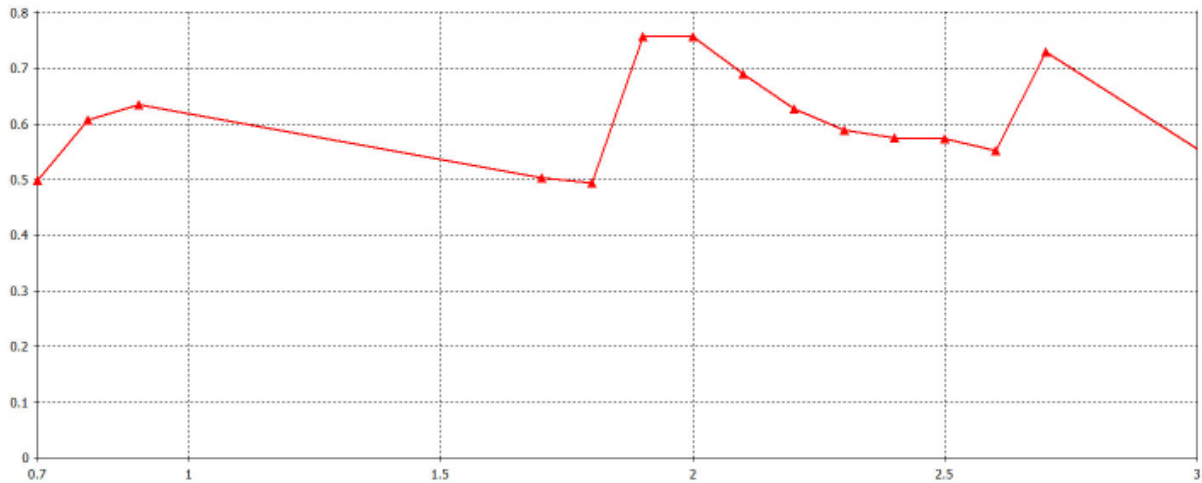


Typical Radiation Patterns - GPS/GNSS Element 1 Element 3: Typical E Plane Pattern



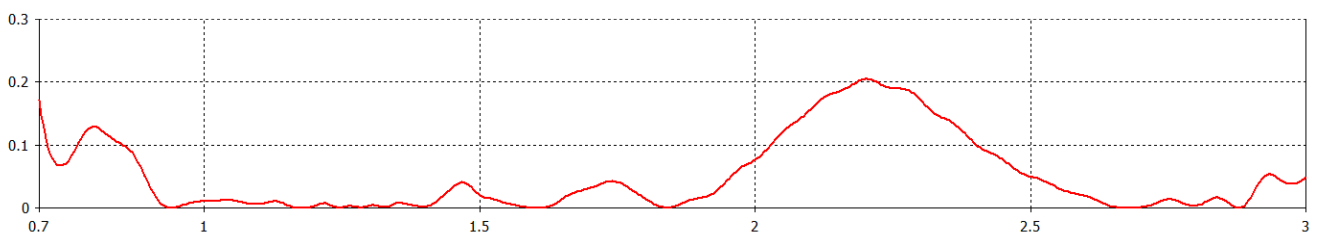
*3D radiation patterns simulated in CST Microwave Studio on a 600x600mm (2' X2') ground plane with both elements fed together.

Typical Total Efficiency Typical Total Efficiency - Cellular Elements 2&3*



* Efficient simulated in free space with no whip and no ground plane and no cable.

Typical Correlation Co-efficient Typical Correlation Co-efficient- Cellular Elements 2&3*



*Correlation co-efficient simulated in free space with no whip, no additional cable and no ground plane



Компания «ЭлектроПласт» предлагает заключение долгосрочных отношений при поставках импортных электронных компонентов на взаимовыгодных условиях!

Наши преимущества:

- Оперативные поставки широкого спектра электронных компонентов отечественного и импортного производства напрямую от производителей и с крупнейших мировых складов;
- Поставка более 17-ти миллионов наименований электронных компонентов;
- Поставка сложных, дефицитных, либо снятых с производства позиций;
- Оперативные сроки поставки под заказ (от 5 рабочих дней);
- Экспресс доставка в любую точку России;
- Техническая поддержка проекта, помощь в подборе аналогов, поставка прототипов;
- Система менеджмента качества сертифицирована по Международному стандарту ISO 9001;
- Лицензия ФСБ на осуществление работ с использованием сведений, составляющих государственную тайну;
- Поставка специализированных компонентов (Xilinx, Altera, Analog Devices, Intersil, Interpoint, Microsemi, Aeroflex, Peregrine, Syfer, Eurofarad, Texas Instrument, Miteq, Cobham, E2V, MA-COM, Hittite, Mini-Circuits, General Dynamics и др.);

Помимо этого, одним из направлений компании «ЭлектроПласт» является направление «Источники питания». Мы предлагаем Вам помощь Конструкторского отдела:

- Подбор оптимального решения, техническое обоснование при выборе компонента;
- Подбор аналогов;
- Консультации по применению компонента;
- Поставка образцов и прототипов;
- Техническая поддержка проекта;
- Защита от снятия компонента с производства.



Как с нами связаться

Телефон: 8 (812) 309 58 32 (многоканальный)

Факс: 8 (812) 320-02-42

Электронная почта: org@eplast1.ru

Адрес: 198099, г. Санкт-Петербург, ул. Калинина, дом 2, корпус 4, литера А.