

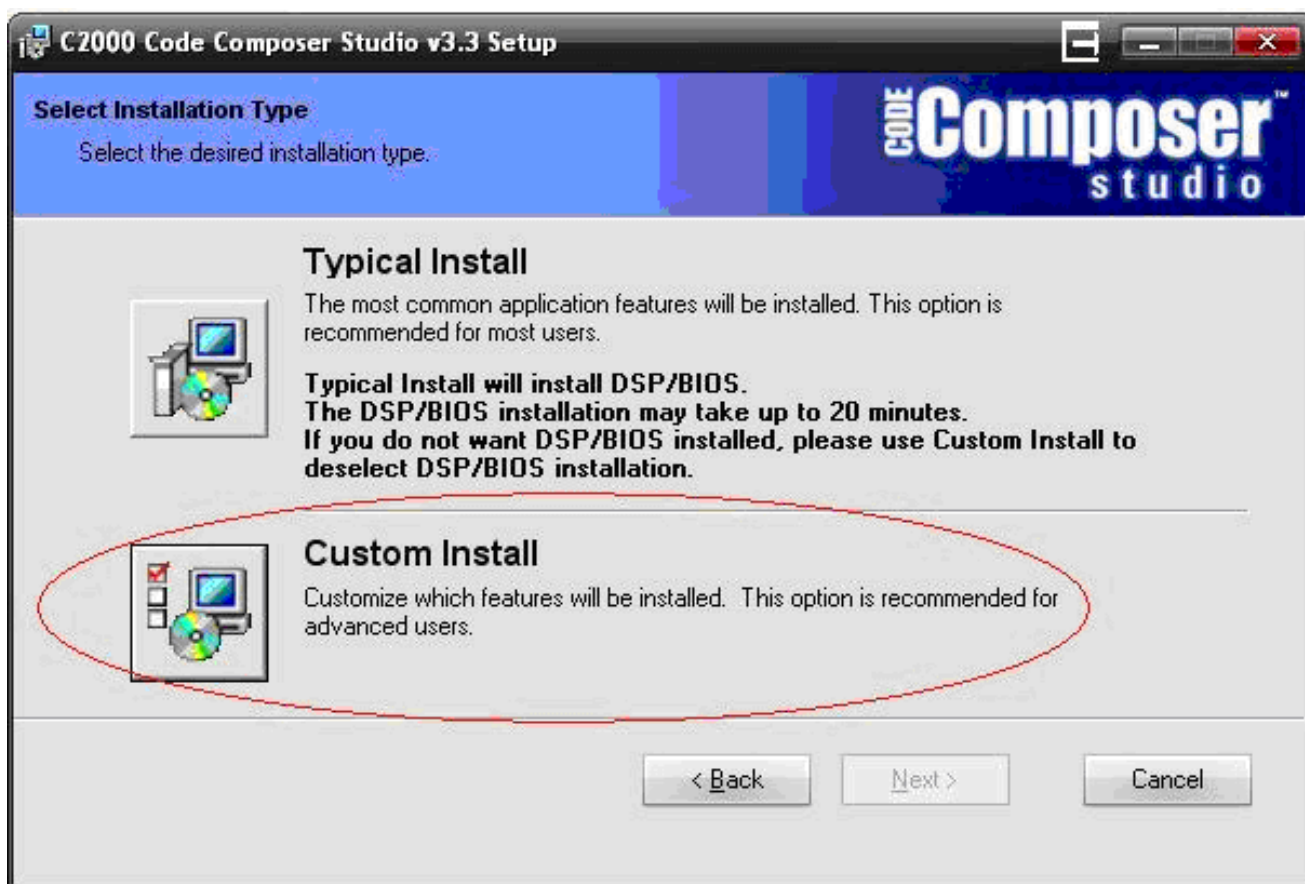
Connecting Code Composer Studio to a TMS320C2000 Device

Code Composer Studio (CCS) is the IDE supplied by Texas Instruments for developing and debugging programs on the C2000 microcontroller. This quick start guide gives a very high level overview of how to configure CCS to work with a C2000 microcontroller. For more detailed information on CCS please visit <http://www.ti.com/lit/htm/spru509>.

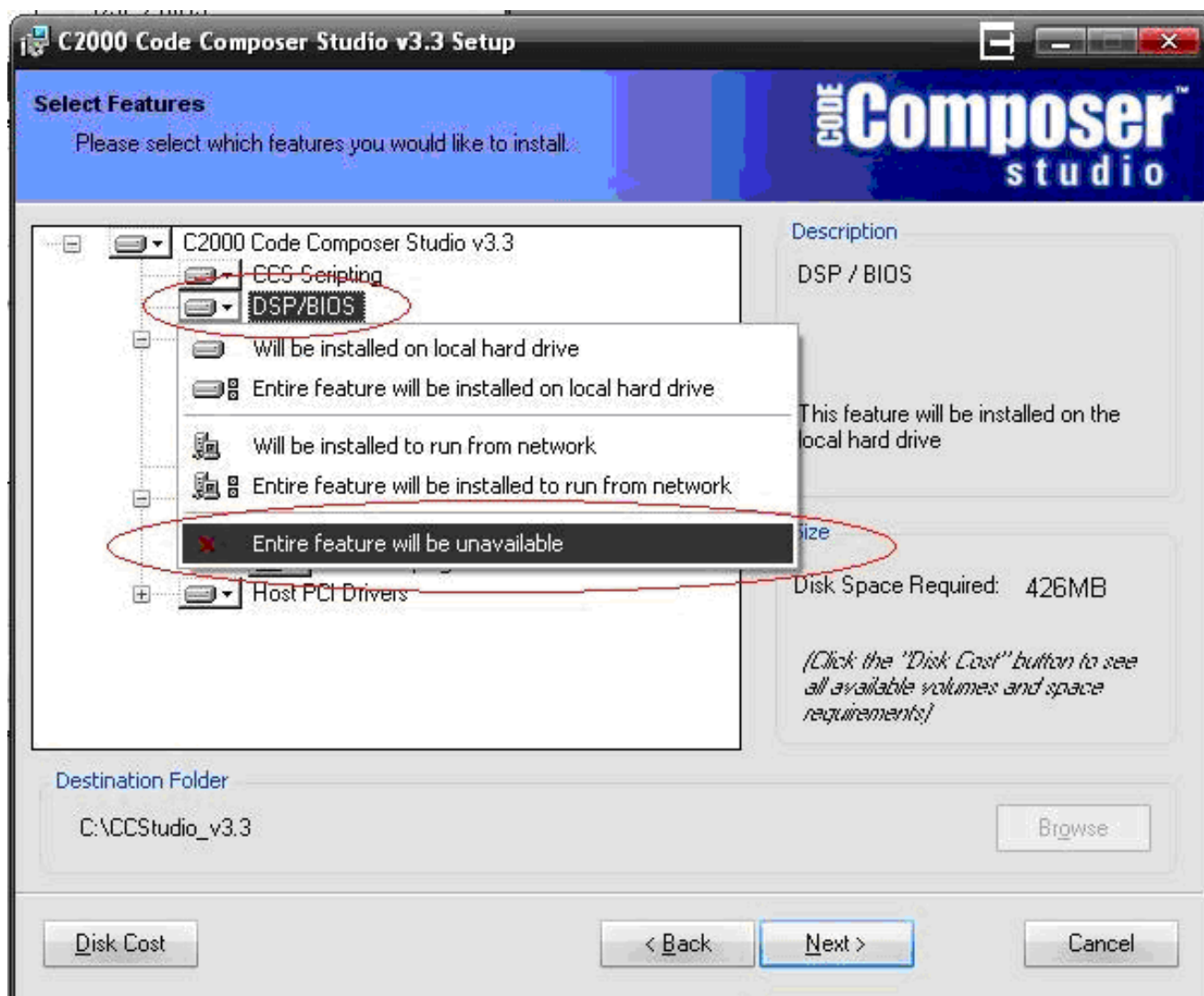
1 Installing Code Composer Studio v3.3

Follow these steps to install CCSv3.3:

1. Insert the Code Composer CD into your CD drive and open the “setup.exe” program.
The Select Installation Type screen appears.
2. Select Custom Install.



3. Under the install options, click DSP/BIOS and then select the “entire feature will not be available” option. DSP/BIOS is a real-time operating system designed by Texas Instruments to run on various TI processors, including the C2000. However, most C2000 applications do not require DSP/BIOS, and the installation time is quite long. DSP/BIOS can always be installed later on top of an existing CCS installation.

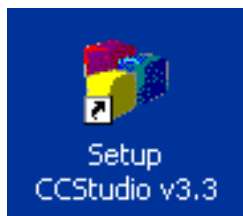


4. Install CCS into the desired directory. If CCS is already installed, installing into a different directory will leave the existing version of CCS untouched and you will be able to use both CCS versions.

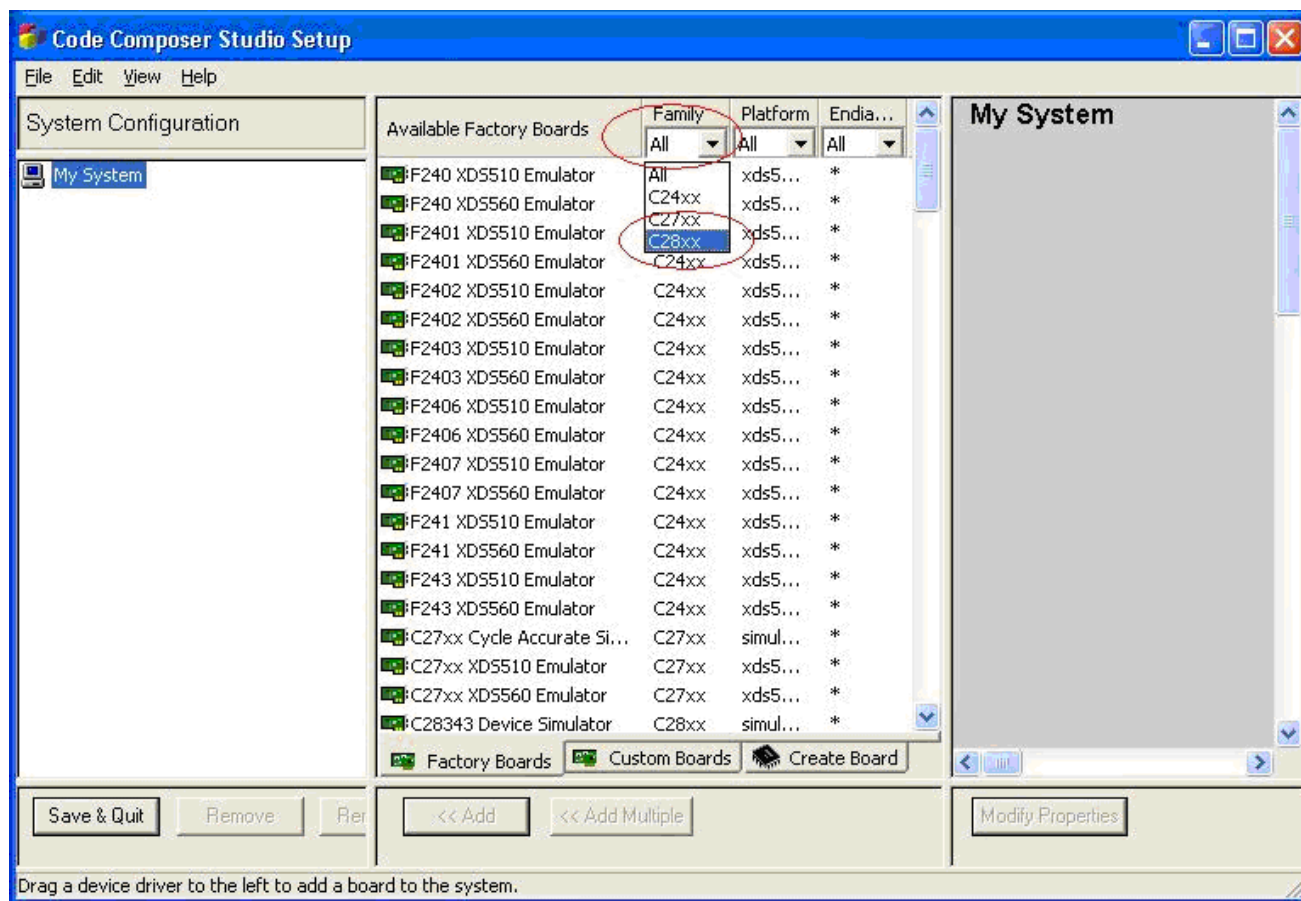
2 Configuring CCS for a C2000 Microcontroller

Note: If you are using a JTAG emulator other than the onboard USB JTAG emulation built into many C2000 development tools, you should install the drivers for the emulator at this point.

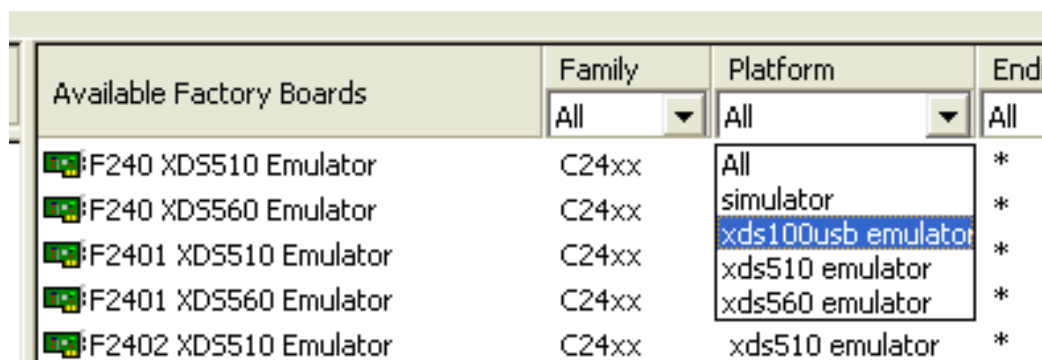
1. Launch the Setup CCStudio v3.3 application the installer created on your desktop.



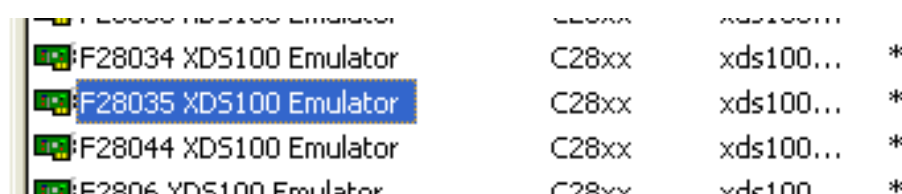
2. Under the Family dropdown menu, select C28xx.



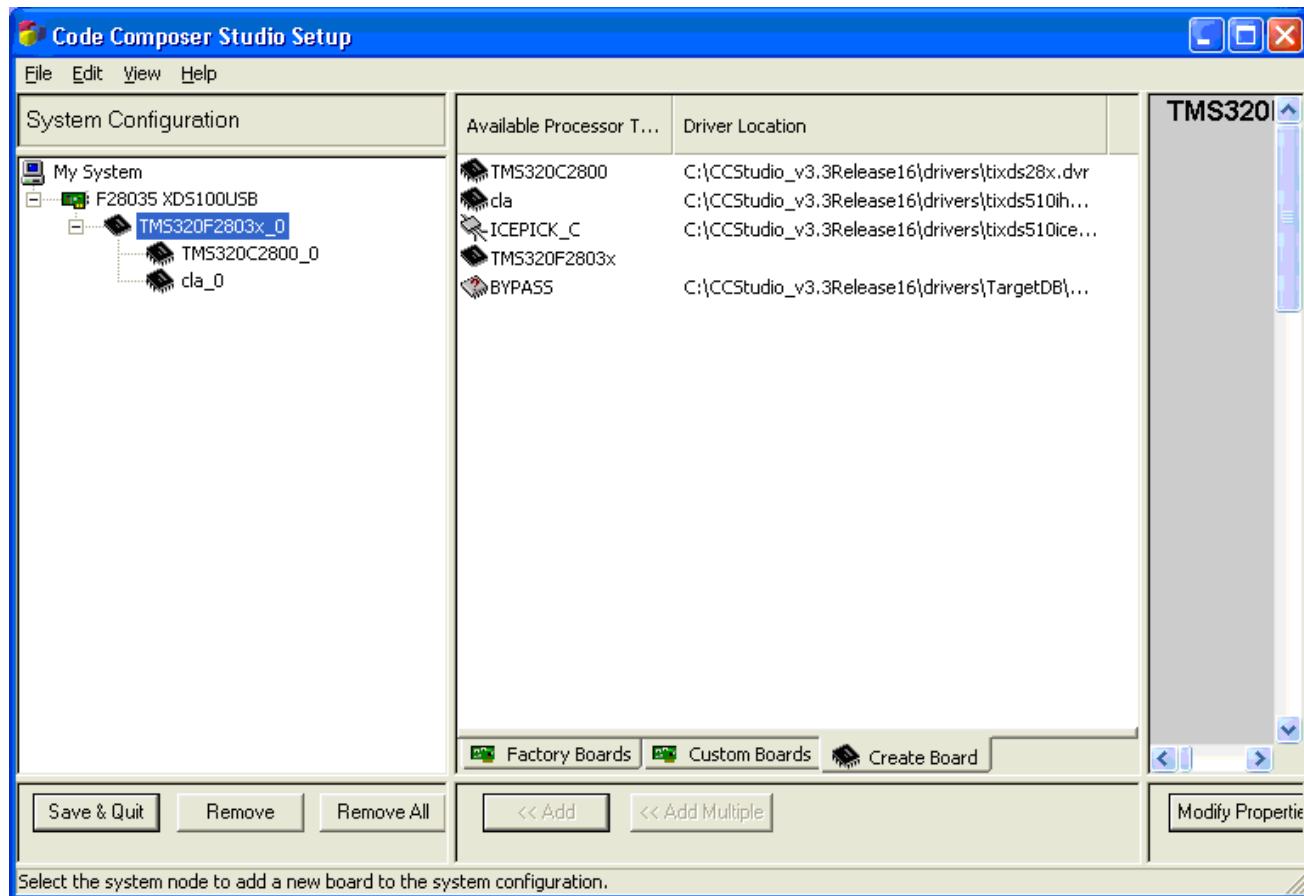
- Under the Platform dropdown menu, select the type of emulator you are using. If you are using the onboard USB JTAG emulation included in many C2000 development tools, select xds100usb. If you are using a different emulator you should be able to select it from this drop down menu.



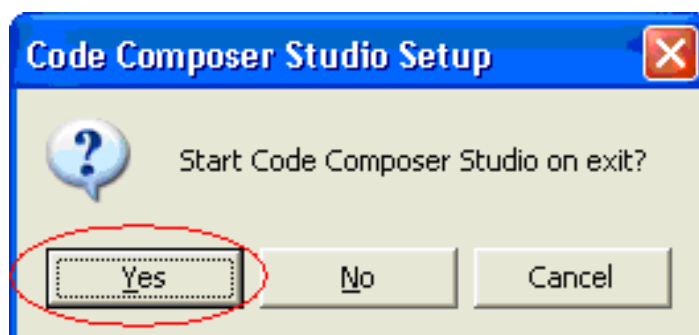
- Now all of the configurations that are not C28xx (the current generation of C2000 microcontrollers) and are not XDS100 or the emulator you selected, have been eliminated from the selectable board configurations. It is now much easier to find the configuration for the C2000 MCU you are using. In this quick start guide we'll assume the MCU is a Piccolo F28035 device. Select the F28035 XDS100 Emulator configuration.



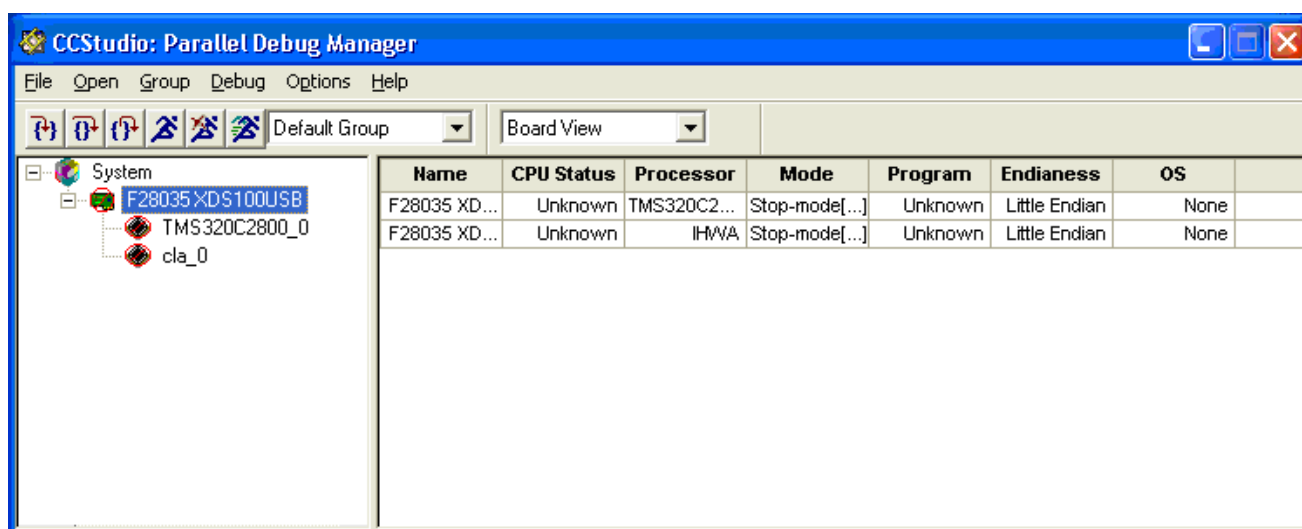
- Now click Add. The configuration you selected should now appear under System Configurations. Note that the F28035 device contains the CLA, which is an independent coprocessor, and thus the configuration shows there are two CPUs. For other C2000 microcontrollers there will only be one CPU. For more information on the CLA, please visit www.ti.com/piccolo.

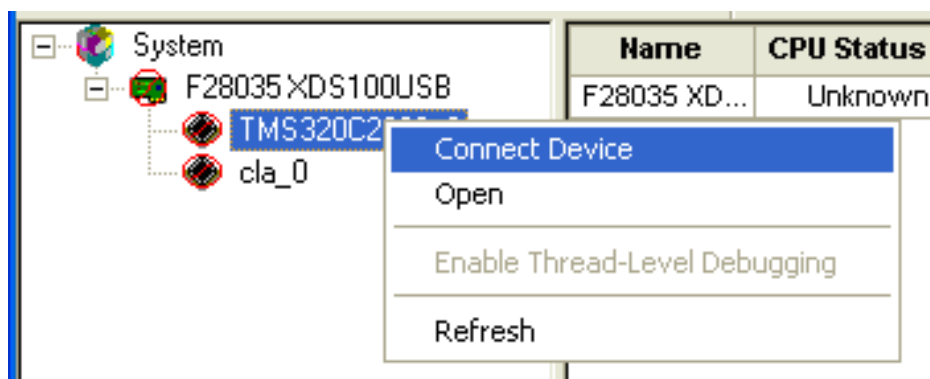
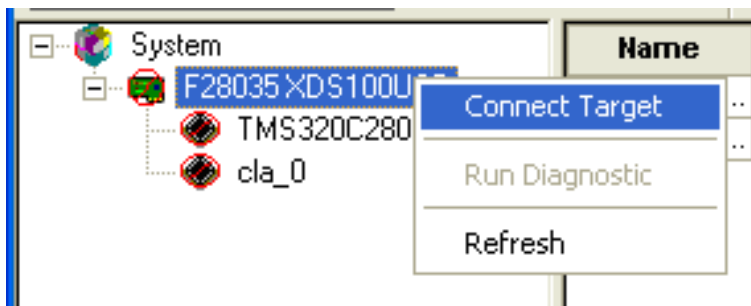


6. Click Save & Quit and then Yes to launch CCS on exit.
CCS is now configured for your particular JTAG emulator and C2000 microcontroller. Unless you need to change your emulator or C2000 MCU, from now on you can directly launch CCS by opening the CCStudio V3.3 program.

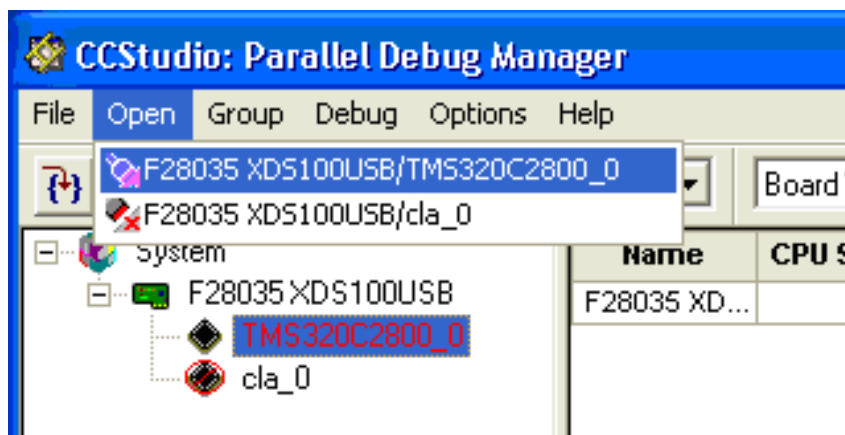


7. This step applies ONLY to Piccolo F28035 users. Because the CLA is treated as a separate CPU core, CCS will ask which core on which you would like to develop. You can simply right-click on the upper level F28035XDS100USB and connect to both, or connect to each core individually by right-clicking on either the TMS320C2800_0 or the cla_0.

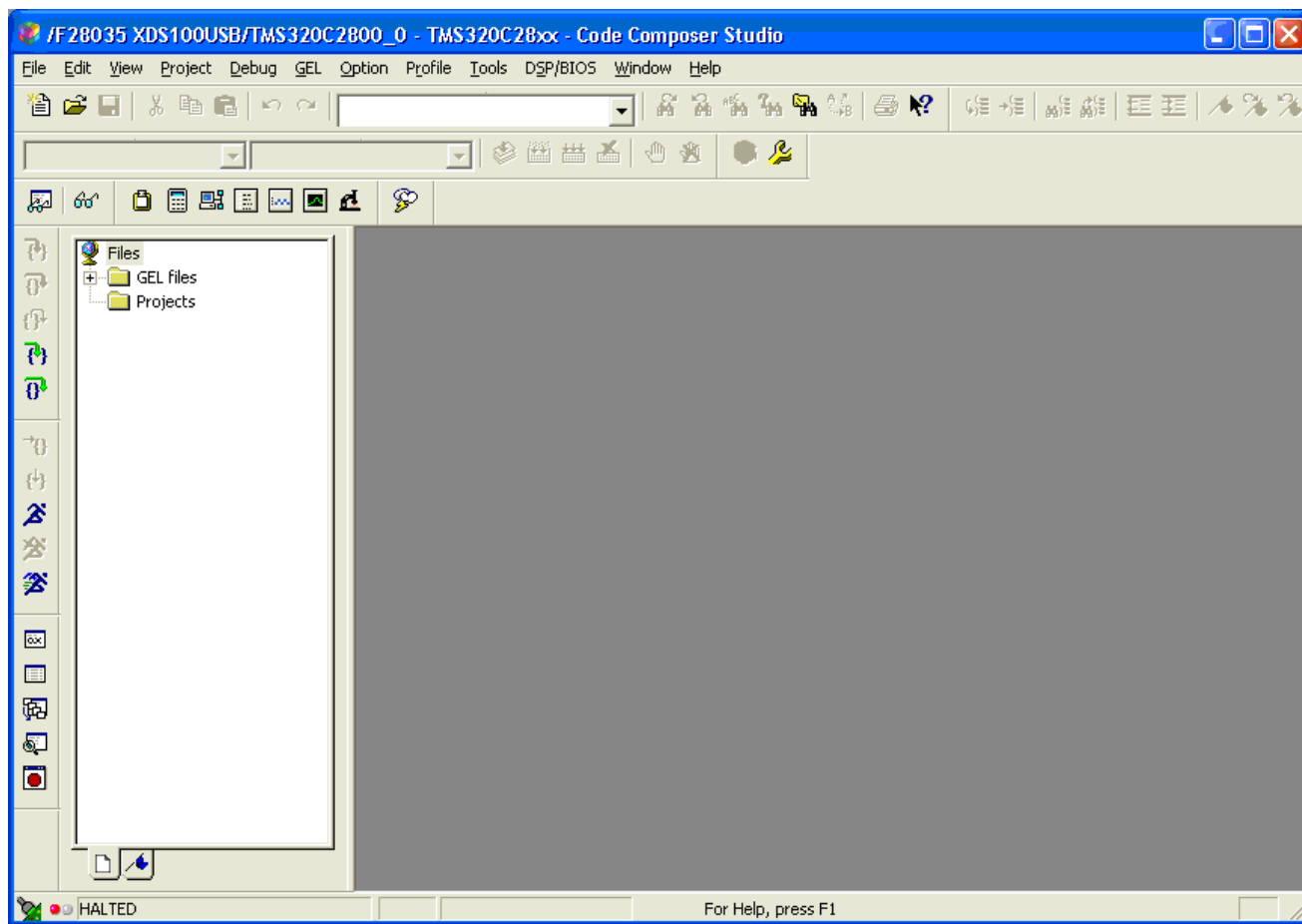




8. This step applies ONLY to Piccolo F28035 users. Once the C28x CPU or CLA is connected you can now launch the CCS debugging window under the Open menu.



9. The CCS development and debugging window should now open. From here you can open a Workspace, open a project, write a program, or download code onto the C2000 microcontroller. For more information on CCS please visit <http://www.ti.com/lit/htm/spru509>. From this point you can start developing your own C2000 project or begin going through the projects included with your C2000 development tool, available at www.ti.com/c2000tools.



IMPORTANT NOTICE

Texas Instruments Incorporated and its subsidiaries (TI) reserve the right to make corrections, modifications, enhancements, improvements, and other changes to its products and services at any time and to discontinue any product or service without notice. Customers should obtain the latest relevant information before placing orders and should verify that such information is current and complete. All products are sold subject to TI's terms and conditions of sale supplied at the time of order acknowledgment.

TI warrants performance of its hardware products to the specifications applicable at the time of sale in accordance with TI's standard warranty. Testing and other quality control techniques are used to the extent TI deems necessary to support this warranty. Except where mandated by government requirements, testing of all parameters of each product is not necessarily performed.

TI assumes no liability for applications assistance or customer product design. Customers are responsible for their products and applications using TI components. To minimize the risks associated with customer products and applications, customers should provide adequate design and operating safeguards.

TI does not warrant or represent that any license, either express or implied, is granted under any TI patent right, copyright, mask work right, or other TI intellectual property right relating to any combination, machine, or process in which TI products or services are used. Information published by TI regarding third-party products or services does not constitute a license from TI to use such products or services or a warranty or endorsement thereof. Use of such information may require a license from a third party under the patents or other intellectual property of the third party, or a license from TI under the patents or other intellectual property of TI.

Reproduction of TI information in TI data books or data sheets is permissible only if reproduction is without alteration and is accompanied by all associated warranties, conditions, limitations, and notices. Reproduction of this information with alteration is an unfair and deceptive business practice. TI is not responsible or liable for such altered documentation. Information of third parties may be subject to additional restrictions.

Resale of TI products or services with statements different from or beyond the parameters stated by TI for that product or service voids all express and any implied warranties for the associated TI product or service and is an unfair and deceptive business practice. TI is not responsible or liable for any such statements.

TI products are not authorized for use in safety-critical applications (such as life support) where a failure of the TI product would reasonably be expected to cause severe personal injury or death, unless officers of the parties have executed an agreement specifically governing such use. Buyers represent that they have all necessary expertise in the safety and regulatory ramifications of their applications, and acknowledge and agree that they are solely responsible for all legal, regulatory and safety-related requirements concerning their products and any use of TI products in such safety-critical applications, notwithstanding any applications-related information or support that may be provided by TI. Further, Buyers must fully indemnify TI and its representatives against any damages arising out of the use of TI products in such safety-critical applications.

TI products are neither designed nor intended for use in military/aerospace applications or environments unless the TI products are specifically designated by TI as military-grade or "enhanced plastic." Only products designated by TI as military-grade meet military specifications. Buyers acknowledge and agree that any such use of TI products which TI has not designated as military-grade is solely at the Buyer's risk, and that they are solely responsible for compliance with all legal and regulatory requirements in connection with such use.

TI products are neither designed nor intended for use in automotive applications or environments unless the specific TI products are designated by TI as compliant with ISO/TS 16949 requirements. Buyers acknowledge and agree that, if they use any non-designated products in automotive applications, TI will not be responsible for any failure to meet such requirements.

Following are URLs where you can obtain information on other Texas Instruments products and application solutions:

Products

Amplifiers	amplifier.ti.com
Data Converters	dataconverter.ti.com
DLP® Products	www.dlp.com
DSP	dsp.ti.com
Clocks and Timers	www.ti.com/clocks
Interface	interface.ti.com
Logic	logic.ti.com
Power Mgmt	power.ti.com
Microcontrollers	microcontroller.ti.com
RFID	www.ti-rfid.com
RF/IF and ZigBee® Solutions	www.ti.com/lprf

Applications

Audio	www.ti.com/audio
Automotive	www.ti.com/automotive
Broadband	www.ti.com/broadband
Digital Control	www.ti.com/digitalcontrol
Medical	www.ti.com/medical
Military	www.ti.com/military
Optical Networking	www.ti.com/opticalnetwork
Security	www.ti.com/security
Telephony	www.ti.com/telephony
Video & Imaging	www.ti.com/video
Wireless	www.ti.com/wireless

Mailing Address: Texas Instruments, Post Office Box 655303, Dallas, Texas 75265
Copyright © 2009, Texas Instruments Incorporated



Компания «ЭлектроПласт» предлагает заключение долгосрочных отношений при поставках импортных электронных компонентов на взаимовыгодных условиях!

Наши преимущества:

- Оперативные поставки широкого спектра электронных компонентов отечественного и импортного производства напрямую от производителей и с крупнейших мировых складов;
- Поставка более 17-ти миллионов наименований электронных компонентов;
- Поставка сложных, дефицитных, либо снятых с производства позиций;
- Оперативные сроки поставки под заказ (от 5 рабочих дней);
- Экспресс доставка в любую точку России;
- Техническая поддержка проекта, помощь в подборе аналогов, поставка прототипов;
- Система менеджмента качества сертифицирована по Международному стандарту ISO 9001;
- Лицензия ФСБ на осуществление работ с использованием сведений, составляющих государственную тайну;
- Поставка специализированных компонентов (Xilinx, Altera, Analog Devices, Intersil, Interpoint, Microsemi, Aeroflex, Peregrine, Syfer, Eurofarad, Texas Instrument, Miteq, Cobham, E2V, MA-COM, Hittite, Mini-Circuits, General Dynamics и др.);

Помимо этого, одним из направлений компании «ЭлектроПласт» является направление «Источники питания». Мы предлагаем Вам помощь Конструкторского отдела:

- Подбор оптимального решения, техническое обоснование при выборе компонента;
- Подбор аналогов;
- Консультации по применению компонента;
- Поставка образцов и прототипов;
- Техническая поддержка проекта;
- Защита от снятия компонента с производства.



Как с нами связаться

Телефон: 8 (812) 309 58 32 (многоканальный)

Факс: 8 (812) 320-02-42

Электронная почта: org@eplast1.ru

Адрес: 198099, г. Санкт-Петербург, ул. Калинина, дом 2, корпус 4, литера А.