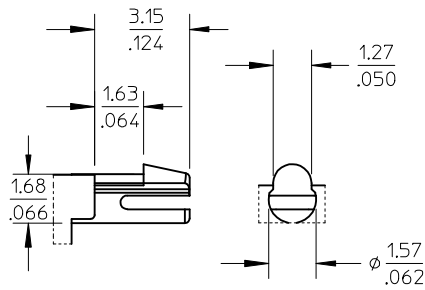
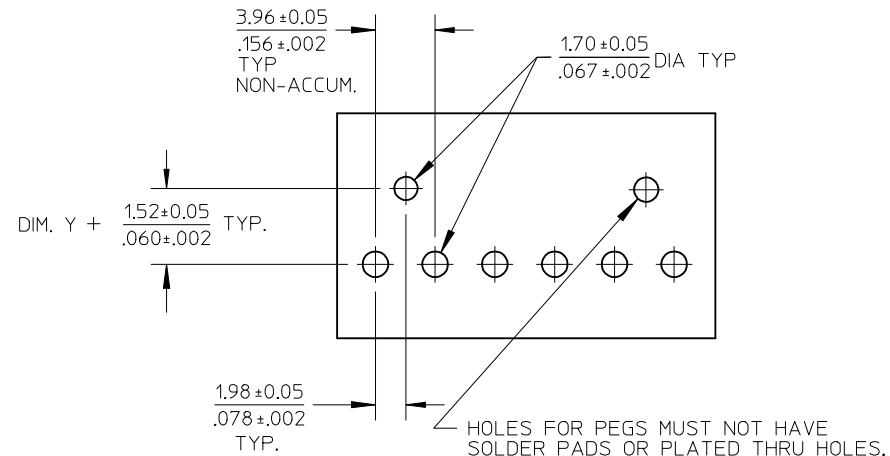


| NO. OF CKTS. | DIM. A         | DIM. B                   | SLOT LOC BETWEEN CKTS |
|--------------|----------------|--------------------------|-----------------------|
| 2            | 7.77<br>.306   | 3.96±0.05<br>.156±.002   | NONE                  |
| 3            | 11.73<br>.462  | 7.92±0.08<br>.312±.003   | NONE                  |
| 4            | 15.70<br>.618  | 11.89±0.08<br>.468±.003  | NONE                  |
| 5            | 19.66<br>.774  | 15.85±0.10<br>.624±.004  | NONE                  |
| 6            | 23.62<br>.930  | 19.81±0.10<br>.780±.004  | 3 & 4                 |
| 7            | 27.58<br>1.086 | 23.77±0.10<br>.936±.004  | 4 & 5                 |
| 8            | 31.55<br>1.242 | 27.74±0.13<br>1.092±.005 | 4 & 5                 |
| 9            | 35.51<br>1.398 | 31.70±0.13<br>1.248±.005 | 5 & 6                 |
| 10           | 39.47<br>1.554 | 35.66±0.13<br>1.404±.005 | 5 & 6                 |
| 11           | 43.43<br>1.710 | 39.62±0.15<br>1.560±.006 | 6 & 7                 |
| 12           | 47.40<br>1.866 | 43.59±0.15<br>1.716±.006 | 4 & 5<br>8 & 9        |

|  |   |                                       |                           |                              |   |                  |  |                        |  |  |
|--|---|---------------------------------------|---------------------------|------------------------------|---|------------------|--|------------------------|--|--|
| DIMENSION M<br>EC NO: UCP2013-1786<br>DRWN:MMSTROH 2012/11/05<br>CHKD:MKIPPER 2012/11/07<br>APPR:FSM/TH 2012/11/06 | QUALITY SYMBOLS<br>$\nabla = 0$<br>$\nabla = 0$<br>$\nabla = 0$ | GENERAL TOLERANCES (UNLESS SPECIFIED) |                           | DIMENSION STYLE<br>MM/IN     |   | SCALE<br>2:1     | DESIGN UNITS<br>INCH   | THIRD ANGLE PROJECTION |  |  |
|  |   | 4 PLACES                              | ± ---                     | ± ---                        | DRAWN BY<br>SCHAFFER  | DATE<br>12-12-03 | TITLE<br>FRICTION LOCK HDR. ASSY.<br>.156 BENT SQ PINS W/PEGS<br>RT. ANGLE MOUNT |                        |  |  |
|  |   | 3 PLACES                              | ± ---                     | ± .010                       | CHECKED BY<br>SAMIEC  | DATE<br>12-15-03 |  |                        |  |  |
|  |   | 2 PLACES                              | ± 0.25                    | ± .015                       | APPROVED BY<br>MARGULIS   | DATE<br>12-19-03 |  |                        |  |  |
| 1 PLACE  | ± 0.38  | ± ---                                 | MATERIAL NO.<br>SEE CHART | DOCUMENT NO.<br>SD-42892-001 | SHEET NO.<br>1 OF *   |                  |  |                        |  |  |
| 0 PLACE  | ±   | ±                                     | ANGULAR ±1/2°             |                              | THIS DRAWING CONTAINS INFORMATION THAT IS PROPRIETARY TO MOLEX INCORPORATED AND SHOULD NOT BE USED WITHOUT WRITTEN PERMISSION |                  |  |                        |  |  |
| DRAFT WHERE APPLICABLE MUST REMAIN WITHIN DIMENSIONS   |   |                                       |                           |                              |   |                  |  |                        |  |  |



PEG DETAIL

RECOMMENDED PC BOARD HOLE LAYOUT:  
COMPONENT SIDE FOR 1.57/.062 THICK PCBFOR CORRECT ORIENTATION OF PARTS WITH  
VOIDS, ELIMINATE CORRESPONDING PCB HOLE.

## NOTES:

- MATERIAL: HEADER-GLASS FILLED POLYESTER, 94V-0, MOLDED NATURAL WHITE  
PINS: BRASS
- FINISHES: (197) OVERALL REFLOWED MATTE TIN: 0.00152/.000060 MIN.  
OVER 0.00127/.000050 MIN. NICKEL OVERALL.  
(208) SELECT GOLD: 0.00038/.000015  
SELECT TIN: 0.00254/.000100  
OVERALL NICKEL UNDERPLATE: 0.00127/.000050  
(228) SELECT GOLD: 0.00076/.000030  
SELECT TIN: 0.00254/.000100  
OVERALL NICKEL UNDERPLATE: 0.00127/.000050  
(241) SELECT GOLD: 0.00051/.000020 MIN.  
SELECT TIN: 0.00254/.000100 MIN.  
OVERALL NICKEL UNDERPLATE: 0.00127/.000050 MIN.
- PRODUCT SPECIFICATION: SEE PS-08-50.
- PACKAGING INFO: SEE TABLES
- SOLDERABILITY: PER SMES-152
- PIN PUSH OUT FORCE: PRIOR TO SOLDERING, A 3 LB MINIMUM FORCE (IN EITHER DIRECTION)  
SHALL BE REQUIRED TO PUSH THE PIN OUT OF THE HEADER.
- PARTS ARE STACKABLE END TO END ON (3.96)/.156 CENTERS.
- FOR PART WITHOUT PEGS SEE DWG. NO. SDA-41792.
- THIS PART CONFORMS TO CLASS B REQUIREMENTS OF COSMETIC SPECIFICATION PS-45499-002.
- SLOTS ON BACKWALL ARE BETWEEN CIRCUITS. SEE CHART FOR LOCATION.

| SEE SHEET 1<br>EC NO: UCP2013-1786<br>DRWN:MMSTROH 2012/11/05<br>CHKD:MKIPPER 2012/11/07<br>APPR:FSMITH 2012/11/06 | DESCRIPTION | QUALITY SYMBOLS         | GENERAL TOLERANCES (UNLESS SPECIFIED) |        | DIMENSION STYLE  |  | SCALE    | DESIGN UNITS   | THIRD ANGLE PROJECTION |  |  |
|--|-------------|-------------------------|---------------------------------------|--------|--|--|----------|--|------------------------|--|--|
|  |             |                         | mm                                    | INCH   | MM/IN  | 2:1  | INCH     | ⊙ □  |                        |  |  |
| H2   | REV         | ∇ = 0<br>∇ = 0<br>∇ = 0 | 4 PLACES                              | ± ---  | ± ---  | DRAWN BY   | DATE     | TITLE<br>FRICTION LOCK HDR. ASSY.<br>.156 BENT SQ PINS W/PEGS<br>RT. ANGLE MOUNT |                        |  |  |
|  |             |                         | 3 PLACES                              | ± ---  | ± .010   | SCHAFFER   | 12-12-03 |  |                        |  |  |
|  |             |                         | 2 PLACES                              | ± 0.25 | ± .015   | CHECKED BY   | DATE     |  |                        |  |  |
|  |             |                         | 1 PLACE                               | ± 0.38 | ± ---  | SAMIEC   | 12-15-03 | DOCUMENT NO.<br>SD-42892-001   |                        |  |  |
|  |             |                         | 0 PLACE                               | ±      | ±  | APPROVED BY  | DATE     |  |                        |  |  |
|  |             |                         | ANGULAR ± 1/2°                        |        |  | DRAFT WHERE APPLICABLE<br>MUST REMAIN<br>WITHIN DIMENSIONS |          | MATERIAL NO.   | SHEET NO.<br>2 OF *    |  |  |
| SIZE<br>A  |             |                         | SEE CHART                             |        | THIS DRAWING CONTAINS INFORMATION THAT IS PROPRIETARY TO MOLEX<br>INCORPORATED AND SHOULD NOT BE USED WITHOUT WRITTEN PERMISSION |  |          |  |                        |  |  |

| OPTIONS | Group        | A-42892-0002/0018 | Group        | A-42892-0080/0096 | Group        | A-42892-0097/0113 | Group        | A-42892-0019/0035 |
|---------|--------------|-------------------|--------------|-------------------|--------------|-------------------|--------------|-------------------|
|         | Header No:   | 41790-0070/0086   | Header No:   | 41790-0070/0086   | Header No:   | 41790-0070/0086   | Header No:   | 41790-0070/0086   |
|         | Pin No:      | 43294-0455        | Pin No:      | 43294-0452        | Pin No:      | 43290-0453        | Pin No:      | 43294-0456        |
|         | Plating:     | 197               | Plating:     | 208               | Plating:     | 228               | Plating:     | 241               |
|         | Pin Length L | 24.89/ .980       | Pin Length L | 24.89/ .980       | Pin Length L | 24.89/ .980       | Pin Length L | 24.89/ .980       |
|         | Mating M     | 11.43/ .450       | Mating M     | 11.43/ .450       | Mating M     | 11.43/ .450       | Mating M     | 11.43/ .450       |
|         | Gold Loc G   | N/A               | Gold Loc G   | 6.86/ .270        | Gold Loc G   | 6.86/ .270        | Gold Loc G   | 6.85/ .270        |
|         | Dim. Y       | 2.82/ .111        | Dim. Y       | 2.82/ .111        | Dim. Y       | 2.82/ .111        | Dim. Y       | 2.82/ .111        |
|         | PC Tail P    | 3.30/ .130        | PC Tail P    | 3.30/ .130        | PC Tail P    | 3.30/ .130        | PC Tail P    | 3.30/ .130        |
|         | Tin Loc T    | OVERALL           | Tin Loc T    | 4.06/ .160        | Tin Loc T    | 4.06/ .160        | Tin Loc T    | 4.06/ .160        |
|         | Voided Ckts  | NONE              | Voided Ckts  | NONE              | Voided CKts  | NONE              | Voided Ckts  | NONE              |
|         | Pack Per     | PK-42492-002      | Pack Per     | PK-42492-002      | Pack Per     | PK-42492-002      | Pack Per     | PK-42492-002      |
| Ckts    | Material No  | Engineer Number   | Material No  | Engineer Number   | Material No  | Engineer Number   | Material No  | Engineer Number   |
| 2       | 26-60-7020   | A-42892-0002      | 42892-0080   | A-42892-0080      | 42892-0097   | A-42892-0097      | 26-60-7021   | A-42892-0019      |
| 3       | 26-60-7030   | A-42892-0003      | 42892-0081   | A-42892-0081      | 42892-0098   | A-42892-0098      | 26-60-7031   | A-42892-0020      |
| 4       | 26-60-7040   | A-42892-0004      | 42892-0082   | A-42892-0082      | 42892-0099   | A-42892-0099      | 26-60-7041   | A-42892-0021      |
| 5       | 26-60-7050   | A-42892-0005      | 42892-0083   | A-42892-0083      | 42892-0100   | A-42892-0100      | 26-60-7051   | A-42892-0022      |
| 6       | 26-60-7060   | A-42892-0006      | 42892-0084   | A-42892-0084      | 42892-0101   | A-42892-0101      | 26-60-7061   | A-42892-0023      |
| 7       | 26-60-7070   | A-42892-0007      | 42892-0085   | A-42892-0085      | 42892-0102   | A-42892-0102      | 26-60-7071   | A-42892-0024      |
| 8       | 26-60-7080   | A-42892-0008      | 42892-0086   | A-42892-0086      | 42892-0103   | A-42892-0103      | 26-60-7081   | A-42892-0025      |
| 9       | 26-60-7090   | A-42892-0009      | 42892-0087   | A-42892-0087      | 42892-0104   | A-42892-0104      | 26-60-7091   | A-42892-0026      |
| 10      | 26-60-7100   | A-42892-0010      | 42892-0088   | A-42892-0088      | 42892-0105   | A-42892-0105      | 26-60-7101   | A-42892-0027      |
| 11      | 26-60-7110   | A-42892-0011      | 42892-0089   | A-42892-0089      | 42892-0106   | A-42892-0106      | 26-60-7111   | A-42892-0028      |
| 12      | 26-60-7120   | A-42892-0012      | 42892-0090   | A-42892-0090      | 42892-0107   | A-42892-0107      | 26-60-7121   | A-42892-0029      |

|   |  |   |                               |
|---|--|---|-------------------------------|
| REV:<br><b>H1</b>                       | ECR/ECN INFORMATION                    | TITLE:<br><b>FRICITION LOCK HDR. ASSY.<br/>.156 BENT SQ PINS W/PEGS<br/>RT. ANGLE MOUNT</b> | SHEET No.                     |
|   | EC NO: <b>UCP2012-2562</b>             |   | <b>- 3 -</b>                  |
|   | DATE <b>3/2/2012</b>                   |   |                               |
| DOCUMENT NUMBER:<br><b>SD-42892-001</b> | CREATED / REVISED BY:<br><b>AELHAG</b> | CHECKED BY:<br><b>MKIPPER</b>   | APPROVED BY:<br><b>FSMITH</b> |

|         |              |                   |              |                   |              |                   |              |                    |
|---------|--------------|-------------------|--------------|-------------------|--------------|-------------------|--------------|--------------------|
| OPTIONS | Group        | A-42892-0036/0052 | Group        | A-42892-0053/0067 | Group        | A-42892-0068/0079 | Group        | A-42892-0114/0118  |
|         | Header No:   | 41790-0070/0086   | Header No:   | 41790-0070/0086   | Header No:   | 41790-0070/0086   | Header No:   | 41790-0070/0086    |
|         | Pin No:      | 43294-0455        | Pin No:      | 43294-0455        | Pin No:      | 43294-0455        | Pin No:      | 43294-0455         |
|         | Plating:     | 197               | Plating:     | 197               | Plating:     | 197               | Plating:     | 197                |
|         | Pin Length L | 24.89/ .980       | Pin Length L | 24.89/ .980       | Pin Length L | 24.89/ .980       | Pin Length L | 24.89/ .980        |
|         | Mating M     | 11.43/ .450       | Mating M     | 11.43/ .450       | Mating M     | 11.43/ .450       | Mating M     | 11.43/ .450        |
|         | Gold Loc G   | N/A               | Gold Loc G   | N/A               | Gold Loc G   | N/A               | Gold Loc G   | N/A                |
|         | Dim. Y       | 2.82/ .111        | Dim. Y       | 2.82/ .111        | Dim. Y       | 2.82/ .111        | Dim. Y       | 2.82/ .111         |
|         | PC Tail P    | 3.30/ .130        | PC Tail P    | 3.30/ .130        | PC Tail P    | 3.30/ .130        | PC Tail P    | 3.30/ .130         |
|         | Tin Loc T    | OVERALL           | Tin Loc T    | OVERALL           | Tin Loc T    | OVERALL           | Tin Loc T    | OVERALL            |
|         | Voided Ckts  | 2                 | Voided Ckts  | 4                 | Voided CKts  | 7                 | Voided Ckts  | 2, 4, 6, 8, 10, 14 |
|         | Pack Per     | PK-42492-002      | Pack Per     | PK-42492-002      | Pack Per     | PK-42492-002      | Pack Per     | PK-42492-002       |
| Ckts    | Material No  | Engineer Number   | Material No  | Engineer Number   | Material No  | Engineer Number   | Material No  | Engineer Number    |
| 2       | 26-62-7020   | A-42892-0036      |              |                   |              |                   |              |                    |
| 3       | 26-62-7030   | A-42892-0037      |              |                   |              |                   |              |                    |
| 4       | 26-62-7040   | A-42892-0038      | 26-62-7041   | A-42892-0053      |              |                   |              |                    |
| 5       | 26-62-7050   | A-42892-0039      | 26-62-7051   | A-42892-0054      |              |                   |              |                    |
| 6       | 26-62-7060   | A-42892-0040      | 26-62-7061   | A-42892-0055      |              |                   |              |                    |
| 7       | 26-62-7070   | A-42892-0041      | 26-62-7071   | A-42892-0056      | 26-62-7072   | A-42892-0068      |              |                    |
| 8       | 26-62-7080   | A-42892-0042      | 26-62-7081   | A-42892-0057      | 26-62-7082   | A-42892-0069      |              |                    |
| 9       | 26-62-7090   | A-42892-0043      | 26-62-7091   | A-42892-0058      | 26-62-7092   | A-42892-0070      |              |                    |
| 10      | 26-62-7100   | A-42892-0044      | 26-62-7101   | A-42892-0059      | 26-62-7102   | A-42892-0071      |              |                    |
| 11      | 26-62-7110   | A-42892-0045      | 26-62-7111   | A-42892-0060      | 26-62-7112   | A-42892-0072      |              |                    |
| 12      | 26-62-7120   | A-42892-0046      | 26-62-7121   | A-42892-0061      | 26-62-7122   | A-42892-0073      |              |                    |

|                              |   |   |   |   |
|------------------------------|---|---|---|---|
| <b>REV:</b><br><br><b>H1</b> | <u>ECR/ECN INFORMATION</u><br>EC NO: <b>UCP2012-2562</b><br>DATE <b>3/2/2012</b>  | <u>TITLE:</u><br><p style="text-align: center;"><b>FRICITION LOCK HDR. ASSY.<br/>                 .156 BENT SQ PINS W/PEGS<br/>                 RT. ANGLE MOUNT</b></p> | <u>SHEET No.</u><br><br><p style="text-align: center;"><b>- 4 -</b></p> |   |
|                              | <u>DOCUMENT NUMBER:</u><br><p style="text-align: center;"><b>SD-42892-001</b></p> | <u>CREATED / REVISED BY:</u><br><p style="text-align: center;"><b>AELHAG</b></p>  | <u>CHECKED BY:</u><br><p style="text-align: center;"><b>MKIPPER</b></p> | <u>APPROVED BY:</u><br><p style="text-align: center;"><b>FSMITH</b></p> |

|         |              |                   |              |                   |              |                 |              |                 |
|---------|--------------|-------------------|--------------|-------------------|--------------|-----------------|--------------|-----------------|
| OPTIONS | Group        | A-42892-0119/0133 | Group        | A-42892-0134/0144 | Group        |                 | Group        |                 |
|         | Header No:   | 41790-0070/0086   | Header No:   | 41790-0076/0086   | Header No:   |                 | Header No:   |                 |
|         | Pin No:      | 43294-0455        | Pin No:      | 43294-0455        | Pin No:      |                 | Pin No:      |                 |
|         | Plating:     | 197               | Plating:     | 197               | Plating:     |                 | Plating:     |                 |
|         | Pin Length L | 24.89/ .980       | Pin Length L | 24.89/ .980       | Pin Length L |                 | Pin Length L |                 |
|         | Mating M     | 11.43/ .450       | Mating M     | 11.43/ .450       | Mating M     |                 | Mating M     |                 |
|         | Gold Loc G   | N/A               | Gold Loc G   | N/A               | Gold Loc G   |                 | Gold Loc G   |                 |
|         | Dim. Y       | 2.82/ .111        | Dim. Y       | 2.82/ .111        | Dim. Y       |                 | Dim. Y       |                 |
|         | PC Tail P    | 3.30/ .130        | PC Tail P    | 3.30/ .130        | PC Tail P    |                 | PC Tail P    |                 |
|         | Tin Loc T    | OVERALL           | Tin Loc T    | OVERALL           | Tin Loc T    |                 | Tin Loc T    |                 |
|         | Voided Ckts  | 2, 4              | Voided Ckts  | 2,4,6,8           | Voided CKts  |                 | Voided Ckts  |                 |
|         | Pack Per     | PK-42492-002      | Pack Per     | PK-42492-002      | Pack Per     |                 | Pack Per     |                 |
| Ckts    | Material No  | Engineer Number   | Material No  | Engineer Number   | Material No  | Engineer Number | Material No  | Engineer Number |
| 2       |              |                   |              |                   |              |                 |              |                 |
| 3       |              |                   |              |                   |              |                 |              |                 |
| 4       | 42892-0119   | A-42892-0119      |              |                   |              |                 |              |                 |
| 5       | 42892-0120   | A-42892-0120      |              |                   |              |                 |              |                 |
| 6       | 42892-0121   | A-42892-0121      |              |                   |              |                 |              |                 |
| 7       | 42892-0122   | A-42892-0122      |              |                   |              |                 |              |                 |
| 8       | 42892-0123   | A-42892-0123      | 42892-0134   | A-42892-0134      |              |                 |              |                 |
| 9       | 42892-0124   | A-42892-0124      | 42892-0135   | A-42892-0135      |              |                 |              |                 |
| 10      | 42892-0125   | A-42892-0125      | 42892-0136   | A-42892-0136      |              |                 |              |                 |
| 11      | 42892-0126   | A-42892-0126      | 42892-0137   | A-42892-0137      |              |                 |              |                 |
| 12      | 42892-0127   | A-42892-0127      | 42892-0138   | A-42892-0138      |              |                 |              |                 |

|                     |      |                            |                |   |              |
|---------------------|------|----------------------------|----------------|---|--------------|
| <b>H1</b>           | REV: | ECR/ECN INFORMATION        | TITLE:         | <b>FRICITION LOCK HDR. ASSY.<br/>.156 BENT SQ PINS W/PEGS<br/>RT. ANGLE MOUNT</b> | SHEET No.    |
|                     |      | EC NO: <b>UCP2012-2562</b> |                |   | <b>- 5 -</b> |
|                     |      | DATE <b>3/2/2012</b>       |                |   |              |
| DOCUMENT NUMBER:    |      | CREATED / REVISED BY:      | CHECKED BY:    | APPROVED BY:  |              |
| <b>SD-42892-001</b> |      | <b>AELHAG</b>              | <b>MKIPPER</b> | <b>FSMITH</b>   |              |



Компания «ЭлектроПласт» предлагает заключение долгосрочных отношений при поставках импортных электронных компонентов на взаимовыгодных условиях!

Наши преимущества:

- Оперативные поставки широкого спектра электронных компонентов отечественного и импортного производства напрямую от производителей и с крупнейших мировых складов;
- Поставка более 17-ти миллионов наименований электронных компонентов;
- Поставка сложных, дефицитных, либо снятых с производства позиций;
- Оперативные сроки поставки под заказ (от 5 рабочих дней);
- Экспресс доставка в любую точку России;
- Техническая поддержка проекта, помощь в подборе аналогов, поставка прототипов;
- Система менеджмента качества сертифицирована по Международному стандарту ISO 9001;
- Лицензия ФСБ на осуществление работ с использованием сведений, составляющих государственную тайну;
- Поставка специализированных компонентов (Xilinx, Altera, Analog Devices, Intersil, Interpoint, Microsemi, Aeroflex, Peregrine, Syfer, Eurofarad, Texas Instrument, Miteq, Cobham, E2V, MA-COM, Hittite, Mini-Circuits, General Dynamics и др.);

Помимо этого, одним из направлений компании «ЭлектроПласт» является направление «Источники питания». Мы предлагаем Вам помощь Конструкторского отдела:

- Подбор оптимального решения, техническое обоснование при выборе компонента;
- Подбор аналогов;
- Консультации по применению компонента;
- Поставка образцов и прототипов;
- Техническая поддержка проекта;
- Защита от снятия компонента с производства.



#### Как с нами связаться

**Телефон:** 8 (812) 309 58 32 (многоканальный)

**Факс:** 8 (812) 320-02-42

**Электронная почта:** [org@eplast1.ru](mailto:org@eplast1.ru)

**Адрес:** 198099, г. Санкт-Петербург, ул. Калинина, дом 2, корпус 4, литера А.