

MOUNTING HARDWARE

WASHERS

| Part Number | Description | Figure Number | Dimensions (Inches) | | | | |
|-------------|--|---------------|---------------------|--------|-------|-------|-------|
| | | | A | B | C | D | E |
| M-1018 | Rigid Plastic Washer | 3 | 5/8" | .384" | 1/16" | 1/32" | 1/2" |
| P-1014-9 | Internal Tooth Lockwasher | 1 | 1/2" | 3/8" | .022" | | |
| P-1025 | Internal Tooth Lockwasher | 1 | 11/16" | 3/8" | .035" | | |
| P-1060-3 | Internal Tooth Lockwasher | 1 | 39/64" | 15/32" | .018" | | |
| P-1060-9 | Internal Tooth Lockwasher | 1 | 39/64" | 15/32" | .018" | | |
| P-1063-9 | Steel Lockring Washer iridite finish over cadmium. Used as non-turn device on Series 16000 Telever Switch and R3000 and R13000 Lev-R-Switches. | 4 | See Drawing | | | | |
| P-1475-3 | Internal Tooth Lockwasher, Steel, Cadmium-Plated | 1 | 13/32" | 17/64" | .018" | | |
| P-1476-1 | Flat Washer - Brass - Nickel-Plated | 2 | 5/8" | 15/32" | .020" | | |
| P-1617 | Rigid Plastic Washer | 2 | 5/16" | .195" | 1/64" | | |
| P-1618 | Swedged Fiber Washer | 3 | 11/32" | .193" | 1/32" | | |
| P-1716 | Round Flat Plain Washer | 2 | 1 1/16" | .828" | .031" | 1/64" | .261" |
| P-1834 | Internal Tooth Lockwasher | 1 | 7/8" | .650" | .022" | | |
| P-1971 | Internal Tooth Lockwasher | 1 | 1/2" | 3/8" | .022" | | |
| P-2061 | Round Flat Plain Washer | 2 | .406" | .281" | .020" | | |
| S-1022-1 | Steel Washer Nickel-Plated | 2 | 5/8" | 3/8" | .020" | | |
| S-1028 | Rigid Plastic Washer (Brown) | 2 | 5/8" | 3/8" | .031" | | |
| S-1029 | Swedged Fiber Washer | 3 | 5/8" | 3/8" | 1/32" | | |
| S-1045-1 | Copper Alloy Washer Nickel-Plated | 2 | 5/8" | 3/8" | .020" | 1/32" | 7/16" |
| S-1078 | Swedged Grey Fiber Washer | 3 | 5/8" | 3/8" | 3/64" | | |
| S-1564 | Swedged Grey Fiber Washer | 3 | 7/16" | 1/4" | 1/32" | 1/32" | 5/16" |
| S-1790-1 | Steel Washer Nickel-Plated | 2 | 7/16" | 1/4" | .015" | .025" | 5/16" |
| S2207 | Rigid Plastic Washer | 2 | 7/16" | 9/32" | .025" | | |
| S-2957 | Brass Washer Nickel-Plated | 2 | 5/16" | 13/64" | .010" | | |
| S-3727 | Steel Flat Washer Cadmium-Plated | 2 | 7/8" | .630" | 1/32" | | |
| S-3997 | Steel Washer Nickel-Plated | 2 | 23/64" | 1/4" | 1/64" | | |
| S-4263 | Vulcanized Insulating Washer | 3 | .495" | .317" | .037" | .039" | .370" |

SCREW AND TERMINAL

| | | | | | | | |
|----------|--|---|-------------|--|--|--|--|
| P-1069-5 | Copper alloy solder terminal tinned for use with P-1070 | 6 | See Drawing | | | | |
| P-1070 | screw below. Copper alloy terminal screws No. 2-64 for MIL-type plugs such as PJ-047, PJ-051 and PJ-055. | 5 | See Drawing | | | | |

NUTS

| | | | | | | | |
|----------|---|----|-------------|--------|-------|------------------|--|
| P-1000 | Copper Alloy Locknut (Natural) | 7 | 1/2" | 3/8" | 3/32" | (3/8"-32 Thd.) | |
| P-1000-1 | Copper Alloy Locknut Nickel-Plated | 7 | 1/2" | 3/8" | 3/32" | (3/8"-32 Thd.) | |
| P-1009-1 | Copper Alloy Knurled Nut Nickel-Plated | 8 | 1/2" | 3/8" | 1/16" | (3/8"-32 Thd.) | |
| P-1053-1 | Copper Alloy Locknut Nickel-Plated | 7 | 9/16" | 15/32" | 1/16" | (15/32"-32 Thd.) | |
| P-1064-1 | Copper Alloy Locknut Nickel-Plated | 7 | 9/16" | 3/8" | 3/32" | (3/8"-32 Thd.) | |
| P-1150-1 | Copper Alloy Locknut Nickel-Plated | 7 | 3/8" | 1/4" | 1/16" | (1/4"-32 Thd.) | |
| P-1378-1 | Copper Alloy Knurled Nut Nickel-Plated | 8 | 3/8" | 1/4" | 1/16" | (1/4"-32 Thd.) | |
| P-1648 | Steel Locknut Cadmium-Plated | 7 | 3/4" | 5/8" | 3/32" | (5/8"-27 Thd.) | |
| P-1717 | Copper Alloy Locknut Nickel-Plated | 7 | 5/16" | 13/16" | 1/8" | (13/16"-20 Thd.) | |
| P-1970 | Aluminum Knurled Nut - Black | 8 | 1/2" | 3/8" | 1/16" | (3/8"-32 Thd.) | |
| P-1975 | Copper Alloy Locknut Nickel-Plated | 7 | 5/16" | 1/4" | 1/16" | (1/4"-32 Thd.) | |
| P-2060 | Copper Alloy Locknut Nickel-Plated | 7 | 11/32" | 9/32" | 1/16" | (9/32"-32 Thd.) | |
| P-2417 | Copper Alloy Decor Nut Satin Chrome | 11 | .730" | .344" | .171" | (15/32"-32 Thd.) | |
| P-2437 | Copper Alloy Decor Nut Brass Nickel-Plated | 11 | .740" | .344" | .181" | (15/32"-32 Thd.) | |
| T-1064-1 | Copper Alloy Hex-Shoulder Locknut Nickel-Plated | 9 | See Drawing | | | | |
| T-1071-1 | Copper Alloy Knurled Locknut Nickel-Plated | 8 | 5/8" | 15/32" | 3/32" | (15/32"-32 Thd.) | |
| T-2160 | Copper Alloy Knurled Nut Nickel-Plated | 8 | 13/32" | 5/16" | 1/16" | (5/16-32 Thd.) | |

CLAMPS

| | | | | | |
|--------|-----------------|----|-------|-------|-------|
| P-2380 | Steel "U" Clamp | 12 | .335" | 7/32" | .188" |
| P-2381 | Steel "U" Clamp | 12 | .313" | 7/32" | .188" |

 DIMENSIONS ARE FOR REFERENCE ONLY $\frac{\text{Inch}}{\text{(mm)}}$

NOTE: Contact your Switchcraft Representative for price and delivery.

All products shown in this catalog are covered by Switchcraft's limited lifetime warranty

© Registered trademark of Switchcraft, Inc.

MOUNTING HARDWARE

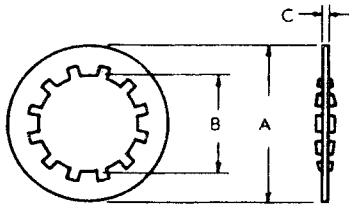


Figure 1



Figure 2

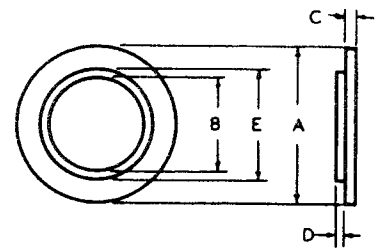


Figure 3

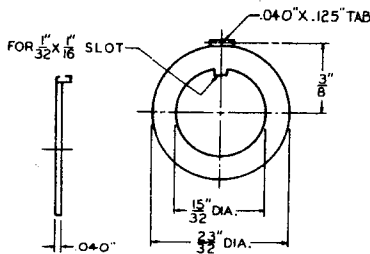


Figure 4

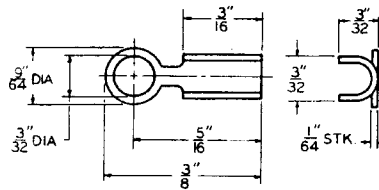


Figure 5

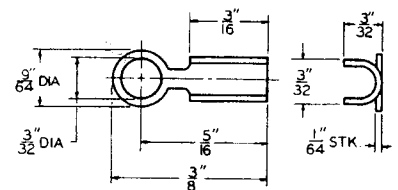


Figure 6

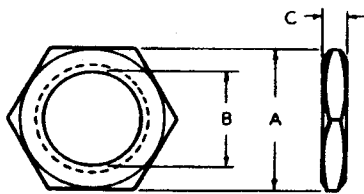


Figure 7

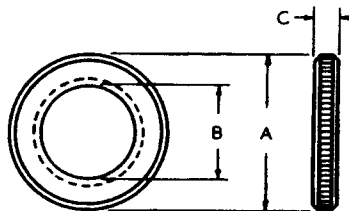


Figure 8

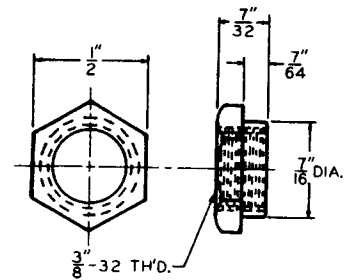


Figure 9

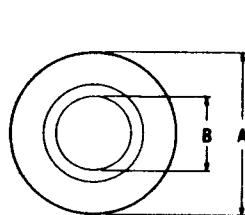


Figure 11

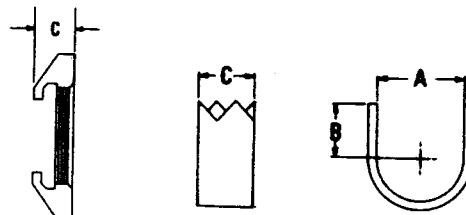


Figure 12

DIMENSIONS ARE FOR REFERENCE ONLY $\frac{\text{Inch}}{\text{(mm)}}$

NOTE: Contact your Switchcraft Representative for price and delivery.

All products shown in this catalog are covered by Switchcraft's limited lifetime warranty

® Registered trademark of Switchcraft, Inc.



Компания «ЭлектроПласт» предлагает заключение долгосрочных отношений при поставках импортных электронных компонентов на взаимовыгодных условиях!

Наши преимущества:

- Оперативные поставки широкого спектра электронных компонентов отечественного и импортного производства напрямую от производителей и с крупнейших мировых складов;
- Поставка более 17-ти миллионов наименований электронных компонентов;
- Поставка сложных, дефицитных, либо снятых с производства позиций;
- Оперативные сроки поставки под заказ (от 5 рабочих дней);
- Экспресс доставка в любую точку России;
- Техническая поддержка проекта, помощь в подборе аналогов, поставка прототипов;
- Система менеджмента качества сертифицирована по Международному стандарту ISO 9001;
- Лицензия ФСБ на осуществление работ с использованием сведений, составляющих государственную тайну;
- Поставка специализированных компонентов (Xilinx, Altera, Analog Devices, Intersil, Interpoint, Microsemi, Aeroflex, Peregrine, Syfer, Eurofarad, Texas Instrument, Miteq, Cobham, E2V, MA-COM, Hittite, Mini-Circuits, General Dynamics и др.);

Помимо этого, одним из направлений компании «ЭлектроПласт» является направление «Источники питания». Мы предлагаем Вам помощь Конструкторского отдела:

- Подбор оптимального решения, техническое обоснование при выборе компонента;
- Подбор аналогов;
- Консультации по применению компонента;
- Поставка образцов и прототипов;
- Техническая поддержка проекта;
- Защита от снятия компонента с производства.



Как с нами связаться

Телефон: 8 (812) 309 58 32 (многоканальный)

Факс: 8 (812) 320-02-42

Электронная почта: org@eplast1.ru

Адрес: 198099, г. Санкт-Петербург, ул. Калинина, дом 2, корпус 4, литера А.