

### FEATURES

- 4 ADCs in one package
- JESD204 coded serial digital outputs
- On-chip temperature sensor
- 95 dB channel-to-channel crosstalk
- SNR: 65 dBFS with AIN = 85 MHz at 210 MSPS
- SFDR: 77 dBc with AIN = 85 MHz at 210 MSPS
- Excellent linearity
  - DNL:  $\pm 0.28$  LSB (typical)
  - INL:  $\pm 0.7$  LSB (typical)
- 780 MHz full power analog bandwidth
- Power dissipation: 325 mW per channel at 210 MSPS
- 1.25 V p-p input voltage range, adjustable up to 1.5 V p-p
- 1.8 V supply operation
- Clock duty cycle stabilizer
- Serial port interface features
  - Power-down modes
  - Digital test pattern enable
  - Programmable header
  - Programmable pin functions (PGMx, PDWN)

### APPLICATIONS

- Communication receivers
- Cable head end equipment/M-CMTS
- Broadband radios
- Wireless infrastructure transceivers
- Radar/military-aerospace subsystems
- Test equipment

### GENERAL DESCRIPTION

The AD9639 is a quad, 12-bit, 210 MSPS analog-to-digital converter (ADC) with an on-chip temperature sensor and a high speed serial interface. It is designed to support the digitizing of high frequency, wide dynamic range signals with an input bandwidth of up to 780 MHz. The output data is serialized and presented in packet format, consisting of channel-specific information, coded samples, and error code correction.

The ADC requires a single 1.8 V power supply. The input clock can be driven differentially with a sine wave, LVPECL, CMOS, or LVDS. A clock duty cycle stabilizer allows high performance at full speed with a wide range of clock duty cycles. The on-chip reference eliminates the need for external decoupling and can be adjusted by means of SPI control.

Various power-down and standby modes are supported. The ADC typically consumes 150 mW per channel with the digital link still in operation when standby operation is enabled.

#### Rev. A

Information furnished by Analog Devices is believed to be accurate and reliable. However, no responsibility is assumed by Analog Devices for its use, nor for any infringements of patents or other rights of third parties that may result from its use. Specifications subject to change without notice. No license is granted by implication or otherwise under any patent or patent rights of Analog Devices. Trademarks and registered trademarks are the property of their respective owners.

### FUNCTIONAL BLOCK DIAGRAM

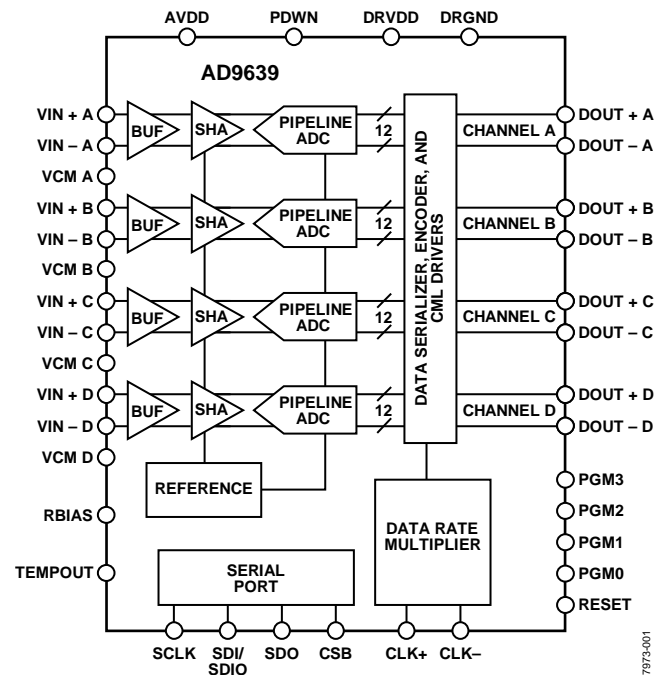


Figure 1.

Fabricated on an advanced CMOS process, the AD9639 is available in a Pb-free/RoHS-compliant, 72-lead LFCSP package. It is specified over the industrial temperature range of  $-40^{\circ}\text{C}$  to  $+85^{\circ}\text{C}$ .

### PRODUCT HIGHLIGHTS

1. Four ADCs are contained in a small, space-saving package.
2. An on-chip PLL allows users to provide a single ADC sampling clock; the PLL distributes and multiplies up to produce the corresponding data rate clock.
3. The JESD204 coded data rate supports up to 4.2 Gbps per channel.
4. The AD9639 operates from a single 1.8 V power supply.
5. Flexible synchronization schemes and programmable mode pins are available.
6. An on-chip temperature sensor is included.

## TABLE OF CONTENTS

|  |    |  |    |
|--|----|--|----|
| Features .....                                   | 1  | Theory of Operation .....                              | 17 |
| Applications.....                                | 1  | Analog Input Considerations .....                      | 17 |
| Functional Block Diagram .....                   | 1  | Clock Input Considerations.....                        | 19 |
| General Description .....                        | 1  | Digital Outputs .....                                  | 21 |
| Product Highlights .....                         | 1  | Serial Port Interface (SPI).....                       | 29 |
| Revision History .....                           | 2  | Hardware Interface.....                                | 29 |
| Specifications.....                              | 3  | Memory Map .....                                       | 31 |
| AC Specifications.....                           | 4  | Reading the Memory Map Table.....                      | 31 |
| Digital Specifications .....                     | 5  | Reserved Locations .....                               | 31 |
| Switching Specifications .....                   | 6  | Default Values .....                                   | 31 |
| Timing Diagram .....                             | 7  | Logic Levels.....                                      | 31 |
| Absolute Maximum Ratings.....                    | 8  | Applications Information .....                         | 35 |
| Thermal Resistance .....                         | 8  | Power and Ground Recommendations .....                 | 35 |
| ESD Caution.....                                 | 8  | Exposed Paddle Thermal Heat Slug Recommendations ..... | 35 |
| Pin Configuration and Function Descriptions..... | 9  | Outline Dimensions .....                               | 36 |
| Typical Performance Characteristics .....        | 11 | Ordering Guide .....                                   | 36 |
| Equivalent Circuits .....                        | 15 |  |    |

## REVISION HISTORY

### 2/10—Rev. 0 to Rev. A

|   |    |
|---|----|
| Changes to Differential Input Voltage Range Parameter,<br>Table 1 ..... | 3  |
| Changes to Table 7.....   | 9  |
| Changes to Digital Outputs and Timing Section .....                     | 25 |
| Change to Addr. (Hex) 0x01, Table 15.....                               | 32 |

### 5/09—Revision 0: Initial Version

## SPECIFICATIONS

AVDD = 1.8 V, DRVDD = 1.8 V, T<sub>MIN</sub> = -40°C, T<sub>MAX</sub> = +85°C, 1.25 V p-p differential input, AIN = -1.0 dBFS, DCS enabled, unless otherwise noted.

Table 1.

| Parameter <sup>1</sup>                                | Temp | AD9639BCPZ-170 |            |       | AD9639BCPZ-210 |            |       | Unit  |
|---|------|----------------|------------|-------|----------------|------------|-------|-------|
|   |      | Min            | Typ        | Max   | Min            | Typ        | Max   |       |
| RESOLUTION  |      | 12             |            |       | 12             |            |       | Bits  |
| ACCURACY  |      |                |            |       |                |            |       |       |
| No Missing Codes                                      | Full |                | Guaranteed |       |                | Guaranteed |       |       |
| Offset Error  | 25°C |                | -2         | ±12   |                | -2         | ±12   | mV    |
| Offset Matching                                       | 25°C |                | 4          | 12    |                | 4          | 12    | mV    |
| Gain Error  | 25°C | -2.8           | +1         | +4.7  | -2.8           | +1         | +4.7  | % FS  |
| Gain Matching   | 25°C |                | 0.9        | 2.7   |                | 0.9        | 2.7   | % FS  |
| Differential Nonlinearity (DNL)                       | Full |                | ±0.28      | ±0.6  |                | ±0.28      | ±0.6  | LSB   |
| Integral Nonlinearity (INL)                           | Full |                | ±0.45      | ±0.9  |                | ±0.7       | ±1.3  | LSB   |
| ANALOG INPUTS   |      |                |            |       |                |            |       |       |
| Differential Input Voltage Range <sup>2</sup>         | Full | 1.0            | 1.25       | 1.5   | 1.0            | 1.25       | 1.5   | V p-p |
| Common-Mode Voltage                                   | Full |                | 1.4        |       |                | 1.4        |       | V     |
| Input Capacitance                                     | 25°C |                | 2          |       |                | 2          |       | pF    |
| Input Resistance                                      | Full |                | 4.3        |       |                | 4.3        |       | kΩ    |
| Analog Bandwidth, Full Power                          | Full |                | 780        |       |                | 780        |       | MHz   |
| Voltage Common Mode (VCM x Pins)                      |      |                |            |       |                |            |       |       |
| Voltage Output  | Full | 1.4            | 1.44       | 1.5   | 1.4            | 1.44       | 1.5   | V     |
| Current Drive   | Full |                | 1          |       |                | 1          |       | mA    |
| TEMPERATURE SENSOR OUTPUT                             |      |                |            |       |                |            |       |       |
| Voltage Output  | Full |                | -1.12      |       |                | -1.12      |       | mV/°C |
| Current Drive   | Full |                | 739        |       |                | 737        |       | mV    |
|   | Full |                | 10         |       |                | 10         |       | μA    |
| POWER SUPPLY  |      |                |            |       |                |            |       |       |
| AVDD  | Full | 1.7            | 1.8        | 1.9   | 1.7            | 1.8        | 1.9   | V     |
| DRVDD   | Full | 1.7            | 1.8        | 1.9   | 1.7            | 1.8        | 1.9   | V     |
| I <sub>AVDD</sub>                                     | Full |                | 535        | 570   |                | 610        | 650   | mA    |
| I <sub>DRVDD</sub>                                    | Full |                | 98         | 105   |                | 111        | 120   | mA    |
| Total Power Dissipation<br>(Including Output Drivers) | Full |                | 1.139      | 1.215 |                | 1.298      | 1.386 | W     |
| Power-Down Dissipation                                | Full |                | 3          |       |                | 3          |       | mW    |
| Standby Dissipation <sup>2</sup>                      | Full |                | 152        |       |                | 173        |       | mW    |
| CROSSTALK   | Full |                |            |       |                |            |       |       |
| Overrange Condition <sup>3</sup>                      | Full |                | -95        |       |                | -95        |       | dB    |
|   | Full |                | -90        |       |                | -90        |       | dB    |

<sup>1</sup> See the AN-835 Application Note, *Understanding High Speed ADC Testing and Evaluation*, for definitions and details on how these tests were completed.

<sup>2</sup> AVDD/DRVDD, with link established.

<sup>3</sup> Overrange condition is specified as 6 dB above the full-scale input range.

# AD9639

## AC SPECIFICATIONS

AVDD = 1.8 V, DRVDD = 1.8 V, T<sub>MIN</sub> = -40°C, T<sub>MAX</sub> = +85°C, 1.25 V p-p differential input, AIN = -1.0 dBFS, DCS enabled, unless otherwise noted.

Table 2.

| Parameter <sup>1</sup>                       | Temp | AD9639BCPZ-170 |      |      | AD9639BCPZ-210 |      |      | Unit |
|--|------|----------------|------|------|----------------|------|------|------|
|  |      | Min            | Typ  | Max  | Min            | Typ  | Max  |      |
| SIGNAL-TO-NOISE RATIO (SNR)                  | Full | 63.5           | 64.5 |      | 63.2           | 64.2 |      | dB   |
|  | 25°C |                | 64.1 |      |                | 63.2 |      | dB   |
| SIGNAL-TO-(NOISE + DISTORTION) (SINAD) RATIO | Full | 63.3           | 64.4 |      | 62.8           | 63.9 |      | dB   |
|  | 25°C |                | 63.9 |      |                | 63   |      | dB   |
| EFFECTIVE NUMBER OF BITS (ENOB)              | Full | 10.2           | 10.4 |      | 10.1           | 10.3 |      | Bits |
|  | 25°C |                | 10.3 |      |                | 10.2 |      | Bits |
| WORST HARMONIC (SECOND)                      | Full |                | 87.5 | 78.6 |                | 86   | 77   | dBc  |
|  | 25°C |                | 82   |      |                | 80   |      | dBc  |
| WORST HARMONIC (THIRD)                       | Full |                | 79   | 74   |                | 76   | 72.6 | dBc  |
|  | 25°C |                | 84   |      |                | 77   |      | dBc  |
| WORST OTHER (EXCLUDING SECOND OR THIRD)      | Full |                | 96   | 86   |                | 90   | 83.7 | dBc  |
|  | 25°C |                | 88   |      |                | 88   |      | dBc  |
| TWO-TONE INTERMODULATION DISTORTION (IMD)    | 25°C |                | 78   |      |                | 77   |      | dBc  |
|  | 25°C |                |      |      |                | 77   |      | dBc  |

<sup>1</sup> See the AN-835 Application Note, *Understanding High Speed ADC Testing and Evaluation*, for definitions and details on how these tests were completed.

<sup>2</sup> Tested at 170 MSPS and 210 MSPS.

**DIGITAL SPECIFICATIONS**

AVDD = 1.8 V, DRVDD = 1.8 V, T<sub>MIN</sub> = -40°C, T<sub>MAX</sub> = +85°C, 1.25 V p-p differential input, AIN = -1.0 dBFS, DCS enabled, unless otherwise noted.

**Table 3.**

| Parameter <sup>1</sup>   | Temp | AD9639BCPZ-170   |         |               | AD9639BCPZ-210   |         |               | Unit  |
|--|------|------------------|---------|---------------|------------------|---------|---------------|-------|
|  |      | Min              | Typ     | Max           | Min              | Typ     | Max           |       |
| CLOCK INPUTS (CLK+, CLK-)  |      |                  |         |               |                  |         |               |       |
| Logic Compliance   | Full | LVPECL/LVDS/CMOS |         |               | LVPECL/LVDS/CMOS |         |               |       |
| Differential Input Voltage   | Full | 0.2              |         | 6             | 0.2              |         | 6             | V p-p |
| Input Voltage Range  | Full | AVDD -<br>0.3    |         | AVDD +<br>1.6 | AVDD -<br>0.3    |         | AVDD +<br>1.6 |       |
| Internal Common-Mode Bias  | Full |                  | 1.2     |               |                  | 1.2     |               | V     |
| Input Common-Mode Voltage  | Full | 1.1              |         | AVDD          | 1.1              |         | AVDD          | V     |
| High Level Input Voltage (V <sub>IH</sub> )                        | Full | 1.2              |         | 3.6           | 1.2              |         | 3.6           | V     |
| Low Level Input Voltage (V <sub>IL</sub> )                         | Full | 0                |         | 0.8           | 0                |         | 0.8           | V     |
| High Level Input Current (I <sub>IH</sub> )                        | Full | -10              |         | +10           | -10              |         | +10           | μA    |
| Low Level Input Current (I <sub>IL</sub> )                         | Full | -10              |         | +10           | -10              |         | +10           | μA    |
| Differential Input Resistance                                      | 25°C | 16               | 20      | 24            | 16               | 20      | 24            | kΩ    |
| Input Capacitance  | 25°C |                  | 4       |               |                  | 4       |               | pF    |
| LOGIC INPUTS (PDWN, CSB, SDI/SDIO, SCLK, RESET, PGMx) <sup>2</sup> |      |                  |         |               |                  |         |               |       |
| Logic 1 Voltage  | Full | 0.8 ×<br>AVDD    |         |               | 0.8 ×<br>AVDD    |         |               | V     |
| Logic 0 Voltage  | Full |                  |         | 0.2 ×<br>AVDD |                  |         | 0.2 ×<br>AVDD | V     |
| Logic 1 Input Current (CSB)  | Full |                  | 0       |               |                  | 0       |               | μA    |
| Logic 0 Input Current (CSB)  | Full |                  | -60     |               |                  | -60     |               | μA    |
| Logic 1 Input Current<br>(PDWN, SDI/SDIO, SCLK,<br>RESET, PGMx)    | Full |                  | 55      |               |                  | 55      |               | μA    |
| Logic 0 Input Current<br>(PDWN, SDI/SDIO, SCLK,<br>RESET, PGMx)    | Full |                  | 0       |               |                  | 0       |               | μA    |
| Input Resistance   | 25°C |                  | 30      |               |                  | 30      |               | kΩ    |
| Input Capacitance  | 25°C |                  | 4       |               |                  | 4       |               | pF    |
| LOGIC OUTPUT (SDO)   |      |                  |         |               |                  |         |               |       |
| Logic 1 Voltage  | Full | 1.2              |         | AVDD +<br>0.3 | 1.2              |         | AVDD +<br>0.3 | V     |
| Logic 0 Voltage  | Full | 0                |         | 0.3           | 0                |         | 0.3           | V     |
| DIGITAL OUTPUTS (DOUT + x, DOUT - x)                               |      |                  |         |               |                  |         |               |       |
| Logic Compliance   |      |                  | CML     |               |                  | CML     |               |       |
| Differential Output Voltage  | Full |                  | 0.8     |               |                  | 0.8     |               | V     |
| Common-Mode Voltage  | Full |                  | DRVDD/2 |               |                  | DRVDD/2 |               | V     |

<sup>1</sup> See the AN-835 Application Note, *Understanding High Speed ADC Testing and Evaluation*, for definitions and details on how these tests were completed.

<sup>2</sup> Specified for 13 SDI/SDIO pins on the same SPI bus.

# AD9639

## SWITCHING SPECIFICATIONS

AVDD = 1.8 V, DRVDD = 1.8 V, T<sub>MIN</sub> = -40°C, T<sub>MAX</sub> = +85°C, 1.25 V p-p differential input, AIN = -1.0 dBFS, DCS enabled, unless otherwise noted.

Table 4.

| Parameter <sup>1</sup>                        | Temp | AD9639BCPZ-170 |                            |     | AD9639BCPZ-210 |                            |     | Unit       |
|---|------|----------------|----------------------------|-----|----------------|----------------------------|-----|------------|
|   |      | Min            | Typ                        | Max | Min            | Typ                        | Max |            |
| CLOCK   |      |                |                            |     |                |                            |     |            |
| Clock Rate                                    | Full | 100            |                            | 170 | 100            |                            | 210 | MSPS       |
| Clock Pulse Width High (t <sub>EH</sub> )     | Full | 2.65           | 2.9                        |     | 2.15           | 2.4                        |     | ns         |
| Clock Pulse Width Low (t <sub>EL</sub> )      | Full | 2.65           | 2.9                        |     | 2.15           | 2.4                        |     | ns         |
| DATA OUTPUT PARAMETERS                        |      |                |                            |     |                |                            |     |            |
| Data Output Period or UI (DOUT + x, DOUT - x) | Full |                | 1/(20 × f <sub>CLK</sub> ) |     |                | 1/(20 × f <sub>CLK</sub> ) |     | Seconds    |
| Data Output Duty Cycle                        | 25°C |                | 50                         |     |                | 50                         |     | %          |
| Data Valid Time                               | 25°C |                | 0.8                        |     |                | 0.8                        |     | UI         |
| PLL Lock Time (t <sub>LOCK</sub> )            | 25°C |                | 4                          |     |                | 4                          |     | μs         |
| Wake-Up Time (Standby)                        | 25°C |                | 250                        |     |                | 250                        |     | ns         |
| Wake-Up Time (Power-Down) <sup>2</sup>        | 25°C |                | 50                         |     |                | 50                         |     | μs         |
| Pipeline Latency                              | Full |                |                            | 40  |                |                            | 40  | CLK cycles |
| Data Rate per Channel (NRZ)                   | 25°C |                | 3.4                        |     |                | 4.2                        |     | Gbps       |
| Deterministic Jitter                          | 25°C |                | 10                         |     |                | 10                         |     | ps         |
| Random Jitter                                 | 25°C |                | 6                          |     |                | 6                          |     | ps rms     |
| Channel-to-Channel Bit Skew                   | 25°C |                | 0                          |     |                | 0                          |     | Seconds    |
| Channel-to-Channel Packet Skew <sup>3</sup>   | 25°C |                | ±1                         |     |                | ±1                         |     | CLK cycles |
| Output Rise/Fall Time                         | 25°C |                | 50                         |     |                | 50                         |     | ps         |
| TERMINATION CHARACTERISTICS                   |      |                |                            |     |                |                            |     |            |
| Differential Termination Resistance           | 25°C |                | 100                        |     |                | 100                        |     | Ω          |
| APERTURE                                      |      |                |                            |     |                |                            |     |            |
| Aperture Delay (t <sub>A</sub> )              | 25°C |                | 1.2                        |     |                | 1.2                        |     | ns         |
| Aperture Uncertainty (Jitter)                 | 25°C |                | 0.2                        |     |                | 0.2                        |     | ps rms     |
| OUT-OF-RANGE RECOVERY TIME                    | 25°C |                | 1                          |     |                | 1                          |     | CLK cycles |

<sup>1</sup> See the AN-835 Application Note, *Understanding High Speed ADC Testing and Evaluation*, for definitions and details on how these tests were completed.

<sup>2</sup> Receiver dependent.

<sup>3</sup> See the Serial Data Frame section.

TIMING DIAGRAM

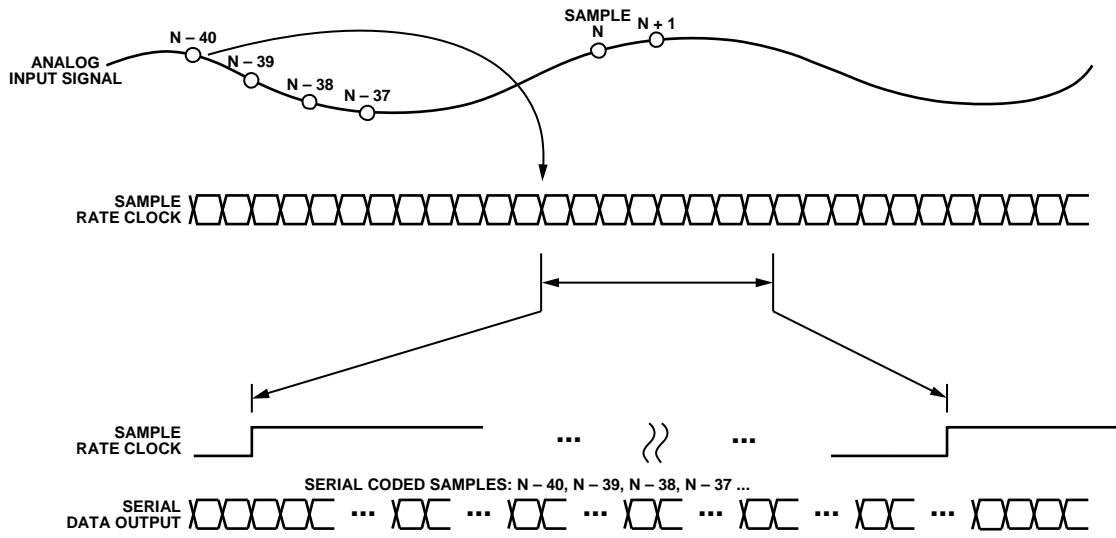


Figure 2. Timing Diagram

07973-002

## ABSOLUTE MAXIMUM RATINGS

Table 5.

| Parameter   | Rating                  |
|---|-------------------------|
| AVDD to AGND  | –0.3 V to +2.0 V        |
| DRVDD to DRGND  | –0.3 V to +2.0 V        |
| AGND to DRGND   | –0.3 V to +0.3 V        |
| AVDD to DRVDD   | –2.0 V to +2.0 V        |
| DOUT + x/DOUT – x to DRGND                                  | –0.3 V to DRVDD + 0.3 V |
| SDO, SDI/SDIO, CLK±, VIN ± x, VCM x, TEMPOUT, RBIAS to AGND | –0.3 V to AVDD + 0.3 V  |
| SCLK, CSB, PGMx, RESET, PDWN to AGND                        | –0.3 V to AVDD + 0.3 V  |
| Storage Temperature Range                                   | –65°C to +125°C         |
| Operating Temperature Range                                 | –40°C to +85°C          |
| Lead Temperature (Soldering, 10 sec)                        | 300°C                   |
| Junction Temperature  | 150°C                   |

Stresses above those listed under Absolute Maximum Ratings may cause permanent damage to the device. This is a stress rating only; functional operation of the device at these or any other conditions above those indicated in the operational section of this specification is not implied. Exposure to absolute maximum rating conditions for extended periods may affect device reliability.

## THERMAL RESISTANCE

The exposed paddle must be soldered to the ground plane for the LFCSP package. Soldering the exposed paddle to the printed circuit board (PCB) increases the reliability of the solder joints, maximizing the thermal capability of the package.

Table 6. Thermal Resistance

| Package Type            | $\theta_{JA}$ | $\theta_{JB}$ | $\theta_{JC}$ | Unit |
|-------------------------|---------------|---------------|---------------|------|
| 72-Lead LFCSP (CP-72-3) | 16.2          | 7.9           | 0.6           | °C/W |

Typical  $\theta_{JA}$ ,  $\theta_{JB}$ , and  $\theta_{JC}$  values are specified for a 4-layer board in still air. Airflow increases heat dissipation, effectively reducing  $\theta_{JA}$ . In addition, metal in direct contact with the package leads from metal traces, through holes, ground, and power planes reduces  $\theta_{JA}$ .

## ESD CAUTION

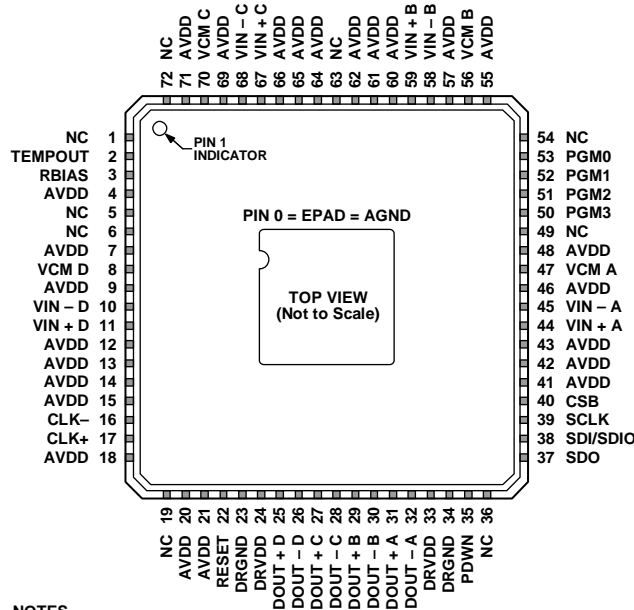


### ESD (electrostatic discharge) sensitive device.

Charged devices and circuit boards can discharge without detection. Although this product features patented or proprietary protection circuitry, damage may occur on devices subjected to high energy ESD. Therefore, proper ESD precautions should be taken to avoid performance degradation or loss of functionality.



# PIN CONFIGURATION AND FUNCTION DESCRIPTIONS



- NOTES**
1. NC = NO CONNECT.
  2. THE EXPOSED PADDLE MUST BE SOLDERED TO THE GROUND PLANE FOR THE LFCSP PACKAGE. SOLDERING THE EXPOSED PADDLE TO THE PCB INCREASES THE RELIABILITY OF THE SOLDER JOINTS, MAXIMIZING THE THERMAL CAPABILITY OF THE PACKAGE.

07873-004

Figure 3. Pin Configuration

Table 7. Pin Function Descriptions

| Pin No.   | Mnemonic | Description  |
|---|----------|--|
| 0   | AGND     | Analog Ground (Exposed Paddle). The exposed paddle must be soldered to the ground plane. Soldering the exposed paddle to the PCB increases the reliability of the solder joints, maximizing the thermal capability of the package. |
| 1, 5, 6, 19, 36, 49, 54, 63, 72   | NC       | No Connection.   |
| 2   | TEMPOUT  | Output Voltage to Monitor Temperature.   |
| 3   | RBIAS    | External Resistor to Set the Internal ADC Core Bias Current.   |
| 4, 7, 9, 12, 13, 14, 15, 18, 20, 21, 41, 42, 43, 46, 48, 55, 57, 60, 61, 62, 64, 65, 66, 69, 71 | AVDD     | 1.8 V Analog Supply.   |
| 8   | VCM D    | Common-Mode Output Voltage Reference.  |
| 10  | VIN - D  | ADC D Analog Input Complement.   |
| 11  | VIN + D  | ADC D Analog Input True.   |
| 16  | CLK-     | Clock Input Complement.  |
| 17  | CLK+     | Clock Input True.  |
| 22  | RESET    | Reset Enable Pin. Resets the digital output timing.  |
| 23, 34  | DRGND    | Digital Output Driver Ground.  |
| 24, 33  | DRVDD    | 1.8 V Digital Output Driver Supply.  |
| 25  | DOUT + D | ADC D Digital Output True.   |
| 26  | DOUT - D | ADC D Digital Output Complement.   |
| 27  | DOUT + C | ADC C Digital Output True.   |
| 28  | DOUT - C | ADC C Digital Output Complement.   |
| 29  | DOUT + B | ADC B Digital Output True.   |
| 30  | DOUT - B | ADC B Digital Output Complement.   |

# AD9639

| Pin No.        | Mnemonic                  | Description  |
|----------------|---------------------------|--|
| 31             | DOUT + A                  | ADC A Digital Output True.   |
| 32             | DOUT – A                  | ADC A Digital Output Complement.                                     |
| 35             | PDWN                      | Power-Down.  |
| 37             | SDO                       | Serial Data Output for 4-Wire SPI Interface.                         |
| 38             | SDI/SDIO                  | Serial Data Input/Serial Data Input/Output for 3-Wire SPI Interface. |
| 39             | SCLK                      | Serial Clock.  |
| 40             | CSB                       | Chip Select Bar.   |
| 44             | VIN + A                   | ADC A Analog Input True.   |
| 45             | VIN – A                   | ADC A Analog Input Complement.                                       |
| 47             | VCM A                     | Common-Mode Output Voltage Reference.                                |
| 50, 51, 52, 53 | PGM3, PGM2,<br>PGM1, PGM0 | Optional Pins to be Programmed by Customer.                          |
| 56             | VCM B                     | Common-Mode Output Voltage Reference.                                |
| 58             | VIN – B                   | ADC B Analog Input Complement.                                       |
| 59             | VIN + B                   | ADC B Analog Input True.   |
| 67             | VIN + C                   | ADC C Analog Input True.   |
| 68             | VIN – C                   | ADC C Analog Input Complement.                                       |
| 70             | VCM C                     | Common-Mode Output Voltage Reference.                                |

# TYPICAL PERFORMANCE CHARACTERISTICS

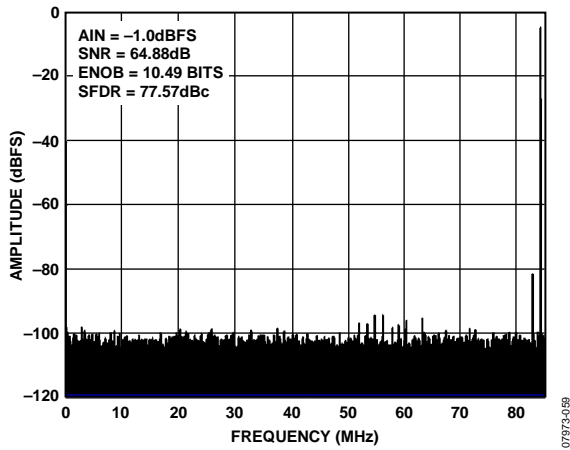


Figure 4. Single-Tone 32k FFT with  $f_{IN} = 84.3$  MHz,  $f_{SAMPLE} = 170$  MSPS

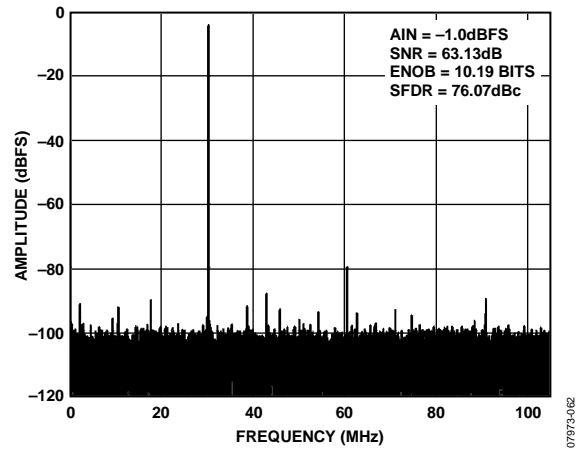


Figure 7. Single-Tone 32k FFT with  $f_{IN} = 240.3$  MHz,  $f_{SAMPLE} = 210$  MSPS

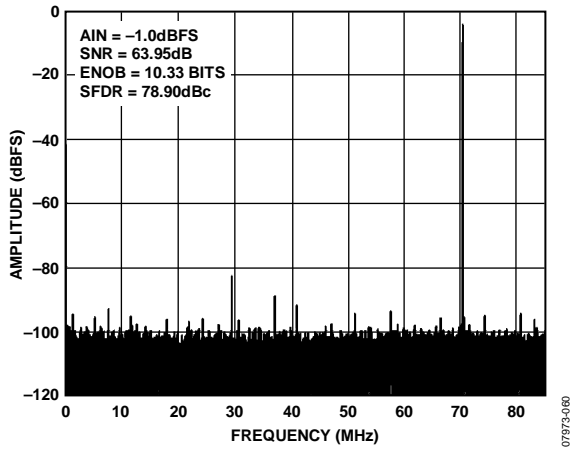


Figure 5. Single-Tone 32k FFT with  $f_{IN} = 240.3$  MHz,  $f_{SAMPLE} = 170$  MSPS

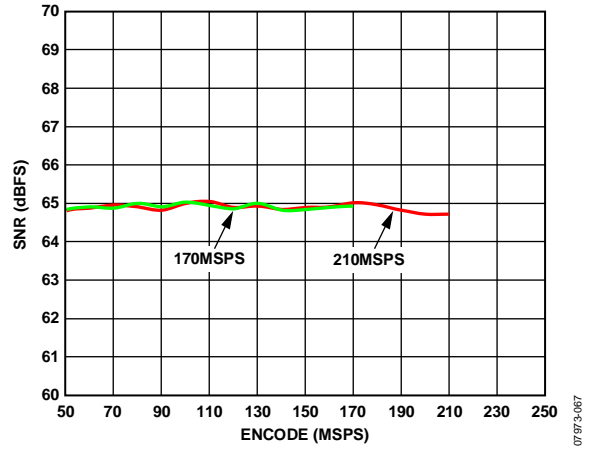


Figure 8. SNR vs. Encode,  $f_{IN} = 84.3$  MHz

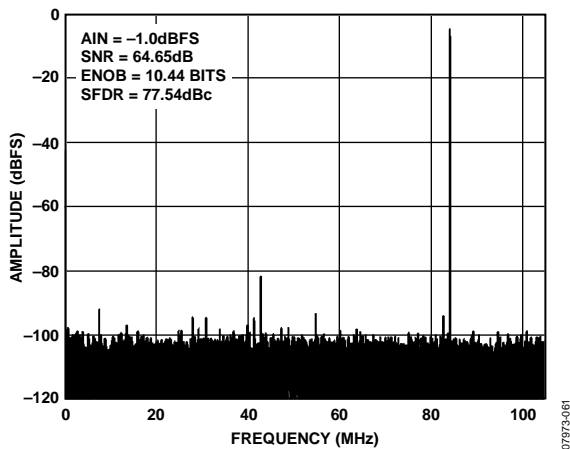


Figure 6. Single-Tone 32k FFT with  $f_{IN} = 84.3$  MHz,  $f_{SAMPLE} = 210$  MSPS

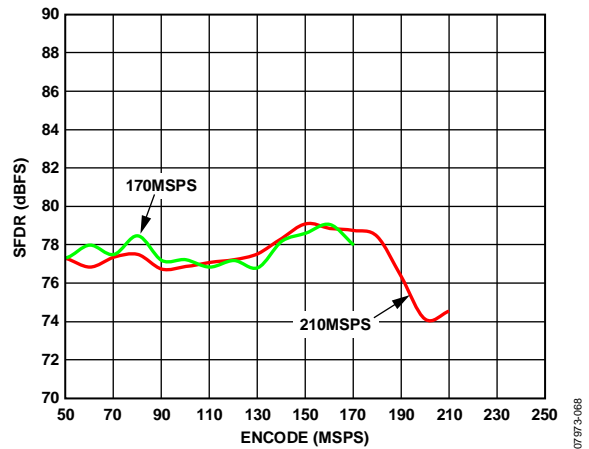


Figure 9. SFDR vs. Encode,  $f_{IN} = 84.3$  MHz

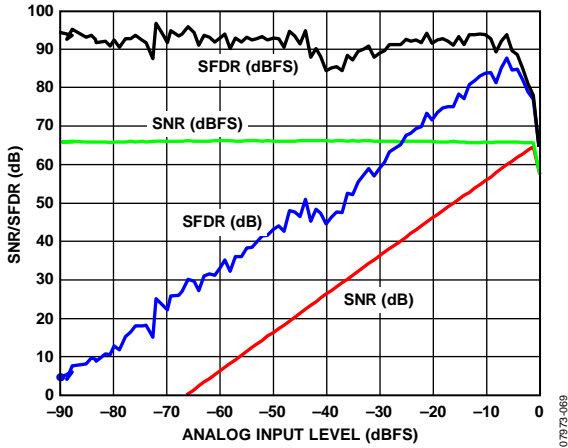


Figure 10. SNR/SFDR vs. Analog Input Level,  $f_{IN} = 84.3$  MHz,  $f_{SAMPLE} = 170$  MSPS

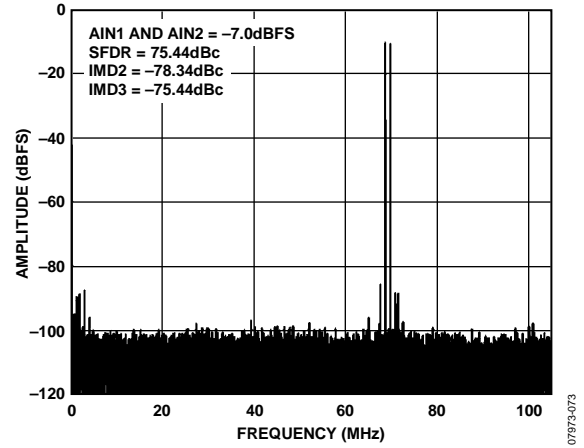


Figure 13. Two-Tone 32k FFT with  $f_{IN1} = 140.2$  MHz and  $f_{IN2} = 141.3$  MHz,  $f_{SAMPLE} = 210$  MSPS

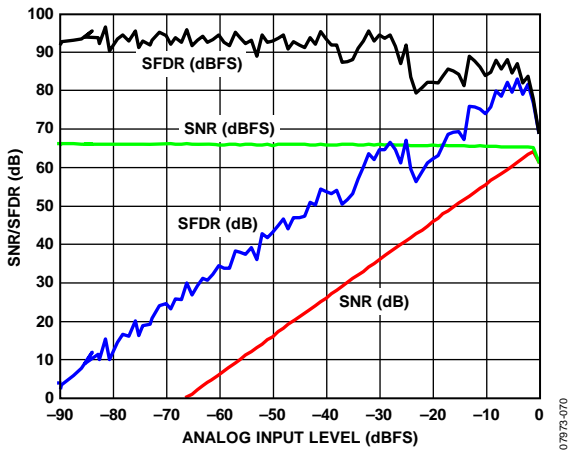


Figure 11. SNR/SFDR vs. Analog Input Level,  $f_{IN} = 84.3$  MHz,  $f_{SAMPLE} = 210$  MSPS

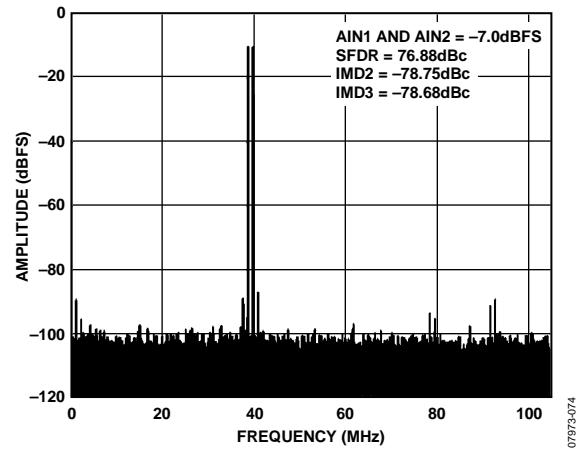


Figure 14. Two-Tone 32k FFT with  $f_{IN1} = 170.2$  MHz and  $f_{IN2} = 171.3$  MHz,  $f_{SAMPLE} = 210$  MSPS

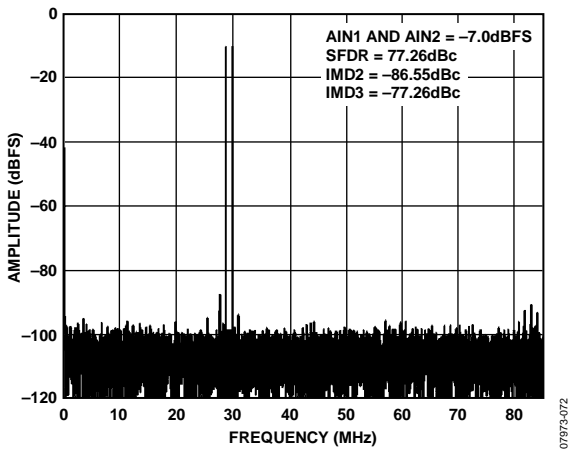


Figure 12. Two-Tone 32k FFT with  $f_{IN1} = 140.2$  MHz and  $f_{IN2} = 141.3$  MHz,  $f_{SAMPLE} = 170$  MSPS

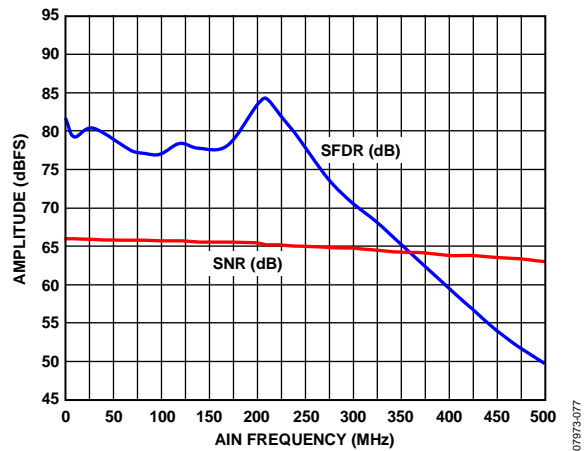


Figure 15. SNR/SFDR Amplitude vs. AIN Frequency,  $f_{SAMPLE} = 170$  MSPS

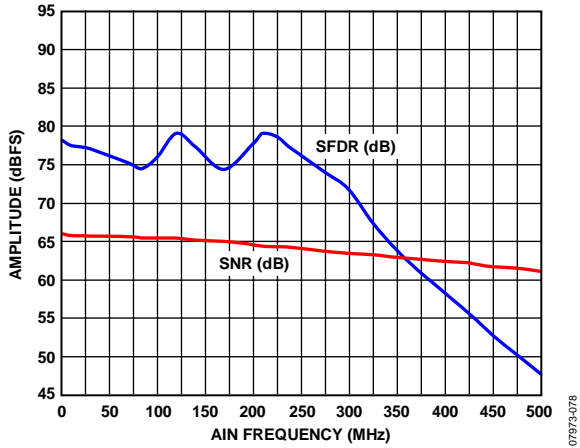


Figure 16. SNR/SFDR Amplitude vs. AIN Frequency,  $f_{SAMPLE} = 210$  MSPS

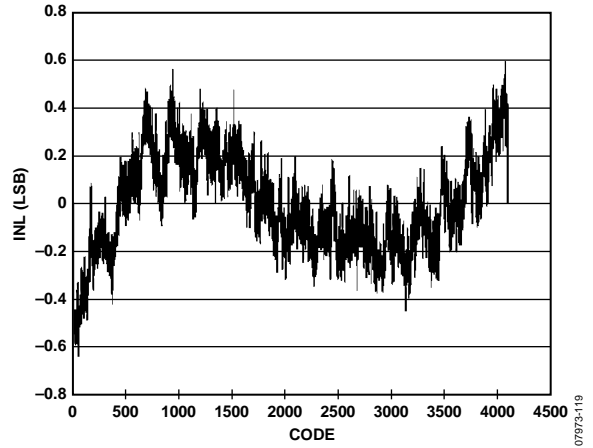


Figure 19. INL,  $f_{IN} = 9.7$  MHz,  $f_{SAMPLE} = 210$  MSPS

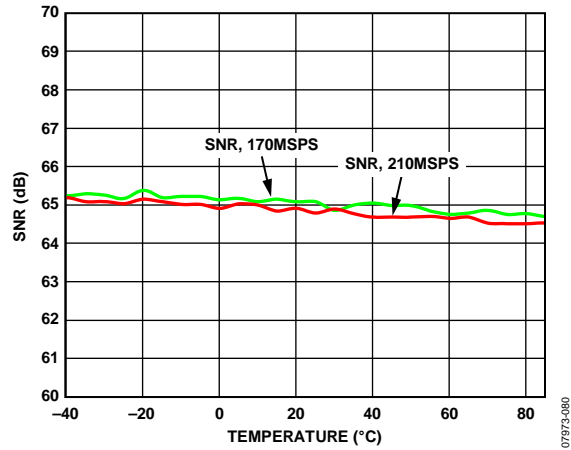


Figure 17. SNR vs. Temperature,  $f_{IN} = 84.3$  MHz

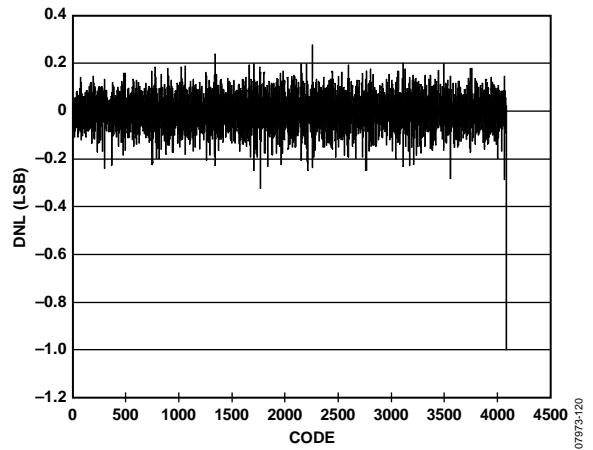


Figure 20. DNL,  $f_{IN} = 9.7$  MHz,  $f_{SAMPLE} = 210$  MSPS

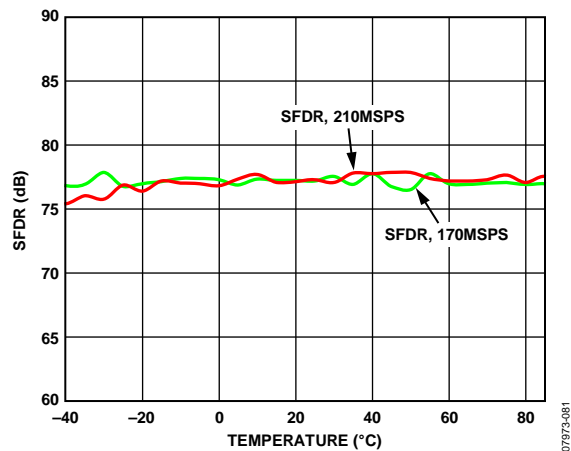


Figure 18. SFDR vs. Temperature,  $f_{IN} = 84.3$  MHz

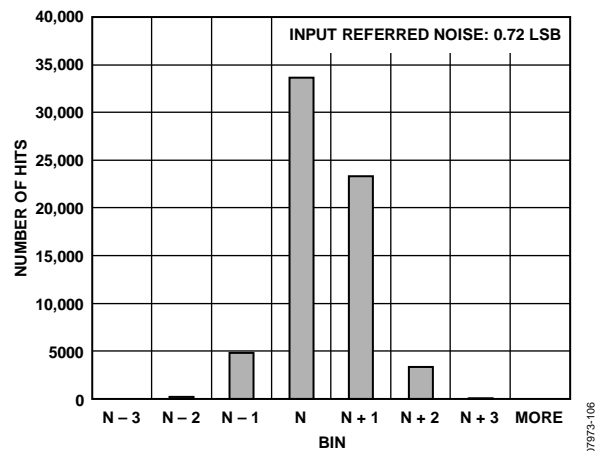


Figure 21. Input-Referred Noise Histogram,  $f_{SAMPLE} = 170$  MSPS

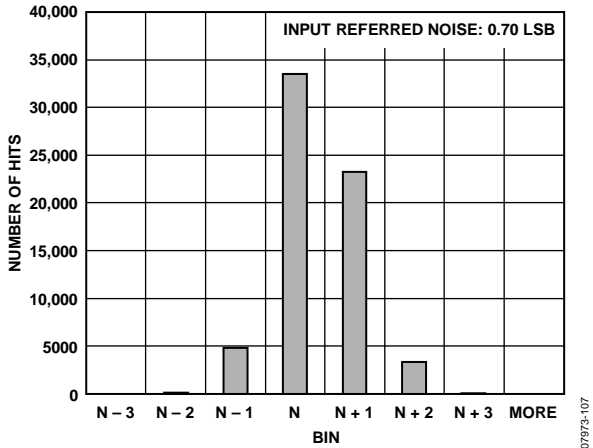


Figure 22. Input-Referred Noise Histogram,  $f_{\text{SAMPLE}} = 210 \text{ MSPS}$

07973-107

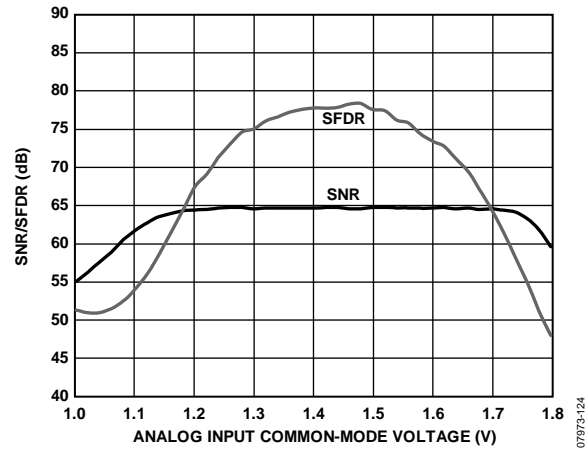


Figure 24. SNR/SFDR vs. Analog Input Common-Mode Voltage,  $f_{\text{IN}} = 84.3 \text{ MHz}$ ,  $f_{\text{SAMPLE}} = 210 \text{ MSPS}$

07973-124

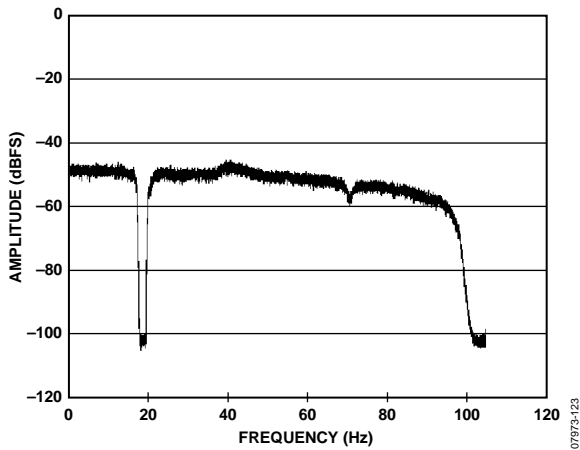


Figure 23. Noise Power Ratio (NPR),  $f_{\text{SAMPLE}} = 210 \text{ MSPS}$

07973-123

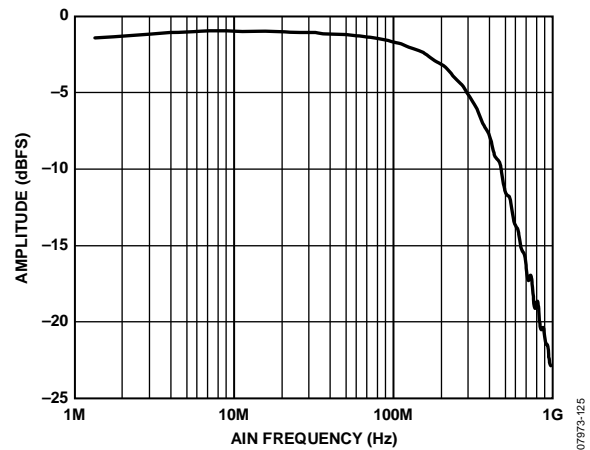


Figure 25. Full-Power Bandwidth Amplitude vs. AIN Frequency,  $f_{\text{SAMPLE}} = 210 \text{ MSPS}$

07973-125

# EQUIVALENT CIRCUITS

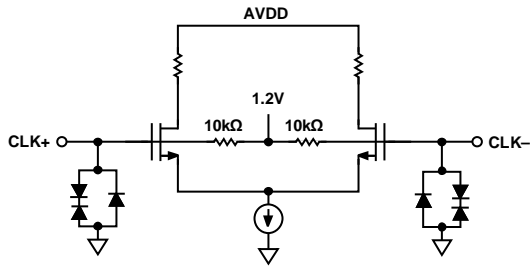


Figure 26. CLK± Inputs

07973-005

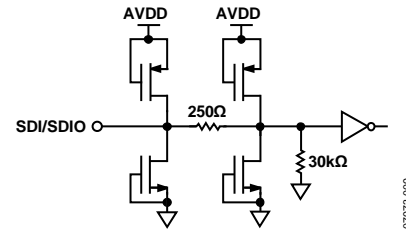


Figure 30. Equivalent SDI/SDIO Input Circuit

07973-009

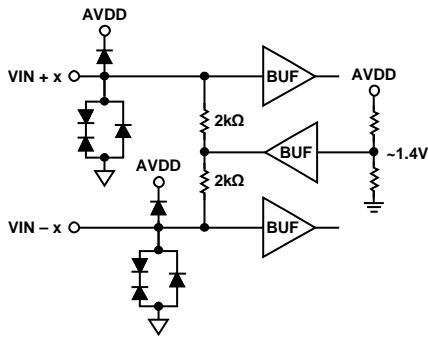


Figure 27. Analog Inputs

07973-006

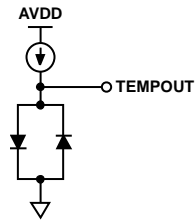


Figure 31. Equivalent TEMPOUT Output Circuit

07973-010

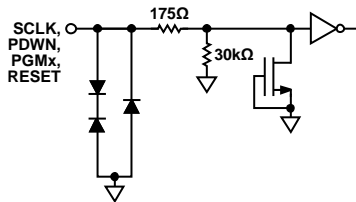


Figure 28. Equivalent SCLK, RESET, PDWN, PGMx Input Circuit

07973-007

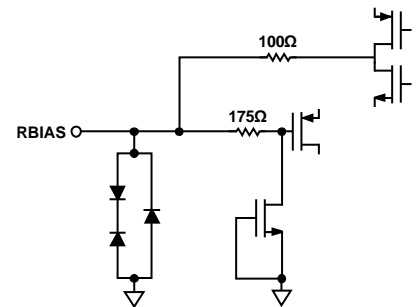


Figure 32. Equivalent RBIAS Input/Output Circuit

07973-011

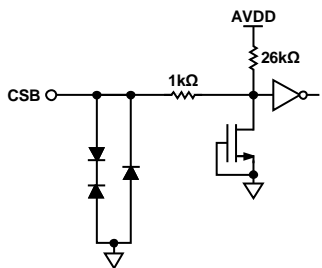


Figure 29. Equivalent CSB Input Circuit

07973-008

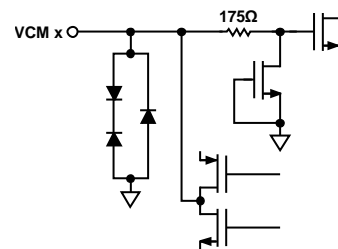


Figure 33. Equivalent VCMx Output Circuit

07973-012

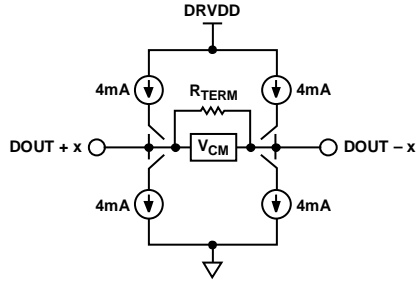


Figure 34. Equivalent Digital Output Circuit

07973-089

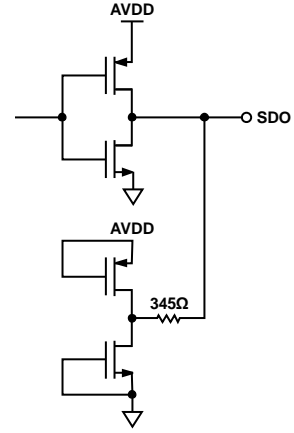


Figure 35. Equivalent SDO Output Circuit

07973-090



## THEORY OF OPERATION

The AD9639 architecture consists of a differential input buffer and a front-end sample-and-hold amplifier (SHA) followed by a pipelined switched-capacitor ADC. The quantized outputs from each stage are combined into a final 12-bit result in the digital correction logic. The pipelined architecture permits the first stage to operate on a new input sample while the remaining stages operate on preceding samples. Sampling occurs on the rising edge of the clock.

Each stage of the pipeline, excluding the last, consists of a low resolution flash ADC connected to a switched-capacitor DAC and interstage residue amplifier (for example, a multiplying digital-to-analog converter (MDAC)). The residue amplifier magnifies the difference between the reconstructed DAC output and the flash input for the next stage in the pipeline. One bit of redundancy is used in each stage to facilitate digital correction of flash errors. The last stage simply consists of a flash ADC.

The input stage contains a differential SHA that can be ac- or dc-coupled in differential or single-ended mode. The output of the pipeline ADC is put into its final serial format by the data serializer, encoder, and CML drivers block. The data rate multiplier creates the clock used to output the high speed serial data at the CML outputs.

## ANALOG INPUT CONSIDERATIONS

The analog input to the AD9639 is a differential buffer. This input is optimized to provide superior wideband performance and requires that the analog inputs be driven differentially. SNR and SINAD performance degrades if the analog input is driven with a single-ended signal.

For best dynamic performance, the source impedances driving  $V_{IN} + x$  and  $V_{IN} - x$  should be matched such that common-mode settling errors are symmetrical. These errors are reduced by the common-mode rejection of the ADC. A small resistor in series

with each input can help to reduce the peak transient current injected from the output stage of the driving source.

In addition, low Q inductors or ferrite beads can be placed on each leg of the input to reduce high differential capacitance at the analog inputs and, therefore, achieve the maximum bandwidth of the ADC. The use of low Q inductors or ferrite beads is required when driving the converter front end at high IF frequencies. Either a shunt capacitor or two single-ended capacitors can be placed on the inputs to provide a matching passive network. This ultimately creates a low-pass filter at the input to limit unwanted broadband noise. See the AN-827 Application Note and the *Analog Dialogue* article “Transformer-Coupled Front-End for Wideband A/D Converters” (Volume 39, Number 2, April 2005) for more information on this subject. In general, the precise values depend on the application.

Maximum SNR performance is achieved by setting the ADC to the largest span in a differential configuration. In the case of the AD9639, the default input span is 1.25 V p-p. To configure the ADC for a different input span, see the  $V_{REF}$  register (Address 0x18). For the best performance, an input span of 1.25 V p-p or greater should be used (see Table 15 for details).

## Differential Input Configurations

The AD9639 can be driven actively or passively; in either case, optimum performance is achieved by driving the analog input differentially. For example, using the ADA4937 differential amplifier to drive the AD9639 provides excellent performance and a flexible interface to the ADC for baseband and second Nyquist (~100 MHz IF) applications (see Figure 36 and Figure 37). In either application, use 1% resistors for good gain matching. Note that the dc-coupled configuration shows some degradation in spurious performance. For more information, consult the ADA4937 data sheet.

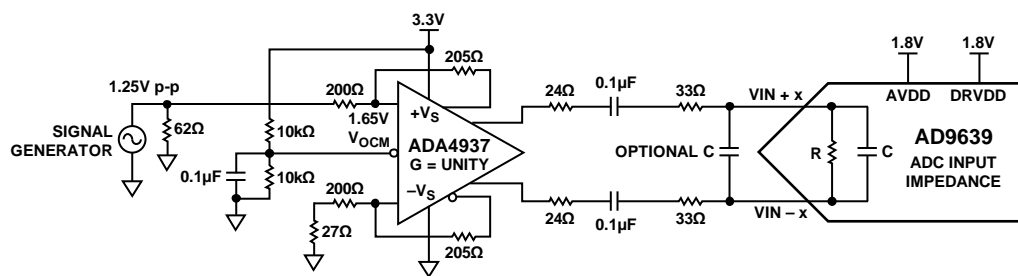


Figure 36. Differential Amplifier Configuration for AC-Coupled Baseband Applications

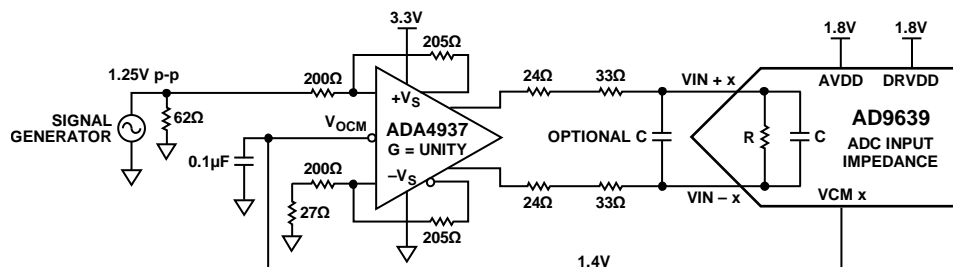
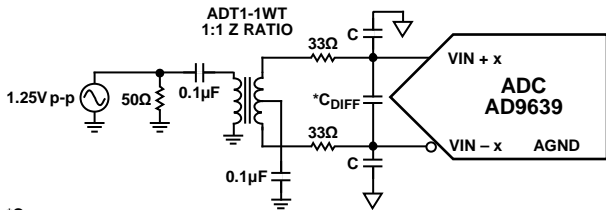


Figure 37. Differential Amplifier Configuration for DC-Coupled Baseband Applications

# AD9639

For applications where SNR is a key parameter, differential transformer coupling is the recommended input configuration to achieve the true performance of the AD9639 (see Figure 38 to Figure 40).

Regardless of the configuration, the value of the shunt capacitor, C, is dependent on the input frequency and may need to be reduced or removed.



\*C<sub>DIFF</sub> IS OPTIONAL

Figure 38. Differential Transformer-Coupled Configuration for Baseband Applications

07973-013

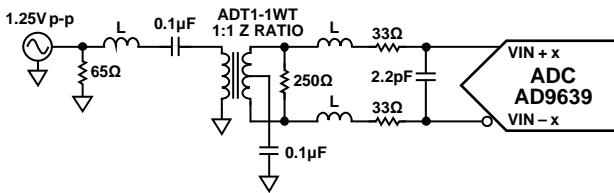


Figure 39. Differential Transformer-Coupled Configuration for Wideband IF Applications

07973-014

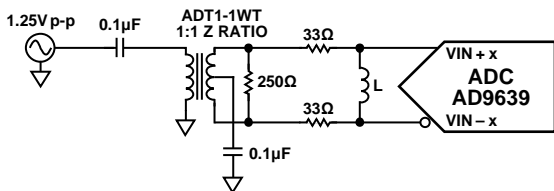


Figure 40. Differential Transformer-Coupled Configuration for Narrow-Band IF Applications

07973-015

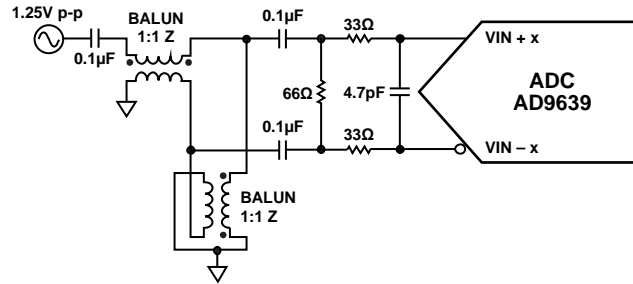


Figure 41. Differential Balun-Coupled Configuration for Wideband IF Applications

07973-017

## Single-Ended Input Configuration

A single-ended input may provide adequate performance in cost-sensitive applications. In this configuration, SFDR and distortion performance can degrade due to input common-mode swing mismatch. If the application requires a single-ended input configuration, ensure that the source impedances on each input are well matched to achieve the best possible performance. A full-scale input of 1.25 V p-p can be applied to the VIN + x pin of the AD9639 while the VIN - x pin is terminated. Figure 42 shows a typical single-ended input configuration.

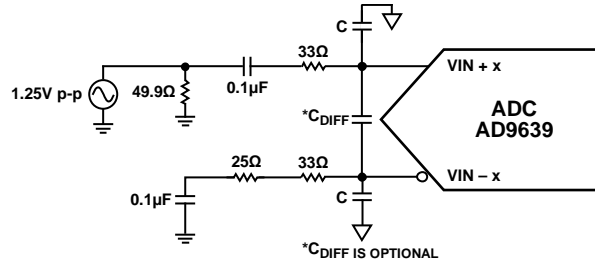


Figure 42. Single-Ended Input Configuration

07973-016

**CLOCK INPUT CONSIDERATIONS**

For optimum performance, the AD9639 sample clock inputs (CLK+ and CLK-) should be clocked with a differential signal. This signal is typically ac-coupled to the CLK+ and CLK- pins via a transformer or capacitors. These pins are biased internally to 1.2 V and require no additional biasing.

Figure 43 shows a preferred method for clocking the AD9639. The low jitter clock source is converted from a single-ended signal to a differential signal using an RF transformer. The back-to-back Schottky diodes across the secondary transformer limit clock excursions into the AD9639 to approximately 0.8 V p-p differential. This helps to prevent the large voltage swings of the clock from feeding through to other portions of the AD9639, and it preserves the fast rise and fall times of the signal, which are critical to low jitter performance.

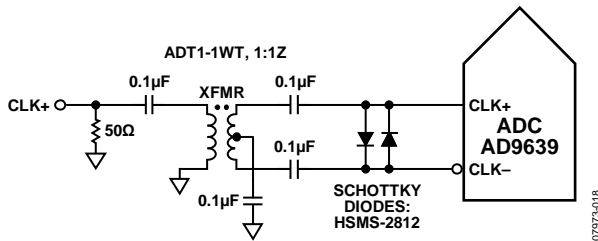


Figure 43. Transformer-Coupled Differential Clock

Another option is to ac-couple a differential PECL signal to the sample clock input pins as shown in Figure 44. The AD9510/AD9511/AD9512/AD9513/AD9514/AD9515/AD9516/AD9518 family of clock drivers offers excellent jitter performance.

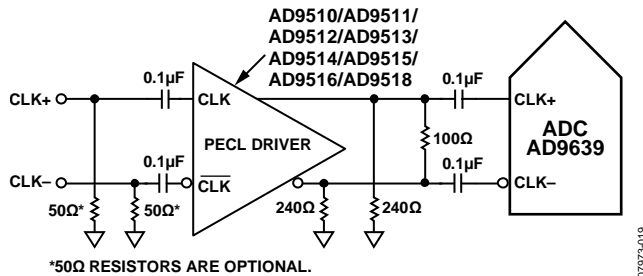


Figure 44. Differential PECL Sample Clock

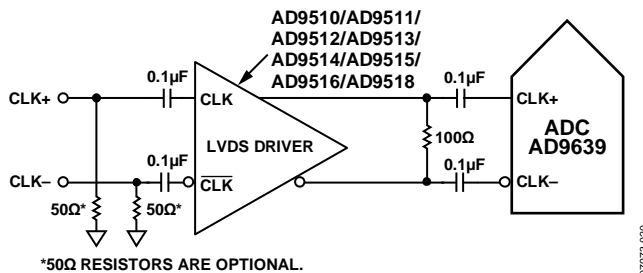
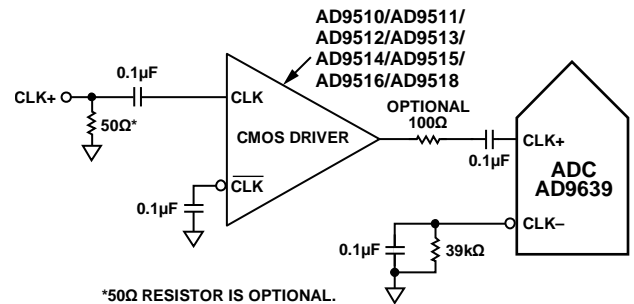


Figure 45. Differential LVDS Sample Clock

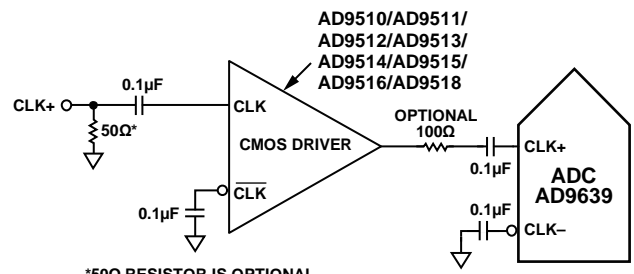
In some applications, it is acceptable to drive the sample clock inputs with a single-ended CMOS signal. In such applications, CLK+ should be driven directly from a CMOS gate, and the CLK- pin should be bypassed to ground with a 0.1 μF capacitor in parallel with a 39 kΩ resistor (see Figure 46). Although the

CLK+ input circuit supply is AVDD (1.8 V), this input is designed to withstand input voltages of up to 3.3 V and, therefore, offers several selections for the drive logic voltage.



\*50Ω RESISTOR IS OPTIONAL.

Figure 46. Single-Ended 1.8 V CMOS Sample Clock



\*50Ω RESISTOR IS OPTIONAL.

Figure 47. Single-Ended 3.3 V CMOS Sample Clock

**Clock Duty Cycle Considerations**

Typical high speed ADCs use both clock edges to generate a variety of internal timing signals. As a result, these ADCs may be sensitive to the clock duty cycle. Commonly, a 5% tolerance is required on the clock duty cycle to maintain dynamic performance characteristics.

The AD9639 contains a duty cycle stabilizer (DCS) that retimes the nonsampling edge, providing an internal clock signal with a nominal 50% duty cycle. This allows a wide range of clock input duty cycles without affecting the performance of the AD9639. When the DCS is on (default), noise and distortion performance are nearly flat for a wide range of duty cycles. However, some applications may require the DCS function to be off. If so, keep in mind that the dynamic range performance may be affected when operated in this mode. See the Memory Map section for more details on using this feature.

Jitter in the rising edge of the input is an important concern, and it is not reduced by the internal stabilization circuit. The duty cycle control loop does not function for clock rates of less than 50 MHz nominal. It is not recommended that this ADC clock be dynamic in nature. Moving the clock around dynamically requires long wait times for the back end serial capture to retime and resynchronize to the receiving logic. This long time constant far exceeds the time that it takes for the DCS and the PLL to lock and stabilize. Only in rare applications would it be necessary to disable the DCS circuitry in the clock register (see Address 0x09 in Table 15). Keeping the DCS circuit enabled is recommended to maximize ac performance.

## Clock Jitter Considerations

High speed, high resolution ADCs are sensitive to the quality of the clock input. The degradation in SNR at a given input frequency ( $f_A$ ) due only to aperture jitter ( $t_j$ ) can be calculated as follows:

$$SNR \text{ Degradation} = 20 \times \log_{10}(1/2 \times \pi \times f_A \times t_j)$$

In this equation, the rms aperture jitter represents the root mean square of all jitter sources, including the clock input, analog input signal, and ADC aperture jitter. IF undersampling applications are particularly sensitive to jitter (see Figure 48).

The clock input should be treated as an analog signal in cases where aperture jitter may affect the dynamic range of the AD9639. Power supplies for clock drivers should be separated from the ADC output driver supplies to avoid modulating the clock signal with digital noise. Low jitter, crystal-controlled oscillators are the best clock sources. If the clock is generated from another type of source (by gating, dividing, or another method), it should be retimed by the original clock during the last step.

Refer to the AN-501 Application Note, the AN-756 Application Note, and the *Analog Dialogue* article, "Analog-to-Digital Converter Clock Optimization: A Test Engineering Perspective" (Volume 42, Number 2, February 2008) for in-depth information about jitter performance as it relates to ADCs (visit [www.analog.com](http://www.analog.com)).

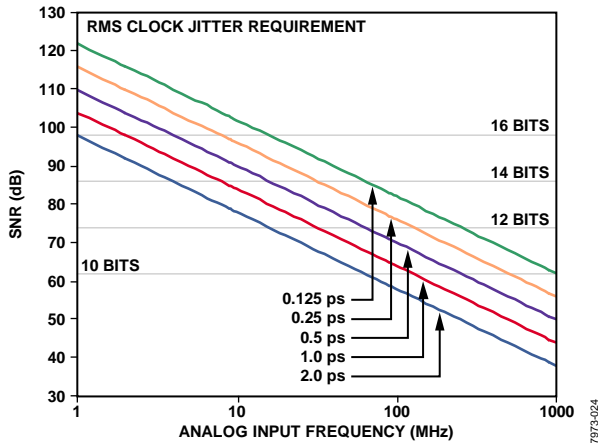


Figure 48. Ideal SNR vs. Input Frequency and Jitter

## Power Dissipation

As shown in Figure 49 and Figure 50, the power dissipated by the AD9639 is proportional to its clock rate. The digital power dissipation does not vary significantly because it is determined primarily by the DRVDD supply and the bias current of the digital output drivers.

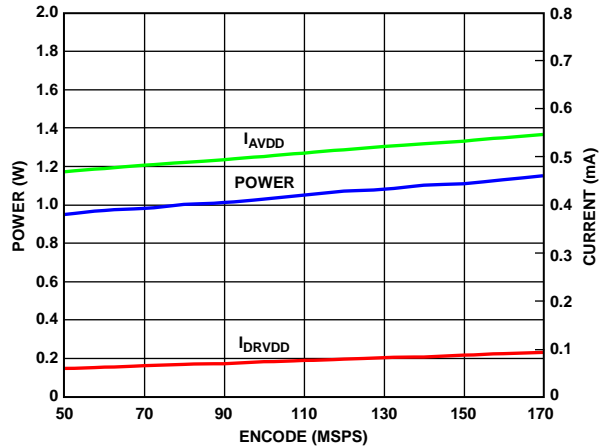


Figure 49. Supply Current vs. Encode for  $f_{IN} = 84.3 \text{ MHz}$ ,  $f_{SAMPLE} = 170 \text{ MSPS}$

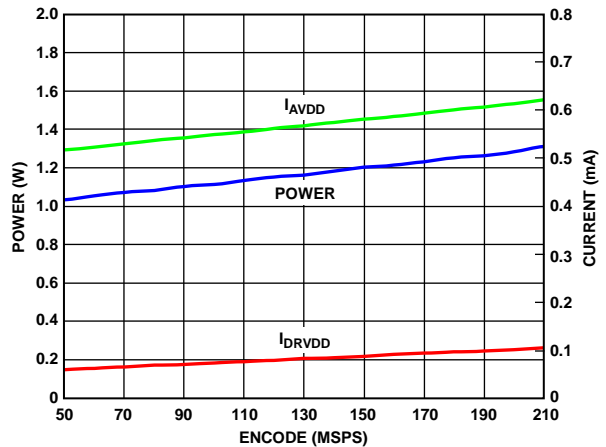


Figure 50. Supply Current vs. Encode for  $f_{IN} = 84.3 \text{ MHz}$ ,  $f_{SAMPLE} = 210 \text{ MSPS}$

**DIGITAL OUTPUTS**

**Serial Data Frame**

The AD9639 digital output complies with the JEDEC Standard No. 204 (JESD204), which describes a serial interface for data converters. JESD204 uses 8B/10B encoding as well as optional scrambling. K28.5 and K28.7 comma symbols are used for frame synchronization. The receiver is required to lock onto the serial data stream and recover the clock with the use of a PLL. (Refer to IEEE Std 802.3-2002, Section 3, for a complete 8B/10B and comma symbol description.)

The 8B/10B encoding works by taking eight bits of data (an octet) and encoding them into a 10-bit symbol. In the AD9639, the 12-bit converter word is broken into two octets. Bit 11 through Bit 4 are in the first octet. The second octet contains Bit 3 through Bit 0 and four tail bits. The MSB of the tail bits can also be used to indicate an out-of-range condition. The tail bits are configured using the JESD204 register, Address 0x033[3].

The two resulting octets are optionally scrambled and encoded into their corresponding 10-bit code. The scrambling function is controlled by the JESD204 register, Address 0x033[0]. Figure 51 shows how the 12-bit data is taken from the ADC, the tail bits are added, the two octets are scrambled, and the octets are encoded into two 10-bit symbols. Figure 52 illustrates the data format.

The scrambler uses a self-synchronizing polynomial-based algorithm defined by the equation  $1 + x^{14} + x^{15}$ . The descrambler in the receiver should be a self-synchronizing version of the scrambler polynomial. A 16-bit parallel implementation is shown in Figure 54.

Refer to JEDEC Standard No. 204-April 2006, Section 5.1, for complete transport layer and data format details and Section 5.2 for a complete explanation of scrambling and descrambling.

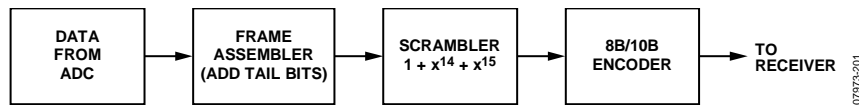


Figure 51. ADC Data Output Path

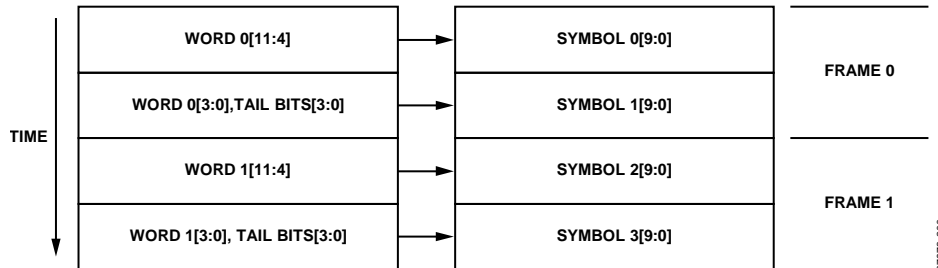


Figure 52. 12-Bit Data Transmission with Tail Bits

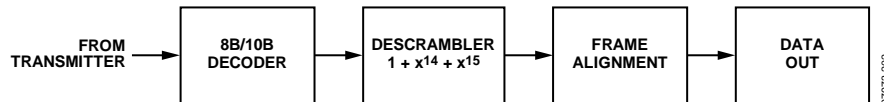


Figure 53. Required Receiver Data Path

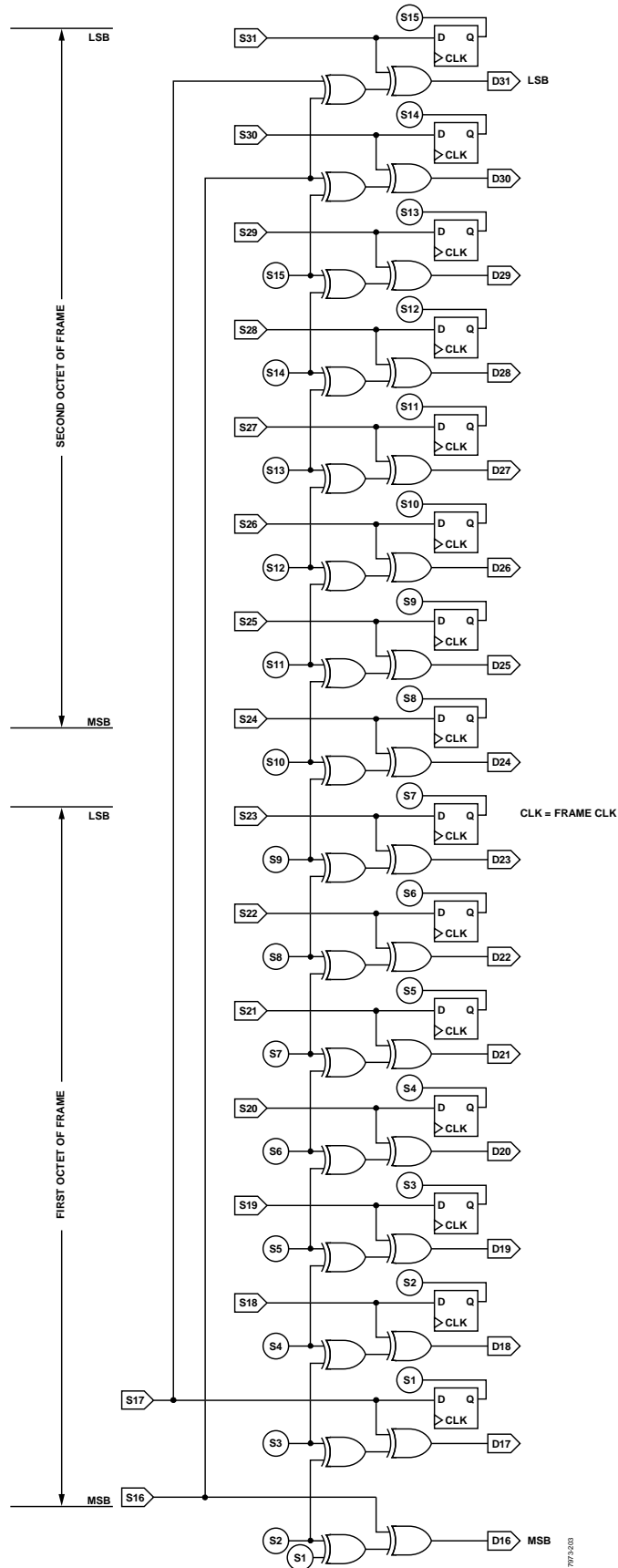


Figure 54. Parallel Descrambler Required in Receiver

### Initial Synchronization

The serial interface must synchronize to the frame boundaries before data can be properly decoded. The JESD204 standard has a synchronization routine to identify the frame boundary. The PGMx pins are used as SYNC pins by default. When the SYNC pin is taken low for at least two clock cycles, the AD9639 enters the synchronization mode. The AD9639 transmits the K28.5 comma symbol until the receiver can identify the frame boundary. The receiver should then deassert the sync signal (take SYNC high) and the ADC begins transmitting real data. The first non-K28.5 symbol is the MSB symbol of the 12-bit data.

To minimize skew and time misalignment between each channel of the digital outputs, the following actions should be taken to ensure that each channel data frame is within  $\pm 1$  clock cycle of the sample clock. For some receiver logic, this is not required.

1. Full power-down through external PDWN pin.
2. Chip reset via external RESET pin.
3. Power-up by releasing external PDWN pin.

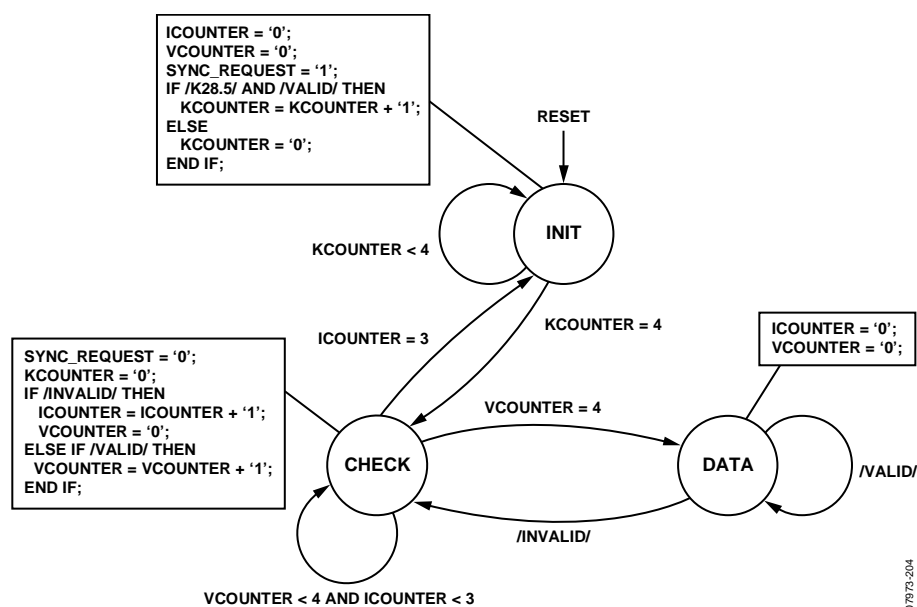


Figure 55. Receiver State Machine

Table 8. Variables Used in Receiver State Machine

| Variable     | Description  |
|--------------|--|
| ICOUNTER     | Counter used in the CHECK phase to count the number of invalid symbols.  |
| /INVALID/    | Asserted by receiver to indicate that the current symbol is an invalid symbol given the current running disparity. |
| /K28.5/      | Asserted when the current symbol corresponds to the K28.5 control character.                                       |
| KCOUNTER     | Counter used in the INIT phase to count the number of valid K28.5 symbols.   |
| SYNC_REQUEST | Asserted by receiver when loss of code group synchronization is detected.  |
| /VALID/      | Asserted by receiver to indicate that the current symbol is a valid symbol given the current running disparity.    |
| VCOUNTER     | Counter used in the CHECK phase to count the number of successive valid symbols.                                   |

## Continuous Synchronization

Continuous synchronization is part of the JESD204 specification. The 12-bit word requires two octets to transmit all the data. The two octets (MSB and LSB) are called a frame. When scrambling is disabled and the LSB octets of two consecutive frames are the same, the second LSB octet is replaced by a K28.7 comma symbol. The receiver is responsible for replacing the K28.7 comma symbol with the LSB octet of the previous frame.

When scrambling is enabled, any D28.7 symbols found in the LSB octet of a frame are replaced with K28.7 comma symbols. The receiver is responsible for replacing the K28.7 comma symbols with D28.7 symbols when in this mode.

By looking for K28.7 symbols, the receiver can ensure that it is still synchronized to the frame boundary.

```

IF /K28.7/
  /REPLACE_K28.7/
  IF (OCOUNTER == PREVIOUS_POSITION) AND /VALID/
    /RESET_OCTET_COUNTER/
  END IF;
  IF /VALID/ | (OCOUNTER == N-1)
    PREVIOUS_POSITION = OCOUNTER
  END IF;
END IF;
    
```

07973-205

Figure 56. Pseudocode for Data Dependent Frame Synchronization in Receiver

**Table 9. Variables and Functions in Data Dependent Frame Synchronization**

| Variable              | Description  |
|-----------------------|--|
| N                     | Number of octets in frame (octet indexing starts from 0).  |
| /K28.7/               | Asserted when the current symbol corresponds to the K28.7 control character.   |
| OCOUNTER              | Counter used to mark the position of the current octet in the frame.   |
| PREVIOUS_POSITION     | Variable that stores the position in the frame of a K28.7 symbol.  |
| /REPLACE_K28.7/       | Replace K28.7 at the decoder output as follows. When scrambling is disabled, replace K28.7 with the LSB octet that was decoded at the same position in the previous frame; when scrambling is enabled, replace K28.7 at the decoder output with D28.7. |
| /RESET_OCTET_COUNTER/ | Reset octet counter to 0 at reception of next octet.   |
| /VALID/               | Asserted by receiver to indicate that the current symbol is a valid symbol given the current running disparity.  |



### Digital Outputs and Timing

The AD9639 has differential digital outputs that power up by default. The driver current is derived on chip and sets the output current at each output equal to a nominal 4 mA. Each output presents a 100  $\Omega$  dynamic internal termination to reduce unwanted reflections.

A 100  $\Omega$  differential termination resistor should be placed at each receiver input to result in a nominal 400 mV peak-to-peak swing at the receiver. Alternatively, single-ended 50  $\Omega$  termination can be used. When single-ended termination is used, the termination voltage should be  $DRVDD/2$ ; otherwise, ac coupling capacitors can be used to terminate to any single-ended voltage.

The AD9639 digital outputs can interface with custom ASICs and FPGA receivers, providing superior switching performance in noisy environments. Single point-to-point network topologies are recommended with a single differential 100  $\Omega$  termination resistor placed as close to the receiver logic as possible. The common mode of the digital output automatically biases itself to half the supply of  $DRVDD$  if dc-coupled connecting is used. For receiver logic that is not within the bounds of the  $DRVDD$  supply, an ac-coupled connection should be used. Simply place a 0.1  $\mu\text{F}$  capacitor on each output pin and derive a 100  $\Omega$  differential termination close to the receiver side.

If there is no far-end receiver termination or if there is poor differential trace routing, timing errors may result. To avoid such timing errors, it is recommended that the trace length be less than 6 inches and that the differential output traces be close together and at equal lengths.

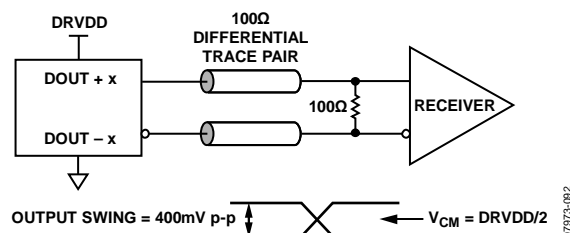


Figure 57. DC-Coupled Digital Output Termination Example

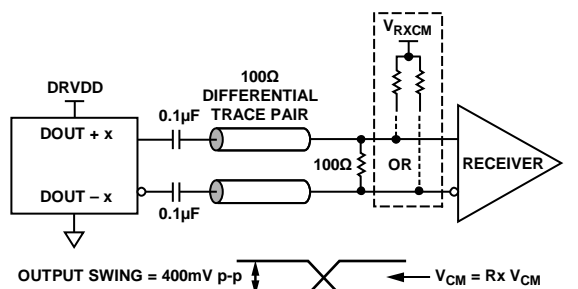


Figure 58. AC-Coupled Digital Output Termination Example

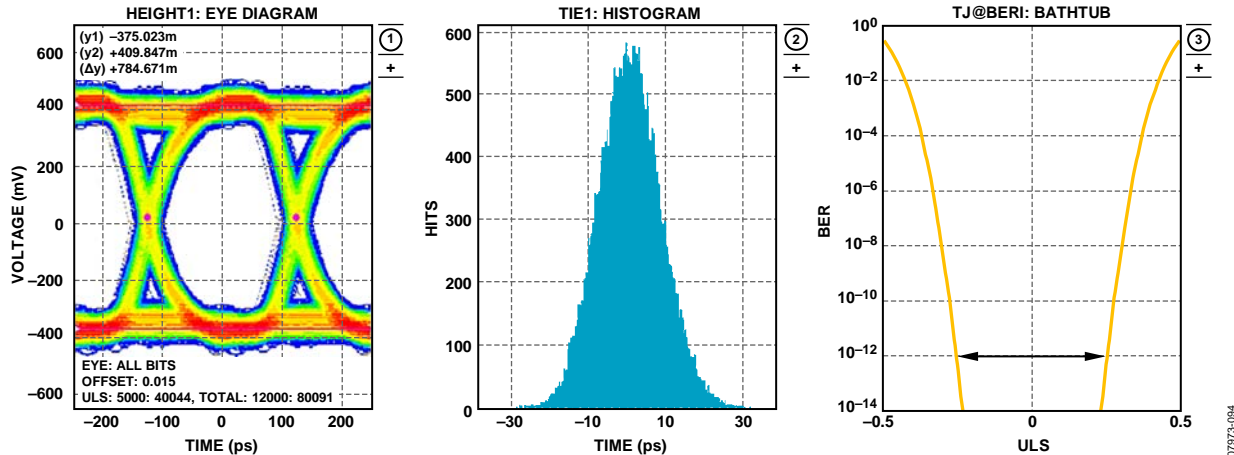


Figure 59. Digital Outputs Data Eye with Trace Lengths Less Than 6 Inches on Standard FR-4, External 100 Ω Terminations at Receiver

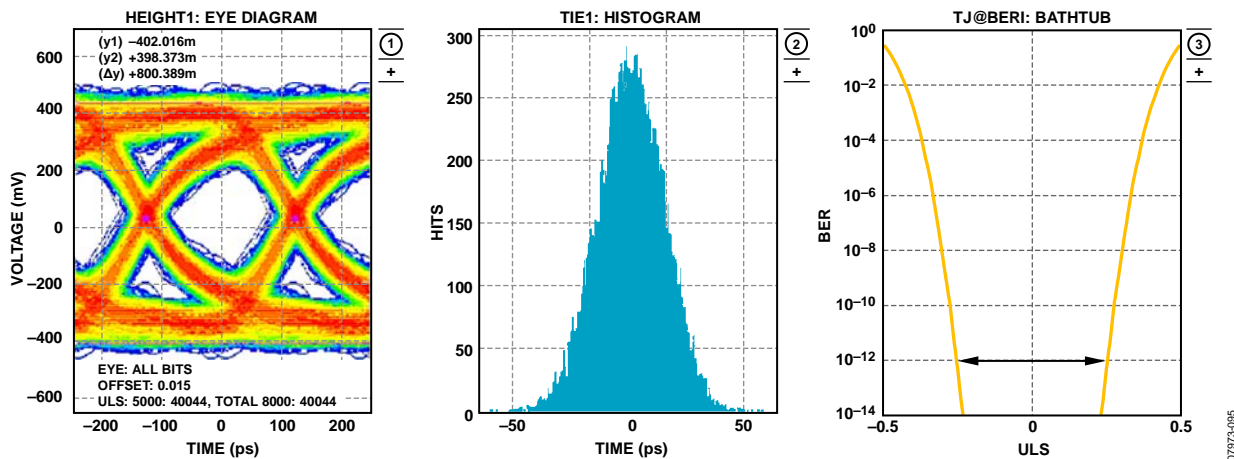


Figure 60. Digital Outputs Data Eye with Trace Lengths Greater Than 12 Inches on Standard FR-4, External 100 Ω Terminations at Receiver

Figure 59 shows an example of the digital output (default) data eye and a time interval error (TIE) jitter histogram with trace lengths less than 6 inches on standard FR-4 material. Figure 60 shows an example of trace lengths exceeding 12 inches on standard FR-4 material. Note that the TIE jitter histogram reflects the decrease of the data eye opening as the edge deviates from the ideal position. It is the user's responsibility to determine whether the waveforms meet the timing budget of the design when the trace lengths exceed 6 inches.

Additional SPI options allow the user to further increase the output driver voltage swing of all four outputs to drive longer trace lengths (see Address 0x15 in Table 15). Even though this produces sharper rise and fall times on the data edges and is less prone to bit errors, the power dissipation of the DRVDD supply increases when this option is used. See the Memory Map section for more details.

The format of the output data is offset binary by default. Table 10 provides an example of this output coding format. To change the output data format to two's complement or gray code, see the Memory Map section (Address 0x14 in Table 15).

Table 10. Digital Output Coding

| Code | $(VIN + x) - (VIN - x)$ ,<br>Input Span = 1.25 V p-p (V) | Digital Output Offset Binary (D11:D0) |
|------|--|---------------------------------------|
| 4095 | +0.625   | 1111 1111 1111                        |
| 2048 | 0.00   | 1000 0000 0000                        |
| 2047 | -0.000305  | 0111 1111 1111                        |
| 0    | -0.625   | 0000 0000 0000                        |

The lowest typical clock rate is 100 MSPS. For clock rates slower than 100 MSPS, the user can set Bit 3 to 0 in the serial control register (Address 0x21 in Table 15). This option allows the user to adjust the PLL loop bandwidth to use clock rates as low as 50 MSPS.

Setting Bit 2 in the output mode register (Address 0x14) allows the user to invert the digital outputs from their nominal state. This is not to be confused with inverting the serial stream to an LSB first mode. In default mode, as shown in Figure 2, the MSB is first in the data output serial stream. However, this order can be inverted so that the LSB is first in the data output serial stream.

There are eight digital output test pattern options available that can be initiated through the SPI (see Table 12 for the output bit sequencing options). This feature is useful when validating receiver capture and timing. Some test patterns have two serial sequential words and can be alternated in various ways, depending on the test pattern selected. Note that some patterns do not adhere to the data format select option. In addition, custom user-defined test patterns can be assigned in the user pattern registers (Address 0x19 through Address 0x20).

The PN sequence short pattern produces a pseudorandom bit sequence that repeats itself every  $2^9 - 1$  (511) bits. A description of the PN sequence short and how it is generated can be found in Section 5.1 of the ITU-T O.150 (05/96) recommendation. The only difference is that the starting value must be a specific value instead of all 1s (see Table 11 for the initial values).

The PN sequence long pattern produces a pseudorandom bit sequence that repeats itself every  $2^{23} - 1$  (8,388,607) bits. A description of the PN sequence long and how it is generated can be found in Section 5.6 of the ITU-T O.150 (05/96) standard. The only differences are that the starting value must be a specific value instead of all 1s (see Table 11 for the initial values) and that the AD9639 inverts the bit stream with relation to the ITU-T standard.

**Table 11. PN Sequence**

| Sequence          | Initial Value | First Three Output Samples (MSB First) |
|-------------------|---------------|--|
| PN Sequence Short | 0x0DF         | 0xDF9, 0x353, 0x301                    |
| PN Sequence Long  | 0x29B80A      | 0x591, 0xFD7, 0x0A3                    |

Consult the Memory Map section for information on how to change these additional digital output timing features through the SPI.

**Table 12. Flexible Output Test Modes**

| Output Test Mode Bit Sequence | Pattern Name                   | Digital Output Word 1 | Digital Output Word 2 | Subject to Data Format Select |
|-------------------------------|--------------------------------|-----------------------|-----------------------|-------------------------------|
| 0000                          | Off (default)                  | N/A                   | N/A                   | Yes                           |
| 0001                          | Midscale short                 | 1000 0000 0000        | Same                  | Yes                           |
| 0010                          | +Full-scale short              | 1111 1111 1111        | Same                  | Yes                           |
| 0011                          | -Full-scale short              | 0000 0000 0000        | Same                  | Yes                           |
| 0100                          | Checkerboard                   | 1010 1010 1010        | 0101 0101 0101        | No                            |
| 0101                          | PN sequence long <sup>1</sup>  | N/A                   | N/A                   | Yes                           |
| 0110                          | PN sequence short <sup>1</sup> | N/A                   | N/A                   | Yes                           |
| 0111                          | One-/zero-word toggle          | 1111 1111 1111        | 0000 0000 0000        | No                            |

<sup>1</sup> All test mode options except PN sequence long and PN sequence short can support 8- to 14-bit word lengths to verify data capture to the receiver.

**TEMPOUT Pin**

The TEMPOUT pin can be used as a coarse temperature sensor to monitor the internal die temperature of the device. This pin typically has a 737 mV output with a clock rate of 210 MSPS and a negative going temperature coefficient of  $-1.12 \text{ mV}/^\circ\text{C}$ . The voltage response of this pin is characterized in Figure 61.

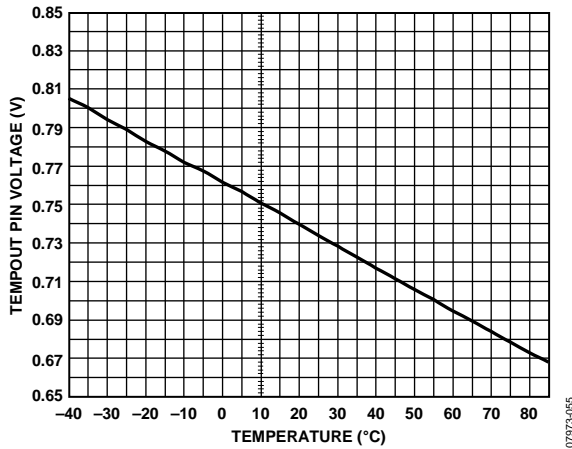


Figure 61. TEMPOUT Pin Voltage vs. Temperature

**RBIAS Pin**

To set the internal core bias current of the ADC, place a resistor (nominally equal to  $10.0 \text{ k}\Omega$ ) between ground and the RBIAS pin. The resistor current is derived on chip and sets the AVDD current of the ADC to a nominal 610 mA at 210 MSPS. Therefore, it is imperative that a 1% or less tolerance on this resistor be used to achieve consistent performance.

**VCM x Pins**

The common-mode output pins can be enabled through the SPI to provide an external reference bias voltage of 1.4 V for driving the  $V_{IN} + x/V_{IN} - x$  analog inputs. The VCM x pins may be required when connecting external devices, such as an amplifier or transformer, to interface to the analog inputs.

**RESET Pin**

The RESET pin resets the datapath and sets all SPI registers to their default values. To use this pin, the user must resynchronize the digital outputs. This pin is only 1.8 V tolerant.

**PDWN Pin**

When asserted high, the PDWN pin turns off all ADC channels, including the output drivers. This function can be changed to a standby function (see Address 0x08 in Table 15). This feature allows the user to place all channels into standby mode. The output drivers transmit pseudorandom data until the outputs are disabled using the output mode register (Address 0x14).

When the PDWN pin is asserted high, the AD9639 is placed into power-down mode, shutting down the reference, reference buffer, PLL, and biasing networks. In this state, the ADC typically dissipates 3 mW. If any of the SPI features are changed before

the power-down feature is enabled, the chip continues to function after PDWN is pulled low without requiring a reset. The AD9639 returns to normal operating mode when the PDWN pin is pulled low. This pin is only 1.8 V tolerant.

**SDO Pin**

The SDO pin is for use in applications that require a 4-wire SPI mode operation. For normal operation, it should be tied low to AGND through a  $10 \text{ k}\Omega$  resistor. Alternatively, the device pin can be left open, and the  $345 \Omega$  internal pull-down resistor pulls this pin low. This pin is only 1.8 V tolerant.

**SDI/SDIO Pin**

The SDI/SDIO pin is for use in applications that require either a 4- or 3-wire SPI mode operation. For normal operation, it should be tied low to AGND through a  $10 \text{ k}\Omega$  resistor. Alternatively, the device pin can be left open, and the  $30 \text{ k}\Omega$  internal pull-down resistor pulls this pin low. This pin is only 1.8 V tolerant.

**SCLK Pin**

For normal operation, the SCLK pin should be tied to AGND through a  $10 \text{ k}\Omega$  resistor. Alternatively, the device pin can be left open, and the  $30 \text{ k}\Omega$  internal pull-down resistor pulls this pin low. This pin is only 1.8 V tolerant.

**CSB Pin**

For normal operation, the CSB pin should be tied high to AVDD through a  $10 \text{ k}\Omega$  resistor. Alternatively, the device pin can be left open, and the  $26 \text{ k}\Omega$  internal pull-up resistor pulls this pin high. Tying the CSB pin to AVDD causes all information on the SCLK and SDI/SDIO pins to be ignored. Tying the CSB pin low causes all information on the SDO and SDI/SDIO pins to be written to the device. This feature allows the user to reduce the number of traces to the device if necessary. This pin is only 1.8 V tolerant.

**PGMx Pins**

All PGMx pins are automatically initialized as synchronization pins by default. These pins are used to lock the FPGA timing and data capture during initial startup. These pins are respective to each channel (PGM3 = Channel A, PGM2 = Channel B, and so on). The sync (PGMx) pin should be pulled high until this pin receives a low signal input from the receiver, during which time the ADC outputs K28.5 comma symbols to indicate the frame boundary. When the receiver finds the frame boundary, the sync identification is deasserted low and the ADC outputs the valid data on the next packet boundary.

When steady state operation for the device is achieved, these pins can be assigned as a standby option using the PGM mode register (Address 0x53 in Table 15). All other PGMx pins become global synchronization pins. This pin is only 1.8 V tolerant.

## SERIAL PORT INTERFACE (SPI)

The AD9639 serial port interface allows the user to configure the converter for specific functions or operations through a structured register space provided in the ADC. The SPI can provide the user with additional flexibility and customization, depending on the application. Addresses are accessed via the serial port and can be written to or read from via the port. Memory is organized into bytes that can be further divided into fields, as documented in the Memory Map section. Detailed operational information can be found in the Analog Devices, Inc., AN-877 Application Note, *Interfacing to High Speed ADCs via SPI*.

Four pins define the SPI: SCLK, SDI/SDIO, SDO, and CSB (see Table 13). The SCLK pin is used to synchronize the read and write data presented to the ADC. The SDI/SDIO pin is a dual-purpose pin that allows data to be sent to and read from the internal ADC memory map registers. The SDO pin is used in 4-wire mode to read back data from the part. The CSB pin is an active low control that enables or disables the read and write cycles.

**Table 13. Serial Port Pins**

| Pin      | Function  |
|----------|---|
| SCLK     | Serial clock. Serial shift clock input. SCLK is used to synchronize serial interface reads and writes.  |
| SDI/SDIO | Serial data input/output. Dual-purpose pin that typically serves as an input or an output, depending on the SPI wire mode, the instruction sent, and the relative position in the timing frame. |
| SDO      | Serial data output. Used only in 4-wire SPI mode. When set, the SDO pin becomes active. When cleared, the SDO pin remains in three-state and all read data is routed to the SDI/SDIO pin.       |
| CSB      | Chip select bar (active low). This control gates the read and write cycles.   |

The falling edge of CSB in conjunction with the rising edge of SCLK determines the start of the framing sequence. During the instruction phase, a 16-bit instruction is transmitted, followed by one or more data bytes, which is determined by Bit Field W0 and Bit Field W1. An example of the serial timing and its definitions can be found in Figure 63 and Table 14.

During normal operation, CSB is used to signal to the device that SPI commands are to be received and processed. When CSB is brought low, the device processes SCLK and SDI/SDIO to execute instructions. Normally, CSB remains low until the communication cycle is complete. However, if connected to a slow device, CSB can be brought high between bytes, allowing older microcontrollers enough time to transfer data into shift registers. CSB can be stalled when transferring one, two, or three bytes of data. When W0 and W1 are set to 11, the device enters streaming mode and continues to process data, either reading or writing, until CSB is taken high to end the communication cycle. This allows complete memory transfers without requiring

additional instructions. Regardless of the mode, if CSB is taken high in the middle of a byte transfer, the SPI state machine is reset and the device waits for a new instruction.

In addition to the operation modes, the SPI port configuration influences how the AD9639 operates. For applications that do not require a control port, the CSB line can be tied high. This places the SDI/SDIO pin into its secondary mode, as defined in the SDI/SDIO Pin section. CSB can also be tied low to enable 2-wire mode. When CSB is tied low, SCLK and SDI/SDIO are the only pins required for communication. Although the device is synchronized during power-up, the user should ensure that the serial port remains synchronized with the CSB line when using this mode. When operating in 2-wire mode, it is recommended that a 1-, 2-, or 3-byte transfer be used exclusively. Without an active CSB line, streaming mode can be entered but not exited.

In addition to word length, the instruction phase determines whether the serial frame is a read or write operation, allowing the serial port to be used to both program the chip and read the contents of the on-chip memory. If the instruction is a readback operation, performing a readback causes the SDI/SDIO pin to change from an input to an output at the appropriate point in the serial frame.

Data can be sent in MSB first or LSB first mode. MSB first mode is the default at power-up and can be changed by adjusting the configuration register (Address 0x00). For more information about this and other features, see the AN-877 Application Note, *Interfacing to High Speed ADCs via SPI*.

### HARDWARE INTERFACE

The pins described in Table 13 constitute the physical interface between the user's programming device and the serial port of the AD9639. The SCLK and CSB pins function as inputs when using the SPI. The SDI/SDIO pin is bidirectional, functioning as an input during write phases and as an output during readback.

If multiple SDI/SDIO pins share a common connection, ensure that proper  $V_{OH}$  levels are met. Assuming the same load for each AD9639, Figure 62 shows the number of SDI/SDIO pins that can be connected together and the resulting  $V_{OH}$  level. This interface is flexible enough to be controlled by either serial PROMs or PIC microcontrollers, providing the user with an alternative method, other than a full SPI controller, to program the ADC (see the AN-812 Application Note).

For users who wish to operate the ADC without using the SPI, remove any connections from the CSB, SCLK, SDO, and SDI/SDIO pins. By disconnecting these pins from the control bus, the ADC can function in its most basic operation. Each of these pins has an internal termination that floats to its respective level.

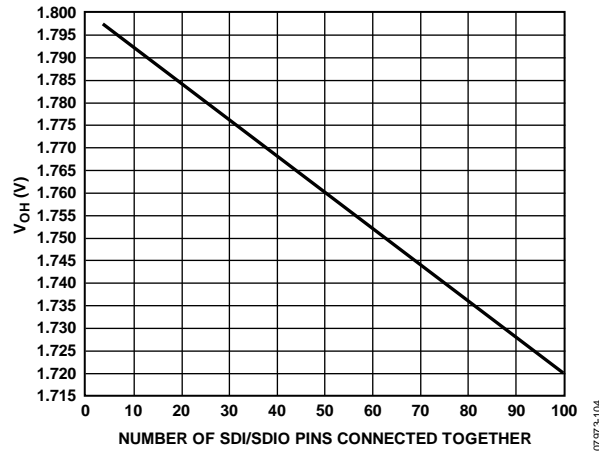


Figure 62. SDI/SDIO Pin Loading

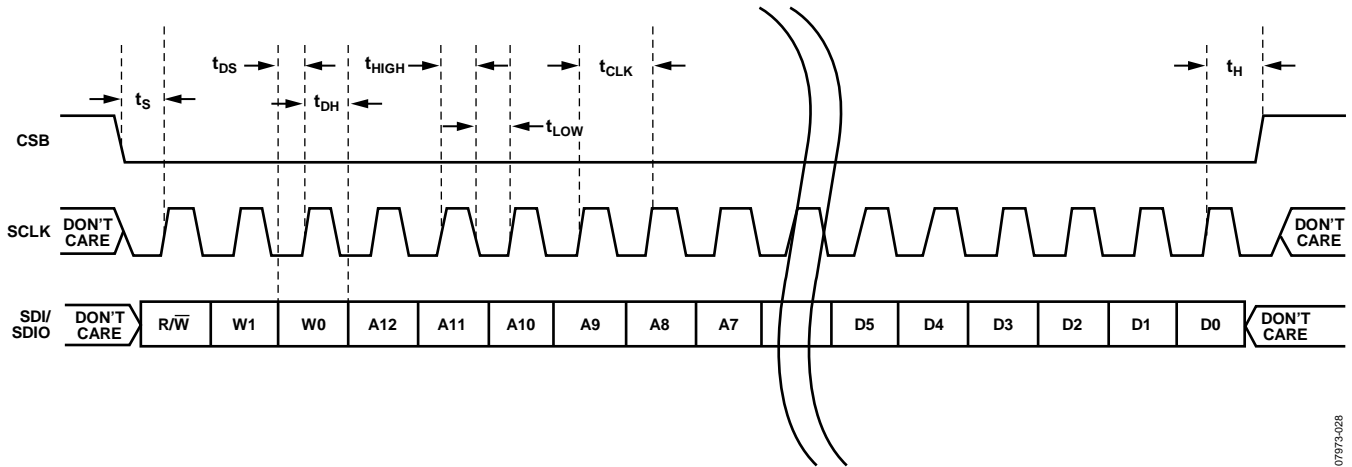


Figure 63. Serial Timing Details

Table 14. Serial Timing Definitions

| Parameter                 | Timing (ns min) | Description   |
|---------------------------|-----------------|---|
| t <sub>DS</sub>           | 5               | Setup time between the data and the rising edge of SCLK   |
| t <sub>DH</sub>           | 2               | Hold time between the data and the rising edge of SCLK  |
| t <sub>CLK</sub>          | 40              | Period of the clock   |
| t <sub>S</sub>            | 5               | Setup time between CSB and SCLK   |
| t <sub>H</sub>            | 2               | Hold time between CSB and SCLK  |
| t <sub>HIGH</sub>         | 16              | Minimum period that SCLK should be in a logic high state  |
| t <sub>LOW</sub>          | 16              | Minimum period that SCLK should be in a logic low state   |
| t <sub>EN_SDI/SDIO</sub>  | 10              | Minimum time for the SDI/SDIO pin to switch from an input to an output relative to the SCLK falling edge (not shown in Figure 63) |
| t <sub>DIS_SDI/SDIO</sub> | 10              | Minimum time for the SDI/SDIO pin to switch from an output to an input relative to the SCLK rising edge (not shown in Figure 63)  |

## MEMORY MAP

### READING THE MEMORY MAP TABLE

Each row in the memory map register table (Table 15) has eight bit locations. The memory map is divided into three sections: the chip configuration registers (Address 0x00 to Address 0x02), the device index and transfer registers (Address 0x05 and Address 0xFF), and the ADC function registers (Address 0x08 to Address 0x53).

The leftmost column of the memory map indicates the register address; the default value is shown in the second rightmost column. The Bit 7 column is the start of the default hexadecimal value given. For example, Address 0x09, the clock register, has a default value of 0x01, meaning that Bit 7 = 0, Bit 6 = 0, Bit 5 = 0, Bit 4 = 0, Bit 3 = 0, Bit 2 = 0, Bit 1 = 0, and Bit 0 = 1, or 0000 0001 in binary. This setting is the default for the duty cycle stabilizer in the on condition. By writing a 0 to Bit 0 of this address, followed by 0x01 in the device update register (Address 0xFF[0], the transfer bit), the duty cycle stabilizer is turned off. It is important to follow each write sequence with a transfer bit to update the SPI registers. For more information about this and other functions, consult the AN-877 Application Note, *Interfacing to High Speed ADCs via SPI*.

### RESERVED LOCATIONS

Undefined memory locations should not be written to except when writing the default values suggested in this data sheet. Blank cells in Table 15 should be considered reserved bits and have a 0 written into their registers during power-up.

### DEFAULT VALUES

When the AD9639 comes out of a reset, critical registers are preloaded with default values. These values are indicated in Table 15.

### LOGIC LEVELS

In Table 15, “bit is set” is synonymous with “bit is set to Logic 1” or “writing Logic 1 for the bit.” Similarly, “bit is cleared” is synonymous with “bit is set to Logic 0” or “writing Logic 0 for the bit.”

# AD9639

**Table 15. Memory Map Register**

| Addr. (Hex)                                | Register Name                    | (MSB) Bit 7   | Bit 6  | Bit 5   | Bit 4  | Bit 3  | Bit 2   | Bit 1                                     | (LSB) Bit 0  | Default Value (Hex) | Comments  |   |
|--|----------------------------------|---|--|---|--|--|---|---|--|---------------------|---|---|
| <b>Chip Configuration Registers</b>        |                                  |   |  |   |  |  |   |   |  |                     |   |   |
| 0x00                                       | chip_port_config (local, master) | SDO active (not required, ignored if not used)        | LSB first  | Soft reset  | 16-bit address (default mode for ADCs)                     |  |   |   |  | 0x18                |   |   |
| 0x01                                       | chip_id (global)                 | 8-bit chip ID, Bits[2:0]<br>0x29: AD9639, 12-bit quad |  |   |  |  |   |   |  |                     |   | Read only.                                  |
| 0x02                                       | chip_grade (global)              |   | Speed grade<br>010 = 170 MSPS<br>100 = 210 MSPS                              |   |  |  |   |   |  |                     |   | Read only.                                  |
| <b>Device Index and Transfer Registers</b> |                                  |   |  |   |  |  |   |   |  |                     |   |   |
| 0x05                                       | device_index_A (global)          |   |  |   |  | ADC A  | ADC B   | ADC C                                     | ADC D  | 0x0F                | Bits are set to determine which device on chip receives the next write command. The default is all devices on chip. |   |
| 0xFF                                       | device_update (local, master)    |   |  |   |  |  |   |   | SW transfer<br>1 = on<br>0 = off (default)   | 0x00                | Synchronously transfers data from the master shift register to the slave.   |   |
| <b>ADC Function Registers</b>              |                                  |   |  |   |  |  |   |   |  |                     |   |   |
| 0x08                                       | Modes (local)                    |   | External PDWN pin function<br>00 = full power-down (default)<br>01 = standby |   |  |  |   |   | Power-down mode<br>00 = chip run (default)<br>01 = full power-down<br>10 = standby<br>11 = reset |                     | 0x00  | Determines generic modes of chip operation. |
| 0x09                                       | Clock (global)                   |   |  |   |  |  |   |   | Duty cycle stabilize<br>1 = on (default)<br>0 = off  | 0x01                | Turns the internal duty cycle stabilizer on and off.  |   |
| 0x0D                                       | test_io (local)                  |   |  | Reset PN sequence long gen<br>1 = on<br>0 = off (default) | Reset PN sequence short gen<br>1 = on<br>0 = off (default) | Flexible output test mode<br>0000 = off (normal operation)<br>0001 = midscale short<br>0010 = +FS short<br>0011 = -FS short<br>0100 = checkerboard output<br>0101 = PN 23 sequence<br>0110 = PN 9 sequence<br>0111 = 1/0 word toggle |   |   |  | 0x00                | When set, the test data is placed on the output pins in place of normal data.                                       |   |
| 0x0E                                       | test_bist (local)                |   |  |   |  |  | BIST init<br>1 = on<br>0 = off (default)                |   | BIST enable<br>1 = on<br>0 = off (default)   | 0x00                | When Bit 0 is set, the built-in self-test function is initiated.  |   |
| 0x0F                                       | adc_input (local)                |   |  |   |  |  | Analog disconnect enable<br>1 = on<br>0 = off (default) | VCM enable<br>1 = on<br>0 = off (default) |  | 0x00                |   |   |



| Addr. (Hex) | Register Name              | (MSB) Bit 7 | Bit 6 | Bit 5 | Bit 4  | Bit 3 | Bit 2  | Bit 1 | (LSB) Bit 0   | Default Value (Hex) | Comments   |   |
|-------------|----------------------------|-------------|-------|-------|--|-------|--|-------|---|---------------------|--|---|
| 0x10        | Offset (local)             |             |       |       |  |       |  |       |   | 0x00                | 6-bit device offset adjustment[5:0]<br>011111 = +31 LSB<br>011110 = +30 LSB<br>011101 = +29 LSB<br>...<br>000010 = +2 LSB<br>000001 = +1 LSB<br>000000 = 0 LSB<br>111111 = -1 LSB<br>111110 = -2 LSB<br>111101 = -3 LSB<br>...<br>100001 = -31 LSB<br>100000 = -32 LSB | Device offset trim.                       |
| 0x14        | output_mode (local/global) |             |       |       | Output enable bar (local)<br>1 = off<br>0 = on (default) |       | Output invert enable (global)<br>1 = on<br>0 = off (default) |       | Data format select (global)<br>00 = offset binary (default)<br>01 = twos complement<br>10 = gray code | 0x00                | Configures the outputs and the format of the data.   |   |
| 0x15        | output_adjust (global)     |             |       |       |  |       |  |       | Output driver current[1:0]<br>00 = 400 mV (default)<br>01 = 500 mV<br>10 = 440 mV<br>11 = 320 mV      | 0x00                | VCM output adjustments.  |   |
| 0x18        | V <sub>REF</sub> (global)  |             |       |       |  |       |  |       |   | 0x00                | Ref_Vfs[4:0]<br>Reference full-scale adjust<br>10000 = 0.98 V p-p<br>10001 = 1.00 V p-p<br>10010 = 1.02 V p-p<br>10011 = 1.04 V p-p<br>...<br>11111 = 1.23 V p-p<br>00000 = 1.25 V p-p<br>00001 = 1.27 V p-p<br>...<br>01110 = 1.48 V p-p<br>01111 = 1.5 V p-p         | Select adjustments for V <sub>REF</sub> . |
| 0x19        | user_patt1_lsb (local)     | B7          | B6    | B5    | B4   | B3    | B2   | B1    | B0  | 0xAA                | User-Defined Pattern 1 LSB.  |   |
| 0x1A        | user_patt1_msb (local)     | B15         | B14   | B13   | B12  | B11   | B10  | B9    | B8  | 0xAA                | User-Defined Pattern 1 MSB.  |   |
| 0x1B        | user_patt2_lsb (local)     | B7          | B6    | B5    | B4   | B3    | B2   | B1    | B0  | 0xAA                | User-Defined Pattern 2 LSB.  |   |
| 0x1C        | user_patt2_msb (local)     | B15         | B14   | B13   | B12  | B11   | B10  | B9    | B8  | 0xAA                | User-Defined Pattern 2 MSB.  |   |
| 0x1D        | user_patt3_lsb (local)     | B7          | B6    | B5    | B4   | B3    | B2   | B1    | B0  | 0xAA                | User-Defined Pattern 3 LSB.  |   |
| 0x1E        | user_patt3_msb (local)     | B15         | B14   | B13   | B12  | B11   | B10  | B9    | B8  | 0xAA                | User-Defined Pattern 3 MSB.  |   |
| 0x1F        | user_patt4_lsb (local)     | B7          | B6    | B5    | B4   | B3    | B2   | B1    | B0  | 0xAA                | User-Defined Pattern 4 LSB.  |   |
| 0x20        | user_patt4_msb (local)     | B15         | B14   | B13   | B12  | B11   | B10  | B9    | B8  | 0xCC                | User-Defined Pattern 4 MSB.  |   |

# AD9639

| Addr. (Hex) | Register Name             | (MSB) Bit 7  | Bit 6 | Bit 5  | Bit 4 | Bit 3   | Bit 2   | Bit 1  | (LSB) Bit 0  | Default Value (Hex) | Comments  |
|-------------|---------------------------|--|-------|--|-------|---|---|--|--|---------------------|---|
| 0x21        | serial_control (global)   |  |       |  |       | PLL high encode rate mode (global)<br>0 = low rate<br>1 = high rate (default)   |   |  |  | 0x08                | Serial stream control.  |
| 0x24        | misr_lsb (local)          | B7   | B6    | B5   | B4    | B3  | B2  | B1   | B0   | 0x00                | Least significant byte of MISR. Read only.                    |
| 0x25        | misr_msb (local)          | B15  | B14   | B13  | B12   | B11   | B10   | B9   | B8   | 0x00                | Most significant byte of MISR. Read only.                     |
| 0x33        | JESD204 (global)          |  |       |  |       | Over-range in LSB of tail bits<br>0 = over-range disabled (default)<br>1 = over-range enabled   |   |  | Scrambling enable<br>0 = scrambling disabled (default)<br>1 = scrambling enabled | 0x00                |   |
| 0x50        | coarse_gain_adj (local)   | Gain adjust enable<br>1 = on<br>0 = off (default)  |       |  |       | Coarse gain adjust[5:0] = output[63:0]<br>000000 = 0000...0001<br>000001 = 0000...0011<br>000010 = 0000...0111<br>...<br>111101 = 0011...1111<br>111110 = 0111...1111<br>111111 = 1111...1111                 |   |  |  | 0x00                |   |
| 0x51        | fine_gain_adj (local)     |  |       |  |       | Fine gain adjust[3:0] = output[15:0]<br>0000 = 0000000000000001<br>0001 = 0000000000000010<br>0010 = 0000000000000100<br>...<br>1101 = 0010000000000000<br>1110 = 0100000000000000<br>1111 = 1000000000000000 |   |  |  | 0x00                |   |
| 0x52        | gain_cal_ctl              | Temperature sensor enable<br>1 = on<br>0 = off (default)   |       |  |       |   | Gain quarter LSB<br>1 = on<br>0 = off (default) | Gain cal resetb<br>1 = on (default)<br>0 = off   | Gain cal enable<br>1 = on<br>0 = off (default)                                   | 0x02                |   |
| 0x53        | Dynamic pgm pins (global) | pgm_3<br>00 = sync<br>01 = Standby A<br>10 = Standby A and Standby D<br>11 = Standby A and Standby B |       | pgm_2<br>00 = sync<br>01 = Standby B<br>10 = Standby B and Standby C<br>11 = Standby B and Standby A |       | pgm_1<br>00 = sync<br>01 = Standby C<br>10 = Standby C and Standby B<br>11 = Standby C and Standby D  |   | pgm_0<br>00 = sync<br>01 = Standby D<br>10 = Standby D and Standby A<br>11 = Standby D and Standby C |  | 0x00                | Standby = ADC core off, PN23 enabled, serial channel enabled. |

## APPLICATIONS INFORMATION

### POWER AND GROUND RECOMMENDATIONS

When connecting power to the AD9639, it is recommended that two separate 1.8 V supplies be used: one for analog (AVDD) and one for digital (DRVDD). If only one supply is available, it should be routed to the AVDD pin first and then tapped off and isolated with a ferrite bead or a filter choke preceded by decoupling capacitors for the DRVDD pin. Several different decoupling capacitors can be used to cover both high and low frequencies. Locate these capacitors close to the point of entry at the PCB level and close to the parts, with minimal trace lengths.

A single PCB ground plane should be sufficient when using the AD9639. With proper decoupling and smart partitioning of the analog, digital, and clock sections of the PCB, optimum performance can easily be achieved.

### EXPOSED PADDLE THERMAL HEAT SLUG RECOMMENDATIONS

It is required that the exposed paddle on the underside of the ADC be connected to analog ground (AGND) to achieve the best electrical and thermal performance of the AD9639. An exposed continuous copper plane on the PCB should mate to the AD9639 exposed paddle, Pin 0. The copper plane should have several vias to achieve the lowest possible resistive thermal path for heat dissipation to flow through the bottom of the PCB. These vias should be solder-filled or plugged with nonconductive epoxy.

To maximize the coverage and adhesion between the ADC and PCB, partition the continuous copper plane into several uniform sections by overlaying a silkscreen on the PCB. This provides several tie points between the ADC and PCB during the reflow process, whereas using one continuous plane with no partitions guarantees only one tie point. See Figure 64 for a PCB layout example. For detailed information on packaging and the PCB layout of chip scale packages, see the AN-772 Application Note, *A Design and Manufacturing Guide for the Lead Frame Chip Scale Package (LFCSP)*, at [www.analog.com](http://www.analog.com).

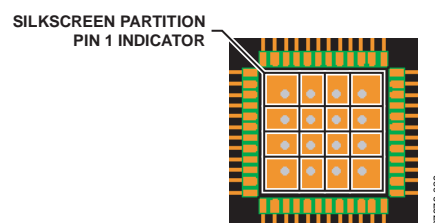
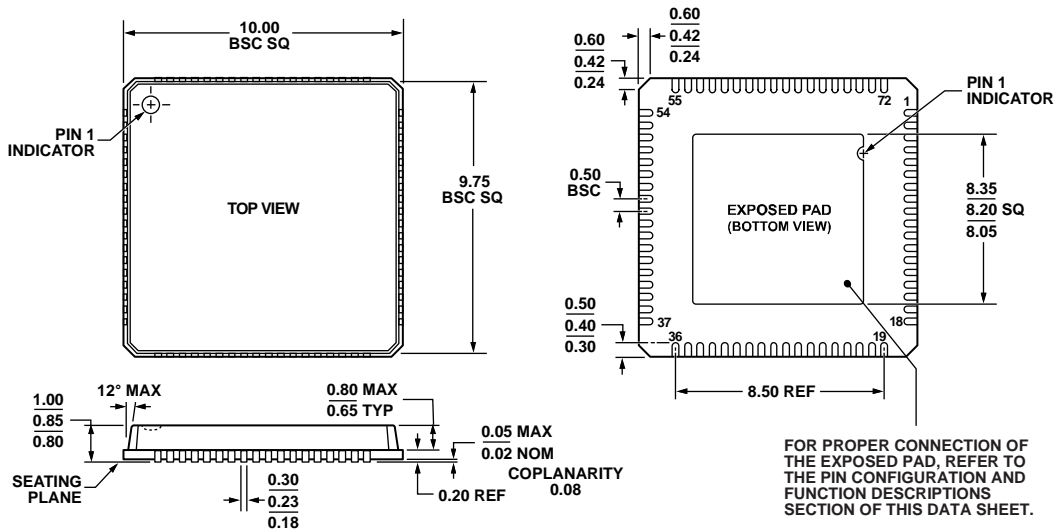


Figure 64. Typical PCB Layout

OUTLINE DIMENSIONS



COMPLIANT TO JEDEC STANDARDS MO-220-VNND-4

Figure 65. 72-Lead Lead Frame Chip Scale Package [LFCSP\_VQ]  
10 mm × 10 mm Body, Very Thin Quad  
(CP-72-3)

Dimensions shown in millimeters

039/408-A

ORDERING GUIDE

| Model <sup>1</sup> | Temperature Range | Package Description                              | Package Option |
|--------------------|-------------------|--|----------------|
| AD9639BCPZ-170     | -40°C to +85°C    | 72-Lead Lead Frame Chip Scale Package [LFCSP_VQ] | CP-72-3        |
| AD9639BCPZRL-170   | -40°C to +85°C    | 72-Lead Lead Frame Chip Scale Package [LFCSP_VQ] | CP-72-3        |
| AD9639BCPZ-210     | -40°C to +85°C    | 72-Lead Lead Frame Chip Scale Package [LFCSP_VQ] | CP-72-3        |
| AD9639BCPZRL-210   | -40°C to +85°C    | 72-Lead Lead Frame Chip Scale Package [LFCSP_VQ] | CP-72-3        |
| AD9639-210KITZ     |                   | Evaluation Board                                 |                |

<sup>1</sup> Z = RoHS Compliant Part.



Компания «ЭлектроПласт» предлагает заключение долгосрочных отношений при поставках импортных электронных компонентов на взаимовыгодных условиях!

Наши преимущества:

- Оперативные поставки широкого спектра электронных компонентов отечественного и импортного производства напрямую от производителей и с крупнейших мировых складов;
- Поставка более 17-ти миллионов наименований электронных компонентов;
- Поставка сложных, дефицитных, либо снятых с производства позиций;
- Оперативные сроки поставки под заказ (от 5 рабочих дней);
- Экспресс доставка в любую точку России;
- Техническая поддержка проекта, помощь в подборе аналогов, поставка прототипов;
- Система менеджмента качества сертифицирована по Международному стандарту ISO 9001;
- Лицензия ФСБ на осуществление работ с использованием сведений, составляющих государственную тайну;
- Поставка специализированных компонентов (Xilinx, Altera, Analog Devices, Intersil, Interpoint, Microsemi, Aeroflex, Peregrine, Syfer, Eurofarad, Texas Instrument, Miteq, Cobham, E2V, MA-COM, Hittite, Mini-Circuits, General Dynamics и др.);

Помимо этого, одним из направлений компании «ЭлектроПласт» является направление «Источники питания». Мы предлагаем Вам помощь Конструкторского отдела:

- Подбор оптимального решения, техническое обоснование при выборе компонента;
- Подбор аналогов;
- Консультации по применению компонента;
- Поставка образцов и прототипов;
- Техническая поддержка проекта;
- Защита от снятия компонента с производства.



#### Как с нами связаться

**Телефон:** 8 (812) 309 58 32 (многоканальный)

**Факс:** 8 (812) 320-02-42

**Электронная почта:** [org@eplast1.ru](mailto:org@eplast1.ru)

**Адрес:** 198099, г. Санкт-Петербург, ул. Калинина, дом 2, корпус 4, литера А.