

### Radial Lead Type

Series: NHG Type : A

Japan  
Malaysia  
China  
Taiwan



- Features Endurance: +105°C 1000 to 2000 h  
Smaller than Series NHE

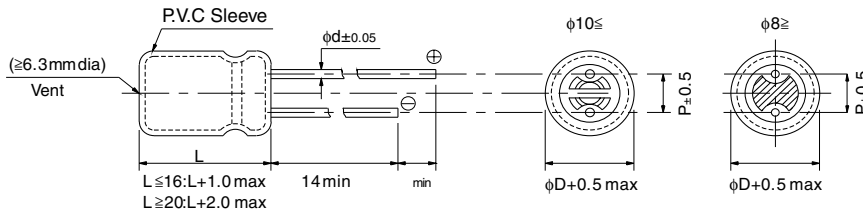
■ Specifications

|                       |   |   |
|-----------------------|---|---|
| Category temp. range  | -55 to +105°C   | -25 to +105°C   |
| Rated W.V. Range      | 6.3 to 100 V.DC   | 160 to 450 V .DC  |
| Nominal Cap. Range    | 0.1 to 22000 μF   | 1.0 to 330 μ F  |
| Capacitance Tolerance | ±20 % (120Hz/+20°C)   |   |
| DC Leakage Current    | I < 0.01 CV or 3(μ A) after 2 minutes application of rated working voltage at +20°C   | I < 0.06 CV + 10(μ A) after 2 minutes application of rated working voltage at +20°C |
| Dissipation Factor    | Please see the attached standard products list  |   |
| Endurance             | After following life test with DC voltage and +105±2°C ripple current value applied (The sum of DC and ripple peak voltage shall not exceed the rated working voltage), the capacitors shall meet the limits specified below.<br>Duration : 6.3 to 100V.W. ; (φ5 to 8) =1000 hours , (φ10 to 18)= 2000 hours<br>160 to 450V.W. ; 2000 hours<br>Post test requirements at +20 °C |   |
|                       | Capacitance change  | ±20% of initial measured value  |
|                       | D.F.  | ≤ 200 % of initial specified value  |
|                       | DC leakage current  | ≤ initial specified value   |
| Shelf Life            | After storage for 1000 hours at +105±2 °C with no voltage applied and then being stabilized at +20 °C, capacitors shall meet the limits specified in "Endurance".(With voltage treatment)   |   |

■ Frequency correction factor for ripple current

| W.V. (V.DC) | Cap. (μF)     | Frequency(Hz) |     |      |      |      |
|-------------|---------------|---------------|-----|------|------|------|
|             |               | 60            | 120 | 1k   | 10k  | 100k |
| 6.3 to 100  | 0.1 to 33     | 0.75          | 1   | 1.55 | 1.80 | 2.00 |
|             | 47 to 470     | 0.80          | 1   | 1.35 | 1.50 | 1.50 |
|             | 1000 to 22000 | 0.85          | 1   | 1.10 | 1.15 | 1.15 |
| 160 to 450  | 1 to 330      | 0.80          | 1   | 1.35 | 1.50 | 1.50 |

■ Dimensions in mm (not to scale)



|              |     |     |     |     |      |     |     |
|--------------|-----|-----|-----|-----|------|-----|-----|
| Body Dia. φD | 5   | 6.3 | 8   | 10  | 12.5 | 16  | 18  |
| Lead Dia. φd | 0.5 | 0.5 | 0.6 | 0.6 | 0.6  | 0.8 | 0.8 |
| Lead space P | 2.0 | 2.5 | 3.5 | 5.0 | 5.0  | 7.5 | 7.5 |

### ■ Standard Products

| W.V.<br>(V) | Cap.<br>(±20%)<br>(μF) | Case size    |                | Specification                                 |                            |                           | Lead Length          |                  |                      |                      | Part No.      | Min. Packaging Q'ty        |                 |
|-------------|------------------------|--------------|----------------|---|----------------------------|---------------------------|----------------------|------------------|----------------------|----------------------|---------------|----------------------------|-----------------|
|             |                        | Dia.<br>(mm) | Length<br>(mm) | Ripple current<br>(120Hz)<br>(+105°C)<br>(mA) | D.F.<br>(120Hz)<br>(+20°C) | Endu-<br>rance<br>(hours) | Lead<br>Dia.<br>(mm) | Lead Space       |                      |                      |               | Straight<br>Leads<br>(pcs) | Taping<br>(pcs) |
|             |                        |              |                |   |                            |                           |                      | Straight<br>(mm) | Taping<br>*B<br>(mm) | Taping<br>*i<br>(mm) |               |                            |                 |
| 6.3         | 220                    | 5            | 11             | 140   | 0.28                       | 1000                      | 0.5                  | 2.0              | 5.0                  | 2.5                  | ECA0JHG221( ) | 200                        | 2000            |
|             | 470                    | 6.3          | 11.2           | 230   | 0.28                       | 1000                      | 0.5                  | 2.5              | 5.0                  | 2.5                  | ECA0JHG471( ) | 200                        | 2000            |
|             | 1000                   | 8            | 11.5           | 380   | 0.28                       | 1000                      | 0.6                  | 3.5              | 5.0                  |                      | ECA0JHG102( ) | 200                        | 1000            |
|             | 2200                   | 10           | 16             | 710   | 0.30                       | 2000                      | 0.6                  | 5.0              | 5.0                  |                      | ECA0JHG222( ) | 200                        | 500             |
|             | 3300                   | 10           | 20             | 840   | 0.32                       | 2000                      | 0.6                  | 5.0              | 5.0                  |                      | ECA0JHG332( ) | 200                        | 500             |
|             | 4700                   | 12.5         | 20             | 1090  | 0.34                       | 2000                      | 0.6                  | 5.0              | 5.0                  |                      | ECA0JHG472( ) | 200                        | 500             |
|             | 6800                   | 12.5         | 25             | 1350  | 0.38                       | 2000                      | 0.6                  | 5.0              | 5.0                  |                      | ECA0JHG682( ) | 200                        | 500             |
|             | 10000                  | 16           | 25             | 1650  | 0.46                       | 2000                      | 0.8                  | 7.5              | 7.5                  |                      | ECA0JHG103( ) | 100                        | 250             |
|             | 15000                  | 16           | 31.5           | 2010  | 0.56                       | 2000                      | 0.8                  | 7.5              |                      |                      | ECA0JHG153    | 100                        |                 |
| 22000       | 18                     | 35.5         | 2350           | 0.70  | 2000                       | 0.8                       | 7.5                  |                  |                      | ECA0JHG223           | 50            |                            |                 |
| 10          | 330                    | 6.3          | 11.2           | 200   | 0.24                       | 1000                      | 0.5                  | 2.5              | 5.0                  | 2.5                  | ECA1AHG331( ) | 200                        | 2000            |
|             | 470                    | 8            | 11.5           | 250   | 0.24                       | 1000                      | 0.6                  | 3.5              | 5.0                  |                      | ECA1AHG471( ) | 200                        | 1000            |
|             | 1000                   | 10           | 12.5           | 460   | 0.24                       | 2000                      | 0.6                  | 5.0              | 5.0                  |                      | ECA1AHG102( ) | 200                        | 500             |
|             | 2200                   | 10           | 20             | 760   | 0.26                       | 2000                      | 0.6                  | 5.0              | 5.0                  |                      | ECA1AHG222( ) | 200                        | 500             |
|             | 3300                   | 12.5         | 20             | 1000  | 0.28                       | 2000                      | 0.6                  | 5.0              | 5.0                  |                      | ECA1AHG332( ) | 200                        | 500             |
|             | 4700                   | 12.5         | 25             | 1260  | 0.30                       | 2000                      | 0.6                  | 5.0              | 5.0                  |                      | ECA1AHG472( ) | 200                        | 500             |
|             | 6800                   | 16           | 25             | 1570  | 0.34                       | 2000                      | 0.8                  | 7.5              | 7.5                  |                      | ECA1AHG682( ) | 100                        | 250             |
|             | 10000                  | 16           | 31.5           | 1890  | 0.42                       | 2000                      | 0.8                  | 7.5              |                      |                      | ECA1AHG103    | 100                        |                 |
|             | 15000                  | 18           | 35.5           | 2180  | 0.52                       | 2000                      | 0.8                  | 7.5              |                      |                      | ECA1AHG153    | 50                         |                 |
| 16          | 100                    | 5            | 11             | 110   | 0.20                       | 1000                      | 0.5                  | 2.0              | 5.0                  | 2.5                  | ECA1CHG101( ) | 200                        | 2000            |
|             | 220                    | 6.3          | 11.2           | 180   | 0.20                       | 1000                      | 0.5                  | 2.5              | 5.0                  | 2.5                  | ECA1CHG221( ) | 200                        | 2000            |
|             | 330                    | 8            | 11.5           | 260   | 0.20                       | 1000                      | 0.6                  | 3.5              | 5.0                  |                      | ECA1CHG331( ) | 200                        | 1000            |
|             | 470                    | 8            | 11.5           | 310   | 0.20                       | 1000                      | 0.6                  | 3.5              | 5.0                  |                      | ECA1CHG471( ) | 200                        | 1000            |
|             | 1000                   | 10           | 16             | 560   | 0.20                       | 2000                      | 0.6                  | 5.0              | 5.0                  |                      | ECA1CHG102( ) | 200                        | 500             |
|             | 2200                   | 12.5         | 20             | 920   | 0.22                       | 2000                      | 0.6                  | 5.0              | 5.0                  |                      | ECA1CHG222( ) | 200                        | 500             |
|             | 3300                   | 12.5         | 25             | 1170  | 0.24                       | 2000                      | 0.6                  | 5.0              | 5.0                  |                      | ECA1CHG332( ) | 200                        | 500             |
|             | 4700                   | 16           | 25             | 1480  | 0.26                       | 2000                      | 0.8                  | 7.5              | 7.5                  |                      | ECA1CHG472( ) | 100                        | 250             |
|             | 6800                   | 16           | 31.5           | 1780  | 0.30                       | 2000                      | 0.8                  | 7.5              |                      |                      | ECA1CHG682    | 100                        |                 |
| 10000       | 18                     | 35.5         | 2060           | 0.38  | 2000                       | 0.8                       | 7.5                  |                  |                      | ECA1CHG103           | 50            |                            |                 |
| 25          | 47                     | 5            | 11             | 91  | 0.16                       | 1000                      | 0.5                  | 2.0              | 5.0                  | 2.5                  | ECA1EHG470( ) | 200                        | 2000            |
|             | 100                    | 6.3          | 11.2           | 130   | 0.16                       | 1000                      | 0.5                  | 2.5              | 5.0                  | 2.5                  | ECA1EHG101( ) | 200                        | 2000            |
|             | 220                    | 8            | 11.5           | 230   | 0.16                       | 1000                      | 0.6                  | 3.5              | 5.0                  |                      | ECA1EHG221( ) | 200                        | 1000            |
|             | 330                    | 8            | 11.5           | 310   | 0.16                       | 1000                      | 0.6                  | 3.5              | 5.0                  |                      | ECA1EHG331( ) | 200                        | 1000            |
|             | 470                    | 10           | 12.5           | 380   | 0.16                       | 2000                      | 0.6                  | 5.0              | 5.0                  |                      | ECA1EHG471( ) | 200                        | 500             |
|             | 1000                   | 10           | 20             | 680   | 0.16                       | 2000                      | 0.6                  | 5.0              | 5.0                  |                      | ECA1EHG102( ) | 200                        | 500             |
|             | 2200                   | 12.5         | 25             | 1090  | 0.18                       | 2000                      | 0.6                  | 5.0              | 5.0                  |                      | ECA1EHG222( ) | 200                        | 500             |
|             | 3300                   | 16           | 25             | 1400  | 0.20                       | 2000                      | 0.8                  | 7.5              | 7.5                  |                      | ECA1EHG332( ) | 100                        | 250             |
|             | 4700                   | 16           | 31.5           | 1750  | 0.22                       | 2000                      | 0.8                  | 7.5              |                      |                      | ECA1EHG472    | 100                        |                 |
| 6800        | 18                     | 35.5         | 2040           | 0.26  | 2000                       | 0.8                       | 7.5                  |                  |                      | ECA1EHG682           | 50            |                            |                 |
| 35          | 47                     | 5            | 11             | 90  | 0.14                       | 1000                      | 0.5                  | 2.0              | 5.0                  | 2.5                  | ECA1VHG470( ) | 200                        | 2000            |
|             | 100                    | 6.3          | 11.2           | 150   | 0.14                       | 1000                      | 0.5                  | 2.5              | 5.0                  | 2.5                  | ECA1VHG101( ) | 200                        | 2000            |
|             | 220                    | 8            | 11.5           | 270   | 0.14                       | 1000                      | 0.6                  | 3.5              | 5.0                  |                      | ECA1VHG221( ) | 200                        | 1000            |

When requesting taped product, please put the letter "B" or "i" between the "( )". Lead wire pitch B=5mm, 7.5mm. i=2.5mm.

### ■ Standard Products

| W.V.<br>(V) | Cap.<br>(±20%)<br>(μF) | Case size    |                | Specification                                 |                            |                           | Lead Length          |                  |                      |                      | Part No.      | Min. Packaging Qty         |                 |
|-------------|------------------------|--------------|----------------|---|----------------------------|---------------------------|----------------------|------------------|----------------------|----------------------|---------------|----------------------------|-----------------|
|             |                        | Dia.<br>(mm) | Length<br>(mm) | Ripple current<br>(120Hz)<br>(+105°C)<br>(mA) | D.F.<br>(120Hz)<br>(+20°C) | Endu-<br>rance<br>(hours) | Lead<br>Dia.<br>(mm) | Lead Space       |                      |                      |               | Straight<br>Leads<br>(pcs) | Taping<br>(pcs) |
|             |                        |              |                |   |                            |                           |                      | Straight<br>(mm) | Taping<br>*B<br>(mm) | Taping<br>*i<br>(mm) |               |                            |                 |
| 35          | 330                    | 10           | 12.5           | 350   | 0.14                       | 2000                      | 0.6                  | 5.0              | 5.0                  |                      | ECA1VHG331( ) | 200                        | 500             |
|             | 470                    | 10           | 16             | 460   | 0.14                       | 2000                      | 0.6                  | 5.0              | 5.0                  |                      | ECA1VHG471( ) | 200                        | 500             |
|             | 1000                   | 12.5         | 20             | 810   | 0.14                       | 2000                      | 0.6                  | 5.0              | 5.0                  |                      | ECA1VHG102( ) | 200                        | 500             |
|             | 2200                   | 16           | 25             | 1260  | 0.16                       | 2000                      | 0.8                  | 7.5              | 7.5                  |                      | ECA1VHG222( ) | 100                        | 250             |
|             | 3300                   | 16           | 31.5           | 1610  | 0.18                       | 2000                      | 0.8                  | 7.5              |                      |                      | ECA1VHG332    | 100                        |                 |
|             | 4700                   | 18           | 35.5           | 1910  | 0.20                       | 2000                      | 0.8                  | 7.5              |                      |                      | ECA1VHG472    | 50                         |                 |
| 50          | 0.1                    | 5            | 11             | 1.1   | 0.12                       | 1000                      | 0.5                  | 2.0              | 5.0                  | 2.5                  | ECA1HHG0R1( ) | 200                        | 2000            |
|             | 0.22                   | 5            | 11             | 2.3   | 0.12                       | 1000                      | 0.5                  | 2.0              | 5.0                  | 2.5                  | ECA1HHGR22( ) | 200                        | 2000            |
|             | 0.33                   | 5            | 11             | 3.5   | 0.12                       | 1000                      | 0.5                  | 2.0              | 5.0                  | 2.5                  | ECA1HHGR33( ) | 200                        | 2000            |
|             | 0.47                   | 5            | 11             | 5   | 0.12                       | 1000                      | 0.5                  | 2.0              | 5.0                  | 2.5                  | ECA1HHGR47( ) | 200                        | 2000            |
|             | 1                      | 5            | 11             | 10  | 0.12                       | 1000                      | 0.5                  | 2.0              | 5.0                  | 2.5                  | ECA1HHG010( ) | 200                        | 2000            |
|             | 2.2                    | 5            | 11             | 18  | 0.12                       | 1000                      | 0.5                  | 2.0              | 5.0                  | 2.5                  | ECA1HHG2R2( ) | 200                        | 2000            |
|             | 3.3                    | 5            | 11             | 22  | 0.12                       | 1000                      | 0.5                  | 2.0              | 5.0                  | 2.5                  | ECA1HHG3R3( ) | 200                        | 2000            |
|             | 4.7                    | 5            | 11             | 26  | 0.12                       | 1000                      | 0.5                  | 2.0              | 5.0                  | 2.5                  | ECA1HHG4R7( ) | 200                        | 2000            |
|             | 10                     | 5            | 11             | 39  | 0.12                       | 1000                      | 0.5                  | 2.0              | 5.0                  | 2.5                  | ECA1HHG100( ) | 200                        | 2000            |
|             | 22                     | 5            | 11             | 65  | 0.12                       | 1000                      | 0.5                  | 2.0              | 5.0                  | 2.5                  | ECA1HHG220( ) | 200                        | 2000            |
|             | 33                     | 5            | 11             | 90  | 0.12                       | 1000                      | 0.5                  | 2.0              | 5.0                  | 2.5                  | ECA1HHG330( ) | 200                        | 2000            |
|             | 47                     | 6.3          | 11.2           | 110   | 0.12                       | 1000                      | 0.5                  | 2.5              | 5.0                  | 2.5                  | ECA1HHG470( ) | 200                        | 2000            |
|             | 100                    | 8            | 11.5           | 180   | 0.12                       | 1000                      | 0.6                  | 3.5              | 5.0                  |                      | ECA1HHG101( ) | 200                        | 1000            |
|             | 220                    | 10           | 12.5           | 300   | 0.12                       | 2000                      | 0.6                  | 5.0              | 5.0                  |                      | ECA1HHG221( ) | 200                        | 500             |
|             | 330                    | 10           | 16             | 410   | 0.12                       | 2000                      | 0.6                  | 5.0              | 5.0                  |                      | ECA1HHG331( ) | 200                        | 500             |
| 470         | 10                     | 20           | 530            | 0.12  | 2000                       | 0.6                       | 5.0                  | 5.0              |                      | ECA1HHG471( )        | 200           | 500                        |                 |
| 1000        | 12.5                   | 25           | 950            | 0.12  | 2000                       | 0.6                       | 5.0                  | 5.0              |                      | ECA1HHG102( )        | 200           | 500                        |                 |
| 2200        | 16                     | 31.5         | 1470           | 0.14  | 2000                       | 0.8                       | 7.5                  |                  |                      | ECA1HHG222           | 100           |                            |                 |
| 3300        | 18                     | 35.5         | 1770           | 0.16  | 2000                       | 0.8                       | 7.5                  |                  |                      | ECA1HHG332           | 50            |                            |                 |
| 63          | 10                     | 5            | 11             | 46  | 0.10                       | 1000                      | 0.5                  | 2.0              | 5.0                  | 2.5                  | ECA1JHG100( ) | 200                        | 2000            |
|             | 22                     | 5            | 11             | 71  | 0.10                       | 1000                      | 0.5                  | 2.0              | 5.0                  | 2.5                  | ECA1JHG220( ) | 200                        | 2000            |
|             | 33                     | 6.3          | 11.2           | 100   | 0.10                       | 1000                      | 0.5                  | 2.5              | 5.0                  | 2.5                  | ECA1JHG330( ) | 200                        | 2000            |
|             | 47                     | 6.3          | 11.2           | 120   | 0.10                       | 1000                      | 0.5                  | 2.5              | 5.0                  | 2.5                  | ECA1JHG470( ) | 200                        | 2000            |
|             | 100                    | 10           | 12.5           | 215   | 0.10                       | 2000                      | 0.6                  | 5.0              | 5.0                  |                      | ECA1JHG101( ) | 200                        | 500             |
|             | 220                    | 10           | 16             | 335   | 0.10                       | 2000                      | 0.6                  | 5.0              | 5.0                  |                      | ECA1JHG221( ) | 200                        | 500             |
|             | 330                    | 10           | 20             | 510   | 0.10                       | 2000                      | 0.6                  | 5.0              | 5.0                  |                      | ECA1JHG331( ) | 200                        | 500             |
|             | 470                    | 12.5         | 20             | 640   | 0.10                       | 2000                      | 0.6                  | 5.0              | 5.0                  |                      | ECA1JHG471( ) | 200                        | 500             |
|             | 1000                   | 16           | 25             | 930   | 0.10                       | 2000                      | 0.8                  | 7.5              | 7.5                  |                      | ECA1JHG102( ) | 100                        | 250             |
| 2200        | 18                     | 35.5         | 1610           | 0.12  | 2000                       | 0.8                       | 7.5                  |                  |                      | ECA1JHG222           | 50            |                            |                 |
| 100         | 0.47                   | 5            | 11             | 9   | 0.08                       | 1000                      | 0.5                  | 2.0              | 5.0                  | 2.5                  | ECA2AHGR47( ) | 200                        | 2000            |
|             | 1                      | 5            | 11             | 14  | 0.08                       | 1000                      | 0.5                  | 2.0              | 5.0                  | 2.5                  | ECA2AHG010( ) | 200                        | 2000            |
|             | 2.2                    | 5            | 11             | 21  | 0.08                       | 1000                      | 0.5                  | 2.0              | 5.0                  | 2.5                  | ECA2AHG2R2( ) | 200                        | 2000            |
|             | 3.3                    | 5            | 11             | 31  | 0.08                       | 1000                      | 0.5                  | 2.0              | 5.0                  | 2.5                  | ECA2AHG3R3( ) | 200                        | 2000            |
|             | 4.7                    | 5            | 11             | 38  | 0.08                       | 1000                      | 0.5                  | 2.0              | 5.0                  | 2.5                  | ECA2AHG4R7( ) | 200                        | 2000            |
|             | 10                     | 6.3          | 11.2           | 54  | 0.08                       | 1000                      | 0.5                  | 2.5              | 5.0                  | 2.5                  | ECA2AHG100( ) | 200                        | 2000            |
|             | 22                     | 6.3          | 11.2           | 93  | 0.08                       | 1000                      | 0.5                  | 2.5              | 5.0                  | 2.5                  | ECA2AHG220( ) | 200                        | 2000            |

When requesting taped product, please put the letter "B" or "i" between the "( )". Lead wire pitch B=5mm, 7.5mm. i=2.5mm.

### ■ Standard Products

| W.V.<br>(V) | Cap.<br>(±20%)<br>(μF) | Case size    |                | Specification                                 |                            |                      | Lead Length       |                  |                      |                      | Part No.      | Min. Packaging Qty      |                 |
|-------------|------------------------|--------------|----------------|---|----------------------------|----------------------|-------------------|------------------|----------------------|----------------------|---------------|-------------------------|-----------------|
|             |                        | Dia.<br>(mm) | Length<br>(mm) | Ripple current<br>(120Hz)<br>(+105°C)<br>(mA) | D.F.<br>(120Hz)<br>(+20°C) | Endurance<br>(hours) | Lead Dia.<br>(mm) | Lead Space       |                      |                      |               | Straight Leads<br>(pcs) | Taping<br>(pcs) |
|             |                        |              |                |   |                            |                      |                   | Straight<br>(mm) | Taping<br>*B<br>(mm) | Taping<br>*i<br>(mm) |               |                         |                 |
| 100         | 33                     | 8            | 11.5           | 130   | 0.08                       | 1000                 | 0.6               | 3.5              | 5.0                  |                      | ECA2AHG330( ) | 200                     | 1000            |
|             | 47                     | 10           | 12.5           | 165   | 0.08                       | 2000                 | 0.6               | 5.0              | 5.0                  |                      | ECA2AHG470( ) | 200                     | 500             |
|             | 100                    | 10           | 20             | 265   | 0.08                       | 2000                 | 0.6               | 5.0              | 5.0                  |                      | ECA2AHG101( ) | 200                     | 500             |
|             | 220                    | 12.5         | 25             | 440   | 0.08                       | 2000                 | 0.6               | 5.0              | 5.0                  |                      | ECA2AHG221( ) | 200                     | 500             |
|             | 330                    | 16           | 25             | 540   | 0.08                       | 2000                 | 0.8               | 7.5              | 7.5                  |                      | ECA2AHG331( ) | 100                     | 250             |
|             | 470                    | 16           | 25             | 715   | 0.08                       | 2000                 | 0.8               | 7.5              | 7.5                  |                      | ECA2AHG471( ) | 100                     | 250             |
|             | 1000                   | 18           | 35.5           | 985   | 0.08                       | 2000                 | 0.8               | 7.5              |                      |                      | ECA2AHG102    | 50                      |                 |
| 160         | 1                      | 6.3          | 11.2           | 17  | 0.15                       | 2000                 | 0.5               | 2.5              | 5.0                  | 2.5                  | ECA2CHG010( ) | 200                     | 2000            |
|             | 2.2                    | 6.3          | 11.2           | 25  | 0.15                       | 2000                 | 0.5               | 2.5              | 5.0                  | 2.5                  | ECA2CHG2R2( ) | 200                     | 2000            |
|             | 3.3                    | 6.3          | 11.2           | 36  | 0.15                       | 2000                 | 0.5               | 2.5              | 5.0                  | 2.5                  | ECA2CHG3R3( ) | 200                     | 2000            |
|             | 4.7                    | 6.3          | 11.2           | 43  | 0.15                       | 2000                 | 0.5               | 2.5              | 5.0                  | 2.5                  | ECA2CHG4R7( ) | 200                     | 2000            |
|             | 10                     | 10           | 12.5           | 70  | 0.15                       | 2000                 | 0.6               | 5.0              | 5.0                  |                      | ECA2CHG100( ) | 200                     | 500             |
|             | 22                     | 10           | 20             | 130   | 0.15                       | 2000                 | 0.6               | 5.0              | 5.0                  |                      | ECA2CHG220( ) | 200                     | 500             |
|             | 33                     | 10           | 20             | 180   | 0.15                       | 2000                 | 0.6               | 5.0              | 5.0                  |                      | ECA2CHG330( ) | 200                     | 500             |
|             | 47                     | 12.5         | 20             | 220   | 0.15                       | 2000                 | 0.6               | 5.0              | 5.0                  |                      | ECA2CHG470( ) | 200                     | 500             |
|             | 100                    | 16           | 25             | 335   | 0.15                       | 2000                 | 0.8               | 7.5              | 7.5                  |                      | ECA2CHG101( ) | 100                     | 250             |
|             | 220                    | 16           | 31.5           | 540   | 0.15                       | 2000                 | 0.8               | 7.5              |                      |                      | ECA2CHG221    | 100                     |                 |
| 200         | 1                      | 6.3          | 11.2           | 17  | 0.15                       | 2000                 | 0.5               | 2.5              | 5.0                  | 2.5                  | ECA2DHG010( ) | 200                     | 2000            |
|             | 2.2                    | 6.3          | 11.2           | 25  | 0.15                       | 2000                 | 0.5               | 2.5              | 5.0                  | 2.5                  | ECA2DHG2R2( ) | 200                     | 2000            |
|             | 3.3                    | 6.3          | 11.2           | 36  | 0.15                       | 2000                 | 0.5               | 2.5              | 5.0                  | 2.5                  | ECA2DHG3R3( ) | 200                     | 2000            |
|             | 4.7                    | 8            | 11.5           | 50  | 0.15                       | 2000                 | 0.6               | 3.5              | 5.0                  |                      | ECA2DHG4R7( ) | 200                     | 1000            |
|             | 10                     | 10           | 16             | 80  | 0.15                       | 2000                 | 0.6               | 5.0              | 5.0                  |                      | ECA2DHG100( ) | 200                     | 500             |
|             | 22                     | 10           | 20             | 140   | 0.15                       | 2000                 | 0.6               | 5.0              | 5.0                  |                      | ECA2DHG220( ) | 200                     | 500             |
|             | 33                     | 12.5         | 20             | 190   | 0.15                       | 2000                 | 0.6               | 5.0              | 5.0                  |                      | ECA2DHG330( ) | 200                     | 500             |
|             | 47                     | 12.5         | 20             | 220   | 0.15                       | 2000                 | 0.6               | 5.0              | 5.0                  |                      | ECA2DHG470( ) | 200                     | 500             |
|             | 100                    | 16           | 25             | 335   | 0.15                       | 2000                 | 0.8               | 7.5              | 7.5                  |                      | ECA2DHG101( ) | 100                     | 250             |
|             | 220                    | 18           | 31.5           | 575   | 0.15                       | 2000                 | 0.8               | 7.5              |                      |                      | ECA2DHG221    | 50                      |                 |
| 250         | 1                      | 6.3          | 11.2           | 17  | 0.15                       | 2000                 | 0.5               | 2.5              | 5.0                  | 2.5                  | ECA2EHG010( ) | 200                     | 2000            |
|             | 2.2                    | 6.3          | 11.2           | 29  | 0.15                       | 2000                 | 0.5               | 2.5              | 5.0                  | 2.5                  | ECA2EHG2R2( ) | 200                     | 2000            |
|             | 3.3                    | 8            | 11.5           | 42  | 0.15                       | 2000                 | 0.6               | 3.5              | 5.0                  |                      | ECA2EHG3R3( ) | 200                     | 1000            |
|             | 4.7                    | 8            | 11.5           | 50  | 0.15                       | 2000                 | 0.6               | 3.5              | 5.0                  |                      | ECA2EHG4R7( ) | 200                     | 1000            |
|             | 10                     | 10           | 16             | 88  | 0.15                       | 2000                 | 0.6               | 5.0              | 5.0                  |                      | ECA2EHG100( ) | 200                     | 500             |
|             | 22                     | 12.5         | 20             | 155   | 0.15                       | 2000                 | 0.6               | 5.0              | 5.0                  |                      | ECA2EHG220( ) | 200                     | 500             |
|             | 33                     | 12.5         | 20             | 190   | 0.15                       | 2000                 | 0.6               | 5.0              | 5.0                  |                      | ECA2EHG330( ) | 200                     | 500             |
|             | 47                     | 12.5         | 25             | 230   | 0.15                       | 2000                 | 0.6               | 5.0              | 5.0                  |                      | ECA2EHG470( ) | 200                     | 500             |
|             | 100                    | 16           | 31.5           | 365   | 0.15                       | 2000                 | 0.8               | 7.5              |                      |                      | ECA2EHG101    | 100                     |                 |
| 350         | 1                      | 6.3          | 11.2           | 18  | 0.20                       | 2000                 | 0.5               | 2.5              | 5.0                  | 2.5                  | ECA2VHG010( ) | 200                     | 2000            |
|             | 2.2                    | 8            | 11.5           | 31  | 0.20                       | 2000                 | 0.6               | 3.5              | 5.0                  |                      | ECA2VHG2R2( ) | 200                     | 1000            |
|             | 3.3                    | 10           | 12.5           | 38  | 0.20                       | 2000                 | 0.6               | 5.0              | 5.0                  |                      | ECA2VHG3R3( ) | 200                     | 500             |
|             | 4.7                    | 10           | 16             | 50  | 0.20                       | 2000                 | 0.6               | 5.0              | 5.0                  |                      | ECA2VHG4R7( ) | 200                     | 500             |
|             | 10                     | 10           | 20             | 82  | 0.20                       | 2000                 | 0.6               | 5.0              | 5.0                  |                      | ECA2VHG100( ) | 200                     | 500             |

When requesting taped product, please put the letter "B" or "i" between the "( )". Lead wire pitch B=5mm, 7.5mm. i=2.5mm.

### ■ Standard Products

| W.V. | Cap.<br>(±20%) | Case size |        | Specification                                 |                            |                           | Lead Length  |                  |                      |                      | Part No.      | Min. Packaging Qty |        |
|------|----------------|-----------|--------|---|----------------------------|---------------------------|--------------|------------------|----------------------|----------------------|---------------|--------------------|--------|
|      |                | Dia.      | Length | Ripple current<br>(120Hz)<br>(+105°C)<br>(mA) | D.F.<br>(120Hz)<br>(+20°C) | Endu-<br>rance<br>(hours) | Lead<br>Dia. | Lead Space       |                      |                      |               | Straight<br>Leads  | Taping |
| (V)  | (μF)           | (mm)      | (mm)   |   |                            |                           | (mm)         | Straight<br>(mm) | Taping<br>*B<br>(mm) | Taping<br>*i<br>(mm) |               | (pcs)              | (pcs)  |
| 350  | 22             | 12.5      | 20     | 130   | 0.20                       | 2000                      | 0.6          | 5.0              | 5.0                  |                      | ECA2VHG220( ) | 200                | 500    |
|      | 33             | 16        | 25     | 195   | 0.20                       | 2000                      | 0.8          | 7.5              | 7.5                  |                      | ECA2VHG330( ) | 100                | 250    |
|      | 47             | 16        | 25     | 230   | 0.20                       | 2000                      | 0.8          | 7.5              | 7.5                  |                      | ECA2VHG470( ) | 100                | 250    |
|      | 100            | 18        | 31.5   | 375   | 0.20                       | 2000                      | 0.8          | 7.5              |                      |                      | ECA2VHG101    | 50                 |        |
| 400  | 1              | 6.3       | 11.2   | 18  | 0.24                       | 2000                      | 0.5          | 2.5              | 5.0                  | 2.5                  | ECA2GHG010( ) | 200                | 2000   |
|      | 2.2            | 8         | 11.5   | 30  | 0.24                       | 2000                      | 0.6          | 3.5              | 5.0                  |                      | ECA2GHG2R2( ) | 200                | 1000   |
|      | 3.3            | 10        | 12.5   | 40  | 0.24                       | 2000                      | 0.6          | 5.0              | 5.0                  |                      | ECA2GHG3R3( ) | 200                | 500    |
|      | 4.7            | 10        | 16     | 50  | 0.24                       | 2000                      | 0.6          | 5.0              | 5.0                  |                      | ECA2GHG4R7( ) | 200                | 500    |
|      | 10             | 10        | 20     | 80  | 0.24                       | 2000                      | 0.6          | 5.0              | 5.0                  |                      | ECA2GHG100( ) | 200                | 500    |
|      | 22             | 12.5      | 25     | 145   | 0.24                       | 2000                      | 0.6          | 5.0              | 5.0                  |                      | ECA2GHG220( ) | 200                | 500    |
|      | 33             | 16        | 25     | 195   | 0.24                       | 2000                      | 0.8          | 7.5              | 7.5                  |                      | ECA2GHG330( ) | 100                | 250    |
| 450  | 47             | 16        | 31.5   | 250   | 0.24                       | 2000                      | 0.8          | 7.5              |                      |                      | ECA2GHG470    | 100                |        |
|      | 1              | 8         | 11.5   | 18  | 0.24                       | 2000                      | 0.6          | 3.5              | 5.0                  |                      | ECA2WHG010( ) | 200                | 1000   |
|      | 2.2            | 10        | 12.5   | 29  | 0.24                       | 2000                      | 0.6          | 5.0              | 5.0                  |                      | ECA2WHG2R2( ) | 200                | 500    |
|      | 3.3            | 10        | 16     | 41  | 0.24                       | 2000                      | 0.6          | 5.0              | 5.0                  |                      | ECA2WHG3R3( ) | 200                | 500    |
|      | 4.7            | 10        | 20     | 49  | 0.24                       | 2000                      | 0.6          | 5.0              | 5.0                  |                      | ECA2WHG4R7( ) | 200                | 500    |
|      | 10             | 12.5      | 20     | 75  | 0.24                       | 2000                      | 0.6          | 5.0              | 5.0                  |                      | ECA2WHG100( ) | 200                | 500    |
|      | 22             | 16        | 25     | 115   | 0.24                       | 2000                      | 0.8          | 7.5              | 7.5                  |                      | ECA2WHG220( ) | 100                | 250    |
|      | 33             | 16        | 31.5   | 155   | 0.24                       | 2000                      | 0.8          | 7.5              |                      |                      | ECA2WHG330    | 100                |        |

When requesting taped product, please put the letter "B" or "i" between the "( )". Lead wire pitch B=5mm, 7.5mm. i=2.5mm.

# Mouser Electronics

Authorized Distributor

Click to View Pricing, Inventory, Delivery & Lifecycle Information:

## Panasonic:

[ECA-1CHG100](#) [ECA-1CHG100B](#) [ECA-1EHG470C](#) [ECA-1EHG472U](#) [ECA-1HEN100](#) [ECA-1HEN100B](#) [ECA-1HEN100I](#) [ECA-1HHG101C](#) [ECA-1HHG221E](#) [ECA-1HHG471E](#) [ECA-1HHG4R7C](#) [ECA-1JHG102E](#) [ECA-1JHG221E](#) [ECA-1JHG331E](#) [ECA-1JHG470E](#) [ECA-2AHG100C](#) [ECA-1HM0R1B](#) [ECA-1HM0R1i](#)



Компания «ЭлектроПласт» предлагает заключение долгосрочных отношений при поставках импортных электронных компонентов на взаимовыгодных условиях!

Наши преимущества:

- Оперативные поставки широкого спектра электронных компонентов отечественного и импортного производства напрямую от производителей и с крупнейших мировых складов;
- Поставка более 17-ти миллионов наименований электронных компонентов;
- Поставка сложных, дефицитных, либо снятых с производства позиций;
- Оперативные сроки поставки под заказ (от 5 рабочих дней);
- Экспресс доставка в любую точку России;
- Техническая поддержка проекта, помощь в подборе аналогов, поставка прототипов;
- Система менеджмента качества сертифицирована по Международному стандарту ISO 9001;
- Лицензия ФСБ на осуществление работ с использованием сведений, составляющих государственную тайну;
- Поставка специализированных компонентов (Xilinx, Altera, Analog Devices, Intersil, Interpoint, Microsemi, Aeroflex, Peregrine, Syfer, Eurofarad, Texas Instrument, Miteq, Cobham, E2V, MA-COM, Hittite, Mini-Circuits, General Dynamics и др.);

Помимо этого, одним из направлений компании «ЭлектроПласт» является направление «Источники питания». Мы предлагаем Вам помощь Конструкторского отдела:

- Подбор оптимального решения, техническое обоснование при выборе компонента;
- Подбор аналогов;
- Консультации по применению компонента;
- Поставка образцов и прототипов;
- Техническая поддержка проекта;
- Защита от снятия компонента с производства.



#### Как с нами связаться

**Телефон:** 8 (812) 309 58 32 (многоканальный)

**Факс:** 8 (812) 320-02-42

**Электронная почта:** [org@eplast1.ru](mailto:org@eplast1.ru)

**Адрес:** 198099, г. Санкт-Петербург, ул. Калинина, дом 2, корпус 4, литера А.