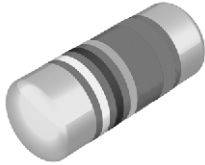


## High Pulse Load MELF Resistors



CMA 0204 specialty MELF resistors with advanced pulse load capability are the perfect choice for the protection of circuitry with signal or mains input lines from surge pulses. The resistors are also suitable for circuits exposed to high levels of electromagnetic interference or electrostatic discharge. The applications are in all fields of automotive, telecommunication, industrial and medical equipment.

### FEATURES

- Special carbon film technology
- Up to 4 kV single pulse capability
- Up to 70 W continuous pulse load
- ESD capability: 6 kV, human body model
- Compatible with lead (Pb)-free and lead containing soldering processes
- Compliant to RoHS directive 2002/95/EC



**RoHS**  
COMPLIANT  
**GREEN**  
(5-2009)\*\*

### APPLICATIONS

- Automotive
- Telecommunication
- Industrial
- Medical equipment

### METRIC SIZES

|      |          |
|------|----------|
| DIN  | 0204     |
| CECC | RC 3715M |

### TECHNICAL SPECIFICATIONS

| DESCRIPTION  | CMA 0204                      |                  |            |
|--|-------------------------------|------------------|------------|
| Metric CECC size   | RC 3715M                      |                  |            |
| Resistance range   | 10 $\Omega$ to 100 k $\Omega$ |                  |            |
| Resistance tolerance   | $\pm 2\%$                     |                  |            |
| Temperature coefficient  | See TCR graph                 |                  |            |
| Operation mode   | Standard                      | Power            |            |
| Climatic category (LCT/UCT/days)   | 55/125/56                     | 55/155/56        |            |
| Rated dissipation, $P_{70}$ <sup>(1)</sup>                                   | 0.25 W                        | 0.4 W            |            |
| Operating voltage, $U_{max}$ . AC/DC   | 200 V                         |                  |            |
| Film temperature <sup>(2)</sup>  | 125 $^{\circ}$ C              | 155 $^{\circ}$ C |            |
| Max. resistance change at $P_{70}$ for resistance range, $\Delta R/R$ after: | 10 $\Omega$ to 100 k $\Omega$ |                  |            |
|  | 1000 h                        | $\leq 1\%$       | $\leq 2\%$ |
|  | 8000 h                        | $\leq 2\%$       | $\leq 4\%$ |
| Permissible voltage against ambient (insulation):                            | 1 min; $U_{ins}$              | 300 V            |            |
|  | Continuous                    | 75 V             |            |
| Failure rate: FIT <sub>observed</sub>  | $\leq 0.1 \times 10^{-9}/h$   |                  |            |

### Notes

- These resistors do not feature a limited lifetime when operated within the permissible limits. However, resistance value drift increasing over operating time may result in exceeding a limit acceptable to the specific application, thereby establishing a functional lifetime.

<sup>(1)</sup> The power dissipation on the resistor generates a temperature rise against the local ambient, depending on the heatflow support of the printed-circuit board (thermal resistance). The rated dissipation applies only if the permitted film temperature is not exceeded. Furthermore, a high level of ambient temperature or of power dissipation may raise the temperature of the solder joint, hence special solder alloys or board materials may be required to maintain the reliability of the assembly.

<sup>(2)</sup> Film temperatures above the specified range may be permissible, e.g. 175  $^{\circ}$ C. Please contact the factory for details.

\*\* Please see document "Vishay Material Category Policy": [www.vishay.com/doc?99902](http://www.vishay.com/doc?99902)

**DIMENSIONS**



| DIMENSIONS AND MASS |               |               |                          |                     |           |           |
|---------------------|---------------|---------------|--------------------------|---------------------|-----------|-----------|
| TYPE                | L (mm)        | D (mm)        | L <sub>1</sub> min. (mm) | D <sub>1</sub> (mm) | K (mm)    | MASS (mg) |
| CMA 0204            | 3.6 + 0/- 0.2 | 1.4 + 0/- 0.1 | 1.8                      | D + 0/- 0.15        | 0.8 ± 0.1 | 19        |

**Note**

- Color code marking is applied according to IEC 60062 <sup>(3)</sup> in four bands (E24 series). Each color band appears as a single solid line, voids are permissible if at least 2/3 of the band is visible from each radial angle of view. The last color band for tolerance is approximately 50 % wider than the other bands. An interrupted band between the 2<sup>nd</sup> and 3<sup>rd</sup> full band identifies the special carbon film.

**PATTERN STYLES FOR MELF RESISTORS**



| RECOMMENDED SOLDER PAD DIMENSIONS |                |        |        |        |                  |        |        |        |
|-----------------------------------|----------------|--------|--------|--------|------------------|--------|--------|--------|
| TYPE                              | WAVE SOLDERING |        |        |        | REFLOW SOLDERING |        |        |        |
|                                   | G (mm)         | Y (mm) | X (mm) | Z (mm) | G (mm)           | Y (mm) | X (mm) | Z (mm) |
| CMA 0204                          | 1.5            | 1.5    | 1.8    | 4.5    | 1.7              | 1.2    | 1.6    | 4.1    |

**Note**

- The given solder pad dimensions reflect the considerations for board design and assembly as outlined e.g. in standards IEC 61188-5-x, or in publication IPC-7351. They do not guarantee any supposed thermal properties, however, they will be found adequate for most general applications.



| PART NUMBER AND PRODUCT DESCRIPTION      |                                  |   |                          |   |  |   |                              |                        |                       |   |  |   |   |   |   |   |   |
|--|----------------------------------|---|--------------------------|---|--|---|------------------------------|------------------------|-----------------------|---|--|---|---|---|---|---|---|
| Part Number: CMA02040X4701GB300          |                                  |   |                          |   |  |   |                              |                        |                       |   |  |   |   |   |   |   |   |
| C  | M                                | A | 0                        | 2 | 0  | 4 | 0                            | X                      | 4                     | 7 | 0  | 1 | G | B | 3 | 0 | 0 |
| MODEL/SIZE<br><b>CMA0204</b>             | SPECIAL CHARACTER<br>0 = Neutral |   | TCR<br>X = No indication |   | VALUE<br>3 digit value<br>1 digit multiplier<br><b>Multiplier</b><br>9 = *10 <sup>-1</sup><br>0 = *10 <sup>0</sup><br>1 = *10 <sup>1</sup><br>2 = *10 <sup>2</sup><br>3 = *10 <sup>3</sup> |   |                              | TOLERANCE<br>G = ± 2 % | PACKAGING<br>B3<br>B0 |   | SPECIAL<br>Up to 2 digits<br>00 = Standard |   |   |   |   |   |   |
| Product Description: CMA 0204 2 % BL 4K7 |                                  |   |                          |   |  |   |                              |                        |                       |   |  |   |   |   |   |   |   |
| CMA                                      | 0204                             |   | 2 %                      |   | BL   |   | 4K7                          |                        |                       |   |  |   |   |   |   |   |   |
| MODEL                                    | SIZE                             |   | TOLERANCE                |   | PACKAGING  |   | RESISTANCE VALUE             |                        |                       |   |  |   |   |   |   |   |   |
| CMA                                      | 0204                             |   | ± 2 %                    |   | BL<br>B0   |   | 100R = 100 Ω<br>4K7 = 4.7 kΩ |                        |                       |   |  |   |   |   |   |   |   |

**Note**

- Products can be ordered using either the PART NUMBER or the PRODUCT DESCRIPTION.

| PACKAGING |  |             |         |
|-----------|--|-------------|---------|
| MODEL     | BLISTER TAPE ON REEL<br>ACC. IEC 60286-3 |             |         |
|           | DIAMETER                                 | PIECES/REEL | CODE    |
| CMA 0204  | 180 mm/7"                                | 3000        | B3 = BL |
|           | 330 mm/13"                               | 10 000      | B0      |

**DESCRIPTION**

Production of the CMA 0204 specialty MELF resistors with advanced pulse load capability is strictly controlled and follows an extensive set of instructions established for reproducibility. A homogeneous and dense carbon film is deposited on a high grade ceramic body (85 % Al<sub>2</sub>O<sub>3</sub>). Nickel plated steel termination caps are firmly pressed on the coated rods. A special laser is used to achieve the target value by smoothly cutting a helical groove in the resistive layer without damaging the ceramics. The resistors are covered by protective coating designed for electrical, mechanical and climatic protection. The terminations receive a final pure tin on nickel plating. Four color code rings designate the resistance value and tolerance in accordance with **IEC 60 062** <sup>(3)</sup>.

The result of the determined production is verified by an extensive testing procedure performed on 100 % of the individual resistors. Only accepted products are laid directly into the blister tape in accordance with **IEC 60 286-3** <sup>(3)</sup>.

**ASSEMBLY**

The resistors are suitable for processing on automatic SMD assembly systems. They are suitable for automatic soldering using wave, reflow or vapour phase as shown in **IEC 61760-1** <sup>(3)</sup>. Excellent solderability is proven, even after extended storage in excess of 10 years. The encapsulation is resistant to all cleaning solvents commonly used in the electronics industry, including alcohols, esters and aqueous solutions. The resistors are completely lead (Pb)-free, the pure tin plating provides compatibility with lead (Pb)-free soldering processes. The immunity of the plating against tin whisker growth has been proven under extensive testing.

All products comply with the **GADSL** <sup>(1)</sup> and the **CEFIC-EECA-EICTA** <sup>(2)</sup> list of legal restrictions on hazardous substances. This includes full compliance with the following directives:

- 2000/53/EC End of Vehicle life Directive (ELV) and Annex II (ELV II)
- 2002/95/EC Restriction of the use of Hazardous Substances Directive (RoHS)
- 2002/96/EC Waste Electrical and Electronic Equipment Directive (WEEE)

**Notes**

<sup>(1)</sup> Global Automotive Declarable Substance List, see [www.gadsl.org](http://www.gadsl.org).

<sup>(2)</sup> CEFIC (European Chemical Industry Council), EECA (European Electronic Component Manufacturers Association), EICTA (European trade organisation representing the information and communications technology and consumer electronics), see [www.eicta.org/index.php?id=995](http://www.eicta.org/index.php?id=995)  
→ issues → environment policy → chemicals → chemicals for electronics.

<sup>(3)</sup> The quoted IEC standards are also released as EN standards with the same number and identical contents.

**FUNCTIONAL PERFORMANCE**



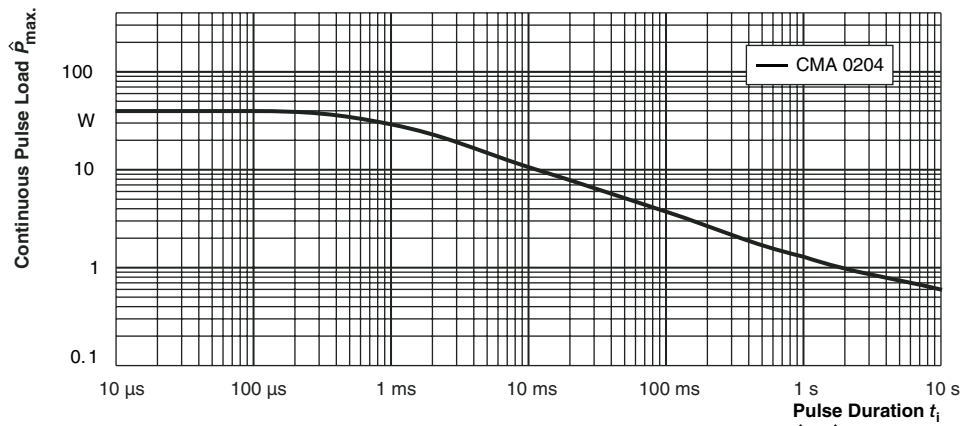
**Derating - Standard Operation**



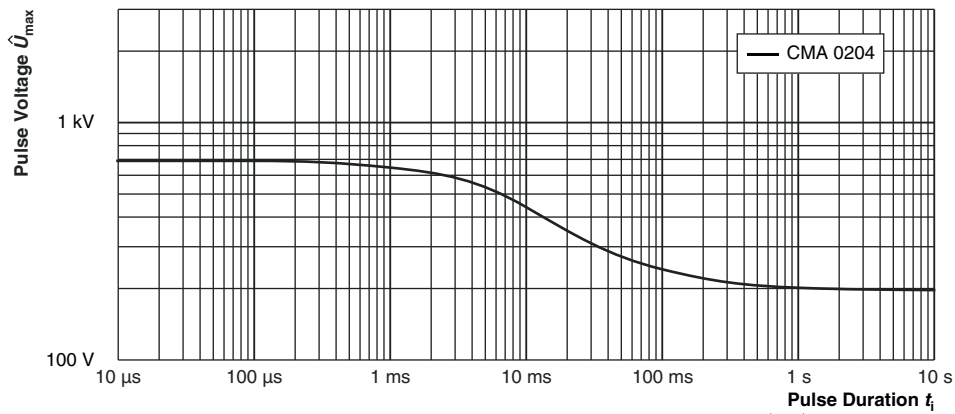
**Derating - Standard Operation**



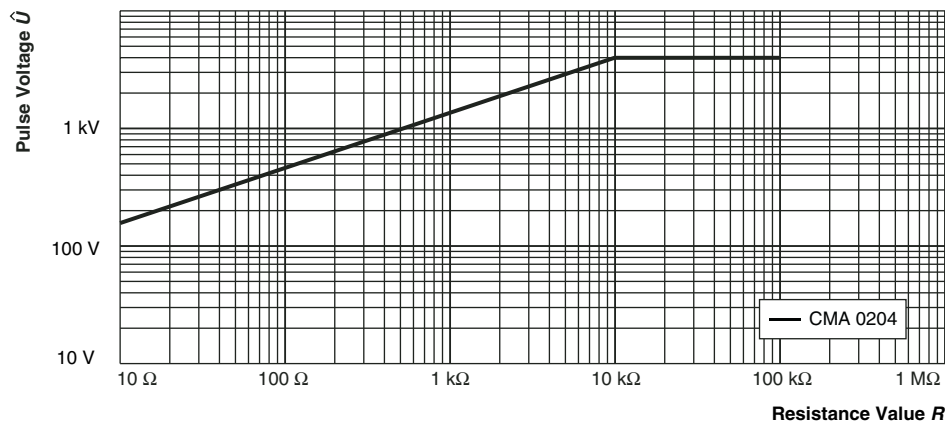
**Single Pulse** Maximum pulse load, single pulse; applicable if  $\bar{P} \rightarrow 0$  and  $n \leq 1000$  and  $\hat{U} \leq \hat{U}_{max}$ ; for permissible resistance change equivalent to 8000 h operation

**FUNCTIONAL PERFORMANCE**


Maximum pulse load, continuous pulses; applicable if  $\bar{P} \leq P(\vartheta_{amb})$  and  $\hat{U} \leq \hat{U}_{max}$ ; for permissible resistance change equivalent to 8000 h operation

**Continuous Pulses**


Maximum pulse voltage, single and continuous pulses; applicable if  $\hat{P} \leq \hat{P}_{max}$ ; for permissible resistance change equivalent to 8000 h operation

**Pulse Voltage**


Pulse load rating in accordance with IEC 60115-1, 4.27; 1,2  $\mu$ s/50  $\mu$ s; 5 pulses at 12 s intervals; for permissible resistance change 0.5 %

**1.2/50 Pulse**

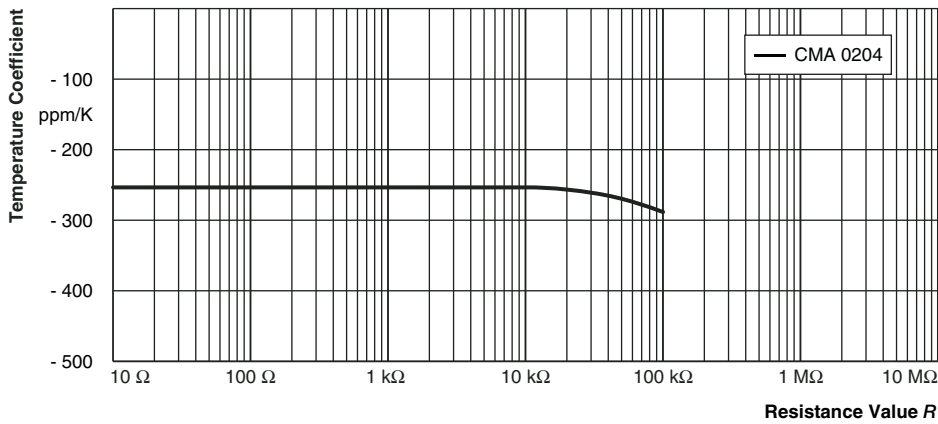


**FUNCTIONAL PERFORMANCE**



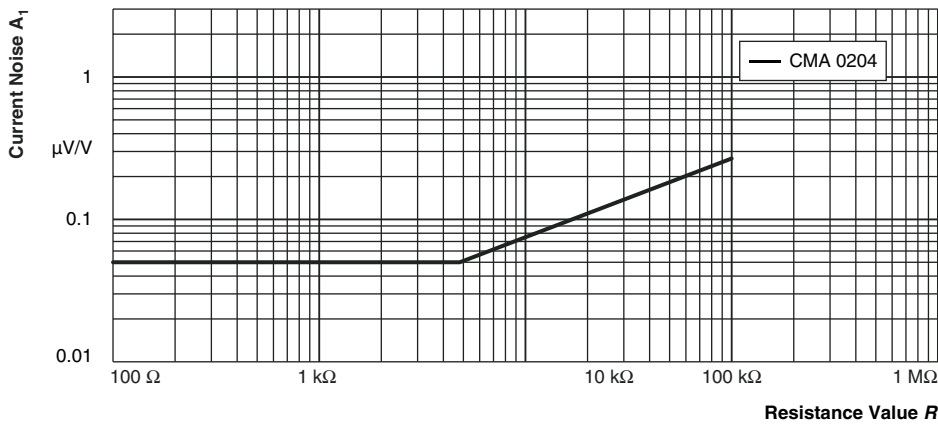
Pulse load rating in accordance with IEC 60115-1, 4.27; 10  $\mu$ s/700  $\mu$ s; 10 pulses at 1 minute intervals; for permissible resistance change 0.5 %

**10/700 Pulse**



Temperature coefficient of resistance

**Temperature Coefficient (TCR) (Typical Curve)**



In accordance with IEC 60 195

**Current Noise - A<sub>1</sub>**

**TESTS AND REQUIREMENTS**

Essentially all tests are carried out in accordance with the following specifications:

EN 60115-1, generic specification

EN 140400, sectional specification

EN 140401-803, detail specification

The Test Procedures and Requirements table contains the applicable tests selected from the documents listed above.

The tests are carried out in accordance with IEC 60068 (1) and under standard atmospheric conditions in accordance with IEC 60068-1, 5.3 (1). Climatic category LCT/UCT/56 (rated temperature range: Lower category temperature,

upper category temperature; damp heat, long term, 56 days) is valid.

Unless otherwise specified the following values apply:

Temperature: 15 °C to 35 °C

Relative humidity: 45 % to 75 %

Air pressure: 86 kPa to 106 kPa (860 mbar to 1060 mbar).

The components are mounted for testing on printed-circuit boards in accordance with EN 140400, 2.3.3, unless otherwise specified.

The requirements stated in the Test Procedures and Requirements table are based on the required tests and permitted limits of EN 140401-803.

| TEST PROCEDURES AND REQUIREMENTS |                             |  |  |  |
|----------------------------------|-----------------------------|--|--|--|
| EN 60115-1 CLAUSE                | IEC 60068-2 (1) TEST METHOD | TEST   | PROCEDURE  | REQUIREMENTS PERMISSIBLE CHANGE ( $\Delta R$ )               |
|                                  |                             |  | Stability for product types:   |  |
|                                  |                             |  | <b>CMA 0204</b>  | 10 $\Omega$ to 100 k $\Omega$                                |
| 4.5                              | -                           | Resistance                                   | -  | $\pm 2 \% R$   |
| 4.8.4.2                          | -                           | Temperature coefficient                      | At (20/- 55/20) °C and (20/125/20) °C  | See Temperature Coefficient graph                            |
| 4.25.1                           | -                           | Endurance at 70 °C: standard operation mode  | $U = \sqrt{P_{70} \times R} \leq U_{max.}$ ;<br>1.5 h on; 0.5 h off;<br>70 °C; 1000 h<br>70 °C; 8000 h | $\pm (1 \% R + 0.05 \Omega)$<br>$\pm (2 \% R + 0.05 \Omega)$ |
| 4.25.1                           | -                           | Endurance at 70 °C: power operation mode     | $U = \sqrt{P_{70} \times R} \leq U_{max.}$ ;<br>1.5 h on; 0.5 h off;<br>70 °C; 1000 h<br>70 °C; 8000 h | $\pm (2 \% R + 0.05 \Omega)$<br>$\pm (4 \% R + 0.05 \Omega)$ |
| 4.25.3                           | -                           | Endurance at upper category temperature      | 125 °C; 1000 h<br>155 °C; 1000 h   | $\pm (2 \% R + 0.05 \Omega)$<br>$\pm (4 \% R + 0.05 \Omega)$ |
| 4.24                             | 78 (Cab)                    | Damp heat, steady state                      | (40 $\pm$ 2) °C; 56 days; (93 $\pm$ 3) % RH  | $\pm (1 \% R + 0.1 \Omega)$                                  |
| 4.23                             |                             | Climatic sequence:                           |  |  |
| 4.23.2                           | 2 (Ba)                      | dry heat                                     | UCT; 16 h  |  |
| 4.23.3                           | 30 (Db)                     | damp heat, cyclic                            | 55 °C; 24 h; $\geq 90 \% RH$ ; 1 cycle   |  |
| 4.23.4                           | 1 (Aa)                      | cold   | LCT; 2 h   |  |
| 4.23.5                           | 13 (M)                      | low air pressure                             | 8.5 kPa; 2 h; (25 $\pm$ 10) °C   |  |
| 4.23.6                           | 30 (Db)                     | damp heat, cyclic                            | 55 °C; 24 h; $\geq 90 \% RH$ ; 5 cycles  |  |
| 4.23.7                           | -                           | DC load                                      | $U = \sqrt{P_{70} \times R} \leq U_{max.}$ ; 1 min<br>LCT = - 55 °C; UCT = 155 °C                      | $\pm (1 \% R + 0.1 \Omega)$                                  |
| -                                | 1 (Aa)                      | Cold   | - 55 °C; 2 h   | $\pm (0.5 \% R + 0.1 \Omega)$                                |
| 4.19                             | 14 (Na)                     | Rapid change of temperature                  | 30 min at - 55 °C;<br>30 min at + 125 °C; 5 cycles   | $\pm (0.5 \% R + 0.1 \Omega)$                                |
| 4.13                             | -                           | Short time overload; standard operation mode | $U = 2.5 \times \sqrt{P_{70} \times R} \leq 2 \times U_{max.}$ ; 5 s                                   | $\pm (0.25 \% R + 0.1 \Omega)$                               |
|                                  |                             | Short time overload; power operation mode    | $U = 2.5 \times \sqrt{P_{70} \times R} \leq 2 \times U_{max.}$ ; 5 s                                   | $\pm (0.25 \% R + 0.1 \Omega)$                               |
| 4.40                             | -                           | Electrostatic discharge (human body model)   | IEC 61340-3-1 (1);<br>3 pos. + 3 neg. discharges<br>CMA 0204: 6 kV                                     | $\pm (0.5 \% R + 50 m\Omega)$                                |



| TEST PROCEDURES AND REQUIREMENTS |                             |                               |  |  |
|----------------------------------|-----------------------------|-------------------------------|--|--|
| EN 60115-1 CLAUSE                | IEC 60068-2 (1) TEST METHOD | TEST                          | PROCEDURE  | REQUIREMENTS PERMISSIBLE CHANGE ( $\Delta R$ )         |
|                                  |                             |                               | Stability for product types:   |  |
|                                  |                             |                               | <b>CMA 0204</b>  | 10 $\Omega$ to 100 k $\Omega$                          |
| 4.29                             | 45 (XA)                     | Component solvent resistance  | Isopropyl alcohol; 50 °C; method 2   | No visible damage                                      |
| 4.30                             | 45 (XA)                     | Solvent resistance of marking | Isopropyl alcohol; 50 °C; method 1, toothbrush   | Marking legible; no visible damage                     |
| 4.17.2                           | 58 (Td)                     | Solderability                 | Solder bath method; SnPb40; non-activated flux; (215 $\pm$ 3) °C; (3 $\pm$ 0.3) s                | Good tinning ( $\geq$ 95 % covered); no visible damage |
|                                  |                             |                               | Solder bath method; SnAg3Cu0.5 or SnAg3.5; non-activated flux; (235 $\pm$ 3) °C; (2 $\pm$ 0.2) s | Good tinning ( $\geq$ 95 % covered); no visible damage |
| 4.18.2                           | 58 (Td)                     | Resistance to soldering heat  | Solder bath method ; (260 $\pm$ 5) °C; (10 $\pm$ 1) s  | $\pm$ (0.5 % $R$ + 0.1 $\Omega$ )                      |
| 4.32                             | 21 (Ue <sub>3</sub> )       | Shear (adhesion)              | 45 N   | No visible damage                                      |
| 4.7                              | -                           | Voltage proof                 | $U_{RMS} = U_{ins}$ ; 60 s   | No flashover or breakdown                              |
| 4.35                             | -                           | Flammability                  | IEC 60 695-11-5 (1), needle flame test; 10 s   | No burning after 30 s                                  |

**Note**

(1) The quoted IEC standards are also released as EN standards with the same number and identical contents.

**HISTORICAL 12NC INFORMATION**

- The resistors have a 12-digit numeric code starting with 2312.
- The subsequent 4 digits indicate the resistor type, specification and packaging; see the 12NC table.
- The remaining 4 digits indicate the resistance value:
  - The first 3 digits indicate the resistance value.
  - The last digit indicates the resistance decade in accordance with the 12NC Indicating Resistance Decade table.

**Last Digit of 12NC Indicating Resistance Decade**

| RESISTANCE DECADE                | LAST DIGIT |
|----------------------------------|------------|
| 10 $\Omega$ to 99.9 $\Omega$     | 9          |
| 100 $\Omega$ to 999 $\Omega$     | 1          |
| 1 k $\Omega$ to 9.99 k $\Omega$  | 2          |
| 10 k $\Omega$ to 99.9 k $\Omega$ | 3          |
| 100 k $\Omega$ to 999 k $\Omega$ | 4          |

**Historical 12NC Example**

The 12NC of a CMA 0204 resistor, value 47 k $\Omega$  with  $\pm$  2 % tolerance, supplied in blister tape of 3000 units per reel is: 2312 159 24703.

| HISTORICAL 12NC - Resistor type and packaging |           |                           |                    |
|---|-----------|---------------------------|--------------------|
| DESCRIPTION                                   |           | ORDERING CODE 2312 ... .. |                    |
|   |           | BLISTER TAPE ON REEL      |                    |
| TYPE  | TOL.      | BL<br>3000 UNITS          | B0<br>10 000 UNITS |
| CMA 0204                                      | $\pm$ 2 % | 159 2....                 | 149 2....          |



## Disclaimer

ALL PRODUCT, PRODUCT SPECIFICATIONS AND DATA ARE SUBJECT TO CHANGE WITHOUT NOTICE TO IMPROVE RELIABILITY, FUNCTION OR DESIGN OR OTHERWISE.

Vishay Intertechnology, Inc., its affiliates, agents, and employees, and all persons acting on its or their behalf (collectively, "Vishay"), disclaim any and all liability for any errors, inaccuracies or incompleteness contained in any datasheet or in any other disclosure relating to any product.

Vishay makes no warranty, representation or guarantee regarding the suitability of the products for any particular purpose or the continuing production of any product. To the maximum extent permitted by applicable law, Vishay disclaims (i) any and all liability arising out of the application or use of any product, (ii) any and all liability, including without limitation special, consequential or incidental damages, and (iii) any and all implied warranties, including warranties of fitness for particular purpose, non-infringement and merchantability.

Statements regarding the suitability of products for certain types of applications are based on Vishay's knowledge of typical requirements that are often placed on Vishay products in generic applications. Such statements are not binding statements about the suitability of products for a particular application. It is the customer's responsibility to validate that a particular product with the properties described in the product specification is suitable for use in a particular application. Parameters provided in datasheets and/or specifications may vary in different applications and performance may vary over time. All operating parameters, including typical parameters, must be validated for each customer application by the customer's technical experts. Product specifications do not expand or otherwise modify Vishay's terms and conditions of purchase, including but not limited to the warranty expressed therein.

Except as expressly indicated in writing, Vishay products are not designed for use in medical, life-saving, or life-sustaining applications or for any other application in which the failure of the Vishay product could result in personal injury or death. Customers using or selling Vishay products not expressly indicated for use in such applications do so at their own risk. Please contact authorized Vishay personnel to obtain written terms and conditions regarding products designed for such applications.

No license, express or implied, by estoppel or otherwise, to any intellectual property rights is granted by this document or by any conduct of Vishay. Product names and markings noted herein may be trademarks of their respective owners.

## Material Category Policy

**Vishay Intertechnology, Inc. hereby certifies that all its products that are identified as RoHS-Compliant fulfill the definitions and restrictions defined under Directive 2011/65/EU of The European Parliament and of the Council of June 8, 2011 on the restriction of the use of certain hazardous substances in electrical and electronic equipment (EEE) - recast, unless otherwise specified as non-compliant.**

**Please note that some Vishay documentation may still make reference to RoHS Directive 2002/95/EC. We confirm that all the products identified as being compliant to Directive 2002/95/EC conform to Directive 2011/65/EU.**

**Vishay Intertechnology, Inc. hereby certifies that all its products that are identified as Halogen-Free follow Halogen-Free requirements as per JEDEC JS709A standards. Please note that some Vishay documentation may still make reference to the IEC 61249-2-21 definition. We confirm that all the products identified as being compliant to IEC 61249-2-21 conform to JEDEC JS709A standards.**



Компания «ЭлектроПласт» предлагает заключение долгосрочных отношений при поставках импортных электронных компонентов на взаимовыгодных условиях!

Наши преимущества:

- Оперативные поставки широкого спектра электронных компонентов отечественного и импортного производства напрямую от производителей и с крупнейших мировых складов;
- Поставка более 17-ти миллионов наименований электронных компонентов;
- Поставка сложных, дефицитных, либо снятых с производства позиций;
- Оперативные сроки поставки под заказ (от 5 рабочих дней);
- Экспресс доставка в любую точку России;
- Техническая поддержка проекта, помощь в подборе аналогов, поставка прототипов;
- Система менеджмента качества сертифицирована по Международному стандарту ISO 9001;
- Лицензия ФСБ на осуществление работ с использованием сведений, составляющих государственную тайну;
- Поставка специализированных компонентов (Xilinx, Altera, Analog Devices, Intersil, Interpoint, Microsemi, Aeroflex, Peregrine, Syfer, Eurofarad, Texas Instrument, Miteq, Cobham, E2V, MA-COM, Hittite, Mini-Circuits, General Dynamics и др.);

Помимо этого, одним из направлений компании «ЭлектроПласт» является направление «Источники питания». Мы предлагаем Вам помощь Конструкторского отдела:

- Подбор оптимального решения, техническое обоснование при выборе компонента;
- Подбор аналогов;
- Консультации по применению компонента;
- Поставка образцов и прототипов;
- Техническая поддержка проекта;
- Защита от снятия компонента с производства.



#### Как с нами связаться

**Телефон:** 8 (812) 309 58 32 (многоканальный)

**Факс:** 8 (812) 320-02-42

**Электронная почта:** [org@eplast1.ru](mailto:org@eplast1.ru)

**Адрес:** 198099, г. Санкт-Петербург, ул. Калинина, дом 2, корпус 4, литера А.