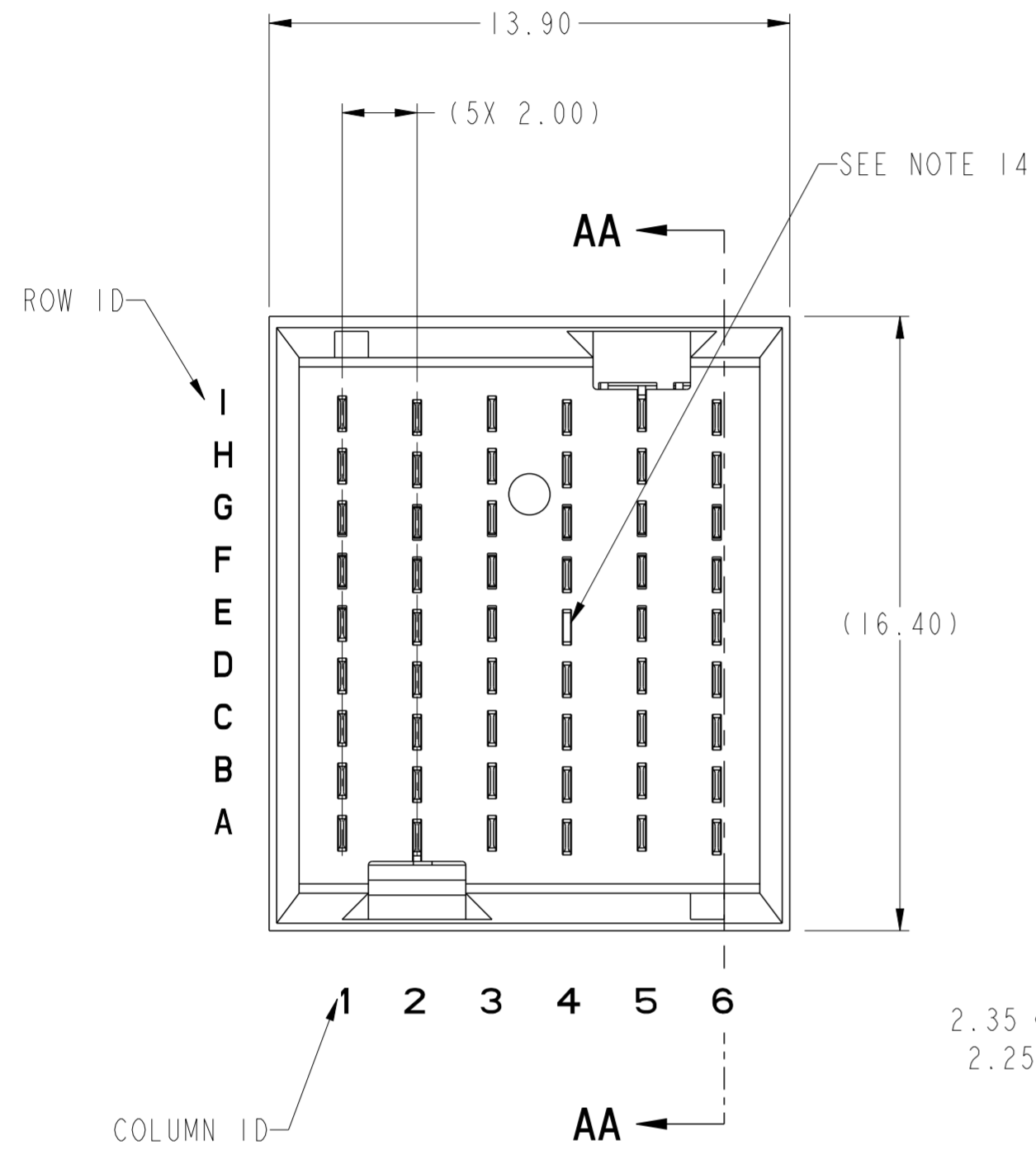
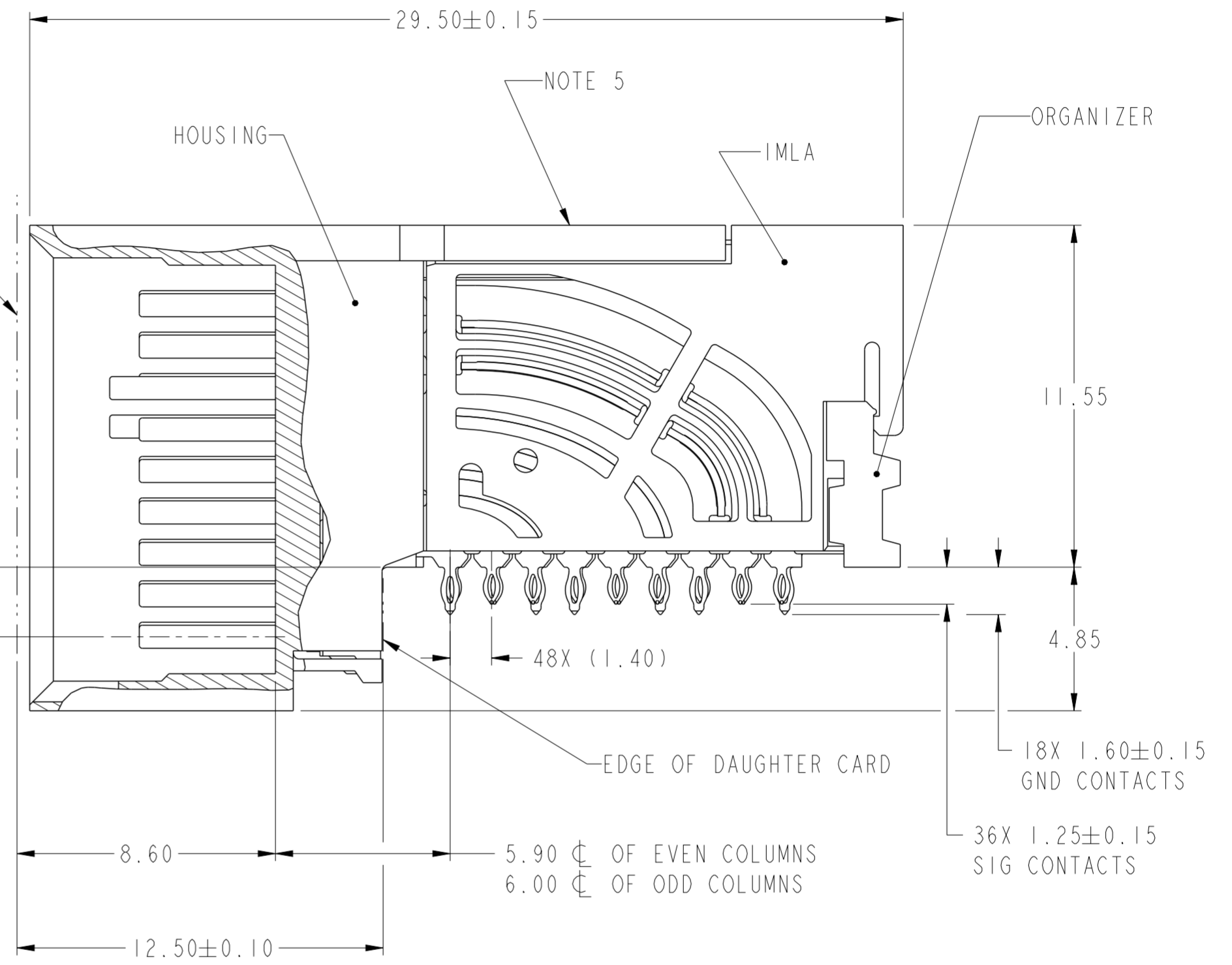


PRODUCT NUMBER
SEE SHEET 3



2.35 ϕ OF EVEN COLUMNS
2.25 ϕ OF ODD COLUMNS



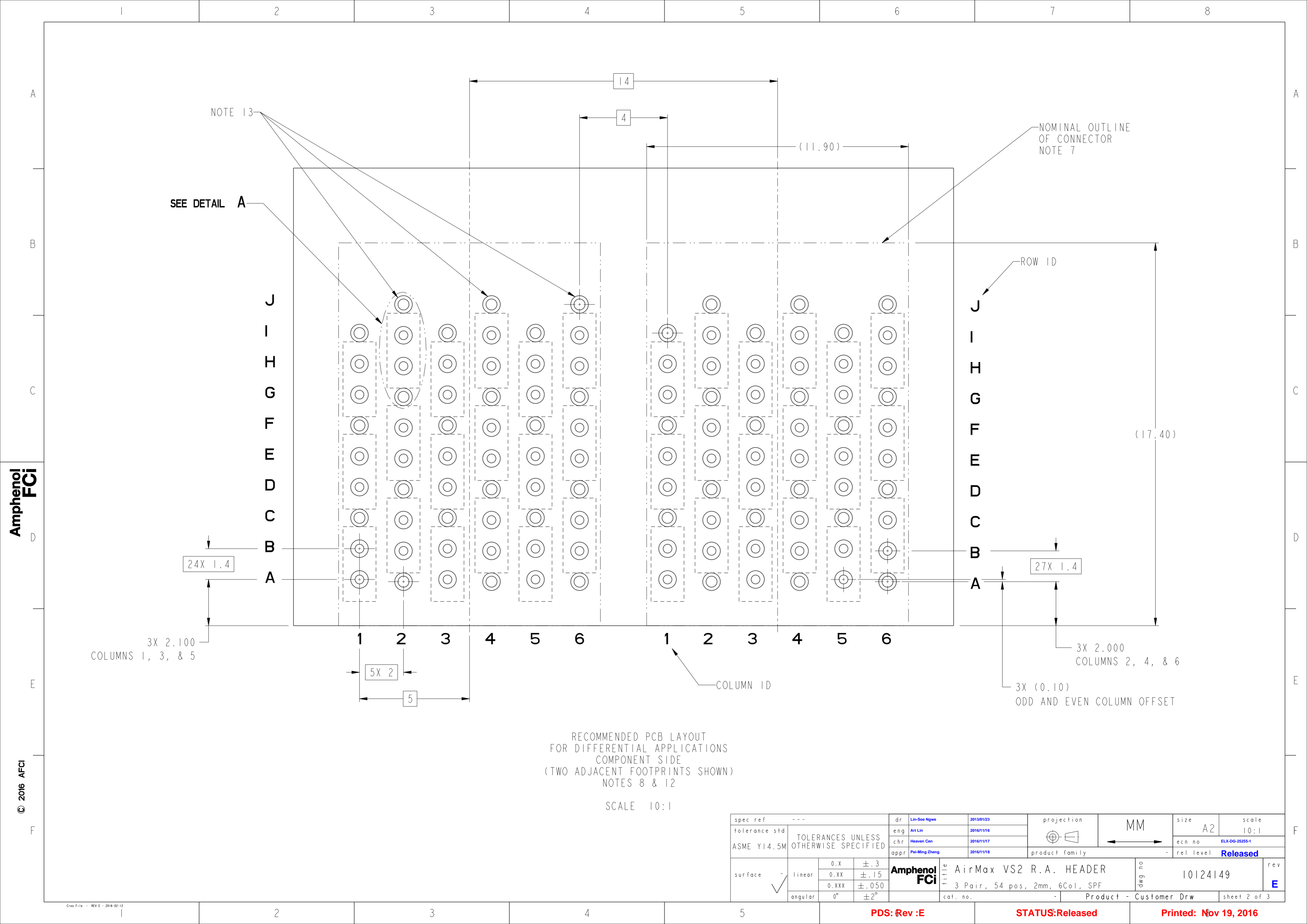
SECTION AA-AA

| | | | | | | | | | | |
|---------------------------------------|-------------|-------|----------------|------------|--------------------------------|----|----------------|------------------------|------------------------|--------------|
| spec ref | --- | dr | Lin-Soe Ngwe | 2013/01/23 | projection | MM | size | A2 | scale | 6:1 |
| tolerance std | ASME Y14.5M | eng | Art Lin | 2016/11/16 | | | ecn no | ELX-DG-25255-1 | rel level | Released |
| TOLERANCES UNLESS OTHERWISE SPECIFIED | | chr | Heaven Cen | 2016/11/17 | | | product family | AirMax VS2 | | |
| | | appr | Pai-Ming Zheng | 2016/11/18 | | | title | AirMax VS2 R.A. HEADER | | dwg no |
| surface | linear | 0.X | ±.3 | | 3 Pair, 54 pos, 2mm, 6Col, SPF | | cat. no. | - | Product - Customer Drw | sheet 1 of 3 |
| | | 0.XX | ±.15 | | | | | | | |
| | | 0.XXX | ±.050 | | | | | | | |
| | angular | 0° | ±2° | | | | | | | |

PDS: Rev :E

STATUS:Released

Printed: Nov 19, 2016



NOTE 13

SEE DETAIL A

NOMINAL OUTLINE OF CONNECTOR NOTE 7

ROW ID

COLUMN ID

24X 1.4

27X 1.4

3X 2.100 COLUMNS 1, 3, & 5

3X 2.000 COLUMNS 2, 4, & 6

5X 2

3X (0.10) ODD AND EVEN COLUMN OFFSET

RECOMMENDED PCB LAYOUT FOR DIFFERENTIAL APPLICATIONS COMPONENT SIDE (TWO ADJACENT FOOTPRINTS SHOWN) NOTES 8 & 12

SCALE 10:1

| | | | | | | | | | | | | | | | | |
|---------------------------------------|---|--------|----------------|------------|------------|------|----------------|----------------|---------|------|-----|--|---|--------------------------------------|---------------------------------|-------|
| spec ref | --- | dr | Lin-Soe Ngwe | 2013/01/23 | projection | MM | size | A2 | scale | 10:1 | | | | | | |
| tolerance std | ASME Y14.5M | eng | Art Lin | 2016/11/16 | | | ecn no | ELX-DG-25255-1 | | | | | | | | |
| TOLERANCES UNLESS OTHERWISE SPECIFIED | | chr | Heaven Cen | 2016/11/17 | | | rel level | Released | | | | | | | | |
| | | appr | Pai-Ming Zheng | 2016/11/18 | | | product family | | | | | | | | | |
| surface | <table border="1"> <tr> <td rowspan="3">linear</td> <td>0.X</td> <td>±.3</td> </tr> <tr> <td>0.XX</td> <td>±.15</td> </tr> <tr> <td>0.XXX</td> <td>±.050</td> </tr> <tr> <td>angular</td> <td>0°</td> <td>±2°</td> </tr> </table> | linear | 0.X | ±.3 | 0.XX | ±.15 | 0.XXX | ±.050 | angular | 0° | ±2° | | Amphenol FCI title AirMax VS2 R.A. HEADER 3 Pair, 54 pos, 2mm, 6Col, SPF | cat. no. - Product - Customer Drw | drg no 10124149 sheet 2 of 3 | rev E |
| linear | 0.X | | ±.3 | | | | | | | | | | | | | |
| | 0.XX | | ±.15 | | | | | | | | | | | | | |
| | 0.XXX | ±.050 | | | | | | | | | | | | | | |
| angular | 0° | ±2° | | | | | | | | | | | | | | |

Amphenol FCI

© 2016 APCI

| PRODUCT NUMBER | PRESS-FIT TAIL PLATING TYPE | SHORT DETECT CONTACT | REMARK |
|----------------|-----------------------------|----------------------|-----------------------------------|
| 10124149-101 | TIN/LEAD ALLOY OVER NICKEL | NO | 1-SIDE PLATING (CUSTOMER SPECIAL) |
| 10124149-101LF | TIN OVER NICKEL (LEAD FREE) | | |
| 10124149-111 | TIN/LEAD ALLOY OVER NICKEL | YES (SEE NOTE 14) | |
| 10124149-111LF | TIN OVER NICKEL (LEAD FREE) | | |
| 10124149-102 | TIN/LEAD ALLOY OVER NICKEL | NO | 2-SIDE PLATING |
| 10124149-102LF | TIN OVER NICKEL (LEAD FREE) | | |
| 10124149-112 | TIN/LEAD ALLOY OVER NICKEL | YES (SEE NOTE 14) | |
| 10124149-112LF | TIN OVER NICKEL (LEAD FREE) | | |

1 - CONNECTOR MATERIALS:
HOUSING: HIGH TEMP THERMOPLASTIC, NATURAL, UL94-V0
IMLA PLASTIC: HIGH TEMP THERMOPLASTIC, BLACK, UL94-V0
CONTACT: COPPER ALLOY
ORGANIZER: HIGH TEMP THERMOPLASTIC, NATURAL, UL94-V0

2 - CONTACT PLATING:
SEPARABLE INTERFACE:
PERFORMANCE-BASED PLATING, QUALIFIED TO MEET THE REQUIREMENTS OF FCI PRODUCT SPECIFICATION GS-12-0956 INCLUDING TELCORDIA GR-1217-CORE (NOVEMBER 1995) CENTRAL OFFICE TEST SEQUENCE

PRESS-FIT TAILS: SEE TABLE

3 - PRODUCT SPECIFICATION: GS-12-0956

4 - APPLICATION SPECIFICATION: GS-20-0305

5 - PRODUCT MARKING, (PROTOTYPE, PART NUMBER & LOT CODE), ON THIS SURFACE.

6 - POSITIONS "F" OF ODD NUMBERED COLUMNS AND POSITIONS "G" OF EVEN NUMBERED COLUMNS CORRESPOND TO EARLY MATE HEADER PINS.

7 - CONNECTOR OUTLINE MAY BE SCREEN PRINTED ONTO CUSTOMER PCB TO BE USED AS A GUIDE FOR CONNECTOR PLACEMENT.

8 - REFER TO CUSTOMER DRAWING 10104444 FOR INFORMATION ON PCB HOLE DIAMETERS AND PLATING OPTIONS

9 - LEAD FREE PRODUCT MEETS THE EUROPEAN UNION DIRECTIVES & OTHER COUNTRY REGULATIONS AS DESCRIBED IN GS-22-008

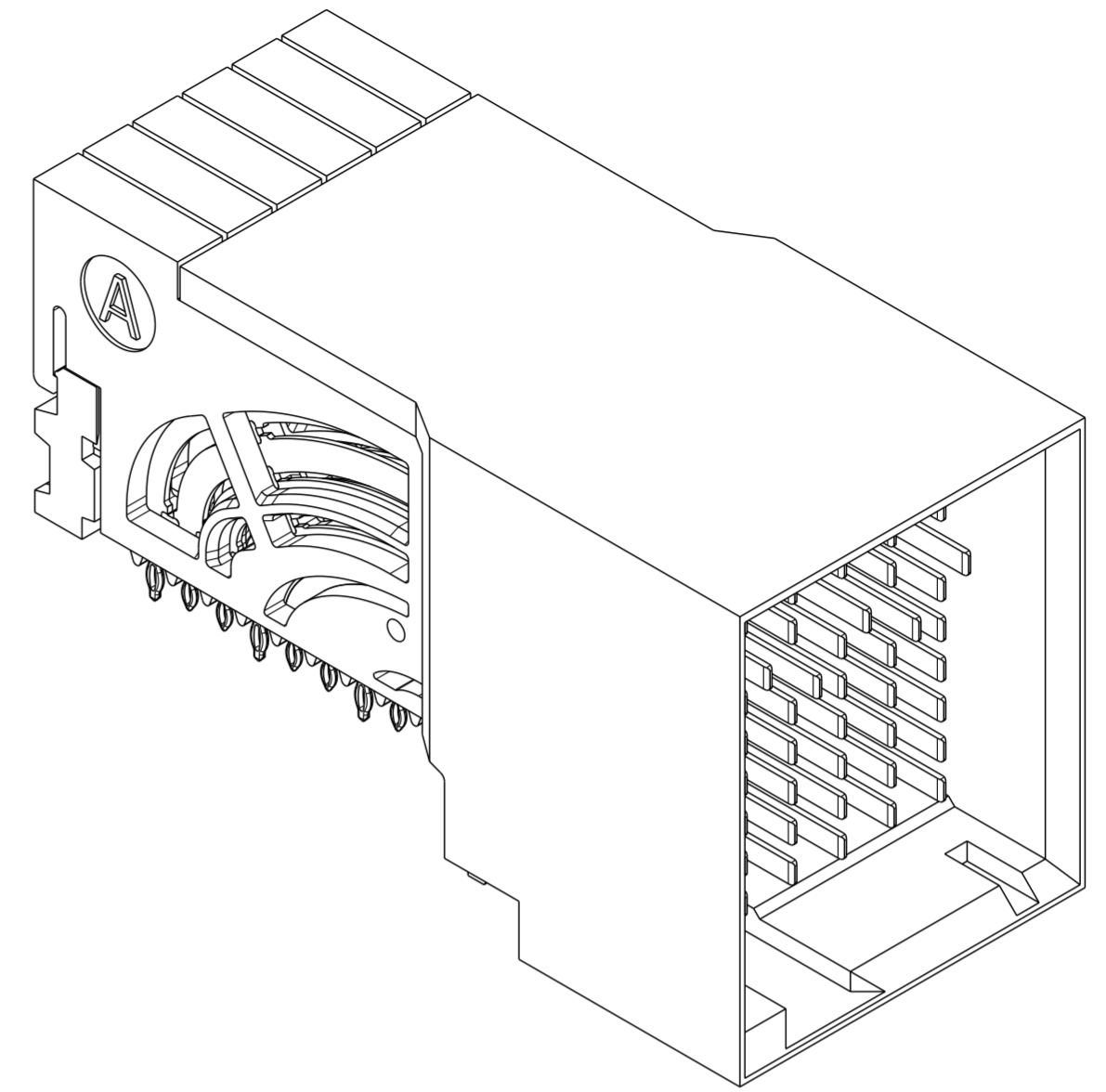
10 - A \triangle SYMBOL WILL BE NEXT TO ANY DIMENSION, VIEW, OR NOTE, WHICH HAS BEEN MODIFIED WITH THE CURRENT DRAWING REVISION.

11 - PACKAGING MEETS GS-14-920 LEAD FREE LABELING SPECIFICATION.

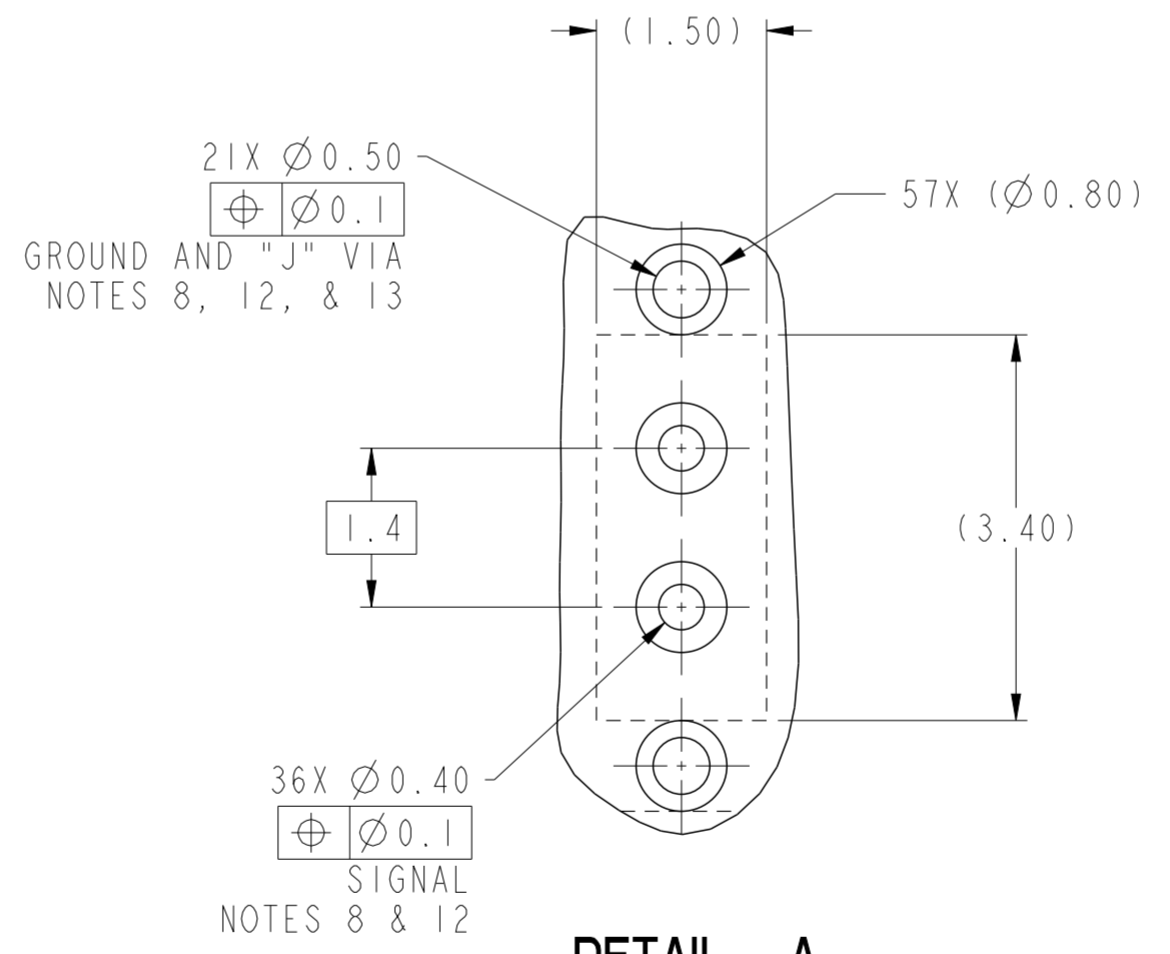
12 - GROUND CONTACTS (C, F, & I IN ODD COLUMNS AND A, D, & G IN EVEN COLUMNS) REQUIRE (ϕ 0.50) FINISHED HOLES. SIGNAL LOCATIONS REQUIRE (ϕ 0.40) FINISHED HOLES

13 - THESE OUTER VIAS (J) ARE OPTIONAL. WHILE NO CONNECTOR EONS ARE PRESSED INTO THESE HOLES WE RECOMMEND (ϕ 0.500) FINISHED HOLES AT THESE LOCATIONS TO PROVIDE GROUND SYMMETRY THROUGH THE PCB.

14 MATING PIN E4 HAS 0.5mm LESS NOMINAL WIPE THAN THE SHORTEST PIN.



10124149-101 OR -101LF



DETAIL A
SCALE 15:1

Amphenol FCI

© 2016 AFCI

| | | | | | | | | | | | | | | | | | | | | |
|---------------------------------------|---|--------------|--------------|--------------------------------|------------|------------------------|-----------|----------------|----------|------------|---------|----|----------|------|----------------|------------|----------------|--|--|--|
| spec ref | --- | dr | Lin-Soe Ngwe | 2013/01/23 | projection | MM | size | A2 | scale | 10:1 | | | | | | | | | | |
| tolerance std | ASME Y14.5M | eng | Art Lin | 2016/11/16 | | | ecn no | ELX-DG-25255-1 | | | | | | | | | | | | |
| TOLERANCES UNLESS OTHERWISE SPECIFIED | | chr | Heaven Cen | 2016/11/17 | | | rel level | Released | | | | | | | | | | | | |
| surface | <table border="1"> <tr> <td>linear</td> <td>0.X</td> <td>\pm.3</td> </tr> <tr> <td></td> <td>0.XX</td> <td>\pm.15</td> </tr> <tr> <td></td> <td>0.XXX</td> <td>\pm.050</td> </tr> <tr> <td>angular</td> <td>0°</td> <td>\pm2°</td> </tr> </table> | linear | 0.X | \pm .3 | | 0.XX | \pm .15 | | 0.XXX | \pm .050 | angular | 0° | \pm 2° | appr | Pai-Ming Zheng | 2016/11/18 | product family | | | |
| linear | 0.X | \pm .3 | | | | | | | | | | | | | | | | | | |
| | 0.XX | \pm .15 | | | | | | | | | | | | | | | | | | |
| | 0.XXX | \pm .050 | | | | | | | | | | | | | | | | | | |
| angular | 0° | \pm 2° | | | | | | | | | | | | | | | | | | |
| | | Amphenol FCI | | title | | AirMax VS2 R.A. HEADER | | dwg no | 10124149 | | | | | | | | | | | |
| | | | | 3 Pair, 54 pos, 2mm, 6Col, SPF | | | | rev | E | | | | | | | | | | | |
| | | | | cat. no. | | Product - Customer Drw | | sheet 3 of 3 | | | | | | | | | | | | |

PDS: Rev :E

STATUS:Released

Printed: Nov 19, 2016



Компания «ЭлектроПласт» предлагает заключение долгосрочных отношений при поставках импортных электронных компонентов на взаимовыгодных условиях!

Наши преимущества:

- Оперативные поставки широкого спектра электронных компонентов отечественного и импортного производства напрямую от производителей и с крупнейших мировых складов;
- Поставка более 17-ти миллионов наименований электронных компонентов;
- Поставка сложных, дефицитных, либо снятых с производства позиций;
- Оперативные сроки поставки под заказ (от 5 рабочих дней);
- Экспресс доставка в любую точку России;
- Техническая поддержка проекта, помощь в подборе аналогов, поставка прототипов;
- Система менеджмента качества сертифицирована по Международному стандарту ISO 9001;
- Лицензия ФСБ на осуществление работ с использованием сведений, составляющих государственную тайну;
- Поставка специализированных компонентов (Xilinx, Altera, Analog Devices, Intersil, Interpoint, Microsemi, Aeroflex, Peregrine, Syfer, Eurofarad, Texas Instrument, Miteq, Cobham, E2V, MA-COM, Hittite, Mini-Circuits, General Dynamics и др.);

Помимо этого, одним из направлений компании «ЭлектроПласт» является направление «Источники питания». Мы предлагаем Вам помощь Конструкторского отдела:

- Подбор оптимального решения, техническое обоснование при выборе компонента;
- Подбор аналогов;
- Консультации по применению компонента;
- Поставка образцов и прототипов;
- Техническая поддержка проекта;
- Защита от снятия компонента с производства.



Как с нами связаться

Телефон: 8 (812) 309 58 32 (многоканальный)

Факс: 8 (812) 320-02-42

Электронная почта: org@eplast1.ru

Адрес: 198099, г. Санкт-Петербург, ул. Калинина, дом 2, корпус 4, литера А.