

# Model 96 - 3186 series

## Definite Purpose Contactor 3-pole, 75-90 FLA AC Coil

**UL** File E75492  
**CE** File EN60947-4-1:1991  
IEC 947-4-1

Users should thoroughly review the technical data before selecting a product part number. It is recommended that users also seek out the pertinent approvals files of the agencies/laboratories and review them to ensure the product meets the requirements for a given application.

### Features

- 3-pole contactors.
- Convenient "universal" mounting plate.
- Optional interlock/auxiliary switches available.

### Contact Data @ 25°C

**Arrangements:** 3 Form X (3PST-NO-DM).  
**Maximum Ratings:** See Contact Ratings Table.  
**Material:** Silver Cadmium Oxide.

### Coil Data @ 25°C

**Voltage:** 24 - 480 VAC, 50/60 Hz. See Coil Data Table below.  
**Insulation Class:** UL Class B (130°C).  
**Duty Cycle:** Continuous.

### Environmental Data

**Temperature Range:** Storage and Operating: -40°C – +65°C.  
**Flammability:** UL 94-HB housing.

### Mechanical Data

#### Contact Termination:

**Type:** Box Lug with dual 0.250" (6.35 mm) quick connects.

**Wire Size:** 14-1/0 Cu/Al AWG

**Tightening Torque:** 50 in.-lbs.

**Coil Termination:** 0.250" quick connect and a #6-32 screw.

**Arc Cover:** Standard.

**Weight:** 64 oz. (1820 g) approximately

### Contact Ratings

| Full Load Amps | Number of Poles | Line Voltage | Locked Rotor Amps | Resistive Amps | Tungsten/Ballast Amps | Maximum Horsepower |              |             |
|----------------|-----------------|--------------|-------------------|----------------|-----------------------|--------------------|--------------|-------------|
|                |                 |              |                   |                |                       | Voltage            | Single Phase | Three Phase |
| 75             | 3               | 240          | 450               | 93             | -                     | 110/120            | 5            | -           |
|                |                 | 480          | 375               | 93             | 63                    | 200/208            | 10           | 20          |
|                |                 | 600          | 300               | 93             | -                     | 240/277            | 15           | 25          |
|                |                 |              |                   |                |                       | 480                | -            | 40          |
|                |                 | 600          |                   |                |                       | 600                | -            | 25          |
| 90             | 3               | 240          | 540               | 120            | -                     | 110/120            | 7.5          | -           |
|                |                 | 480          | 450               | 120            | 63                    | 200/208            | 15           | 25          |
|                |                 | 600          | 360               | 120            | -                     | 240/277            | 20           | 30          |
|                |                 |              |                   |                |                       | 480                | -            | 50          |
|                |                 | 600          |                   |                |                       | 600                | -            | 50          |

### Coil Data

|                              | 24    | 120     | 208/240  | 277    | 480       |
|------------------------------|-------|---------|----------|--------|-----------|
| Nominal Coil Voltage         | 24    | 120     | 208/240  | 277    | 480       |
| Maximum Pickup Volts         | 18    | 88      | 177      | 220    | 384       |
| Drop-Out Volts Range         | 6 -15 | 20 - 70 | 40 - 110 | 65-185 | 150 - 270 |
| Nominal Inrush VA @ 50 Hz    | 285   | 285     | 285      | 285    | 285       |
| Nominal Inrush VA @ 60 Hz    | 240   | 240     | 240      | 240    | 240       |
| Nominal Sealed VA @ 50 Hz    | 42    | 42      | 42       | 42     | 42        |
| Nominal Sealed VA @ 60 Hz    | 27    | 27      | 27       | 27     | 27        |
| Nominal DC Resistance - Ohms | .63   | 15.6    | 63.5     | 84     | 255       |

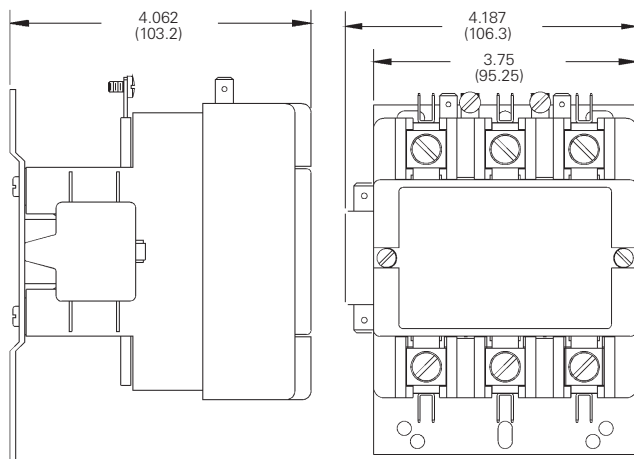
**Ordering Information**

|  |             |   |           |          |           |            |  |
|--|-------------|---|-----------|----------|-----------|------------|--|
| <b>Typical Part No. ▶</b>  | <b>3186</b> | - | <b>30</b> | <b>I</b> | <b>90</b> | <b>999</b> |  |
| <b>1. Series:</b><br>3186 = 3-pole, 75-90 FLA contactor  |             |   |           |          |           |            |  |
| <b>2. Packaging:</b><br>Y = Individual Pack<br>- = Bulk Pack<br>A-ZZZ = Customer specific information (assigned by factory)                                |             |   |           |          |           |            |  |
| <b>3. Pole Configuration:</b><br>30 = 3 Form X (3PST-NO-DM)  |             |   |           |          |           |            |  |
| <b>4. Coil Voltage (50/60 Hz.):</b><br>I = 24VAC, molded      K = 208/240VAC, molded      W = 480VAC, molded<br>J = 120VAC, molded      M = 277VAC, molded |             |   |           |          |           |            |  |
| <b>5. Contact Ratings (Inductive):</b><br>75 = 75 FLA      90 = 90 FLA   |             |   |           |          |           |            |  |
| <b>6. Customer ID Suffix:</b><br>999 = Standard Model      000-998 = Factory assigned customer ID  |             |   |           |          |           |            |  |
| <b>7. Option Code:</b><br>Leave Blank = No customer-specific options      A - ZZ = Factory assigned customer-specific options.                             |             |   |           |          |           |            |  |

**Standard part numbers listed below are more likely to be available from stock.**

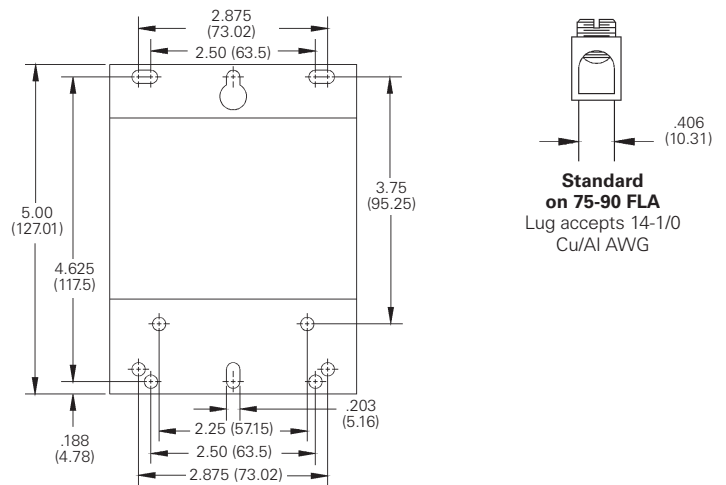
None at present.

**Outline Dimensions**



Shown with Optional Auxiliary Switch

**Termination**



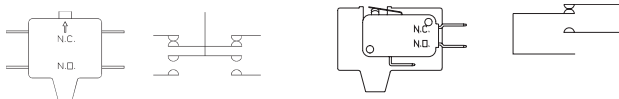
**Standard on 75-90 FLA**  
Lug accepts 14-1/0 Cu/Al AWG

Various interlock / auxiliary switches are available for the Model 96 contactor.



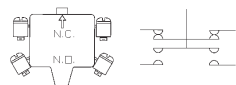
**NORMALLY OPEN -303 STYLE**

**NORMALLY CLOSED -331 STYLE**



**NORMALLY OPEN & CLOSED -332 STYLE**

**SPDT -337 & -341 STYLE**



**W/ #6-32 SCREW & SADDLE CLAMP -344 STYLE**

**Equipped with 0.250" (6.35) Quick Connect Terminals**

| Description   | Factory Modifications |    | Field Added Kits   |                         |
|---|-----------------------|----|--------------------|-------------------------|
|   | Contact Config. NO    | NC | Kit Catalog Number | Number of Kits Required |
| Single unit interlock configurations listed. Maximum of two. Must be same polarity. See footnote (1) for ratings. | 1                     | 0  | 34300-303          | 1                       |
|   | 0                     | 1  | 34300-331          | 1                       |
|   | 1                     | 1  | 34300-332          | 1                       |
|   | 2                     | 0  | 34300-303          | 2                       |
|   | 0                     | 2  | 34300-331          | 2                       |
| SPDT Circuit See footnote (2) for ratings.  | 1                     | 1  | 34300-337          | 1                       |
|   | 2                     | 2  | 34300-337          | 2                       |
| SPDT Dry Circuit, 0.1 amp max.  | 1                     | 1  | 34300-341          | 1                       |
| Gold Flashed Contacts   | 2                     | 2  | 34300-340          | 1                       |

**Equipped with #6-32 Screw Terminals & Saddle Clamps**

| Description  | Factory Modifications |    | Field Added Kits   |                         |
|--|-----------------------|----|--------------------|-------------------------|
|  | Contact Config. NO    | NC | Kit Catalog Number | Number of Kits Required |
| Single unit interlock configurations listed. Maximum of two. Must be same polarity. (note 1) | 1                     | 0  | 34300-342          | 1                       |
|  | 0                     | 1  | 34300-343          | 1                       |
|  | 1                     | 1  | 34300-344          | 1                       |

**Footnotes: Ratings of Auxiliary Interlocks / Switches**

|   |                                |
|---|--------------------------------|
| (1) Contact Rating Single Circuit NO or NC and two circuit NO/NC: | (2) Contact Rating SPDT (337): |
| 120V    240V    480V    600V                                      | 10A, 1/3 HP, 125 or 250 VAC    |
| Break    3.0A    1.5A    0.75A    0.6A                            | 1/2A, 125 VDC; 1/4A, 250 VDC:  |
| Make      30A    15A    7.5A    6A                                | 4A 120 VAC on Lamp Load        |
| Continuous    10A    10A    10A    10A                            |                                |



Компания «ЭлектроПласт» предлагает заключение долгосрочных отношений при поставках импортных электронных компонентов на взаимовыгодных условиях!

Наши преимущества:

- Оперативные поставки широкого спектра электронных компонентов отечественного и импортного производства напрямую от производителей и с крупнейших мировых складов;
- Поставка более 17-ти миллионов наименований электронных компонентов;
- Поставка сложных, дефицитных, либо снятых с производства позиций;
- Оперативные сроки поставки под заказ (от 5 рабочих дней);
- Экспресс доставка в любую точку России;
- Техническая поддержка проекта, помощь в подборе аналогов, поставка прототипов;
- Система менеджмента качества сертифицирована по Международному стандарту ISO 9001;
- Лицензия ФСБ на осуществление работ с использованием сведений, составляющих государственную тайну;
- Поставка специализированных компонентов (Xilinx, Altera, Analog Devices, Intersil, Interpoint, Microsemi, Aeroflex, Peregrine, Syfer, Eurofarad, Texas Instrument, Miteq, Cobham, E2V, MA-COM, Hittite, Mini-Circuits, General Dynamics и др.);

Помимо этого, одним из направлений компании «ЭлектроПласт» является направление «Источники питания». Мы предлагаем Вам помощь Конструкторского отдела:

- Подбор оптимального решения, техническое обоснование при выборе компонента;
- Подбор аналогов;
- Консультации по применению компонента;
- Поставка образцов и прототипов;
- Техническая поддержка проекта;
- Защита от снятия компонента с производства.



#### Как с нами связаться

**Телефон:** 8 (812) 309 58 32 (многоканальный)

**Факс:** 8 (812) 320-02-42

**Электронная почта:** [org@eplast1.ru](mailto:org@eplast1.ru)

**Адрес:** 198099, г. Санкт-Петербург, ул. Калинина, дом 2, корпус 4, литера А.