



Model 96 - 3186 series

Definite Purpose Contactor 3-pole, 75-90 FLA AC Coil

UL File E75492
CE File EN60947-4-1:1991
IEC 947-4-1

Users should thoroughly review the technical data before selecting a product part number. It is recommended that users also seek out the pertinent approvals files of the agencies/laboratories and review them to ensure the product meets the requirements for a given application.

Features

- 3-pole contactors.
- Convenient "universal" mounting plate.
- Optional interlock/auxiliary switches available.

Contact Data @ 25°C

Arrangements: 3 Form X (3PST-NO-DM).
Maximum Ratings: See Contact Ratings Table.
Material: Silver Cadmium Oxide.

Coil Data @ 25°C

Voltage: 24 - 480 VAC, 50/60 Hz. See Coil Data Table below.
Insulation Class: UL Class B (130°C).
Duty Cycle: Continuous.

Environmental Data

Temperature Range: Storage and Operating: -40°C – +65°C.
Flammability: UL 94-HB housing.

Mechanical Data

Contact Termination:

Type: Box Lug with dual 0.250" (6.35 mm) quick connects.

Wire Size: 14-1/0 Cu/Al AWG

Tightening Torque: 50 in.-lbs.

Coil Termination: 0.250" quick connect and a #6-32 screw.

Arc Cover: Standard.

Weight: 64 oz. (1820 g) approximately

Contact Ratings

| Full Load Amps | Number of Poles | Line Voltage | Locked Rotor Amps | Resistive Amps | Tungsten/Ballast Amps | Maximum Horsepower | | |
|----------------|-----------------|--------------|-------------------|----------------|-----------------------|--------------------|--------------|-------------|
| | | | | | | Voltage | Single Phase | Three Phase |
| 75 | 3 | 240 | 450 | 93 | - | 110/120 | 5 | - |
| | | 480 | 375 | 93 | 63 | 200/208 | 10 | 20 |
| | | 600 | 300 | 93 | - | 240/277 | 15 | 25 |
| | | | | | | 480 | - | 40 |
| | | 600 | | | | 600 | - | 25 |
| 90 | 3 | 240 | 540 | 120 | - | 110/120 | 7.5 | - |
| | | 480 | 450 | 120 | 63 | 200/208 | 15 | 25 |
| | | 600 | 360 | 120 | - | 240/277 | 20 | 30 |
| | | | | | | 480 | - | 50 |
| | | 600 | | | | 600 | - | 50 |

Coil Data

| | 24 | 120 | 208/240 | 277 | 480 |
|------------------------------|-------|---------|----------|--------|-----------|
| Nominal Coil Voltage | 24 | 120 | 208/240 | 277 | 480 |
| Maximum Pickup Volts | 18 | 88 | 177 | 220 | 384 |
| Drop-Out Volts Range | 6 -15 | 20 - 70 | 40 - 110 | 65-185 | 150 - 270 |
| Nominal Inrush VA @ 50 Hz | 285 | 285 | 285 | 285 | 285 |
| Nominal Inrush VA @ 60 Hz | 240 | 240 | 240 | 240 | 240 |
| Nominal Sealed VA @ 50 Hz | 42 | 42 | 42 | 42 | 42 |
| Nominal Sealed VA @ 60 Hz | 27 | 27 | 27 | 27 | 27 |
| Nominal DC Resistance - Ohms | .63 | 15.6 | 63.5 | 84 | 255 |

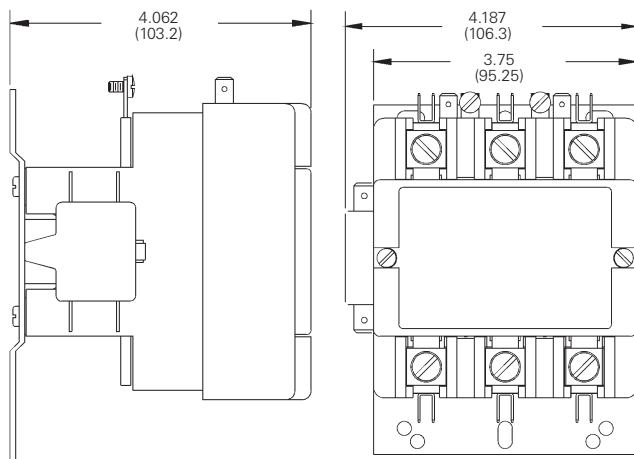
Ordering Information

| | | | | | | | |
|--|-------------|---|-----------|----------|-----------|------------|--|
| Typical Part No. ▶ | 3186 | - | 30 | I | 90 | 999 | |
| 1. Series: 3186 = 3-pole, 75-90 FLA contactor | | | | | | | |
| 2. Packaging: Y = Individual Pack - = Bulk Pack A-ZZZ = Customer specific information (assigned by factory) | | | | | | | |
| 3. Pole Configuration: 30 = 3 Form X (3PST-NO-DM) | | | | | | | |
| 4. Coil Voltage (50/60 Hz.): I = 24VAC, molded K = 208/240VAC, molded W = 480VAC, molded J = 120VAC, molded M = 277VAC, molded | | | | | | | |
| 5. Contact Ratings (Inductive): 75 = 75 FLA 90 = 90 FLA | | | | | | | |
| 6. Customer ID Suffix: 999 = Standard Model 000-998 = Factory assigned customer ID | | | | | | | |
| 7. Option Code: Leave Blank = No customer-specific options A - ZZ = Factory assigned customer-specific options. | | | | | | | |

Standard part numbers listed below are more likely to be available from stock.

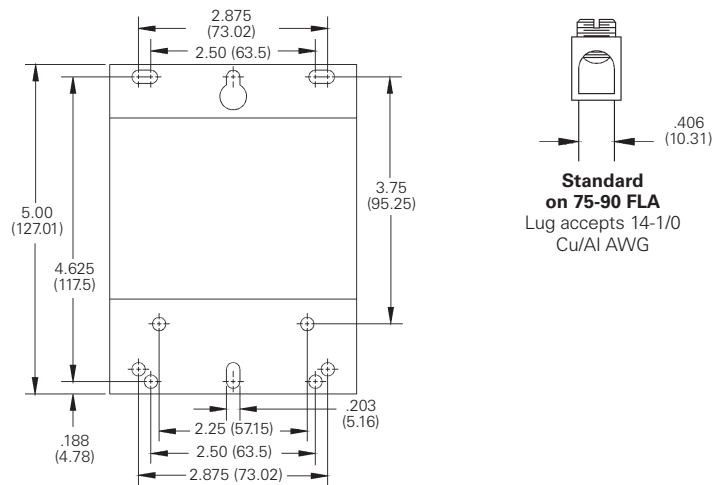
None at present.

Outline Dimensions



Shown with Optional Auxiliary Switch

Termination



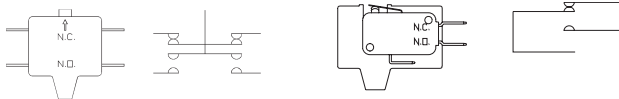
Standard on 75-90 FLA
Lug accepts 14-1/0 Cu/Al AWG

Various interlock / auxiliary switches are available for the Model 96 contactor.



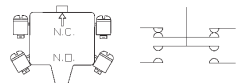
NORMALLY OPEN -303 STYLE

NORMALLY CLOSED -331 STYLE



NORMALLY OPEN & CLOSED -332 STYLE

SPDT -337 & -341 STYLE



W/ #6-32 SCREW & SADDLE CLAMP -344 STYLE

Equipped with 0.250" (6.35) Quick Connect Terminals

| Description | Factory Modifications | | Field Added Kits | |
|---|-----------------------|--------------------|--------------------|-------------------------|
| | Contact Config. NO | Contact Config. NC | Kit Catalog Number | Number of Kits Required |
| Single unit interlock configurations listed. Maximum of two. Must be same polarity. See footnote (1) for ratings. | 1 | 0 | 34300-303 | 1 |
| | 0 | 1 | 34300-331 | 1 |
| | 1 | 1 | 34300-332 | 1 |
| | 2 | 0 | 34300-303 | 2 |
| | 0 | 2 | 34300-331 | 2 |
| SPDT Circuit See footnote (2) for ratings. | 1 | 1 | 34300-337 | 1 |
| | 2 | 2 | 34300-337 | 2 |
| SPDT Dry Circuit, 0.1 amp max. | 1 | 1 | 34300-341 | 1 |
| Gold Flashed Contacts | 2 | 2 | 34300-340 | 1 |

Equipped with #6-32 Screw Terminals & Saddle Clamps

| Description | Factory Modifications | | Field Added Kits | |
|--|-----------------------|--------------------|--------------------|-------------------------|
| | Contact Config. NO | Contact Config. NC | Kit Catalog Number | Number of Kits Required |
| Single unit interlock configurations listed. Maximum of two. Must be same polarity. (note 1) | 1 | 0 | 34300-342 | 1 |
| | 0 | 1 | 34300-343 | 1 |
| | 1 | 1 | 34300-344 | 1 |

Footnotes: Ratings of Auxiliary Interlocks / Switches

| | |
|---|--------------------------------|
| (1) Contact Rating Single Circuit NO or NC and two circuit NO/NC: | (2) Contact Rating SPDT (337): |
| 120V 240V 480V 600V | 10A, 1/3 HP, 125 or 250 VAC |
| Break 3.0A 1.5A 0.75A 0.6A | 1/2A, 125 VDC; 1/4A, 250 VDC: |
| Make 30A 15A 7.5A 6A | 4A 120 VAC on Lamp Load |
| Continuous 10A 10A 10A 10A | |



Компания «ЭлектроПласт» предлагает заключение долгосрочных отношений при поставках импортных электронных компонентов на взаимовыгодных условиях!

Наши преимущества:

- Оперативные поставки широкого спектра электронных компонентов отечественного и импортного производства напрямую от производителей и с крупнейших мировых складов;
- Поставка более 17-ти миллионов наименований электронных компонентов;
- Поставка сложных, дефицитных, либо снятых с производства позиций;
- Оперативные сроки поставки под заказ (от 5 рабочих дней);
- Экспресс доставка в любую точку России;
- Техническая поддержка проекта, помощь в подборе аналогов, поставка прототипов;
- Система менеджмента качества сертифицирована по Международному стандарту ISO 9001;
- Лицензия ФСБ на осуществление работ с использованием сведений, составляющих государственную тайну;
- Поставка специализированных компонентов (Xilinx, Altera, Analog Devices, Intersil, Interpoint, Microsemi, Aeroflex, Peregrine, Syfer, Eurofarad, Texas Instrument, Miteq, Cobham, E2V, MA-COM, Hittite, Mini-Circuits, General Dynamics и др.);

Помимо этого, одним из направлений компании «ЭлектроПласт» является направление «Источники питания». Мы предлагаем Вам помощь Конструкторского отдела:

- Подбор оптимального решения, техническое обоснование при выборе компонента;
- Подбор аналогов;
- Консультации по применению компонента;
- Поставка образцов и прототипов;
- Техническая поддержка проекта;
- Защита от снятия компонента с производства.



Как с нами связаться

Телефон: 8 (812) 309 58 32 (многоканальный)

Факс: 8 (812) 320-02-42

Электронная почта: org@eplast1.ru

Адрес: 198099, г. Санкт-Петербург, ул. Калинина, дом 2, корпус 4, литера А.